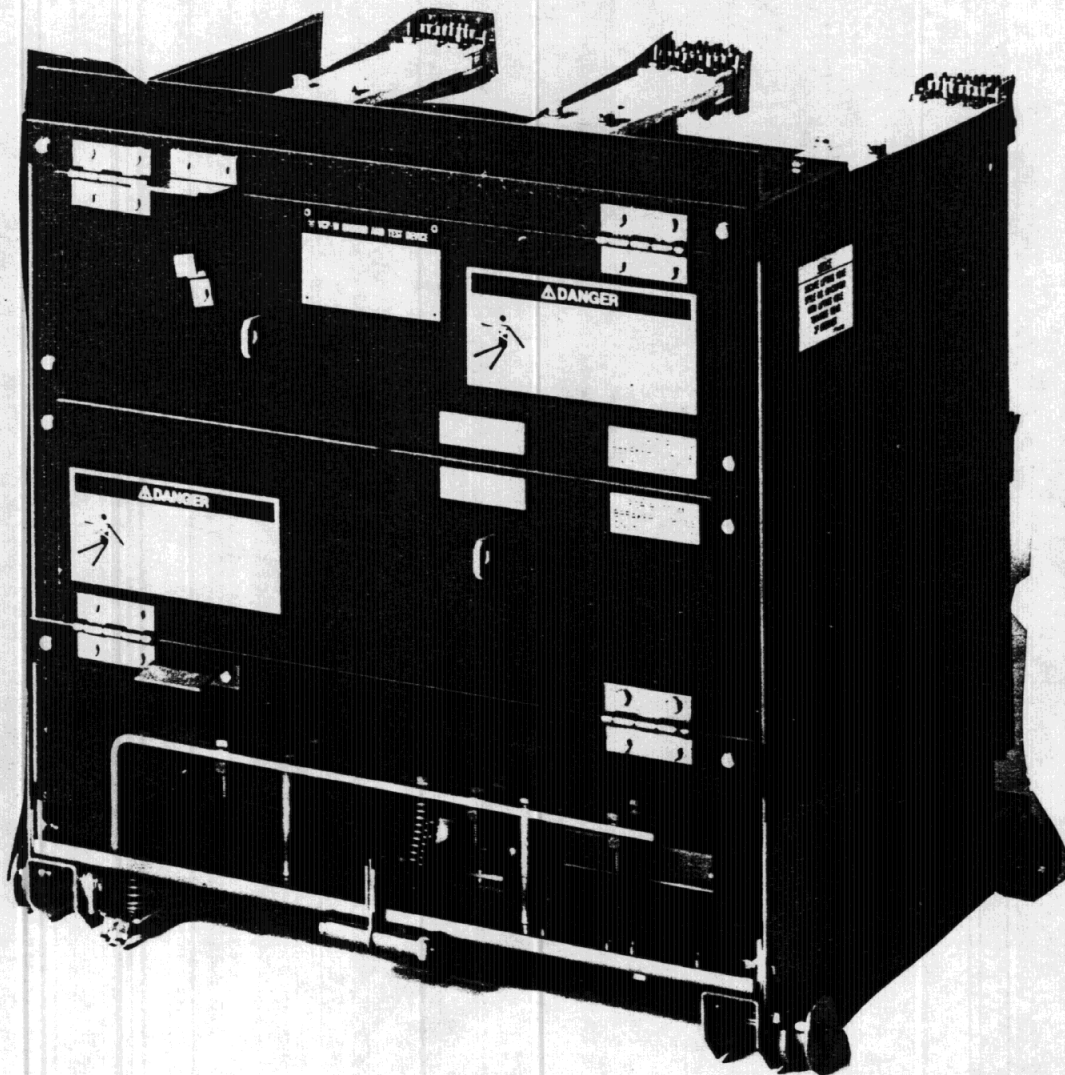


TYPE VCP-W
MANUAL
GROUNDING & TEST DEVICE



3778A74H01

FILE 32-255

INTRODUCTION

Type Vac Clad-W switchgear assemblies are designed with all the bus work completely insulated for safety. Since the current carrying parts are not readily accessible, type VCP-W Manually Operated Grounding and Test Device is designed for insertion into the breaker compartment to gain access to the primary stationary contacts. It provides a convenient means to:

1. Ground a circuit for maintenance work
2. Apply potential for cable testing
3. Access both bus and line circuits for "phasing out" tests

Caution:

Because of the unique application and vast variety of system/user requirements, specific safe operating procedures for the use of this device must be developed by the user.

DESCRIPTION

The device consists of a drawout element that can be inserted into a circuit breaker compartment in the same manner as a type VCP-W circuit breaker. It includes six terminals and ground bus connections. Each terminal is isolated from each other and the ground bus connection by insulating barriers. The upper and lower terminals are accessible upon opening the respective front hinged door. The ground connection is located in the lower front section of the device.

Vac Clad-W switchgear is a two-high arrangement. In the lower compartment the top studs normally connect to the main bus and the bottom studs normally connect to the incoming line or feeders. In an upper compartment, the opposite normally holds true, i.e., the top studs connect to the incoming line or feeders and the bottom studs connect to the main bus. This must be verified for each application. Because of this two-high arrangement, the bus and the line positions of the grounding and test device terminals will vary depending upon whether the device is used in an upper or lower compartment. Therefore, it is most important that the bus or line terminals be correctly identified for each compartment before using this device.

Code plates are provided to prevent insertion of 1200/2000 amp device into 3000 amp compartment and vice-versa.

Type VCP-W manual grounding and test devices are also available with either the upper or the lower terminals only. Devices of the same rating with only the upper terminals or with only the lower terminals are coded to make them non-interchangeable by the addition of an overlay code plate 8243A53H01 in the breaker compartments.

OPERATION

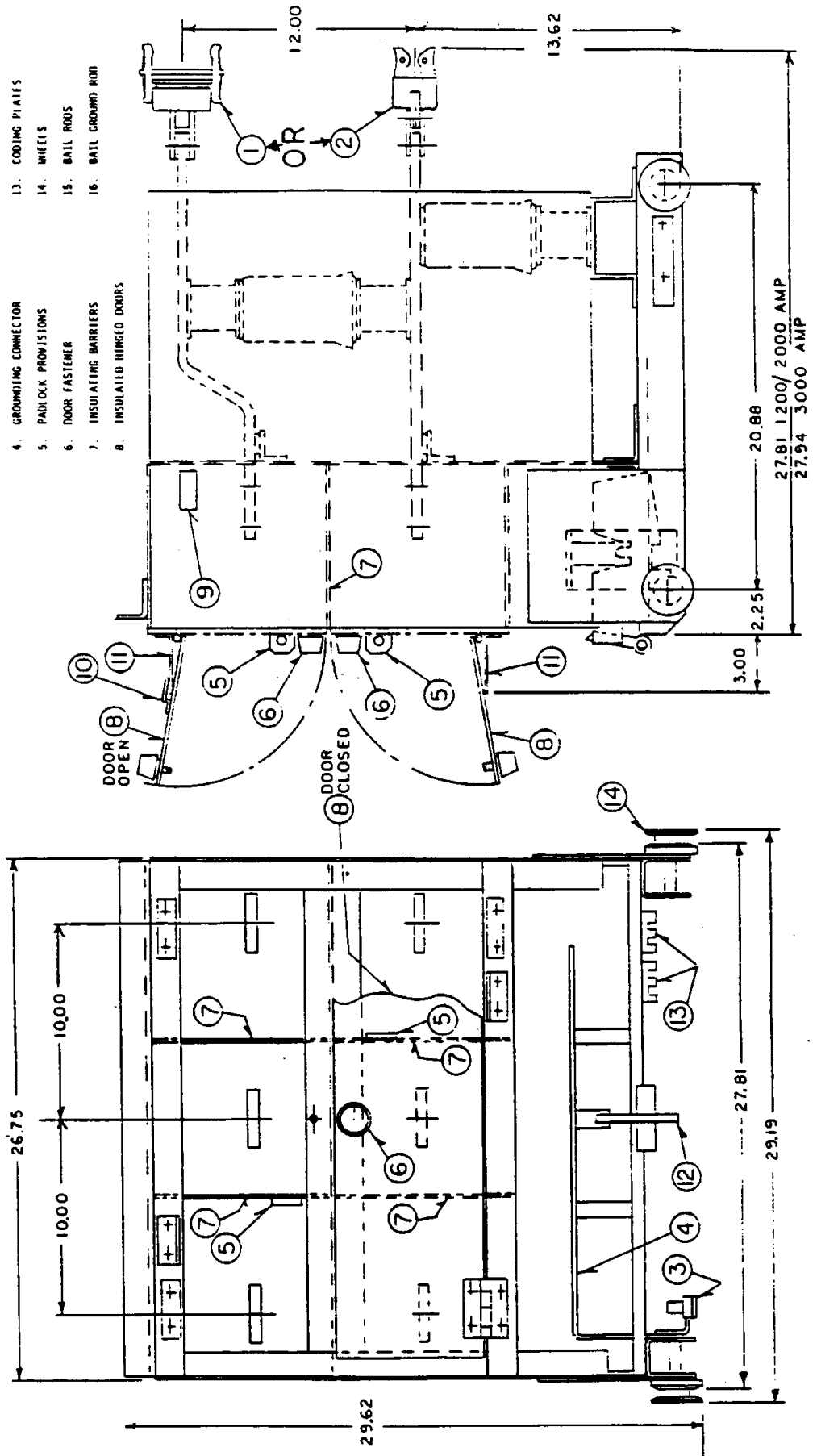
SAFE PRACTICES:

- o Permit only authorized trained personnel to use this device.
- o Take extreme care while using this device to avoid contacting "Live" or "Hot" (energized) terminals.
- o Develop specific and safe operating procedures for conducting any tests with this device.
- o CORRECTLY IDENTIFY LINE AND BUS TERMINALS FOR THE BREAKER COMPARTMENT BEFORE USING THIS DEVICE.
- o Check for correct code plate(s) on the device. Do not attempt to force the device into the compartment.

The grounding of either upper or lower terminals is accomplished by connecting cables (provided with the device) from either the upper or the lower terminals to the device ground connection. Cable testing or "phasing out" testing may be accomplished by connecting suitable test equipment, as required to the terminals.

STANDARD

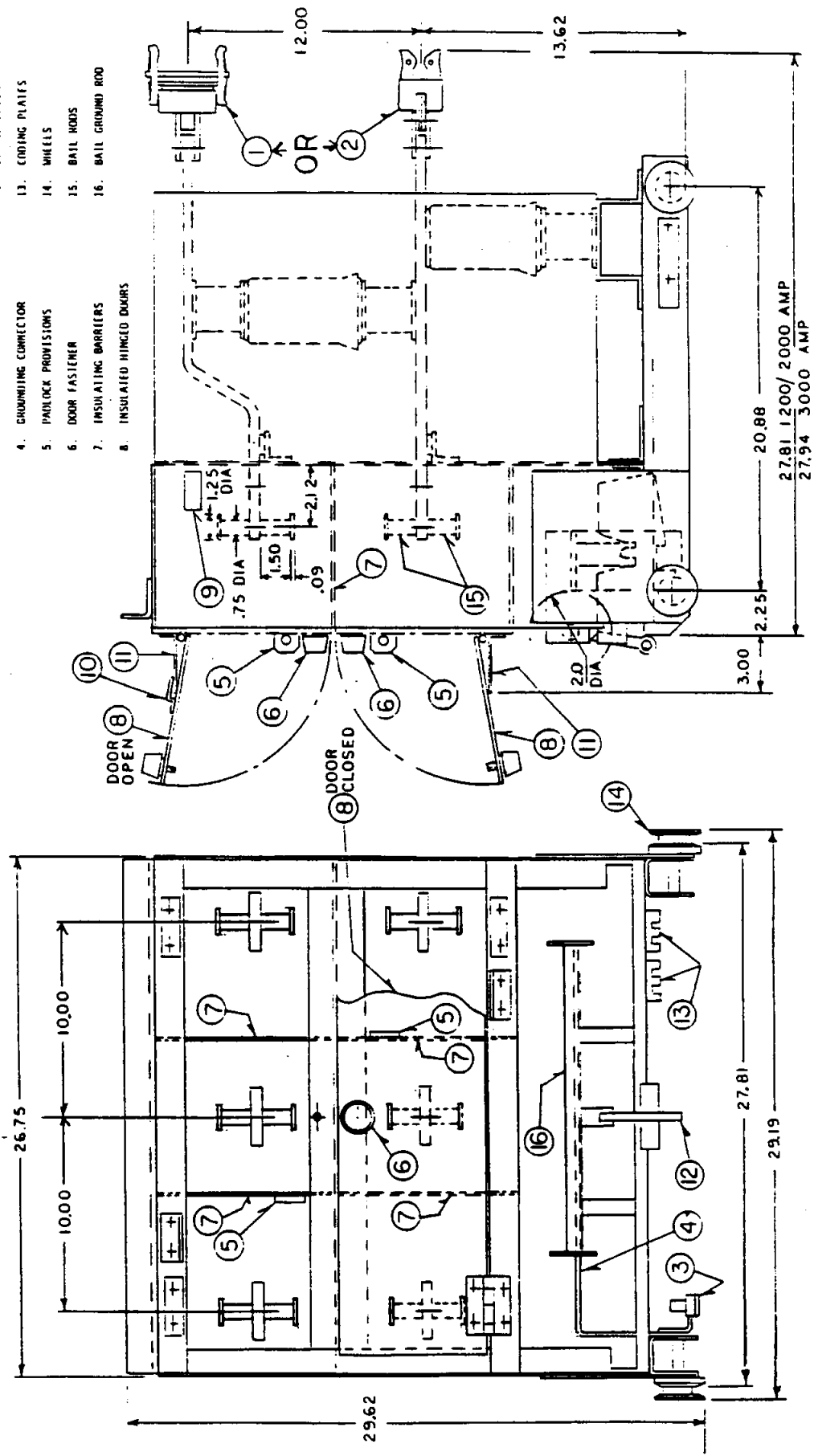
- 1. 2000 AMP MAIN DISCONNECTS
- 2. 1200/2000 AMP MAIN DISCONNECTS
- 3. GROUNDING CONTACT
- 4. GROUNDING CONNECTOR
- 5. PADLOCK PROVISIONS
- 6. DOOR FASTENER
- 7. INSULATING BARRIERS
- 8. INSULATED HINGED DOORS
- 9. LIFTING RIBS
- 10. DRAW LATCH
- 11. DRAW STOP
- 12. LEV-IN LATCH
- 13. COUPLING PLATES
- 14. WHEELS
- 15. BAIL ROUS
- 16. BAIL GROUND RIB



DEVICE AVAILABLE WITH TOP STUDS OR BOTTOM STUDS OR TOP AND BOTTOM STUDS

WITH BAILS

- 1. 3000 AMP MAIN DISCONNECTS
- 2. 1200/2000 AMP MAIN DISCONNECTS
- 3. GROUNDING CONTACT
- 4. GROUNDING CONNECTOR
- 5. PADLOCK PROVISIONS
- 6. DOOR FASTENER
- 7. INSULATING BARRIERS
- 8. INSULATED HINGED DOORS
- 9. LEV-IN LATCH
- 10. DRUM LATCH
- 11. DOOR STOP
- 12. LEV-IN LATCH
- 13. CRDING PLATES
- 14. WHEELS
- 15. BAIL HOUS
- 16. BAIL GROUND ROD



DEVICE AVAILABLE WITH:
TOP STUDS OR BOTTOM STUDS
OR TOP AND BOTTOM STUDS