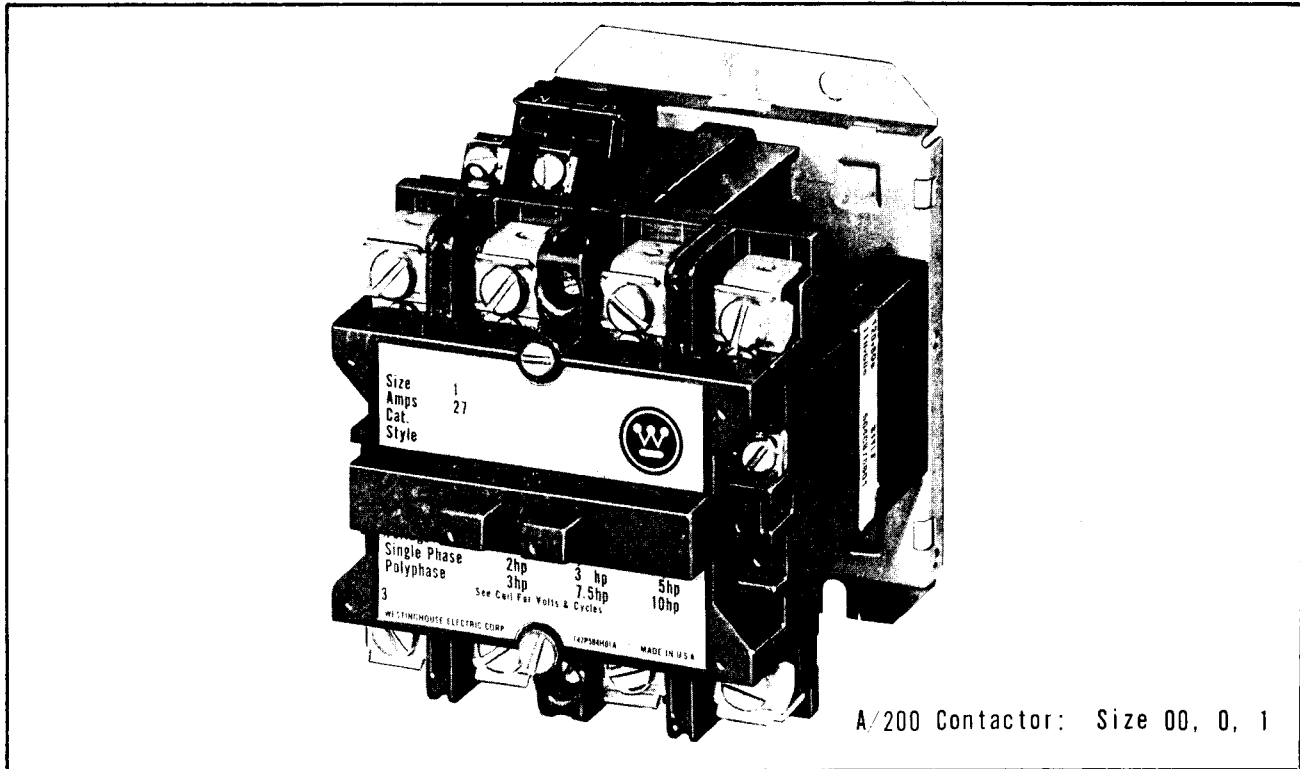


# Instructions for A/200 Contactor, NEMA Size 00, 0, 1



I.L. 13144C  
File 8200



A/200 Contactor: Size 00, 0, 1

The Westinghouse A/200 Size 00, 0, 1 Contactor has been designed to be applicable as the control for motor load circuits, resistance loads, interconnections of multi-speed motor windings, utilizing main pole combinations of 2, 3, 4 and 5 poles.

supplied with a dual voltage coil, is normally wired for the high voltage (HV) connection.

## Contactor Identification

The A/200 Contactor complete is identified for ordering by Cat. No.

The coil style number, voltage, and frequency rating is marked on the side of the coil.

## Coil

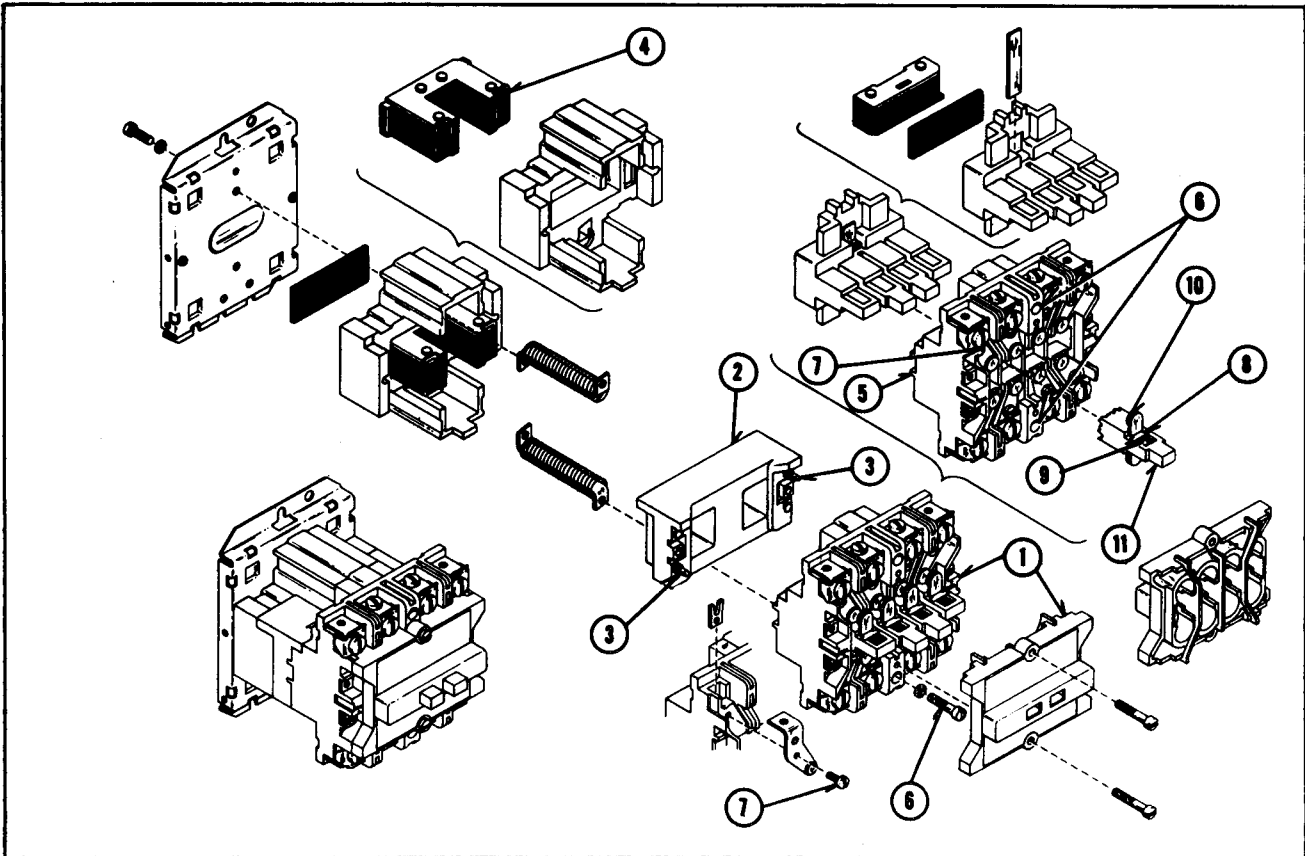
The A/200 Contactor is available with single or dual voltage coil. The contactor, when

Voltage	Coil Volt-Amp Data - 60 cps.			
	2 & 3 Pole		4 & 5 Pole	
	Open VA	Closed VA	Open VA	Closed VA
110	160	25	200	30
220	160	25	200	30
440/600	160	25	200	30

## Maintenance

Magnet and armature mating surfaces are self-aligning; no maintenance is necessary.

To remove contactor coil - loosen the two screws (6) recessed between the two center power poles and lift off the top section (1) of the contactor unit.



### Parts Identification

The coil (2) will normally be lifted as a part of this assembly. Pull coil unit loose (disengage coil stabs) (3). If contactor has been installed it will be necessary to remove line leads and tilt the base assembly back over the load leads. A new coil is installed simply by placing it in position on the magnet (4) and replacing the top half of the contactor. Care should be taken to assure proper orientation of coil so key-way (5) will fit the top base section. After new coil has been installed be sure that the two recessed assembly screws (6) are tight.

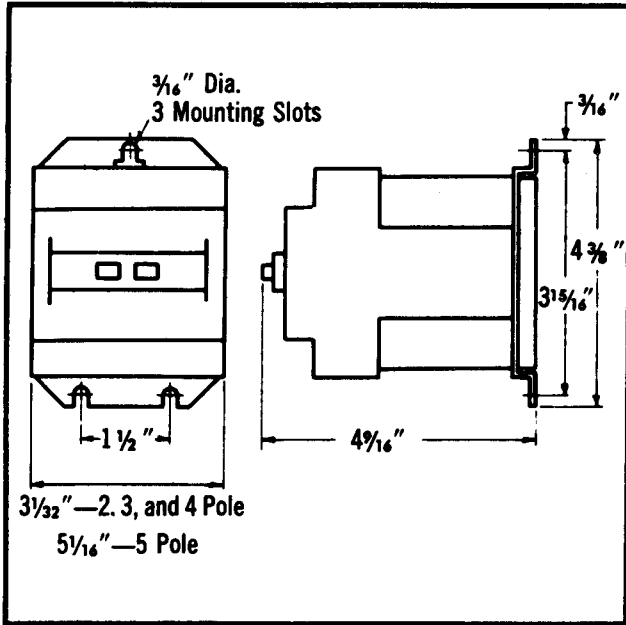
Current Carrying Parts are replaceable. The stationary contact and line or load terminal are parts of one assembly. This assembly may be changed by removing any leads and removing the screw fixing the strap (7) to the molded base. The bridging contact may be changed as follows:

1. Lift the keeper (8) and spring (9) as a group (preferably by using a flat tool such as a screw driver blade).

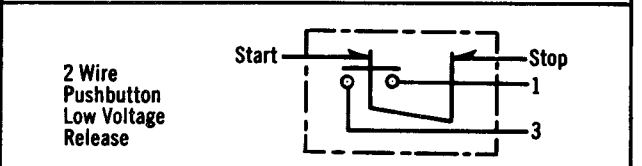
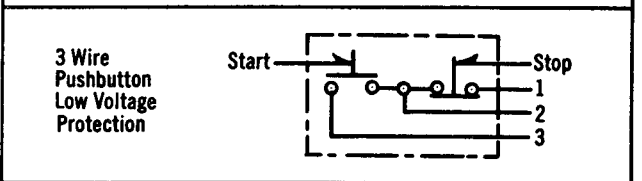
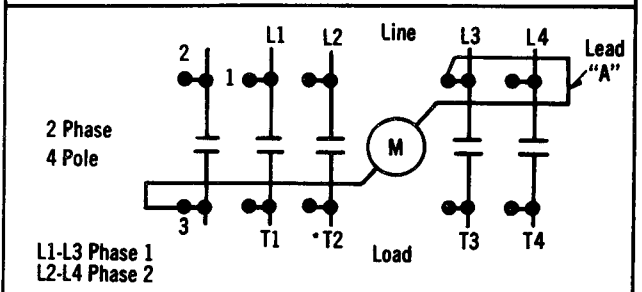
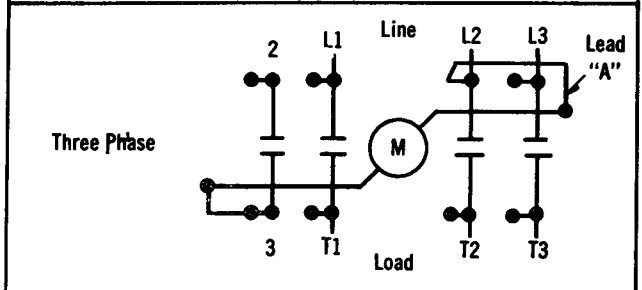
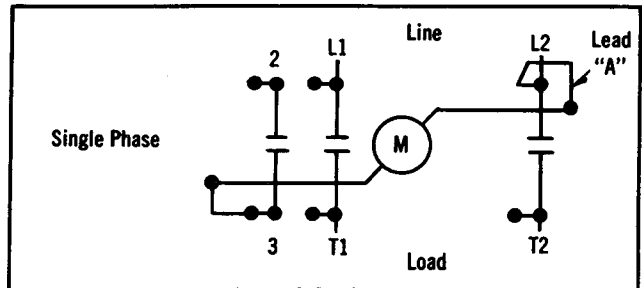
Renewal Part Kits		
Size 00	Two Pole Kit	373B331G17
	Three & Four Pole Kit	373B331G18
Size 0	Single Pole Kit	373B331G01
	Two Pole Kit	373B331G02
	Three & Four Pole Kit	373B331G04
	Five Pole Kit	373B331G05
Size 1	Single Pole Kit	373B331G06
	Two Pole Kit	373B331G07
	Three & Four Pole Kit	373B331G09
	Five Pole Kit	373B331G10
Kit includes moving and stationary contacts, contact springs.		
L-56 Electrical Interlock One Universal Interlock (NO and NC poles) S#503C782G01.		
Coil Order by style number, voltage and frequency.		

2. Rotate the bridging contact (10) approximately 45°.

3. Withdraw the bridge (10) from the cross-bar (11). New bridging contacts may be added by a similar process. CAUTION. All contacts must be changed as a group to avoid misalignment of contact.



Dimension Drawings



Note: Order Pushbutton Units Separately

Note: For Separate Control, Remove Lead "A". Connect One Lead Of Separate Control Circuit To Coil Where "A" Was Removed, And The Other Lead To Terminal "1" of P.B. Station. If Contactor Is Wired For Separate Control At Factory, Wire As Per Foregoing Instructions

Wiring Diagrams