



# a-c magnetic brakes floor or motor mounting

dimension  
sheet  
**5240**  
page 5

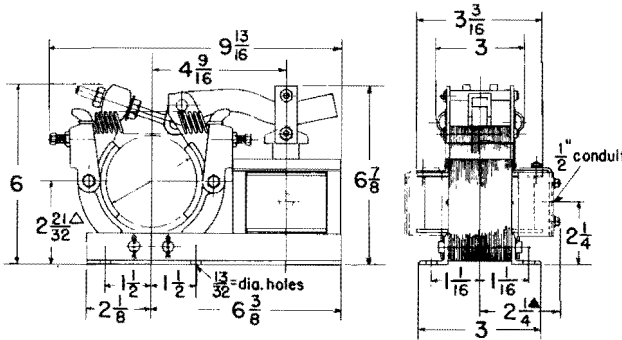
open • drip-proof, splash-proof

**solenoid operated—type AI**

frame 31

dimensions, inches • not to be used for construction purposes unless dimensions are approved

## open type



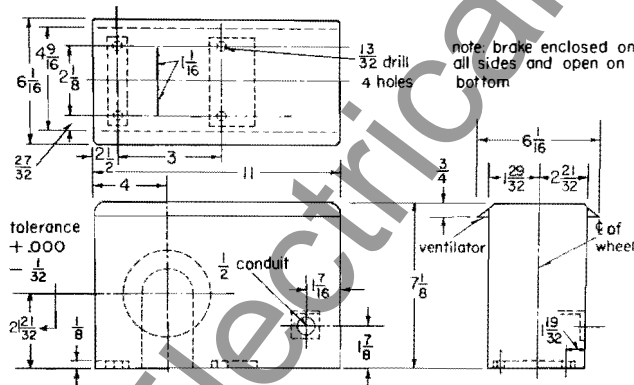
reproduced from dwg. 24-B-931, sub. 8

### brake wheel

frame size	diam inches	face inches	max bore inches	wt lbs
31	3	1 5/8	1	11

▲ May be used on either side.  
△ This dimension will never be exceeded, but may vary to 1/32 less than that shown in drawing.

## drip-proof, splash-proof enclosure



reproduced from drawing 41-D-384, sub 8

**approval**

**purchaser:**

name .....  
order no. ....  
machine no. ....

**for brake:**

frame .....  
torque  
continuous .....  
intermittent .....  
volts ..... freq. ....  
style no. ....

**Westinghouse Electric Corporation:**

date .....  
approved by .....  
g.o. no. ....  
item no. ....

Westinghouse



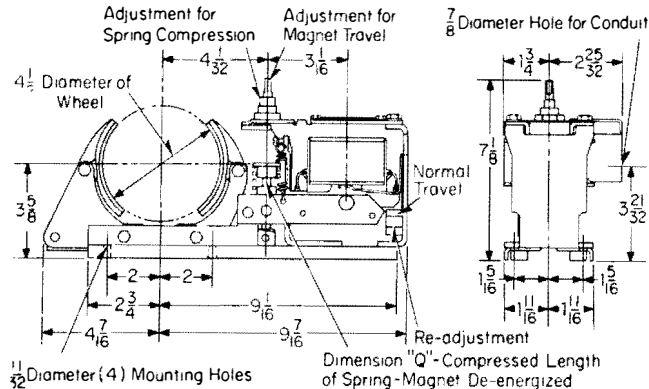
**A-C Magnetic Brakes  
Type AK**

Floor or Motor Mounted  
Open, Drip-proof, Splash-proof

**Magnet Operated – Type AK Frames 41, 43, 73, 103**

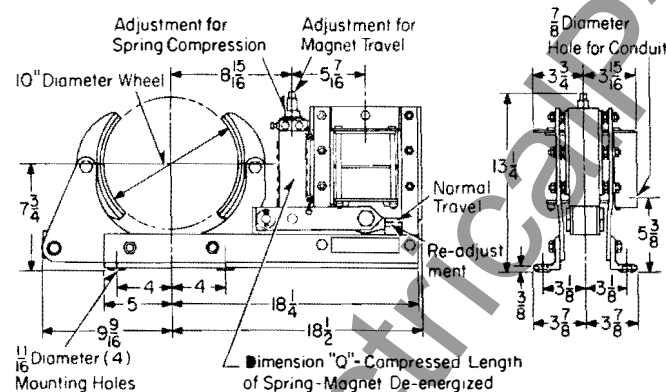
Dimensions, Inches Not to be used for construction purposes unless dimensions are approved

**Open Types**



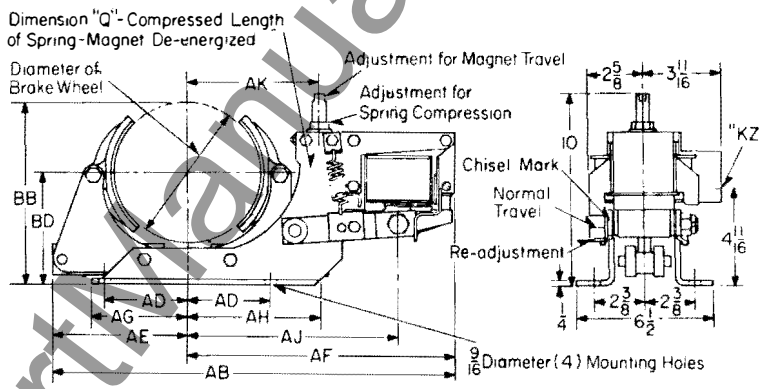
**Frame AK-41**

Reproduced from Dwg. 30-B-2965, sub 2



**Frame AK-103**

Reproduced from Dwg. 32-B-3536, sub 5



**Frames 43 and 73**

Reproduced from Dwg. 29-B-5635, sub 5

Frame No.	Torque Lbs. Ft.	Q
AK-41	10 Cont. 15 Int.	1 1/2 1
AK-43	25 Cont. 35 Int.	2 1/2 2
AK-73	50 Cont. 75 Int.	2 1/2 2
AK-103	125 Cont. 160 Int.	4 4 1/8

Frame No.	Brake Wheel			Dimensions, Inches – Frames 43, 73										Conduit Size KZ
	Dia.	Face	Max. Bore	AB	AD	AE	AF	AG	AH	AJ	AK	BB	BD	
AK-41	4 1/2	1	1 1/8	See illustration above										
AK-43	4 1/2	3 1/8	1 1/8	18	3 3/4	5 1/2	12 1/16	5 1/2	5 1/2	9 11/32	5 1/16	6 1/2	4 1/4	1/2
AK-73	7	3 3/8	2	19 1/2	4	6 1/2	12 1/16	4 1/2	6	10 1/2	6 1/16	8 1/16	5 1/8	1/2
AK-103	10	3 3/8	3	See illustration above										

**Approval**

Purchaser:

Name.....  
Order No.....  
Machine No.....

**For Brake:**

Frame.....  
Torque  
Continuous.....  
Intermittent.....  
Volts..... Freq.....  
Style No.....

**Westinghouse Electric Corporation:**

Date.....  
Approved by.....  
G.O. No.....  
Item No.....





# a-c magnetic brakes floor or motor mounted

dimension  
sheet

5240

page 15

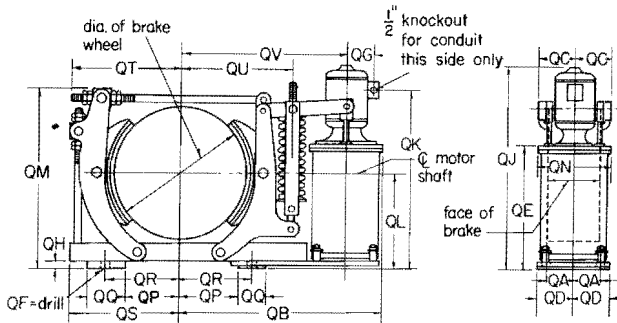
open, drip-proof, splash-proof

hydraulic operated—type HI

frames 83 to 2811

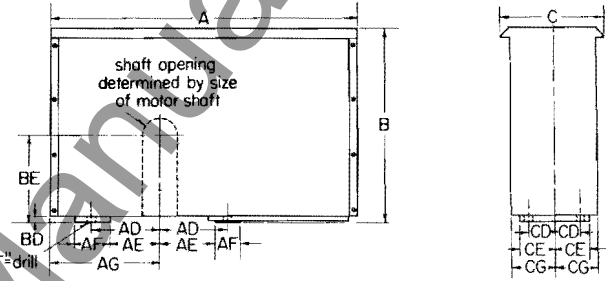
dimensions, inches • not to be used for construction purposes unless dimensions are approved

## open type



reproduced from dwg. 72-B-761, sub. 18

## drip-proof, splash-proof enclosure



reproduced from dwg. 94-B-922, sub. 9

## open

frame no.	dimension in inches brake wheel			width							height							depth				QF	
	diam.	face	max. bore	QS	QB	QP	QR	QQ	QT	QU	QV	QG	QI	QM	QH	QE	QL	QK	QD	QA	QN		QC
83	8	3 1/8	2	7	17	3 1/4	4 3/4	3	7	7 1/2	14	2 1/8	15 1/2	13	1/2	11 1/4	6 1/4	14 3/8	3 1/4	2 1/2	6	3 5/8	1 1/8
105	10	5 1/4	2 1/2	8 3/4	19	3 3/4	5 1/2	3 1/2	7 3/4	9 1/8	15	2 7/8	19 3/16	16 1/8	3/4	13 1/2	9	17 3/16	3 5/8	2 3/4	7 7/8	4 5/8	1 3/16
135	13	5 1/4	3 1/2	10 3/16	23 3/4	5 5/8	7 1/2	4	10 1/2	11	19	3 3/16	26 3/16	18	3/4	17 13/16	9 3/8	22 1/2	4 3/16	3	9 1/2	6 1/4	1 5/16
167	16	7 1/4	4	12 1/4	26 1/2	7	9 1/2	5	12 3/4	12 3/4	21 3/4	3 1/16	26 7/16	22 7/8	3/4	17 13/16	11	22 3/4	4	3	9 1/2	4 11/16	1 5/16
198	19	8 1/4	4 1/2	15 1/2	29 3/8	7 1/2	10 1/2	5 1/2	14 3/8	16 1/8	24	3 23/32	29	25 1/8	1	19 1/16	13 1/2	25	5 3/8	4	10 3/4	5	1 3/16
239	23	9 1/4	5 1/4	18	35 1/8	8	12 3/4	8	14 7/8	19 1/8	29 1/8	4 1/32	29 13/16	31 1/4	1 1/4	20 1/16	16 1/4	25 13/16	6 1/8	4 3/8	12	5 3/4	1 3/8
2811	28	11 1/4	5 1/2	20 5/8	47 3/8	13	16	6	17	24 1/4	40 3/4	4 1/16	39 3/4	37 3/4	1	26 3/16	19 1/4	33 13/16	7	5 1/4	12 1/2	6 1/2	1 1/2

## drip-proof, splash proof

frame no.	dimension in inches brake wheel			width					height			depth				T
	diam.	face	max. bore	A	AD	AE	AF	AG	B	BD	BE	C	CD	CE	CG	
83	8	3 1/8	2	26	4 3/4	3 1/4	3	8 1/4	16 1/2	1/2	6 1/4	11	2 1/2	3 1/4	4 1/8	1 1/16
105	10	5 1/4	2 1/2	30	5 1/2	3 3/4	3 1/2	9 1/2	20 5/8	3/4	9	12 1/2	2 3/4	3 3/8	5 1/8	1 3/16
135	13	5 1/4	3 1/2	36	7 1/2	5 5/8	4 13/16	11 1/4	26 3/4	3/4	9 3/8	16 3/4	3	4 1/4	7 1/4	1 5/16
167	16	7 1/4	4	41 1/4	9 1/2	7	5	13 3/4	27	3/4	11	13	3	4	5 3/8	1 5/16
198	19	8 1/4	4 1/2	46 3/4	10 1/2	7 1/2	5 1/2	16 1/2	30 1/2	1	13 1/2	14 3/4	4	5 3/8	6 1/4	1 3/16
239	23	9 1/4	5 1/4	55 1/4	12 3/4	8	8	19	32	1 1/4	16 1/4	17 1/2	4 3/8	6 1/8	7 1/2	1 3/8

approval

purchaser:

name.....  
order no.....  
machine no.....

for brake:

frame.....  
torque  
continuous.....  
intermittent.....  
volts.....freq.....  
style no.....

Westinghouse Electric Corporation:

date.....  
approved by.....  
g.o. no.....  
item no.....



# d-c magnetic brakes

twin magnet • types TM and TMR

frames 83 to 3014

with rectifier available for a-c operation

dimension sheet

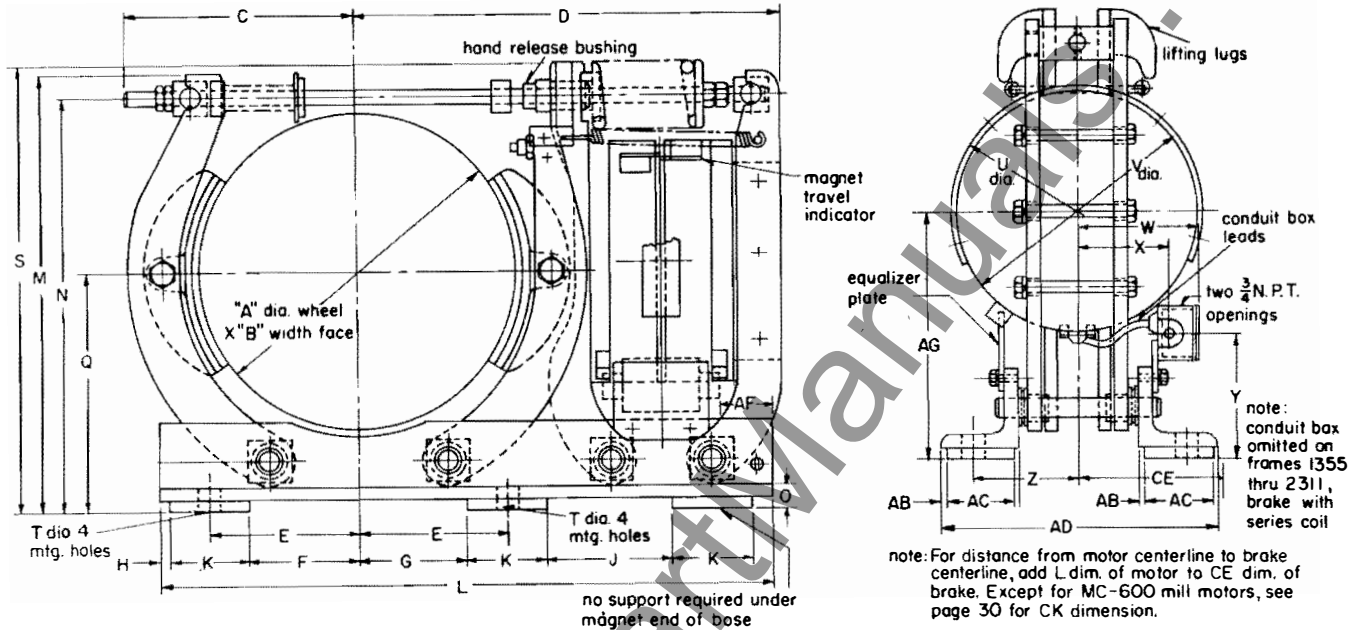
5240

page 29

frames 83 to 2311 shunt • frames 83 and 1035 with series coil

see page 30 for frames 1355 to 3014 with series coil

standard right hand mounting shown • position of conduit box and equalizer plate reversed for left hand mounting



dimensions, inches • not to be used for construction purposes unless dimensions are approved

frame no.	wheel dia A	width of face B	C	D	E	F	G	H	J	K	L	M	N	O	Q
83	8	3 1/4	6 1/2	14 3/4	3 1/4	2 1/2	2 1/2	1/4	7 1/2	1 1/2	18 1/4	13	12 5/8	5/8	7
1035	10	3 3/4	7 5/8	17	4	3	3	1/4	7 3/4	2	22 1/4	15 1/2	14 5/8	1	8 3/8
1355	13	5 3/4	9 7/8	19 7/8	5 3/4	4 1/2	4 1/2	1/2	5 5/8	2 1/2	26 1/4	18 5/8	17 7/8	27/32	9 1/8
1665	16	6 3/4	11 1/2	21 1/2	7 1/2	5 1/2	5 1/2	1/2	6 3/8	4	30 7/8	22 1/4	21	1 1/4	12 1/8
1985	19	8 3/4	14 1/2	26 1/2	9 1/4	6 5/8	7 1/4	3/8	8 13/16	4	36 13/16	25 3/8	23 3/8	1	13 1/4
2311	23	11 1/4	17 3/4	30 1/2	11 3/4	10	10	1	7 3/8	3 1/2	44 13/16	30 3/8	28 3/8	1 1/4	15 7/8
3014	30	14 1/4	23 3/8	41 3/8	15	12	12	1/2	9 1/2	6	60 1/8	40	37 1/2	1 1/2	20 3/4

frame no.	weight: lbs															weight without wheel	wheel alone
	S	T	U	V	W	X	Y	Z	AB	AC	AD	AF	AG	CE			
83	13 1/8	1 1/16	7 1/8	6 3/8	5 1/8	3 3/8	3	2 7/8	1/4	1 1/2	7 1/2	15 1/16	7 3/16	3 3/4	100	30	
1035	15 3/4	1 1/16	9 1/8	8 5/8	5 5/8	3 3/8	3 3/8	3 3/8	.	2	7 1/2	2 1/2	8 11/16	3 3/4	165	40	
1355	19	1 3/16	11 1/4	10 5/8	6 3/8	4 3/8	4 1/4	4 1/2	1/4	2 1/2	11 7/16	1 7/8	10 13/32	5 3/4	290	80	
1665	22 3/4	1 1/16	12 3/4	12 1/4	6 1/2	4 3/4	6 1/4	5 3/8	1/4	3 1/2	13 13/16	2 3/8	12 5/8	7	490	170	
1985	25 5/8	1 1/16	14 3/8	13 3/8	7 7/8	6 1/8	6 1/2	6 1/2	1/4	3	15 11/16	3 3/8	13 13/16	7 7/8	840	260	
2311	30 3/8	1 3/16	16 1/4	15 3/4	9 1/4	7 1/2	7 1/16	8	3 1/2	3 1/2	18 1/2	4 3/4	17 1/4	9 1/4	1200	450	
3014	40 1/4	1 3/16	20 1/4	19 3/4	9 3/8	7 5/8	8 3/16	9 1/2	1/2	5	22 3/4	8 1/8	23 1/2	11 3/8	2450	760	

reproduced from drawing 822D459, sub 15

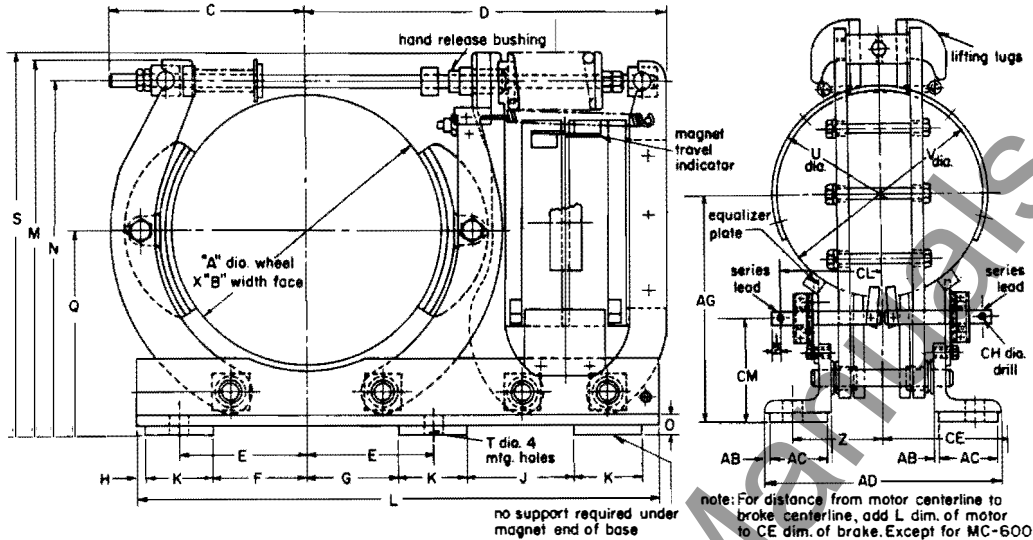
<b>approval</b>	<b>for motor:</b>	<b>for brake:</b>	<b>Westinghouse Electric Corporation:</b>
		style or s.o. no. ....	style or s.o. no. ....
	<b>purchaser:</b>	frame .....	max. torque:
	name .....	volts ..... rpm .....	shunt wound
	order no. ....	winding .....	int. .... cont. ....
machine no. ....			g.o. no. ....
			date .....
			approved by: .....
			date .....



d-c magnetic brakes

twin magnet • types TM and TMR

frames 1355, 1665, 1985, 2311 and 3014 with series coil



dimensions, inches • not to be used for construction purposes unless dimensions are approved

frame no.	wheel dia A	width of face B	C	D	E	F	G	H	J	K	L	M	N	O	Q
1355	13	5 <sup>3</sup> / <sub>4</sub>	9 <sup>7</sup> / <sub>8</sub>	19 <sup>7</sup> / <sub>8</sub>	5 <sup>3</sup> / <sub>4</sub>	4 <sup>1</sup> / <sub>2</sub>	4 <sup>1</sup> / <sub>2</sub>	1 <sup>1</sup> / <sub>2</sub>	5 <sup>5</sup> / <sub>8</sub>	2 <sup>1</sup> / <sub>2</sub>	26 <sup>1</sup> / <sub>4</sub>	18 <sup>7</sup> / <sub>8</sub>	17 <sup>7</sup> / <sub>8</sub>	2 <sup>7</sup> / <sub>32</sub>	9 <sup>7</sup> / <sub>8</sub>
1665	16	6 <sup>3</sup> / <sub>4</sub>	11 <sup>1</sup> / <sub>2</sub>	21 <sup>1</sup> / <sub>2</sub>	7 <sup>1</sup> / <sub>2</sub>	5 <sup>1</sup> / <sub>2</sub>	5 <sup>1</sup> / <sub>2</sub>	1 <sup>1</sup> / <sub>2</sub>	6 <sup>3</sup> / <sub>8</sub>	4	30 <sup>3</sup> / <sub>8</sub>	22 <sup>1</sup> / <sub>4</sub>	21	1 <sup>1</sup> / <sub>4</sub>	12 <sup>1</sup> / <sub>8</sub>
1985	19	8 <sup>3</sup> / <sub>4</sub>	14 <sup>1</sup> / <sub>2</sub>	26 <sup>1</sup> / <sub>2</sub>	9 <sup>1</sup> / <sub>4</sub>	6 <sup>5</sup> / <sub>8</sub>	7 <sup>1</sup> / <sub>4</sub>	3 <sup>3</sup> / <sub>8</sub>	8 <sup>13</sup> / <sub>16</sub>	4	36 <sup>13</sup> / <sub>16</sub>	25 <sup>3</sup> / <sub>8</sub>	23 <sup>5</sup> / <sub>8</sub>	1	13 <sup>1</sup> / <sub>2</sub>
2311	23	11 <sup>1</sup> / <sub>4</sub>	17 <sup>3</sup> / <sub>4</sub>	30 <sup>1</sup> / <sub>2</sub>	11 <sup>3</sup> / <sub>4</sub>	10	10	1	7 <sup>3</sup> / <sub>16</sub>	3 <sup>1</sup> / <sub>2</sub>	44 <sup>13</sup> / <sub>16</sub>	30 <sup>3</sup> / <sub>8</sub>	28 <sup>3</sup> / <sub>8</sub>	1 <sup>1</sup> / <sub>4</sub>	15 <sup>5</sup> / <sub>8</sub>
3014	30	14 <sup>1</sup> / <sub>4</sub>	23 <sup>3</sup> / <sub>8</sub>	41 <sup>5</sup> / <sub>8</sub>	15	12	12	1 <sup>1</sup> / <sub>2</sub>	9 <sup>1</sup> / <sub>2</sub>	6	60 <sup>1</sup> / <sub>8</sub>	40	37 <sup>1</sup> / <sub>2</sub>	1 <sup>1</sup> / <sub>2</sub>	20 <sup>3</sup> / <sub>4</sub>

frame no.	S	T	U	V	Z	AB	AC	AD	AG	CE	CH	CL	CM	weight: lbs	
														brake without wheel	wheel alone
1355	19	1 <sup>1</sup> / <sub>16</sub>	11 <sup>1</sup> / <sub>4</sub>	10 <sup>7</sup> / <sub>8</sub>	4 <sup>1</sup> / <sub>2</sub>	1/4	2 <sup>1</sup> / <sub>2</sub>	11 <sup>1</sup> / <sub>16</sub>	10 <sup>13</sup> / <sub>32</sub>	5 <sup>3</sup> / <sub>4</sub>	1 <sup>13</sup> / <sub>32</sub>	5 <sup>3</sup> / <sub>4</sub>	5 <sup>3</sup> / <sub>8</sub>	290	80
1665	22 <sup>3</sup> / <sub>4</sub>	1 <sup>1</sup> / <sub>16</sub>	12 <sup>3</sup> / <sub>4</sub>	12 <sup>1</sup> / <sub>4</sub>	5 <sup>3</sup> / <sub>8</sub>	1/4	3 <sup>1</sup> / <sub>2</sub>	13 <sup>15</sup> / <sub>16</sub>	12 <sup>5</sup> / <sub>8</sub>	7	1 <sup>13</sup> / <sub>32</sub>	6 <sup>1</sup> / <sub>8</sub>	6 <sup>1</sup> / <sub>4</sub>	490	170
1985	25 <sup>5</sup> / <sub>8</sub>	1 <sup>1</sup> / <sub>16</sub>	14 <sup>3</sup> / <sub>8</sub>	13 <sup>7</sup> / <sub>8</sub>	6 <sup>1</sup> / <sub>2</sub>	1/4	3	15 <sup>11</sup> / <sub>16</sub>	13 <sup>3</sup> / <sub>16</sub>	7 <sup>7</sup> / <sub>8</sub>	1 <sup>13</sup> / <sub>32</sub>	7 <sup>1</sup> / <sub>2</sub>	6 <sup>1</sup> / <sub>16</sub>	840	260
2311	30 <sup>3</sup> / <sub>8</sub>	1 <sup>3</sup> / <sub>16</sub>	16 <sup>1</sup> / <sub>4</sub>	15 <sup>3</sup> / <sub>4</sub>	8	3/2	3 <sup>1</sup> / <sub>2</sub>	18 <sup>1</sup> / <sub>2</sub>	17 <sup>1</sup> / <sub>4</sub>	9 <sup>1</sup> / <sub>4</sub>	1 <sup>13</sup> / <sub>32</sub>	9 <sup>13</sup> / <sub>16</sub>	8 <sup>3</sup> / <sub>8</sub>	1200	450
3014	40 <sup>1</sup> / <sub>4</sub>	1 <sup>1</sup> / <sub>16</sub>	20 <sup>1</sup> / <sub>4</sub>	19 <sup>3</sup> / <sub>4</sub>	9 <sup>1</sup> / <sub>2</sub>	1/2	5	22 <sup>3</sup> / <sub>4</sub>	23 <sup>1</sup> / <sub>2</sub>	11 <sup>3</sup> / <sub>8</sub>	1 <sup>13</sup> / <sub>32</sub>	8 <sup>1</sup> / <sub>2</sub>	8	2450	760

reproduced from drawing 822D459, sub 15

MC-600 mill motors

centerline dimensions • left hand mounted brakes supplied for MC-600 mill motors

brake frame	mill motor frame	wheel diam	face	CF	CJ	CK	brake frame	mill motor frame	wheel diam	face	CF	CJ	CK
83	2	8	3 <sup>3</sup> / <sub>4</sub>	1 <sup>5</sup> / <sub>8</sub>	4	16 <sup>1</sup> / <sub>2</sub>	1665	614	16	6 <sup>3</sup> / <sub>4</sub>	3 <sup>3</sup> / <sub>8</sub>	6 <sup>1</sup> / <sub>2</sub>	30 <sup>1</sup> / <sub>4</sub>
83	602	8	3 <sup>3</sup> / <sub>4</sub>	1 <sup>5</sup> / <sub>8</sub>	4	16 <sup>1</sup> / <sub>2</sub>	1665	616	16	6 <sup>3</sup> / <sub>4</sub>	3 <sup>3</sup> / <sub>8</sub>	6 <sup>1</sup> / <sub>2</sub>	33
83	603	8	3 <sup>3</sup> / <sub>4</sub>	1 <sup>5</sup> / <sub>8</sub>	4	18	1985	610	19	8 <sup>3</sup> / <sub>4</sub>	4 <sup>3</sup> / <sub>8</sub>	6 <sup>1</sup> / <sub>2</sub>	25 <sup>3</sup> / <sub>4</sub>
1035	603	10	3 <sup>3</sup> / <sub>4</sub>	1 <sup>7</sup> / <sub>8</sub>	4 <sup>1</sup> / <sub>4</sub>	18 <sup>1</sup> / <sub>4</sub>	1985	612	19	8 <sup>3</sup> / <sub>4</sub>	4 <sup>3</sup> / <sub>8</sub>	7 <sup>1</sup> / <sub>2</sub>	28 <sup>1</sup> / <sub>2</sub>
1035	604	10	3 <sup>3</sup> / <sub>4</sub>	1 <sup>7</sup> / <sub>8</sub>	4 <sup>1</sup> / <sub>4</sub>	19 <sup>1</sup> / <sub>4</sub>	1985	614	19	8 <sup>3</sup> / <sub>4</sub>	4 <sup>3</sup> / <sub>8</sub>	7 <sup>1</sup> / <sub>2</sub>	31 <sup>1</sup> / <sub>4</sub>
1035	606	10	3 <sup>3</sup> / <sub>4</sub>	1 <sup>7</sup> / <sub>8</sub>	3 <sup>1</sup> / <sub>2</sub>	19 <sup>1</sup> / <sub>2</sub>	1985	616	19	8 <sup>3</sup> / <sub>4</sub>	4 <sup>3</sup> / <sub>8</sub>	7	33 <sup>1</sup> / <sub>2</sub>
1035	608	10	3 <sup>3</sup> / <sub>4</sub>	1 <sup>7</sup> / <sub>8</sub>	3 <sup>5</sup> / <sub>8</sub>	21 <sup>5</sup> / <sub>8</sub>	1985	618	19	8 <sup>3</sup> / <sub>4</sub>	4 <sup>3</sup> / <sub>8</sub>	7 <sup>1</sup> / <sub>2</sub>	35 <sup>1</sup> / <sub>2</sub>
1035	610	10	3 <sup>3</sup> / <sub>4</sub>	1 <sup>7</sup> / <sub>8</sub>	3 <sup>5</sup> / <sub>8</sub>	22 <sup>7</sup> / <sub>8</sub>	1985	620	19	8 <sup>3</sup> / <sub>4</sub>	4 <sup>3</sup> / <sub>8</sub>	9 <sup>1</sup> / <sub>4</sub>	39 <sup>3</sup> / <sub>4</sub>
1355	604	13	5 <sup>3</sup> / <sub>4</sub>	2 <sup>7</sup> / <sub>8</sub>	5	20	1985	622	19	8 <sup>3</sup> / <sub>4</sub>	4 <sup>3</sup> / <sub>8</sub>	8 <sup>1</sup> / <sub>8</sub>	41 <sup>5</sup> / <sub>8</sub>
1355	606	13	5 <sup>3</sup> / <sub>4</sub>	2 <sup>7</sup> / <sub>8</sub>	5	21	1985	624	19	8 <sup>3</sup> / <sub>4</sub>	4 <sup>3</sup> / <sub>8</sub>	8 <sup>3</sup> / <sub>4</sub>	45 <sup>1</sup> / <sub>4</sub>
1355	608	13	5 <sup>3</sup> / <sub>4</sub>	2 <sup>7</sup> / <sub>8</sub>	5 <sup>3</sup> / <sub>8</sub>	23 <sup>3</sup> / <sub>8</sub>	2311	612	23	11 <sup>1</sup> / <sub>4</sub>	5 <sup>5</sup> / <sub>8</sub>	8 <sup>1</sup> / <sub>4</sub>	29 <sup>1</sup> / <sub>4</sub>
1355	610	13	5 <sup>3</sup> / <sub>4</sub>	2 <sup>7</sup> / <sub>8</sub>	5 <sup>3</sup> / <sub>8</sub>	24 <sup>3</sup> / <sub>8</sub>	2311	614	23	11 <sup>1</sup> / <sub>4</sub>	5 <sup>5</sup> / <sub>8</sub>	8 <sup>1</sup> / <sub>4</sub>	32
1355	612	13	5 <sup>3</sup> / <sub>4</sub>	2 <sup>7</sup> / <sub>8</sub>	5 <sup>3</sup> / <sub>8</sub>	26 <sup>3</sup> / <sub>8</sub>	2311	616	23	11 <sup>1</sup> / <sub>4</sub>	5 <sup>5</sup> / <sub>8</sub>	8 <sup>1</sup> / <sub>4</sub>	34 <sup>3</sup> / <sub>4</sub>
1355	614	13	5 <sup>3</sup> / <sub>4</sub>	2 <sup>7</sup> / <sub>8</sub>	5 <sup>3</sup> / <sub>8</sub>	29 <sup>1</sup> / <sub>8</sub>	2311	618	23	11 <sup>1</sup> / <sub>4</sub>	5 <sup>5</sup> / <sub>8</sub>	8 <sup>3</sup> / <sub>4</sub>	36 <sup>3</sup> / <sub>4</sub>
1355	616	13	5 <sup>3</sup> / <sub>4</sub>	2 <sup>7</sup> / <sub>8</sub>	5 <sup>3</sup> / <sub>8</sub>	37 <sup>7</sup> / <sub>8</sub>	2311	620	23	11 <sup>1</sup> / <sub>4</sub>	5 <sup>5</sup> / <sub>8</sub>	8 <sup>3</sup> / <sub>4</sub>	39 <sup>1</sup> / <sub>4</sub>
1665	606	16	6 <sup>3</sup> / <sub>4</sub>	3 <sup>3</sup> / <sub>8</sub>	6 <sup>1</sup> / <sub>2</sub>	22 <sup>1</sup> / <sub>2</sub>	2311	622	23	11 <sup>1</sup> / <sub>4</sub>	5 <sup>5</sup> / <sub>8</sub>	8 <sup>3</sup> / <sub>4</sub>	42 <sup>1</sup> / <sub>4</sub>
1665	608	16	6 <sup>3</sup> / <sub>4</sub>	3 <sup>3</sup> / <sub>8</sub>	6 <sup>1</sup> / <sub>2</sub>	24 <sup>1</sup> / <sub>2</sub>	2311	624	23	11 <sup>1</sup> / <sub>4</sub>	5 <sup>5</sup> / <sub>8</sub>	9 <sup>1</sup> / <sub>4</sub>	45 <sup>3</sup> / <sub>4</sub>
1665	610	16	6 <sup>3</sup> / <sub>4</sub>	3 <sup>3</sup> / <sub>8</sub>	6 <sup>1</sup> / <sub>2</sub>	25 <sup>3</sup> / <sub>4</sub>	3014	620	30	14 <sup>1</sup> / <sub>4</sub>	7 <sup>1</sup> / <sub>8</sub>	10 <sup>1</sup> / <sub>4</sub>	40 <sup>3</sup> / <sub>4</sub>
1665	612	16	6 <sup>3</sup> / <sub>4</sub>	3 <sup>3</sup> / <sub>8</sub>	6 <sup>1</sup> / <sub>2</sub>	27 <sup>1</sup> / <sub>2</sub>	3014	622	30	14 <sup>1</sup> / <sub>4</sub>	7 <sup>1</sup> / <sub>8</sub>	10 <sup>3</sup> / <sub>4</sub>	44 <sup>1</sup> / <sub>4</sub>
							3014	624	30	14 <sup>1</sup> / <sub>4</sub>	7 <sup>1</sup> / <sub>8</sub>	10 <sup>3</sup> / <sub>4</sub>	47 <sup>1</sup> / <sub>4</sub>



# d-c magnetic brakes

## types TM and TMR

### frames 43 and 63

with rectifier available for a-c operation

dimension sheet

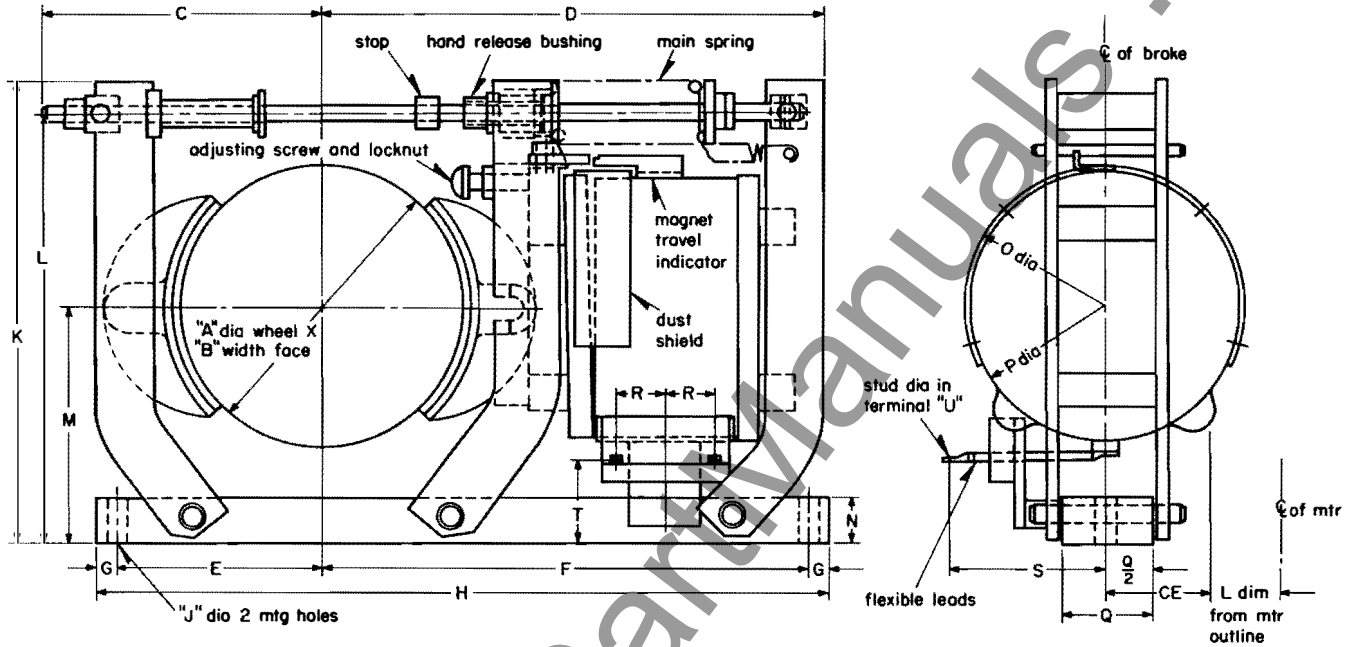
5240

page 31

frames 43 and 63 • single magnet type

see dimension sheet 5240, pages 29 and 30, for frames 83 to 3014 • twin magnet type

standard left hand mounting shown



note: Distance from centerline of motor to centerline of brake. Add L dim from motor outline plus CE dim of broke.

dimensions, inches • not to be used for construction purposes unless dimensions are approved

frame no.	wheel dia A	width of face B	C	D	E	F	G	H	J	K	L	M	N	dia. O	dia. P
43	4½	3⅞	4 <sup>11</sup> / <sub>16</sub>	8¾	3 <sup>3</sup> / <sub>16</sub>	8 <sup>11</sup> / <sub>16</sub>	7/16	12¾	7/16	8 <sup>1</sup> / <sub>16</sub>	7 <sup>7</sup> / <sub>8</sub>	4¼	1	4 <sup>13</sup> / <sub>16</sub>	4 <sup>9</sup> / <sub>16</sub>
63	6	3⅞	5 <sup>15</sup> / <sub>16</sub>	10 <sup>11</sup> / <sub>16</sub>	4 <sup>3</sup> / <sub>8</sub>	10 <sup>3</sup> / <sub>8</sub>	7/16	15 <sup>5</sup> / <sub>8</sub>	7/16	9 <sup>1</sup> / <sub>16</sub>	9 <sup>1</sup> / <sub>8</sub>	5	1	5 <sup>7</sup> / <sub>8</sub>	5 <sup>5</sup> / <sub>8</sub>

frame no.	Q	R	S	T	dia. U	CE	weight: lbs	
							brake without wheel	wheel alone
43	2	½	2 <sup>7</sup> / <sub>8</sub>	1¾	¼	2 <sup>7</sup> / <sub>8</sub>	38	6
63	2	1⅛	3 <sup>1</sup> / <sub>8</sub>	1¾	¼	3½	60	10

reproduced from drawing 645-C-192, sub 1

**approval**

purchaser:  
name.....  
order no.....  
machine no.....

for motor:  
style or s.o. no.....  
frame..... hp.....  
volts..... rpm.....  
winding.....

for brake:  
style or s.o. no.....  
frame.....  
max. torque:  
series wound  
½ hr..... 1 hr.....  
shunt wound  
int..... cont.....

Westinghouse Electric Corporation:  
g.o. no.....  
date.....  
approved by:.....  
date.....



**d-c magnetic brakes**  
types TM and TMR • twin magnet

dimension sheet

**5240**

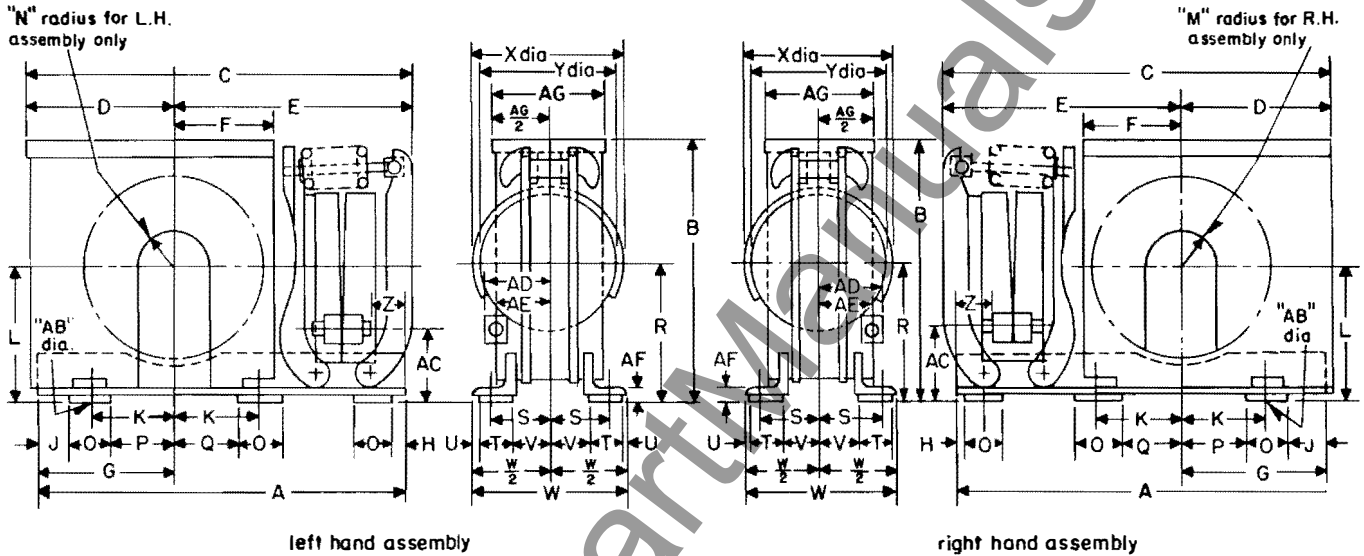
page 33

frames 83 to 2311  
with rectifier available for a-c operation

**drip-proof wheel cover**

frames 83 to 2311

for brake dimensions, see dimension sheet 5240, pages 29 and 30



dimensions, inches • not to be used for construction purposes unless dimensions are approved

frame no.	A	B	C	D	E	F	G	H	J	K	L	M	N	O	P	Q
83	18 1/4	14 1/4	21 15/16	7 3/16	14 3/4	5 5/8	4 1/4	1	1/4	3 3/4	7	1	1	1 1/2	2 1/2	2 1/2
1035	22 1/4	17 7/16	25 1/4	8 1/4	17	7	5 1/4	2 1/4	1/4	4	8 3/8	2 1/4	2 1/4	2	3	3
1355	26 1/4	19 13/16	30 3/8	10 1 1/2	19 3/8	8 3/8	7 1/2	3 5/8	1/2	5 3/4	9 7/8	3 1/8	3 1/8	2 1/2	4 1 1/2	4 1 1/2
1665	30 7/8	24 3/8	33 11/16	12 3/16	21 1/2	9 3/16	10	1	1 1/2	7 1/2	12 1/8	2 1/8	3 3/4	4	5 1/2	5 1/2
1985	36 13/16	26	41 3/4	15 1/4	26 1/2	11 1/4	11	1 3/4	3/8	9 1/4	13 1/4	4	4	4	6 5/8	7 1/4
2311	44 13/16	31 1/16	49 1/16	18 3/16	30 1/2	12 1/2	14 1/2	6	1	3 1/2	15 5/8	4 5/8	4 5/8	3 1/2	10	10

frame no.	R	S	T	U	V	W	X	Y	Z	AB	AC	AD	AE	AF	AG
83	7 3/16	2 7/8	1 1/2	1/4	2	7 1/2	7 7/8	6 5/8	1 5/16	1 1/16	3	5 1/8	3 3/8	3/8	7 5/8
1035	8 11/16	3 3/8	2	1/4	1 3/4	7 1/2	9 1/8	8 5/8	2 1/2	1 1/16	3 3/8	5 1/8	3 3/8	1	6 1/2
1355	10 13/32	4 1/2	2 1/2	1/4	2 31/32	11 1/16	11 1/4	10 7/8	1 1/8	1 3/16	4 1/4	6 3/8	4 5/8	37/32	11 1/8
1665	12 5/8	5 3/8	3 1/2	1/4	2 31/32	13 15/16	12 3/4	12 1/4	2 1/16	1 1/16	6 1/4	6 1/2	4 3/4	1 1/4	11 1/8
1985	13 5/16	6 1/2	3 1/2	1/4	4 1 1/2	15 11/16	14 3/8	13 7/8	3 5/8	1 1/16	6 1/2	7 7/8	6 3/8	1	14 1/16
2311	17 1/4	8	3 1/2	1/4	5 3/4	18 1/2	16 1/4	15 3/4	4 3/4	1 1/16	7 1/16	9 1/4	7 1/2	1 1/4	16 1/2

reproduced from drawing 641-C-441, sub 7

**approval**

purchaser:

name

order no.

machine no.

for motor:

style or s.o. no.

frame .. hp.

volts .. rpm

winding

for brake:

style or s.o. no.

frame

max. torque:

series wound  
1/2 hr. 1 hr.

shunt wound  
int. cont.

Westinghouse Electric Corporation:

g.o. no.

date

approved by:

date

November, 1964  
new information  
mailed to: E/1115/DB; D/784/DS; C/192/DB

Westinghouse Electric Corporation  
Motor and Gearing Division: Buffalo Plant • Buffalo, N.Y. 14240  
printed in U.S.A.





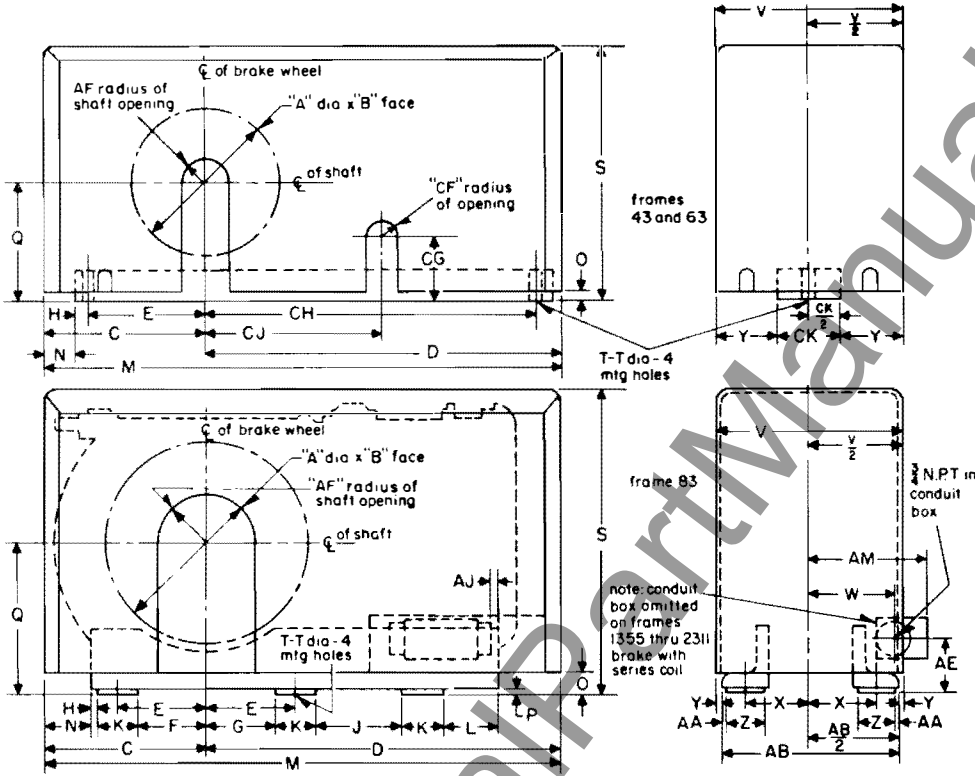
**d-c magnetic brakes**  
**types TM and TMR · twin magnet**  
**frames 43 to 3014**  
**with rectifier available for a-c operation**

dimension  
sheet  
**5240**  
page 35

**weatherproof—drip-proof covers**

frames 43 to 83

for brake dimensions, see dimension sheet 5240, pages 29 and 31  
 see page 36 for weatherproof—drip-proof covers for frames 1035 to 3014



brake frame no.	mill motor frame ①	ctr. line of motor to ctr. line of brake
83	MC-602	16½

① For all combinations, other than millmotors and brake, use 'CE' dimension of brake plus 'L' dimension from standard motor outline.

dimensions, inches • not to be used for construction purposes unless dimensions are approved

frame no.	wheel dia A	width of face B	C	D	E	F	G	H	I	K	L	M	N	O	P	Q	S
43	4½	3⅛	5⅞	9⅞	3⅞	...	...	⅞	...	...	...	14⅞	11⅞	⅞	...	4¼	9⅞
63	6	3⅞	6½	11¼	4⅞	...	...	⅞	...	...	...	17¼	11⅞	⅞	...	5	11¼
83	8	3¼	7⅞	17⅞	3¼	2½	2½	¼	7½	1½	1	24⅞	2⅞	⅞	¼	7	14⅞

frame no.	T-T	V	W	X	Y	Z	AA	AB	AE	AF	AJ	weight, lbs		
												brake without wheel	wheel alone	enclosure alone
43	⅞	6	...	2	...	...	...	...	...	1	...	38	6	10
63	⅞	7	...	2½	...	...	...	...	...	1	...	60	10	15
83	1⅞	7⅞	3⅞	2⅞	⅞	1½	¼	7½	3	1	1⅞	100	30	21

frame no.	CE	CF	CG	CH	CJ	CK
43	3½	⅞	1¾	8⅞	5⅞	2
63	4	⅞	1¾	10⅞	7¼	2
83	4¼	...	...	...	...	...

reproduced from drawing 822-D-885, sub 11

<b>approval</b>	for motor:	for brake:	Westinghouse Electric Corporation:
	purchaser:	style or s.o. no.	style or s.o. no. ....
	name .....	frame	max. torque:
	order no. ....	frame hp.	series wound
machine no. ....	volts rpm	½ hr. .... 1 hr. ....	g.o. no. ....
	winding	shunt wound	date .....
		int. .... cont. ....	approved by: .....
			date .....





**d-c magnetic brakes**  
types TM and TMR • twin magnet

dimension  
sheet

**5240**

page 37

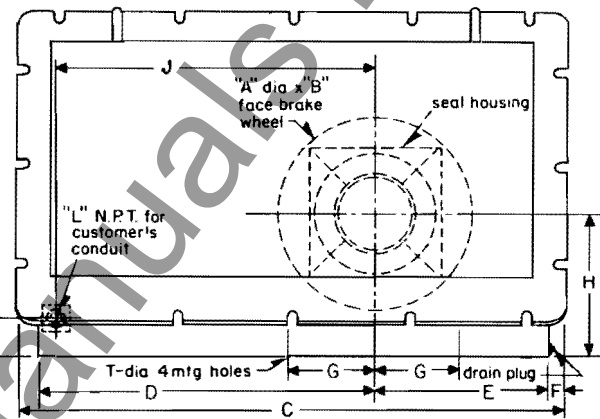
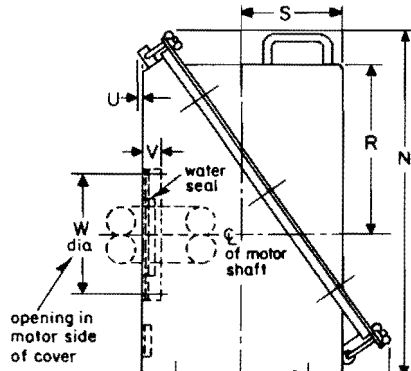
frames 83 to 1665  
with rectifier available for a-c operation

**watertight—dusttight covers**

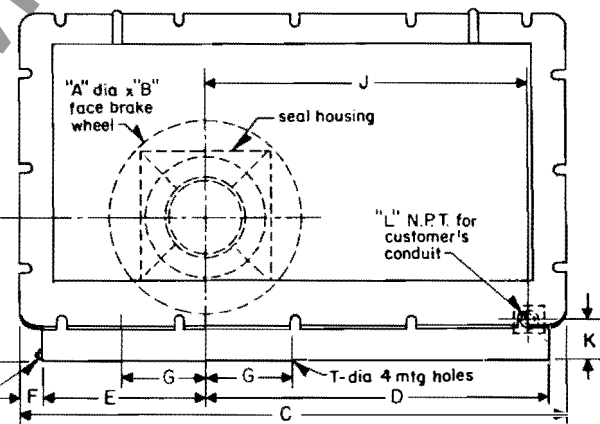
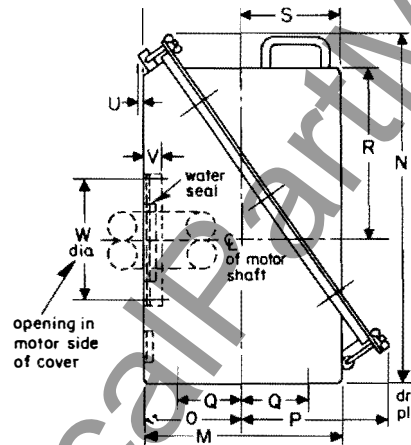
frames 83 to 1665

for brake dimensions, see dimension sheet 5240, pages 29 and 30

left hand assembly of  
watertight—dusttight covers



right hand assembly of  
watertight—dusttight covers



dimensions, inches • not to be used for construction purposes unless dimensions are approved

frame no.	wheel dia A	width of face B	C	D	E	F	G	H	J	K	L
83	8	3 1/4	28 5/8	16 1/4	8	1 1/4	3 1/4	7 1/8	17 1/8	2 1/4	3/4
1035	10	3 3/4	31 3/8	20 1/4	9 1/8	1 1/4	4	8 1/2	19 1/2	2 3/8	3/4
1355	13	5 1/4	37 3/8	23 1/2	11 3/8	1 1/4	5 3/4	10	22 1/4	2 7/8	1
1665	16	6 1/4	41	25 1/2	13	1 1/4	7 1/2	12 1/4	21 1/2	3 1/2	1

frame no.	M	N	O	P	Q	R	S	T	U	V	W	weight, lbs		
												cover alone	wheel alone	brake without wheel
83	10 1/4	17 5/8	4 1/2	9	2 7/8	8 1/4	5 13/16	1 1/16	1/4	1 1/16	4	85	30	100
1035	10 13/16	20 7/16	5 1/16	8 11/16	3 1/8	9 9/16	5 7/8	1 1/16	3/8	1 3/16	4	110	40	165
1355	13 11/16	24	6 11/16	9 11/16	4 1/2	11 3/4	7	1 3/16	1/2	1 7/16	4	140	80	290
1665	15 1/4	27 3/8	7 5/8	10 5/8	5 3/8	13 3/8	7 5/8	1 1/16	3/8	1 7/16	5	200	170	490

reproduced from drawing 834-D-528, sub 5

<b>approval</b>	<b>for motor:</b>	<b>for brake:</b>	<b>Westinghouse Electric Corporation:</b>
		style or s.o. no. ....	style or s.o. no. ....
	<b>purchaser:</b>	frame. ....	frame. ....
	name .....	max. torque:	max. torque:
	order no. ....	series wound	series wound
machine no. ....	1/2 hr. .... 1 hr. ....	1/2 hr. .... 1 hr. ....	g.o. no. ....
	volts ..... rpm .....	shunt wound	date .....
	winding	int. .... cont. ....	approved by: .....
			date .....

July, 1965  
supersedes dimension sheet 5240, page 37, dated November, 1964  
mailed to: E/1115/DB; D/784/DS; C/192/DB

**Westinghouse Electric Corporation**  
**Motor and Gearing Division:**  
**Buffalo Plant • Buffalo, N.Y. 14240**  
printed in U.S.A.



**d-c magnetic brakes**  
types TM and TMR • twin magnet

dimension  
sheet

**5240**

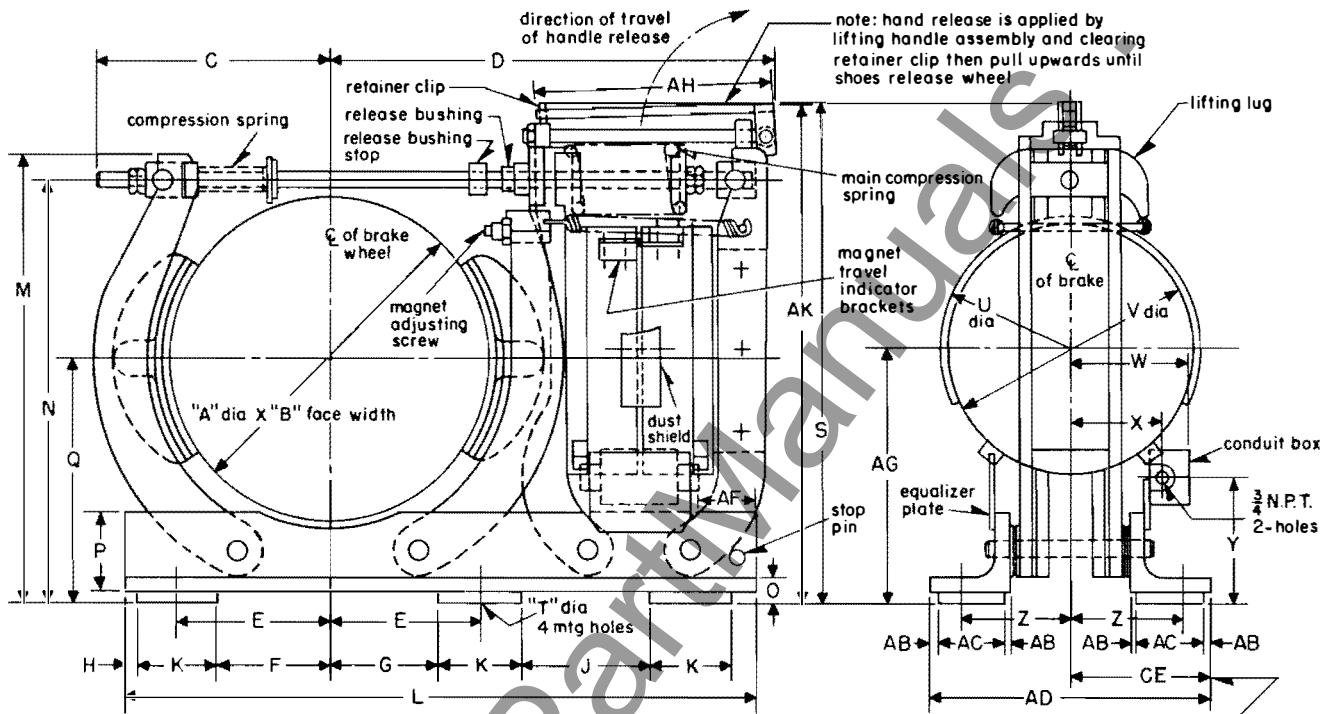
page 39

frames 83 to 1665

with rectifier available for a-c operation

with open-type hand release lever

frames 83 to 1665



note: for centerline distance from motor centerline to brake centerline add (L) dimension of motor to (CE) dimension of brake

dimensions, inches • not to be used for construction purposes unless dimensions are approved

frame no.	wheel dia A	width of face B	C	D	E	F	G	H	J	K	L	M	N	O	P	Q	S
83	8	3 1/4	6 1/2	15 3/8	3 1/4	2 1/2	2 1/2	1/4	7 1/2	1 1/2	18 1/4	13	12 1/8	5/8	2 1/2	7	14 1/2
1035	10	3 3/4	7 5/8	17 1/16	4	3	3	1/4	7 3/4	2	22 1/4	15 1/2	14 5/8	1	2 1/2	8 3/8	17 1/8
1355	13	5 3/4	9 7/8	20 1/16	5 3/4	4 1/2	4 1/2	1/2	5 5/8	2 1/2	26 1/4	18 7/8	17 7/8	27/32	4	9 7/8	20 1/16
1665	16	6 3/4	11 1/2	22 1/16	7 1/2	5 1/2	5 1/2	1/2	6 5/8	4	30 7/8	22 1/2	21 1/4	1 1/4	4	12 1/8	24 1/2

frame no.	T	U	V	W	X	Y	Z	AB	AC	AD	AF	AG	CE	AH	AK	weight, lbs	
																brake without wheel	wheel alone
83	1 1/16	7 1/8	6 3/8	5 1/8	3 3/8	3	2 7/8	1/4	1 1/2	7 1/2	1 3/16	7 3/16	3 3/4	9	14 5/8	100	30
1035	1 1/16	9 1/8	8 5/8	5 1/8	3 3/8	3 3/8	3 1/8	2	7 1/2	2 1/2	2 1/2	8 11/16	3 3/4	10	17 1/4	165	40
1355	1 3/16	11 1/4	10 7/8	6 3/8	4 5/8	4 1/4	4 1/2	1/4	2 1/2	11 1/16	1 7/8	10 13/32	5 3/4	11 3/8	20 5/8	290	80
1665	1 1/16	12 3/4	12 1/4	6 1/2	4 3/4	6 1/4	5 3/8	1/4	3 1/2	13 1/16	2 5/8	12 5/8	7	16	24 5/8	490	170

reproduced from drawing 834-D-251, sub 4

**approval**

purchaser:

name

order no.

machine no.

for motor:

style or s.o. no.

frame ..... hp.

volts ..... rpm

winding

for brake:

style or s.o. no.

frame

max. torque:

series wound

1/2 hr. .... 1 hr. ....

shunt wound

int. .... cont. ....

Westinghouse Electric Corporation:

g.o. no.

date

approved by:

date

November, 1964  
new information  
mailed to: E/1115/DB; D/784/DS; C/192/DB

Westinghouse Electric Corporation  
Motor and Gearing Division: Buffalo Plant • Buffalo, N.Y. 14240  
printed in U.S.A.