



INSTALLATION • OPERATION • MAINTENANCE INSTRUCTIONS

OPEN DROPOUT FUSE CUTOUTS

Type DX

Open Fuse Cutout • Heavy Duty Open Cutout • Open Disconnect

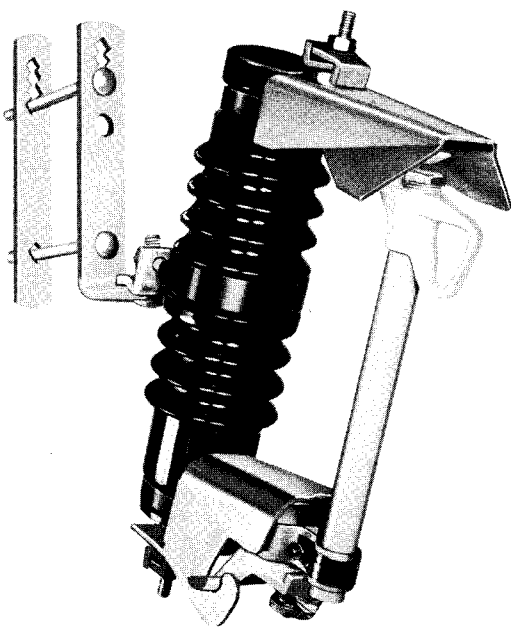


FIG. 1. Type DX Open Fuse Cutout

The Type DX cutout is designed for easy installation, minimum maintenance, and positive operation. Properly installed, this sturdy cutout will give many years of excellent service. The package contains the following:

- 1—Type DX Open Cutout
- 1—Fuse Holder
- 1—Mounting Bracket, including:
 - 1—Front Plate
 - 1—Back Plate
 - 2— $\frac{5}{16}$ in. x 5 in. carriage bolts
 - 2— $\frac{5}{16}$ in. washers
 - 2— $\frac{5}{16}$ in. nuts
 - 1— $\frac{1}{2}$ in. external tooth lockwasher
 - 1— $\frac{1}{2}$ in. lockwasher
 - 1— $\frac{1}{2}$ in. washer
 - 1— $\frac{1}{2}$ in. nut

A fuse link is not included. The Type DX Cutout will operate satisfactorily with any NEMA Standard fuse link, up to 100-ampere rating. Cutouts on substation mounting include porcelain and base assembly and the fuse holder.

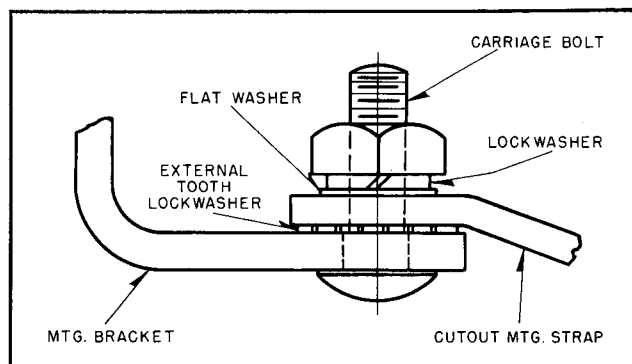
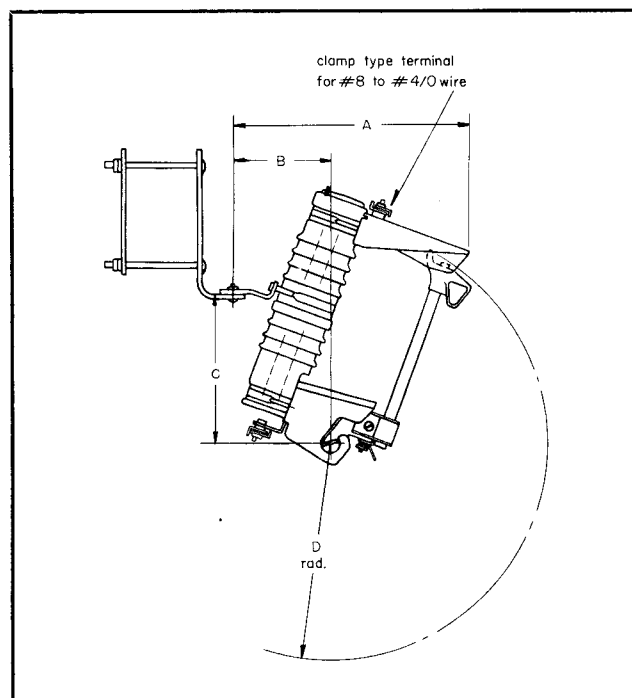


FIG. 2. Cutout Properly Bolted to Mounting Bracket



KV	AMPS	DIMENSIONS*			
		A	B	C	D
5.2	100	$12\frac{5}{8}$	$4\frac{13}{16}$	$\frac{7}{8}$	$11\frac{11}{16}$
7.8	100	$12\frac{3}{8}$	$4\frac{13}{16}$	$\frac{7}{8}$	$11\frac{11}{16}$
15.0	100	$13\frac{3}{8}$	$4\frac{1}{4}$	9	$14\frac{15}{16}$

* Cutout complete with NEMA standard mounting bracket
Style # 1533 266

FIG. 3. Outline Dimensions

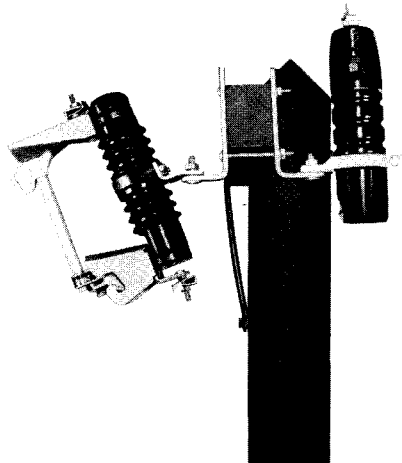


FIG. 4. Combination Mounting with Type LX Arrester

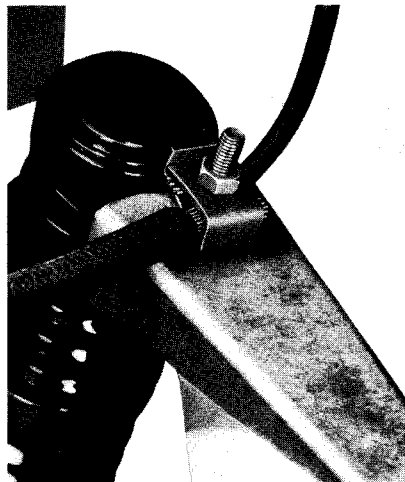


FIG. 5. Terminal Will Clamp Combination of No. 00 and No. 6 Wire

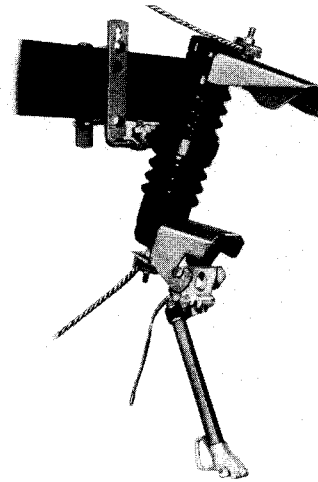


FIG. 6. Position of Cutout When Blown

MOUNTING THE CUTOUT

The mounting bracket included fits standard crossarms up to 4 by 5 in. (Larger bracket can be furnished.) The bracket should be mounted in the upright position as shown in Fig. 1. For pole or wall mounting, discard the back plate and bolts of the enclosed bracket and fasten the front plate to the pole or wall with lag screws or through bolts. For combination mounting with lightning arrester, discard the back plates of both brackets and mount as shown in Fig. 4.

The cutout should be mounted at a location where there are no obstructions to prevent its operation.

WIRING THE CUTOUT

Remove the fuse holder (or disconnect blade) from the cutout. Place the load lead in the bottom terminal and the hot lead (and arrester lead if desired) in the top terminal. Tighten the terminals securely. (The terminals work best with about 15 foot-pounds torque.)

The terminals are strongly made of tin-plated silicon bronze and will accommodate both copper and aluminum cable and wire. They will clamp satisfactorily wire sizes up to 4/0 ACSR or combinations of wire sizes including 2/0 stranded copper with #6 solid copper.

PLACING IN SERVICE

The Type DX cutout and DX disconnect are completely hookstick operated. To place the cutout in service, simply hang the fuse holder on the hookstick and with the hookstick hang the fuse holder from the bottom hood of the cutout. Close the cutout by inserting the hookstick in the hook-eye and swinging the fuse holder into operating position.

REMOVING FROM SERVICE

If the fuse holder is in the drop-out position, it may be removed from the cutout by inserting the hookstick in the keyhole in the hanger casting and lifting the fuse holder from the bottom hood.

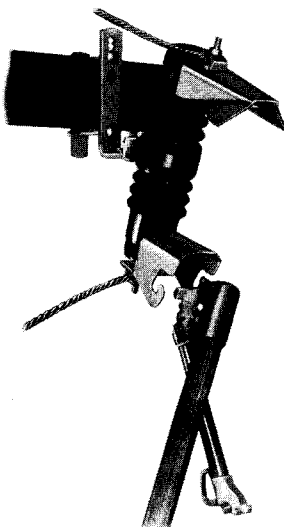


FIG. 7. Hang Fuseholder from Bottom Hood of Cutout

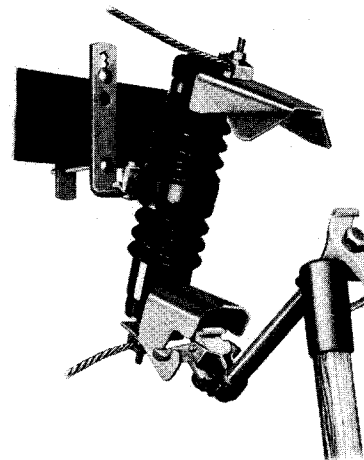
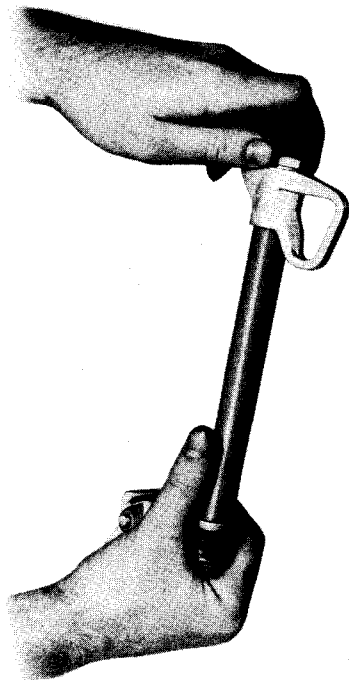
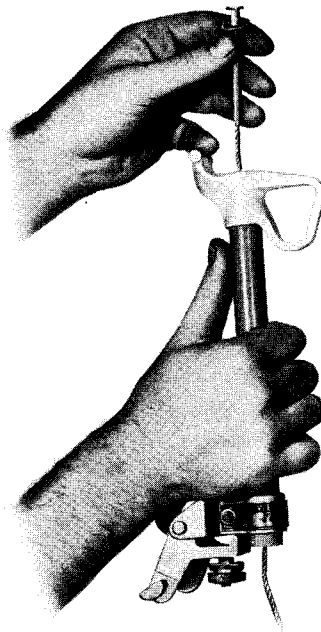


FIG. 8. Close Cutout by Swinging Fuseholder into Operating Position



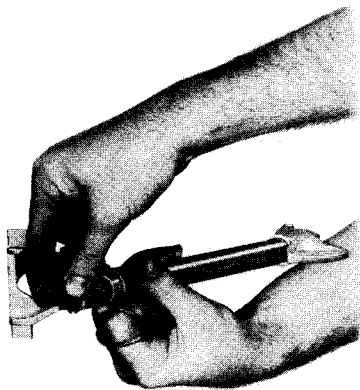
A. Remove Cap from Hookeye



B. Insert Link into Fuse Holder



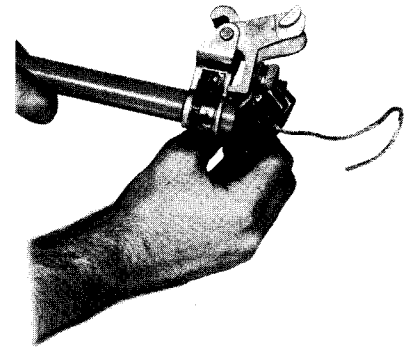
C. Replace Fuse Cap on Hookeye



D. Wrap Tail of Fuse Link
Clockwise Once Around Binding Post



E. Tighten Contact Nut



F. Cut off Excess Fuse Tail
One-Half Inch from Hanger Casting

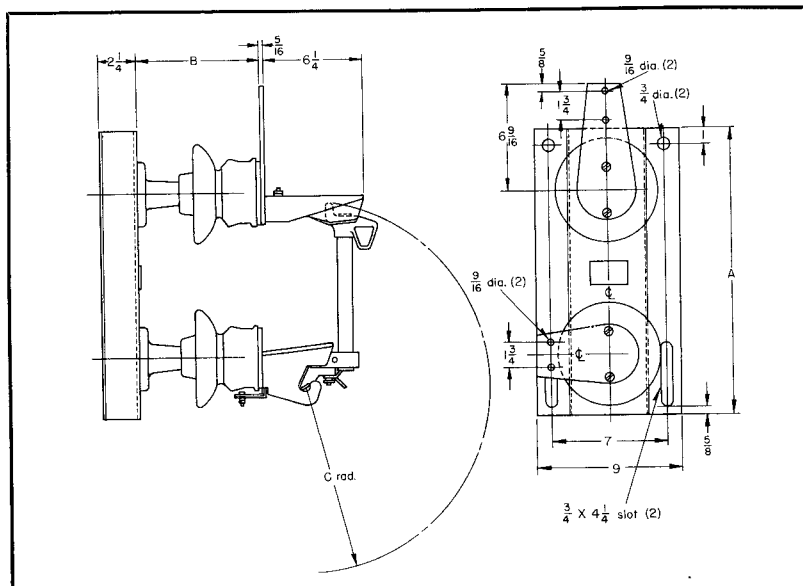
FIG. 9. Procedure for Inserting New Link in Fuse Holder

If the fuse holder is in the operating position, the load must be removed before opening the cutout. When load has been cut off simply place the hookstick in the hookeye and pull the cutout open. Allow the fuse holder to fall to the dropout position and lift the fuse holder from the bottom hood with the hookstick as described on page 2.

MAINTENANCE

The Type DX fuse cutout is of durable construction and will give years of service without maintenance. However, when subjected to severe service or many years of normal service, it may be necessary to replace the fuse holder if the bore diameter of the fuse tube becomes excessive due to erosion.

TYPE DX FUSE CUTOUTS

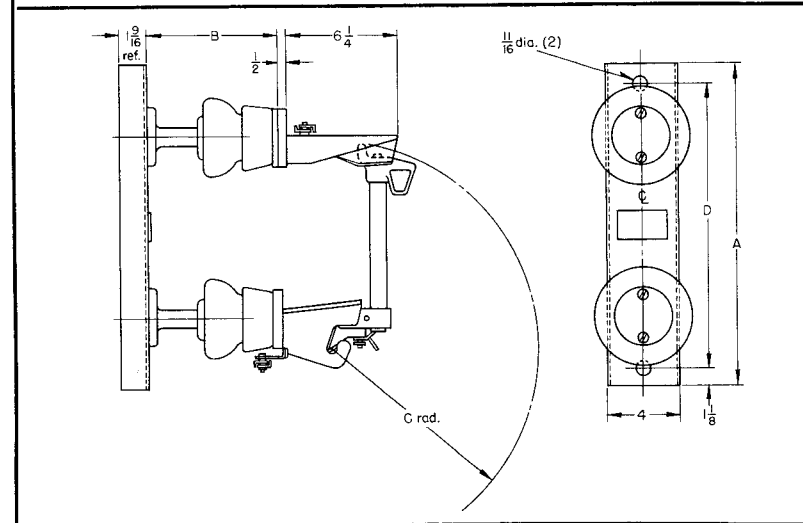


OUTLINE DIMENSIONS

Type DX Cutouts

CHANNEL MOUNTED
With Two NEMA Insulators

KV	AMPERES	DIMENSIONS		
		A	B	C _R
7.8	100	18 1/4	7 3/4	11 11/16
15.0	100	21 1/2	10 1/4	14 15/16



OUTLINE DIMENSIONS

Type DX Cutouts

CHANNEL MOUNTED
With Two
Sub-Standard Insulators

KV	AMPERES	DIMENSIONS			
		A	B	C _R	D
7.8	100	18 1/4	7 1/4	11 11/16	16
15.0	100	21 1/2	8 1/4	14 15/16	19 1/4

RENEWAL PARTS

KV	DESCRIPTION	FUSE CUTOUT COMPLETE (With Bracket)	FUSE HOLDER OR DISCONNECT BLADE ONLY
OPEN FUSE CUTOUTS			
5.2	Open Fuse Cutout	1733 404	1733 415
5.2	Heavy Duty Open Cutout	1743 189	1733 634
5.2	Open Disconnect	1743 190	1733 421
7.8	Open Fuse Cutout	1733 405	1733 416
7.8	Heavy Duty Open Cutout	1733 408	1733 419
7.8	Open Disconnect	1733 410	1733 421
15.0	Open Fuse Cutout	1733 406	1733 417
15.0	Heavy Duty Open Cutout	1733 409	1733 420
15.0	Open Disconnect	1733 411	1733 422

KV	DESCRIPTION	FUSE CUTOUT COMPLETE	FUSE HOLDER OR DISCONNECT BLADE ONLY
CHANNEL MTD. ON SUBSTANDARD INSULATORS			
7.8	Cutout	1733 426	1733 416
7.8	Heavy Duty Cutout	1743 185	1733 419
7.8	Disconnect	1733 430	1733 421
15.0	Cutout	1733 427	1733 417
15.0	Heavy Duty Cutout	1743 186	1733 420
15.0	Disconnect	1733 431	1733 422
CHANNEL MTD. ON NEMA STANDARD INSULATORS			
7.8	Cutout	1733 428	1733 416
7.8	Heavy Duty Cutout	1743 187	1733 419
7.8	Disconnect	1733 432	1733 421
15.0	Cutout	1733 429	1733 417
15.0	Heavy Duty Cutout	1443 188	1733 420
15.0	Disconnect	1733 433	1733 422



WESTINGHOUSE ELECTRIC CORPORATION
EAST PITTSBURGH PLANT • SWITCHGEAR DIVISION • EAST PITTSBURGH, PA.

Printed in U.S.A.