

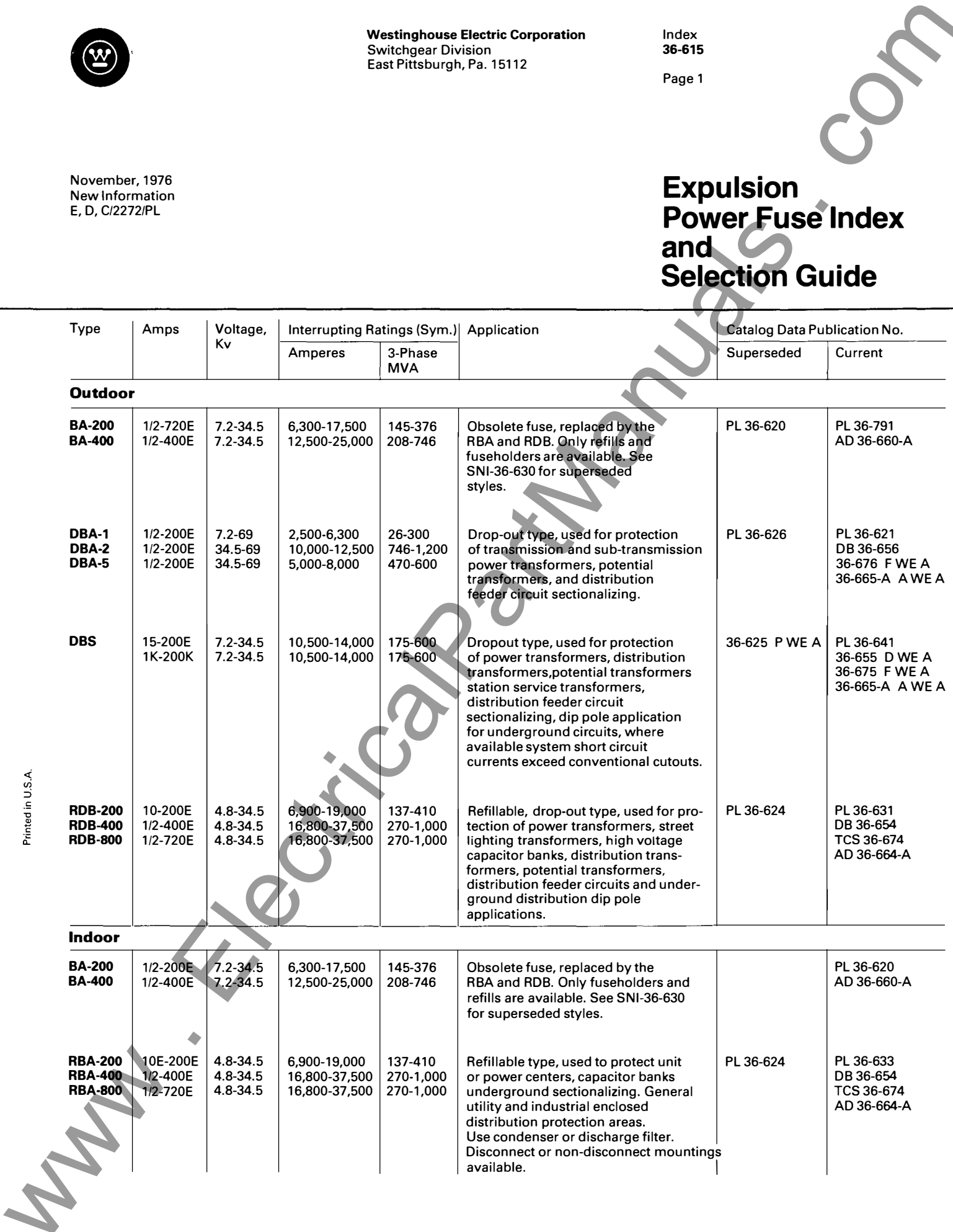


November, 1976
New Information
E, D, C/2272/PL

Expulsion Power Fuse Index and Selection Guide

Type	Amps	Voltage, Kv	Interrupting Ratings (Sym.)		Application	Catalog Data Publication No.	
			Amperes	3-Phase MVA		Superseded	Current
Outdoor							
BA-200 BA-400	1/2-720E 1/2-400E	7.2-34.5 7.2-34.5	6,300-17,500 12,500-25,000	145-376 208-746	Obsolete fuse, replaced by the RBA and RDB. Only refills and fuseholders are available. See SNI-36-630 for superseded styles.	PL 36-620	PL 36-791 AD 36-660-A
DBA-1 DBA-2 DBA-5	1/2-200E 1/2-200E 1/2-200E	7.2-69 34.5-69 34.5-69	2,500-6,300 10,000-12,500 5,000-8,000	26-300 746-1,200 470-600	Drop-out type, used for protection of transmission and sub-transmission power transformers, potential transformers, and distribution feeder circuit sectionalizing.	PL 36-626	PL 36-621 DB 36-656 36-676 F WE A 36-665-A A WE A
DBS	15-200E 1K-200K	7.2-34.5 7.2-34.5	10,500-14,000 10,500-14,000	175-600 175-600	Dropout type, used for protection of power transformers, distribution transformers, potential transformers station service transformers, distribution feeder circuit sectionalizing, dip pole application for underground circuits, where available system short circuit currents exceed conventional cutouts.	36-625 P WE A	PL 36-641 36-655 D WE A 36-675 F WE A 36-665-A A WE A
RDB-200 RDB-400 RDB-800	10-200E 1/2-400E 1/2-720E	4.8-34.5 4.8-34.5 4.8-34.5	6,900-19,000 16,800-37,500 16,800-37,500	137-410 270-1,000 270-1,000	Refillable, drop-out type, used for protection of power transformers, street lighting transformers, high voltage capacitor banks, distribution transformers, potential transformers, distribution feeder circuits and underground distribution dip pole applications.	PL 36-624	PL 36-631 DB 36-654 TCS 36-674 AD 36-664-A
Indoor							
BA-200 BA-400	1/2-200E 1/2-400E	7.2-34.5 7.2-34.5	6,300-17,500 12,500-25,000	145-376 208-746	Obsolete fuse, replaced by the RBA and RDB. Only fuseholders and refills are available. See SNI-36-630 for superseded styles.		PL 36-620 AD 36-660-A
RBA-200 RBA-400 RBA-800	10E-200E 1/2-400E 1/2-720E	4.8-34.5 4.8-34.5 4.8-34.5	6,900-19,000 16,800-37,500 16,800-37,500	137-410 270-1,000 270-1,000	Refillable type, used to protect unit or power centers, capacitor banks underground sectionalizing. General utility and industrial enclosed distribution protection areas. Use condenser or discharge filter. Disconnect or non-disconnect mountings available.	PL 36-624	PL 36-633 DB 36-654 TCS 36-674 AD 36-664-A

Printed in U.S.A.





June, 1978
Supersedes Index 36-615,
dated February, 1977
Mailed to: E, D, C/2272/PL

Expulsion Power Fuse Index and Selection Guide

Type	Amps	Voltage, Kv	Interrupting Ratings (Sym.)		Application	Catalog Data Publication No.
			Amperes	3-Phase MVA		
Outdoor						
BA-200 BA-400	1/2-720E 1/2-400E	7.2-34.5 7.2-34.5	6,300-17,500 12,500-25,000	145-376 208-746	Obsolete fuse, replaced by the RBA and RDB. Only refills and fuseholders are available. See SNI-36-630 for superseded styles.	PL 36-791 AD 36-792
DBA-1 DBA-2 DBA-5	1/2-200E 1/2-200E 1/2-200E	7.2-69 34.5-69 34.5-69	2,500-6,300 10,000-12,500 5,000-8,000	26-300 746-1,200 470-600	Drop-out type, used for protection of transmission and sub-transmission power transformers, potential transformers, and distribution feeder circuit sectionalizing.	PL 36-621 DB 36-622 TCS 36-622A AD 36-623
DBS	15-200E 1K-200K	7.2-34.5 7.2-34.5	10,500-14,000 10,500-14,000	175-600 175-600	Dropout type, used for protection of power transformers, distribution transformers, potential transformers, station service transformers, distribution feeder circuit sectionalizing, dip pole application for underground circuits, where available system short circuit currents exceed conventional cutouts.	PL 36-641 DB 36-642 TCS 36-642A AD 36-643
RDB-200 RDB-400 RDB-800	10-200E 1/2-400E 1/2-720E	4.8-34.5 4.8-34.5 4.8-34.5	6,900-19,000 16,800-37,500 16,800-37,500	137-410 270-1,000 270-1,000	Refillable, drop-out type, used for protection of power transformers, street lighting transformers, high voltage capacitor banks, distribution transformers, potential transformers, distribution feeder circuits and underground distribution dip pole applications.	PL 36-631 DB 36-632 TCS 36-632A AD 36-635
Indoor						
BA-200 BA-400	1/2-200E 1/2-400E	7.2-34.5 7.2-34.5	6,300-17,500 12,500-25,000	145-376 208-746	Obsolete fuse, replaced by the RBA and RDB. Only fuseholders and refills are available. See SNI-36-630 for superseded styles.	PL 36-791 AD 36-792
RBA-200 RBA-400 RBA-800	10E-200E 1/2-400E 1/2-720E	4.8-34.5 4.8-34.5 4.8-34.5	6,900-19,000 16,800-37,500 16,800-37,500	137-410 270-1,000 270-1,000	Refillable type, used to protect unit or power centers, capacitor banks underground sectionalizing. General utility and industrial enclosed distribution protection areas. Use condenser or discharge filter. Disconnect or non-disconnect mountings available.	PL 36-633 DB 36-634 TCS 36-634A AD 36-635

