



INSTRUCTIONS

BREAKER OPERATING MECHANISM

For 30, 60 and 100 amp De-ion® switches and
2 and 3 Pole Type F Circuit Breakers

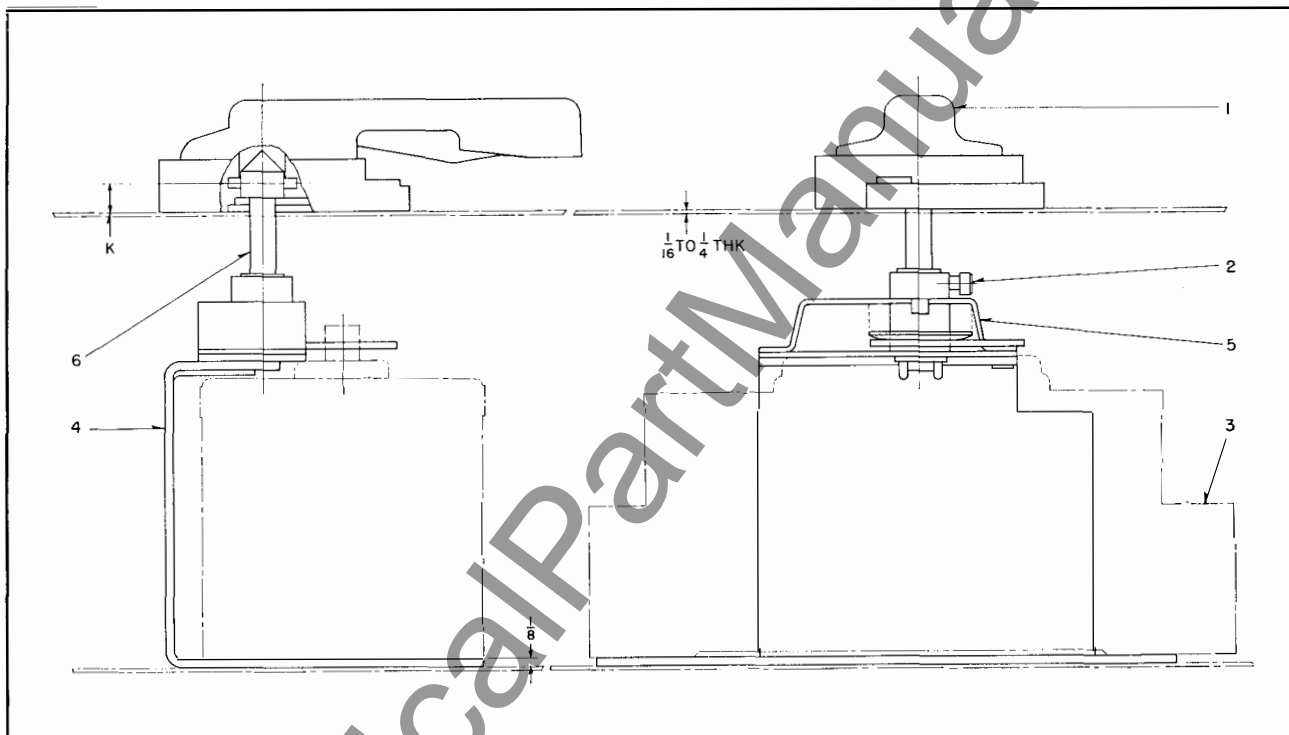


FIG. 1. Arrangement of Parts.

CABINET DRILLING

Drill cabinet for De-ion switch or circuit breaker as per Fig. 2.

ASSEMBLY

The following procedure is recommended for assembling the parts for the breaker operating mechanism. Numbers in parentheses refer to items in Fig. 1.

1. Assemble handle and hub mechanism (1) to cover using the three $\frac{1}{4}$ -20 pan head screws packed in cloth bag. Handle to be located in a horizontal plane with handle grip on right hand side.

2. Mount breaker or switch (3) in cabinet with mounting frame (4). Mounting hardware not sup-

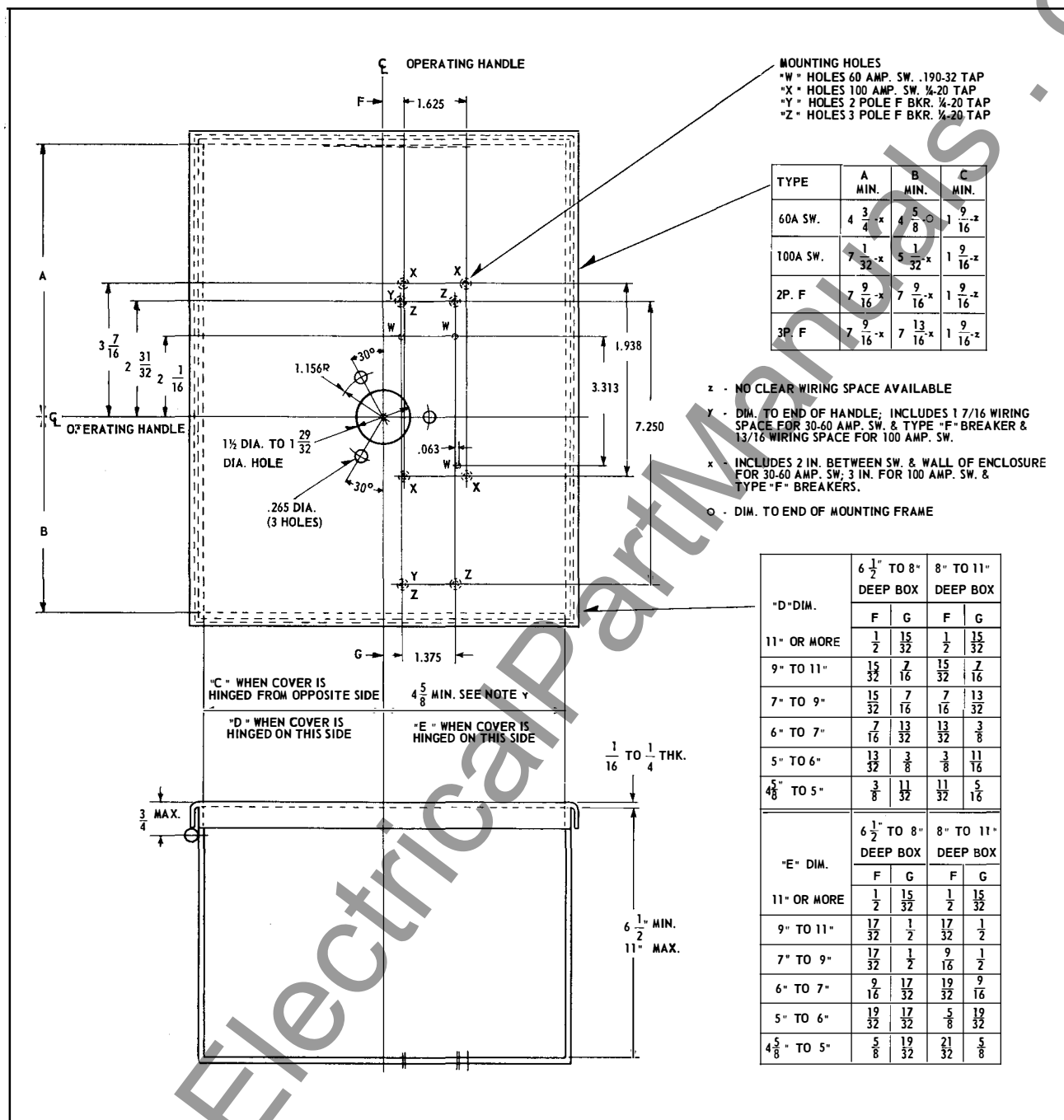
plied as part of assembly. See Fig. 2 for drilling plan. For outline dimensions of breaker or De-Ion switches, see dimension sheet 29-170, pages 6 and 16.

3. Assemble operating assembly (5) to frame (4) with the three .190-32 round head screws packed in cloth bag.

4. Determine length of shaft (6) as per Fig. 3 and cut off at groove provided. Set K as shown in Fig. 3 and lock shaft (6) with socket head screw (2).

5. Shaft may be used as center punch to locate hole in cover (Fig. 2). Calculate length as per Fig. 4 and cut off at this point disregarding minimum length and cutting instruction in Fig. 3. Screw shaft to position shown in Fig. 4 and center punch. Drill cover per Fig. 2 and relocate shaft as per Fig. 3.

BREAKER OPERATING MECHANISM



BREAKER OPERATING MECHANISM

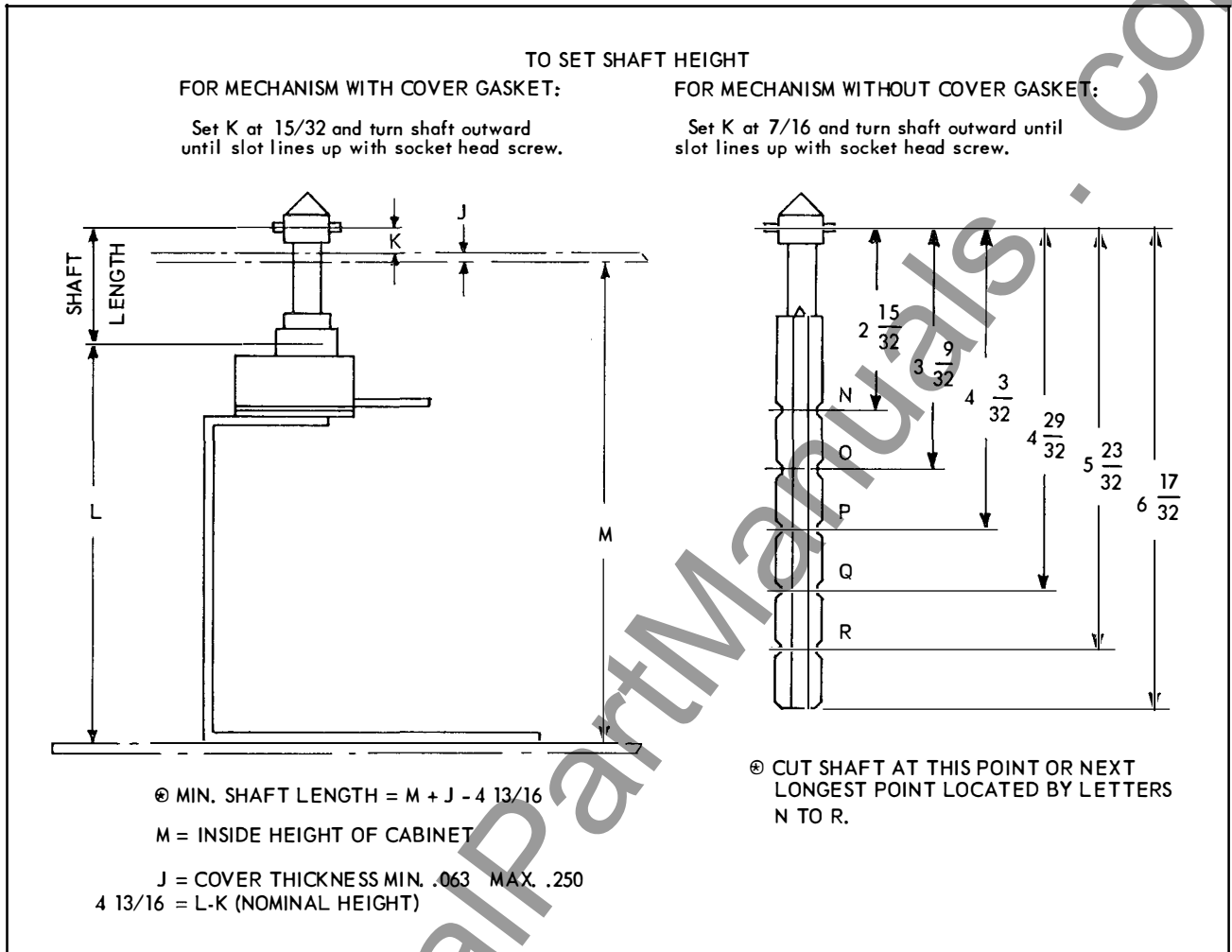


FIG. 3. Determining Length of Shaft

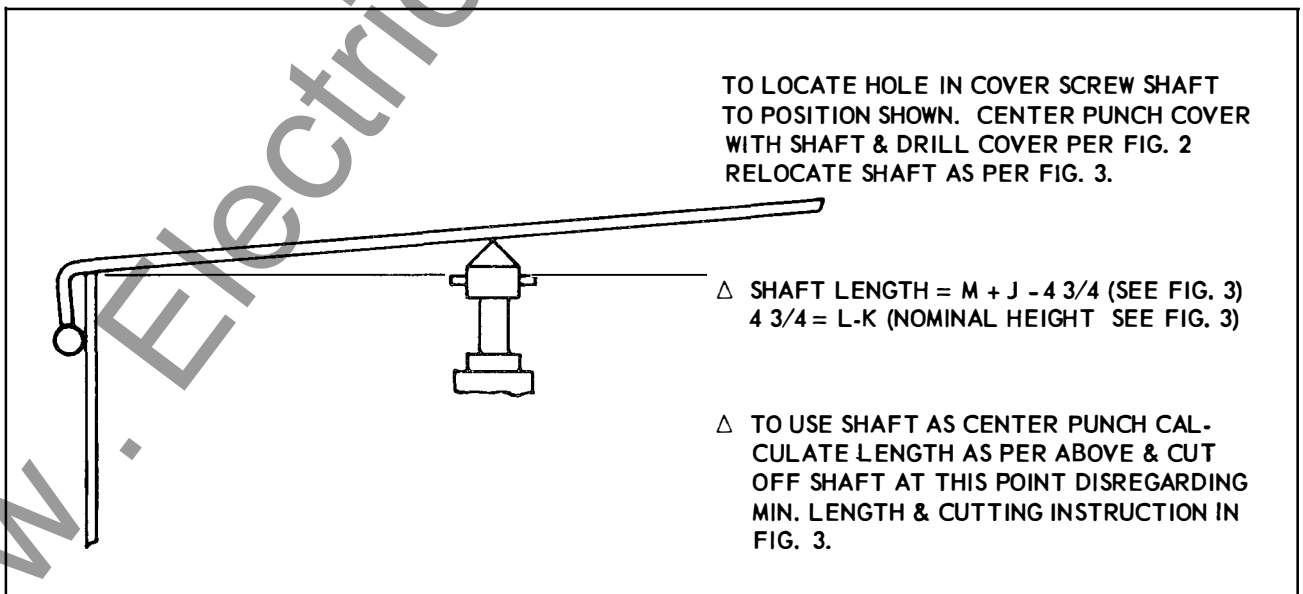


FIG. 4. Center Punching of Cover Using Shaft



WESTINGHOUSE ELECTRIC CORPORATION

BEAVER PLANT

STANDARD CONTROL DIVISION

BEAVER, PA.

Printed in U.S.A.