



PRODUCT NEWS

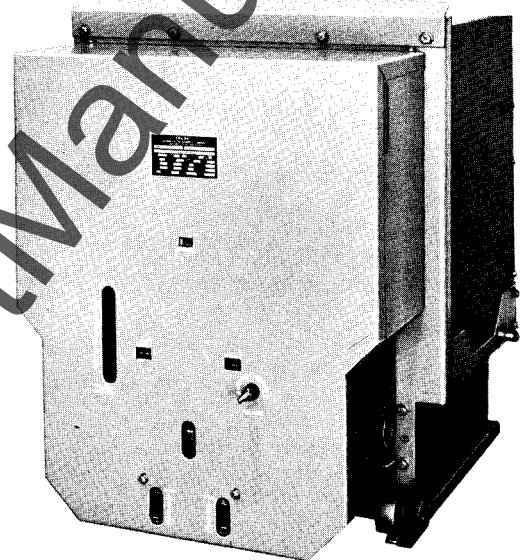
SQUARE D COMPANY

MIDDLETOWN HEADQUARTERS MARKETING DEPARTMENT

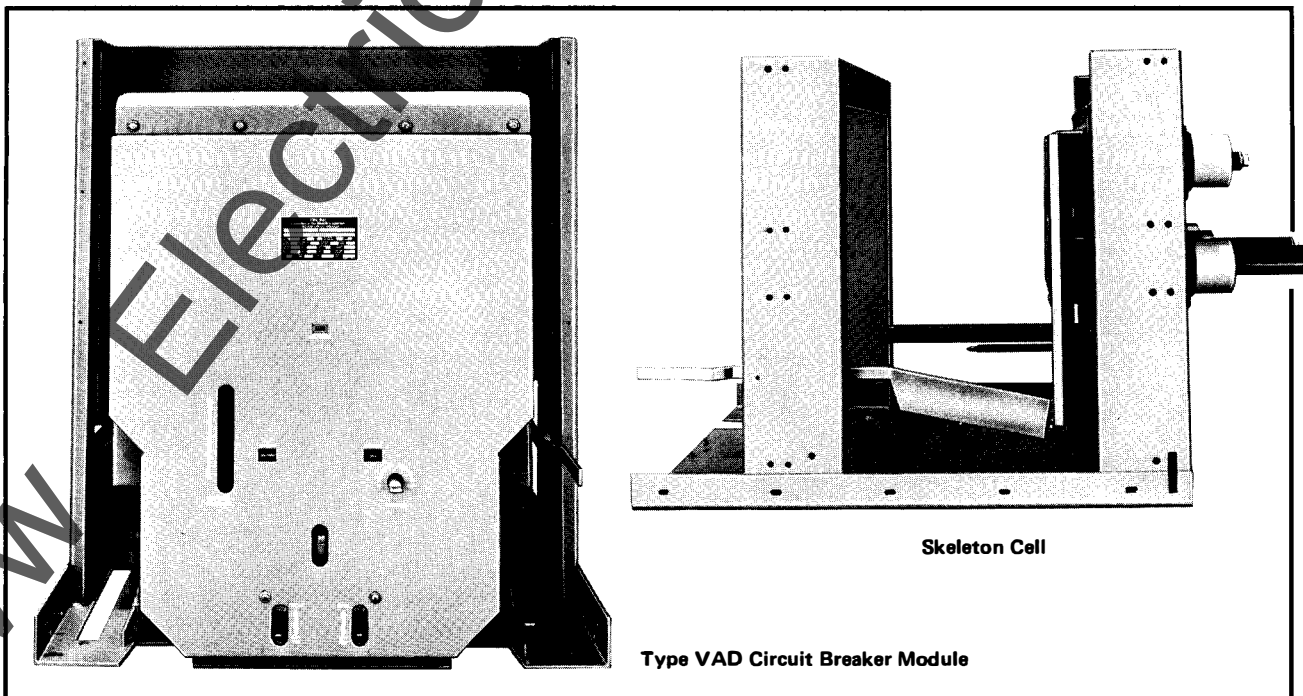
now available

VACARC™ Type VAD Vacuum Circuit Breaker Modules for Switchgear Assemblers

VACARC™ Type VAD Modules combine the vacuum principle of circuit interruption with horizontal drawout circuit breaker convenience plus rugged self-supporting one and two high skeleton cells to provide versatility in any switchgear assembly.



Type VAD
Circuit Breaker



Skeleton Cell

Type VAD Circuit Breaker Module

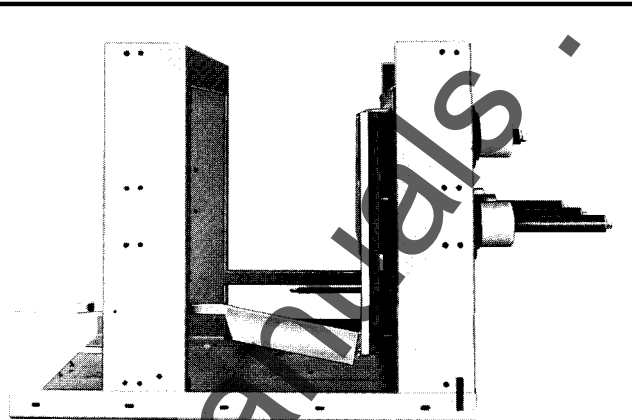
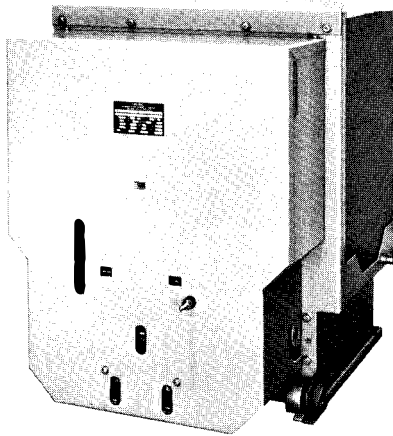
Continued →

VACARC Circuit Breaker Modules

Consider the Advantages of VAD Modules

TYPE VAD VACUUM CIRCUIT BREAKER

- High Speed Operation (3 cycle interruption).
- Long Life—Low Maintenance.
- Contacts Sealed Within Vacuum Interrupter.
- Horizontal Drawout Design.
- Stored Energy Operating Mechanism has low moving mass because of short distance contacts must travel.
- Operating Mechanism is easily accessed for inspection and servicing.



TYPE VSC SKELETON CELL

- Self-Supporting, Welded Steel Framework.
- Automatic Shutter—Provides operator safety.
- Guide Rails—Ensures proper breaker positioning.
- Main Interlock—Prevents insertion or removal of the breaker while in the closed position.
- Cell and Circuit Breaker Ground Bus are standard.
- Secondary Disconnect—Mates with disconnect block on circuit breaker for control connections.
- Bus Contacts—Allow for efficient connection of all bussing.
- Cells available in one high or two high construction.

With all these features, the VAD series of vacuum circuit breakers, combined with modular skeleton cells, is one of the most operationally advantageous and cost effective series of circuit breakers available. Its safe, quiet operation makes it suitable for application in any installation site. Its reduced size and weight provide easy handling and servicing. And its advanced reliable design, and low contact erosion guarantee a long operating life with low maintenance costs and requirements.

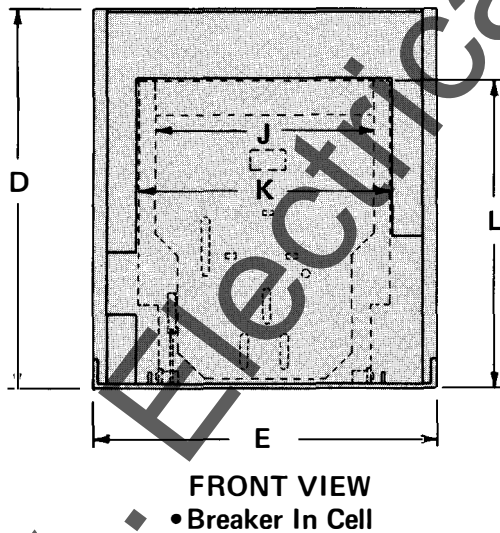
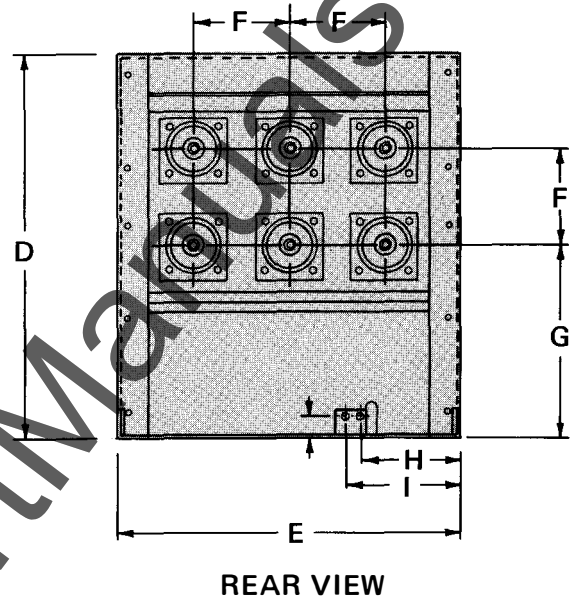
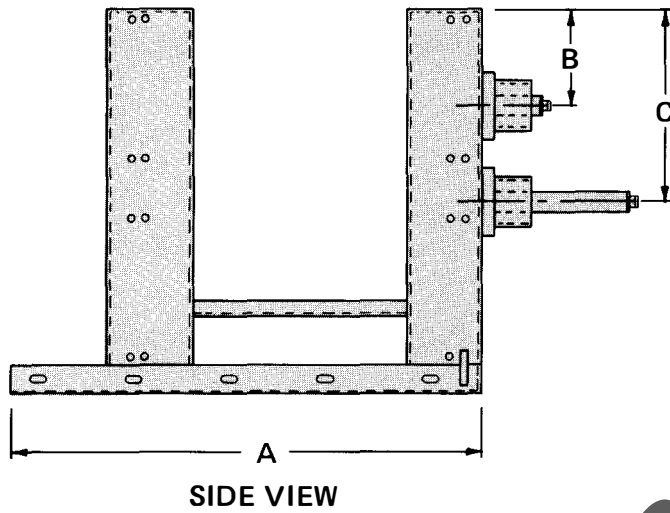
VAD Vacuum Circuit Breaker Ratings (Symmetrical Rating Basis ANSI C37.06)

Breaker Model Number	Nominal Rating		Voltage		Insulation Level Withstand		Current		Rated Values		Related Required Capabilities			
	Voltage Class	3-Phase MVA Class	Rated Max. Voltage	Rated Voltage Range Factor K	Low Frequency	Impulse	Rated Continuous Current at 60 Hz.	Rated Short Circuit Current (at Max. kV)	Rated Max. Interrupting Time Cycles	Rated Permissible Tripping Delay	Rated Max. Voltage Divided by K	Current Values		
												Max. Symmetrical Interrupting Capability	3-Second Current Carrying Capability	Closing and Latching Capability
kV rms	MVA	kV rms		kV rms	kV crest	Amp. rms	kA rms	sec.	kV rms	kA rms	kA rms	kA rms		
VAD-05025-12	4.16	250	4.76	1.24	19	60	1200	29	3	2	3.85	36	36	58
VAD-05025-20	4.16	250	4.76	1.24	19	60	2000	29	3	2	3.85	36	36	58
*VAD-08035-12	7.20	350	8.25	1.25	36	95	1200	33	3	2	6.60	36	36	58
*VAD-08035-20	7.20	350	8.25	1.25	36	95	2000	33	3	2	6.60	36	36	58
VAD-15050-12	13.80	500	15.00	1.30	36	95	1200	18	3	2	11.50	23	23	37
VAD-15050-20	13.80	500	15.00	1.30	36	95	2000	18	3	2	11.50	23	23	37
VAD-15075-12	13.80	750	15.00	1.30	36	95	1200	28	3	2	11.50	36	36	58
VAD-15075-20	13.80	750	15.00	1.30	36	95	2000	28	3	2	11.50	36	36	58

*Not standard ratings per C37.06.

VACARC Circuit Breaker Dimensions

One High Cell Construction



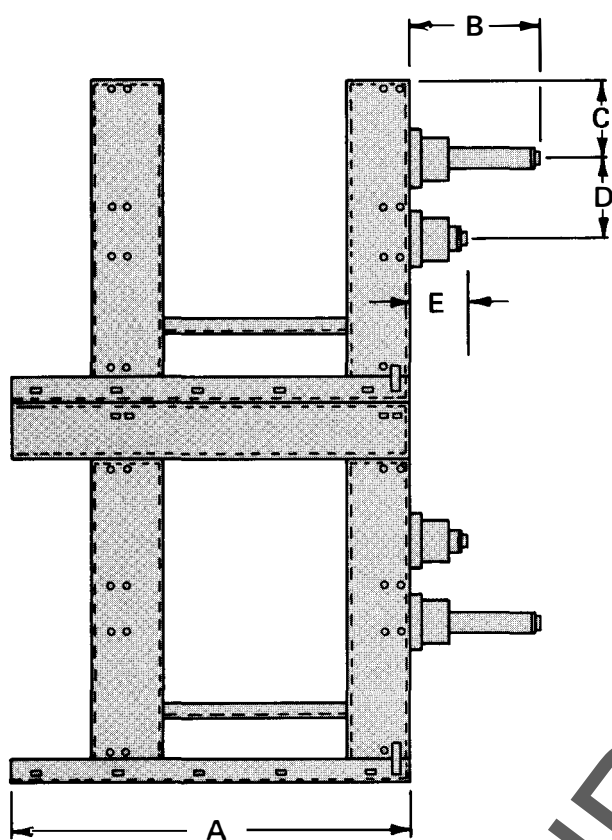
5 and 15kV Vacuum Breaker and cell. Dimensions typical for all ratings.	
A	49.31
B	10.06
C	20.06
D	40.00
E	35.75
F	10.00
G	19.94
H	10.50
I	12.00
J	26.00
K	28.75
L	37.00

Not For Construction
 All Dimensions In Inches

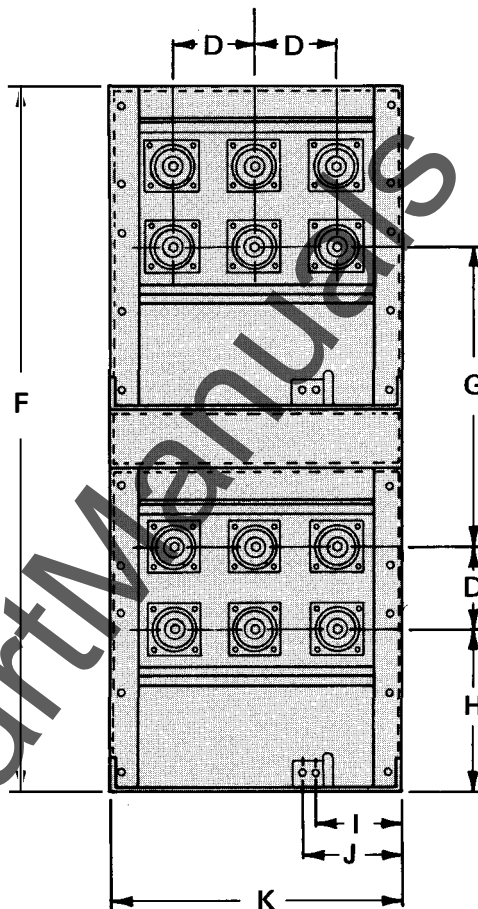
WWW

VACARC Circuit Breaker Dimensions

Two High Cell Construction

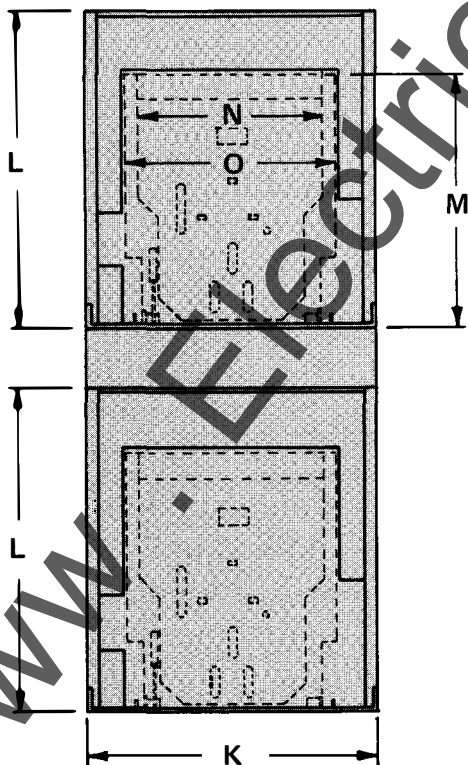


SIDE VIEW



REAR VIEW

Not For Construction
 All Dimensions In Inches



FRONT VIEW
 • Breaker In Cell

5 and 15kV Vacuum Breaker and cell. Dimensions typical for all ratings.

A	49.31
B	15.56
C	10.06
D	10.00
E	6.18
F	87.00
G	37.00
H	19.94
I	10.50
J	12.00
K	35.75
L	40.00
M	37.00
N	26.00
O	28.75



FOR FURTHER INFORMATION –
 Consult your local Square D field office, or write Square D
 Company, P.O. Box 558, Middletown, Ohio 45042.