

I-LINE[®]

Circuit Breaker Panelboards

CONTENTS

Description	Class	Pages
Application Data	2110	2-9
Dimensions	2110	10-20



SQUARE D COMPANY
Dedicated to Growth • Committed to Quality

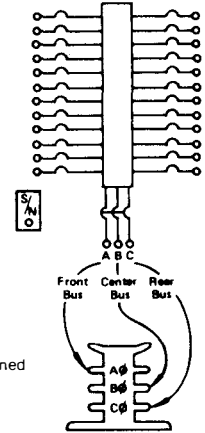
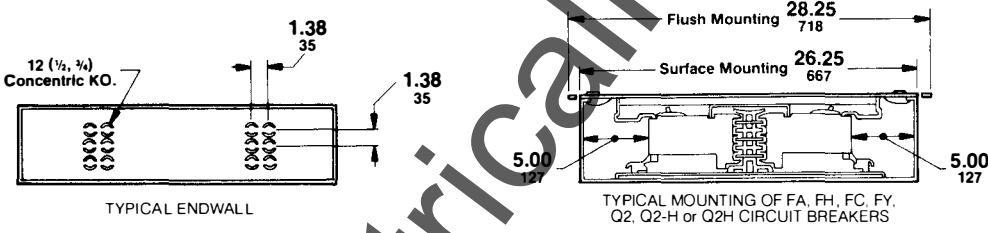
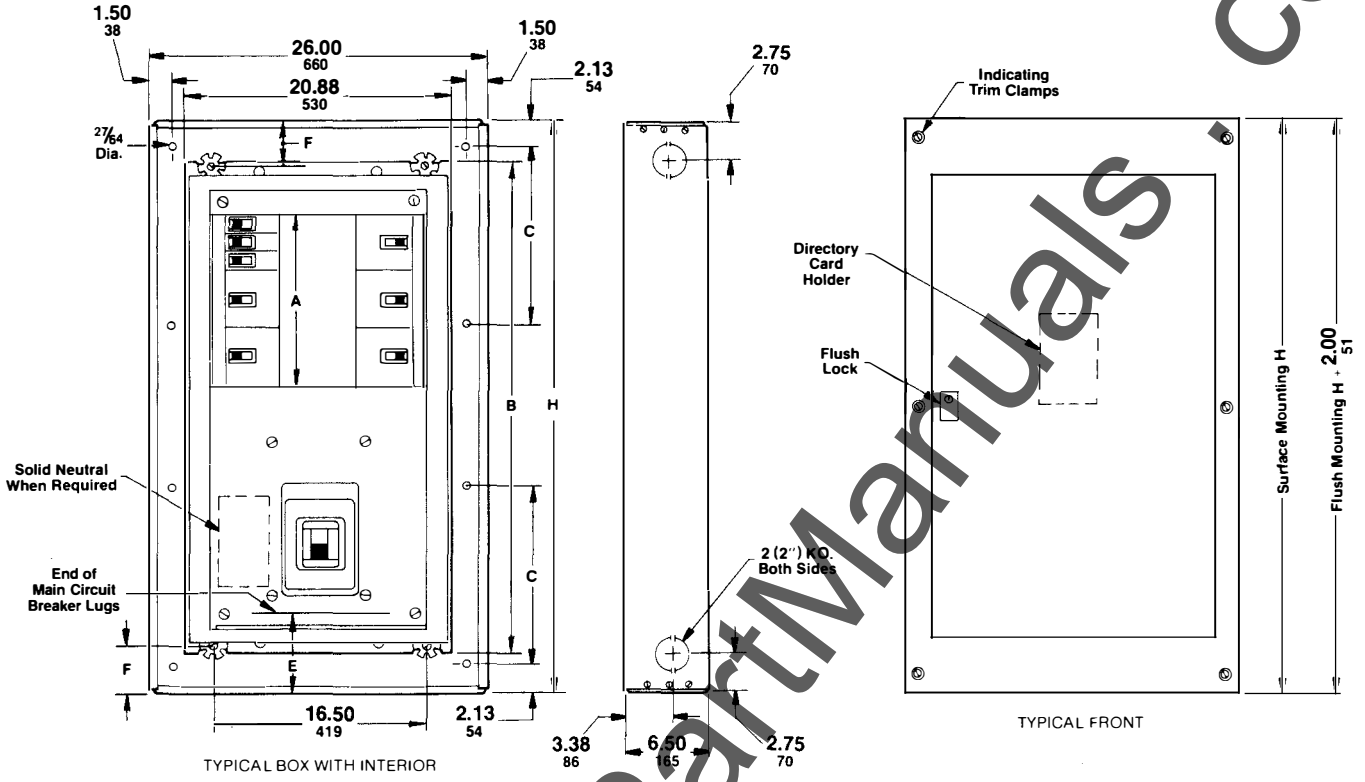
www.ElectricalPartsmaterials.com

I-LINE[®] CIRCUIT BREAKER PANELBOARDS

TYPE HCN—225 AMPERE MAXIMUM MAIN CIRCUIT BREAKER

DIMENSIONS

CLASS
2110



Branch connection phasing is determined by circuit breaker selection.

TYPICAL WIRING DIAGRAM

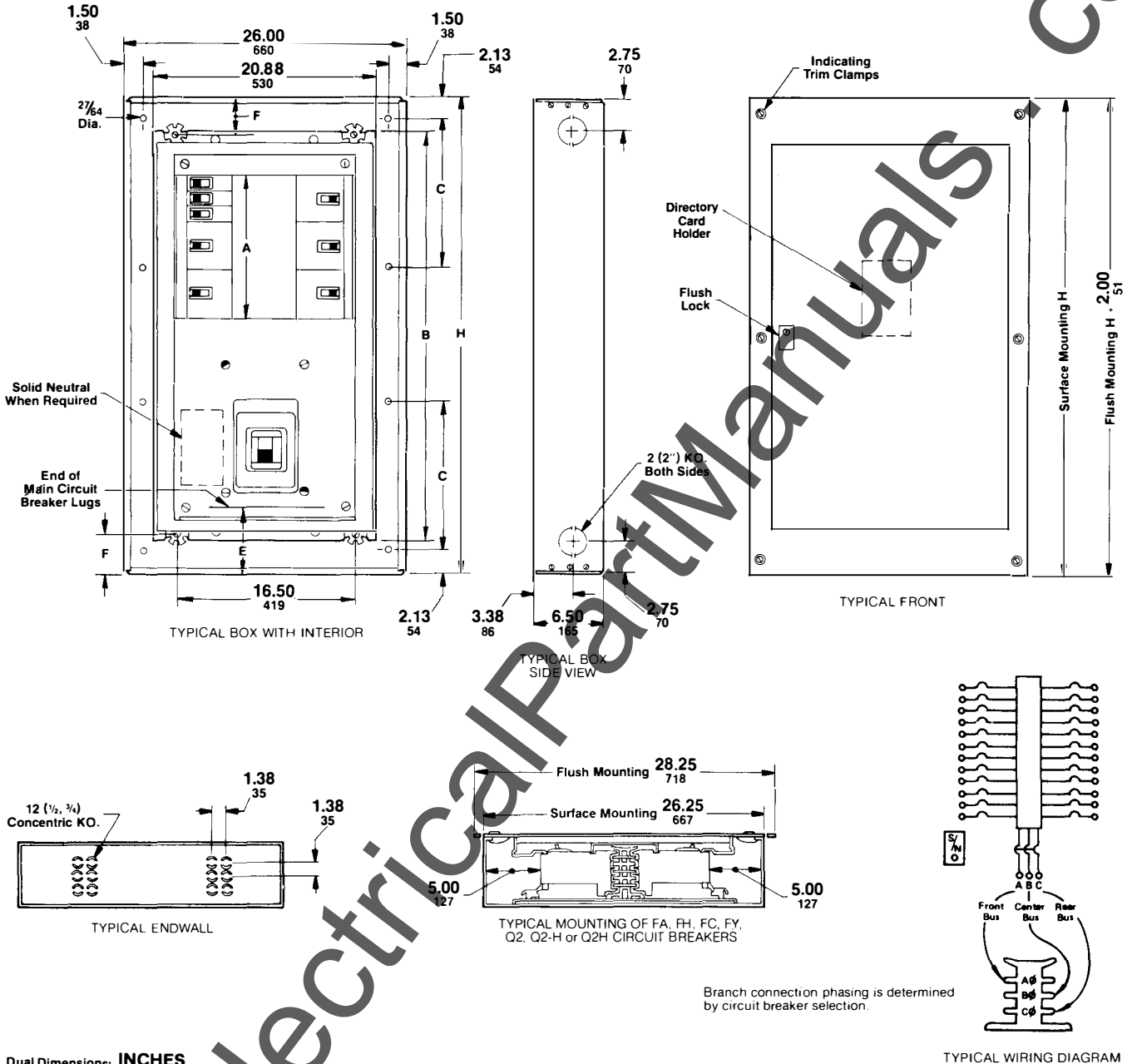
Dual Dimensions: **INCHES**
Millimeters

Catalog Number			Main Breaker Amp. Rating	H		A		B		C		E		F		Number of Mounting Holes
Interior	Box	Front		IN	mm	IN	mm	IN	mm	IN	mm	IN	mm	IN	mm	
HCN0952-1MN	HC2652B	HC2652T (F or S)	100	52.00	1321	9.00	229	29.50	749	23.85	606	5.50	140	11.50	292	6
HCN1865-1MN	HC2665B	HC2665T (F or S)	100	65.00	1651	18.00	457	38.50	978	30.35	771	5.50	140	13.50	343	6
HCN2774-1MN	HC2674B	HC2674T (F or S)	100	74.00	1880	27.00	686	47.50	1207	23.20	589	5.50	140	13.50	343	8
HCN0952-2MN	HC2652B	HC2652T (F or S)	225	52.00	1321	9.00	229	29.50	749	23.85	606	10.00	254	11.50	292	6
HCN1865-2MN	HC2665B	HC2665T (F or S)	225	65.00	1651	18.00	457	38.50	978	30.35	771	10.00	254	13.50	343	6
HCN2774-2MN	HC2674B	HC2674T (F or S)	225	74.00	1880	27.00	686	47.50	1207	23.20	589	10.00	254	13.50	343	8
HCN3283-2MN	HC2683B	• HC2683T (F or S)	225	83.00	2108	31.50	800	56.50	1435	26.20	666	10.00	254	13.50	343	8
HCN4592-2MN	HC2692B	• HC2692T (F or S)	225	92.00	2337	45.00	1143	65.50	1664	29.20	742	10.00	254	13.50	343	8

• Flush lock with 3-point latching.

I-LINE®
CIRCUIT BREAKER PANELBOARDS
TYPE HCN—400 AMPERE MAXIMUM MAIN CIRCUIT BREAKER
DIMENSIONS

www.ElectricalPartManuals.com



Dual Dimensions: **INCHES**
Millimeters

Catalog Number			Main Breaker Amp. Rating	H		A		B		C		E		F		Number of Mounting Holes
Interior	Box	Front		IN	mm	IN	mm	IN	mm	IN	mm	IN	mm	IN	mm	
HCN1465-4M	HC2665B	HC2665T (F or S)	400	65.00	1651	13.50	343	38.50	978	30.35	771	15.00	381	13.50	343	6
HCN2374-4M	HC2674B	HC2674T (F or S)	400	74.00	1880	22.50	572	47.50	1207	23.20	589	15.00	381	13.50	343	8
HCN3283-4M	HC2683B	• HC2683T (F or S)	400	83.00	2108	31.50	800	56.50	1435	26.20	666	15.00	381	13.50	343	8
HCN4192-4M	HC2692B	• HC2692T (F or S)	400	92.00	2337	40.50	1029	65.50	1664	29.20	742	15.00	381	13.50	343	8

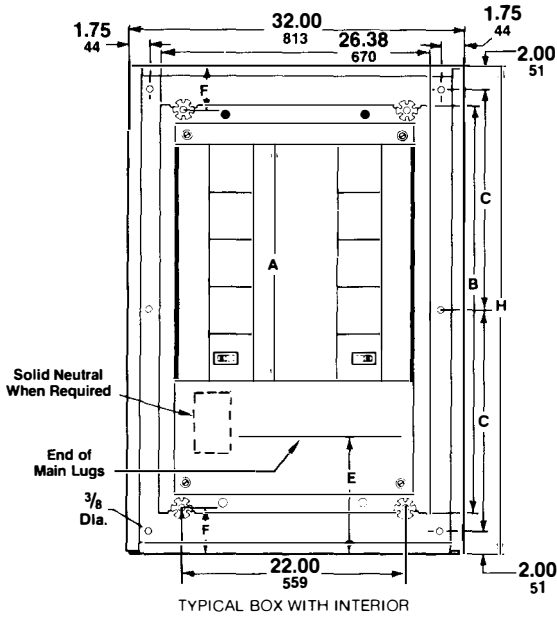
• Flush lock with 3-point latching



I-LINE® CIRCUIT BREAKER PANELBOARDS TYPE HCM—800 AMPERE MAXIMUM MAIN LUGS

CLASS
2110

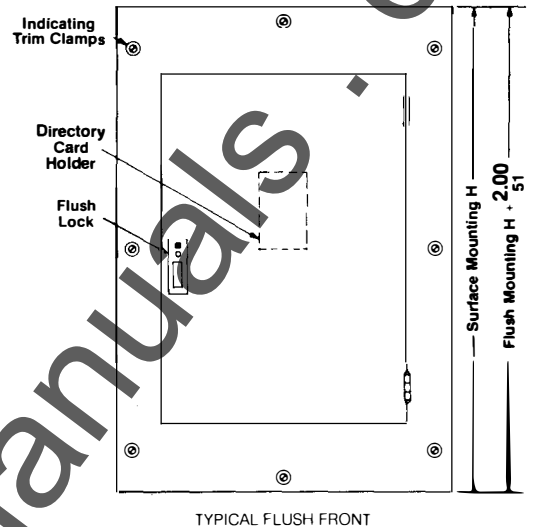
DIMENSIONS



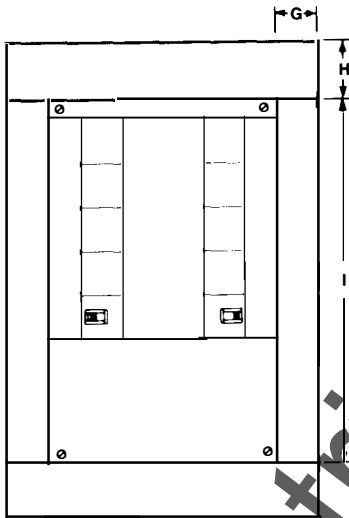
TYPICAL BOX WITH INTERIOR



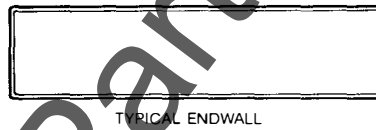
TYPICAL BOX SIDE VIEW



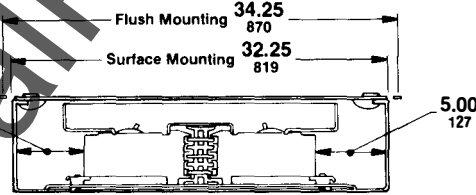
TYPICAL FLUSH FRONT



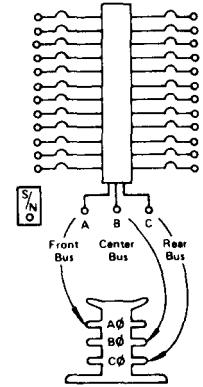
TYPICAL SURFACE FRONT
(4 PIECE TRIM-NO DOOR)



TYPICAL ENDWALL



TYPICAL MOUNTING OF FA, FH, FC, FY, IF, KA, KH,
Q2, Q2-H or Q2H CIRCUIT BREAKERS



TYPICAL WIRING DIAGRAM

Branch connection phasing is determined by circuit breaker selection.

Dual Dimensions: **INCHES**
Millimeters

Catalog Number				Main Lugs Ampere Rating	H		A		B		C		E		F		G		H		I		Number of Mounting Holes
Interior	Box	Surface Front	Flush Front		IN	mm	IN	mm	IN	mm	IN	mm	IN	mm	IN	mm	IN	mm	IN	mm	IN	mm	
HCM1448-2N	HC3248B	HC48S ▲	HC3248TF	225	48.00	1219	13.50	343	30.00	762	21.85	555	10.00	254	9.30	236	4.75	121	10.25	260	27.40	696	6
HCM2364-2N	HC3264B	HC64S ▲	HC3264TF	225	64.00	1626	22.50	572	39.00	991	29.85	758	10.00	254	12.80	325	4.75	121	13.75	260	36.40	925	6
HCM3273-2N	HC3273B	HC73S ▲	HC3273TF	225	73.00	1854	31.50	800	48.00	1219	22.90	582	10.00	254	12.80	325	4.75	121	13.75	260	45.40	1153	8
HCM5091-2N	HC3291B	HC91S ▲	HC3291TF	225	91.00	2311	49.50	1257	66.00	1676	28.90	734	10.00	254	12.80	325	4.75	121	13.75	260	63.40	1610	8
HCM1448-4	HC3248B	HC48S ▲	HC3248TF	400	48.00	1219	13.50	343	30.00	762	21.85	555	15.00	381	9.30	236	4.75	121	10.25	260	27.40	696	6
HCM2364-4	HC3264B	HC64S ▲	HC3264TF	400	64.00	1626	22.50	572	39.00	991	29.85	758	15.00	381	12.80	325	4.75	121	13.75	260	36.40	925	6
HCM3273-4	HC3273B	HC73S ▲	HC3273TF	400	73.00	1854	31.50	800	48.00	1219	22.90	582	15.00	381	12.80	325	4.75	121	13.75	260	45.40	1153	8
HCM5091-4	HC3291B	HC91S ▲	HC3291TF	400	91.00	2311	49.50	1257	66.00	1676	28.90	734	15.00	381	12.80	325	4.75	121	13.75	260	63.40	1610	8
HCM1448-6	HC3248B	HC48S ▲	HC3248TF	600	48.00	1219	13.50	343	30.00	762	21.85	555	14.00	356	9.30	236	4.75	121	10.25	260	27.40	696	6
HCM2364-6	HC3264B	HC64S ▲	HC3264TF	600	64.00	1626	22.50	572	39.00	991	29.85	758	14.00	356	12.80	325	4.75	121	13.75	260	36.40	925	6
HCM3273-6	HC3273B	HC73S ▲	HC3273TF	600	73.00	1854	31.50	800	48.00	1219	22.90	582	14.00	356	12.80	325	4.75	121	13.75	260	45.40	1153	8
HCM5091-6	HC3291B	HC91S ▲	HC3291TF	600	91.00	2311	49.50	1257	66.00	1676	28.90	734	14.00	356	12.80	325	4.75	121	13.75	260	63.40	1610	8
HCM1448-8	HC3248B	HC48S ▲	HC3248TF	800	48.00	1219	13.50	343	30.00	762	21.85	555	15.00	381	9.30	236	4.75	121	10.25	260	27.40	696	6
HCM2364-8	HC3264B	HC64S ▲	HC3264TF	800	64.00	1626	22.50	572	39.00	991	29.85	758	15.00	381	12.80	325	4.75	121	13.75	260	36.40	925	6
HCM3273-8	HC3273B	HC73S ▲	HC3273TF	800	73.00	1854	31.50	800	48.00	1219	22.90	582	15.00	381	12.80	325	4.75	121	13.75	260	45.40	1153	8
HCM5091-8	HC3291B	HC91S ▲	HC3291TF	800	91.00	2311	49.50	1257	66.00	1676	28.90	734	15.00	381	12.80	325	4.75	121	13.75	260	63.40	1610	8

• Flush lock with 3-point latching.

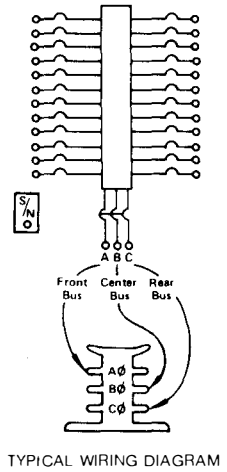
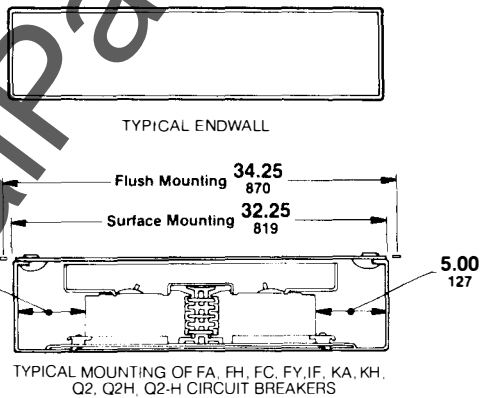
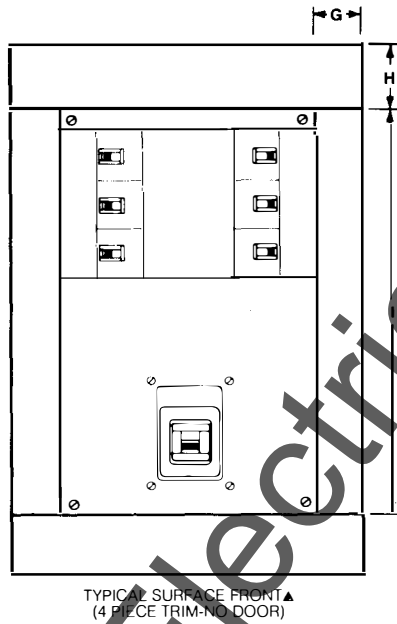
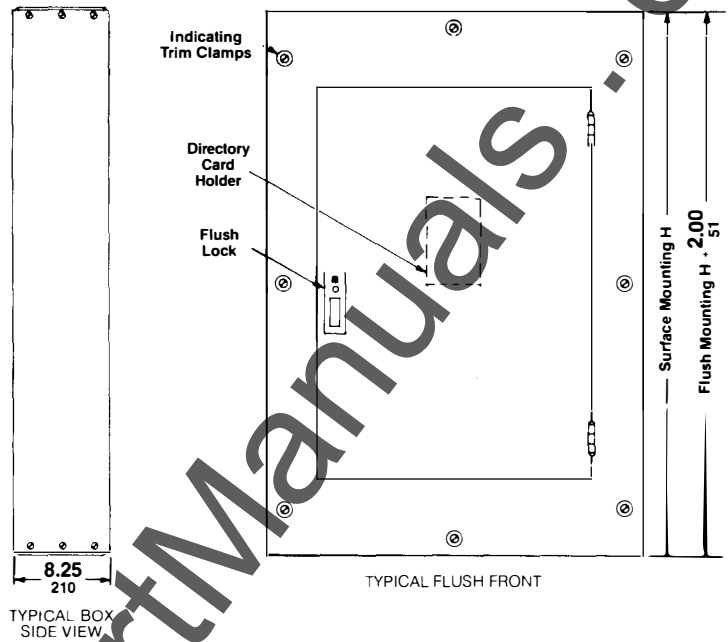
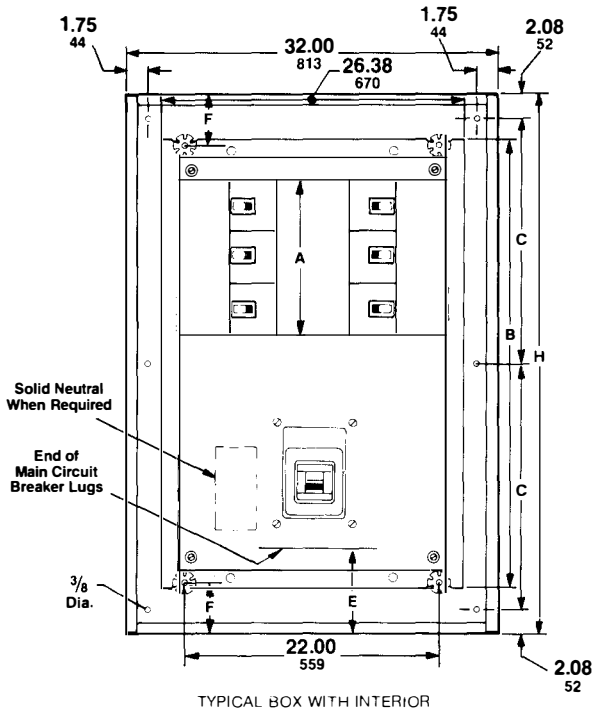
▲ Surface fronts for Type HCM panels are 4-piece construction without door. If a door is required, change flush catalog number suffix from F to S. See typical flush front for dimensions.

I-LINE®

CIRCUIT BREAKER PANELBOARDS

TYPE HCM—400 AMPERE MAXIMUM MAIN CIRCUIT BREAKER

DIMENSIONS



Branch connection on phasing is determined by circuit breaker selection.

Dual Dimensions: **INCHES**
Millimeters

Catalog Number		Main Breaker Amp Rating	H		A		B		C		E		F		G		H		I		Number of Mounting Holes		
Interior	Box		IN	mm	IN	mm	IN	mm	IN	mm	IN	mm	IN	mm	IN	mm	IN	mm	IN	mm			
HCM1864-2MN	HC3264B	HC64S ▲	HC3264TF	225	64.00	1626	18.00	457	39.00	991	29.85	758	10.00	254	12.80	325	4.75	121	13.75	348	36.40	925	6
HCM2773-2MN	HC3273B	HC73S ▲	HC3273TF	225	73.00	1854	27.00	686	48.00	1219	22.90	582	10.00	254	12.80	325	4.75	121	13.75	348	45.40	1153	8
HCM1464-4M	HC3264B	HC64S ▲	HC3264TF	400	64.00	1626	13.50	343	39.00	991	29.85	758	15.00	381	12.80	325	4.75	121	13.75	348	36.40	925	6
HCM2373-4M	HC3273B	HC73S ▲	HC3273TF	400	73.00	1854	22.50	572	48.00	1219	22.90	582	15.00	381	12.80	325	4.75	121	13.75	348	45.40	1153	8
HCM4191-4M	HC3291B	HC91S ▲	HC3291TF	400	91.00	2311	40.50	1029	66.00	1676	28.90	734	15.00	381	12.80	325	4.75	121	13.75	348	63.40	1610	8

▲ Flush lock with 3-point latching.

▲ Surface fronts for Type HCM panels are 4-piece construction without door. If a door is required, change flush catalog number suffix from F to S. See typical flush front for dimensions.



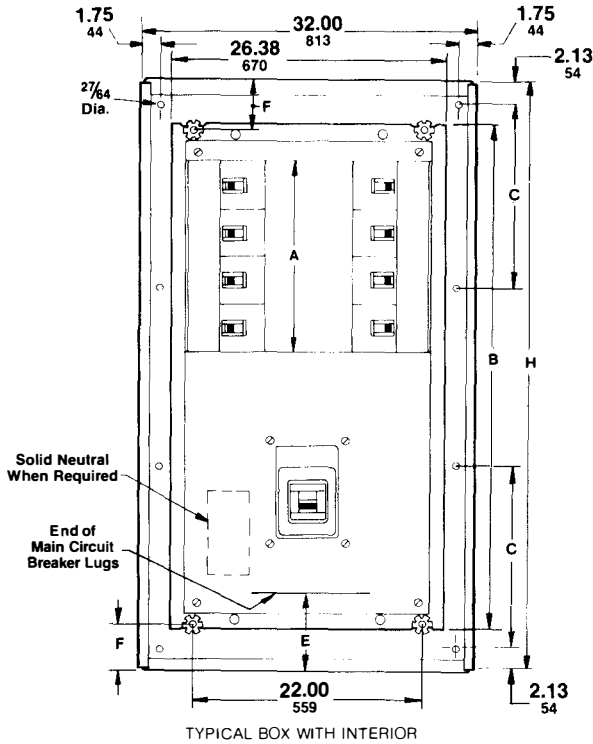
I-LINE®

CIRCUIT BREAKER PANELBOARDS

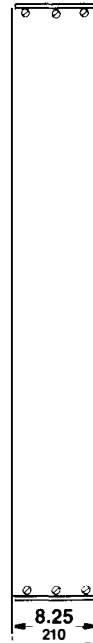
TYPE HCM—800 AMPERE MAXIMUM MAIN CIRCUIT BREAKER

DIMENSIONS

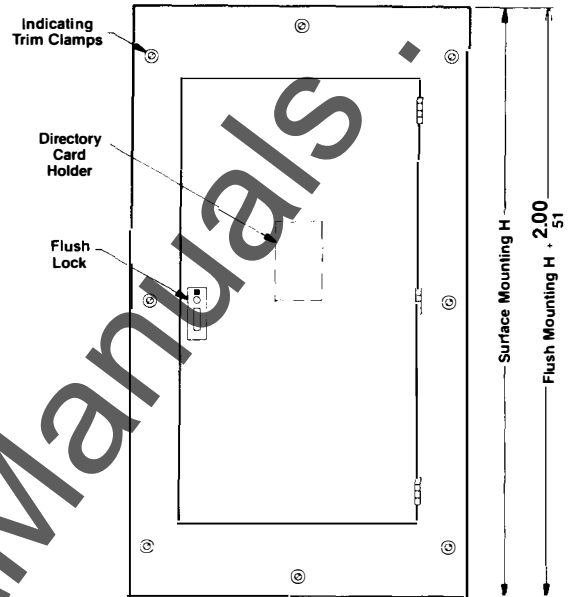
CLASS
2110



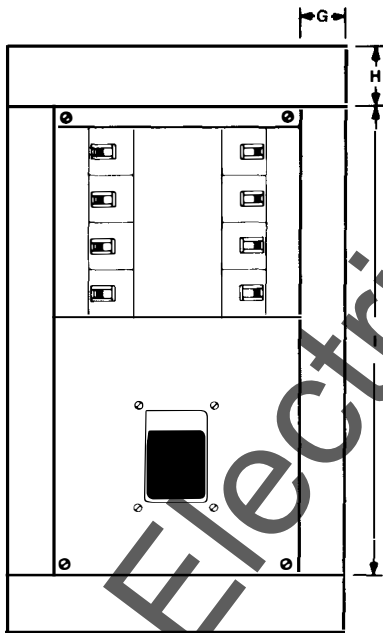
TYPICAL BOX WITH INTERIOR



TYPICAL BOX SIDE VIEW



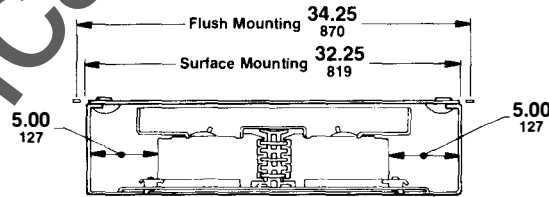
TYPICAL FLUSH FRONT



TYPICAL SURFACE FRONT▲
(4 PIECE TRIM-NO DOOR)

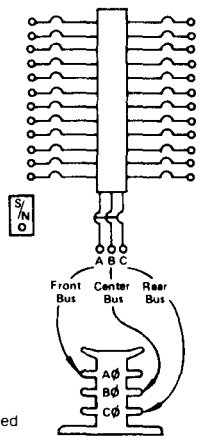


TYPICAL ENDWALL



TYPICAL MOUNTING OF FA, FH, FC, FY, KA, KH, IF, Q2, Q2-H or Q2H CIRCUIT BREAKERS

Branch connection phasing is determined by circuit breaker selection.



TYPICAL WIRING DIAGRAM

Dual Dimensions: **INCHES**
Millimeters

Catalog Number				Main Breaker Amp. Rating	H		A		B		C		E		F		G		H		I		Number of Mounting Holes
Interior	Box	Surface Front	Flush Front		IN	mm	IN	mm	IN	mm	IN	mm	IN	mm	IN	mm	IN	mm	IN	mm	IN	mm	
HCM1873-6M	HC3273B	HC73S ▲	HC3273TF	600	73.00	1854	18.00	457	48.00	1219	22.90	582	14.00	356	12.80	325	4.75	121	13.75	348	45.40	1153	8
HCM3691-6M	HC3291B	HC91S ▲	• HC3291TF	600	91.00	2311	36.00	914	66.00	1676	28.90	734	14.00	356	12.80	325	4.75	121	13.75	348	63.40	1610	8
HCM1873-8M	HC3273B	HC73S ▲	HC3273TF	800	73.00	1854	18.00	457	48.00	1219	22.90	582	15.00	381	12.80	325	4.75	121	13.75	348	45.40	1153	8
HCM3691-8M	HC3291B	HC91S ▲	• HC3291TF	800	91.00	2311	36.00	914	66.00	1676	28.90	734	15.00	381	12.80	325	4.75	121	13.75	348	63.40	1610	8

▲ Flush lock with 3-point latching.

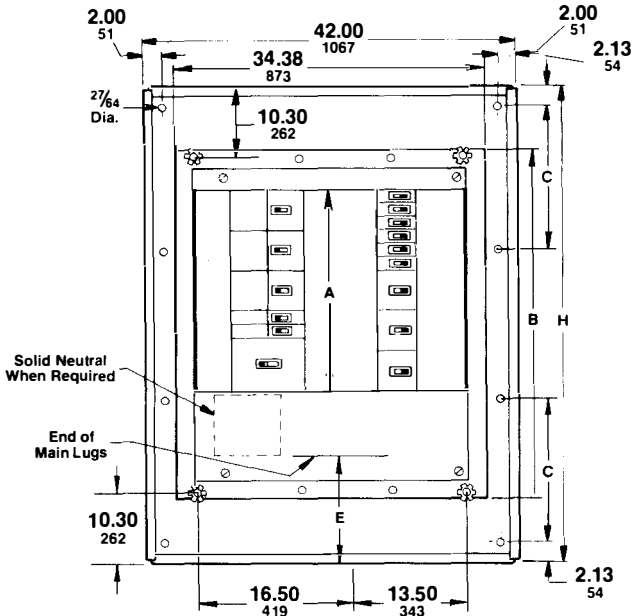
▲ Surface fronts for Type HCM panels are 4-piece construction without door. If a door is required, change flush catalog number suffix from F to S. See typical flush front for dimensions.

I-LINE®

CIRCUIT BREAKER PANELBOARDS

TYPE HCW—800 AMPERE MAXIMUM MAIN LUGS

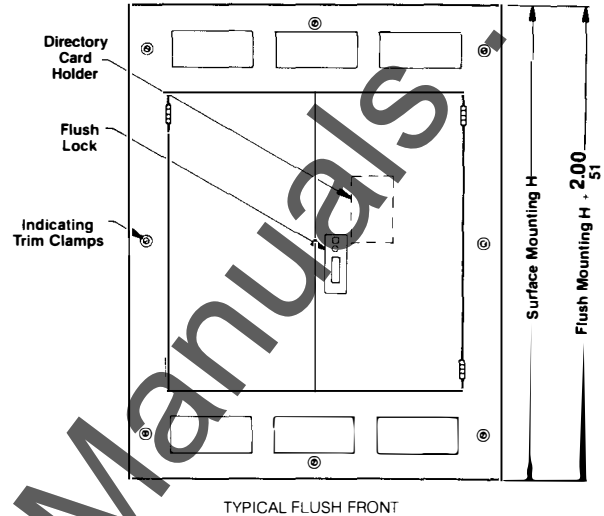
DIMENSIONS



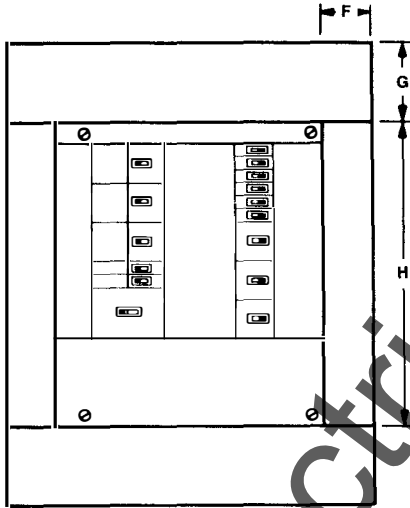
TYPICAL BOX WITH INTERIOR



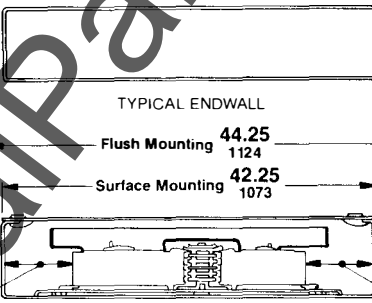
TYPICAL BOX SIDE VIEW



TYPICAL FLUSH FRONT

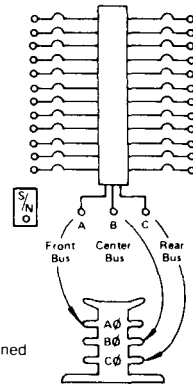


TYPICAL SURFACE FRONT
(4 PIECE TRIM-NO DOOR)



TYPICAL MOUNTING OF FA, FH, FC, FY, Q2, Q2-H, Q2H, IF, KA, KH, KC, IK, Q4, LA, LH or IL CIRCUIT BREAKERS

Branch connection phasing is determined by circuit breaker selection.



TYPICAL WIRING DIAGRAM

Dual Dimensions: **INCHES**
Millimeters

Catalog Number				Main Lugs Ampere Rating	H		A		B		C		E		F		G		H		Number of Mounting Holes
Interior	Box	Surface Front	Flush Front		IN	mm	IN	mm	IN	mm	IN	mm	IN	mm	IN	mm	IN	mm	IN	mm	
HCW1450-4	HC42500B	HC60S	HC4250TF	400	50.00	1270	13.50	343	30.00	762	22.85	580	15.00	381	4.25	121	11.25	286	27.40	696	6
HCW2359-4	HC42590B	HC68S	HC4259TF	400	59.00	1499	22.50	572	39.00	991	27.35	695	15.00	381	4.25	121	11.25	286	36.40	925	6
HCW3268-4	HC42680B	HC68S	HC4268TF	400	68.00	1727	31.50	800	48.00	1219	31.85	809	15.00	381	4.25	121	11.25	286	45.40	1153	6
HCW5086-4	HC42860B	HC86S	HC4286TF	400	86.00	2184	49.50	1257	66.00	1676	27.23	692	15.00	381	4.25	121	11.25	286	63.40	1610	8
HCW1450-6	HC42500B	HC50S	HC4250TF	600	50.00	1270	13.50	343	30.00	762	22.85	580	14.00	356	4.25	121	11.25	286	27.40	696	6
HCW2359-6	HC42590B	HC59S	HC4259TF	600	59.00	1499	22.50	572	39.00	991	27.35	695	14.00	356	4.25	121	11.25	286	36.40	925	6
HCW3268-6	HC42680B	HC68S	HC4268TF	600	68.00	1727	31.50	800	48.00	1219	31.85	809	14.00	356	4.25	121	11.25	286	45.40	1153	6
HCW5086-6	HC42860B	HC86S	HC4286TF	600	86.00	2184	49.50	1257	66.00	1676	27.23	692	14.00	356	4.25	121	11.25	286	63.40	1610	8
HCW1450-8	HC42800B	HC50S	HC4250TF	800	50.00	1270	13.50	343	30.00	762	22.85	580	15.00	381	4.25	121	11.25	286	27.40	696	6
HCW2359-8	HC42590B	HC59S	HC4259TF	800	59.00	1499	22.50	572	39.00	991	27.35	695	15.00	381	4.25	121	11.25	286	36.40	925	6
HCW3268-8	HC42680B	HC68S	HC4268TF	800	68.00	1727	31.50	800	48.00	1219	31.85	809	15.00	381	4.25	121	11.25	286	45.40	1153	6
HCW5086-8	HC42860B	HC86S	HC4286TF	800	86.00	2184	49.50	1257	66.00	1676	27.23	692	15.00	381	4.25	121	11.25	286	63.40	1610	8

• Flush lock with 3-point latching

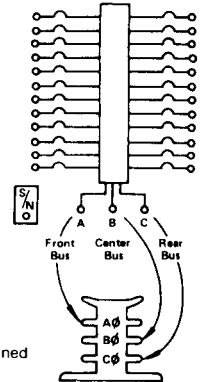
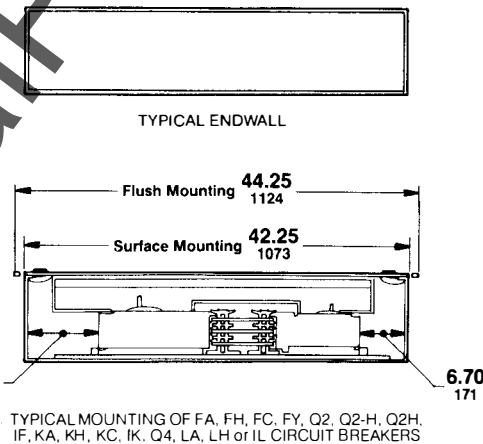
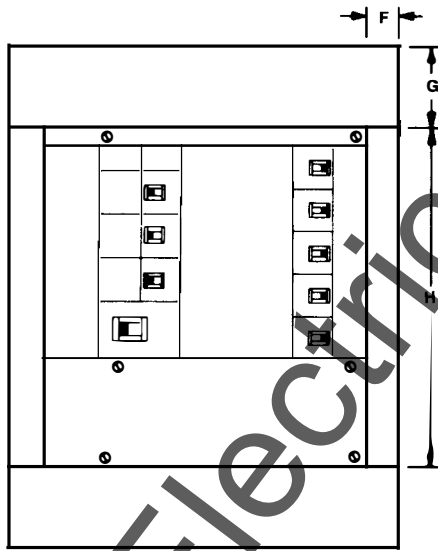
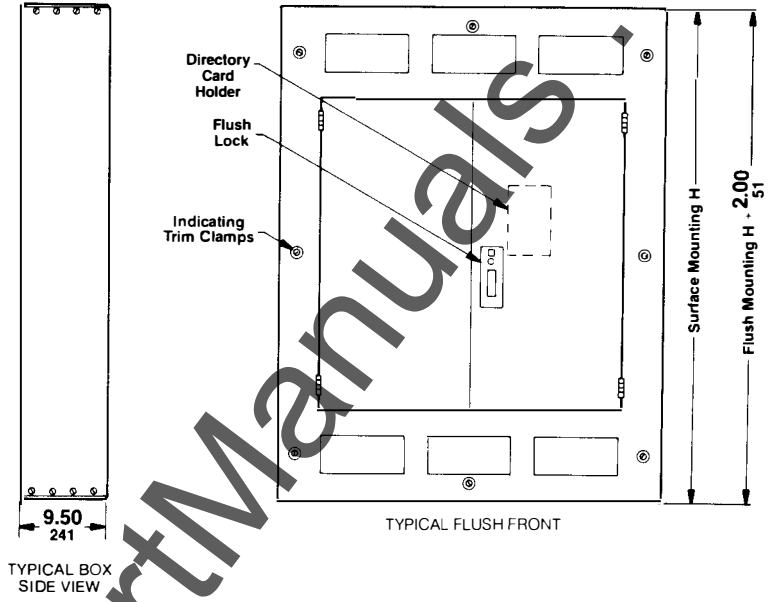
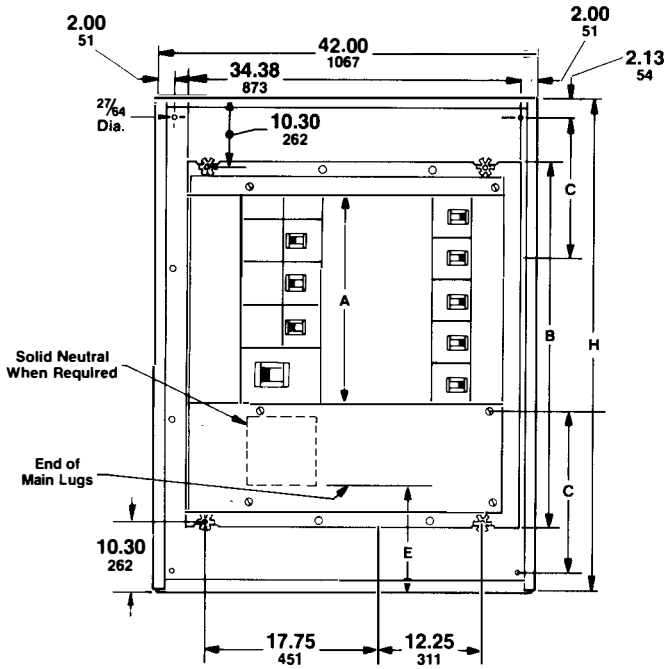
▲ Surface fronts for Type HCW panels are 4-piece construction without door. If a door is required, change flush catalog number suffix from F to S. See typical flush front for dimensions.



I-LINE® CIRCUIT BREAKER PANELBOARDS TYPE HCW—1200 AMPERE MAXIMUM MAIN LUGS

CLASS
2110

DIMENSIONS



Branch connection phasing is determined by circuit breaker selection.

Dual Dimensions: **INCHES**
Millimeters

Catalog Number				Main Lugs Ampere Rating	H		A		B		C		E		F		G		H	Number of Mounting Holes	
Interior	Box	Surface Front	Flush Front		IN	mm	IN	mm	IN	mm	IN	mm	IN	mm	IN	mm	IN	mm			IN
HCW1460-12N	HC4250DB	HC50S ▲	HC4250TF	1200	50.00	1270	13.50	343	30.00	762	22.85	580	16.00	406	4.25	121	11.25	286	27.40	696	6
HCW2359-12N	HC4259DB	HC59S ▲	HC4259TF	1200	59.00	1499	22.50	572	39.00	991	27.23	695	16.00	406	4.25	121	11.25	286	36.40	925	6
HCW3268-12N	HC4268DB	HC68S ▲	HC4268TF	1200	68.00	1727	31.50	800	48.00	1219	31.85	809	16.00	406	4.25	121	11.25	286	45.40	1153	6
HCW5086-12N	HC4286DB	HC86S ▲	HC4286TF	1200	86.00	2184	49.50	1257	66.00	1676	27.23	692	16.00	406	4.25	121	11.25	286	63.40	1610	8

▲ Flush lock with 3-point latching.
▲ Surface fronts for Type HCW panels are 4-piece construction without door. If a door is required, change flush catalog number suffix from F to S. See typical flush front for dimensions.

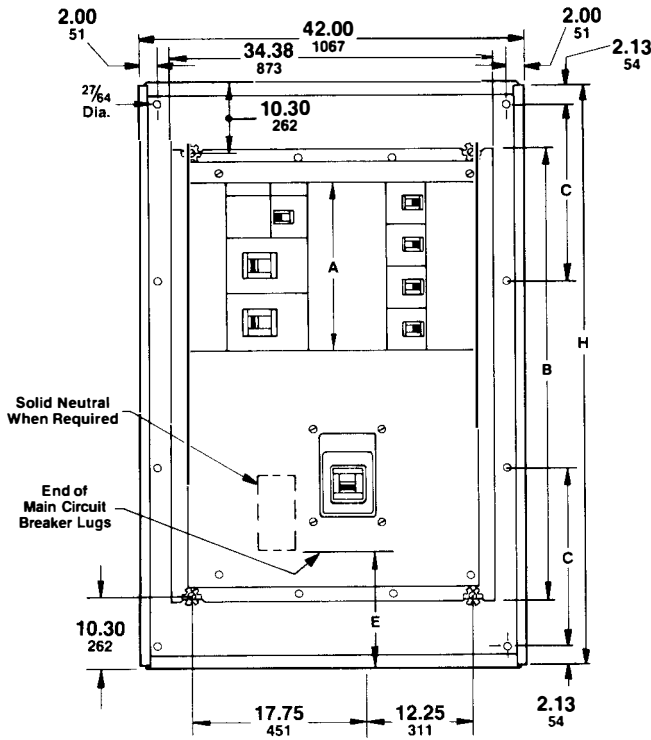


I-LINE®

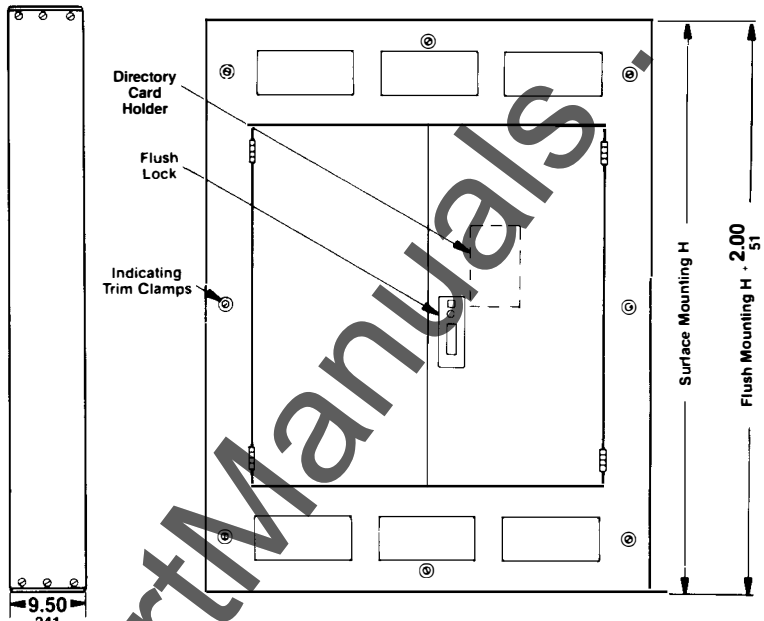
CIRCUIT BREAKER PANELBOARDS

TYPE HCW—800 AMPERE MAXIMUM MAIN CIRCUIT BREAKER

DIMENSIONS

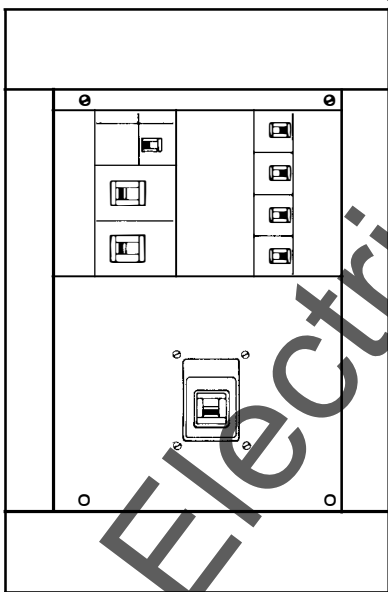


TYPICAL BOX WITH INTERIOR

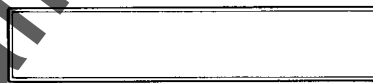


TYPICAL FLUSH FRONT

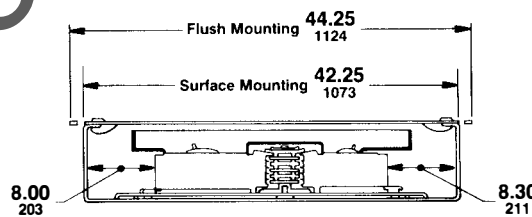
TYPICAL BOX SIDE VIEW



TYPICAL SURFACE FRONT (4 PIECE TRIM-NO DOOR)

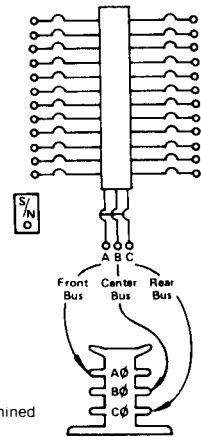


TYPICAL ENDWALL



TYPICAL MOUNTING OF FA, FH, FC, FY, Q2, Q2-H, Q2H, IF, KA, KH, KC, IK, Q4, LA, IL or LH CIRCUIT BREAKERS

Branch connection on phasing is determined by circuit breaker selection.



TYPICAL WIRING DIAGRAM

Dual Dimensions: **INCHES**
Millimeters

Catalog Number				Main Breaker Amp. Rating	H		A		B		C		E		F		G		H		Number of Mounting Holes
Interior	Box	Surface Front	Flush Front		IN	mm	IN	mm	IN	mm	IN	mm	IN	mm	IN	mm	IN	mm	IN	mm	
HCW1868-6M	HC4268DB	HC68S ▲	HC4268TF	600	68.00	1727	18.00	457	48.00	1219	31.85	809	14.00	356	4.25	121	11.25	286	45.40	1153	6
HCW3686-6M	HC4286DB	HC86S ▲	● HC4286TF	600	86.00	2184	36.00	914	66.00	1676	27.23	692	14.00	356	4.25	121	11.25	286	63.40	1610	8
HCW1868-8M	HC4268DB	HC68S ▲	HC4268TF	800	68.00	1727	18.00	457	48.00	1219	31.85	809	15.00	381	4.25	121	11.25	286	45.40	1153	6
HCW3686-8M	HC4286DB	HC86S ▲	● HC4286TF	800	86.00	2184	36.00	914	66.00	1676	27.23	692	15.00	381	4.25	121	11.25	286	63.40	1610	8

▲ Flush lock with 3-point latching.

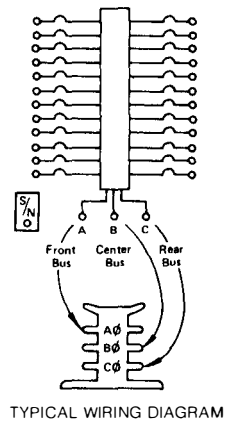
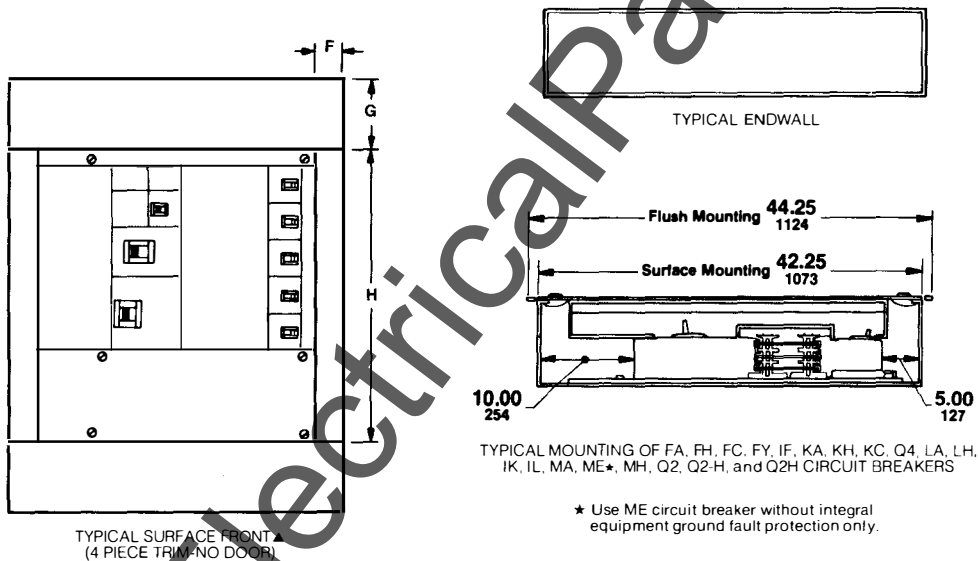
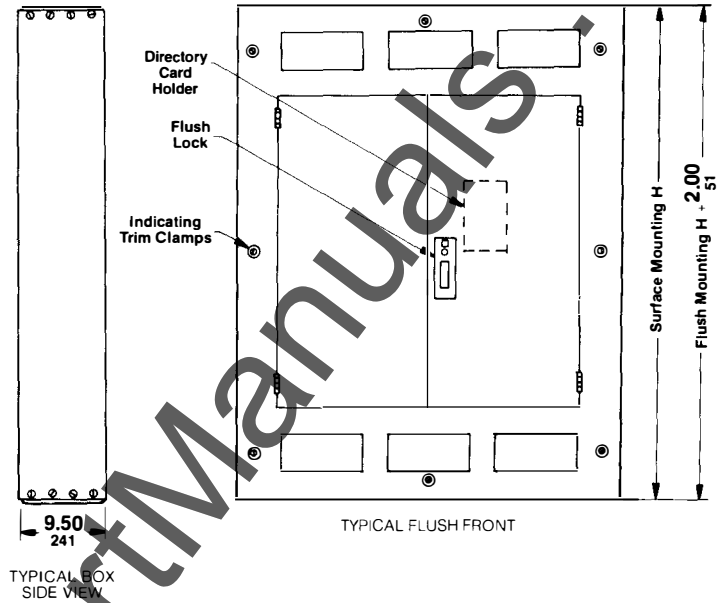
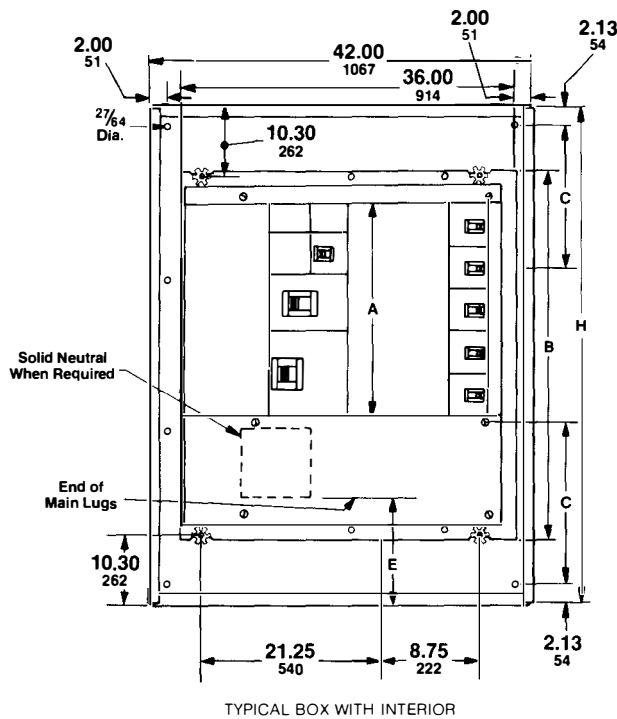
▲ Surface fronts for Type HCW panels are 4-piece construction without door. If a door is required, change flush catalog number suffix from F to S. See typical flush front for dimensions.



I-LINE® CIRCUIT BREAKER PANELBOARDS TYPE HCWM—1200 AMPERE MAXIMUM MAIN LUGS

CLASS
2110

DIMENSIONS



Dual Dimensions: **INCHES**
Millimeters

Branch connection phasing is determined by circuit breaker selection.

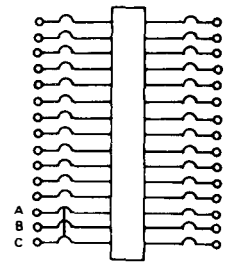
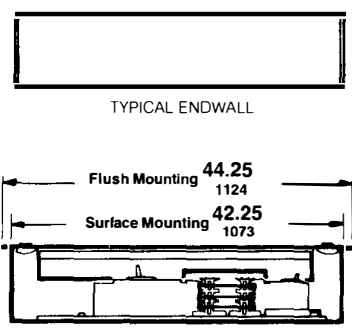
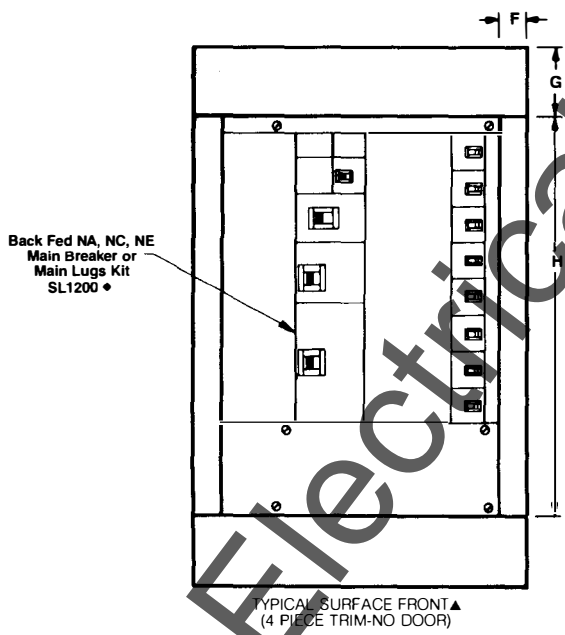
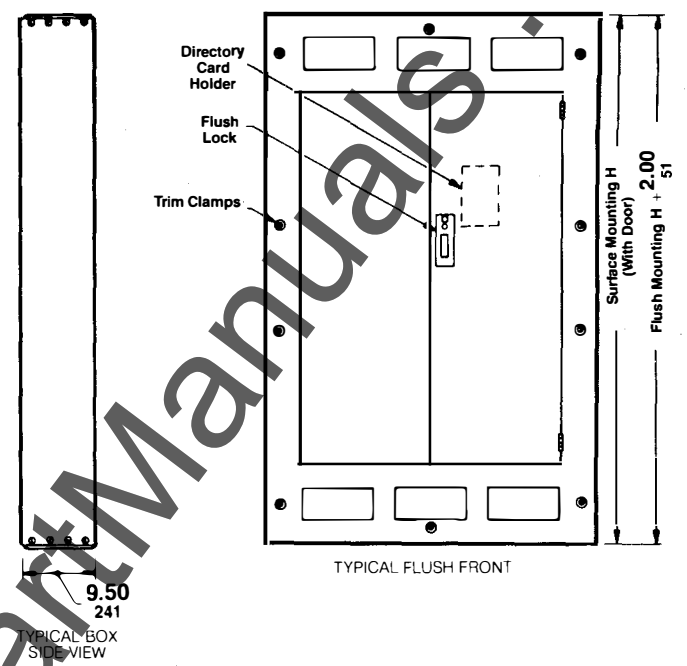
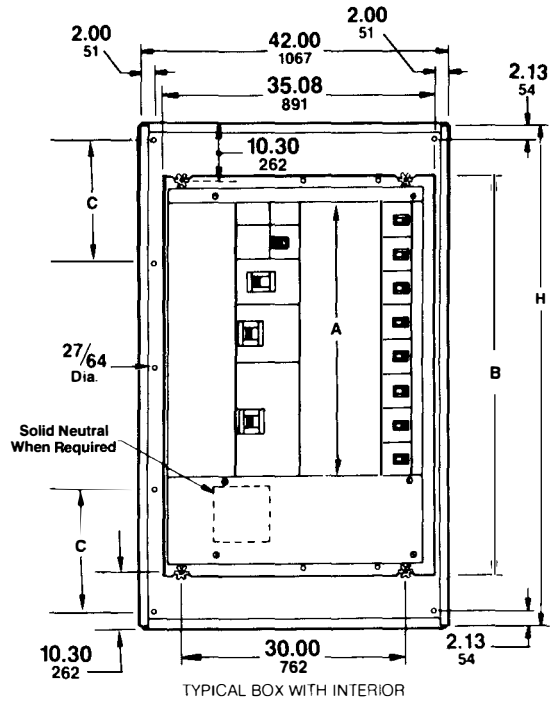
Catalog Number				Main Lugs Ampere Rating	H		A		B		C		E		F		G		H		Number of Mounting Holes
Interior	Box	Surface Front	Flush Front		IN	mm	IN	mm	IN	mm	IN	mm	IN	mm	IN	mm	IN	mm	IN	mm	
HCWM1450-12N	HC4250DB	HC50S ▲	• HC4250TF	1200	50.00	1270	13.50	343	30.00	762	22.85	580	16.00	406	4.25	121	11.25	286	27.40	696	6
HCWM2359-12N	HC4259DB	HC59S ▲	• HC4259TF	1200	59.00	1499	22.50	572	39.00	991	27.23	695	16.00	406	4.25	121	11.25	286	36.40	925	6
HCWM3268-12N	HC4268DB	HC68S ▲	• HC4268TF	1200	68.00	1727	31.50	800	48.00	1219	31.85	809	16.00	406	4.25	121	11.25	286	45.40	1153	6
HCWM5086-12N	HC4286DB	HC86S ▲	• HC4286TF	1200	86.00	2184	49.50	1257	66.00	1676	27.23	692	16.00	406	4.25	121	11.25	286	63.40	1610	8

Flush lock with 3-point latching
Surface fronts for Type HCWM panels are 4-piece construction without door. If a door is required, change flush catalog number suffix from F to S. See typical flush front for dimensions.

I-LINE® CIRCUIT BREAKER PANELBOARDS

TYPE HCWM-U — 1200 AMPERE MINIMUM MAIN LUGS OR MAIN BREAKER

DIMENSIONS



★ Use ME circuit breaker without integral equipment ground fault protection only.

Branch connection phasing is determined by circuit breaker selection.

Dual Dimensions: **INCHES**
Millimeters

Catalog Number				Main Lugs/ Main Breaker Amp. Rating	H		A		B		C		F		G		H		Number of Mounting Holes
Interior	Box	Surface Front	Flush Front		IN	mm	IN	mm	IN	mm	IN	mm	IN	mm	IN	mm	IN	mm	
HCWM5486-12U	HC4286DB	HC86S ▲	• HC4286TF	1200	86.00	2184	54.00	1372	66.00	1676	27.23	692	4.25	121	11.25	286	63.40	1610	8

▲ Flush lock with 3-point latching.
 ▲ Surface fronts for Type HCWM-U panels are 4-piece construction without door. If a door is required, change flush catalog number suffix from F to S. See typical flush front for dimensions.
 ▲ 15° of mounting space is taken up by the back fed main lug kit or NA, NC, NE main circuit breaker leaving 93° of branch circuit breaker mounting space.

