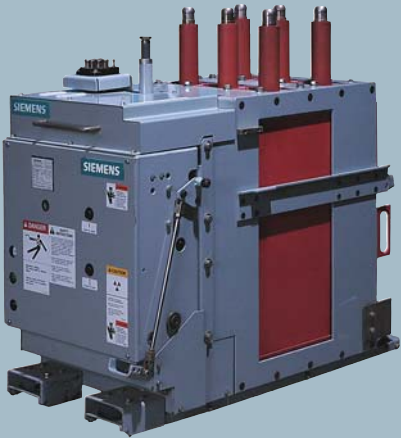


# GER & GEH Medium Voltage Replacement Circuit Breakers

ANSI 4.76/8.25/15kV at 250–1000 MVA, 1200-3000 Amperes



5-GER  
(Replacement for  
GE Magneblast AM)

Replacement breakers provide a cost-effective way to upgrade your system capabilities while saving you from costly maintenance and lost productivity while preserving your investment in existing cubicles and cables.

Siemens provides the experience your company needs to successfully extend the life of your equipment. Our circuit breakers are manufactured using the same fixtures as the original General Electric breakers.

## Why Replacement Breakers?

- Increased Reliability and Performance
- Reduced Operating and Maintenance Expenditures
- Reduced Downtime, Minimal Changeover Time During Upgrade
- Preserved Investment in Existing Cubicles
- Improved Employee and Environmental Safety

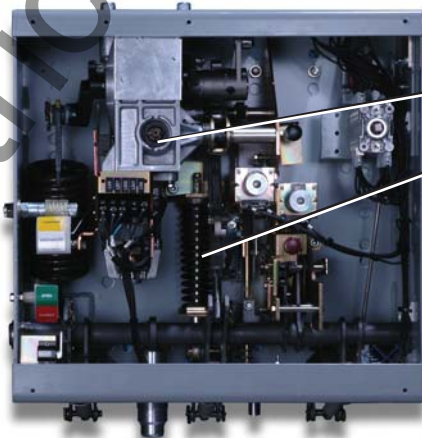


5-GEH  
(Replacement for  
GE Magneblast AMH)

## Why Siemens?

Siemens Offers the Best Vacuum Circuit Breaker in the Industry.

- Superior Performance, Longer Service Life
  - 10,000 full load operation, 10-year maintenance cycle on replacement circuit breakers with 3AH operator
- Standard Operator on All Siemens Replacement, Medium Voltage Distribution, and Outdoor Vacuum Circuit Breakers
  - Reduced part count and inventory
  - Minimized maintenance training required
- Extensive Replacement Breaker Experience – 750+ projects since 1983
  - Over 300,000 3AF/H series circuit breakers in service worldwide
  - Nuclear 1E Rated (350+ breakers)
  - Design, Production Testing per ANSI, IEEE
- Full Range of Service Capabilities by Skilled Factory-Trained Engineers



## 3AH Operator Features:

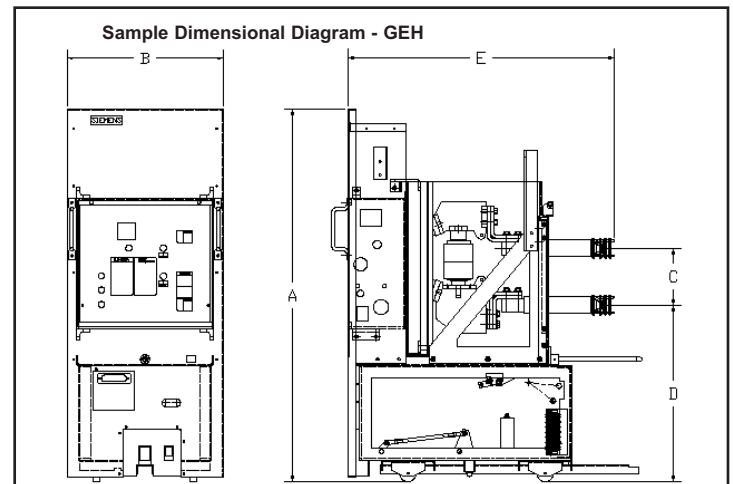
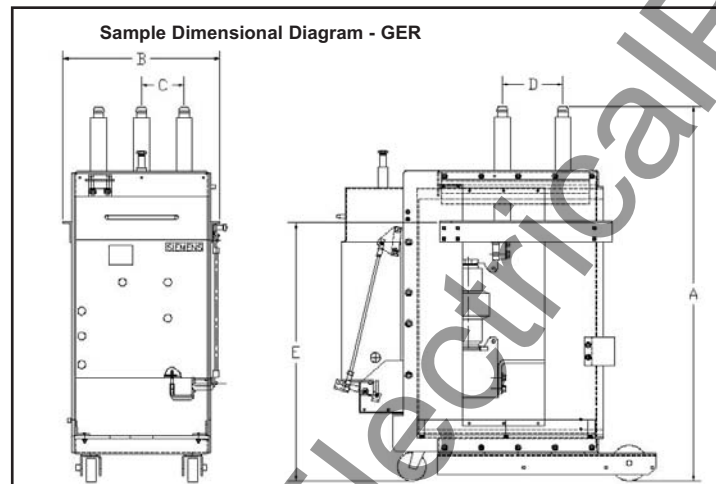
- Spring charge motor mechanism - lifetime lubricated gear box
- Operating linkage - machine parts vs. stamped metal
- Change-out of components - easily accessible
- Vacuum contact erosion indication - easily verifiable

# Siemens Type GER & GEH Medium Voltage Vacuum Circuit Breakers For General Electric AM & AMH

The following circuit breakers are available as pre-engineered designs.

Replacement Circuit Breaker	Nominal Voltage Class	Nominal 3-Phase MVA Class	Maximum Voltage	Voltage Range Factor	Interrupting Time	Full Wave Withstand Test Voltage	Continuous Current (60 Hz)	Short Circuit Current (at max. kV)	Close and Latch Capability	Nominal Weights
	kV	MVA	kV rms		Cycles	kV Peak	Amperes	kA rms	kA rms	lbs.
5 GER-250	4.16	250	4.76	1.24	5	60	1200, 2000	29	58	750
5 GER-350	4.16	350	4.76	1.19	5	60	1200, 2000	41	78	1250
5 GER-350	4.16	350	4.76	1.19	5	60	3000	41	78	2450
7 GER-500	7.2	500	8.25	1.25	5	95	1200, 2000	33	66, 77	1500
15 GER-500	13.8	500	15.0	1.3	5	95	1200, 2000	18	37, 58	1500
15 GER-750	13.8	750	15.0	1.3	5	95	1200, 2000	28	58, 77	1500
15 GER-1000	13.8	1000	15.0	1.3	5	95	1200, 2000	37	77	1560
15 GER-1000	13.8	1000	15.0	1.3	5	95	3000	37	77	1730
5 GEH-250	4.16	250	4.76	1.24	5	60	1200, 2000	29	58	675

Dimensions (Inches)							
	5 GER-		7/15 GER-		15 GER-		15 GEH-
	250 1200/2000	350 1200/2000	250 1200/3000	500/750 1200/2000	1000 1200/2000	1000 3000	250 1200/2000
A	40.25	52.50	52.50	52.50	67.00	67.00	55.88
B	22.00	22.00	22.00	22.00	32.00	36.25	23.44
C	6.00	6.00	9.13	9.13	9.75	11.00	8.50
D	8.50	8.50	8.50	8.50	8.50	10.88	26.50
E	22.25	36.25	36.25	36.25	49.00	49.00	40.00



## Contact Us

To find out more about Siemens replacement breakers, please contact your local Siemens representative or (800) 347-6659 regarding your site specific application.

Siemens Power Transmission & Distribution, Inc.  
Service Solutions Division  
7000 Siemens Road  
Wendell, NC 27591  
[www.usa.siemens.com/energy](http://www.usa.siemens.com/energy)