

SIEMENS-ALLIS

Switchgear

**RENEWAL PARTS
ORDERING GUIDE**

**TYPE FA-350B, 5-kV
AIR MAGNETIC CIRCUIT BREAKERS
WITH
STORED ENERGY OPERATORS
TYPE 515-3**

Supplement to 18X5930

18X5931
June, 1978

HOW TO USE YOUR RENEWAL PARTS ORDERING GUIDE

1. Locate the part or parts to be replaced in one of the drawings in this manual.
2. Identify each part by item number, description and part number. Give drawing figure number in which part is shown.
3. Include breaker type, rating and breaker serial number with your order.
4. Place your order with your Siemens-Allis representative.

ORDERING EXAMPLE

Type	<u>350A</u>	Rated Amps	<u>3000</u>	Serial Number	<u>H84295-3</u>
Type of Operator:	<input checked="" type="checkbox"/>	Solenoid	<input type="checkbox"/>	Stored Energy	
Renewal Parts Ordering Guide	<u>18X5931</u>				
<u>Fig</u>	<u>Item</u>	<u>Description</u>	<u>Part Number</u>	<u>Quantity</u>	
1	27	Link	71-113-440-004	1	
1	26	Pin	71-111-640-001	2	
4	2	Piston	71-114-161-504	1	

If required part is not identified in this manual -----

1. Make a copy of the drawing figure in which the part would appear.
2. Indicate with arrows or other markings location of part.
3. Describe or sketch required part.
4. Include breaker type, rating and breaker serial number with your order.
5. Place your order with your Siemens-Allis representative.

TABLE OF CONTENTS

	<u>Drawing No.</u>	<u>Figure</u>	<u>Page</u>
Stored Energy Breaker Assembly	18-728-035-601	1	1
Stored Energy Basic Breaker	18-469-269-502	1	1
Stud and Support Assembly	71-302-190-506	2	2
Stud and Contact Assembly	71-401-169-516	3	3
Main Contact Block Assembly	71-302-186-506	4	4
Arc Chute Assembly	18-471-243-513	5	5
Stored Energy Frame and Operator Assembly	18-468-715-501	6, 6A	6, 7
Type 515-2 Stored Energy Operator Assembly		7	8

ITEM DESCRIPTION FOR FIGURE 1

ITEM	DESCRIPTION	PART NUMBER	ITEM	DESCRIPTION	PART NUMBER
1	Contact Finger	18-657-511-578	20	Cover	18-657-769-369
2	Panel Assembly	71-206-907-506	21	Angle	71-118-070-001
3	Support Assembly	71-208-166-504	22	Shim	71-110-641-001
4	Support Assembly	71-208-166-505	23	Shim	71-110-641-002
5	Support Assembly	71-208-166-506	24	Washer	71-018-451-001
6	Barrier Assembly	71-208-182-501	25	Pin	71-111-640-001
7	Arc Chute Assembly	18-471-243-513	26	Link	71-113-440-002
8	Plate Assembly — L.H.	72-120-423-501	27	Spring	71-113-600-001
9	Plate Assembly — R.H.	72-120-423-502	28	Shim	71-113-679-001
10	Indicator	71-111-259-001	29	Angle	18-657-765-163
11	Label	15-171-383-002	30	Pin	71-164-062-013
12	Plate	71-118-068-002	31	Stud and Support	See Figure 2
13	Bar	71-118-069-001	32	Screw	15-615-024-001
14	Pin	71-164-062-010	33	Lock Washer	00-655-047-140
15	Indicator	71-167-932-001	34	Bearing Support	18-657-769-377
16	Connector	71-208-180-002	35	Retaining Ring	00-673-165-050
17	Plate	71-208-645-003	36	Label	71-114-294-001
18	Plate	71-208-645-004	37	Label	18-657-872-032
19	Cover	18-657-469-285	38	Frame and Operator	See Figure 10

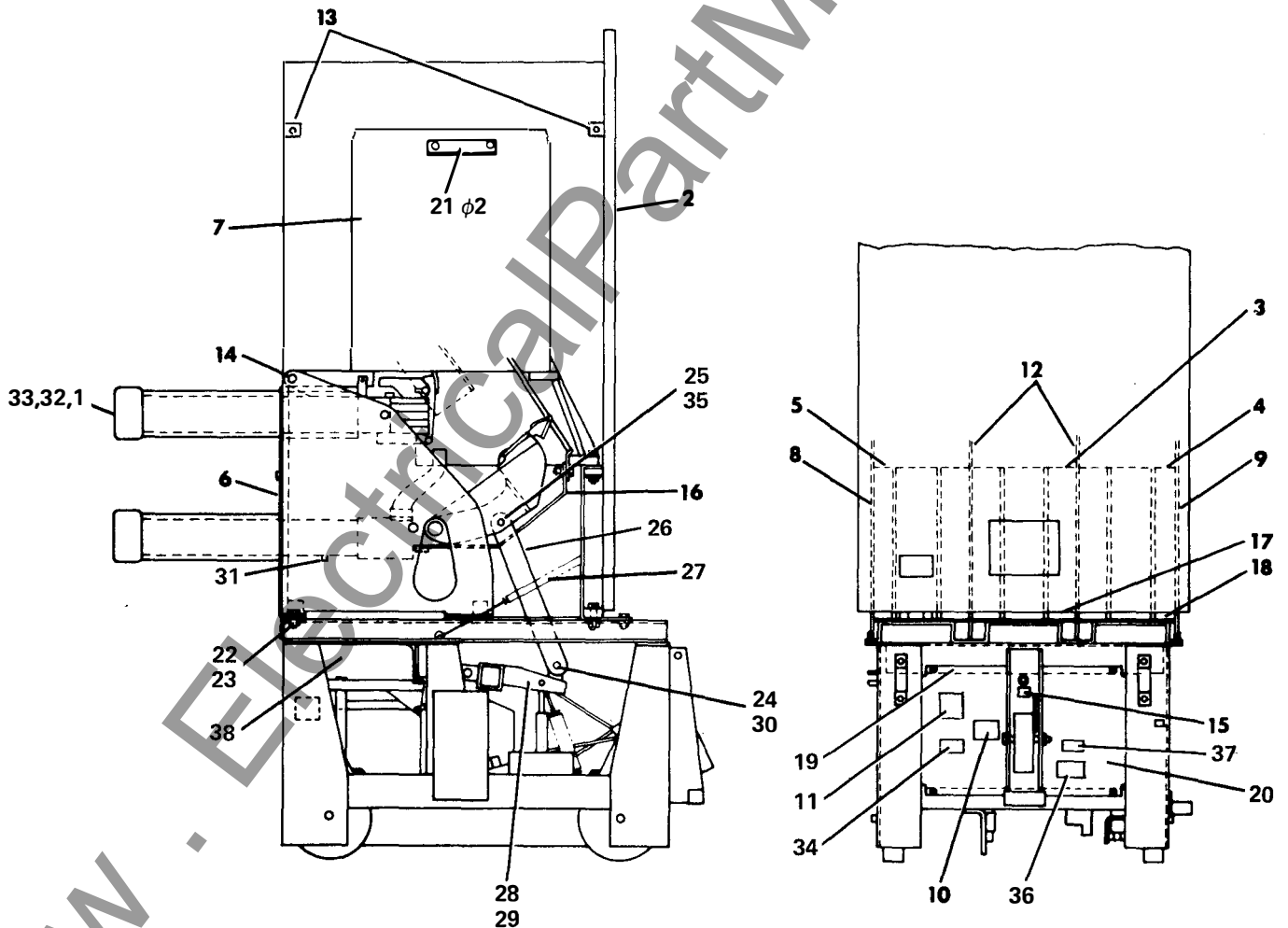


Figure 1. Stored Energy Breaker Assembly (18-728-035-601) and Stored Energy Basic Breaker (18-469-269-502)

ITEM DESCRIPTION FOR FIGURE 2

ITEM	DESCRIPTION	PART NUMBER
1	Stud and Contact Assembly	See Figure 3
2	Main Contact & Block	See Figure 4
3	Arc Runner	71-112-851-001
4	Arc Runner	71-112-852-001
5	Insulation	71-112-853-001
6	Nozzle	71-302-801-001
7	Side Plate	71-302-192-001
8	Plate	71-206-886-001
9	Support	71-110-276-001
10	Stud	71-110-277-001
11	Rod	71-110-282-001
12	Spacer	71-114-478-001
13	Rod	71-166-194-020
14	Washer	71-916-992-002
15	Screw	00-615-644-225
16	Screw	00-611-315-461

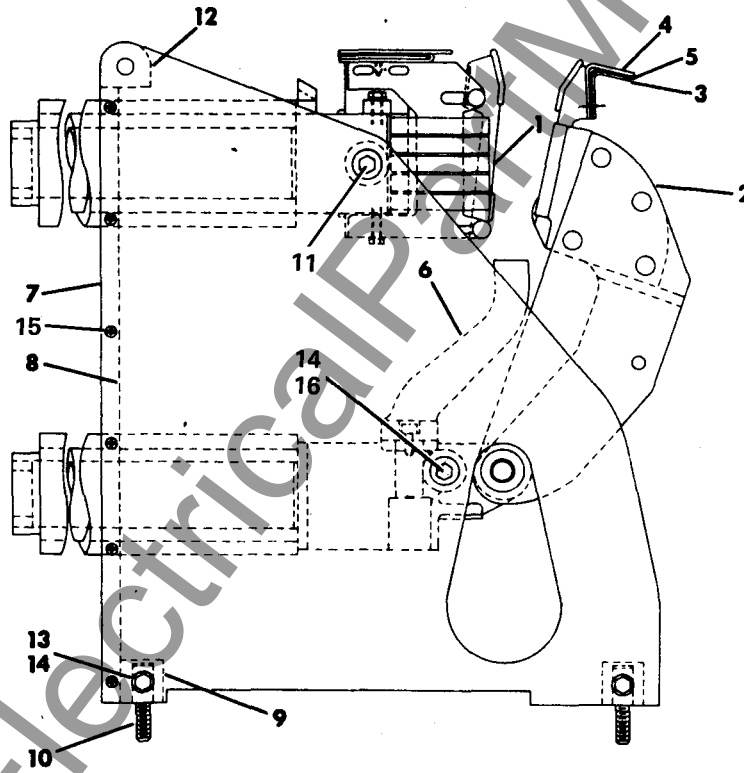


Figure 2. Stud and Support Assembly (71-302-190-506)

ITEM DESCRIPTION FOR FIGURE 3

ITEM	DESCRIPTION	PART NUMBER	ITEM	DESCRIPTION	PART NUMBER
1	Stud & Block (Upper)	71-302-339-501	23	Washer	71-140-784-001
2	Contact Finger Ass'y.	18-657-765-568	24	Tube	71-140-783-003
3	Arcing Contact	71-113-148-502	25	Screw	00-615-345-224
4	Bolt	71-111-464-501	26	Bumper	18-657-765-571
5	Runner Ass'y.	71-111-470-501	27	Thrust Race	15-813-129-002
6	Angle	71-112-847-001	28	Thrust Race	15-813-129-002
7	Block	71-207-269-002	29	Plate	71-111-467-001
8	Tube	71-207-878-001	30	Pin	71-111-487-001
9	Plate	71-209-084-001	31	Pin	71-115-541-501
10	Spring	71-204-605-012	32	Washer .36	71-105-182-010
11	Spring	71-204-604-027	33	Washer .25	71-105-182-009
12	Spring	71-204-606-019	34	Retaining Ring .25	00-673-165-025
13	Spring	71-204-604-028	35	Retaining Ring .31	00-673-165-031
14	Block & Tube Ass'y.	71-111-473-501	36	Washer	71-152-809-002
15	Tube	71-111-486-001	37	Whiz Lock	15-171-259-001
16	Spacer	71-111-490-001	38	Whiz Lock	15-171-259-002
17	Bumper	71-115-113-001	39	Whiz Lock	15-171-259-003
18	Bumper	71-111-492-002	40	Whiz Lock	15-171-259-004
19	Pin	71-111-494-001	41	Lock Nut	15-171-063-004
20	Bumper	71-112-832-002	42	Rd. Washer	00-651-007-146
21	Comp. Spring	71-204-605-021	43	Rd. Washer	00-651-027-139
22	Insulation	71-111-468-001			

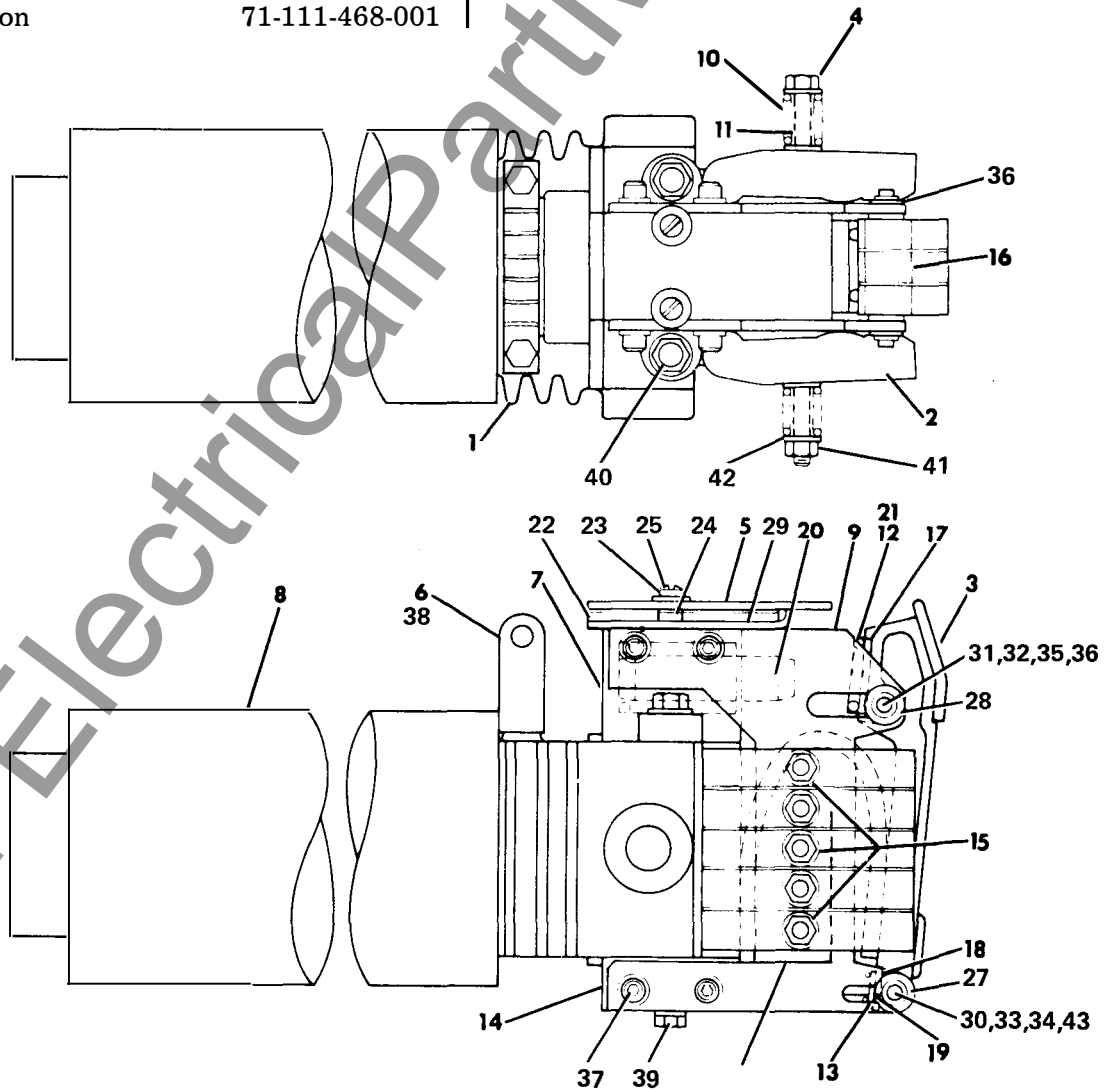


Figure 3. Stud and Contact Assembly (71-401-169-516)

ITEM DESCRIPTION FOR FIGURE 4

ITEM	DESCRIPTION	PART NUMBER
1	Stud and Block - Lower	71-302-338-501
2	Disconnect Arm - L. H.	71-207-881-501
3	Disconnect Arm - R. H.	71-207-881-502
4	Contact	71-207-476-504
5	Guide	71-111-444-001
6	Screw	71-111-445-001
7	Washer	71-111-446-001
8	Nut	71-161-974-001
9	Tube	71-207-878-001
10	Spring	71-204-605-013
11	Disconnect Arm - L. H.	71-302-189-001
12	Disconnect Arm - R. H.	71-302-189-002

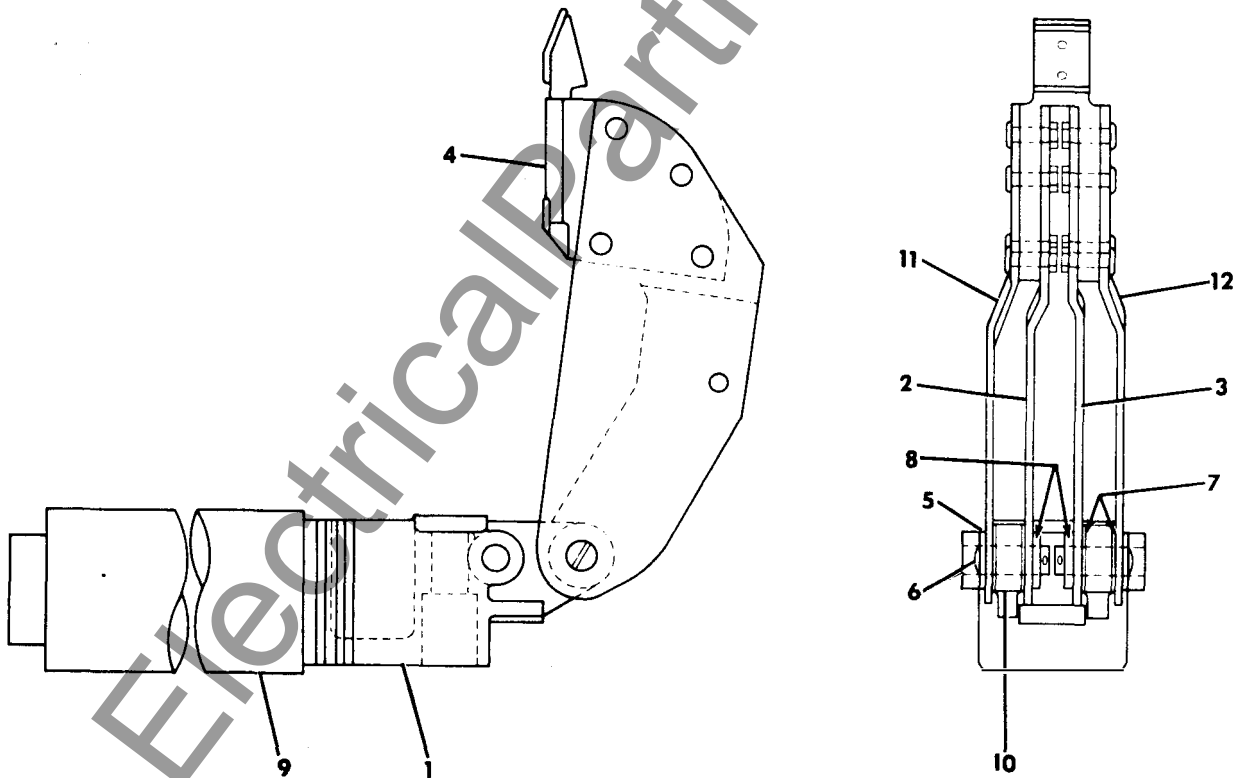


Figure 4. Main Contact Block Assembly (71-302-186-506)

ITEM DESCRIPTION FOR FIGURE 5

ITEM	DESCRIPTION	PART NUMBER	ITEM	DESCRIPTION	PART NUMBER
1	Side Plate	18-468-934-501	21	Plate	71-208-174-001
2	Side Plate	18-468-934-502	22	Block	71-112-880-001
3	Plate	71-112-878-001	23	Transfer Stack	71-208-169-501
4	Raffle	71-208-164-503	24	Plate	71-112-872-501
5	Baffle	71-208-164-504	25	Connector	18-657-765-157
6	Support	18-728-031-501	26	Magnetic Circuit	71-112-825-501
7	Support	18-728-031-502	27	Insulation	71-112-828-001
8	Pole Piece	71-116-147-503	28	Screw	71-114-586-002
9	Plate	71-116-571-001	29	Strip	71-209-613-002
10	Plate	71-116-573-001	30	Plate	71-116-576-002
11	Block	71-116-577-001	31	Ring Insulation	18-657-765-156
12	Band	18-657-765-161	32	Glass Tape	00-479-411-900
13	Block	71-116-187-002	33	Stud	14-109-947-009
14	Arc Runner	71-209-612-001	34	Stop Nut	00-633-039-210
15	Strip	71-209-613-001	35	Washer	00-651-017-902
16	Plate	71-116-576-001	36	Block	18-657-765-159
17	Barrier	71-209-332-501	37	Block Slotted	18-657-765-160
18	Barrier Stack	18-394-426-514	38	Sealant	15-333-031-002
19	Core	71-200-806-505	39	Caution Label	71-113-871-001
20	Coil	18-728-500-568	40	Arrow Label	15-171-120-004

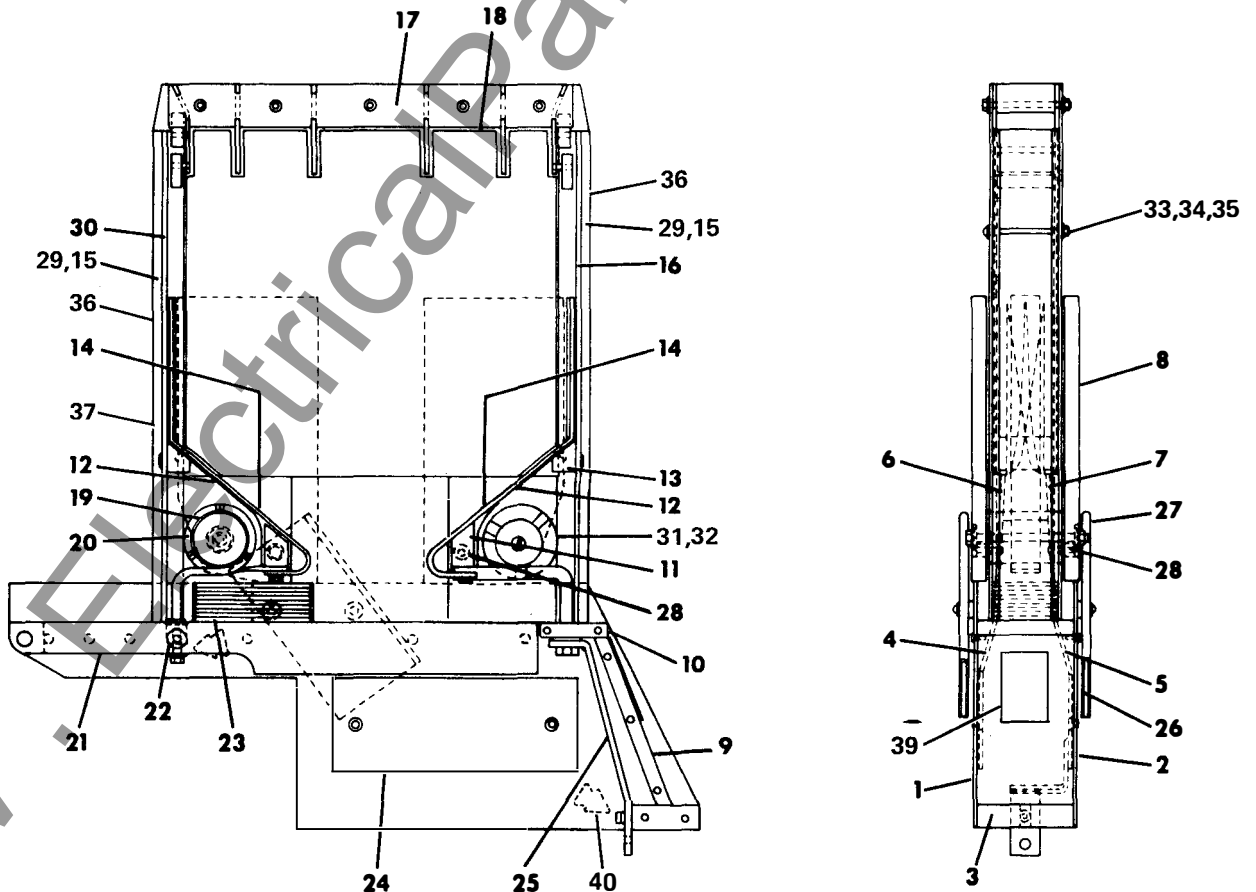


Figure 5. Arc Chute Assembly (18-471-243-513)

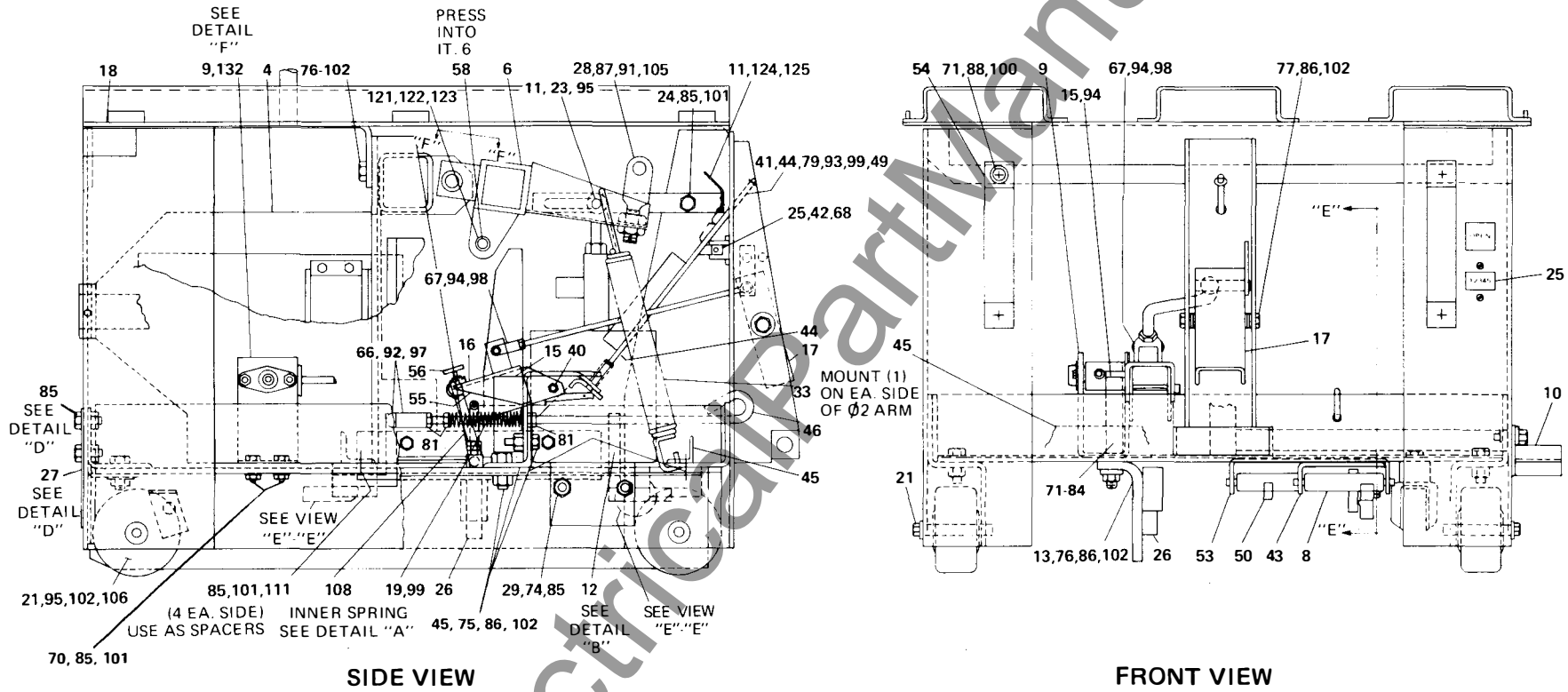


Figure 6. Stored Energy Frame & Operator Assembly

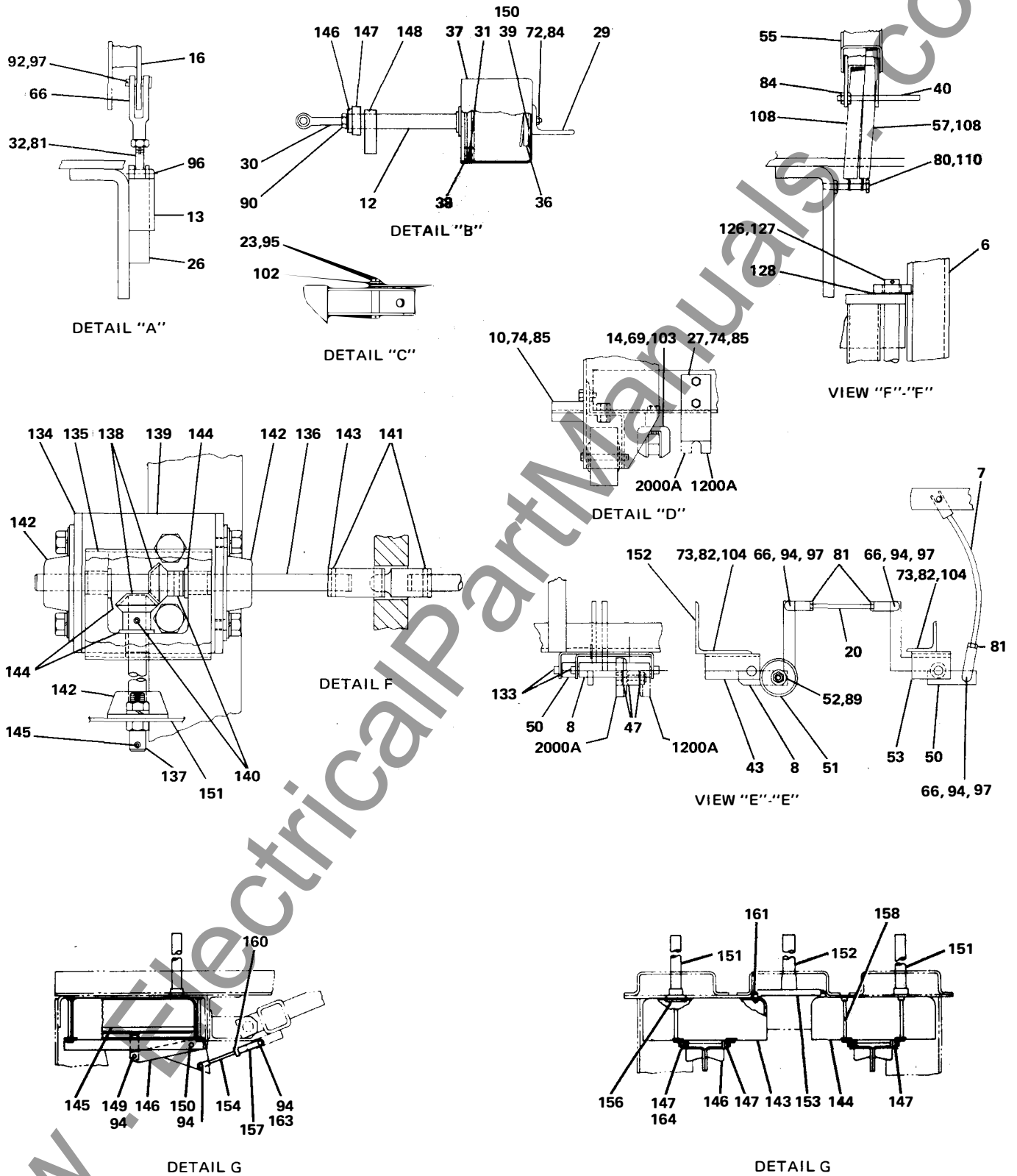


Figure 6A. Stored Energy Frame & Operator Assembly

ITEM DESCRIPTION FOR FIGURE 6 & 6A

ITEM	DESCRIPTION	PART NUMBER	USAGE	ITEM	DESCRIPTION	PART NUMBER	USAGE
4	Operator Assembly	18-657-655-508		76	Hex Hd Cap Screw	00-611-315-548	
6	(Radius) Arm Assembly	18-657-315-594		77	Hex Hd Cap Screw	00-611-315-562	
7	Push Rod Assembly	18-723-509-501		79	Cap	00-633-182-060	
8	Crank Assembly	18-724-407-501		80	Hex Hd Cap Screw	00-611-315-384	
9	Manual Charge Arrgt.	18-391-037-502		81	Hex Nut	00-631-003-204	
10	Guide Assembly	71-113-437-501		82	Hex Nut	00-631-059-106	
11	Indicator Arm Assembly	71-114-214-001		84	Locknut	15-171-063-006	
12	Piston Assembly	71-114-161-501		85	Locknut	15-171-063-011	
13	Guide Assembly	18-657-655-503		86	Locknut	15-171-063-012	
14	Ground Contact Ass'y.	71-114-787-502		87	Locknut	00-631-143-110	
15	Bracket Assembly	18-657-502-550		88	Nut	00-633-083-105	
16	Lever Assembly	72-120-568-502		89	Nut	00-633-025-220	
17	Foot Pedal Assembly	18-657-506-563		90	Jam Nut	00-631-171-108	
18	Frame Assembly	72-420-027-501		91	Jam Nut	00-631-171-110	
19	Spring	71-204-604-028		92	Cotter Pin	00-671-195-047	
20	Stud	18-292-228-031		93	Rod	18-657-804-084	
21	Pin	71-115-254-003		94	Cotter Pin	00-671-195-119	
22	Pin	71-104-754-035		95	Cotter Pin	00-671-195-191	
23	Pin	71-104-754-036		96	Roll Pin	00-671-176-377	
24	Shoulder Stud	71-108-105-003		97	Clevis Pin	00-957-211-901	
25	Oper. Counter	71-110-940-002		98	Clevis Pin	00-957-211-903	
26	Plunger	71-113-442-001		99	Rd Washer	00-651-007-146	
27	Stop	71-113-478-001		100	Rd Washer	00-651-007-900	
28	Connector	71-114-181-501		101	Rd Washer	00-651-007-214	
29	Angle	71-113-530-001		102	Rd Washer	00-651-007-285	
30	Rod End	71-113-541-001		103	Lockwasher	00-655-017-026	
31	Spring	71-113-621-001		104	Lockwasher	00-655-017-032	
32	Rod End	00-691-713-102		105	Lockwasher	00-655-017-040	
33	Spring	71-113-669-001		106	Wheel	18-657-411-257	
36	Bumper	71-114-154-001		108	Spring	15-171-700-001	
37	Cylinder	71-114-155-002		110	Jam Nut	00-631-143-104	
38	Packing	71-114-156-001		111	Hex Hd Cap Screw	00-611-315-468	
39	Valve Disc	71-115-244-001		121	Pin	18-657-464-105	
40	Rod	72-120-239-001		122	Retaining Ring	00-673-165-075	
41	Comp. Spring	71-140-125-001		123	Washer	71-152-809-026	
42	Spring	71-140-615-001		124	Indicator	71-101-247-001	
43	Bracket	72-120-708-001		125	Indicator	71-101-248-001	
44	Manual Trip Lever	18-728-500-512		126	Pin	71-161-921-004	
45	Angle	18-724-678-001		127	Cotter Pin	00-671-195-257	
46	Pull, Rod	18-657-229-199		128	Nyliner Flg. Bushing	00-815-279-020	
47	Washer	71-152-809-002		130	Rod End	00-691-713-102	
49	Bracket	18-657-522-326		132	Roll Pin	00-671-176-107	
50	Crank Assembly	18-723-508-501		133	Roll Pin	00-671-176-453	
51	Roller	72-120-706-001		134	Bracket	18-724-562-001	
52	Hex Hd Bolt	00-611-343-030		135	Drive Support	18-657-768-200	
53	Bracket	18-723-506-002		136	Drive Shaft	18-724-563-001	
54	Handle	15-171-175-001		137	Drive Shaft	18-724-563-003	
55	Arm	72-120-399-001		138	Miter Gear	18-657-783-356	
56	Switch	15-171-044-004		139	Cover	18-657-769-375	
57	Round (Rod)	71-104-107-021		140	Roll Pin	00-671-176-189	
58	Needle Bearing	00-813-119-814		141	Roll Pin	00-671-176-187	
66	Yoke End Adj	00-691-701-901		142	Bearing	15-171-387-001	
67	Yoke End Adj	00-691-701-903		143	V Joint	18-657-768-261	
68	Self Tap Screw	00-615-573-172		144	Bearing	00-815-081-040	
69	Hex Hd Cap Screw	00-611-365-378		145	Roll Pin	00-671-171-313	
70	Hex Hd Cap Screw	00-611-315-468		146	Plug	71-113-538-001	
71	Hex Hd Cap Screw	00-611-315-422		147	Coupling	71-141-157-001	
72	Hex Hd Cap Screw	00-611-315-424		148	Clamp	71-113-995-001	
73	Hex Hd Cap Screw	00-611-315-465		149	Rd Washer	00-651-007-356	
74	Hex Hd Cap Screw	00-611-315-466		150	Insulation	71-126-201-003	
75	Hex Hd Cap Screw	00-611-315-546		151	Support	18-657-769-377	

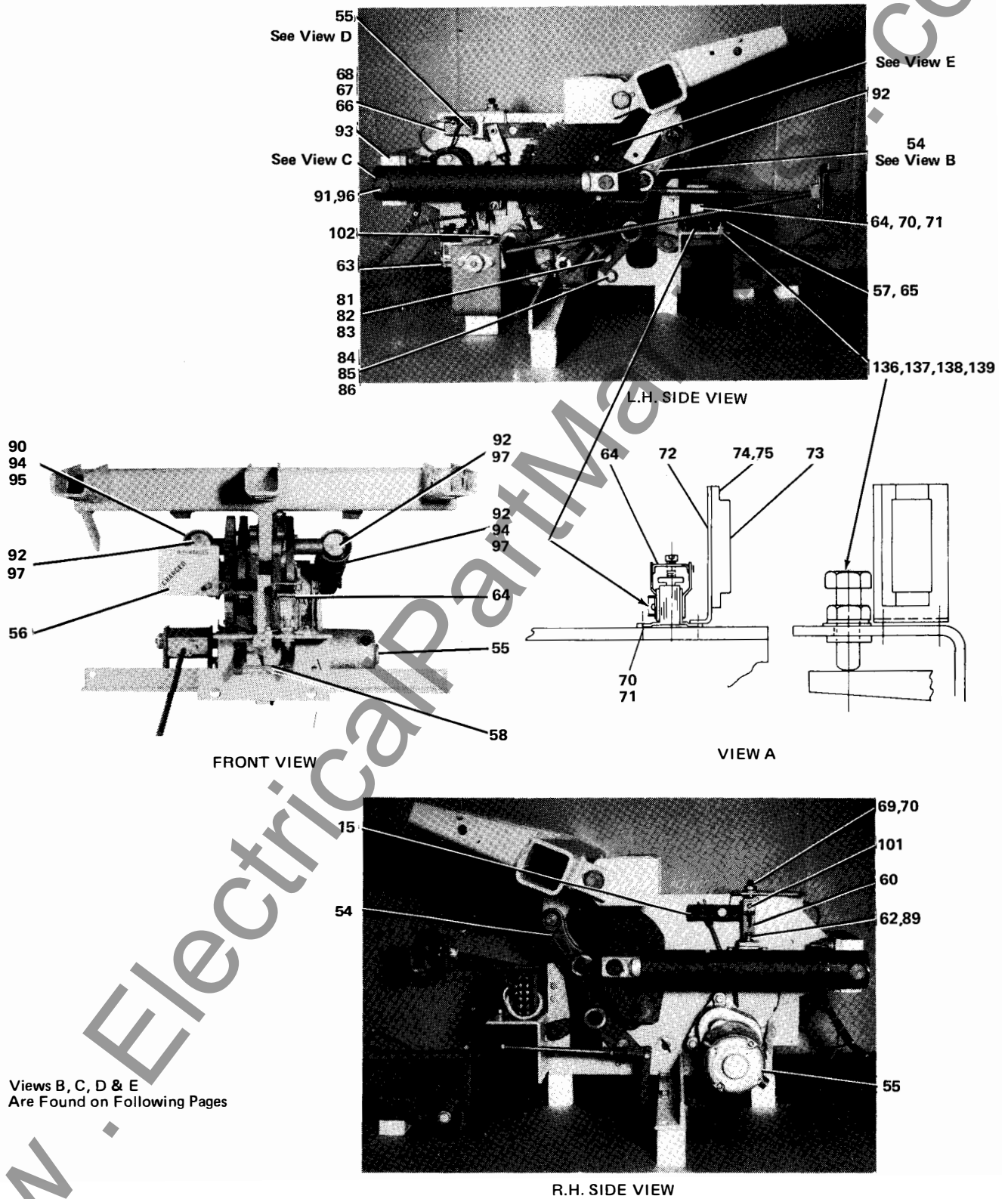
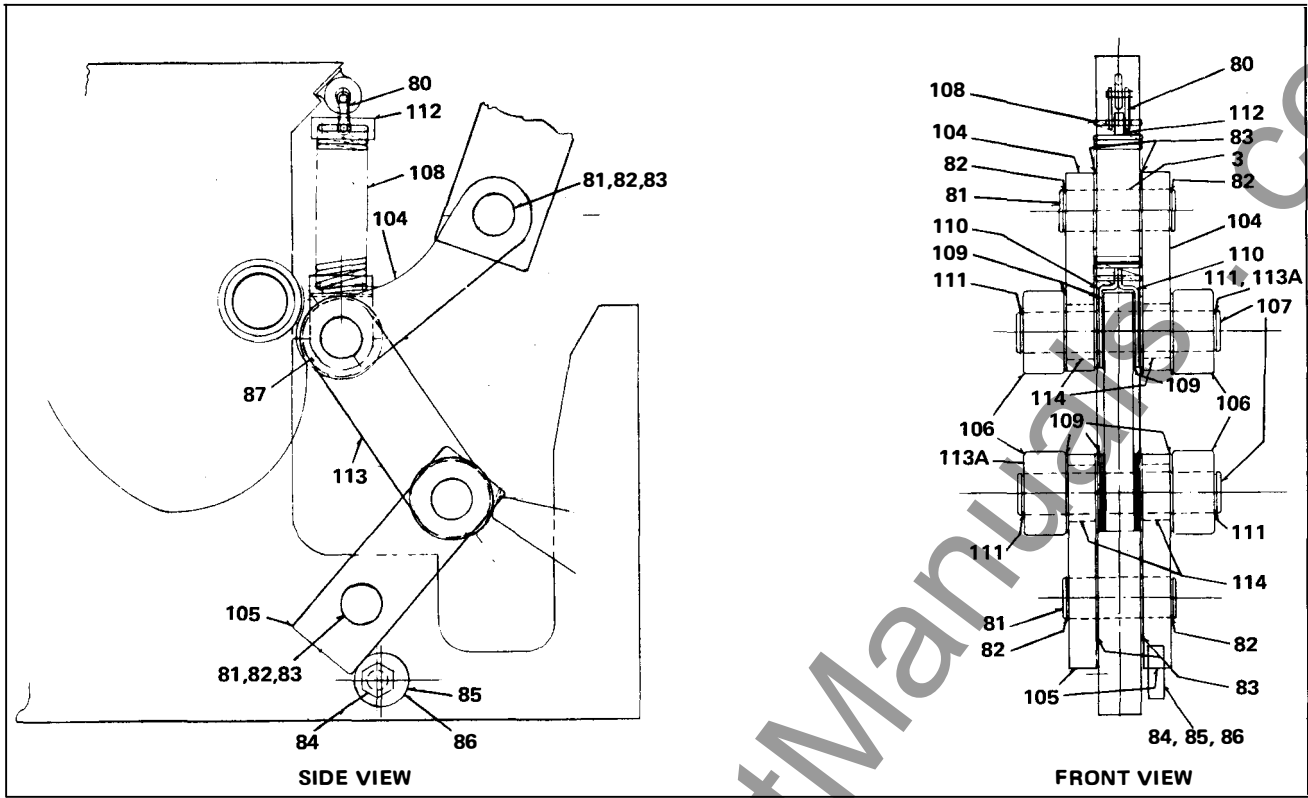
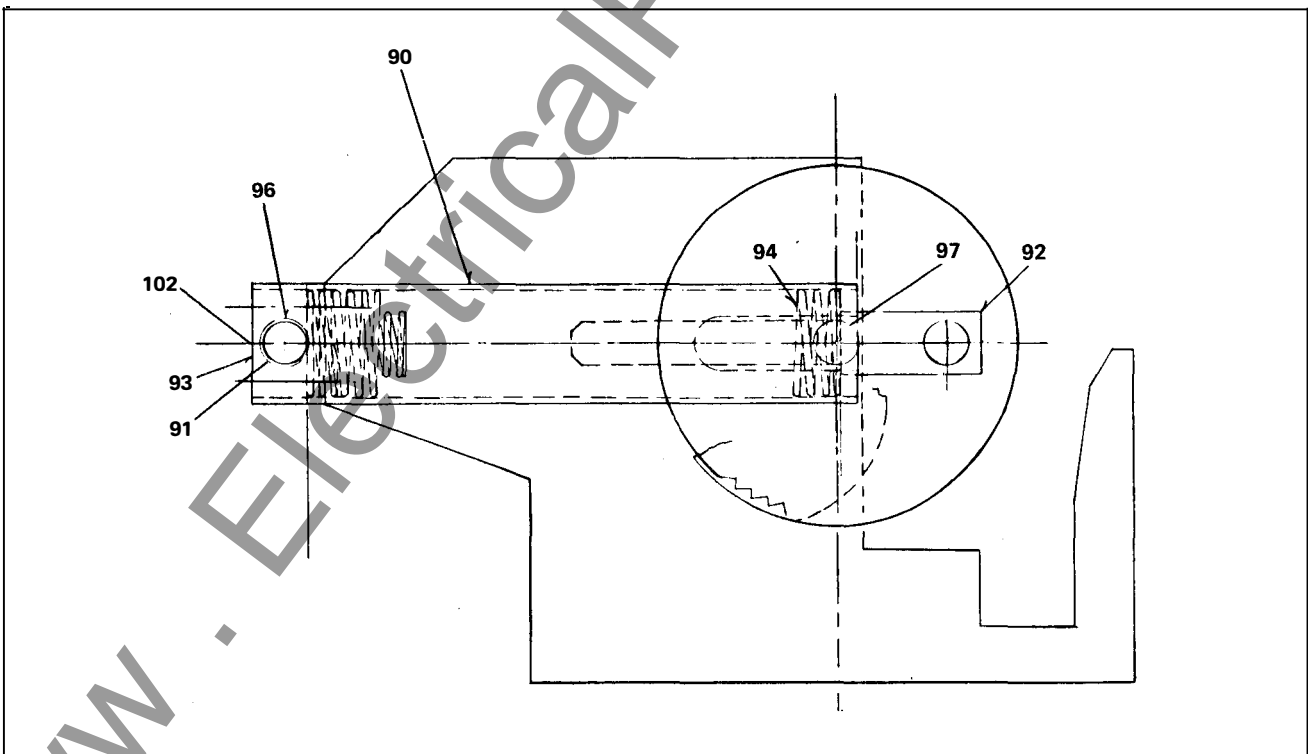


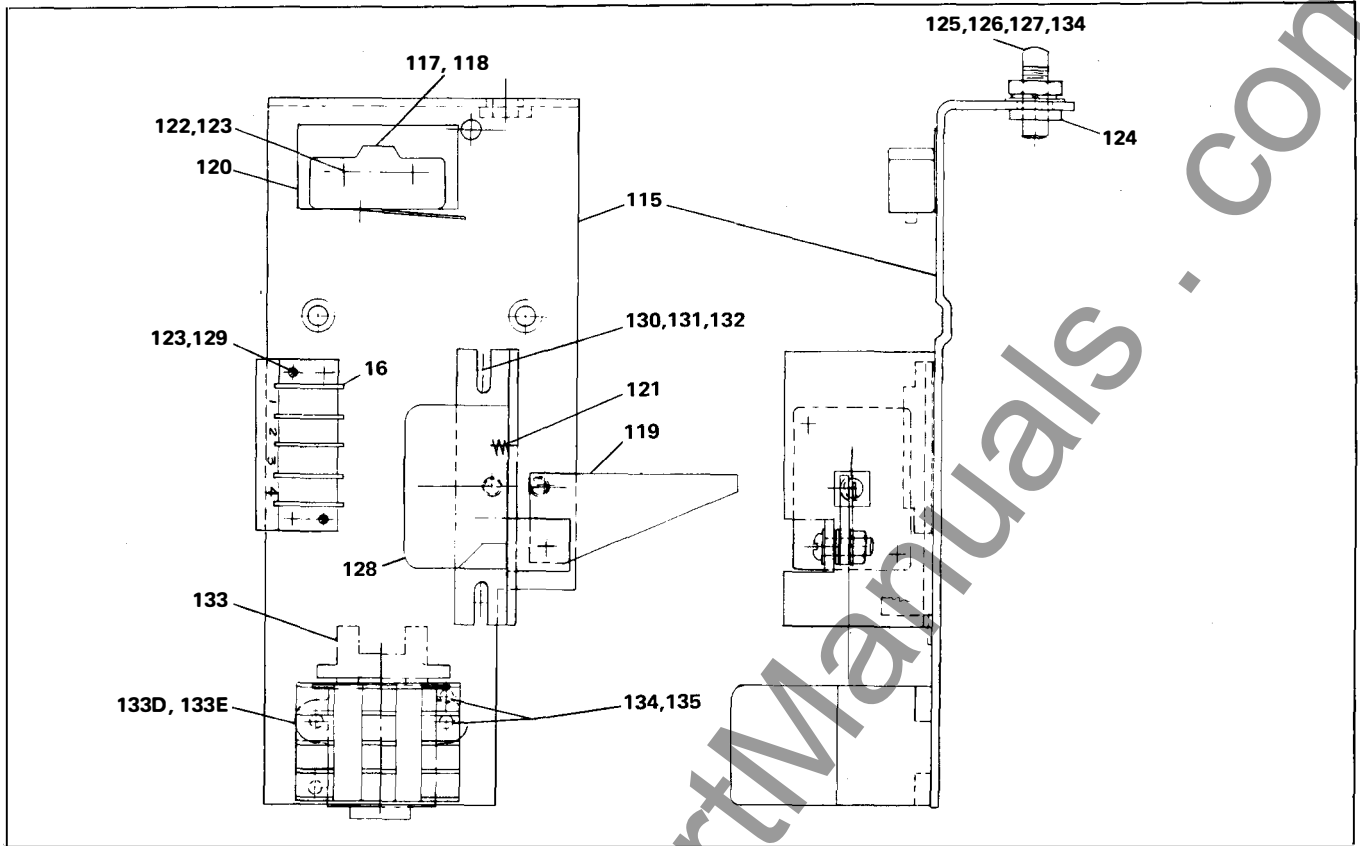
Figure 7. Type 515-2 Stored Energy Operator Assembly



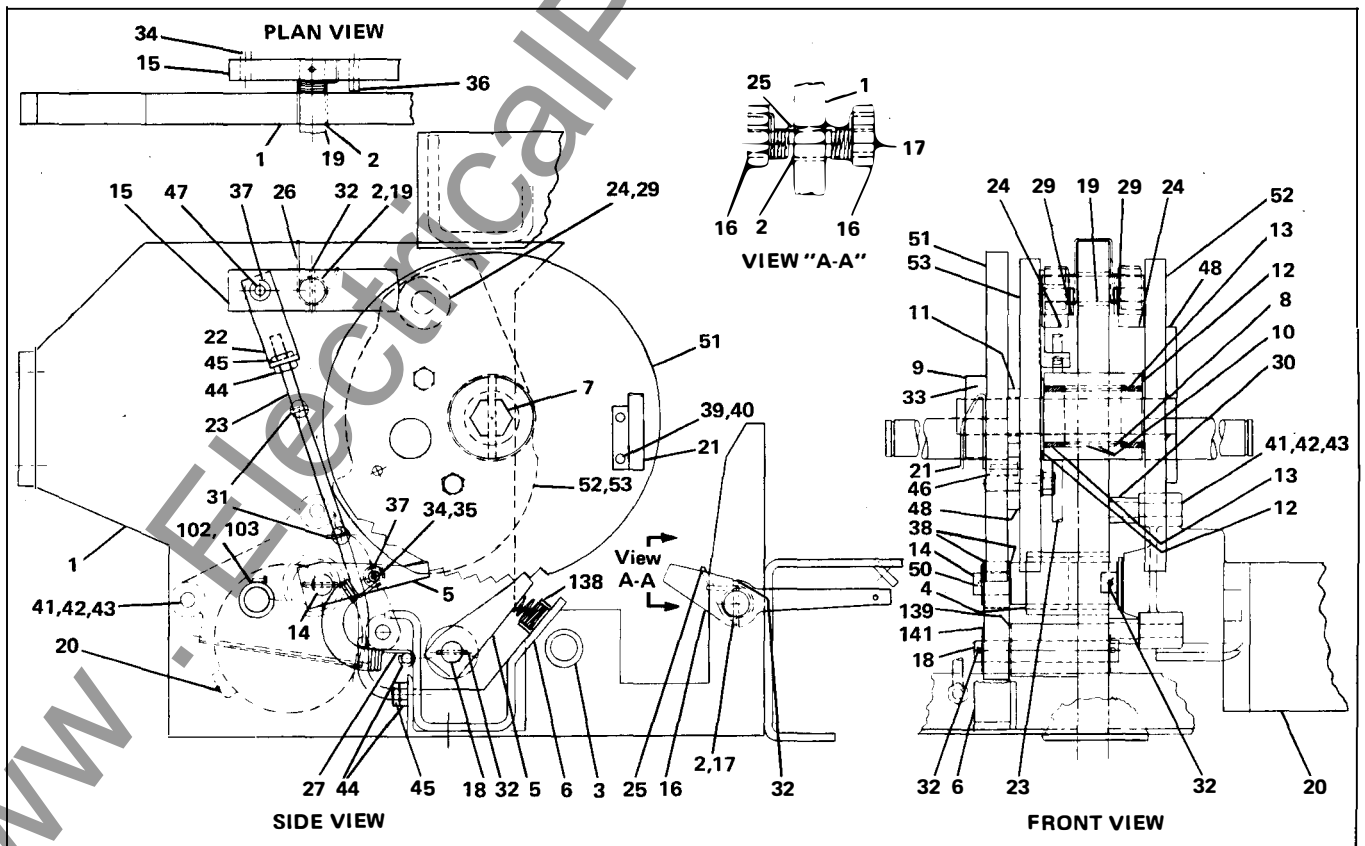
VIEW B



VIEW C



VIEW D



VIEW E
FRAME AND DRIVE ASSY.

ITEM DESCRIPTION FOR FIGURE 7

ITEM	DESCRIPTION	PART NUMBER	USAGE	ITEM DESCRIPTION	PART NUMBER	USAGE
1	Frame Assembly	18-657-770-512		63D	15-171-339-005	240V AC
2	Needle Bearing	00-813-119-810		63E	15-171-339-012	24V DC
3	Needle Bearing	00-813-119-814		64	15-171-339-006	24V DC
4	Needle Bearing	00-813-119-821		64A	15-171-339-007	48V DC
5	Pawl Assembly	18-657-485-536		64B	15-171-339-008	125V DC
6	Stop Bracket Assembly	18-657-816-564		64C	15-171-339-009	250V DC
8	Slit Spacer	18-657-800-113		64D	15-171-339-017	120V AC
9	Collar	18-657-467-290		64E	15-171-339-011	230V AC
10	Inner Race**	18-657-467-335		65	18-395-321-801	Reclose
11	Spacer	18-158-935-009		66	18-657-467-239	
12	Thrust Washer	00-815-225-131		67	00-615-223-172	
13	Needle Bearing	15-813-119-003		68	00-655-017-020	
14	Pin	18-657-463-368		69	00-651-027-087	
15	Stop Latch	18-657-463-388		70	00-655-017-022	
16	Trip Latch	18-657-463-390		71	15-171-738-001	
17	Pin	18-657-464-012		72	18-657-524-111	
18	Pin	18-657-523-064				
19	Shaft	18-657-463-389		73	00-857-036-012	
20	Motor*	18-469-223-001	48V DC	74	00-615-471-126	
		18-469-223-002	115 AC	75	00-655-047-060	
			125V DC	80	00-831-349-065	
		18-469-223-003	230 AC	81	18-657-464-105	
			250V DC	82	00-673-165-075	
21	Charge Disc. Actuator	18-657-522-305		83	71-152-809-026	
22	Bracket	18-657-522-304		84	15-171-059-005	
23	Interlock Rod	18-657-522-269		85	18-657-464-118	
24	Roller Bearing	15-813-073-003		86	00-655-067-200	
25	Torsion Spring	18-657-466-081		87	00-651-027-050	
26	Torsion Spring	18-657-466-080		88	18-657-765-078	
27	Pawl Return Spring	18-657-229-240		89	00-671-195-115	
28	Comp. Spring	15-837-321-005		90	18-657-769-378	
29	Retaining Ring	00-673-165-062		91	18-657-463-369	
30	Spacer	18-158-935-011		92	18-657-523-208	
31	Adj. Screw	00-617-499-375		93	18-657-463-370	
32	Roll Pin	00-671-176-194		94	15-171-331-005	
33	Roll Pin	00-671-176-325		95	15-813-129-004	
34	Roll Pin	00-671-176-383		96	00-673-165-100	
35	Roll Pin	15-671-173-002		97	00-673-165-087	
36	Roll Pin	00-671-171-375		98	18-657-784-007	
37	Washer	18-657-522-303		99	00-615-114-556	
38	Washer	15-171-091-005		100	00-671-176-187	
39	Screw	00-615-245-218		101	71-114-297-001	
40	Lockwasher	00-655-017-022		102	18-657-768-261	
41	Screw	00-611-315-392		103	18-657-822-286	
42	Washer	00-651-007-160		104	71-101-258-504	
43	Lockwasher	00-655-017-026		105	18-657-510-524	
44	Elastic Stop Nut	00-633-025-116		106	15-813-073-001	
45	Jam Nut	00-631-143-104		107	18-657-464-104	
46	Roll Pin	00-671-176-373		108	18-657-523-331	
47	Roll Pin	00-671-171-379		109	71-152-809-026	
48	Spacer	18-657-523-278		110	18-657-523-332	
50	Roll Pin	00-671-176-189		111	00-673-165-075	
51	Ratchet Assembly	18-390-202-501		112	18-657-523-333	
52	Cam Assembly	18-389-061-501		113	18-657-825-150	
53	Cam Assembly	18-389-061-502		114	00-813-119-813	
54	Linkage Assembly (Consists of items 104 to 113)			115	18-723-641-001	
55	Motor & Closing Control	18-390-246-501		116	00-857-036-012	
56	Indicator Assembly	18-723-511-503		117	15-171-323-001	AC
57	Bracket*	18-657-782-273				
58	Pin	18-724-690-003		118	15-171-323-002	DC
60	Solenoid Trip Link Assembly	18-657-770-518				
62	Clevis Pin	15-171-751-001		119	18-657-769-376	
63	Solenoid Closing*	15-171-339-001	48V DC	120	18-657-468-090	
63A		15-171-339-002	125V DC	121	15-171-366-007	
63B		15-171-339-003	250V DC	122	00-615-471-130	
63C		15-171-339-004	120V AC	123	00-655-047-060	
				124	14-147-052-002	
				125	00-617-247-470	
				126	00-631-171-106	
				127	00-655-017-032	

*Give breaker S/N and control voltage when ordering item.

**Must be supplied in pairs.

***Must be supplied as matched set.

ITEM	DESCRIPTION	PART NUMBER	USAGE	ITEM	DESCRIPTION	PART NUMBER	USAGE
128	Switch Motor Cutoff	18-723-742-501	Except 250V DC	133D	Relay, Anti-Pump	15-171-405-002	120V AC
128A	Motor Cutoff Switch	18-724-271-501	250V DC	133E	Relay, Anti-Pump	15-171-405-001	230V AC
129	Screw	00-615-471-124		134	Washer	00-651-007-230	
130	Screw	00-615-485-216		135	Screw	00-651-291-171	
131	Washer	00-655-017-022		136	Nut	00-631-059-106	
132	Washer	00-651-007-907		137	Lockwasher	00-655-017-032	
133	Relay, Anti-Pump	00-871-797-107	125V DC	138	Rd Washer	00-651-007-230	
133A	Relay, Anti-Pump	00-871-797-108	250V DC	139	Screw	00-611-315-470	
133B	Relay, Anti-Pump	00-871-797-109	48V DC	140	Capacitor Trip Device*	71-301-550-502	
133C	Relay, Anti-Pump	00-871-797-115	24V DC				

*Give breaker S/N and control voltage when ordering item.

SIEMENS-ALLIS

Switchgear

P.O. Box 14505

West Allis, Wisconsin 53214