



**PUSHMATIC® NORMAL-DUTY PANELBOARDS**  
SELECTION, APPLICATION, PRICING

**PUSHMATIC BOLTED COLUMN — ASSEMBLED (Breakers Installed)**

**200 AMPERE MAINS**

**240 VOLTS AC      100A MAX. BRANCH**

**PANELBOARDS:** Listed by Underwriters' Laboratories, Inc., under "Panelboards" File #E2269. Meet Federal Specifications W-P-115a dated January 7, 1963, for Type I, Class 1.

**SERVICE:** 240 VOLT AC Maximum. 1 Phase, 2 Wire; 1 Phase, 3 Wire; 3 Phase, 3 Wire; or 3 Phase, 4 Wire.

**MAINS: Main Lug Panels**

Rating Amperes	Connectors Suitable for Cu or Al
100 200	1—#14-#1/0 Awg 1—#6 Awg-250 MCM

**BRANCH BREAKERS:** Pushmatic, 15-50 amperes 1 pole and 15-100 amperes 2 pole, rated 5000 amperes symmetrical Interrupting Capacity. Breakers with 10,000 amperes symmetrical Interrupting Capacity are available on special order. Meet Federal Specifications W-P-115a, Class A or B, and W-C-375a, Class 1a.

**BOXES:** 48" High, 6 3/4" Wide, 6 5/8" Deep.

SEE REVERSE SIDE FOR SELECTION DATA



**PUSHMATIC® NORMAL-DUTY PANELBOARDS**

SELECTION, APPLICATION, PRICING

PUSHMATIC BOLTED COLUMN — ASSEMBLED (Breaker Installed), 200A MAINS MAX.

**1 PHASE, 3 WIRE SN**

120/240 VOLT AC

No. of Poles	Catalog Number	List Price	Ship. Wgt. Lb/Pkg. of 1
<b>MAIN LUG PANELS 100 AMPERE</b>			
8	NPB08-3L	\$123.	57
10	NPB10-3L	136.	58
12	NPB12-3L	149.	58
14	NPB14-3L	162.	59
16	NPB16-3L	175.	59
<b>MAIN LUG PANELS 200 AMPERE</b>			
18	NPB18-3L	187.	65
20	NPB20-3L	201.	65
22	NPB22-3L	214.	66
24	NPB24-3L	227.	66
26	NPB26-3L	247.	72
28	NPB28-3L	260.	72
30	NPB30-3L	262.	73
32	NPB32-3L	286.	73

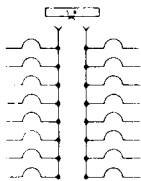
**3 PHASE, 4 WIRE SN**

120/208 VOLT AC

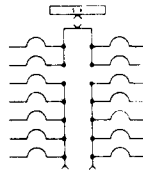
No. of Poles	Catalog Number	List Price	Ship. Wgt. Lb/Pkg. of 1
<b>MAIN LUG PANELS 100 AMPERE</b>			
8	NPB08-4L	\$134.	57
10	NPB10-4L	147.	58
12	NPB12-4L	160.	58
14	NPB14-4L	173.	59
16	NPB16-4L	186.	59
18	NPB18-4L	199.	65
20	NPB20-4L	212.	65
22	NPB22-4L	224.	66
24	NPB24-4L	238.	66
<b>MAIN LUG PANELS 175 AMPERE</b>			
26	NPB26-4L	258.	72
28	NPB28-4L	272.	72
30	NPB30-4L	284.	73
32	NPB32-4L	297.	73

For Column Extensions, Pull Boxes — See Section 4.1.15, Page 1.

TYPICAL WIRING DIAGRAMS



NPB 16-3L



NPB 16-4L