



POSITION SWITCH KIT

For AKR Substructure

Installation Instructions for AKR Substructures and Kits:

AKR Circuit Breakers	Depth	Draw-Out Substructures	Draw-Out Substructure Kits
AKR30H	26 in	TAK3SRH1	TAK3KTH1
AKR30H	33 in	TAK3SRH2	TAK3KTH2
AKR30L	26 in	TAK3SRL1	TAK3KTL1
AKR30L	33 in	TAK3SRL2	TAK3KTL2
AKR50	26 in	TAK5SR01	TAK5KT01
AKR50	33 in	TAK5SR02	TAK5KT02
AKR50H	26 in	TAK5SRH3	TAK5KTH3
AKR50H	33 in	TAK5SRH4	TAK5KTH4
AKRT50H	26 in	TAK6SRH1	TAK6KTH1
AKRT50H	33 in	TAK6SRH2	TAK6KTH2

CAUTION: To avoid electrical hazard, make sure primary and secondary circuits are not energized while working in the compartment.

RATING: 16 AMP-600VAC

CONTACT CONDITION	STAGE 1	STAGE 2	STAGE 3	STAGE 4	STAGE 5	STAGE 6
NC	1-2	5-6	9-10	13-14	17-18	21-22
NO	3-4	7-8	11-12	15-16	19-20	23-24

INSTRUCTIONS

Install the unit as shown in Figure 1 and Figure 3 with three thread forming screws.

Make electrical connections as desired (1/4" wire strip required). The table shows the unactuated switching sequence.

FIGURE 1

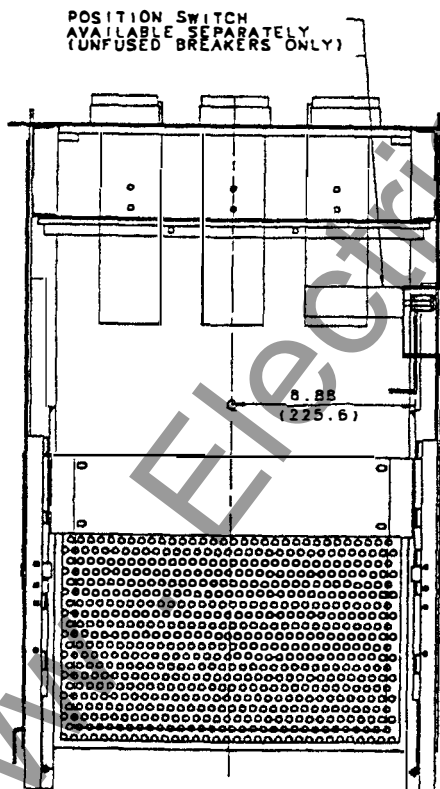


FIGURE 2

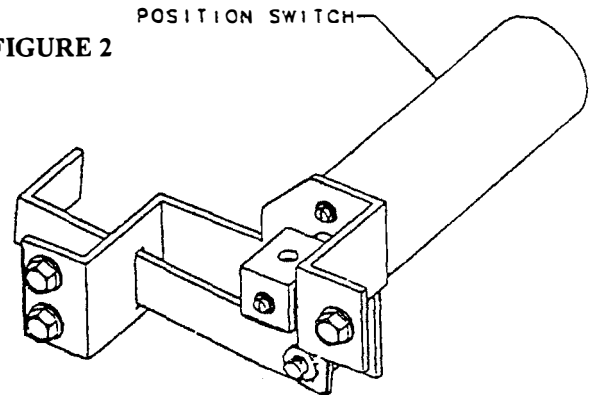
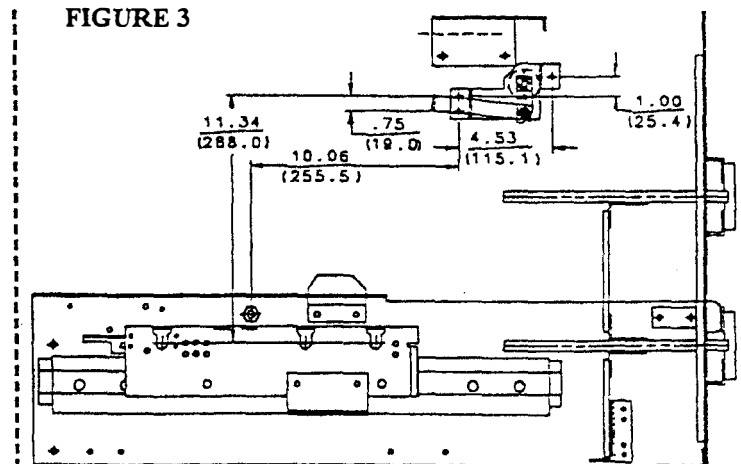


FIGURE 3



These instructions do not purport to cover all details or variations in equipment nor to provide for every possible contingency to be met in connection with installation, operation or maintenance. Should further information be desired or should particular problems arise which are not covered sufficiently for the purchaser's purposes, the matter should be referred to the General Electric Company.

www.ElectricalPartManuals.com