



Power Circuit Breakers

Door Lock Kit for
Substructure Cat. No.
TAK1SR01, TAK1SR02,
TAK1SR01F,
TAK1SR02F

CAUTION: To avoid electrical hazard, make sure primary and secondary circuits are not energized while working in the compartment.

KIT CONTENTS (CAT NO. 343L879G1,2)

The kit shown in Figure 1 contains a door lock assembly, door hook, carriage actuator, and mounting hardware.

343L879G1 is for left latch door.

343L879G2 is for right latch door.

INSTRUCTIONS

The lock is designed to release the door only in the breaker disconnected position, but with the optional defeat slot, a small screwdriver may be used to unhook the lock in other positions.

Add holes to the door as shown in Figure 2 and attach door hook as shown in Figure 3.

Attach lock assembly and carriage actuator as shown in Figure 4.



Figure 1.

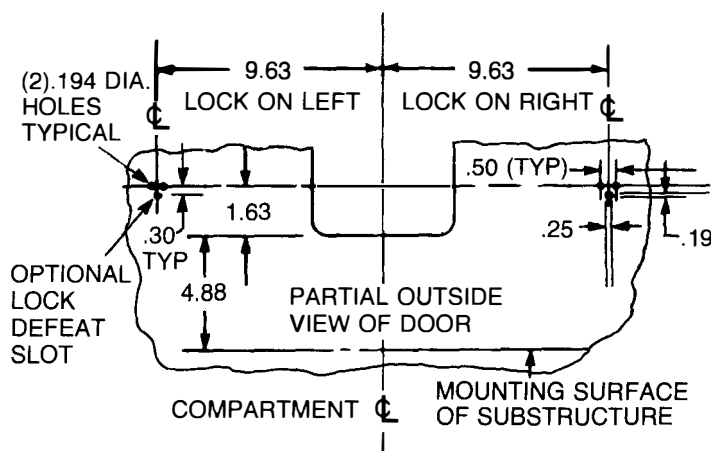


Figure 2.

See back . . .

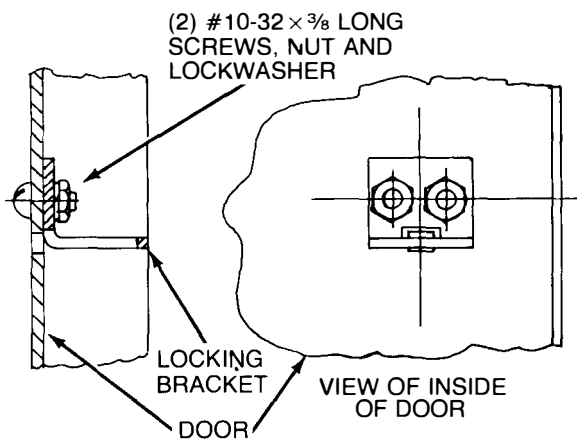


Figure 3.

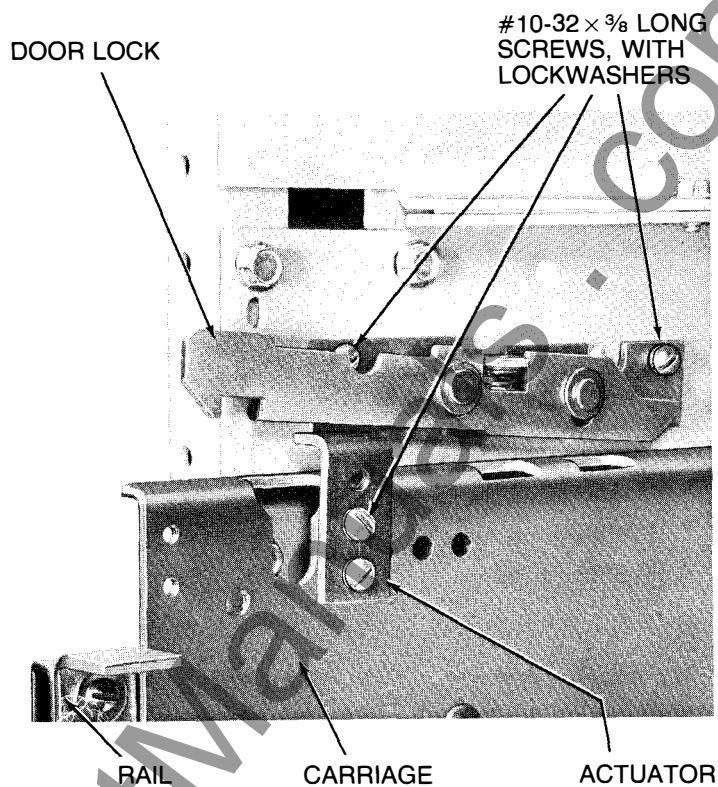


Figure 4.

© 1985 GENERAL ELECTRIC COMPANY

These instructions do not purport to cover all details or variations in equipment nor to provide for every possible contingency to be met in connection with installation operation or maintenance. Should further information be desired or should particular problems arise which are not covered sufficiently for the purchaser's purposes, the matter should be referred to the General Electric Company.

For further information
call or write your local
General Electric
Sales Office or . . .

General Electric
Company
41 Woodford Avenue
Plainville, CT 06062 U.S.A.

Outside the U.S. and Canada write International Trading Operations.
570 Lexington Avenue, New York, NY 10022 U.S.A.

GEH-5031 0185 PSA

GENERAL  **ELECTRIC**