

RENEWAL PARTS

GEF-4435A
Supersedes GEF-4435

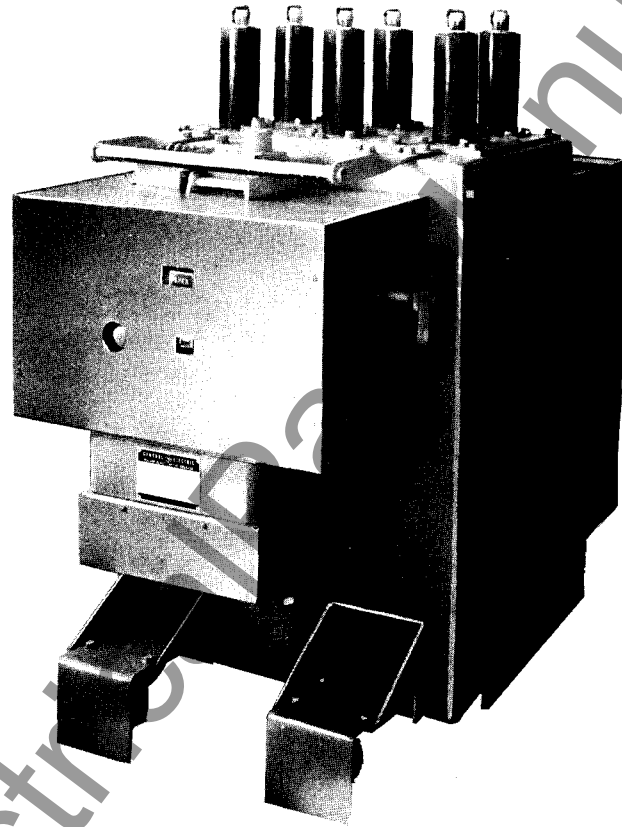
MAGNE-BLAST CIRCUIT BREAKERS

TYPES

AM-7.2-250-4
AM-7.2-500-4

AM-7.2-250-6S
AM-7.2-500-6S

WITH
MS-13 MECHANISM



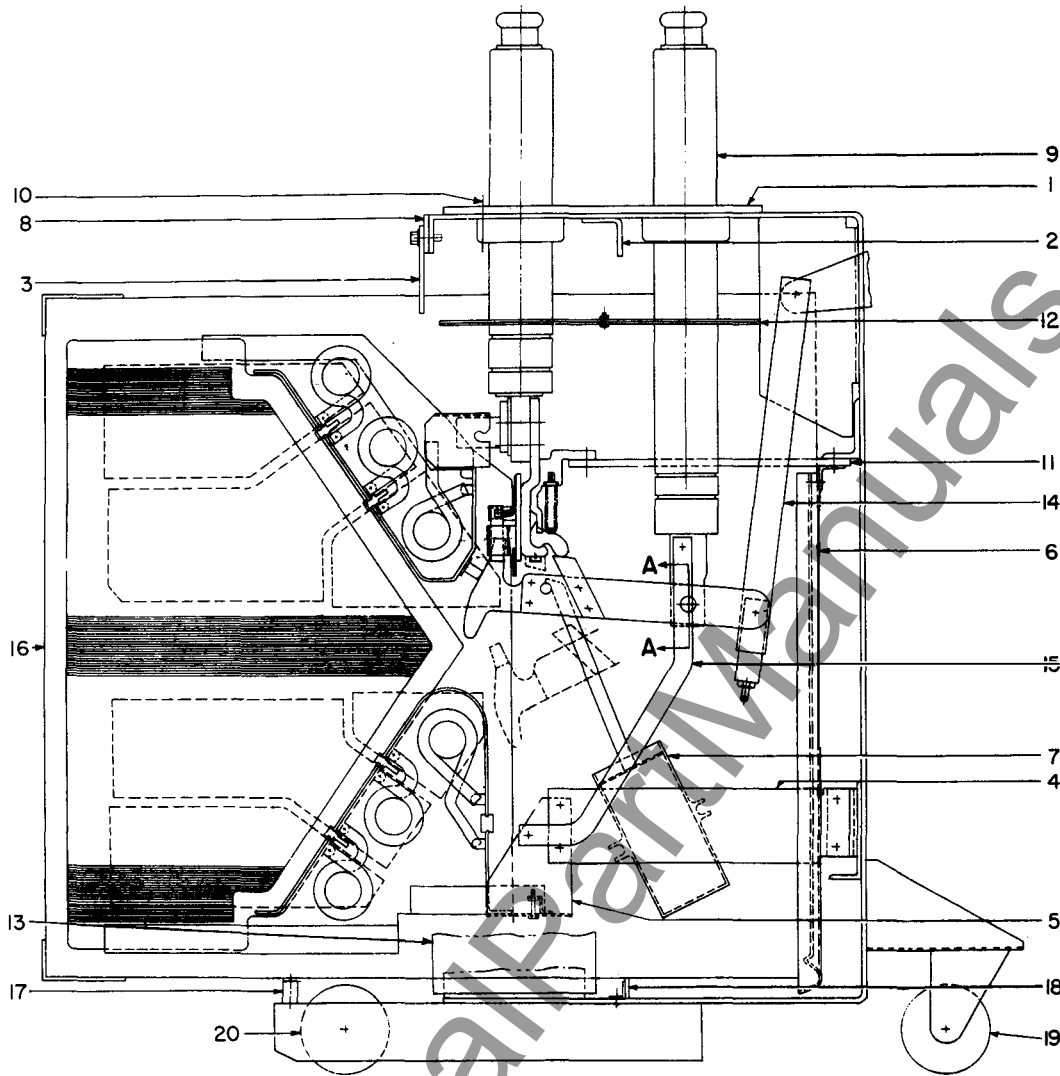
ORDERING INSTRUCTIONS

1. Always specify the complete nameplate data of both the breaker and the mechanism.
2. Specify the quantity, catalog number (if listed), reference number (if listed), and description of each part ordered, and this bulletin number.
3. Standard hardware, such as screws, bolts, nuts, washers, etc., is not listed in this bulletin. Such items should be purchased locally.
4. For prices, refer to the nearest office of the General Electric Company.

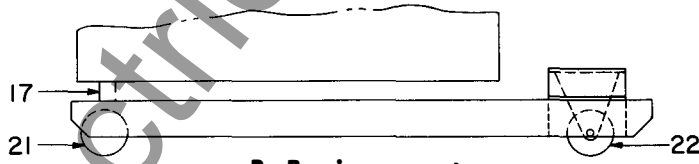
When ordering renewal parts, give quantity, catalog number, description of each item required, and complete nameplate reading.

GENERAL  ELECTRIC

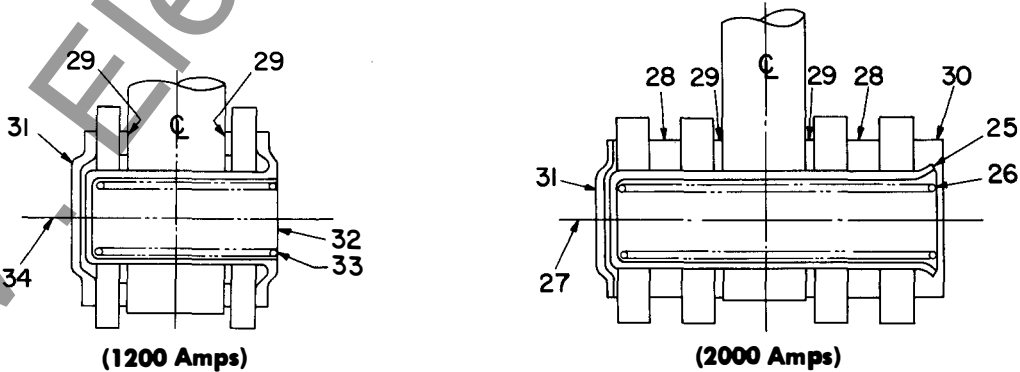
TYPE AM-7.2 MAGNE-BLAST CIRCUIT BREAKERS



A. Breaker, Type AM-7.2-4



B. Barrier support



(1200 Amps)

(2000 Amps)

C. Hinge assembly (see Section A-A)

Fig. 1. Cross section views

TYPE AM-7.2 MAGNE-BLAST CIRCUIT BREAKERS

GEF-4435A

Type AM-7.2 Breaker (Refer to Fig. 1)

Ref. No.	MVA	Amps	Type	Catalog Number for Type AM-7.2		No. Req'd.	Description
				-4	-6S		
1	All	2000	All	733-0258C0680P10	733-0258C0680P10	1	Top plate
2	All	2000	All	0958C0682P009	0958C0682P009	1	Angle
3	All	All	All	0265C0151P028	0265C0151P028	3	Box barrier clip
4	All	All	All	0836C0180P012	- - - - -	3	Arc chute support (right)
4	All	All	All	0836C0180P013	- - - - -	3	Arc chute support (left)
4	All	All	All	- - - - -	0836C0180P014	6	Arc chute support
5	All	All	All	0258C0619G012	0258C0619G012	3	Arc chute clamp
6	All	All	All	0802B0764G001	0802B0764G001	3	Vertical barrier
7	All	All	All	0236B0292P002	0236B0292P002	3	Booster cylinder
8	All	All	All	0265C0151P030	0265C0151P030	**	Shim
9	All	1200	All	0845D0123G003	0845D0123G003	3	Bushing, long
9	All	2000	All	0958C0683G003	0958C0683G003	3	Bushing, long
10	All	All	All	0958C0628P005	0958C0628P005	**	Shim, 0.004 in. thick
10	All	All	All	0958C0628P006	0958C0628P006	**	Shim, 0.010 in. thick
11	250	1200	A, H	0688C0586P020	- - - - -	6	Horizontal barrier (lower)
11	500	1200	A, H	0688C0586P021	- - - - -	6	Horizontal barrier (lower)
11	All	1200	All	- - - - -	0132C2738P004	6	Horizontal barrier (lower)
11	All	2000	All	0688C0586P013	0132C2738P005	6	Horizontal barrier (lower)
12	All	1200	All	0137A6047G003	- - - - -	3	Horizontal barrier (upper)
12	All	1200	All	- - - - -	0258C0614P031	6	Horizontal barrier (upper)
12	All	2000	All	0137A6047G005	- - - - -	3	Horizontal barrier (upper)
12	All	2000	All	- - - - -	0258C0614P032	6	Horizontal barrier (upper)
13	All	All	All	0265C0162P017	0265C0162P017	2	Side barrier
14	All	All	All	0281B0708G001	0281B0708G001	3	Operating rod assembly
15	All	All	All	0688C0589P017	0688C0589P017	3	Connection bar
16	250	All	All	0265C0176G002	- - - - -	3	Box barrier assembly
16	500	All	All	0265C0176G001	- - - - -	3	Box barrier assembly
16	All	All	All	- - - - -	0265C0176G005	3	Box barrier assembly
17	All	All	All	0107B9348P007	0107B9348P007	1	Box barrier support
17	Ø	Ø	Ø	0107B9348P005	0107B9348P005	1	Box barrier support
18	All	All	All	0107B9348P002	0107B9348P002	1	Box barrier support
19	All	All	All	0456A0862P008	0456A0862P008	2	Front wheel and caster
20	All	All	All	0456A0862P001	0456A0862P001	2	Wheel and spanner bushing
21	Ø	Ø	Ø	006597296P007	006597296P007	2	Wheel
22	Ø	Ø	Ø	0236C0768G007	0236C0768G007	2	Front wheel and caster
*23	All	2000	All	0898B0282G007	0898B0282G007	3	Hinge point assembly
*23	All	2000	RA, RH	0898B0282G002	0898B0282G002	3	Hinge point assembly
*24	All	1200	A, H	0898B0282G006	0898B0282G006	3	Hinge point assembly
*24	All	1200	RA, RH	0898B0282G001	0898B0282G001	3	Hinge point assembly
25	All	2000	All	006442257P001	006442257P001	3	Bearing
26	All	2000	All	0369A0407P001	0369A0407P001	3	Spring
27	All	2000	All	0414A0106P007	0414A0106P007	3	Bolt
28	All	2000	All	006442246P001	006442246P001	6	Spacer
29	All	All	A, H	0104A2495P001	0104A2495P001	6	Hinge washer
29	All	All	RA, RH	0456A0884P001	0456A0884P001	6	Hinge washer
30	All	2000	All	006441630P001	006441620P000	3	Washer
31	All	All	All	006441617P001	006441617P001	3	Washer
32	All	1200	A, H	0137A9186P001	0137A9186P001	3	Bearing
33	All	1200	A, H	0421A0239P001	0421A0239P001	3	Spring
34	All	1200	A, H	0414A0106P004	0414A0106P004	3	Bearing screw

Ø Breaker model list with "W" suffix.

** As required.

* This assembly includes parts 25 to 34 inclusive.

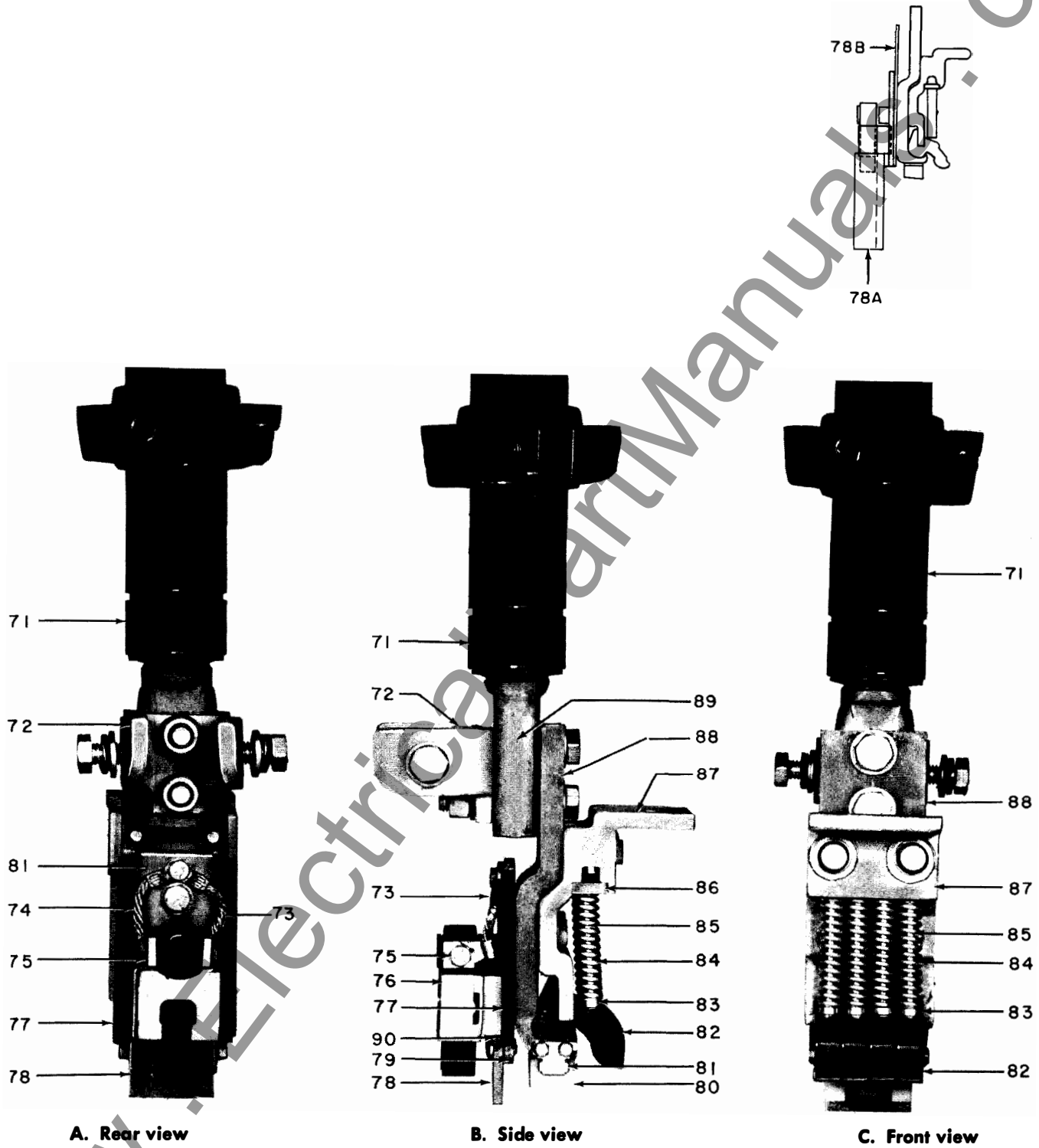


Fig. 2. Rear bushing assembly (Ref. No. 70)

TYPE AM-7.2 MAGNE-BLAST CIRCUIT BREAKERS

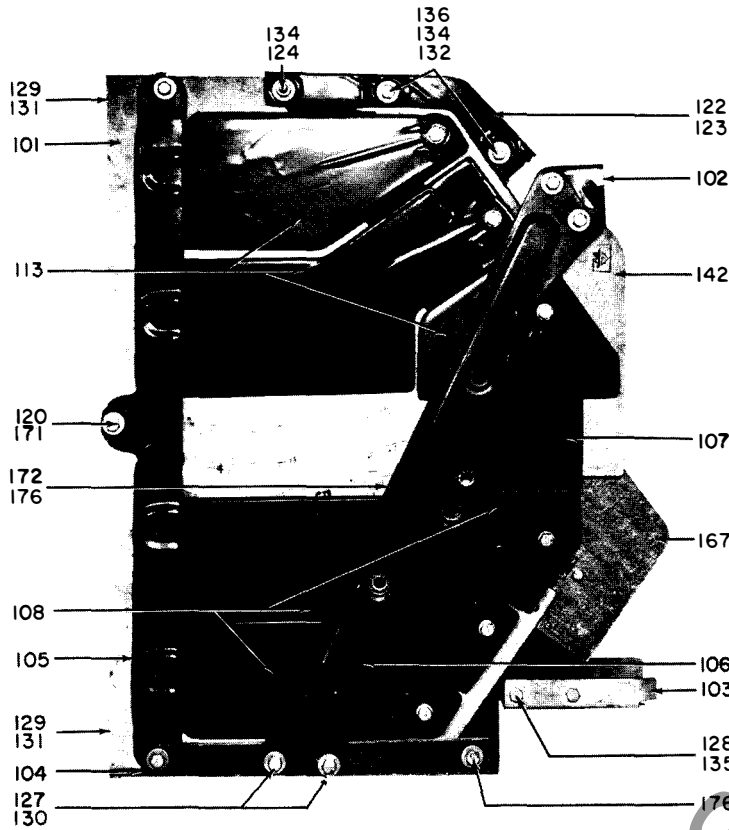
GEF-4435A

Rear Bushing Assembly (Refer to Fig. 2)

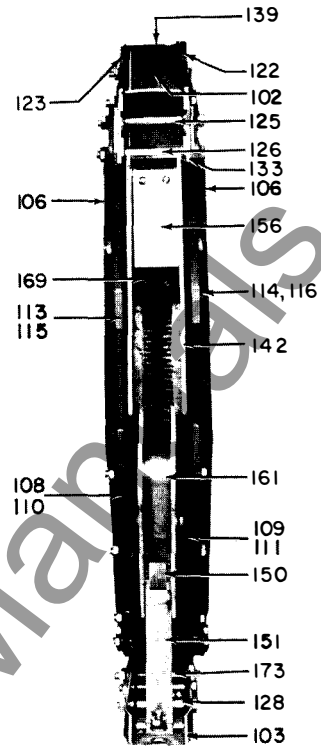
Ref. No.	MVA Rating	Ampere Rating	Catalog Number for Type AM-7.2		No. Req'd.	Description
			-4	-6S		
70	250	1200	733-0236C0790G094	- - - - -	3	Rear bushing assembly
70	500	1200	0236C0790G095	- - - - -	3	Rear bushing assembly
70	All	1200	- - - - -	733-0213X0344G039	3	Rear bushing assembly
70	All	2000	0236C0790G092	0213X0344G040	3	Rear bushing assembly
71	All	1200	0958C0684G001	0845D0124G003	3	Bushing
71	All	2000	0958C0684G003	0958C0684G005	3	Bushing
72	All	1200	0619C0443P017	0619C0443P017	3	A/C support
72	All	2000	0236C0791G019	0619C0443P007	3	A/C support
73	All	All	0236C0791G001	- - - - -	3	Flexible connector (left)
73	All	All	- - - - -	0208A8017G001	3	Flexible connector (left, long)
73	All	All	- - - - -	0208A8017G003	3	Flexible connector (left, short)
74	All	All	0236C0791G004	- - - - -	3	Flexible connector (right)
74	All	All	- - - - -	0208A8017G002	3	Flexible connector (right, long)
74	All	All	- - - - -	0208A8017G004	3	Flexible connector (right, short)
75	All	All	0175V0557P001	- - - - -	6	Locking plate
75	All	All	- - - - -	0175V0557P001	12	Locking plate
76	All	All	0236C0790G009	0213X0344G032	3	Arcing contact assembly
77	All	All	0265C0151P025	- - - - -	3	Baffle
78	All	All	0414A0116P086	- - - - -	3	Insulating plate
78A	All	All	- - - - -	0208A8016G001	3	Throat barrier assembly
78B	All	1200	- - - - -	0132C2722P005	3	Baffle
78B	All	2000	- - - - -	0132C2722P004	3	Baffle
79	All	All	0236C0791G003	0132C2721G005	3	Arcing contact support
80	All	All	006445087P004	006445087P004	3	Buffer
81	250	1200	006557243P001	- - - - -	6	Clamp for buffer
81	500	1200	006557243P002	- - - - -	6	Clamp for buffer
81	All	2000	006557243P002	- - - - -	6	Clamp for buffer
81	All	All	- - - - -	006557243P002	6	Clamp for buffer
82	250	1200	0114C5382P002	- - - - -	12	Primary contact finger
82	500	1200	0114C5382P002	- - - - -	18	Primary contact finger
82	All	2000	0114C5382P002	- - - - -	24	Primary contact finger
82	All	All	- - - - -	0114C5382P002	18	Primary contact finger
83	250	1200	006176109P006	- - - - -	12	Spacer for spring guide
83	All	All	- - - - -	006176109P006	18	Spacer for spring guide
84	250	1200	0121A5964P001	- - - - -	12	Primary contact finger spring
84	500	1200	0414A0180P001	- - - - -	18	Primary contact finger spring
84	All	2000	006509787P001	- - - - -	24	Primary contact finger spring
84	All	All	- - - - -	0121A5964P001	18	Primary contact finger spring
85	250	1200	0236C0790P114	- - - - -	12	Spring guide
85	500	1200	0236C0790P114	- - - - -	18	Spring guide
85	All	2000	0236C0790P014	- - - - -	24	Spring guide
85	All	All	- - - - -	N312P2542B	18	Spring guide
86	250	1200	0828C0782P004	- - - - -	3	Spring retainer
86	500	1200	0962C0778P007	- - - - -	3	Spring retainer
86	All	2000	0828C0782P005	- - - - -	3	Spring retainer
86	All	All	- - - - -	0962C0778P007	3	Spring retainer
87	250	1200	0828C0782P013	- - - - -	3	Contact finger retainer
87	500	1200	0962C0778P002	- - - - -	3	Contact finger retainer
87	All	2000	0828C0782P008	- - - - -	3	Contact finger retainer
87	All	All	- - - - -	0962C0778P002	3	Contact finger retainer
88	250	1200	0258C0666P009	- - - - -	3	Contact support
88	500	1200	0962C0778P011	- - - - -	3	Contact support
88	All	2000	0258C0666P002	- - - - -	3	Contact support
88	All	All	- - - - -	0962C0778P011	3	Contact support
89	All	All	006591783P001	- - - - -	3	Jumper for bushing
90	All	All	0269C0853P022	- - - - -	3	Fibre washer

WWW.ELECTRICALMANUS.COM

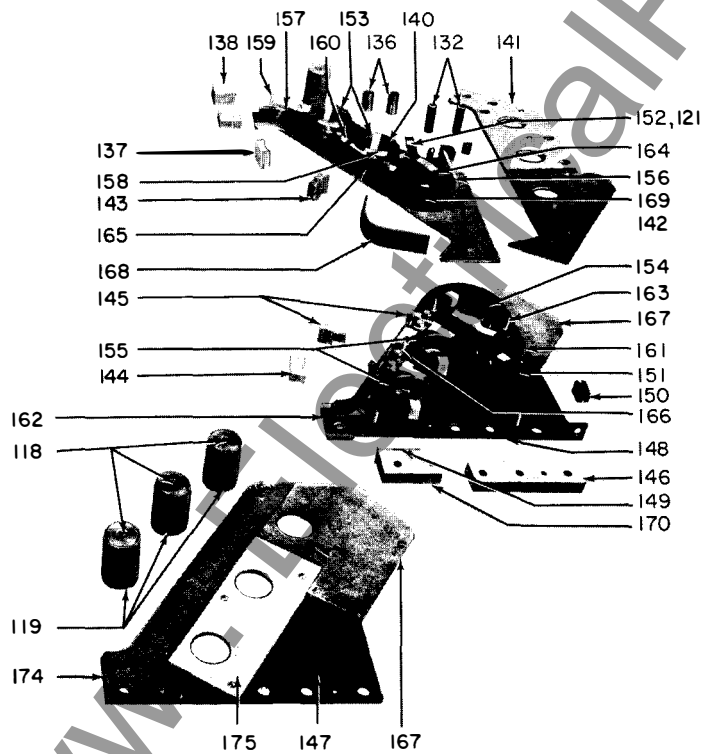
TYPE AM-7.2 MAGNE-BLAST CIRCUIT BREAKERS



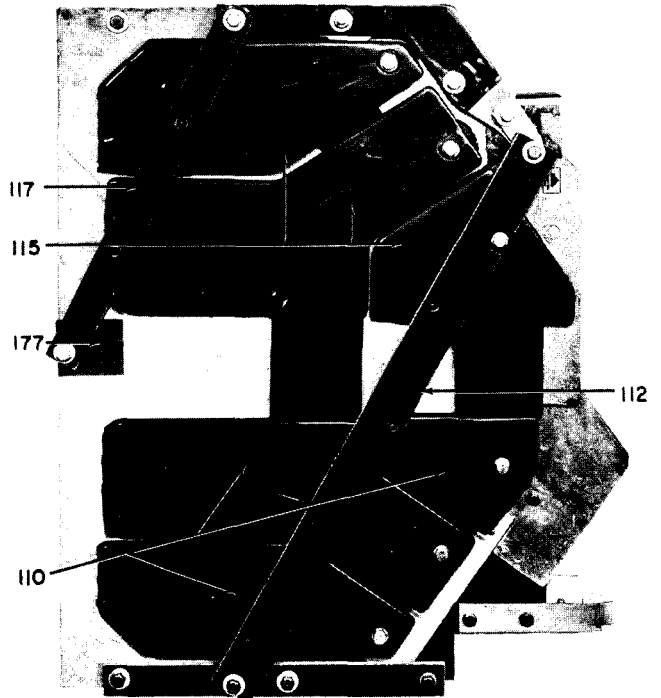
A. Complete arc chute assembly (Ref. No. 100)



B. Front view

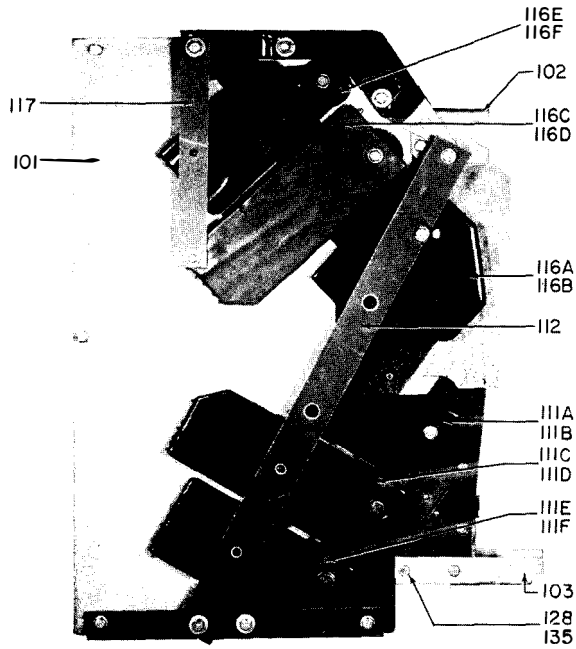


C. Component parts

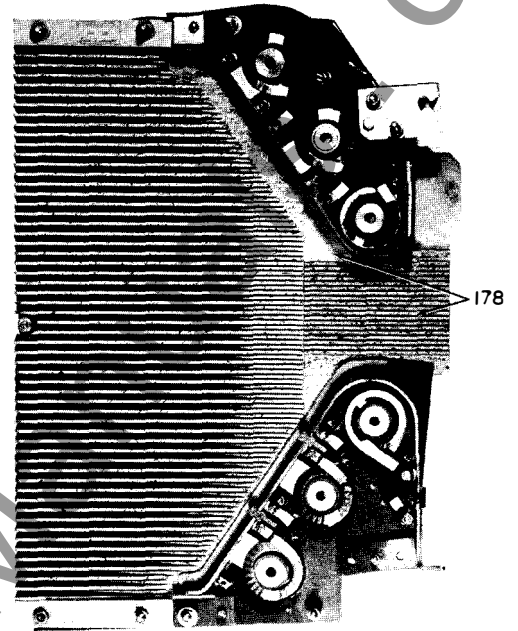


D. Complete arc chute assembly (different pole pieces and braces)

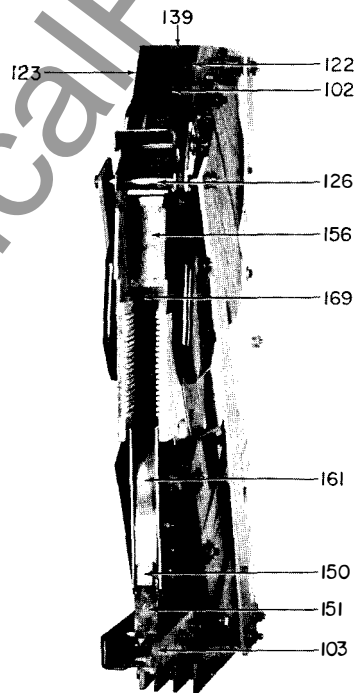
Fig. 3. Arc chute



E. Complete arc chute assembly
("-6S" design)



F. Side cover removed
("-6S" design)



G. Front view
("-6S" design)

Fig. 3. Arc chute (cont'd.)

TYPE AM-7.2 MAGNE-BLAST CIRCUIT BREAKERS

ARC CHUTE ASSEMBLY (Refer to Fig. 3)

Ref. No.	Cat. No. for Type AM-7.2		No. Req'd.	Description
	-4	-6S		
100	733-0213X0215G009	733-0213X0215G012	3	Arc chute assembly complete
101	0264B0100G014	0264B100G017	3	Arc chute sides
102	0265C0150P002	0132C2721P001	3	Upper support
103	0258C0615P015	0132C2721G002	3	Lower support
104	0265C0161P006	0265C0161P006	6	Lower brace
∅105	0114C5495G002	0114C5495G003	3	Rear brace
∅106	0114C5495G004	0114C5495G004	3	Side brace
107	0962C0750P--6	-----	6	Shield
∅108	0962C0701G004	-----	3	Lower pole pieces, left
∅109	0962C0701G005	-----	3	Lower pole pieces, right
∅110	0114C5304G004	-----	3	Lower pole pieces, left
∅111	0114C5304G005	-----	3	Lower pole pieces, right
111A	-----	0132A2736G007	3	Lower pole pieces, left
111B	-----	0132A2736G008	3	Lower pole pieces, right
111C	-----	0132A2736G009	3	Lower pole pieces, left
111D	-----	0132A2736G010	3	Lower pole pieces, left
111E	-----	0132A2736G011	3	Lower pole pieces, left
111F	-----	0132A2736G012	3	Lower pole pieces, right
∅112	0108B1943P001	0132C2738P001	6	Side brace
113	0962C0701G002	-----	3	Upper pole pieces, left
114	0962C0701G003	-----	3	Upper pole pieces, right
115	0114C5304G002	-----	3	Upper pole pieces, left
116	0114C5304G003	-----	3	Upper pole pieces, right
116A	-----	0132C2736G001	3	Upper pole pieces, left
116B	-----	0132C2736G002	3	Upper pole pieces, right
116C	-----	0132C2736G003	3	Upper pole pieces, left
116D	-----	0132C2736G004	3	Upper pole pieces, right
116E	-----	0132C2736G005	3	Upper pole pieces, left
116F	-----	0132C2736G006	3	Upper pole pieces, right
117	0108B1943P002	0132C2738P002	6	Rear brace
118	0688C0589P013	-----	18	Core
118	-----	0258C0615P019	3	Core, 2 11/16 in.
118	-----	0258C0615P035	3	Core, 3 3/16 in.
119	0688C0589P014	-----	18	Core insulating tube
119	-----	0258C0616P023	3	Core insulating tube for 2 11/16-in. core
119	-----	0258C0616P026	3	Core insulating tube for 3 3/16-in. core
120	006445050P010	006445050P010	3	Spacer
121	0619C0400P017	-----	3	Spacer
122	0962C0750P010	0962C0750P010	3	A/C support, right
123	0962C0750P009	0962C0750P009	3	A/C support, left
124	0414A0102P008	0414A0102P008	3	Stud
126	0421A0209P082	0421A0209P082	6	Spacer
127	0061676109P070	-----	12	Spacer
128	0421A0208P093	0421A0208P093	12	Spacer (7/8 in.)
*129	0619C0494P009	0619C0494P009	#	Shim
130	006442389P003	006176109P070	6	Spacer (5/32 in.)
*131	006442389P004	-----	6	Spacer
132	0456A0888P006	0456A0888P006	6	Spacer
133	0688C0589P018	-----	6	Spacer
134	0137A9163P002	0137A9163P002	18	Bushing
135	006176109P089	006176109P089	3	Spacer (3/4 in.)
136	0421A0208P497	0421A0208P497	6	Spacer (1 1/2 in.)
137	0265C0150P015	0265C0150P015	6	Spacer
138	0962C0750P003	0962C0750P003	3	Block
139	0962C0750P002	0962C0750P002	3	Dust shield
140	0265C0163P008	0265C0163P008	6	Upper coil support
141	0265C0163P002	0265C0163P009	6	Barrier
142	0414A0194P002	-----	6	Mycalex, upper shield
143	0414A0196P001	0414A0196P001	6	Spacer
144	0265C0150P013	0265C0150P013	6	Spacer
145	0414A0196P002	0414A0196P002	6	Spacer
146	0962C0750P007	0962C0750P007	3	Spacer

∅ Refer to Fig. 3A and 3D to determine proper arrangement for side brace, rear brace, and pole pieces.

As required

* Not illustrated

TYPE AM-7.2 MAGNE-BLAST CIRCUIT BREAKERS

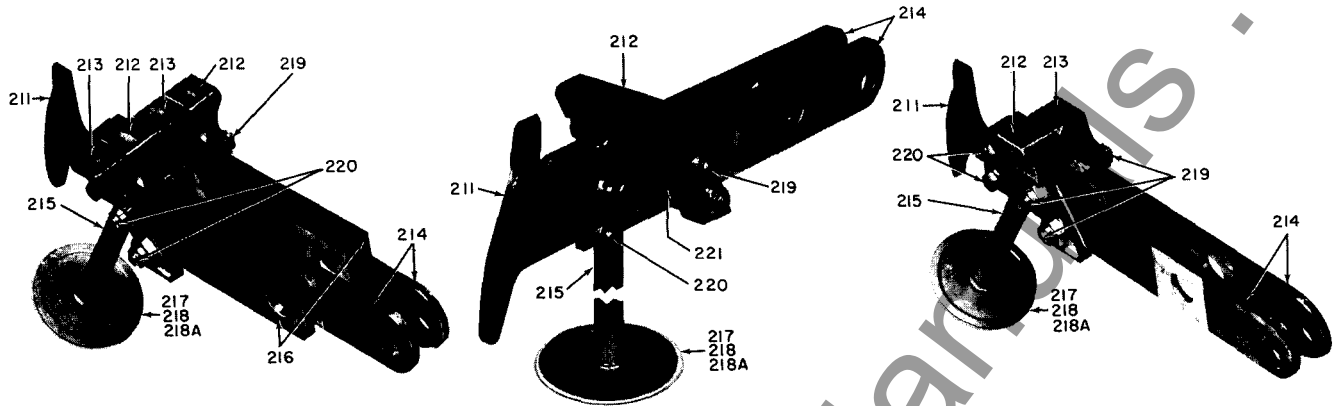
GEF-4435A

ARC CHUTE ASSEMBLY (Refer to Fig. 3) (Cont'd)

Ref. No.	Cat. No. for Type AM-7.2		No. Req'd.	Description
	-4	-6S		
147	733- 0619C0489P005	733- 0619C0489P005	3	Lower coil support, left
148	0619C0489P006	0132C2745P010	3	Lower coil support, right
149	0414A0198P001	0132C2745P011	3	Insulation seal
150	0258C0616P011	0258C0616P011	3	Spacer
151	0265C0150G006	0132C2746G002	3	Runner
152	0619C0400G001	0132C2728G01	3	Coil, upper
153	0265C0155G003	-----	6	Coil, upper
153	-----	0265C0155G003	3	Coil, upper
153	-----	0265C0155G009	3	Coil, upper
154	0265C0155G008	0269C0878G002	3	Coil, lower
155	0265C0154G006	0265C0154G006	6	Coil, lower
156	0414A0116P002	0108B5520P001	3	Insulation plate
157	0414A0197P001	0414A0197P001	3	Shim
158	0414A0197P002	0414A0197P002	3	Shim
159	0265C0154G003	0265C0154G003	3	Runner assembly
160	0265C0154G005	0132C2708P009	6	Runner assembly
161	0265C0154G001	0132C2746G001	3	Runner assembly
162	0265C0154G009	0265C0154G009	3	Runner assembly
163	0456A0888P003	0456A0888P003	9	Spacer (3/4 in. long)
164	0421A0208P022	0421A0208P022	12	Spacer (21/32 in. long)
165	0421A0208P017	0421A0208P017	24	Spacer (17/32 in. long)
166	006176109P006	006176109P006	36	Spacer (5/32 in. long)
167	0456A0336P001	0456A0891P210	6	Lower runner barrier
168	0456A0891P210	0456A0891P020	3	Sleeve
169	0688C0512G003	0132C2708G002	3	Runner
170	0265C0161P017	0265C0161P017	3	Spacer
171	0414A0131P004	0414A0131P004	#	Spacer
*172	0456A0891P208	0456A0891P208	#	Shim
173	006176109P094	-----	6	Spacer
174	0421A0201P001	0421A0201P001	6	Lower runner shield
175	0802B0735P001	0802B0735P004	6	Lower runner insulation
*176	0456A0891P103	-----	#	Shim (3/16 in. thick)
177	0108B1943P003	-----	6	Spacer
178	-----	0132C2737G003	3	Shield and cooler assembly, right
178	-----	0132C2737G004	3	Shield and cooler assembly, left

*Not illustrated

TYPE AM-7.2 MAGNE-BLAST CIRCUIT BREAKERS



A. 2000 amp, all MVA ratings B. 1200 amp, 500H and 500A MVA ratings C. 1200 amp, 150H, 250H, 150A, 250A MVA ratings

Fig. 4. Movable contact arm assembly (Ref. No. 210)

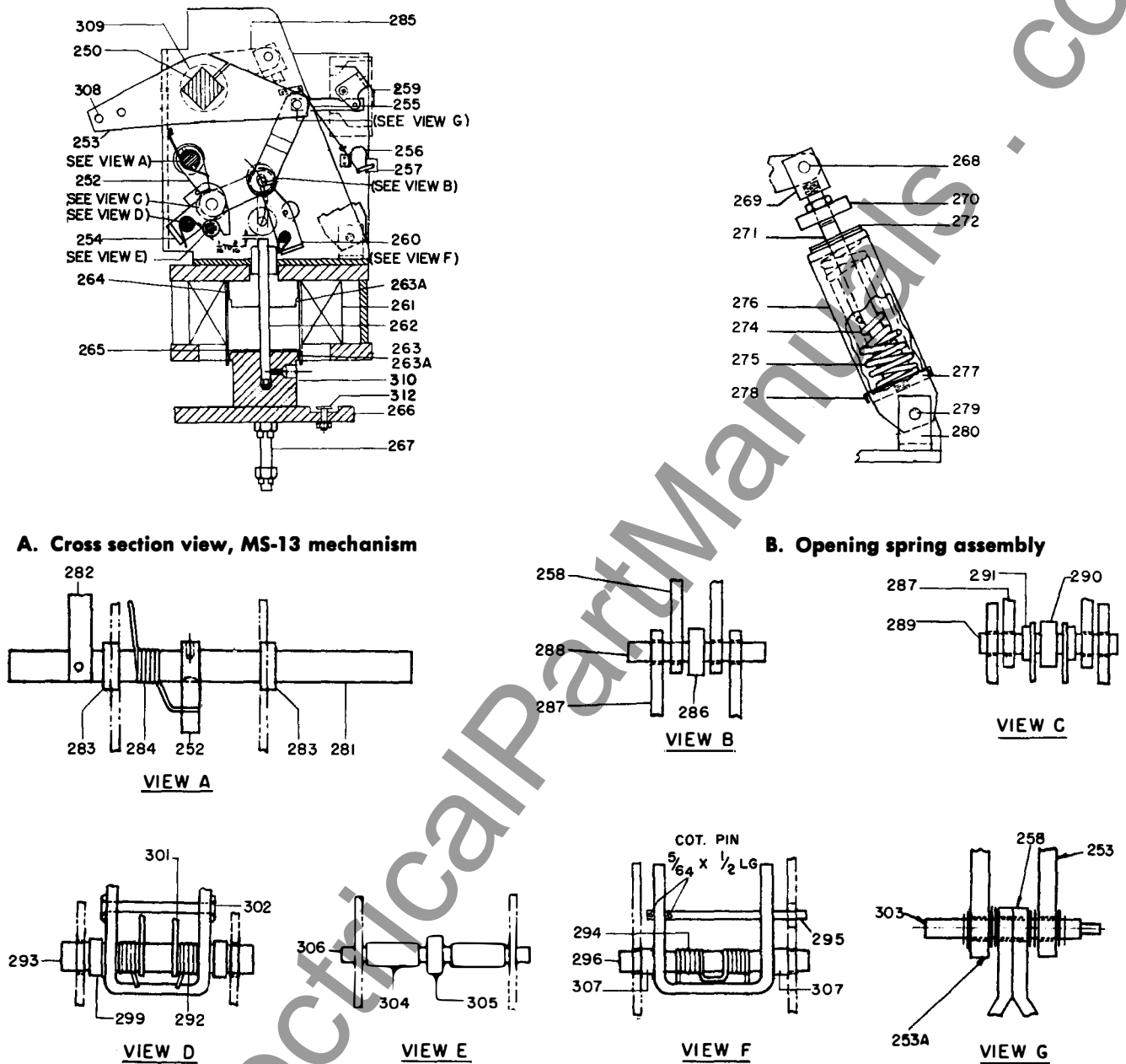
Movable Contact Arm Assembly (Refer to Fig. 4)

Ref. No.	MVA	Amps	Catalog Number for Type AM-7.2		No. Req'd.	Description
			-4	-6S		
210	250	1200	733-0236C0792G096	733-0213X0343G064	3	Movable contact arm assembly
210	500	1200	0236C0792G099	0213X0343G064	3	Movable contact arm assembly
210	250	2000	0236C0972G091	0213X0343G065	3	Movable contact arm assembly
210	500	2000	0236C0972G101	0213X0343G065	3	Movable contact arm assembly
211	250	All	0802B0742G003	0108B5536G001	3	Movable arcing contact
211	500	All	0802B0742G004	0108B5536G001	3	Movable arcing contact
212	250	1200	0137A9164P003	- - - - -	3	Movable primary contact
212	500	1200	0114C5382P004	- - - - -	6	Movable primary contact
212	All	1200	- - - - -	0114C5382P004	6	Movable primary contact
212	All	2000	0137A9164P003	0114C5382P004	6	Movable primary contact
213	250	1200	0137A9164P004	- - - - -	3	Movable primary contact
213	All	2000	0137A9164P004	0114C5382P004	3	Movable primary contact
214	All	All	0258C0666P007	0258C0666P007	6	Contact arm
215	250	1200	0236C0792G031	0213X0343G094	3	Tube and piston assembly
215	500	1200	0236C0792G015	0213X0343G094	3	Tube and piston assembly
215	All	2000	0236C0792G015	0213X0343G094	3	Tube and piston assembly
216	All	2000	0258C0666P006	0258C0666P006	6	Contact arm
217	All	All	0421A0248P001	0421A0248P001	3	Piston ring
218	All	All	0456A0874P003	0456A0874P003	3	Piston ring expander (corrugated)
218A	250	1200	0456A0874P002	- - - - -	3	Piston ring equalizer (smooth)
218A	500	1200	0456A0874P002	- - - - -	3	Piston ring equalizer (smooth)
218A	All	2000	0456A0874P002	- - - - -	6	Piston ring equalizer (smooth)
218A	All	All	- - - - -	0456A0874P002	6	Piston ring equalizer (smooth)
219	All	All	0414A0146P054	0414A0146P054	12	Flex nut (1/2-13)
220	All	All	0414A0146P053	0414A0146P053	6	Flex nut (3/8-16)
*221	500	1200	0258C0619P002	- - - - -	6	Spacer

*Not required with movable primary contact Cat. No. 0114C5382P004.

TYPE AM-7.2 MAGNE-BLAST CIRCUIT BREAKERS

GEF-4435A



A. Cross section view, MS-13 mechanism

B. Opening spring assembly

C. Detailed view, MS-13 mechanism

Fig. 5. MS-13 mechanism

MS-13 Mechanism (Refer to Fig. 5)

Ref. No.	Cat. No.	No. Per Mechanism	Description
250	733-006443518P001	1	Shaft
251	0836C0190P003	4	Crank, phase 1 and 3
252	0258C0608P007	1	Latch
253	0215D0470G058	1	Crank, phase 2
253A	0215D0470G060	1	Crank, phase 2
254	0215D0470G055	1	Link
255	006551742P001	1	Spring
256	0258C0604P008	1	Spring clip
257	0137A9088P001	1	Veeder counter

TYPE AM-7.2 MAGNE-BLAST CIRCUIT BREAKERS

MS-13 Mechanism (Refer to Fig. 5 (cont'd))

Ref No.	Cat. No.	No. Per Mechanism	Description
258	733-0215D0470G057	1	Link
259	0281B0711G001	1	Indicator assembly
260	0258C0609P001	1	Prop
261	006375521G004	1	Closing coil (110v d-c) 250A and 250H
261	0802B0799G001	1	Closing coil (125v d-c, 230v a-c) 250A and 250H
261	0802B0799G003	1	Closing coil (250v d-c) 250A and 250H
261	006375522G002	1	Closing coil (250v d-c) 500H
261	006375522G001	1	Closing coil (125v d-c, 230v a-c) 500H
261	006375522G004	1	Closing coil (125v d-c, 230v a-c) 500A
261	006375522G003	1	Closing coil (125v d-c) 500A
262	0236C0796P006	1	Plunger, 500A and 500H
262	0236C0796P006	1	Plunger, 500A, 500H
264	0962C0700G002	1	Pole piece, 250A, 250H
264	0962C0700G012	1	Pole piece, 500A, 500H
265	△	1	Buffer
266	0236C0796G002	1	Armature plate
267	0236C0796P028	2	Stud, 250A and 250H
267	0236C0796P008	2	Stud, 500A and 500H
268	0137A6086P022	1	Pin
269	0258C0630P007	1	Clevis
270	0258C0630P031	1	Plate
271	0258C0630P008	1	Rod
272	0414A0109P008	1	Buffer
273	0258C0630G001	1	Complete spring assembly
274	0456A0808	1	Inner spring
275	0456A0807	1	Outer spring
276	0258C0630P003	1	Spring retainer
277	0258C0630P005	1	Retaining plate
278	0258C0630G004	1	Spring base
279	0137A6087P020	1	Pin
280	0258C0630P002	1	Bracket
281	0258C0611P001	1	Latch shaft (250H and 500H)
281	0258C0611P002	1	Latch shaft (250A and 500A)
282	0258C0611P011	1	Stop bar
283	0121A7436G001	2	Latch shaft bearing
284	0421A0256	1	Spring
285	0258C0609P004	1	Crank
286	0215D0470G053	1	Roller
287	0215D0470G052	2	Link
288	0258C0611P003	1	Prop pin
289	0414A0110P001	1	Pin
290	0414A0112P001	1	Trip roller bearing
291	0456A0876P103	2	Spacer
292	006509799	2	Spring
293	0414A0110P003	1	Pin
294	006477097	1	Prop spring
295	0258C0609P008	1	Trip roller pin
296	0104A2474P001	1	Pin
299	0421A0210P001	2	Spacer
301	0258C0608P003	1	Latch guide
302	0258C0611P005	1	Pin
303	0958C0697P004	1	Pin
304	0421A0209P101	2	Spacer
305	0258C0609P006	1	Roller
306	0137A6086P039	1	Pin
307	0421A0208P143	2	Spacer
308	0619C0478P019	3	Pin
309	006442239P001	2	Bearing, 250A and 250H
309	006442239P003	2	Bearing, 500A and 500H
310	0236C0796P026	1	Armature
*311	0258C0611P015	1	Cover for opening spring, 250A and 500A
312	0236C0795P075	1	Adjusting screw

△Order 0414A0109P010 for 2-1/2 inch O. D. buffer

Order 0414A0109P012 for 3-3/4 inch O. D. buffer

* Not illustrated.

TYPE AM-7.2 MAGNE-BLAST CIRCUIT BREAKERS

GEF-4485A

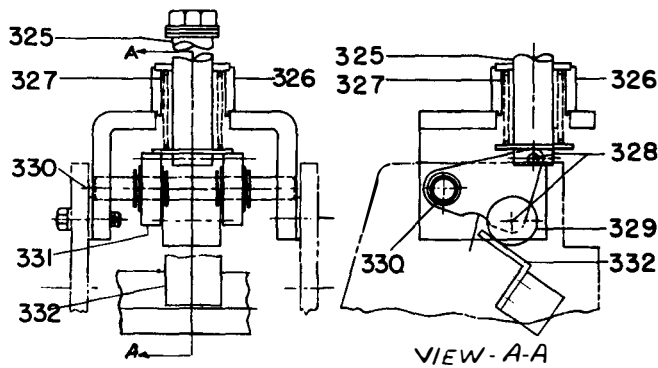
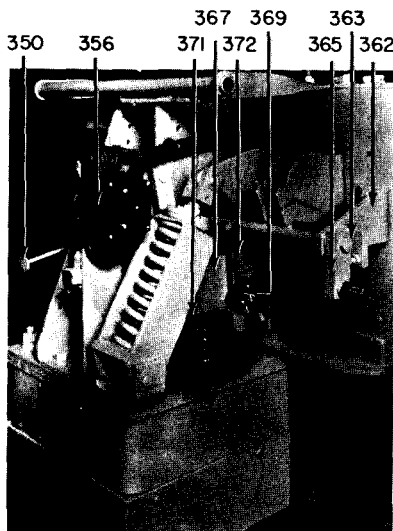


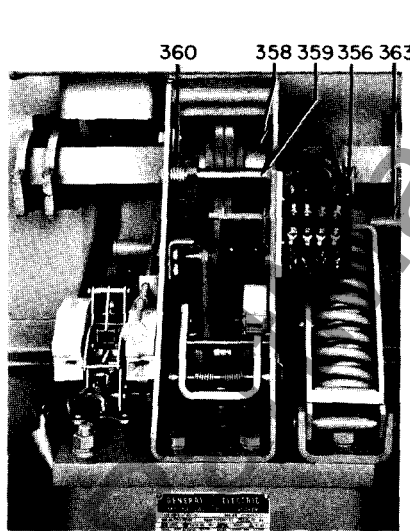
Fig. 6. Interlock plunger for MS-13 mechanism

Interlock Plunger (Refer to Fig. 6)

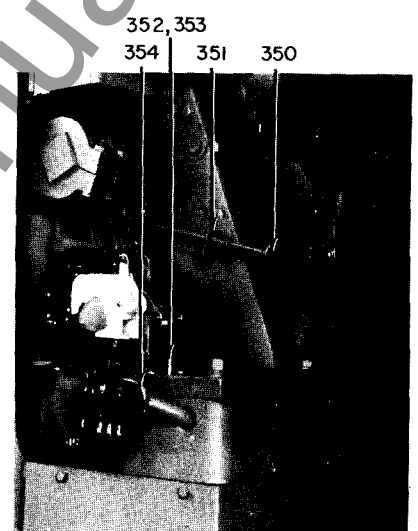
Ref. No.	Cat. No.	No. Reqd.	Description
324	733-0236C0787G001	1	Interlock plunger, complete
325	0236C0787P012	1	Plunger
326	0236C0787G002	1	Bracket
327	006509728P001	1	Spring
328	0137A6085P022	2	Pin
329	0236C0787P014	1	Roller
330	0236C0787P005	1	Pin
331	0236C0787P016	2	Crank
332	0958C0697P003	1	Crank



A. Right side view



B. Front view



C. Left side view

Fig. 7. MS-13 mechanism

MS-13 Mechanism (Refer to Fig. 7)

Ref. No.	Cat. No.	No. Per Mechanism	Description
350	733-0258C0604G003	1	Manual trip rod
351	0258C0604P002	1	Manual trip rod support
352	0236C0795P040	1	Rod, 250A and 250H
352	0236C0795P041	1	Rod, 500A and 500H
353	0174V0394P003	1	Tube, 250A and 250H
353	0174V0394P004	1	Tube, 500A and 500H
354	006445059	1	Insulating tube
356	Δ	1	Auxiliary switch
358	0456A0876P004	2	Spacer
359	0236C0788G050	1	Interlock prop assembly
360	0137A9128	1	Spring
362	0258C0601G003	1	Bearing, bracket
363	0236C0788G052	1	Roller and link assembly
*364	0236C0788P008	2	Link
365	0236C0788G054	1	Roller assembly
367	0236C0788P034	1	Bracket
369	0456A0866P001	1	Interlock switch
*369	0456A0866P001	1	Latch check switch, when used
*370	0456A0866P002	1	Cut-off switch, 250A and 500A
371	006174582G001	1	Potential trip coil (125v d-c)
371	006174582G002	1	Potential trip coil (250v d-c)
371	006174582G032	1	Potential trip coil (230v a-c)
371	006275070G001	1	Potential trip coil (24v d-c)
371	006275070G002	1	Potential trip coil (48v d-c)
372	0215D0470G005	1	Potential trip linkage

* Not illustrated.

Δ Refer to breaker for proper model.

Type SBM - Order Cat. No. 0137A9192G003. Type SB-12 - Order Cat. No. 0137A9192G011.

TYPE AM-7.2 MAGNE-BLAST CIRCUIT BREAKERS

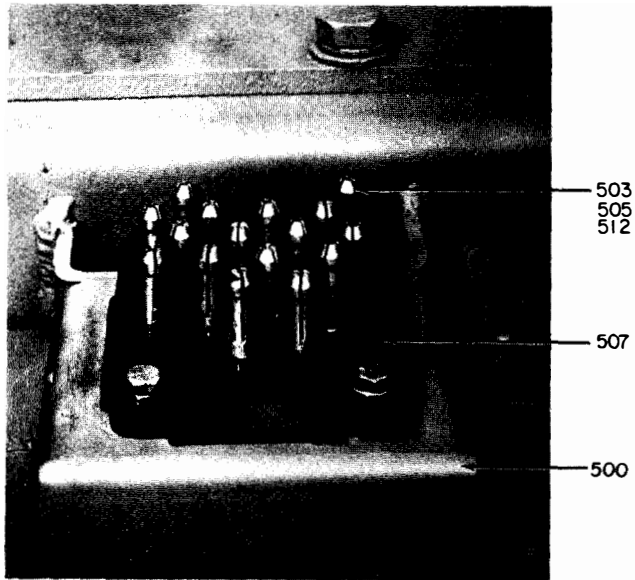


Fig. 8. Secondary disconnecting device (Ref. No. 500)

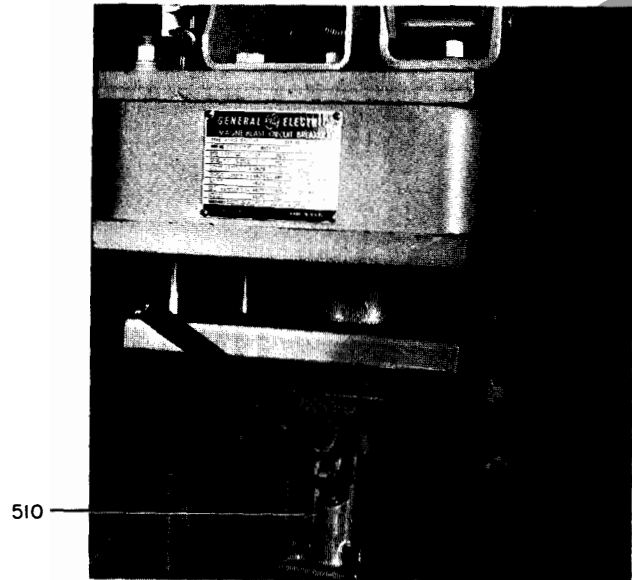


Fig. 9. Maintenance closing device (Ref. No. 510)

Secondary Disconnect Device and Maintenance Closing Device (Refer to Figs. 8 and 9)

Ref. No.	Cat. No.	No. Per Mechanism 250H, 500H	No. Per Mechanism 250A, 500A	Description
500	733-0802B0795G005	1	-	Secondary disconnect device, complete, 16 points
*500	0264B0173G005	-	2	Secondary disconnect device, complete, 7 points
503	006319964P002	16	14	Contact plug
505	000848768P001	16	14	Lockwasher for contact plug
507	006505244P001	1	-	Contact socket, 16 point
*507	006048758P001	-	2	Contact socket, 7 point
510	0258C0669G001	1	1	Maintenance closing device
512	0366A0234P001	†	†	Contact nut for No. 8 wire
512	0366A0234P002	†	†	Contact nut for No. 14 wire
512	0366A0234P003	†	†	Contact nut for No. 12 wire

* Not illustrated.

† A total of 16 contact nuts is used on the 250H and 500H breakers and a total of 14 contact nuts is used on the 250A and 500A breakers. Order size and quantity of contact nuts to correspond with the size and quantity of wires entering the secondary disconnect device.

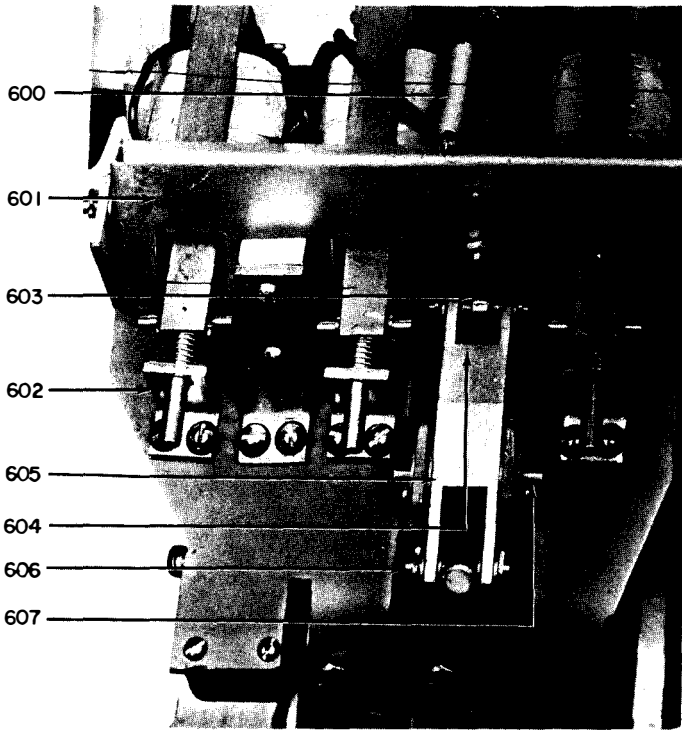


Fig. 10. Partial view of MS-13 mechanism with current trip

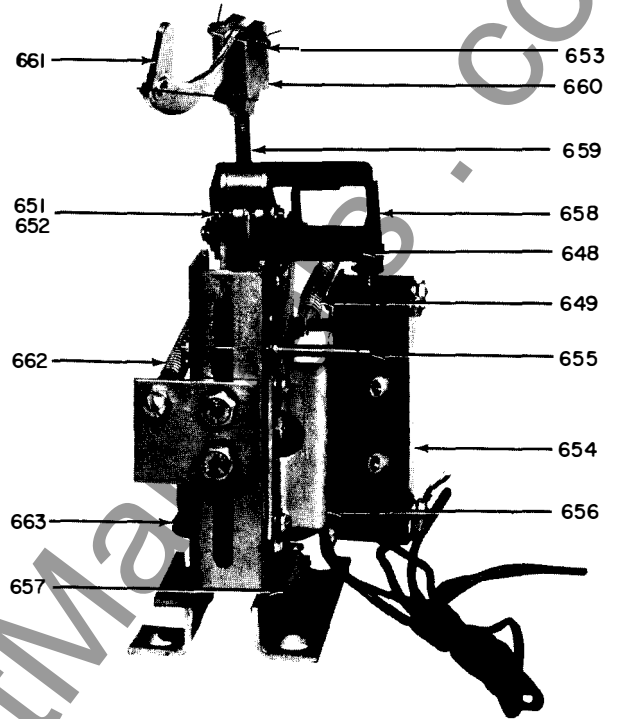


Fig. 11. Undervoltage device (Ref. No. 647)

(Refer to Figs. 10 and 11)

Ref. No.	Cat. No.	No. Reqd.	Description
600	733-006551725P001	1	Spring
601	0366A0611G001	1	Trip pan
602	006558748P001	1	Bracket
603	006558756P001	1	Trip latch
604	0414A0112P040	1	Ball bearing
605	0366A0600P001	1	Trip arm
606	006076401P307	1	Pin
607	006076404P313	1	Pin
647	0213X0185G001	1	AC undervoltage device (less coil)
647	0213X0217G001	1	DC undervoltage device (less coil)
648	0175V0574P001	1	Stop for d-c device only
649	0369A0443P001	1	Spring for d-c device only
650	006551726P001	1	Spring for a-c device only
651	0175V0578P001	1	Pin for d-c device only
652	006076401P309	1	Pin for a-c device only
653	006076401P305	2	Pin
654	0295B0227G002	1	Switch
655	0175V0576P001	1	Pin
656	0374A0246P001	1	Bracket
657	0175V0562P001	1	Shim for d-c device only
658	0384A0330G001	1	Link arm asm. for d-c device only
659	0137A6059P020	1	Stud
660	006558711P001	2	Coupling
661	006558723G001	1	Trip arm
662	006509798P001	2	Spring
663	006275017G019	1	Coil (125v d-c)
663	006275017G033	1	Coil (230v a-c)
663	006275017G020	1	Coil (250v d-c)
*664	0684C0642G001	1	Terminal board (6 point)

* Not illustrated.

TYPE AM-7.2 MAGNE-BLAST CIRCUIT BREAKERS

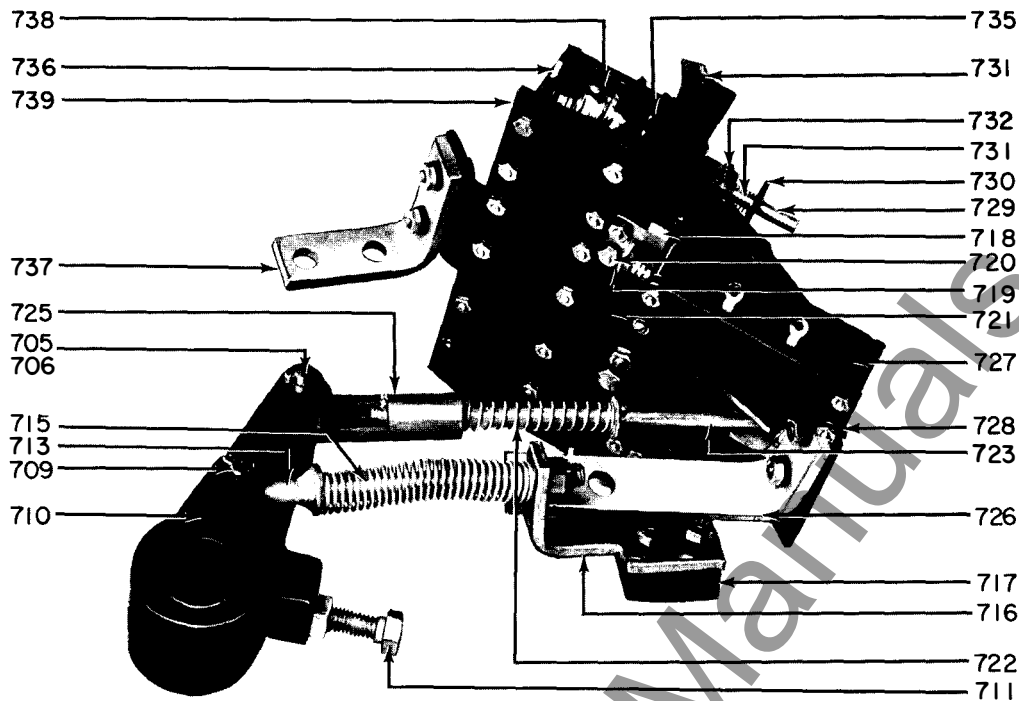


Fig. 12. Impact trip device (Ref. No. 702)

Impact Trip Device (Refer to Fig. 12)

Ref. No.	Cat. No.	No. Reqd.	Description
702	733-0213X0100G001	1	Impact trip device, complete
703	006591817P001	1	Lever
704	006591388P019	1	Locking plate
705	006076403P315	1	Pin
706	0137A6064P003	1	Roller
709	006076403P311	1	Pin
710	006592554G001	1	Crank
711	006557106P001	1	Adjusting screw
713	006558791G001	1	Eyebolt assembly
715	0161A5831P001	1	Spring
716	006443516P001	1	Bracket
717	006557105P001	1	Spacer
718	006558746P001	1	Bracket
719	006558747P001	1	Trip arm
720	006076401P315	1	Pin
721	0137A6048P003	2	Spacer
722	006509794P001	1	Spring
723	0174V0378P001	1	Rod
725	0174V0373P001	1	Coupling
726	006443666P001	1	Bracket
727	0295B0227G003	1	Switch
728	0107B9305P001	1	Frame assembly
729	006558752G001	1	Core assembly
730	006558751P001	1	Angle
731	006049320P001	3	Felt washer
732	006557068P009	1	Pin
734	006076401P385	1	Pin
735	002236575P001	2	Guide
736	004905058G004	1	Coil frame
737	006443667P001	1	Bracket
738	006174599G002	3	Current trip coil, 3 amp a-c
738	006174599G006	1	Capacitor trip coil (230v a-c)
739	0456A0334P001	1	Rubber guard

TYPE AM-7.2 MAGNE-BLAST CIRCUIT BREAKERS

GEF-4435A

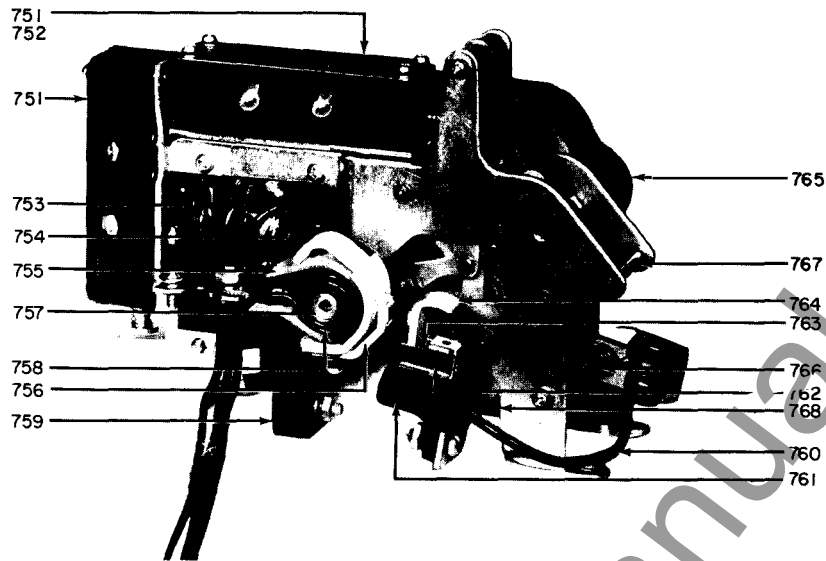


Fig. 13. Control device for all mechanisms (Ref. 750)

**Control Device Mechanism (Refer to Fig. 13)

Ref. No.	MVA	Cat. No.	No. Per Mechanism	Description
750	250	733-0403A0225G001	1	Control device (125v d-c)
750	500	006375988G005	1	Control device (125v d-c)
750	All	006375988G006	1	Control device (250v d-c)
Δ750	250	0403A0225G002	1	Control device (230v a-c) (intermittent)
#750	250	0403A0224G003	1	Control device (230v a-c) (intermittent)
750	500	006375988G009	1	Control device (230v a-c) (intermittent)
Δ750	250	0403A0223G001	1	Control device (230v a-c) (continuous)
#750	250	0403A0224G004	1	Control device (230v a-c) (continuous)
750	500	0403A0128G001	1	Control device (230v a-c) (continuous)
751	All	0295B0227G002	2	Auxiliary switch, top and back (125 and 25v d-c)
751	All	0295B0227G002	1	Auxiliary switch, back (230v a-c only)
752	All	0295B0227G001	1	Auxiliary switch, top (230v a-c only)
753	All	006275017G019	1	Coil (125v d-c)
753	All	006275017G020	1	Coil (250v d-c)
753	All	006275017G033	1	Coil (230v a-c) (continuous)
753	All	006275017G034	1	Coil (230v a-c) (intermittent)
754	All	006591455P001	*	Support for contact tip
755	All	006442392P001	*	Insulation
756	All	006591411G001	*	Support for stationary contact
757	All	006591450P001	*	Core
758	All	006412255P001	*	Blowout coil
759	All	006412251P001	*	Support for coil
760	250	006591440G001	1	Connector (250v d-c)
760	500	006591440G001	1	Connector
Δ760	250	006591440G003	1	Connector (125v d-c, 230v a-c) (intermittent or continuous)
#760	250	006591440G004	1	Connector (230v a-c) (intermittent or continuous)
761	All	006592161P001	*	Support for movable contact
762	All	006592162P001	*	Shield
763	All	006477041P001	*	Spring
764	All	006591412G001	*	Movable contact
765	All	006591404G001	*	Arc chute assembly
766	All	006272844	1	Spring
767	All	0365A0458	1	Spring (a-c intermittent and d-c)
767	All	006370699	1	Spring (a-c continuous)
768	All	006477063	1	Spring
†769	All	0456A0812G001	1	Hardware for mounting control device

† Not illustrated.

Δ This control device has a single arc chute.

This control device has double arc chutes.

* Quantity is (1) for control device with a single arc chute.

* Quantity is (2) for control device with double arc chutes.

** Always specify complete information from nameplate of control device when ordering replacement parts.

TYPE AM-7.2 MAGNE-BLAST CIRCUIT BREAKERS

PARTS RECOMMENDED FOR NORMAL STOCK

Fig. No.	Ref. No.	MVA	AMPS	Catalog Number for Type AM-7.2		No. Req'd.	Description
				-4	-6S		
1	7	ALL	ALL	733-0263B0292P002	733-0263B0292P002	3	Booster cylinder
1	14	ALL	ALL	0281B0708G001	0281B0708G001	3	Operating rod assembly
2	73	ALL	ALL	0236C0791G001	-----	3	Flexible connector (left)
2	73	ALL	ALL	-----	0208A8017G001	3	Flexible connector (left, long)
2	73	ALL	ALL	-----	0208A8017G003	3	Flexible connector (left, short)
2	74	ALL	ALL	0236C0791G004	-----	3	Flexible connector (right)
2	74	ALL	ALL	-----	0208A8017G002	3	Flexible connector (right, long)
2	74	ALL	ALL	-----	0208A8017G004	3	Flexible connector (right, short)
2	76	ALL	ALL	0236C0790G009	0213X0344G032	3	Arcing contact assembly
2	78	ALL	ALL	0414A0116P086	-----	3	Insulating plate
2	84	250	1200	0121A5964P001	-----	12	Primary contact finger spring
2	84	500	1200	0414A0180P001	-----	18	Primary contact finger spring
2	84	ALL	2000	006509787P001	-----	24	Primary contact finger spring
2	84	ALL	ALL	-----	0121A5964P001	18	Primary contact finger spring
3	142	ALL	ALL	0414A0194P002	-----	6	Upper shield (Mycalex)
3	156	ALL	ALL	0414A0116P002	0414A0197P001	3	Insulation plate
3	167	ALL	ALL	0456A0336P001	0132C2735P007	6	Lower runner barrier
3	174	ALL	ALL	0421A0201P001	0421A0201P001	6	Lower runner shield
3	178	ALL	ALL	-----	0132C2737G003	3	Shield and cooler assembly, right
3	178	ALL	ALL	-----	0132C2737G004	3	Shield and cooler assembly, left
4	211	250	ALL	0802B0742G003	0108B5536G001	3	Movable arcing contact
4	211	500	ALL	0802B0742G004	0108B5536G001	3	Movable arcing contact
4	212	250	1200	0137A9164P003	-----	3	Movable primary contact
4	212	500	1200	0114C5382P004	-----	6	Movable primary contact
4	212	ALL	1200	-----	0114C5382P004	6	Movable primary contact
4	212	ALL	2000	0137A9164P003	0114C5382P004	6	Movable primary contact
4	213	250	1200	0137A9164P004	-----	3	Movable primary contact
4	213	ALL	2000	0137A9164P004	0114C5382P004	3	Movable primary contact
4	215	250	1200	0236C0792G031	0213X0343G094	3	Tube and piston assembly
4	215	500	1200	0236C0792G015	0213X0343G094	3	Tube and piston assembly
4	215	ALL	2000	0236C0792G015	0213X0343G094	3	Tube and piston assembly
Δ5	261	250	ALL	006375521G004	006375521G004	1	Closing coil (110v d-c)
Δ5	261	250	ALL	0802B0799G001	0802B0799G001	1	Closing coil (125v d-c or 230v a-c, 60 hz)
Δ5	261	250	ALL	006375521G003	006375521G003	1	Closing coil (220v d-c)
Δ5	261	250	ALL	0802B0799G003	0802B0799G003	1	Closing coil (250v d-c)
Δ5	261	500H	ALL	006375522G005	006375522G005	1	Closing coil (110v d-c)
Δ5	261	500H	ALL	006375522G002	006375522G002	1	Closing coil (125v d-c and 230v a-c, 60hz)
Δ5	261	500H	ALL	006375522G005	006375522G005	1	Closing coil (220v d-c)
Δ5	261	500H	ALL	006375522G001	006375522G001	1	Closing coil (250v d-c)
Δ5	261	500A	ALL	006375522G004	006375522G004	1	Closing coil (125v d-c or 230v a-c)
Δ5	261	500A	ALL	006375522G003	006375522G003	1	Closing coil (250v d-c)
Δ7	371	ALL	ALL	006174582G001	006174582G001	1	Potential trip coil (125v d-c)
Δ7	371	ALL	ALL	006174582G002	006174582G002	1	Potential trip coil (250v d-c)
Δ7	371	ALL	ALL	006174582G032	006174582G032	1	Potential trip coil (230v a-c, hz)
Δ7	371	ALL	ALL	006275070G001	006275070G001	1	Potential trip coil (24v d-c)
Δ7	371	ALL	ALL	006275070G002	006275070G002	1	Potential trip coil (48v d-c)
Δ11	663	ALL	ALL	006275017G019	006275017G019	1	Undervoltage device coil (125v d-c)
Δ11	663	ALL	ALL	006275017G033	006275017G033	1	Undervoltage device coil (230v a-c, hz)
Δ11	663	ALL	ALL	006275017G020	006275017G020	1	Undervoltage device coil (250v d-c)
12	738	ALL	ALL	006174599G002	006174599G002	3	Current trip coil (3 amp, 60hz)
Δ12	738	ALL	ALL	006174599G006	006174599G006	1	Capacitor trip coil (230v a-c, 60hz)
Δ13	753	ALL	ALL	006275017G019	006275017G019	1	Control device coil (125v d-c)
Δ13	753	ALL	ALL	006275017G020	006275017G020	1	Control device coil (250v d-c)
Δ13	753	ALL	ALL	006275017G033	006275017G033	1	Control device coil (230v a-c, 60hz continuous)
Δ13	753	ALL	ALL	006275017G034	006275017G034	1	Control device coil (230v a-c, 60hz intermittent)

Δ Refer to nameplate or summary for proper voltage rating.

GENERAL ELECTRIC COMPANY
SWITCHGEAR BUSINESS DEPARTMENT
PHILADELPHIA, PA 19142

GENERAL  ELECTRIC