

INSTRUCTION MANUAL

For

CIRCUIT BREAKER TEST SETS

MODEL DDA-3000/6000

It is essential that this instruction book be read thoroughly by the operator or the test equipment before putting the equipment in service.

Revision History

Revision	ECN #	Date
1	27168	11/11/96
2	27356	11/14/97
3	27999	3/12/98
4	29358	7/3/02

IMPORTANT

The information and data contained within this instruction manual are proprietary property of AVO International. The equipment described herein may be protected by one or more U.S. patents. AVO International specifically reserves to itself all rights to such proprietary information as well as all rights under any such patent, none of which is waived by the submission of this instruction manual.

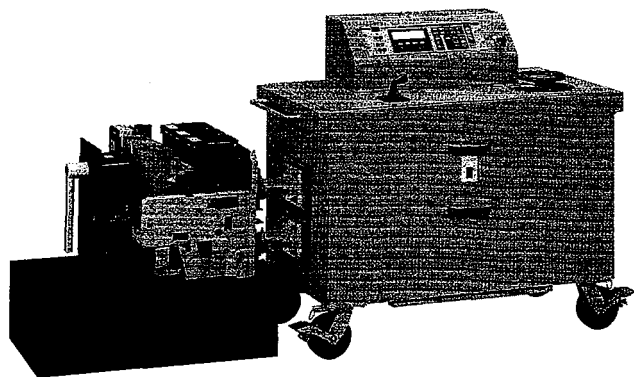
The recipient, if a Government agency, acknowledges that this instruction book and the equipment described were procured with "Limited Rights" to technical data as described in ASPR 9-203 (b).

Copyright AVO International Inc. 1995, 1996, 1997

TABLE OF CONTENTS

SECTION I	1
1. INTRODUCTION	1
A. GENERAL DESCRIPTION & SPECIFICATION BULLETIN	1
1. DESCRIPTION of CONTROLS and INSTRUMENTATION	4
A. GENERAL DESCRIPTION	4
B. CONTROLS AND INSTRUMENTATION	4
SECTION III	9
1. FRONT PANEL DISPLAY AND PROGRAMMING MENUS	9
2. Flow Diagram of Display Menus	10
A. METERING DISPLAY	10
B. MAIN MENU	10
C. LCD CONTRAST MENU	11
D. SCR CONTROL MENU	11
E. PULSE DURATION AND FIRING ANGLE MENUS	11
F. ACQUISITION CONTROL MENU	12
SECTION IV INPUT AND OUTPUT CIRCUITS	14
1. INPUT:	14
A. INPUT VOLTAGE	14
B. INPUT LEADS	14
C. GROUNDING	14
D. SAFETY PRECAUTIONS	14
2. OUTPUT	14
A. SELECTION OF OUTPUT CONNECTIONS	14
B. OUTPUT CONNECTIONS	15
C. DUTY RATINGS AND OVERLOAD CAPACITIES	16
SECTION V	19
1. TEST PROCEDURES FOR TESTING OF MOTOR OVERLOAD RELAYS	19
2. TEST PROCEDURE FOR TESTING OF MOLDED CASE AND LOW VOLTAGE POWER CIRCUIT BREAKERS	22
3. MAINTENANCE OF PROTECTIVE APPARATUS MAINTENANCE OF MOTOR OVERLOAD RELAYS	26
4. MAINTENANCE OF MOLDED CASE CIRCUIT BREAKERS	29
5. MAINTENANCE OF LOW VOLTAGE POWER CIRCUIT BREAKERS	31
6. SUGGESTED RECORD FORMS - INSPECTION AND TEST RESULTS	33
SECTION VI	34
2. SERVICE DATA	34
SECTION VII	37
1. SCHEMATIC DRAWING	37

DDA-3000 and DDA-6000 Universal Circuit Breaker Test Sets



- **Model DDA-1 Digital Data Acquisition Instrumentation and Control System**
- **High-current output: 60,000 A for Model DDA-6000; 35,000 A for Model DDA-3000**
- **Digital signal processing (DSP) technology**
- **Variable pulse time and firing angle output current control**
- **Compliant with NEMA AB-4 test guidelines**

DESCRIPTION

Incorporating the latest technological advancements, Models DDA-3000 and DDA-6000 Series are designed specifically to test low-voltage power and molded-case circuit breakers equipped with thermal, magnetic or solid-state trip devices. The units are fully compliant with NEMA AB-4 test guidelines.

Tests are performed by simulating an overload or fault condition. Each test set is an integrated test system that provides a variable, high-current output. The test sets incorporate all control circuitry and instrumentation necessary to test direct-acting circuit breakers accurately, efficiently and safely.

The unique transformer and circuit design results in a very high-capacity test set in a very compact size. Advanced digital control and instrumentation provides exact testing capacity.

APPLICATIONS

Universal in application, the test sets will test virtually all low-voltage, molded-case and metal-clad, direct-acting ac circuit breakers produced by General Electric, Westinghouse, Federal Pacific, Square D, Gould, ABB, ITE, Siemens and other manufacturers.

Model DDA-3000 is rated for testing breakers up to 3000 amperes. Model DDA-6000 is rated for testing breakers up to 6000 amperes. Rugged and reliable, Megger circuit breaker test sets will provide years of trouble-free operation.

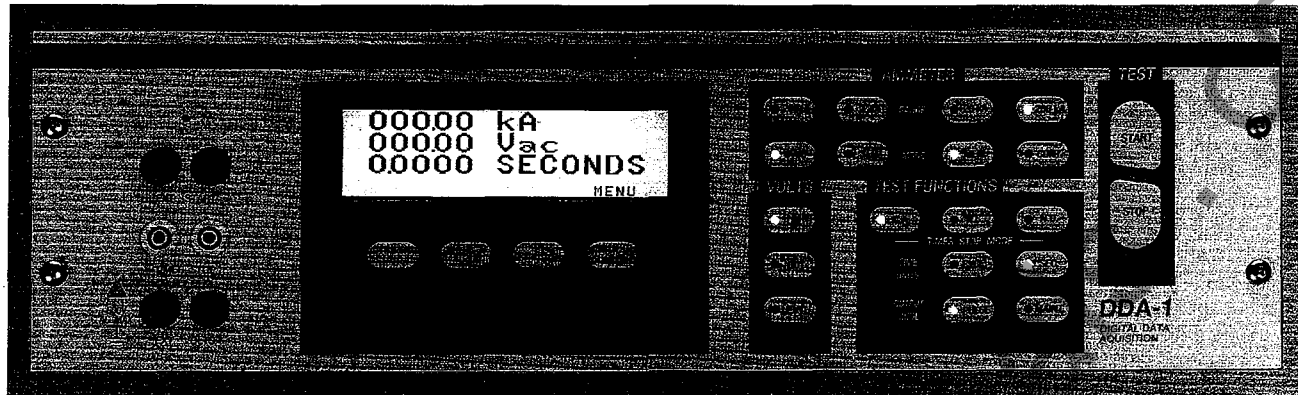
The test sets also may be used for other high-current applications, such as verifying the ratio of current

transformers and performing heat runs or primary injection testing of high-voltage breakers and their associated protective relays.

All Model DDA-3000 and DDA-6000 test sets have identical features, instrumentation and operational characteristics. The only changes in the specifications among the units are their size, weight and maximum output-current capacity.

FEATURES AND BENEFITS

- **Initiating control circuit:** Fully digital initiating control circuit provides both pulsed and maintained control modes of output duration. The pulsed mode automatically pulses the output to any programmed pulse duration. This provides additional testing capabilities for electromechanical and solid-state trip devices. A short pulse duration also limits the preheating of the breaker under test while setting the test current.
- **In the maintained mode,** the output remains energized until manually turned off or, during timing test, until the device under test operates, which both stops the timer and de-energizes the output.
- **Zero dc offset:** Use of digitally controlled SCRs instead of a contactor to initiate the output of the test set eliminates closing-time error and thereby ensures precise initiation at the zero crossover point of the output current waveform every time. Initiation at the zero crossover point ensures symmetrical output current by eliminating dc offset in the current waveform. Therefore accurate, repeatable test results are assured even with currents of very short duration, as when conducting tests of instantaneous or short-time delay trip elements.



The Model DDA-1 control panel digitally samples the output current and mathematically calculates the current supplied to the breaker under test.

The digital control of the SCRs also allows the unit to initiate at any point within 90 degrees of the zero crossover point of the output-current waveform. This will allow the intentional insertion of a dc offset into the waveform for a complete investigation of a breaker's operation.

- **Compact enclosure:** Improvements in transformer and circuit design have resulted in a very high-capacity test set in a single, relatively small enclosure. For safety and mobility, the test set is housed in a single, rugged, sheet metal enclosure with a low center of gravity, tow ring, lifting eyes and large, locking swivel casters with brakes.

To increase maneuverability, all four casters swivel; however, they also can be locked into a fixed position easily. The compact size of test sets permits easy movement through narrow doors. Controls and instrumentation are positioned so that the operator can simultaneously observe the circuit breaker under test.

- **Construction:** Built for years of trouble-free, reliable operation, the test sets include rugged instrumentation and controls designed to withstand the vibration and shock of frequent transportation. They need never be removed from the enclosure.
- **Protection:** Fuse, circuit breaker and overload protective devices are incorporated. The output-initiating SCRs are forced-air cooled, and temperature sensors provide protection from overheating. Emergency stop pushbutton is provided to de-energize all input power to the test set.
- **Ground safety interlock:** An interlock circuit ensures that the test set chassis is connected to system ground before the output of the test set can be energized.
- **Accessory outlet:** A ground-fault-protected, 120 volt outlet with a capacity of 1.2 kVA is provided for convenient connection of accessory equipment. Other voltages are available internally for customer-installed outlets.

INSTRUMENTATION AND CONTROLS

Model DDA-1: The Digital Data Acquisition instrumentation and control system was designed

specifically to provide precise control of the output current and accurate metering of the breaker under test.

Model DDA-1 uses the latest in digital signal processing (DSP) technology. This technology provides complete digital control of the SCRs and digitally samples the output current for high-accuracy measurements.

Digital ammeter: Model DDA-1 samples the output current digitally and mathematically calculates the current that is supplied to the breaker under test. This process increases the accuracy of the ammeter systems and provides extreme flexibility in what current value is displayed. For example, when the test set is delivering a continuous current, the digital ammeter is continuously sampling the output waveform and can display a true rms value of the current.

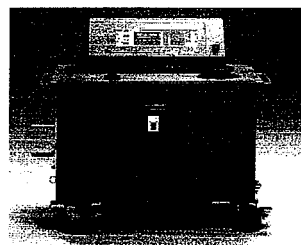
For measuring short-duration currents, Model DDA-1 can calculate the output current in the following ways via selection from the soft control buttons on the panel:

1. For any output current greater than half a cycle, Model DDA-1 can calculate the true rms value of the output current pulse. For any output less than half a cycle, a true rms measurement is invalid.
2. For any current pulse, Model DDA-1 can measure the peak current and calculate an anticipated rms value of the current from the peak current.

This multiple-current calculation feature is also useful when testing different styles of solid-state trip devices. This feature allows the test set to simulate a similar type of current calculation that is being used by the various solid-state trip devices.

Digital timer: Thanks to digital signal processing technology, Model DDA-1's system knows exactly when current is present and when the breaker under test opens. This provides high-accuracy timing even when testing the instantaneous trip function on fast-acting breakers. In addition, the digital timer can display the breaker trip time in cycles or seconds.

A completely digital, solid-state circuit starts the timer automatically when the output current starts to flow and stops it when the device under test operates. This circuit will accommodate a variety of test conditions including:



The DDA Series offers high capacity in a single, relatively compact enclosure that can be easily maneuvered.

1. When testing a circuit breaker or a device which has no auxiliary contact to monitor (e.g., a single-pole circuit breaker), the timer starts when the output current starts to flow and stops when the output current is interrupted.
2. When testing a device and monitoring normally closed contacts, the timer starts when the output current starts to flow and stops when the contacts open.
3. When testing a device and monitoring normally open contacts, the timer starts when the output current starts to flow and stops when the contacts close.

Digital voltmeter: Model DDA-1 can be used to measure the input voltage to the test set or the output voltage from the test set. It also can be used as a diagnostic tool to evaluate contact condition by measuring the voltage drop across breaker contacts while subject to high current.

Panel indicators: Panel lamps incorporated for operator safety and convenience, indicate:

1. Output of the set ENERGIZED
2. Thermal WARNING or SHUTDOWN
3. GROUND INTERLOCK open
4. OVER RANGE of ammeter

External initiate circuit: Allows initiation of the test set from a remote location when desired.

SPECIFICATIONS

Input

Model No.	Input Voltage (single-phase)	Input Frequency	Input Current
DDA-3000	460 V $\pm 5\%$	60 Hz	200 A
DDA-3001	380 V $\pm 5\%$	50 Hz	200 A
DDA-3002	415 V $\pm 5\%$	50 Hz	200 A
DDA-6000	460 V $\pm 5\%$	60 Hz	350 A
DDA-3001	380 V $\pm 5\%$	50 Hz	350 A
DDA-6002	415 V $\pm 5\%$	50 Hz	350 A

Because Model DDA-3000/-6000 is used all over the world to test low-voltage circuit breakers, there are a number of test sets designed to contend with the many different input voltages and frequencies.

When ordering, select the test set which best suits the power system available. The standard input power requirements for the DDA-3000 and DDA-6000 series are as follows:

Output

Output Circuit: The output of the test set is easily adjustable from zero to the maximum current available through the impedance of the device under test. Two output ranges are provided to accommodate a variety of load circuit impedances. For high impedance devices, the output can be connected in

Model No.	Output Current		
	Maximum Continuous Current	Maximum Current Through a Circuit Breaker	Maximum Current Through a Short Circuit
DDA-3000	4500 A	35,000 A	60,000 A
DDA-3001	4446 A	28,000 A	48,000 A
DDA-3002	4446 A	28,000 A	48,000 A
DDA-6000	6250 A	60,000 A	100,000 A
DDA-3001	6175 A	50,000 A	80,000 A
DDA-6002	6175 A	50,000 A	80,000 A

Model No.	WEIGHT		DIMENSIONS	
	lb	kg	H X W X D (in.)	H X W X D (cm)
DDA-3000 Series	1000	454	46 X 46 X 28 in.	117 X 117 X 71 cm
DDA-6000 Series	1200	545	46 X 55 X 28 in.	117 X 140 X 71 cm

series (with the series bar provided) to double the output voltage at a reduced maximum current.

The maximum current available from the test set is determined primarily by the impedance of the load circuit.

The duration of the available current is determined primarily by thermal conditions within the test set.

Output Connections: To provide maximum utilization of the output available from the test set, each set is equipped with a Megger stab adapter board and stab sets Model CBS-1 and Model CBS-2 for use with drawout style, metal-clad breakers. The stabs eliminate the significant losses that occur if leads are used to connect the breaker under test to the test set. Cables must be used when testing molded-case breakers or other devices which will not connect directly to the stabs.

Duty Cycle: The test set will supply the rated continuous current indicated for 30 minutes, followed by 30 minutes off.

Maximum Output Current: Model DDA-3000/-6000 Series will produce the following outputs at rated input voltage:

Instrumentation

Digital Ammeter

Operating Mode

Memory

Continuous

Digital Display: 5-digit display with 0.281 in. (7 mm) numerals

Ranges: 200/2000/20,000/200,000 A

Overall Ammeter System Accuracy

Continuous $\pm 1\%$ of reading

Peak Pulse $\pm 2\%$ of reading

RMS Pulse $\pm 1.5\%$ of reading

Digital Timer

Digital Display: 5-digit display with 0.281 in. (7 mm) numerals

Ranges

0.0001 to 99999 seconds

0.0001 to 99999 cycles

Accuracy: $\pm 1\%$ of reading

Digital Voltmeter

Operating Mode

Input voltage

Output voltage

External voltage

Digital Display: 5-digit display with 0.281 in. (7 mm) numerals

Ranges: 0 to 600 V

Accuracy: $\pm 1\%$ of reading

OPTIONAL ACCESSORIES

Protective Cover

A tough cover made of heavyweight, reinforced, vinyl-coated nylon is available for protecting the test set from oil, dust or other particulate matter during storage.

It conforms to Mil-C-43006D and passes Mil-C-20696B test for oil and hydrocarbon resistance. It will withstand continuous exposure to temperatures ranging from -40 to +180° F (-40 to +82° C), and the fire-retardant material is treated with fungal and ultraviolet ray inhibitors.

Input Autotransformer

If the nominal input voltage for the test set is not available, or if use at different locations requires the use of a variety of input voltages, an autotransformer may be used.

The multitapped autotransformer is equipped with a power on/off switch, appropriate sockets, plugs, interconnect and tap selector cables. It is housed in a rugged sheet-metal enclosure with casters and handles.

All voltages are single-phase with a tolerance of $\pm 5\%$. Input taps of 240 volts and below are not recommended for obtaining maximum output of the test set. For other combinations of input and output voltages, contact Megger.

Model No.	WEIGHT		DIMENSIONS	
	lb	kg	H X W X D (in.)	H X W X D (cm)
DDA-3000 Series	1000	454	46 X 46 X 28 in.	117 X 117 X 71 cm
DDA-6000 Series	1200	545	46 X 55 X 28 in.	117 X 140 X 71 cm

ORDERING INFORMATION

Item (Qty)	Cat. No.
Model DDA-3000	DDA-3000
Model DDA-3001	DDA-3001
Model DDA-3002	DDA-3002
Model DDA-6000	DDA-6000
Model DDA-6001	DDA-6001
Model DDA-6002	DDA-6002
Included Accessories	
Standard stab sets	CBS-1 and CBS-2
Leads	
Timer leads, 12 ft (3.7 m) [2]	2997
Input leads, 15-ft (4.5-m), 4/0 cable [2]	17163
Fuses	
Fuse 500 V, 6 A [2]	9377
Fuse 250 V, 1.5 A [5]	950
Stab series bar [1]	5532
Instruction manual [1]	17176
Optional Accessories	
Input autotransformer	AT-1, AT-4
Leads included with input autotransformer	
Interconnect leads, 10-ft (3-m), 4/0 cable [2]	17164
Jumper lead [1]	17527
Protective cover	PC-1
Model CBS-3 stabs	Contact Technical Sales

UK
Archcliffe Road, Dover
CT17 9EN England
T (0) 1 304 502101
F (0) 1 304 207342

UNITED STATES
4271 Bronze Way
Dallas, TX 75237-1019 USA
T 1 800 723 2861
T 1 214 333 3201
F 1 214 331 7399

OTHER TECHNICAL SALES OFFICES
Norristown USA, Toronto CANADA,
Mumbai INDIA, Paris FRANCE,
Sydney AUSTRALIA,
Madrid SPAIN and
The Kingdom of BAHRAIN.

ISO STATEMENT
Registered to ISO 9001:1994 Reg no. Q 09250
Registered to ISO 14001 Reg no. EMS 61597
DDA3000_6000_DS_en_V11
www.megger.com
Megger is a registered trademark

B. SPECIFICATIONS

DDA-3000/3001/3002 and 6000/6001/6002 Specifications

Input

Model No.	Input Voltage (Single-phase)	Input Frequency	Input Current
DDA-3000	460 V \pm 5%	60 Hz	200 A
DDA-3001	380 V \pm 5%	50 Hz	200 A
DDA-3002	415 V \pm 5%	50 Hz	200 A
DDA-6000	460 V \pm 5%	60 Hz	350 A
DDA-6001	380 V \pm 5%	50 Hz	350 A
DDA-6002	415 V \pm 5%	50 Hz	350 A

Output

Model No.	Output Current		
	Maximum Continuous Current	Maximum Current Through a Circuit Breaker	Maximum Current Through a Short Circuit
DDA-3000	4500 A	35,000 A	60,000 A
DDA-3001	4446 A	28,000 A	48,000 A
DDA-3002	4446 A	28,000 A	48,000 A
DDA-6000	6250 A	60,000 A	100,000 A
DDA-6001	6175 A	50,000 A	80,000 A
DDA-6002	6175 A	50,000 A	80,000 A

Instrumentation

Digital Ammeter

Operating Mode

Memory

Continuous

Digital Display

5 - digit display with 0.281 in (7 mm) numerals

Ranges

200 / 2,000 / 20,000 / 200,000 A

Accuracy

Continuous - $\pm 1\%$ of Reading

Pulse (Peak) - $\pm 1.5\%$ of Reading

Pulse (RMS) - $\pm 2\%$ of Reading

Digital Timer

Digital Display

5 - digit display with 0.281 in (7 mm) numerals

Ranges

0.0001 to 99999 s

0.0001 to 99999 cycles

Accuracy

$\pm 1\%$ of Reading for times that are 2 cycles and longer

Digital Voltmeter

Operating Mode

Input Voltage

Output Voltage

External Voltage

Digital Display

5 - digit display with 0.281 in (7 mm) numerals

Ranges

600 V

Accuracy

$\pm 1\%$ of Reading

Dimensions and Weight

ModelNo.	Weight		Dimensions	
	lb	kg	H x W x D (in.)	H x W x D (cm.)
DDA-3000	1000	454	46 x 46 x 28 in.	117 x 117 x 71 cm.
DDA-6000	1200	545	46 x 55 x 28 in.	117 x 140 x 71 cm.

SECTION II

1. DESCRIPTION of CONTROLS and INSTRUMENTATION

A. GENERAL DESCRIPTION

AVO International Circuit Breaker Test Sets are portable high current units designed for testing and adjusting low voltage circuit breakers and other current actuated devices. The units incorporate a variable high current ac output, and uses the latest in Digital Signal Processing (DSP) technology to control the circuit breaker test sets as well as measure the reactions of the breaker under test. The units are self protected against overloads and short circuits.

B. CONTROLS AND INSTRUMENTATION

- | | |
|----------------------------------|--|
| 1) OUTPUT CONTROLS: | Adjustment of the output is accomplished by the combination of the OUTPUT SELECTOR Switch and VERNIER CONTROL. |
| a) OUTPUT SELECTOR Switch: | This is a multi-position switch which provides coarse adjustment of the output. Position 1 provides minimum output. The last position provides maximum output. The OUTPUT SELECTOR Switch is interlocked with the output initiating circuit. Depressing the switch to change positions operates the interlock and de-energizes the output. |
| b) VERNIER CONTROL (Power Stat): | Provides fine adjustment of the output between steps of the OUTPUT SELECTOR Switch. |
| 2. Circuit Breaker: | Functions as the input POWER ON/OFF Switch and also provides short-circuit and overload protection. |
| 3. FUSE: | Protects control and isolation transformers |
| 4. AUX. OUTLET | A ground fault protected 120-volt outlet is provided for convenient connection of accessory equipment. |

5. Input Receptacles

Receptacles for input power connection

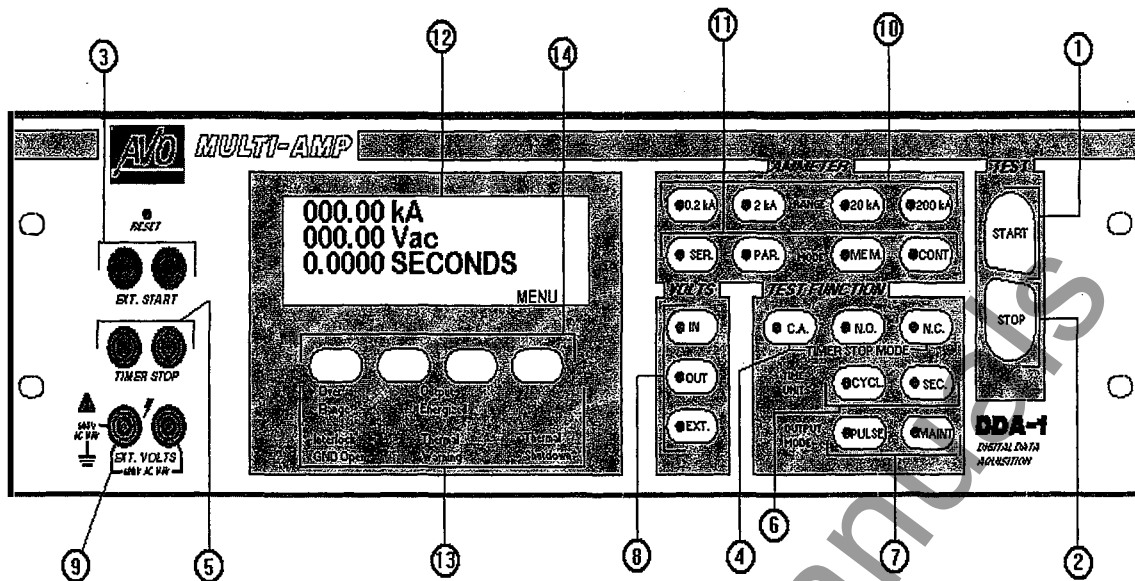
6. Equipment Ground

Test set chassis ground. For safety purposes, this should be connected to a power system ground.

7. Isolation Ground

This ground connection is part of an interlock circuit that verifies that the test set chassis is connected to a separate earth ground.

4. DDA CONTROL PANEL



TEST

1. **START Button** - Energizes the output
2. **STOP Button** - De-energizes the output.
3. **EXT. START Terminals** - An external switch can be plugged into these terminals (blue) to provide remote initiation of the test set.

TEST FUNCTION

4. **TIMER STOP MODE** - Three modes of operation are available to control the output and timer operation.

C.A. (Current Actuate) - When the device to be tested has no contacts other than those involved in the passing of test current, this type of operation is used. In this position, the timer will run from the initiation of the test until the test circuit is interrupted. This position is the position most commonly used for controlling timer operations (Default setting). The output will de-energize when the current level drops below 8% of range.

N.O. (Normally Open) - When it is desired to control the timer from a set of normally open contacts (such as an auxiliary contact) this type of operation may be used. In this position, the timer will run from the initiation of the test until the opening of the contacts connected to the TIMER STOP (Yellow) terminals.

N.C. (Normally Closed) - When it is desired to control the timer from a set of normally closed contacts (such as a multi-pole circuit breaker), this type of operation may be used. In this position, the timer will run from the initiation of the test until the opening of the contact connected to the TIMER STOP (Yellow) terminals.

5. **TIMER STOP Terminals** - These terminals (yellow) facilitate connection to a set of contacts on the device under test to monitor contact opening and closure. The timer

stops and output is de-energized when the device operates (used in conjunction with the TIMER STOP MODES of N.O. and N.C).

6. **TIME UNITS Selection**- Selects the mode of count; either cycles or seconds.

7. **OUTPUT Mode** - The following two selections are available

PULSE - When selected, the output of the test set is on for a short, specified time period (default is 5 cycles) and then is turned off. (Should the device under test operate after pushing the START Button, the output will be de-energized). This position is normally used when setting the test current prior to the timing test and providing short high current pulses for instantaneous tests. However, the duration of this output pulse can be programmed via the Display Menu. (See the Section III, E. Front Panel Display and Programming Menus.) (Default Setting).

MAINT. - When selected, and the START Button is pressed, the control circuit maintains the output of the test set until the device under test operates or the STOP Button is pressed. This is the normal position for Time Delay tests.

VOLTS (voltmeter selection) Switches

8. **VOLTS** - three different selections are available for display

IN - When this voltage display selection is made, the voltage at the input plugs of the test set will be displayed (Default Setting).

OUT - When this voltage display selection is made, the voltage at the output terminals of the test set will be displayed.

EXT. - When this voltage display selection is made, the voltage applied to the EXT. VOLTS terminals will be displayed.

9. **EXT. VOLTS terminals** - These two terminals enable the digital voltmeter to measure external a.c. voltages up to 600 Volts.

AMMETER

10. **AMMETER RANGE Switches** - Selects the desired full scale range of the meter.

NOTE: The output current level from the test set must be at least 8 percent of any full scale value before the ammeter will indicate an output reading. **Please be aware that changing ammeter ranges while the output is energized may result in erroneous ammeter readings.** The 4 range selections are 0.2kA/ 2kA/ 20kA / and 200 kA range. Default Setting is the 200 kA range.

11. **AMMETER MODE**

MEM/CONT - Selects the mode of the ammeter circuit. In the MEM position, the highest measured current is indicated on the ammeter. The CONT mode permits

the ammeter to continually indicate the value of output current. When in the CONT. and MAINT. Modes of operation, it will require 30 cycles of output current before a current value will be displayed. Default Setting is MEM.

SER/PAR - When operating the unit with the output in a series configuration, this switch must be in the SERIES position in order for the ammeter to read the correct amount of output current. (See Section IV, 2, A for more details.) The default setting is PARALLEL.

FRONT PANEL DISPLAY AND INDICATORS

12. **LCD Display Panel** - This panel displays Output Amperage, Vac, and Time. It is also used to program many other features of the DDA control panel (See Section III, Front Panel Display and Programming Menus for more details).

13. Front Panel Indicators

Over Range - Illuminates to indicate that output current has exceeded the AMMETER RANGE selected.

Output Energized - Illuminates to indicate that the SCR has gated and the output is energized.

Interlock GND Open - A special ground interlock circuit is incorporated which verifies that the test set chassis is connected to system ground before the output of the test set can be energized. If not properly grounded, this indicator will illuminate and prevent the test set from energizing.

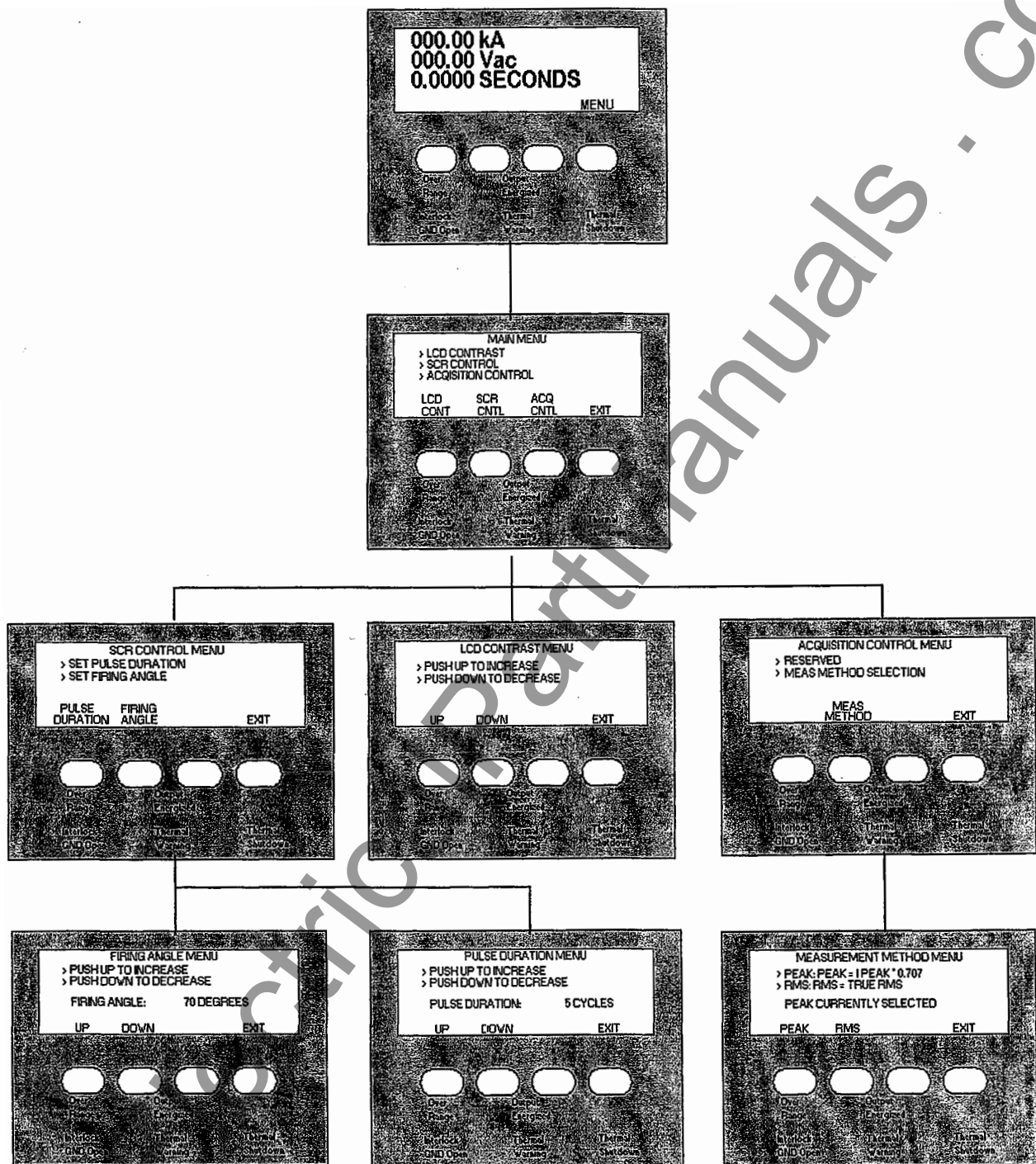
Thermal Warning - Indicates that the thermal status of the test set is approaching an over temperature condition.

Thermal Shutdown - Indicates that the thermal status of the test set has reached an over temperature condition. The test set will not operate as long as there is an over temperature condition.

14. **Softkeys** - Used to set programmable functions indicated on the LCD display panel.

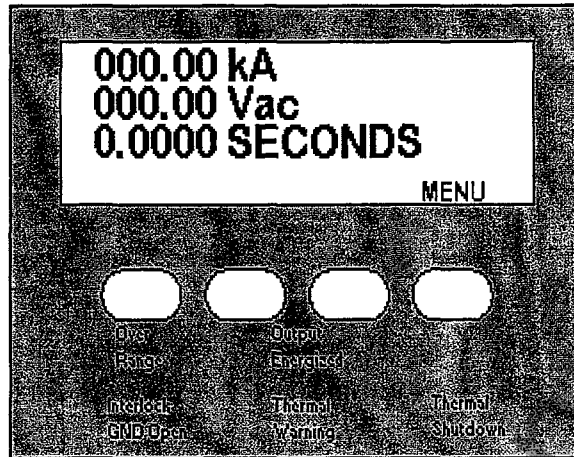
SECTION III

1. FRONT PANEL DISPLAY AND PROGRAMMING MENUS



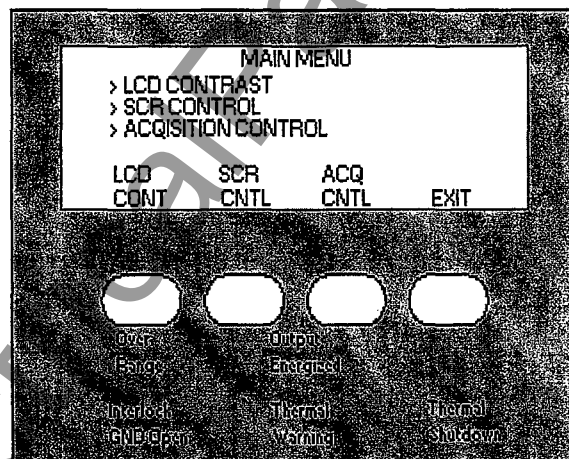
2. Flow Diagram of Display Menus

A. METERING DISPLAY



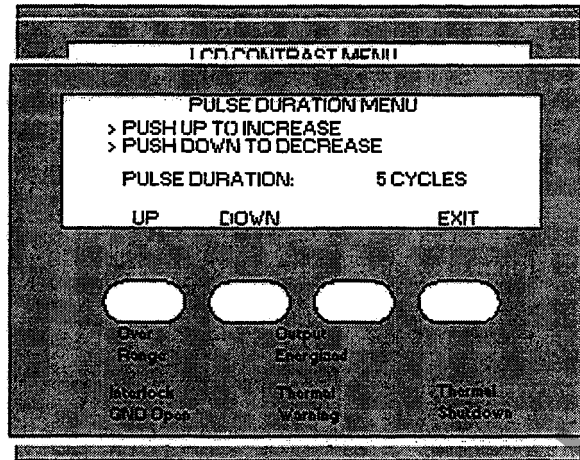
All of the programmable menu options may be accessed by pressing the soft key underneath the word MENU in the metering display screen. When pressed, the following display will appear.

B. MAIN MENU



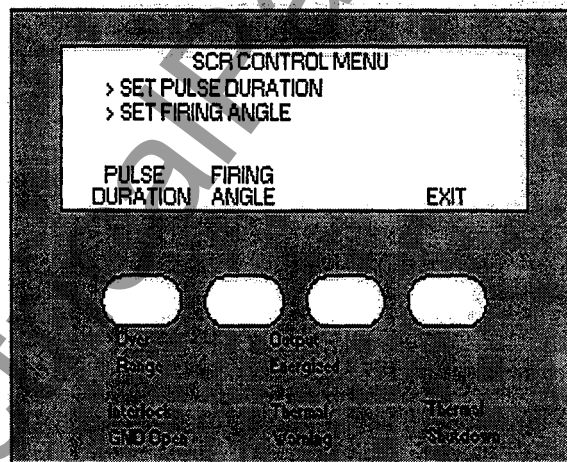
From the MAIN MENU the user may select programming menus to make adjustments to the LCD display contrast, SCR controls, or Acquisition control (current calculation method). The user may also select to EXIT back out to the metering display screen. The desired option would be selected by pressing the soft key directly beneath that option.

C. LCD CONTRAST MENU



The LCD CONTRAST MENU provides two options for optimizing a user's ability to view the display. Pressing the soft key directly beneath UP will cause the intensity of the display to be increased. Pressing the soft key directly beneath DOWN will cause the intensity of the display to be decreased. This menu also provides the option to return to the previous menu by pressing the soft key directly beneath EXIT.

D. SCR CONTROL MENU

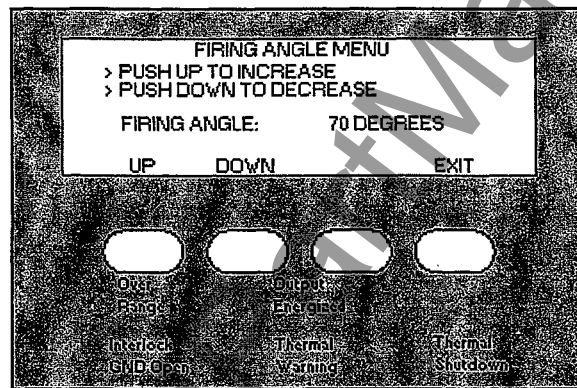


The SCR CONTROL MENU provides the ability to enter into two different areas of SCR adjustment. Pressing the soft key directly beneath PULSE DURATION will display a menu that will allow the user to program the number of cycles that the output of the test set will be energized during a momentary pulse. Pressing the soft key beneath FIRING ANGLE will display a menu that will allow the user to program the angle at which the output signal of the test set is initially energized.

E. PULSE DURATION AND FIRING ANGLE MENUS

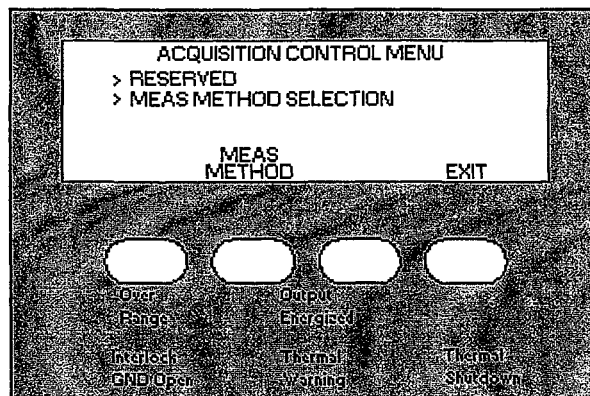
The PULSE DURATION MENU allows the user to program the number of cycles that the output of the test set will be energized during a momentary pulse. The number of cycles can be increased or decreased by pressing the soft keys directly beneath UP or DOWN. Pressing the soft key beneath EXIT will return the user to the previous menu. The default pulse duration setting is 5 cycles.

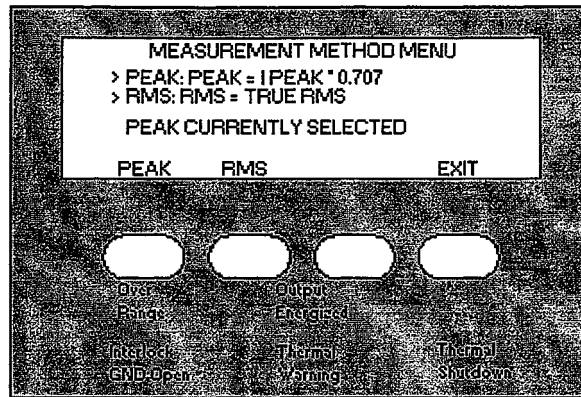
The FIRING ANGLE MENU allows the user to program the initial firing angle at which the output signal of the test set is energized. This is important when dealing with asymmetrical waveforms. The more inductive the test specimen, the more asymmetrical the output of the test set will be due to DC offset. Asymmetry in the output of the test set has become of increased importance when performing instantaneous trip tests on circuit breakers. By providing the ability to adjust the



firing angle of the test set, the user can minimize the effect of DC offset and therefore collect more accurate information with regard to the instantaneous characteristics of the test specimen. See ACQUISITION CONTROL MENU for information on how to determine if the output of the test set is symmetrical and how to adjust the firing angle if it is not. The default firing angle is 70°.

F. ACQUISITION CONTROL MENU





The Acquisition Control MENU allows the user to select between two different current measurement methods. By pressing the softkey directly beneath either PEAK or RMS, the user selects which calculation will be used in displaying measured current on the metering display. PEAK measures the highest peak and multiplies it by a constant 0.707. This method of measurement should initially be compared to the RMS measurement method (with all output setting being the same), which is a true rms measurement. If the output waveform is symmetrical, the two measurements will be approximately the same current value. If these two measurements are not approximately the same value, adjust the firing angle in such a way as to bring the two measurements closer together. **Although the PEAK and RMS measurement will never be the same value, the goal is to find the firing angle that will bring these two measurements as close together as possible in order to minimize DC offset.** See FIRING ANGLE MENU for adjustment of firing angle. The method of current measurement is selected by pressing the soft key beneath the desired method. Pressing the softkey beneath EXIT will return the user to the previous menu. The default setting is PEAK.

SECTION IV INPUT AND OUTPUT CIRCUITS

1. INPUT:

- A. INPUT VOLTAGE:** The AVO International Circuit Breaker Test Sets are designed to operate on a single phase voltage source. If the nominal rated voltage source is not available, or if use at various locations requires the capability to operate the test set from several different input voltages an optional input autotransformer may be used (see Bulletin in Section I for description).
- B. INPUT LEADS:** The power source must have sufficient capacity to maintain RATED input voltage at the INPUT terminals of the test set. All units are supplied with 15 foot 2 / 0 input cables with connectors on one end. This is done in an effort to provide a locking input connector, for safety purposes, along with input cables that are appropriate for a minimal amount of voltage drop from the input source to the input terminals of the test set. Although the test sets are designed to operate satisfactorily at 95-105% of rated voltage, any drop in voltage below RATED at the input terminals will result in a proportional decrease in the maximum available output.

NOTE: To achieve published output currents, the rated input voltage must be maintained at the test set terminals during the test.

- C. GROUNDING:** For safety, ground wires must be connected to the test set chassis in order to energize the test set. One ground lead must be connected to the ground terminal located just below the input plug to system ground. The size of the conductor should be not less than 6 AWG. Due to the special ground interlock circuit, a second lead must be connected from the green GND binding post to a separate, but compatible system ground. This will insure that a ground has been achieved and allow the test set to be energized.

D. SAFETY PRECAUTIONS:

CAUTION

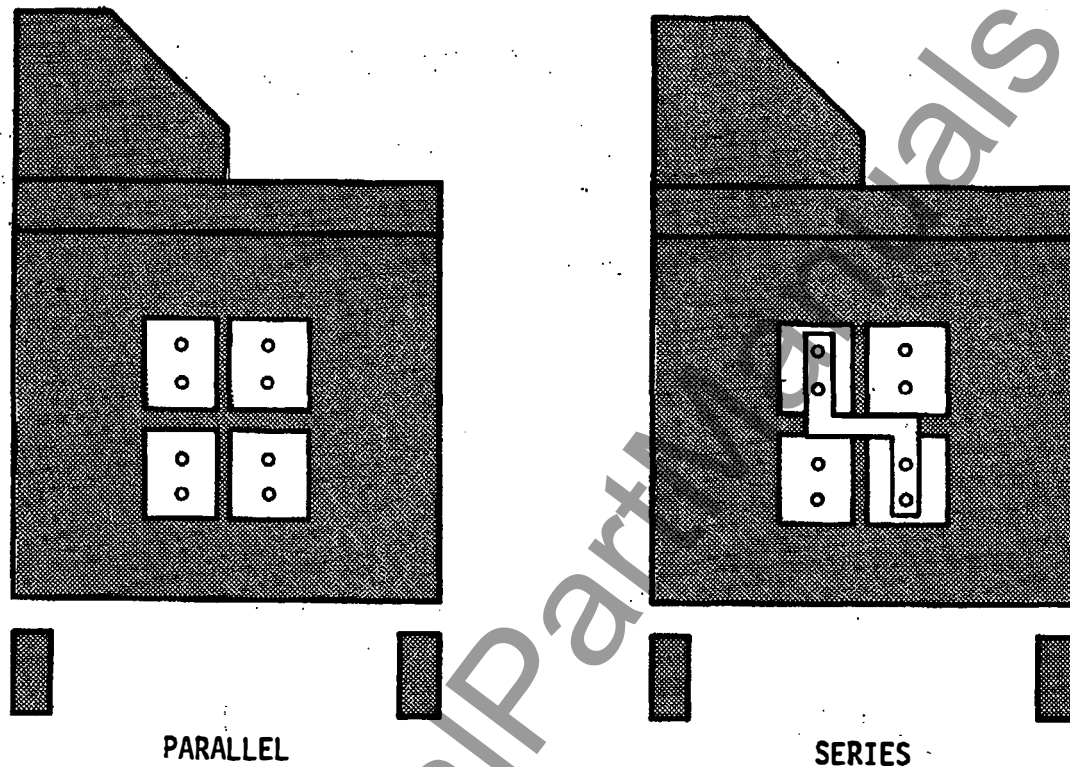
For safety of the operator, it is absolutely essential that the test set be properly and effectively grounded.

2. OUTPUT:

- A. SELECTION OF OUTPUT CONNECTIONS:** Two output connections, parallel and series, provide various voltage and current ratings to adapt AVO International Circuit Breaker Test Sets to a wide variety of test circuit impedances.

The test sets can be operated most efficiently by utilizing the parallel connection, which provides the HIGHEST CURRENT rating consistent with being able to obtain the desired test current. In this way, finer adjustment can be obtained by making maximum use of the variable autotransformer range. Even the smallest currents can be obtained from the parallel connection. The series connection should be used only when testing high impedance devices where the parallel connection does not

have sufficient voltage to "push" the desired test current through the device. The operator should start with the parallel connection and move to the series connection only when necessary. To operate the test set in the parallel connection does not require any changes be made by the operator. However the test set in series requires that a special adapter be placed on the output stab adapter boards to complete the series connection. See figures below.



NOTE: When the output of the test set is in a series configuration, cabling must be used to connect the output of the test set to the test specimen.

- B. OUTPUT CONNECTIONS:** Both models DDA-3000/6000 Test Sets are equipped with an AVO International Stab Adapter Board and AVO International CBS-1 and CBS-2 Stab Sets which accommodate direct engagement of many drawout type circuit breakers to the test set without the use of leads. Additionally, stabs are available for breakers not accommodated by the CBS-1 and CBS-2 stabs. Contact the factory for further details or refer to the specification section.

When testing devices which cannot be connected directly to the stabs of the DDA-3000/6000 Series Test Sets, it will be necessary to use test leads. When using high current test leads, it may be necessary to connect the output of the test set in series (see Section IV, 2, A on PARALLEL AND SERIES OPERATION). The following information on the selection of output leads will provide the user with a guide for choosing the proper test leads for his application.

Due to the voltage drop from the inductive reactance of the test circuit, a significant

loss of current will result for each inch of test lead. Therefore, when choosing test leads, the length and size of leads chosen will determine the maximum available test current. It is worthwhile to sacrifice cross section of test leads for the sake of reducing length. Every inch of lead that can be eliminated provides a worthwhile increase in available test current. Heating is not a significant problem in testing, even though the leads become hot. The use of 4/0 welding or motion picture cable is convenient for constructing test leads. Paralleling of sufficient cables provides higher test currents. Each cable can be fitted with a compression lug on each end, then bolted to the output terminals or stab board of the test set and the breaker.

The two cables between the test set and the breaker should be twisted together or bundled with tape or cord to maintain the close proximity which minimizes inductive reactance.

It is sometimes necessary to use bus bar in order to obtain the desired maximum current. When using bus bar, the buses should be run parallel and kept as close to one another as possible.

C. DUTY RATINGS AND OVERLOAD CAPACITIES:

AVO International equipment is rated on a continuous duty basis as described by NEMA for test equipment in intermittent service; that is, 30 minutes ON followed by 30 minutes OFF. This means that, the equipment can supply rated output current for a maximum period of 30 minutes ON provided a 30 minute cooling OFF period follows. This is a satisfactory basis of rating for testing of circuit breakers and primary injection testing of relay and current transformers. When AVO International equipment is being used for heat runs on cables, bussbars, terminations, etc., the 30 minute ON time may be exceeded. In such cases the output current should be limited to 70 percent of the rated output current and may be continued for an indefinite time.

In addition to the continuous duty rating defined above, all units have considerable short-time overload capability. Duration of the overload is governed by thermal considerations within the test set. The maximum current available is determined essentially by the impedance of the load. The duty cycles of the DDA-3000/6000 series is as follows:

**DUTY CYCLES ON DDA-3000/6000 SERIES 60 HZ
CIRCUIT BREAKER TEST SETS
(Current Rating Through Circuit Breaker)**

DDA-3000

<u>CURRENT</u>	<u>TIME ON</u>	<u>TIME OFF</u>
3,000 A	Continuous	N/A
4,500 A	30 min.	30 min.
6,000 A	15 min.	45 min.
15,000 A	2 min.	60 min.
30,000 A	5 sec.	12 min.

DDA-6000

<u>CURRENT</u>	<u>TIME ON</u>	<u>TIME OFF</u>
4,500 A	Continuous	N/A
6,250 A	30 min.	30 min.
10,000 A	15 min.	45 min.
30,000 A	2 min.	60 min.
60,000 A	5 sec.	12 min.

THERMAL SET POINTS*

Normal: 72° to 80°F

Warning: 160 to 190°F

Shutdown: 191 to 240°F

*Temperature measured at output stabs adapter plates.

**DUTY CYCLES ON DDA-3000/6000 SERIES 50 Hz
CIRCUIT BREAKER TEST SETS
(Current Rating Through Circuit Breaker)**

DDA-3001/3002

<u>CURRENT</u>	<u>TIME ON</u>	<u>TIME OFF</u>
2,964 A	Continuous	N/A
4,446 A	30 min.	30 min.
5,928 A	15 min.	45 min.
14,820 A	2 min.	60 min.
29,640 A	5 sec.	12 min.

DDA-6001/6002

<u>CURRENT</u>	<u>TIME ON</u>	<u>TIME OFF</u>
4,446 A	Continuous	N/A
6,175 A	30 min.	30 min.
9,880 A	15 min.	45 min.
29,640 A	2 min.	60 min.
59,280 A	5 sec.	12 min.

THERMAL SET POINTS*

Normal: 22.2 to 26.7°C

Warning: 71.1 to 87.8°C

Shutdown: 88.3 to 115.6°C

*Temperature measured at output stab adapter plates.

SECTION V

1. TEST PROCEDURES FOR TESTING OF MOTOR OVERLOAD RELAYS

Always refer to the manufacturer's literature applicable to the particular overload relay before testing. The test operator should be familiar with the operating characteristics of the relay, the tolerances applicable to the operating characteristics and any means of adjusting the relay.

The test usually performed on these devices is to verify the time delay characteristics of the relay when subjected to an overload condition. One test point is usually suggested to establish whether the relay is operating correctly and within the band of the time-current curve for the relay. The suggested test current is three times (3x) the normal current rating of thermal overload relays or three times (3x) the pick-up current (setting) of magnetic overload relays.

It is, of course, easiest to make the connections and perform the tests on the relays if they are removed from the starter. However, it is not necessary to remove the relay as long as the power circuit is de-energized and the test leads can be connected to the device. The high current leads from the test set to the relay under test should be kept as short as possible and should be twisted to minimize losses caused by inductive reactance.

Run the test and note the time required for the overload relay to trip. If the tripping time exceeds the manufacturer's recommended value, or if the relay does not trip at all, the relay may not be protecting the motor properly. If the relay operates too quickly, it may result in unnecessary nuisance trips. It should be remembered that these devices operate over a wide band and precise results should not be sought. A tolerance of $\pm 15\%$ is usually acceptable for electromechanical devices.

If a thermal overload relay is not operating properly, tripping too soon or too late, remove the heater element. Note its type, rating, etc., and compare with manufacturer's data for operating characteristics of the motor. If correct for the application, substitute a new heater of the same rating and retest. If either under- or over-sized heater elements are being used, replace with the proper size heater and retest.

If a magnetic overload relay is not operating properly, refer to the relay manufacturer's literature for instructions on making adjustments of the time delay. If the relay is operating improperly, it also may be desirable to verify the pickup point (minimum operating point) of the relay. To perform this test, it is necessary to disengage the time delay feature of the overload relay. Refer to the manufacturer's literature for detailed instructions.

TESTING OF TIME DELAY:

1. Connect the test set to a suitable source of power. Be sure that the **ON/OFF** Switch on the test set is **OFF**.
2. Make sure the motor circuit is de-energized.
3. Connect the output of the test set to the terminal of the heater of operating coil to be tested. (See Section IV, 2, B - SELECTION OF OUTPUT CONNECTION).
4. Connect a set of light leads from the terminals marked **TIMER STOP** to the control circuit contacts of the relay being tested.
5. Turn test set's **ON/OFF** Switch "**ON**". The Control Panel Display should illuminate.
6. Set up of controls before testing:

CONTROL

POSITION

Circuit Breaker

ON

OUTPUT SELECTOR Switch

1

VERNIER CONTROL

Zero (counterclockwise)

OUTPUT MODE

PULSE

TIMER STOP MODE

N.O. or N.C... Selection that is most appropriate for the **TIMER STOP** Contacts being used.

Ammeter MODE

MEMORY. Also set to Parallel or Series depending on output configuration.

AMMETER RANGE

So that test current can be read in the proper range of the ammeter

VOLTMETER CIRCUIT Selection

As desired, depending on voltage to be measured

7. Set the desired test current by rotation of the VERNIER CONTROL, and then pressing the START button per the following procedure.

NOTE: Depending on the position of the OUTPUT SELECTOR Switch, the current may be increased by either clockwise or counter clockwise rotation of the VERNIER CONTROL (refer to chart of OUTPUT RANGES). For example, if the desired test current is 7500 amperes, the proper procedure would be to start with the OUTPUT SELECTOR Switch in position 1 and increase the VERNIER CONTROL from "0" toward "100". However, if the impedance of the device is such that you cannot get 7500 amperes at "100" on the VERNIER CONTROL with the tap selector on position "1", switch the OUTPUT SELECTOR Switch to position number 2. On TAP position #2 the red scaling is used to increase the output current. Rotate the VERNIER CONTROL counterclockwise toward "red 100". If at full rotation of the VERNIER CONTROL, the desired current is not obtained, turn the OUTPUT SELECTOR Switch to the next higher position and repeat the procedure until the desired test current is reached. Since the PULSE OUTPUT MODE is selected, the output will only stay energized for programmed number of cycles (Default is 5 cycles. See PULSE DURATION MENU). The ammeter display will hold the reading of the amperage set. Continue until the desired current is achieved. If at the last position the desired test current is not reached, connect the output of the test set in series (See SELECTION OF OUTPUT CONNECTION, Section IV, 2, A.). Switch the Ammeter PARALLEL/SERIES Switch to the SERIES position, return the OUTPUT SELECTOR Switch to position 1 and repeat the above procedure until the desired current is achieved.

8. Select the MAINTAINED OUTPUT MODE.
9. Select the CONTINUOUS AMMETER MODE.
10. Wait several minutes to allow the overload relay to cool or the plunger to settle in the dash pot.
11. Initiate current by pressing START button. The timer will stop and the output will automatically de-energize when the overload relay operates.

NOTE: Check the ammeter reading during the test for accuracy. Minor adjustments may be made with the OUTPUT CONTROL while the test is in progress.

12. Record the results and compare them to the manufacturer's specifications.

2. TEST PROCEDURE FOR TESTING OF MOLDED CASE AND LOW VOLTAGE POWER CIRCUIT BREAKERS

Always refer to the manufacturer's literature applicable to the particular circuit breaker before testing. The test operator should be familiar with the operating characteristics of the circuit breaker, the tolerances applicable to the operating characteristics and any means for adjusting the circuit breakers.

Molded case breakers are usually tested for verification of the time delay characteristics and the minimum operating point (pick-up point) of the instantaneous element. Low voltage power circuit breakers with solid state or electro-mechanical trip devices are usually tested for verification of the time delay characteristics of the long time delay and short time delay elements and for the minimum operating point (pick-up point) of the instantaneous element. Each circuit breaker pole should be tested independently so that all trip devices are tested.

One test point is usually sufficient to establish whether the long time delay or short time delay element is operating properly and within the band width of its time-current characteristics. For molded case breakers the suggested test current of the time delay element is three times (3x) the current rating of the breaker; for low voltage power circuit breakers, suggested test current is three times (3x) the pick-up setting of the long time delay element and one and one half times (1.5x) the short time delay setting where the type of trip characteristics is incorporated on the trip device.

On both molded case and low voltage power breakers, the instantaneous element is tested to verify the minimum current necessary to cause the breaker to consistently trip instantaneously.

When testing instantaneous trip elements, run the test below to find the minimum current required to trip the breaker instantaneously and compare to the setting. Remember the instantaneous elements have an operating tolerance of from $\pm 10\%$ to $\pm 25\%$ of setting, depending on the particular trip device. On molded case circuit breakers, it is suggested that the time delay elements be tested before any instantaneous tests are performed.

Most modern low voltage power circuit breakers are of the "draw-out" type. These breakers should be tested using AVO International Model DDA-3000/6000 equipped with the appropriate stabs to directly connect the breaker to the test set. When testing molded case breakers or any other breaker where leads are required to connect it to the test set, the leads should be as short as possible and twisted to minimize losses. See section on Output Leads.

TESTING OF TIME DELAY:

1. Connect the test set to a suitable source of power. Be sure that the **ON/OFF** Switch on the test set is **OFF**.
2. Make sure the line side circuit of the breaker to be tested is de-energized or disconnected. Close the breaker to be tested.
3. Connect the test set output terminals to one pole of the breaker to be tested. (See SELECTION OF OUTPUT CONNECTION Section IV, 2, A.)
4. If the N.O. or N.C. TIMER STOP MODEs are to be used, connect a set of light leads from the TIMER STOP terminals to another pole of the breaker under test or the desired auxiliary contact.
5. Turn test set **ON/OFF** circuit breaker **ON**. The Control Panel Display should illuminate.
6. Set up of controls before testing:

CONTROL

POSITION

Circuit Breaker

ON

OUTPUT SELECTOR Switch

1

VERNIER CONTROL

Zero (counterclockwise)

OUTPUT MODE

PULSE

TIMER STOP MODE

If desired, the N.O. or N.C. selections may be used to control timer operation. Otherwise use the C.A. (Current Actuate) selection.

Ammeter MODE

MEMORY and PARALLEL.

AMMETER RANGE

Select a range such that the test current can be read as near full scale as possible.

VOLTMETER CIRCUIT
Selection

As desired, depending on voltage to be measured

7. Verify proper ammeter range.
8. Set the desired test current by rotation of the VERNIER CONTROL, and then pressing the START button per the following procedure.

NOTE: Depending on the position of the OUTPUT SELECTOR Switch, the current may be increased by either clockwise or counter clockwise rotation of the VERNIER CONTROL (refer to chart of OUTPUT RANGES). For example, if the desired test current is 7500 amperes, the proper procedure would be to start with the OUTPUT SELECTOR Switch in position 1 and increase the VERNIER CONTROL from "0" toward "100". However, if the impedance of the device is such that you cannot get 7500 amperes at "100" on the VERNIER CONTROL with the TAP Selector on position #1, switch the OUTPUT SELECTOR Switch to position number 2. On TAP Position #2 the red scale is used to increase the output current. Rotate the VERNIER CONTROL counterclockwise toward "0". If at full rotation of the VERNIER CONTROL, the desired current is not obtained, turn the OUTPUT SELECTOR Switch to the next higher position and repeat the procedure until the desired test current is reached. Since the PULSE OUTPUT MODE is selected, the output will only stay energized for programmed number of cycles (Default is 5 cycles. See PULSE DURATION MENU). The ammeter display will hold the reading of the amperage set. If at the last position the desired test current is not reached, connect the output of the test set in series (See SELECTION OF OUTPUT CONNECTION, Section IV, 2, A). Switch the Ammeter PARALLEL/SERIES Switch to the SERIES position; return the OUTPUT SELECTOR Switch to position 1 and repeat the above procedure until the desired current is achieved.

9. Select the MAINTAINED OUTPUT MODE.

10. Select the CONTINUOUS AMMETER MODE.

11. Initiate unit by pressing START button. The timer will stop and output will automatically de-energize when the circuit breaker operates.

NOTE: Check the ammeter reading during the test for any change in output setting. Minor adjustments may be made with the output control while the test is in progress.

12. Record the results and compare them to the manufacture's specifications.

TESTING OF INSTANTANEOUS PICK-UP:

1. Connect the test set to a suitable source of power. Be sure that the **ON/OFF** Switch on the test set is **OFF**.
2. Make sure the line side circuit of the breaker to be tested is de-energized or disconnected. Close the breaker to be tested.
3. Connect the output of the test set to one pole of the breaker to be tested (see **SELECTION OF OUTPUT CONNECTION**, Section IV, 2, B).
4. Connect a set of light leads from the binding post marked **TIMER STOP** to another pole of the breaker being tested.

NOTE: Not applicable when testing single-pole breakers using the C.A. **TIMER STOP** MODE.

5. Turn test set circuit breaker **ON**. The front panel display should illuminate.

NOTE: To set up controls, see "SETUP OF CONTROLS" before testing in the previous section.

6. Select the proper ammeter range so that the instantaneous pick-up current of the instantaneous element can be read as near to full scale as possible.
7. Place the ammeter mode switch in the **MEMORY**. (See Section III, 2, E to program pulse duration.)
8. Rotate **VERNIER CONTROL** while alternately pressing the **START** button until the circuit breaker under test trips instantaneously. Read ammeter for value of current required to trip breaker.

If breaker does not trip instantaneously with **VERNIER CONTROL** fully rotated, turn **OUTPUT SELECTOR** Switch to next higher position and repeat procedure (refer to procedure **NOTE** under **TESTING OF TIME DELAY** in the previous section).

If at the last position the required test current still is not reached, connect the test set's output in series. (See **SELECTION OF OUTPUT CONNECTION**, Section IV, 2, B). Switch the **AMMETER MODE** selection from **PARALLEL** to **SERIES** position and repeat the procedure.

3. MAINTENANCE OF PROTECTIVE APPARATUS MAINTENANCE OF MOTOR OVERLOAD RELAYS

APPLICATION:

The primary function of the motor overload relay is to prevent operation of a motor for too long a period of time to prevent damage to that motor when an overload condition exists.

In general, motor starters are applicable to a given horsepower range of motors. The voltage and current requirements of the application will "size" the starter under NEMA requirements, but the actual starting current, running current, ambient temperature and severity of atmospheric conditions will determine the overload relay rating required to protect the motor without nuisance tripping.

Selection of the properly rated overload relay heater or coil can be made by reference to tables or charts supplied by the manufacturer of the overload relays. Whenever a motor trips out it is poor practice to indiscriminately install a larger heater or coil, since the motor may actually be working under an overload condition or the overload relay may be operating improperly. Installing a larger heater or coil could allow an overloaded motor to continue to run, resulting in deterioration of the motor insulation and reduction of motor life. Therefore, careful analysis should be made as to the cause of the trip before changing the rating of the overload relay heater. Operating characteristics of the motor overload relay should be verified at regular intervals. The inspection and test interval can vary widely depending on the type of service involved, the importance of the motor to process or production, and environmental conditions.

TYPES:

Motor overload relays incorporate an element which actuates a set of contacts connected to the motor control circuit. These contacts open the circuit of the holding coil in the motor starter and interrupt the power to the motor.

In general, there are three types of motor overload relays in use:

1. Thermal - melting alloy or solder pot
2. Thermal - bimetallic strip
3. Electromagnetic

In thermal type relays, time-current characteristics are obtained by the thermal properties of the melting alloy or bimetallic strip. In the magnetic type, a damped plunger or moving iron device is used to produce time delays.

1. Thermal - melting alloy or solder pot:

In this type, tripping is the result of heat generated by the motor overload current passing through a "heater" in the overload relay. This overload relay consists of a brass shaft which is surrounded by solder. Fixed to one end of the shaft is a small ratchet wheel. As long as the solder is solid, this assembly is immobile. When the motor control circuit contacts are closed, a spring in the motor overload relay is held

compressed by the immobility of the ratchet wheel. An overload condition in the motor increases the current through the heater, thus melting the solder allowing the ratchet wheel to move, and releasing the energy in the spring. This interrupts the circuit of the holding coil in the motor starter and shuts down the motor.

The starter may be reset only after the heater has cooled sufficiently to permit the solder to solidify and again make the ratchet and shaft immobile. Reset is usually accomplished by an external pushbutton on the face of the starter. Many motor overload relays offer a selection of either manual or automatic reset.

2. Thermal - Bimetallic strip:

This type uses a bimetallic strip—two pieces of dissimilar metal bonded together. An increase in heat will cause movement of the bimetallic unit and eventually open a set of contacts in the motor control, thus opening the holding coil circuit and shutting down the motor.

The principle of operation is the same as the melting alloy type. When the bimetallic element has cooled sufficiently, the motor control circuit may be reset either manually or automatically.

3. Electromagnetic:

In this type of motor overload relay, a damped plunger or moving iron device is used to produce the delays required and initiate the trip signal to the interrupting device. In the most common type of magnetic relay, movement of an armature or piston rod is delayed by a dashpot.

When the electromagnetic field produced by the operating coil is strong enough, the piston in the dashpot moves through the oil to trigger the opening of the relay contacts, shutting down the motor. Usually, magnetic overload relays with oil dashpots have facilities which permit adjusting their minimum operating current (pick-up point) and their time delay characteristics.

PLANNED MAINTENANCE PROGRAM:

A scheduled program for maintenance of motor overload relays consists primarily of "good housekeeping" in conjunction with visual inspections, tightening of electrical connections, and electrical testing. A brief outline is given below:

- 1. CLEAN** - All types of motor overload relays should be cleaned periodically to ensure continued, reliable operation. It is possible for dirt or dust created by conditions in the plant to prevent parts of the relay from moving. Also, these same conditions can prevent the proper dissipation of normal heat, resulting in unnecessary operation of thermal type overload relays.
- 2. TIGHTEN CONNECTIONS** - This is particularly important in thermal overload relays. Loose electrical connections can cause extra heat which may result in a nuisance operation of the relay.

3. **INSPECT HEATER SIZE** - Determine that the specified heater is used in thermal overload relays. Too often, oversized heaters are arbitrarily installed to eliminate unexplained trips. Actually, the original heaters may have oxidized over a period of time, becoming smaller in cross section. Then, the heat required to operate the relay is provided by a smaller amount of current than that intended by the original design. This may make the relay trip prematurely and the heater appear undersized.
4. **INSPECT SETTINGS** (Where applicable) - Most magnetic overload relays have adjustable settings for minimum operating current and time delay characteristics. These should be adjusted to the specified settings.
5. **TEST** - The motor overload relay should be subjected to a simulated overload and the tripping time measured. This time should be compared to the manufacturer's specifications of the relay's time-current curves to make certain that the relay is operating properly. A tolerance of $\pm 15\%$ is usually acceptable. If the relay's curves or specifications are not available, it is suggested that the Heat Damage Curve of the motor be used as a guide for maximum trip time at 300% of motor full load current.

4. MAINTENANCE OF MOLDED CASE CIRCUIT BREAKERS

DESCRIPTION:

The molded case circuit breaker essentially consists of two separate elements. One element is a set of contacts and suitable mechanical linkage for manual operation of the breaker as a switch in an electric circuit. The other element is a device to sense and react to an overload or short circuit. Normally, the time delay overload device is thermal and the instantaneous overload device, when supplied, is magnetic. Some newer styles include solid-state trip elements and operate very similar to low voltage power circuit breakers.

The thermal element uses a bimetallic strip—two pieces of dissimilar material bonded together. An overload causes an increase in heat which will result in moving the bimetallic unit due to the difference in heat expansion characteristics, releasing a latching spring which trips the circuit breaker.

A small percentage of molded case circuit breakers achieve their time delay through the use of an electromagnet, whose operation is opposed by a fluid filled dash pot. The magnetic element operates with no intentional time delay to provide instantaneous protection against high magnitude faults.

In small molded case circuit breakers, the instantaneous element is not adjustable as it is factory set and sealed. In larger molded case breakers, the instantaneous pickup of the trip may be adjustable and is set with an adjustment screw. This type breaker may be shipped from the factory with the instantaneous element set at maximum if the setting is not specified by the purchaser; therefore, it is necessary to check these adjustable instantaneous settings before putting the breaker in service.

PLANNED MAINTENANCE PROGRAM:

A scheduled program for maintenance of molded case circuit breakers consists primarily of "good housekeeping" in conjunction with visual inspections, tightening of connections and electrical testing. A brief outline is given below:

1. **CLEAN** - All types of molded case circuit breakers should be externally cleaned periodically so that the heat produced in normal operation can be dissipated properly. It is possible for dirt or dust caused by normal plant conditions to accumulate and prevent proper dissipation of heat, resulting in a nuisance operation of the breaker.
2. **TIGHTEN CONNECTIONS** - This is particularly important, because loose electrical connections will cause deterioration of the breaker terminals and an eventual phase to phase or phase to ground fault.
3. **TEST** - The molded case circuit breaker should be subjected to a simulated overload and the tripping time measured. This is important because after a period of inactivity, the overload device may become stiff or inoperable. The only way to determine this condition and eliminate the stiffness is to electrically operate the breaker on a periodic basis. Manually opening and closing the main contacts of the breaker does not move any of the mechanical linkage associated with the overload device. Testing may be as often as every 6 months or as long as every 3 or 4

years, depending upon conditions where the breaker is installed.

www.ElectricalPartManuals.com

5. MAINTENANCE OF LOW VOLTAGE POWER CIRCUIT BREAKERS

APPLICATION:

The low voltage power circuit breaker has a wide application and may be used to protect circuits up to 600 volts ac or 250 volts dc. These devices have essentially two separate elements. One element is a set of contacts with suitable mechanical linkage for operating the breaker as a switch. The other element is a device to sense and react to an overload or short circuit condition. Low voltage power circuit breakers are manufactured with either electro-mechanical or solid state trip devices.

1. **SOLID STATE TRIP ELEMENTS** - This type of breaker uses a sample of the load current to supply a signal to an electronic sensing element. When an overload or short circuit condition exists, the solid state sensing element sends a signal to a solenoid which releases the latching mechanism and trips the circuit breaker. This type eliminates the magnetic coil and dashpot mechanism of the electro-mechanical trip device.
2. **ELECTRO-MECHANICAL TRIP ELEMENTS** - Series tripped, direct acting low voltage power circuit breakers are tripped by the movement of an armature which strikes the trip bar of the breaker. The trip bar operates a latch which releases stored energy to rapidly open the breaker contacts. The armature of the trip unit is attracted to a pole piece through the magnetic field set up by current through a coil. The current through the coil is either the actual load current or the secondary output of a current transformer. For time delay the armature is restrained mechanically. Tripping time is a function of magnitude of current through the breaker.

Low Voltage Power Circuit Breakers are available with three types of tripping characteristics:

1. **LONG TIME DELAY** - The long time delay characteristic provides overload protection with typical time delays of approximately 10 -60 seconds at 300% of pickup.
2. **SHORT TIME DELAY** - The short time delay characteristic provides protection for short circuit or fault conditions. It is used whenever a small delay is necessary for coordination or selectivity with other protective devices. Typical delays are approximately 6-30 cycles.
3. **INSTANTANEOUS** - The instantaneous trip characteristic is used for short circuit or fault protection and has no intentional time delay.

PLANNED MAINTENANCE PROGRAM:

A scheduled program for maintenance of low voltage power circuit breakers consists primarily of "good housekeeping" in conjunction with visual inspection, tightening all connections and non-pivotal joints, and electrical testing.

1. **CLEAN AND TIGHTEN** - Low voltage power circuit breakers should be periodically cleaned, tightened and inspected. The manufacturer's instruction book for the breaker should be read thoroughly and their recommendations for lubricating and clearances should be followed closely.
2. **TEST** - The voltage power circuit breaker should be subjected to simulated overload conditions to verify that the breaker is operating within its specifications and tolerances. This is important because, after a period of time, vibration and environmental conditions can render the breaker inoperable. Manually opening or closing the main contacts of the breaker **does not "exercise"** the overload trip device.

[illegible]

Circuit No	Location	Breaker Mfg.	Breaker Type
1			
2			
3			
4			
5			
6			
7			
8			
9			
10			
11			
12			
13			
14			
15			
16			
17			
18			
19			
20			
21			
22			
23			
24			
25			
26			
27			
28			
29			
30			
31			
32			
33			
34			
35			
36			
37			
38			
39			
40			
41			
42			
43			
44			
45			
46			
47			
48			
49			
50			
51			
52			
53			
54			
55			
56			
57			
58			
59			
60			
61			
62			
63			
64			
65			
66			
67			
68			
69			
70			
71			
72			
73			
74			
75			
76			
77			
78			
79			
80			
81			
82			
83			
84			
85			
86			
87			
88			
89			
90			
91			
92			
93			
94			
95			
96			
97			
98			
99			
100			

Trip Device Mfg.

Trip Device Type

Long Time Delay Range

Short Time Delay Range

Instantaneous Range

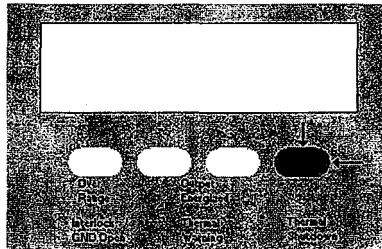
[illegible]

SECTION VI

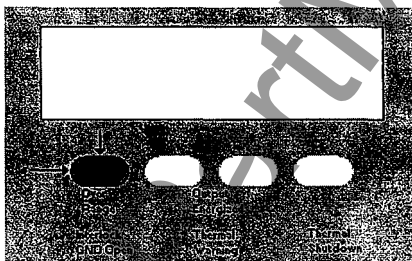
1. Trouble Shooting Note

If the Control Panel Display is too dim to read when the test set is initially turned on, perform the following:

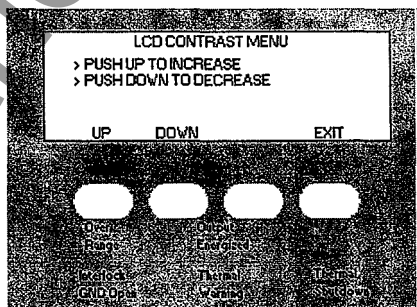
- A. Press the right hand menu softkey once.



- B. Press the left hand menu softkey until the display is appropriately illuminated.



- C. Press the right hand menu softkey (underneath the word exit) twice to return to the metering display.



2. SERVICE DATA

The test set utilizes straightforward circuits and components which require little or no service except for routine cleaning, tightening of connections, etc. The test set should be serviced in a clean atmosphere away from energized electrical circuits. The following maintenance is recommended:

1. Open the unit every six months and examine for:
 - a. dirt/dust
 - b. moisture
 - c. corrosion
2. Remove dirt/dust with dry, compressed air.
3. Remove moisture as much as possible by putting test set in a warm, dry environment.
4. As corrosion may take many forms, no specific recommendations can be made for its removal.
5. Check cable connections for solid connections (look for loose pin connections) and printed circuit boards for tightness.

REPAIR AUTHORIZATION

If factory service is required or desired, contact the factory for return instructions.

A Repair Authorization & (RA) number will be assigned for proper handling of the unit when it arrives at the factory.

If desired, a letter with the number and instructions can be provided.

Provide the factory with model number, serial number, nature of the problem or service desired, return address, your name, and where you can be reached should the factory need to contact you.

A purchase order number, cost limit, billing, and return shipping instructions may also be provided if desired.

National Bureau of Standards traceable calibration and certification of two types is available, if desired, at additional cost.

Class One: A certificate is provided verifying the traceability and calibration of the equipment.

Class N: That which is required for nuclear power plants. A certificate of traceability and calibration along with "as found" and "as left" data are provided.

If an estimate is requested, provide the name and contact information of the person with approval/disapproval authority.

Pack the equipment appropriately to prevent damage during shipment. If a reusable crate or container is used, the unit will be returned in it if in suitable condition.

Put the RA number on the address label of the shipping container for proper identification and faster handling.

NOTE: Ship the equipment without instruction manuals or nonessential items such as test leads, spare fuses, etc. These items are not needed to conduct repairs. Do ship the equipment with all interconnect cables, etc. which make the unit operational.

Preparation for Reshipment

Save the shipping container that your unit came in. The shipping container your unit came in is designed to withstand the normal bumps and shocks of shipping via common commercial carrier. For example, you may wish to reship your unit to AVO International for annual calibration certification.

Warranty Statement

AVO International warrants to the original purchaser that the product is free from defects in material and workmanship for a period of one (1) year from date of shipment. This warranty is limited and shall not apply to equipment which has damage, or cause of defect, due to accident, negligence, unauthorized modifications, improper operation, faulty installation by purchaser, or improper service or repair by any person, company or corporation not authorized by the AVO International.

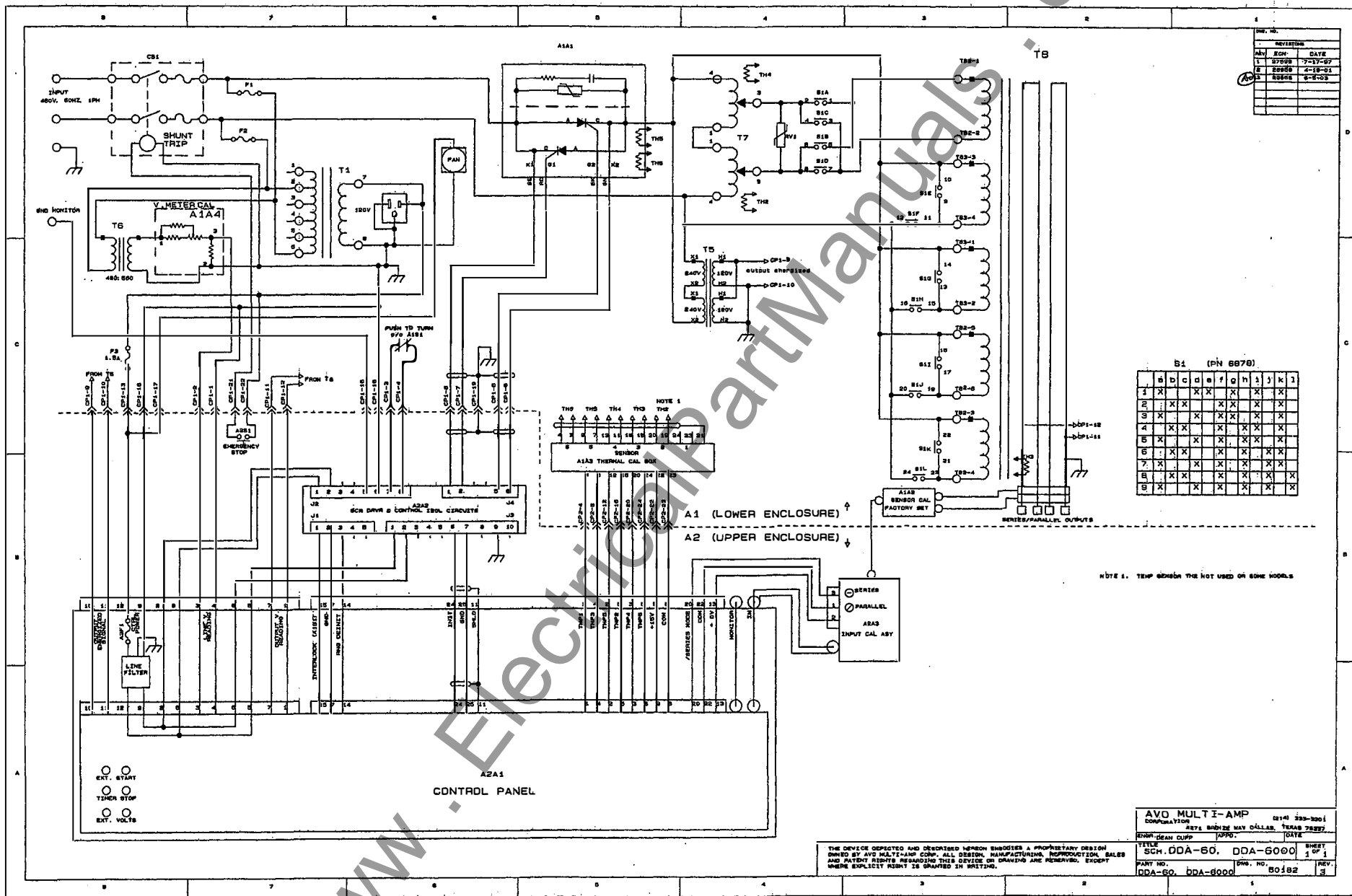
AVO International will, at its' option, either repair or replace those parts and/or materials that it deems to be defective. Any costs incurred by the purchaser for the repair or replacement of such parts and/or materials shall be the sole responsibility of the original purchaser.

THE ABOVE WARRANTY IS IN LIEU OF ALL OTHER WARRANTIES, EITHER EXPRESSED OR IMPLIED ON THE PART OF THE AVO INTERNATIONAL, AND IN NO EVENT SHALL THE AVO INTERNATIONAL BE LIABLE FOR THE CONSEQUENTIAL DAMAGES DUE TO THE BREACH THEREOF.

REPLACEABLE PARTS LIST
(60HZ) DDA-6000, CB8160 W/ DDA-60

REF	PART NUMER	DESCRIPTION	QUANTITY
A1 (LOWER ENCLOSURE)			
A1A1	9327	SCR ASSEMBLY	1
A1A2	6216	SENSOR CAL BOX (FACTORY CAL)	1
A1A3	6234	TEMPERATURE CAL ASY	1
A1A4	8106	VOLTMETER CAL ASY (LINE VOLTAGE)	1
F1,F2	9377	FUSE, 6.0A, FNQ/ATQ	2
F3	950	FUSE, 1.5A , 250 V, MDA	1
RV1	5263	MOV, TRANSIENT PROTECTOR	1
S1	6878	SWITCH, OUTPUT TAP	1
T1	10885	TRANSF., CONTROL 480V TO 120V	1
T2	N/A		
T3	N/A		
T4	N/A		
T5	634	TRANSF., 480:120 OUTPUT ENGR'D0 MON.	1
T6	5533	TRANSF., 480:560, LINE VOLTAGE MONITOR	1
T7	50876	TRANSF., VARIABLE, ASY	1
T9	5323	TRANSF., OUTPUT ASY	1
TH1	N/A		
TH2-6	5544	THERMISTOR	5
X1	5581	TRANSDUCER, CURRENT MONITOR	2
A2 (UPPER ENCLOSURE)			
A2A1	15980	CONTROL PNL, DDA, HIGH CURRENT 60HZ	1
A2A2	17291	SCR DRIVER/ CONTROL ISOLATION BOARD	1
A2A3	50032	INPUT BOX, DDA-30/60/3000/6000	1
A2S1	8049	EMERGENCY STOP SW. N.O.	1

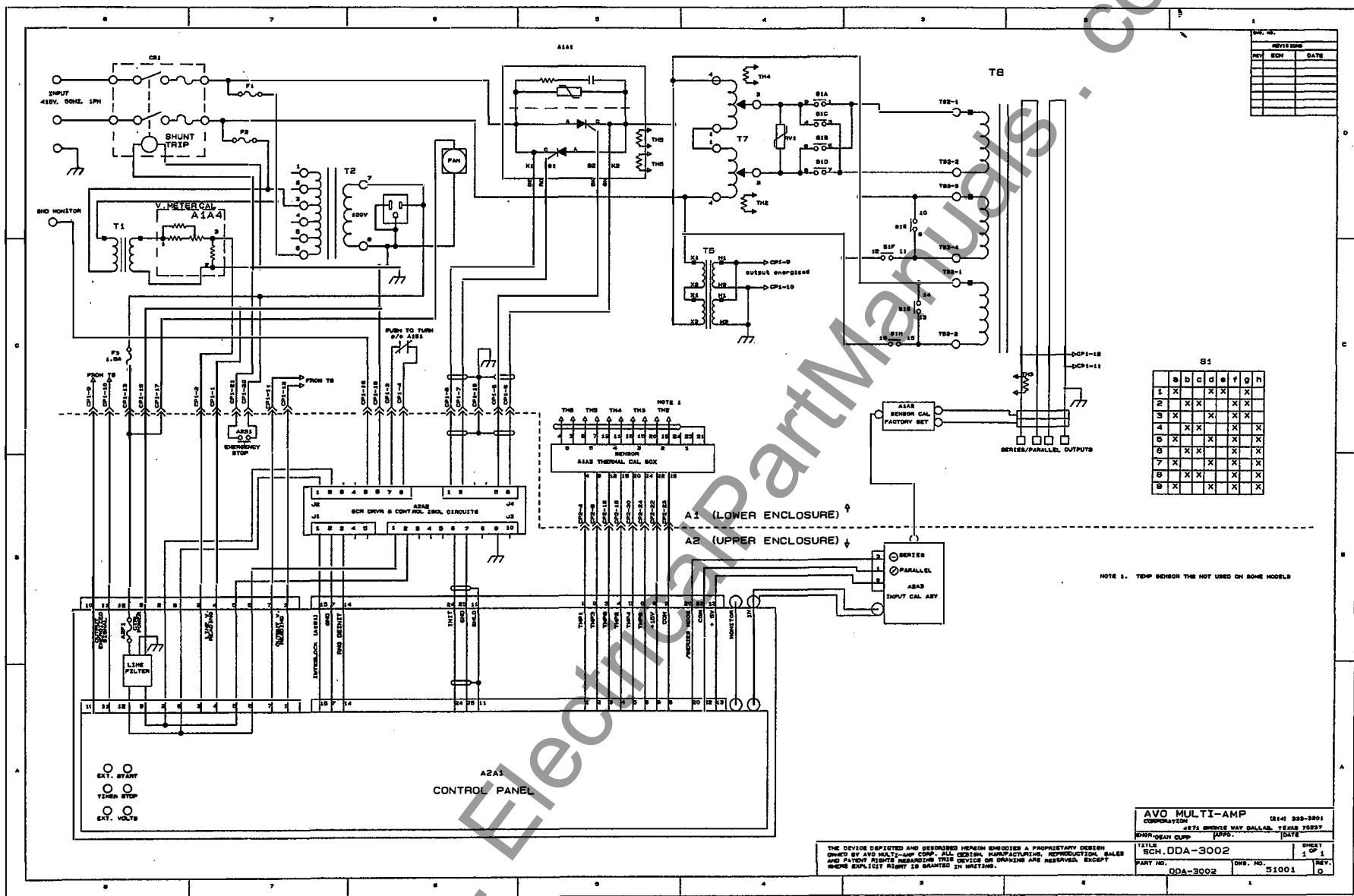
AVO INTERNATIONAL
title: REPLACEABLE PARTS LIST
DDA-6000, CB8160 W/DDA-60
date: 7-18-97
dwg no.: DWG 50986 rev, 0



50182

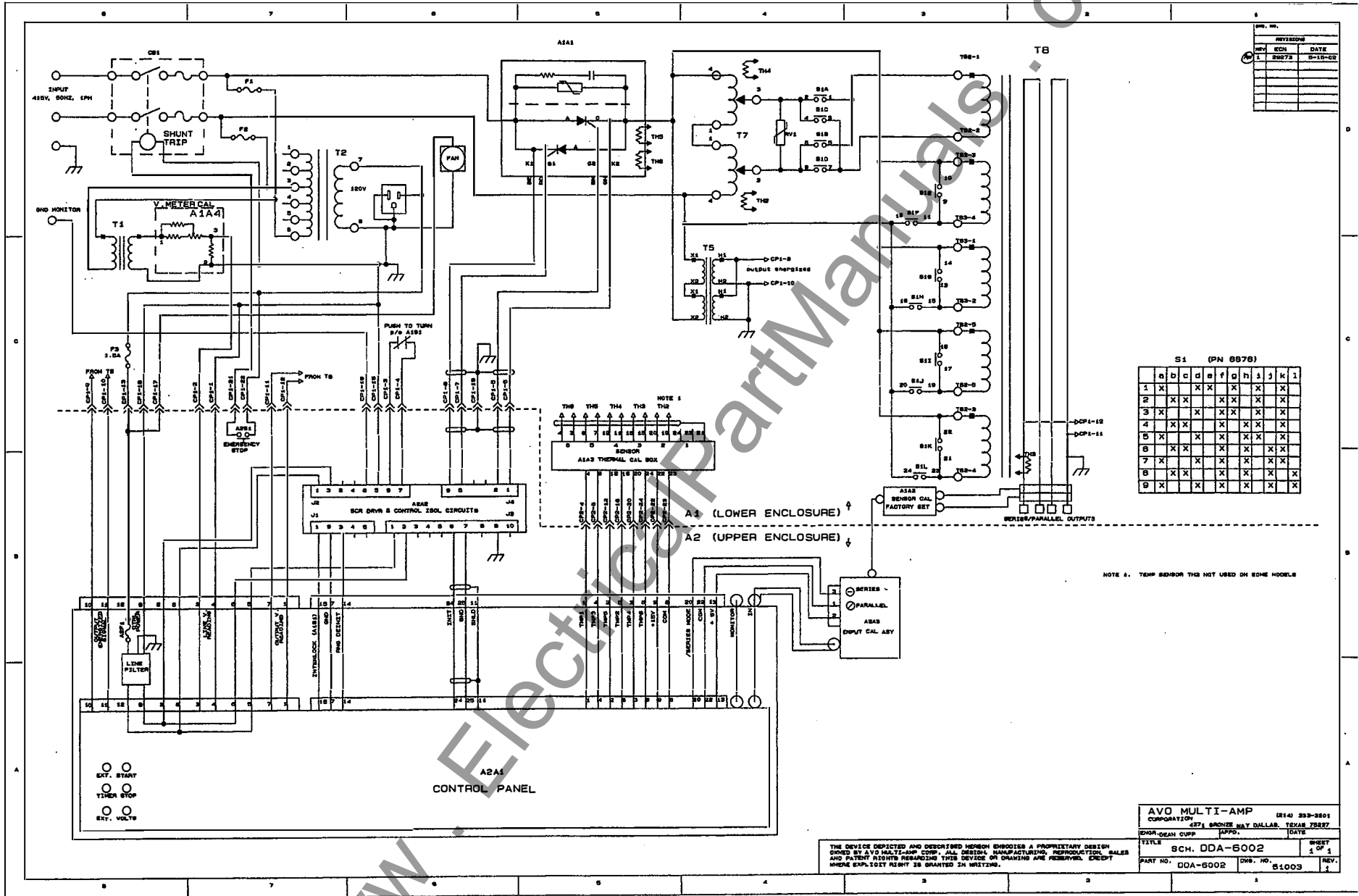
1 of 1

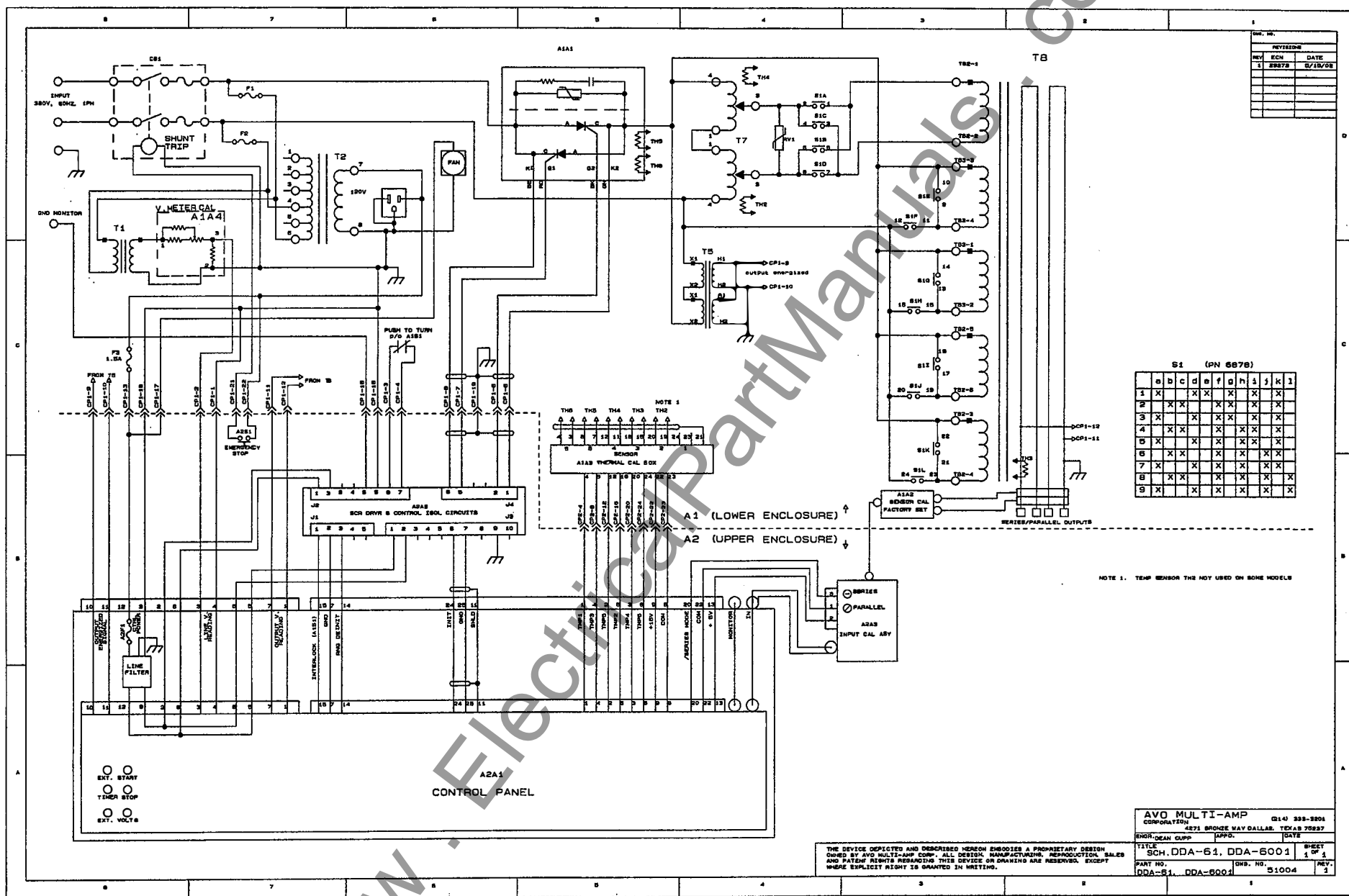
Rev 3



51001
1 of 1
Rev. 0







51004

1 of 1

Rev. 1

