



# watthour meter sockets and mountings

for indoor or outdoor service

descriptive  
bulletin

42-800

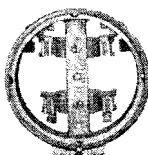
page 1

**sockets:**  
for socket-type meters

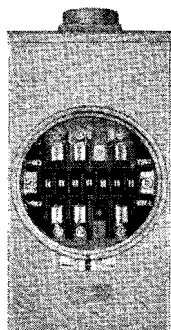
**round:**  
series S



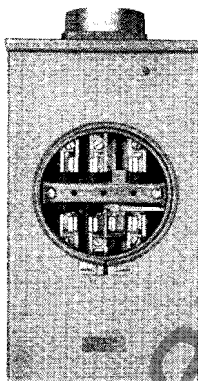
**ring:**  
series S



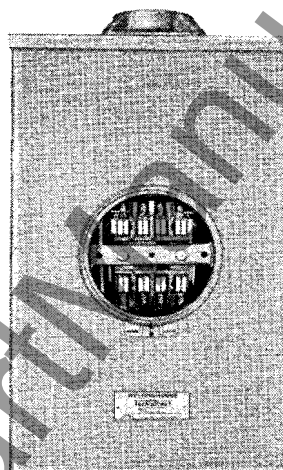
**trough:**  
series ST



**high-capacity:**  
series STU

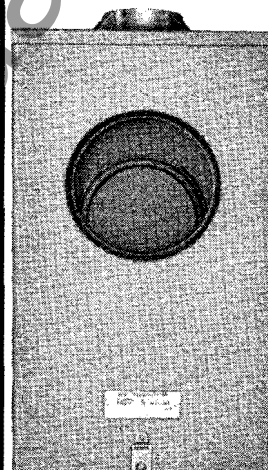


**TRANSOCKET**  
series STS



**mountings:** for  
bottom-connected meters

**TRANS-A-MOUNT**  
series STA



## application

**sockets** A complete line of meter sockets with standardized dimensions and terminal arrangements to accommodate socket-type meters of all manufacturers.

All sockets are for indoor or outdoor service. Meter and socket together form a single armorclad, weatherproof and tamperproof combination that can be sealed under a single seal. Once socket is installed, meter can be removed for testing or replacement without disconnecting any wiring.

**mountings** Trans-A-mount mountings are a new line of enclosures for bottom-connected meters. Similar to Transocket meter sockets, they are supplied complete with current transformers, can be mounted indoors or outdoors, are completely tamperproof and can be sealed under a single seal.

## in this bulletin:

	page
selector guide	2
round sockets	3
ring sockets	3
trough sockets	4
high-capacity sockets	5
Transocket sockets	6
Trans-A-mount mountings	7
ratings, dimensions	8
terminals, wiring	10
accessories	12

January, 1953

supersedes catalog section 42-810, pages 1-4, dated March 30, 1951; page 5, dated December 14, 1951; supplement page 4.1, dated June 27, 1951  
mailed to: E43-SB; D65-SB; C29-SF, G, H, Z, J, K, L, M

**selector guide****watthour meter applications +**

type of service	meter type	meter for self-contained meters for transformer type meters★								
		round socket	ring socket	trough socket	high capacity socket	round socket	ring socket	trough socket	Transocket socket	Trans-A-mount mounting
1 phase 2 or 3 wire	CS□	S	S	...	STU	...	...	...	...	...
	CS▲	...	...	...	...	S-5	S-5	...	STS	...
	CS▼	...	...	...	...	S-6	...	...	STS	...
	CA▼	...	...	...	...	...	...	...	...	STA
1, 2, 3 phase or network 3 wire	CS-2	...	S-2	ST-2●	...	...	S-2	ST-2●	STS-2	...
	CS-5	S-5	S-5	ST-5	STU-5	...	...	...	...	...
	CA-2	...	...	...	...	...	...	...	...	STA-2
2 phase, 5 wire	CS-2	...	...	...	...	...	S-2	ST-2	...	...
	CS-10	...	S-10	ST-10	...	...	S-10	ST-10	...	...
3 phase, 4 wire Y	CS-2	...	...	...	...	...	S-2●	ST-2●	STS-8●	...
	CS-3	...	S-8	ST-8	STU-8	...	S-3	ST-3	STS-3	...
	CS-8	...	S-8	ST-8	STU-8	...	S-3	ST-3	STS-8‡	...
	CA-3	...	...	...	...	...	...	...	...	STA-3
	CA-8	...	...	...	...	...	...	...	...	STA-8
3 phase, 4 wire Δ	CS-2	...	...	...	...	...	S-2+	ST-2+	STS-7	...
	CS-7	...	S-8	ST-8	STU-8	...	S-3	ST-3	STS-3	...
	CS-9	...	S-8	ST-8	STU-8	...	S-9	ST-9	STS-9	...
	CA-2	...	...	...	...	...	...	...	...	STA-7
	CA-7	...	...	...	...	...	...	...	...	STA-9
	CA-9	...	...	...	...	...	...	...	...	STA-3
totalizing 1 phase and 3 phase	CS-4	...	S-9	ST-9	...	...	S-9	ST-9	...	...
	CS-6	...	S-10	ST-10	...	...	S-10	ST-10	...	...

**time-switch meter applications**

time-switch meter type	time switch type	socket type	mounting
TCS-111	TS-11	S	vertical or horizontal
TCS-121	TS-12	...	horizontal
TCS-2	TS-21	...	...
TCS-211	.....	S-5■	vertical
TCS-221	.....	S-6■	vertical

**demand meter applications**

Westinghouse socket-type demand meters (series CS-W, CSH, QCS, etc.) employ the same sockets as their corresponding types of watthour meters.

Bottom-connected thermal demand meters (series CAH, KCA, QCA, etc.) require special styles of Trans-A-mount mountings; see price list 42-020 for available styles. Indicating demand meters (series CA-W) employ the same Trans-A-mount as their equivalent series CA meters.

+ see application chart in descriptive bulletin 42-100 for complete details

★ sockets must have circuit-closing devices when used with instrument transformers

□ four terminal    ▲ five terminal    ▼ six terminal    ● use only with set-screw terminals for 2 phase, 4 wire service

⊙ current transformer secondaries connected in delta    ‡ current transformer secondaries connected in Y

+ use with one 2-wire and one 3-wire current transformer

■ if equivalent trough sockets are used; cross-bar must be vertical

# watthour meter sockets and mountings

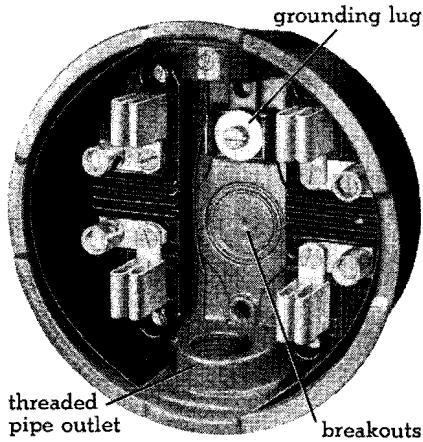
descriptive  
bulletin

42-800

page 3

for indoor or outdoor service

## round sockets series S



type S round socket

### for single phase and network meters

For maximum corrosion protection, series S round sockets are die-cast aluminum-silicon alloy, chemically anodized, finished with two coats of organic lacquer.

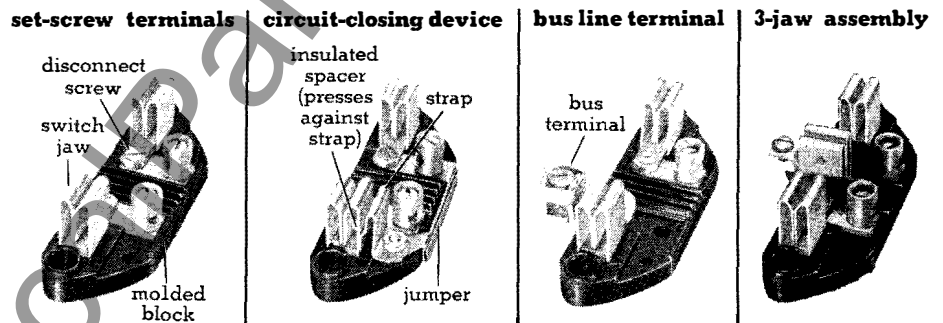
Meter blades fit into phosphor-bronze switch jaws mounted on molded insulating blocks bolted to socket. Aluminum ring seals meter to socket.

Automatic circuit-closing devices, required for transformer-type meters, can be supplied with all sockets to permit removal of meter without interrupting service or damaging transformers.

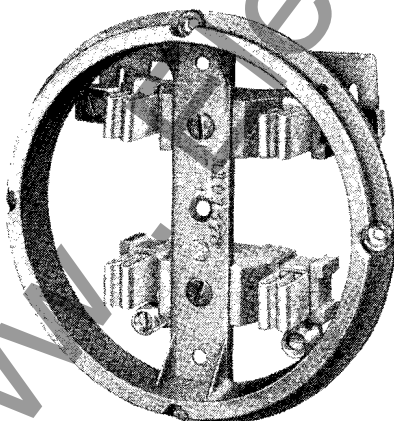
available types:	S	4 jaw	2 or 3 outlet
	S-5	5 jaw	2 or 3 outlet
	S-6	6 jaw	2 outlet

### jaw assemblies

Set-screw terminals standard on line and load side of 2-outlet sockets. Bus terminals standard on one side of 3-outlet sockets; can be supplied on all sockets.



## ring sockets series S



type S ring socket

### for channel mounting of single - or polyphase meters

Ring sockets have a special mounting flange for channel or trough mounting. They are available with terminal arrangements corresponding to series S round sockets or series ST trough sockets, as tabulated below:

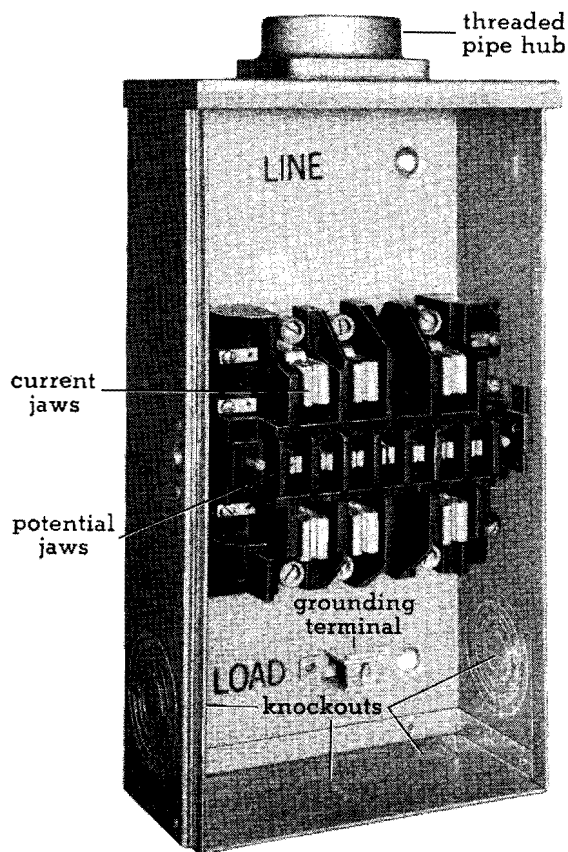
#### available types:

equivalent socket type	round	S	.....	.....	S-5	.....	.....	.....
	trough	..	ST-2	ST-3	ST-5	ST-8	ST-9	ST-10
use:								
ring socket type	S	S-2	S-3	S-5	S-8	S-9	S-10	

S and S-5 ring sockets are normally supplied with bus terminals on line side. All others have set-screw terminals.



## trough sockets series ST



ST-3 trough socket

### for polyphase meters

Series ST trough sockets are made of heavy sheet aluminum alloy with a threaded pipe hub on top and knockouts in the bottom and both sides. They have the same size meter opening as series S round sockets (approximately 6 in.) and use the same aluminum sealing ring.

Sockets are supplied with set-screw, semi-floating or sub terminals. Phosphor-bronze switch-jaws are the same as in series S round sockets. All terminal arrangements are standardized (see page 10).

Disconnects are provided only in sockets with sub terminals. Circuit-closing devices, similar to those used with type S sockets, can be supplied with all ST sockets.

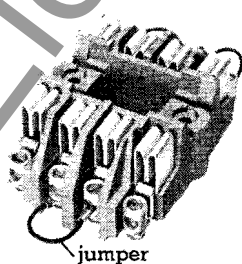
### available types:

type	terminal block	current jaws	potential jaws
ST-2	porcelain	8	..
ST-3	molded	6	7
ST-5	porcelain	5	..
ST-8	porcelain	7	..
ST-9	molded	7	7
ST-10	molded	8	7

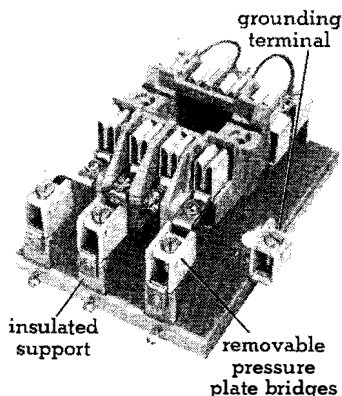
### jaw assemblies

Assemblies shown for ST-2 socket, for 3-wire 3-phase service. Jumpers supplied with socket.

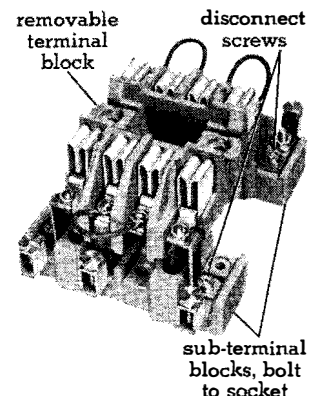
### set-screw terminals



### semi-floating terminals

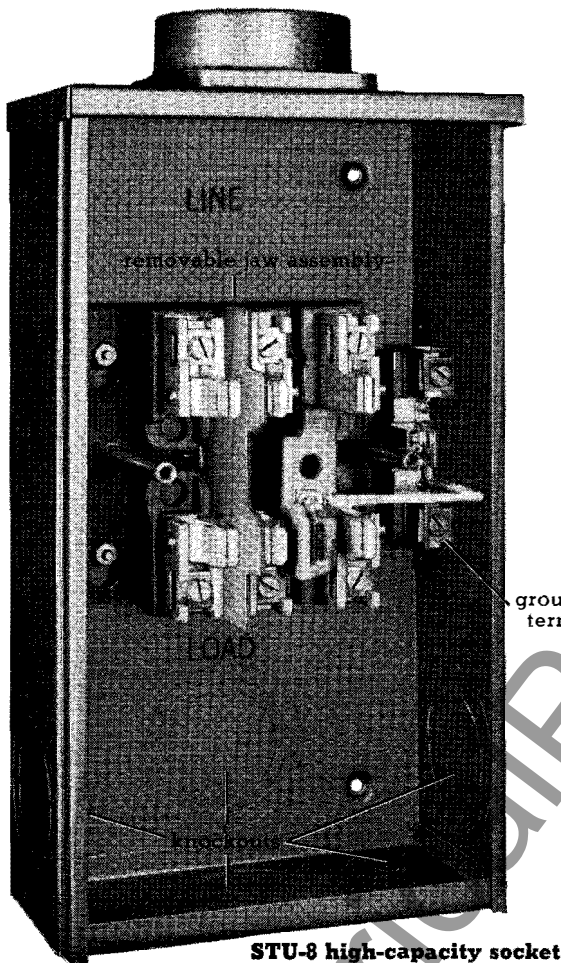


### sub terminals



for indoor or outdoor service

high-capacity sockets      series STU



STU-8 high-capacity socket

for self-contained 50-ampere meters, single - and  
polyphase

Series STU high-capacity sockets are built with extra-heavy silver-plated copper current jaws to permit using 50-amp self-contained meters at their maximum thermal capacity (200 amp single phase, 175 amp polyphase, see page 8).

Sockets are made of Galvaneal sheet steel with a threaded pipe hub on top and knockouts in bottom, back and both sides. Terminals are mounted on porcelain insulating blocks which in turn mount on a metal frame to form a removable assembly.

One piece terminals have removable pressure plates to facilitate wiring heavy conductors. Terminals will accommodate # 6 to 4/0 cable.

All STU sockets can be equipped with automatic circuit-closing devices (shown below) to permit removal of meter without interrupting service.

Front cover is designed to prevent accidental contact with jaws when cover is being removed.

available types:

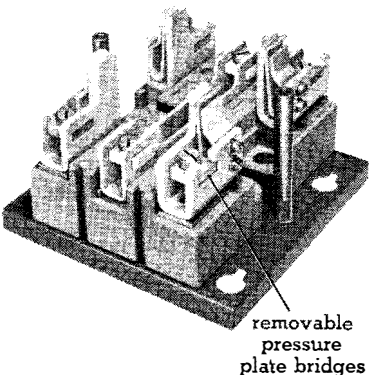
type	jaws	service
STU	4	1Ø, 2 or 3w
STU-5	5	3Ø, 3w or network
STU-8	7	3Ø, 4w Y or Δ

removable  
jaw assemblies

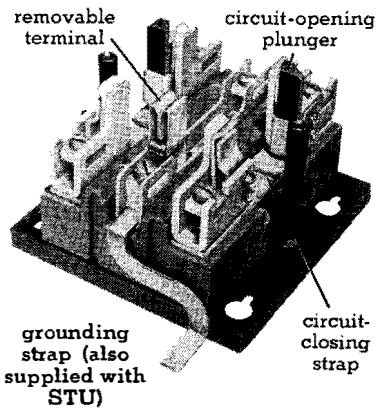
(STU-8 shown above)

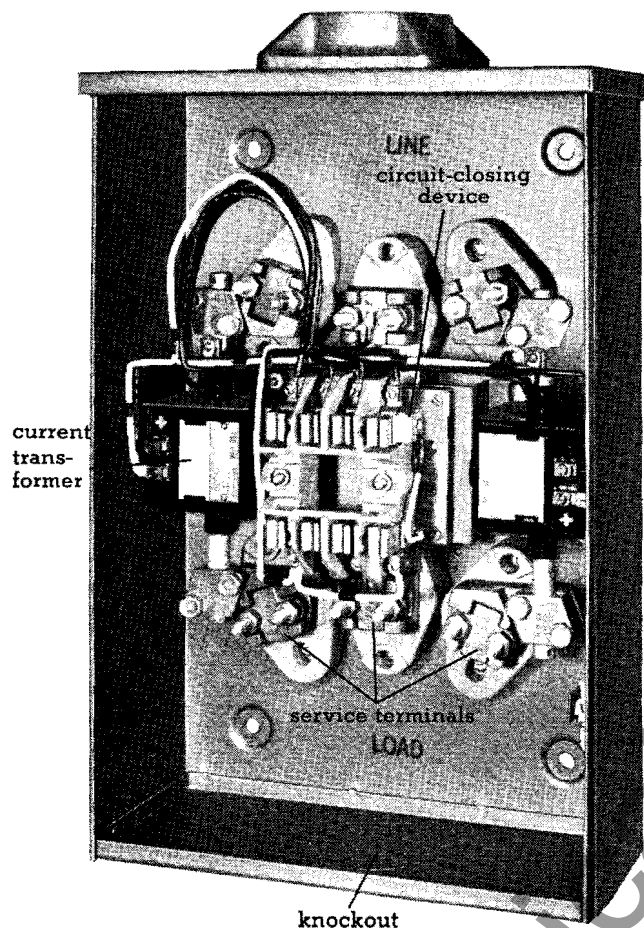
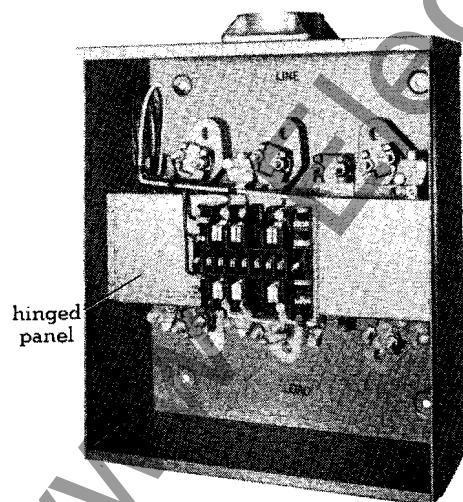
STU socket can be converted to STU-5 by adding a fifth terminal.

for type STU



for type STU-5



**TRANSOCKET sockets series STS****STS-2 two-transformer socket****STS-3 three-transformer socket****complete with current transformers for single- and polyphase socket-type meters**

STS Transocket meter sockets are complete package units with current transformers, terminal jaw assemblies and secondary wiring.

Current transformers are type MR 200/5-amp (400/5 in some sockets, see page 8) with 200% continuous current rating, giving an allowable load of 400 amp. Accuracy is ASA Class 0.3 for burdens B-0.1 and -0.2.

Enclosure is Galvaneal sheet steel with threaded pipe hub on top and knockout in the bottom.

Service terminals will take from 4/0 to 500 mcm (or two 250 mcm) cable. They are mounted on porcelain insulators and set at an angle to facilitate wiring heavy conductors.

All meter current terminals have circuit-closing devices to short circuit transformer secondaries when meter is removed.

Sockets with two transformers have the transformers jaw assembly and secondary wiring mounted on a removable bridge. Sockets with three transformers have jaw assembly on a removable hinged panel and transformers fastened to a removable plate bolted to the back of the socket. Sockets can be installed with only service terminals for contractor to connect service wires. Power company can install transformer unit when service is connected.

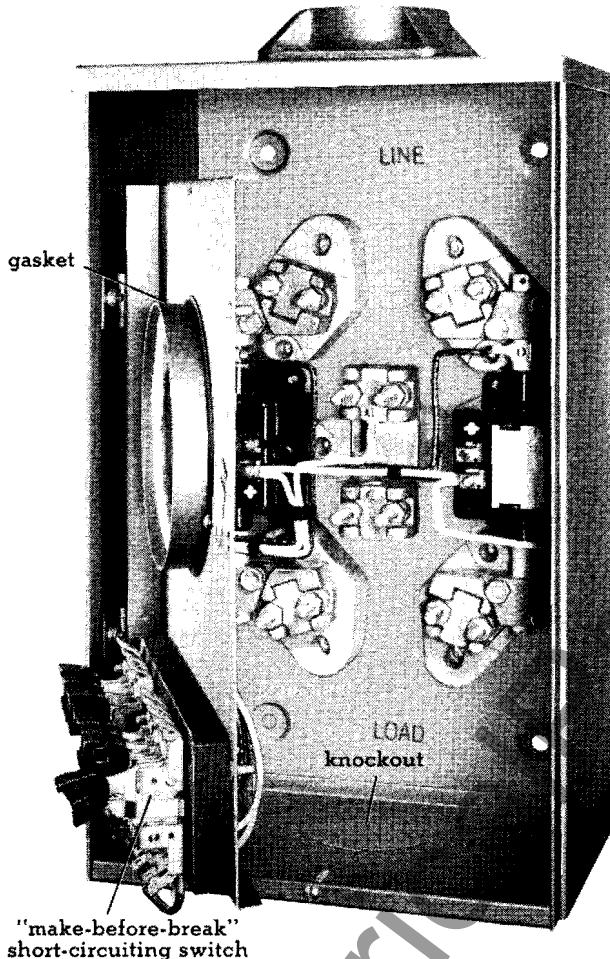
Jaw assemblies can be mounted at right angles if sockets are to be mounted horizontally.

**available types:**

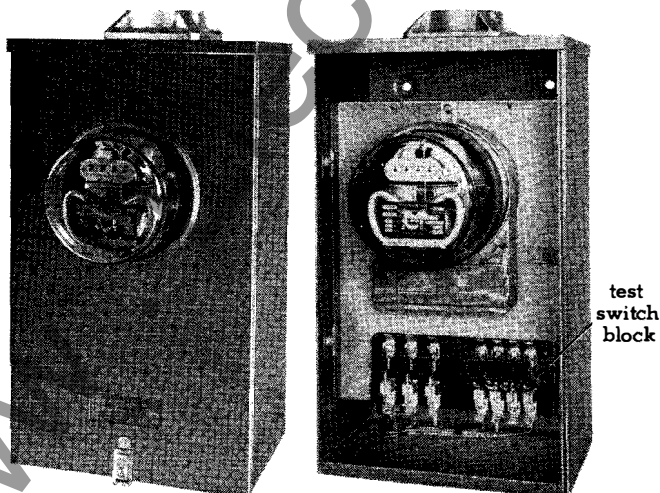
type	for meter	service
STS	CS (4 terminal) CS (5 terminal)	1Ø, 3w 1Ø, 3w
STS-2	CS-2	3Ø, 3w
STS-3	CS-3, CS-7	3Ø, 4w Y or Δ
STS-7	CS-2	3Ø, 4w Δ
STS-8	CS-8 CS-2	3Ø, 4w Y 3Ø, 4w Y
STS-9	CS-9	3Ø, 4w Δ

for indoor or outdoor service

**TRANS-A-MOUNT mountings series STA**



**STA-2 mounting** with hinged panel swung out to show transformers. (Gasket is mounted as shown for shipping.)



**STA-2 mounting** with cover on and off to show how meter is mounted.

**complete with current transformers for single- and polyphase bottom-connected meters**

STA Trans-A-mount meter mountings are complete package units for bottom connected (series CA) meters with current transformers, test switch and all necessary secondary wiring up to the switch. A gasket is supplied to fit around meter cover to assure weather-tight fit with Trans-A-mount cover.

Current transformers are type MR 200/5-amp (400/5 in some mountings, see page 8) with 200% continuous current rating, giving an allowable load of 400 amp. Accuracy is ASA Class 0.3 for burdens B-0.1 and 0.2.

Enclosure is Galvaneal sheet steel with threaded pipe hub on top and knockout in the bottom.

Service terminals will take from 4/0 to 500 mcm (or two 250 mcm) cable. They are mounted on porcelain insulators and set at an angle to facilitate wiring heavy conductors.

Test switches in all current leads are "make-before-break" type to short-circuit transformer secondaries before disconnecting meter.

**available types:**

type	for meter	service
STA	CA	1 $\phi$ , 2 or 3w
STA-2	CA-2	3 $\phi$ , 3w
STA-3	CA-3, CA-9	3 $\phi$ , 4w Y or $\Delta$
STA-7	CA-2	3 $\phi$ , 4w $\Delta$
STA-8	CA-8	3 $\phi$ , 4w Y
STA-9	CA-7	3 $\phi$ , 4w $\Delta$



**ratings, dimensions**

for style numbers, list prices and complete ordering information, see price list 42-020

type		meter		wiring data (for terminal arrangements, see page 10)					
round sockets	S	(two outlet)	CS (4 terminal)	no. of jaws	type of terminals	wire size, maximum	amp maximum		
	S	(three outlet)	CS (4 terminal)	4	set-screw	#2	100		
	S-5	(two outlet)	CS (5 terminal), CS-5	5	bus (line side only)	#0	100		
	S-5	(three outlet)	CS (5 terminal), CS-5	5	set-screw	#2	100		
	S-6	(two outlet)	CS (6 terminal)	6	bus (line side only)	#0	100		
	S-6	(three outlet)	CS (6 terminal)	6	set-screw	#2	100		
ring sockets	S		CS (4 terminal)	4	set-screw	#2	100		
	S-2		CS-2	8	bus (line side only)	#0	100		
	S-3		CS-3, CS-7, CS-8	13	set-screw	#2	100		
	S-5		CS (5 terminal), CS-5	5	set-screw	#2	100		
	S-8		CS-3, CS-7, CS-8, CS-9	7	bus (line side only)	#0	100		
	S-9		CS-4, CS-9	14	set-screw	#2	100		
	S-10		CS-6, CS-10	15	set-screw	#2	100		
trough sockets	ST-2		CS-2	8	set-screw	#2	100		
					semi-floating	#4/0	140		
					sub.	#0	100		
	ST-3		CS-3, CS-7, CS-8	13	set-screw	#2	100		
	ST-5		CS-5	5	semi-floating	#4/0	140		
	ST-8		CS-3, CS-7, CS-8, CS-9	7	set-screw	#2	100		
					semi-floating	#4/0	125		
					sub.	#0	100		
	ST-9		CS-4, CS-9	14	set-screw	#2	100		
					semi-floating	#4/0	140		
high-capacity sockets	STU		CS (4 terminal)	4	set-screw	#2	100		
	STU-5		CS-5	5	semi-floating	#4/0	140		
	STU-8		CS-3, CS-7, CS-8, CS-9	7	set-screw	#2	100		
TRANSOCKET sockets				no. of jaws	transformers	service	wire size, maximum	amp maximum	
	STS		CS (6 terminal)	6	no.	rating			
			CS (5 terminal)	5	2	200 amp	1 Ø, 3w	500 mcm	400
	STS-2		CS-2	8	2	400 amp†	1 Ø, 3w	500 mcm	400
	STS-3		CS-3, CS-7	13	2	200 amp	3 Ø, 3w	500 mcm	400
	STS-7		CS-2	8	3	200 amp	3 Ø, 4w Y or Δ	500 mcm	400
					2	400 amp†	3 Ø, 4w Δ	500 mcm	400
					1	200 amp			
	STS-8		CS-8	13	3	200 amp	3 Ø, 4w Y	500 mcm	400
			CS-2	8	3	200 amp*	3 Ø, 4w Y	500 mcm	400
TRANS-A-MOUNT mountings	STS-9		CS-9	14	3	200 amp	3 Ø, 4w Δ	500 mcm	400
	STA		CA	...	2	200 amp	1 Ø, 3w	500 mcm	400
	STA-2		CA-2	...	2	200 amp	3 Ø, 3w	500 mcm	400
	STA-3		CA-3, CA-9	...	3	200 amp	3 Ø, 4w Y or Δ	500 mcm	400
	STA-7		CA-2	...	2	400 amp†	3 Ø, 4w Δ	500 mcm	400
					1	200 amp			
	STA-8		CA-8	...	3	200 amp	3 Ø, 4w Y	500 mcm	400
STA-9		CA-7	...	3	200 amp	3 Ø, 4w Δ	500 mcm	400	

■ for reference only; based on 55°C rise above a maximum ambient of 35°C in current coil of meter listed when socket is used with maximum-size conductors and 50-amp meter.

† secondaries connected in parallel

♦ secondaries connected in delta



# watthour meter sockets and mountings

descriptive  
bulletin

**42-800**

page 9

for indoor or outdoor service

## dimensions (for reference only)

## remarks\*

		pipe size	diameter <sup>a</sup>	depth	breakouts
2-outlet sockets	shallow	¾	6 <sup>5</sup> / <sub>16</sub>	2 <sup>7</sup> / <sub>16</sub>	¾, 1
		1	6 <sup>5</sup> / <sub>16</sub>	2 <sup>7</sup> / <sub>16</sub>	¾, 1
		1 <sup>1</sup> / <sub>4</sub>	6 <sup>5</sup> / <sub>16</sub>	2 <sup>7</sup> / <sub>16</sub>	none
	deep	1	6 <sup>5</sup> / <sub>16</sub>	2 <sup>3</sup> / <sub>4</sub>	1, 1 <sup>1</sup> / <sub>4</sub>
		1 <sup>1</sup> / <sub>4</sub>	6 <sup>5</sup> / <sub>16</sub>	2 <sup>3</sup> / <sub>4</sub>	1, 1 <sup>1</sup> / <sub>4</sub>
3-outlet sockets	deep	¾	6 <sup>5</sup> / <sub>16</sub>	2 <sup>3</sup> / <sub>4</sub>	¾, 1
		1	6 <sup>5</sup> / <sub>16</sub>	2 <sup>3</sup> / <sub>4</sub>	¾, 1
		1 <sup>1</sup> / <sub>4</sub> , 1	6 <sup>5</sup> / <sub>16</sub>	2 <sup>3</sup> / <sub>4</sub>	1, 1 <sup>1</sup> / <sub>4</sub>
		1 <sup>1</sup> / <sub>4</sub>	6 <sup>5</sup> / <sub>16</sub>	2 <sup>3</sup> / <sub>4</sub>	1, 1 <sup>1</sup> / <sub>4</sub>

<sup>a</sup>6<sup>1</sup>/<sub>16</sub> in. with sealing ring

S and S-5 sockets are available for horizontal or vertical mounting. S-6 sockets are available for only vertical mounting.

3-outlet sockets have bus terminals on line side. Bus terminals on line side of 2-outlet sockets or on both line and load side of 2- and 3-outlet sockets available.

All sockets can be supplied with or without circuit-closing devices.

mounting ring: 7<sup>1</sup>/<sub>16</sub> in. diameter

S and S-5 sockets are available for vertical or horizontal mounting. All other ring sockets are for vertical mounting only.

All sockets can be supplied with or without circuit-closing devices, except S-3 and S-9 which are circuit-closing only.

hub: 1<sup>1</sup>/<sub>4</sub> or 2 in. (2<sup>1</sup>/<sub>2</sub> in. available at extra cost)

box: 7<sup>1</sup>/<sub>2</sub> in. wide; 14<sup>13</sup>/<sub>16</sub> in. high; 4 in. deep

knockouts: three: 1, 1<sup>1</sup>/<sub>4</sub>, 1<sup>1</sup>/<sub>2</sub> and 2 in. (service)  
one: ½, ¾ in. (ground)

ST sockets are normally supplied made of sheet-aluminum alloy; are available in Galvaneal sheet steel on special order.

All ST sockets can be supplied with or without circuit-closing devices, except ST-3 which is available only with circuit-closing devices.

STU, STU-5 hub: 2<sup>1</sup>/<sub>2</sub> in.  
box: 7<sup>1</sup>/<sub>2</sub> in. wide; 15 in. high; 4<sup>1</sup>/<sub>2</sub> in. high  
STU-8 hub: 3 in.  
box: 9<sup>5</sup>/<sub>16</sub> in. wide; 17<sup>1</sup>/<sub>2</sub> in. high; 5 in. deep  
knockouts: four: 1<sup>1</sup>/<sub>2</sub>, 2 and 2<sup>1</sup>/<sub>2</sub> in. (service)  
one: ½, ¾ and 1 in. (ground)

All STU sockets can be supplied with or without circuit-closing devices.

STS, STS-2 hub: 3 in.  
box: 14 in. wide; 22 in. high; 6<sup>1</sup>/<sub>2</sub> in. deep  
STS-3,7,8,9 hub: 3<sup>1</sup>/<sub>2</sub> in.  
box: 18<sup>1</sup>/<sub>2</sub> in. wide; 22 in. high; 8 in. deep  
knockouts: one: 3 in. (service)  
one: ½, ¾ and 1 in. (ground)

All Transocket sockets include transformers, jaw assembly with circuit-closing devices and all necessary secondary wiring.

STA, STA-2 hub: 3 in.  
box: 13 in. wide; 22 in. high; 9 in. deep  
STA-3,7,8,9 hub: 3<sup>1</sup>/<sub>2</sub> in.  
box: 17<sup>1</sup>/<sub>2</sub> in. wide; 24 in. high; 9 in. deep  
knockouts: one: 3 in. (service)  
one: ½, ¾ and 1 in. (ground)

All Trans-A-mount mountings include meter gasket, transformers, meter test switches and all necessary secondary wiring up to the test switches.

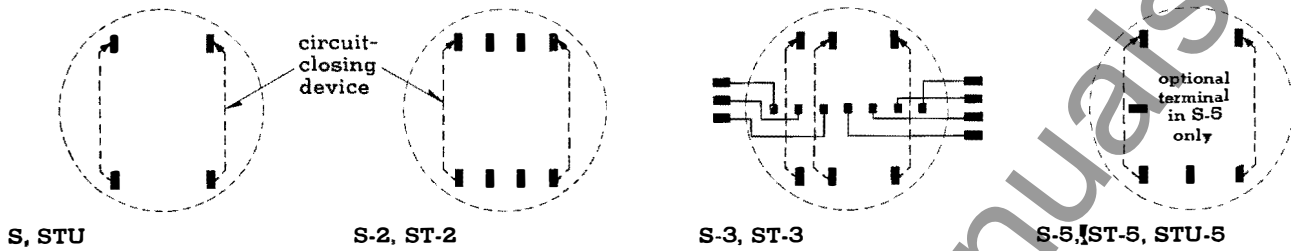
• all sockets can be supplied with or without aluminum sealing rings



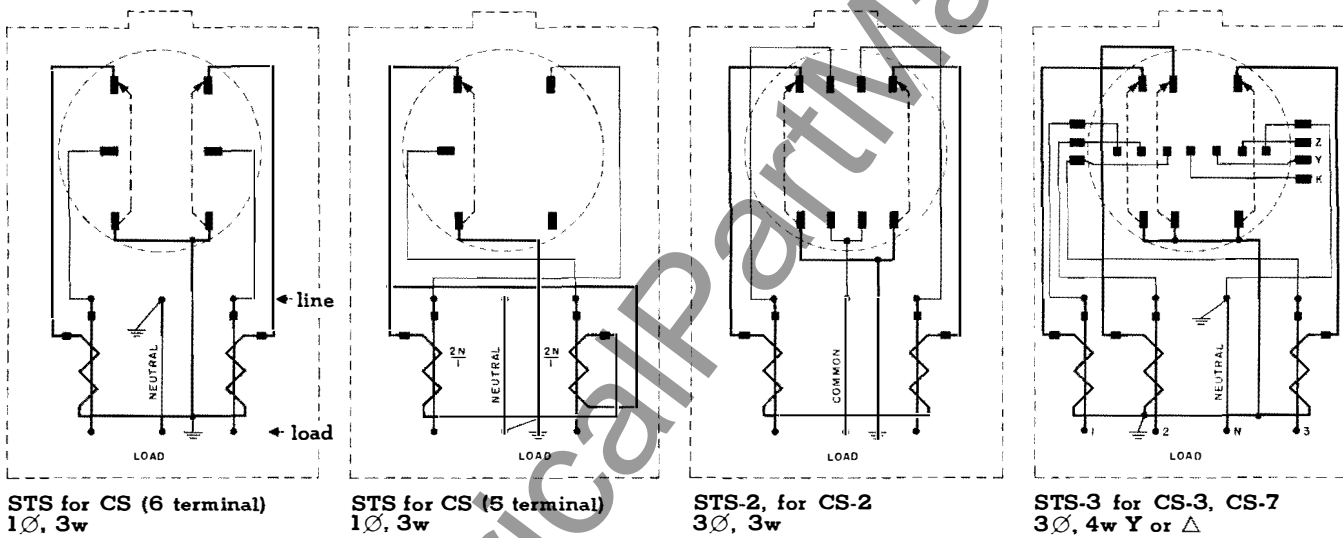
## terminals, wiring

diagrams are front view (for reference only)

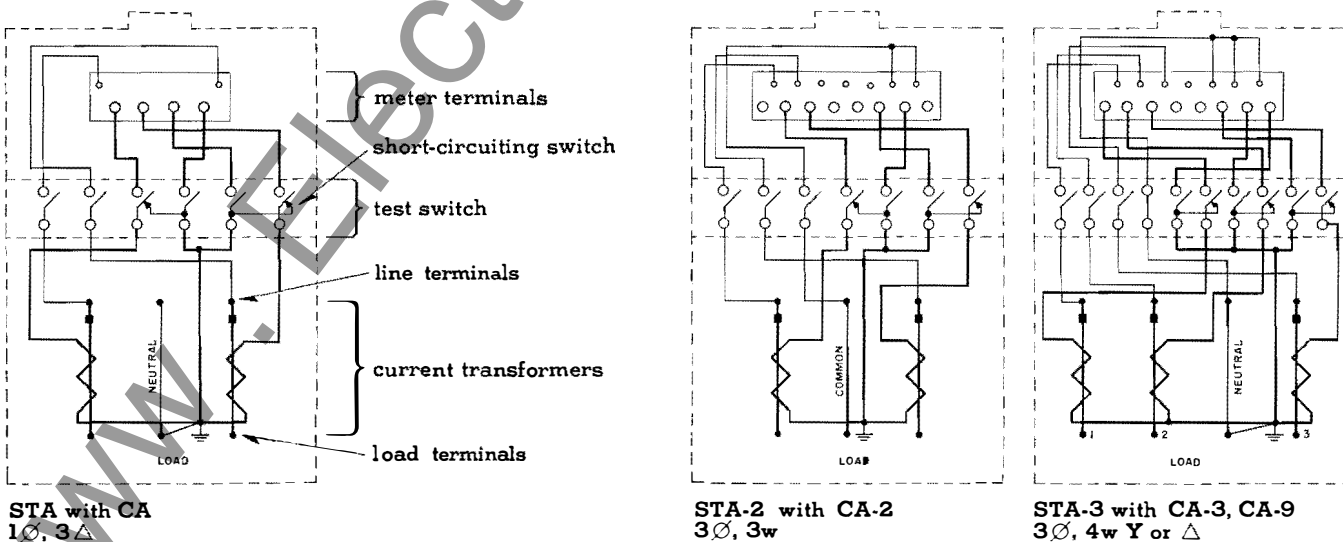
### sockets



### TRANSOCKET sockets



### TRANS-A-MOUNT mountings



■ for external wiring diagrams, see descriptive bulletin 42-100.

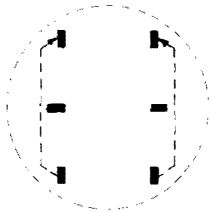
# watthour meter sockets and mountings

descriptive  
bulletin

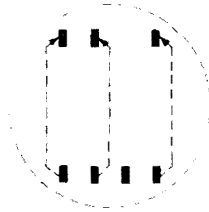
42-800

page 11

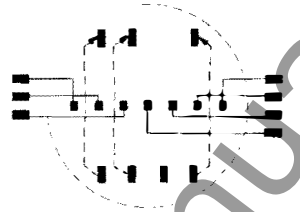
for indoor or outdoor service



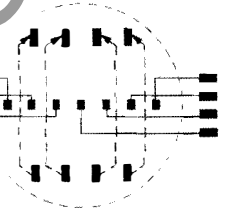
S-6



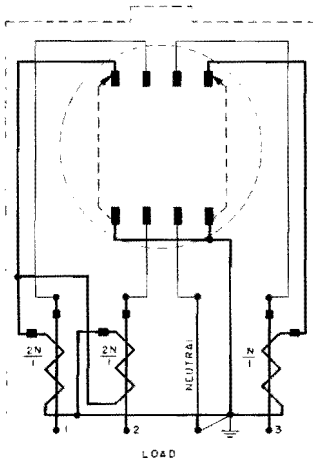
S-8, ST-8, STU-8



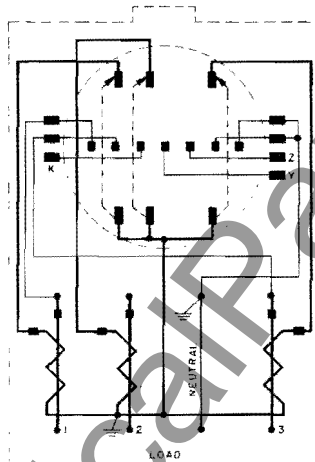
S-9, ST-9



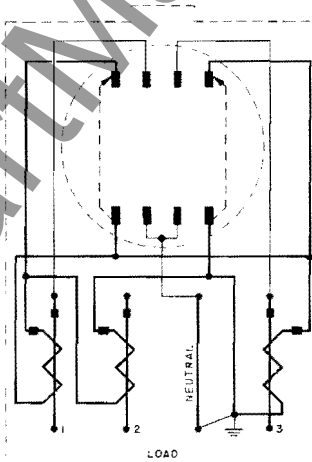
S-10, ST-10



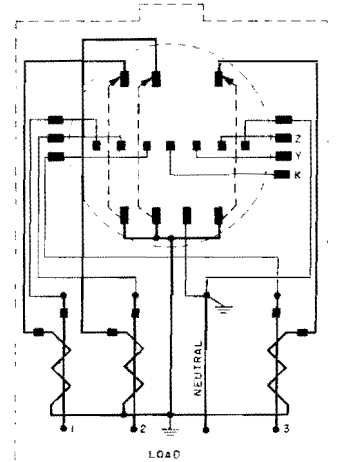
STS-7 for CS-2  
3Ø, 4w Δ



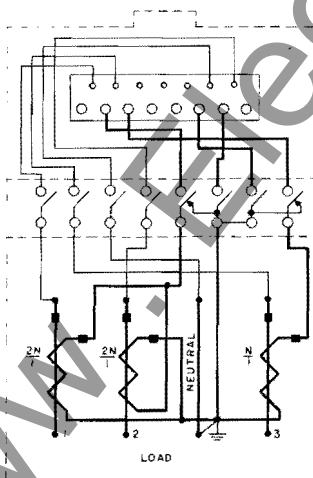
STS-8 for CS-S  
3Ø, 4w Y



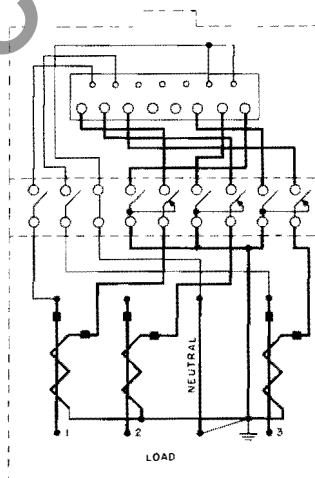
STS-8 for CS-2  
3Ø, 4w Y



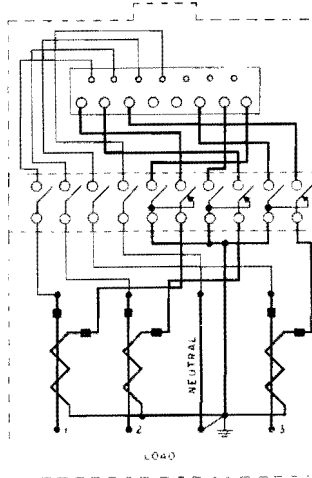
STS-9 for CS-9  
3Ø, 4w Δ



STA-7 with CA-2  
3Ø, 4w Δ



STA-8 with CA-8  
3Ø, 4w Y



STA-9 with CA-7  
3Ø, 4w Δ

## special note:

When using Transocket sockets or Trans-A-mount mountings on 3Ø, 4w Δ service, connect numbered terminals as follows:

