



# INSTRUCTIONS

## LIMITED PRESSURE ASSEMBLY FOR TRANSFORMERS

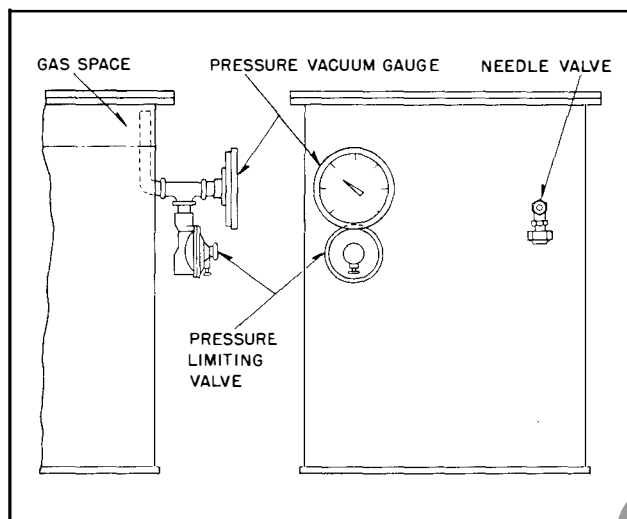


FIG. 1. Limited Pressure Assembly

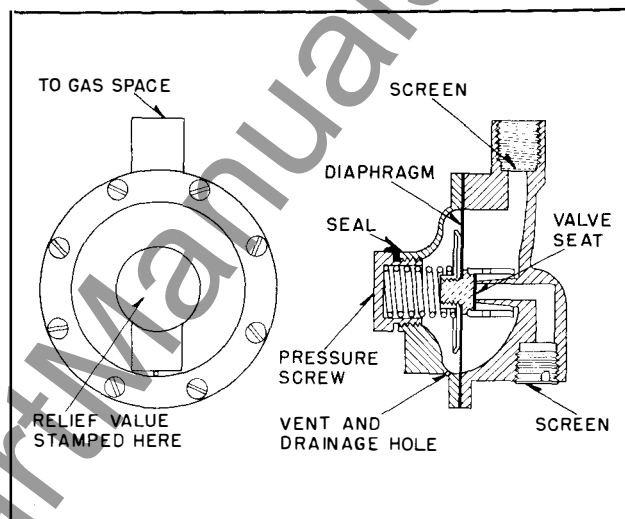


FIG. 2. Construction of Pressure Limiting Valve

The limited pressure assembly (see Fig. 1) is used on some Westinghouse transformers to prevent deterioration of oil and insulation by the exclusion of oxygen and moisture from the oil. The original oxygen content of the air in the transformer tank gas space above the oil is depleted by oxidizing a small percentage of the oil, leaving essentially inert gas above the oil.

The system consists of:

1. A pressure limiting valve.
2. A needle valve.
3. Pressure vacuum gauge.

### CONSTRUCTION

**Pressure Limiting Valve.** The construction of this valve is shown in Fig. 2. This valve is factory set at 8 or 6.5 pounds per square inch (refer to pressure screw) and no attempt to change this valve should be made.

**Needle Valve.** This is a simple needle valve which is opened when withdrawing a sample for gas analysis or when purging. (If it is the customer's practice to purge transformers before placing them in service, see I.L. 46-710-9.)

**A Pressure Vacuum Gauge.** This is a reliable diaphragm type instrument with an easily read dial. The scale is calibrated in pounds per square inch pressure or vacuum.

**WESTINGHOUSE ELECTRIC CORPORATION**  
SHARON PLANT • TRANSFORMER DIVISION • SHARON, PA.