

Instructions for Cast Resin Bushing



I. L. 47-061-6

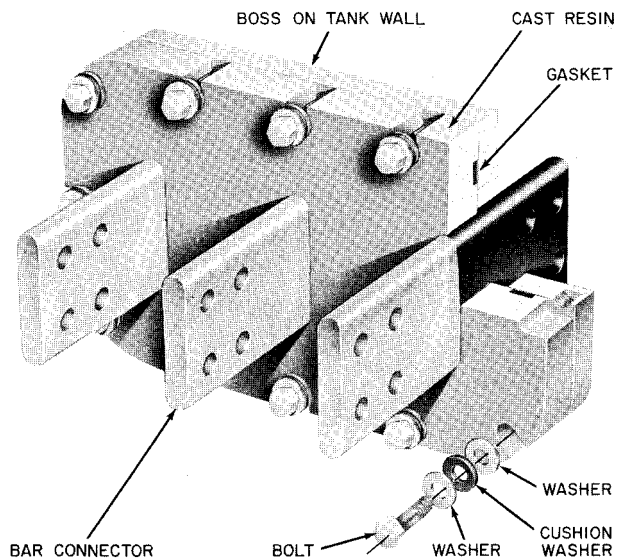


Fig. 1 Cast Resin Bushing

The Westinghouse Cast Resin Bushing, used for voltages 5 KV and lower, is made by casting an insulating flange of resin around the copper bar conductors. See Fig. 1. Three bars are used for three-phase units with a fourth bar added when a neutral conductor is required. Single-phase units are made with two bars. A recessed groove around the underside of the cast flange provides a gasket retainer. Open slots on the flange are used in bolting the bushing to the transformer. To prevent excessive mechanical loading of the bushing, only flexible connections should be made to the bushing bars. The bars should not be used as structural members to support conductors.

MAINTENANCE

The surface of the cast flange should be cleaned periodically to prevent accumulation of dirt.

To remove the bushing, take out the mounting bolts and heat the steel boss in an even manner to a temperature of 65° C. to 85° C. to loosen the gasket cement. If

the boss is not heated, any prying or wedging at the joint may crack the flange.

Bushing Replacement Procedure

- (1) Clean the recessed gasket area of the flange and the mounting boss surface of old gasket cement with alcohol.
- (2) Apply red gasket cement (S#1150419) to the gasket recess in the bushing flange and to one side of the gasket.
- (3) Place new gasket into recess, with cemented surfaces in contact, and allow to dry 10 to 15 minutes.
- (4) Apply cement to the other side of the gasket and to the bushing boss on the transformer tank.
- (5) Place the bushing flange against the boss and replace bolts. Two steel washers with a 3/16 inch thick cork neoprene washer sandwiched between them are to be placed between the flange and the bolt head.
- (6) Tighten four corner bolts until each steel washer is snug against the bushing flange. Tighten the remaining bolts until all are snug against the flange.
- (7) Tighten one of the lower bolts a third of a turn, then tighten the next bolt a third of a turn. Continue this process until the flange is .030 inches from the boss all around the edge.

RENEWAL PARTS

If renewal parts are required, order from the nearest Westinghouse Sales Office, giving description of parts wanted, with transformer serial number and rating as stamped on transformer instruction plate.

Westinghouse Electric Corporation Power Transformer Division, Sharon, Pa.

Effective June, 1964

Printed in U.S.A. (T.P.)