



## LIGHTNING ARRESTER GROUNDING KIT

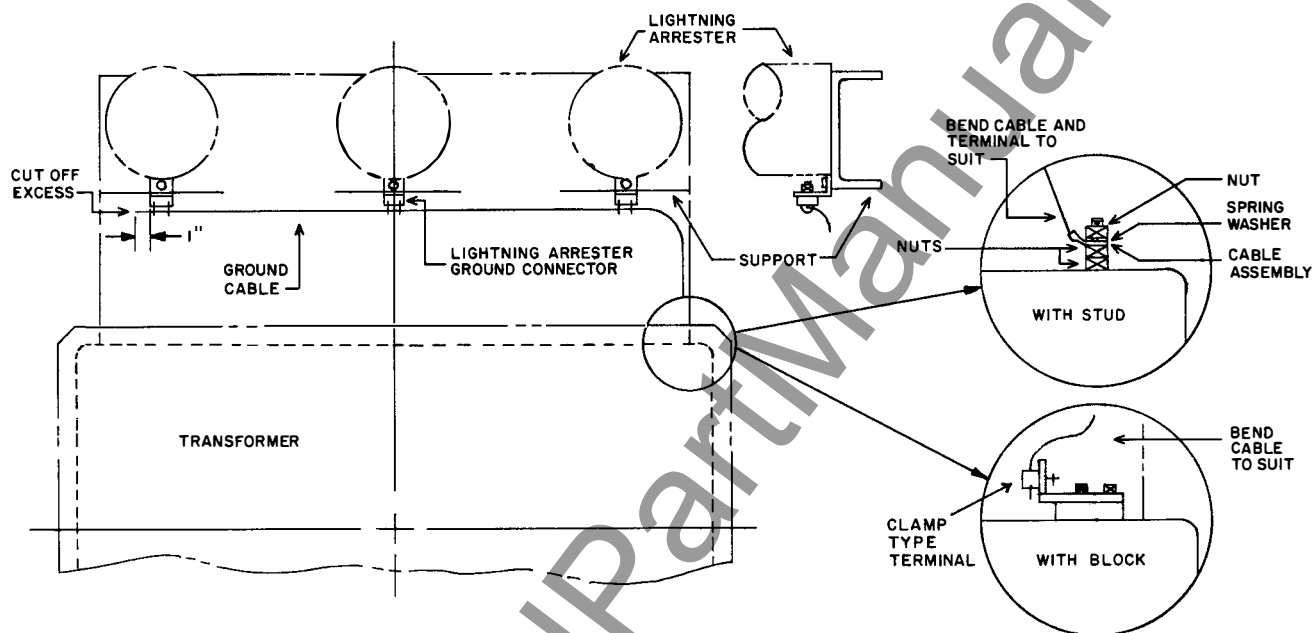


Fig. 1. Detail of connections to be made when grounding lightning arresters on transformers

When lightning arresters are supplied for use on the transformer, a grounding kit is also furnished which includes a length of bare stranded cable and the necessary terminal hardware. A stainless steel stud or copper faced block is provided for grounding the cable to the transformer tank.

To ground the arresters, mount a grounding connector at the base of each lightning arrester and install the cable as shown in Fig. 1. Efficient operation of the lightning arrester is dependent upon a permanent, low-resistance ground, so it is essential that all connections be made tight. The length of

cable furnished with the arresters has been made long enough for all applications and therefore in many cases will extend further than necessary. This excess should be cut off about one inch beyond the last lightning arrester ground clamp.

These instructions do not purport to cover all details or variations in equipment nor to provide for every possible contingency to be met in connection with installation, operation or maintenance. Should further information be desired or should particular problems arise which are not covered sufficiently for the purchaser's purposes, the matter should be referred to the General Electric Company.

MEDIUM TRANSFORMER DEPARTMENT

GENERAL  ELECTRIC

ROME, GEORGIA

[www.ElectricalPartManuals.com](http://www.ElectricalPartManuals.com)