



switch type WL

renewal
parts data
37-1511

switchgear apparatus

Instructions

To mount switch on panel, remove the indicator screw or machine screw and pull handle from shaft. Remove nameplate. Take out mounting screws and remove dial plate. Place switch on rear of panel with shaft extending through panel. Replace dial plate on shaft on front of panel and fasten securely to switch with mounting screws. Replace nameplate. Fasten handle on shaft with indicator screw or machine screw.

To remove rectangular nameplate, remove the indicator screw or machine screw and pull handle from shaft. Remove nameplate by pressing in and up at the top, then lift out.

To replace rectangular nameplate set nameplate in top slot of dial plate, then snap into position by pressing in and down at the bottom.

IMPORTANT: Indicator screw or indicator rib on modern handle must point in the same direction as arrow stamped on end of shaft.

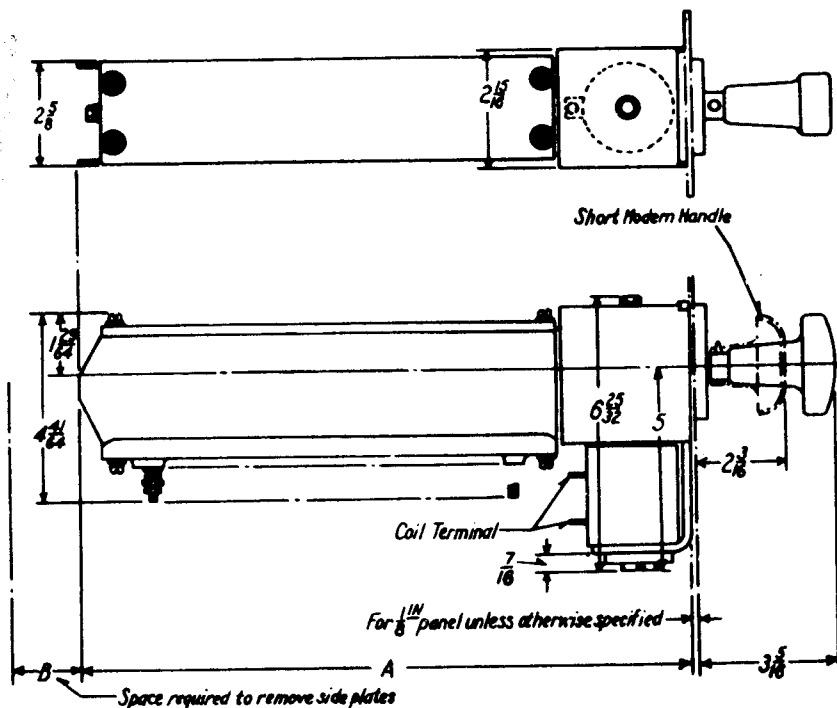
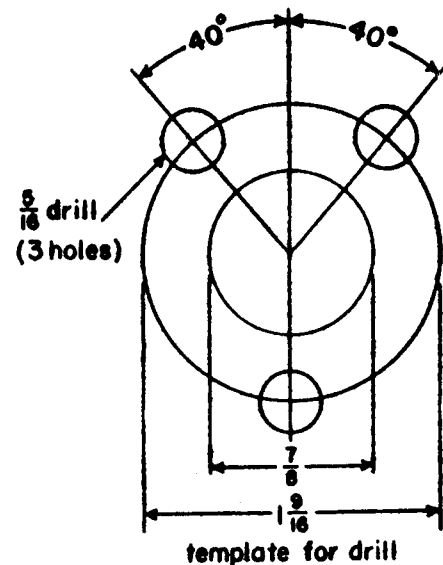
To remove drum, take out indicator screw or machine screw and pull handle from shaft. Remove rear end plate and pull drum out from the rear.

To dismantle drum, remove bolt from end of shaft. When renewing parts on drum, the various segments must be replaced in their original position. The key-way number on each segment indicates the exact position of segment on drum.

table of outline dimensions

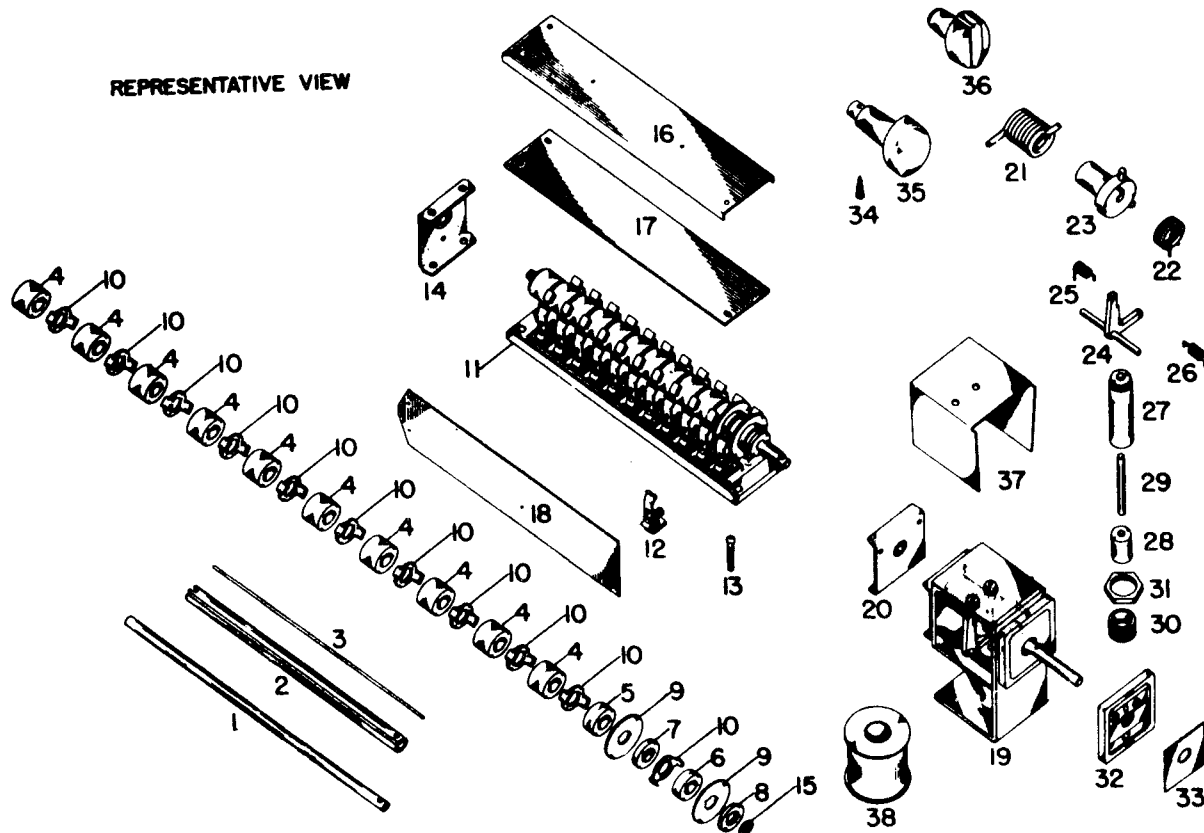
no. of contacts	A	B
2	7-7/16	5-1/4
3	8-9/32	6-3/32
4	9-1/8	6-15/16
5	9-31/32	7-25/32
6	10-13/16	8-5/8
8	12-1/2	10-5/16
10	14-3/16	12

drilling plan—to scale





switchgear apparatus



ref no.	name of part	ref no.	name of part
..	switch without coil	19	trip mechanism without coil
..	drum complete	20	front end plate with bearing
1	shaft	21	centering spring
2	insulating tube	22	operating spring
3	notch key	23	latch cam
4	insulating spacer - 3/4" long	24	latch with pin
5	insulating spacer - 15/32" long	25	latch spring - right hand wound
6	insulating spacer - 11/32" long	26	latch spring - left hand wound
7	insulating spacer - 7/32" long	27	stationary core
8	insulating spacer - 5/32" long	28	moving core
9	insulating barrier	29	plunger rod
10	contact segment	30	thimble
11	base	31	nut
12	stationary contact finger	32	dial plate
13	contact finger terminal screw	33	dial name plate - no. 28095
14	rear end plate with bearing	34	indicator screw
15	drum shaft spacing collar	35	heavy duty oval handle
16	top cover	36	modern oval handle
17	top cover lining	37	cover
18	side plate	38	coil

parts indented are included in the part under which they are indented

ordering information

- Name the part and give its identification number.
- Give the complete nameplate reading.
- State method of shipment desired.
- Send all orders or correspondence to nearest sales office of the company.
- Combine orders to total at least five dollars as this is minimum charge.

supersedes issue dated January, 1954

effective May, 1955



switch type WL

renewal
parts data
37-151.1

switchgear apparatus

Instructions

To mount switch on panel, remove the indicator screw or machine screw and pull handle from shaft. Remove nameplate. Take out mounting screws and remove dial plate. Place switch on rear of panel with shaft extending through panel. Replace dial plate on shaft on front of panel and fasten securely to switch with mounting screws. Replace nameplate. Fasten handle on shaft with indicator screw or machine screw.

To remove rectangular nameplate, remove the indicator screw or machine screw and pull handle from shaft. Remove nameplate by pressing in and up at the top, then lift out.

To replace rectangular nameplate set nameplate in top slot of dial plate, then snap into position by pressing in and down at the bottom.

IMPORTANT: Indicator screw or indicator rib on modern handle must point in the same direction as arrow stamped on end of shaft.

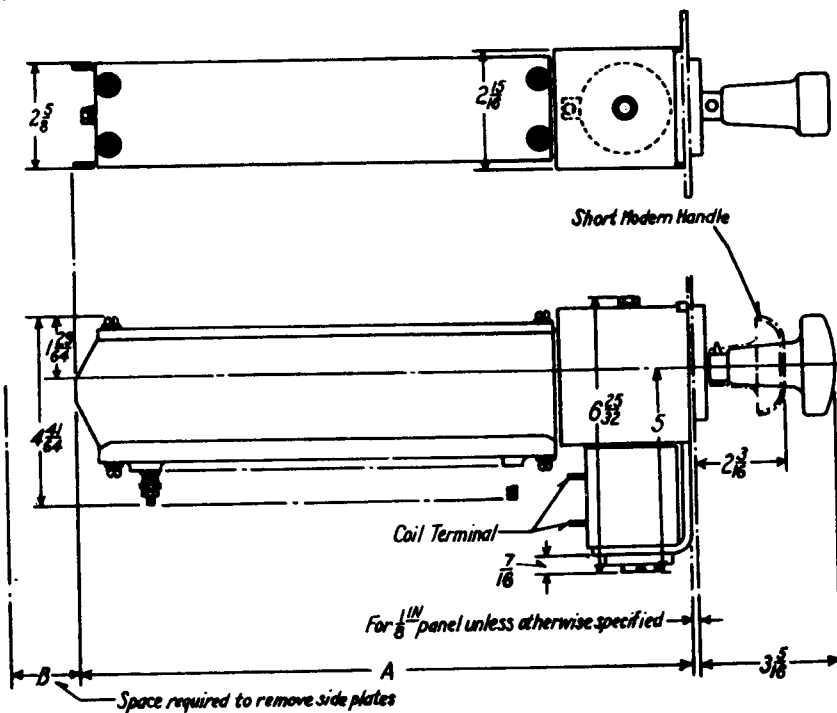
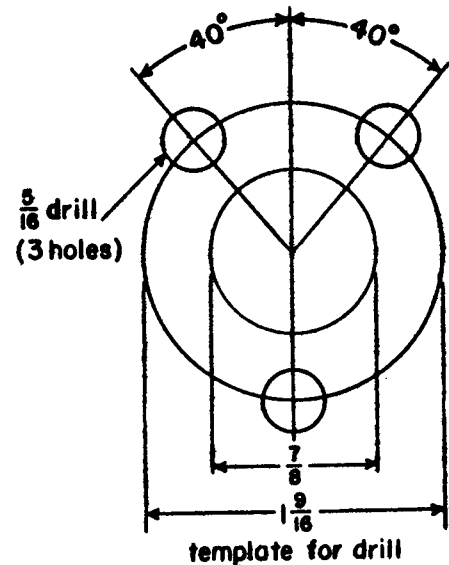
To remove drum, take out indicator screw or machine screw and pull handle from shaft. Remove rear end plate and pull drum out from the rear.

To dismantle drum, remove bolt from end of shaft. When renewing parts on drum, the various segments must be replaced in their original position. The key-way number on each segment indicates the exact position of segment on drum.

table of outline dimensions

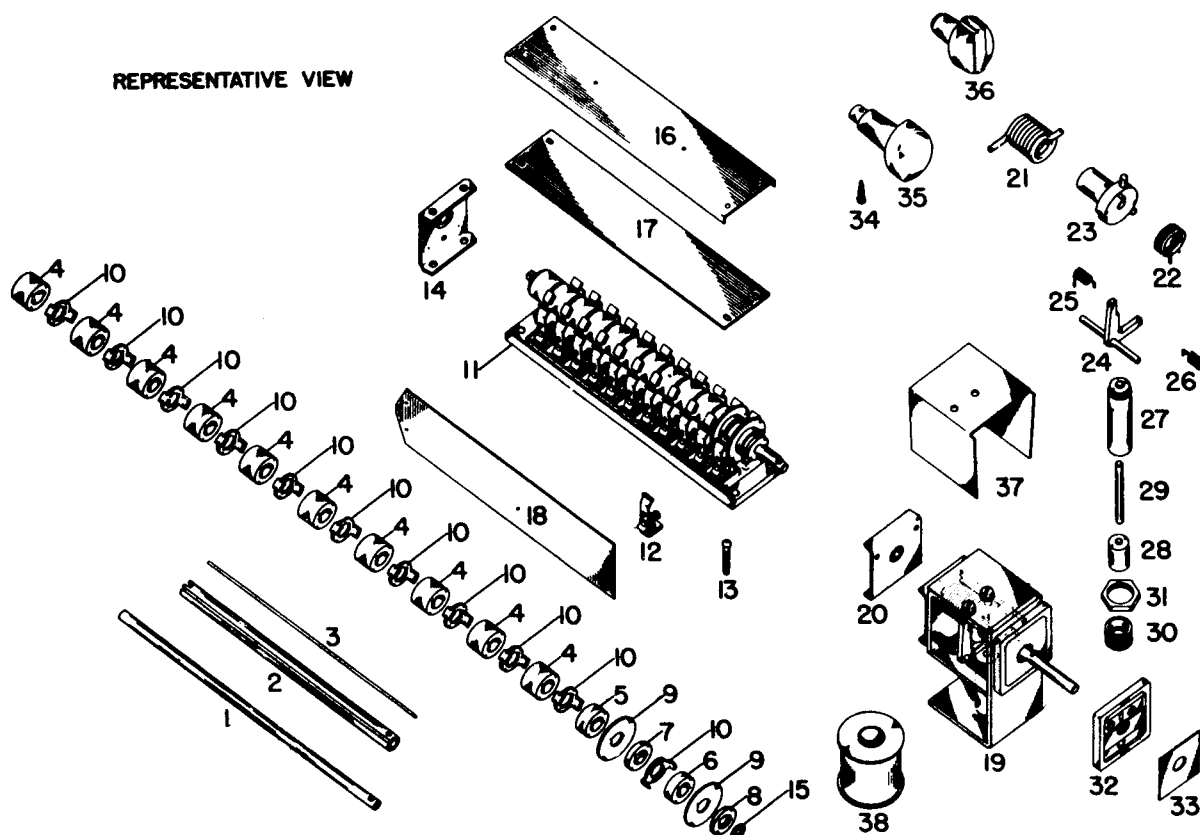
no. of contacts	A	B
2	7-7/16	5-1/4
3	8-9/32	6-3/32
4	9-1/8	6-15/16
5	9-31/32	7-25/32
6	10-13/16	8-5/8
8	12-1/2	10-5/16
10	14-3/16	12

drilling plan—to scale





switchgear apparatus



ref no.	name of part	ref no.	name of part
..	switch without coil	19	trip mechanism without coil
..	drum complete	20	front end plate with bearing
1	shaft	21	centering spring
2	insulating tube	22	operating spring
3	notch key	23	latch cam
4	insulating spacer - 3/4" long	24	latch with pin
5	insulating spacer - 15/32" long	25	latch spring - right hand wound
6	insulating spacer - 11/32" long	26	latch spring - left hand wound
7	insulating spacer - 7/32" long	27	stationary core
8	insulating spacer - 5/32" long	28	moving core
9	insulating barrier	29	plunger rod
10	contact segment	30	thimble
11	base	31	nut
12	stationary contact finger	32	dial plate
13	contact finger terminal screw	33	dial name plate - no. 28095
14	rear end plate with bearing	34	indicator screw
15	drum shaft spacing collar	35	heavy duty oval handle
16	top cover	36	modern oval handle
17	top cover lining	37	cover
18	side plate	38	coil

parts indented are included in the part under which they are indented

ordering information

- Name the part and give its identification number.
- Give the complete nameplate reading.
- State method of shipment desired.

- Send all orders or correspondence to nearest sales office of the company.
- Combine orders to total at least five dollars as this is minimum charge.

supersedes issue dated **January, 1954**

effective **May, 1955**



switch type WL

renewal
parts data
37-151.1

switchgear apparatus

Instructions

To mount switch on panel, remove the indicator screw or machine screw and pull handle from shaft. Remove nameplate. Take out mounting screws and remove dial plate. Place switch on rear of panel with shaft extending through panel. Replace dial plate on shaft on front of panel and fasten securely to switch with mounting screws. Replace nameplate. Fasten handle on shaft with indicator screw or machine screw.

To remove rectangular nameplate, remove the indicator screw or machine screw and pull handle from shaft. Remove nameplate by pressing in and up at the top, then lift out.

To replace rectangular nameplate set nameplate in top slot of dial plate, then snap into position by pressing in and down at the bottom.

IMPORTANT: Indicator screw or indicator rib on modern handle must point in the same direction as arrow stamped on end of shaft.

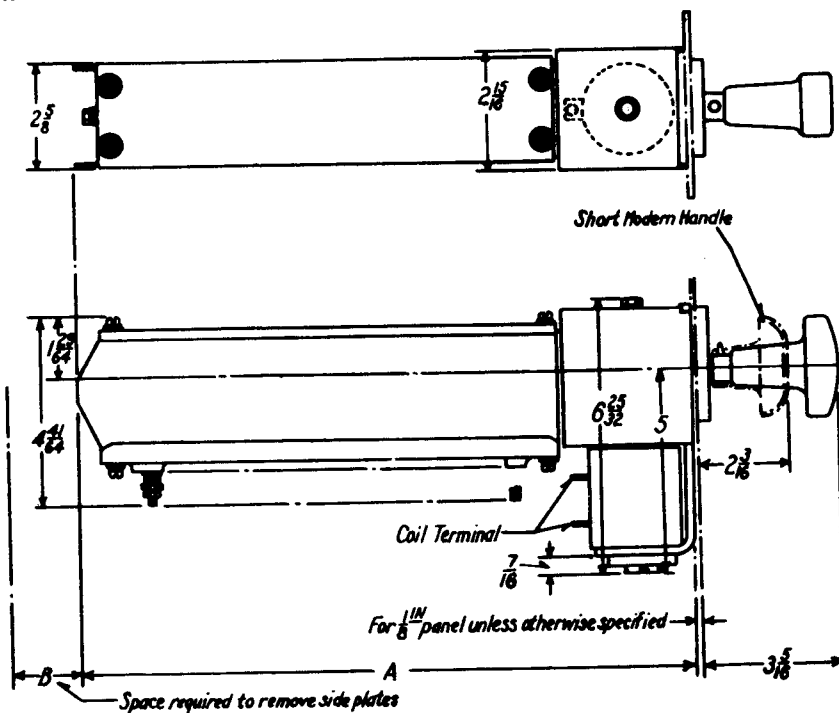
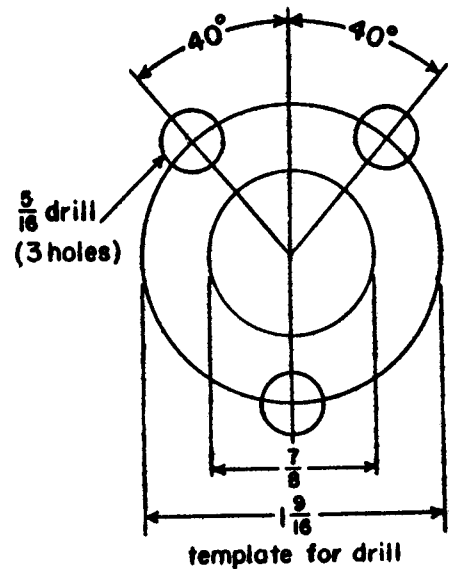
To remove drum, take out indicator screw or machine screw and pull handle from shaft. Remove rear end plate and pull drum out from the rear.

To dismantle drum, remove bolt from end of shaft. When renewing parts on drum, the various segments must be replaced in their original position. The key-way number on each segment indicates the exact position of segment on drum.

table of outline dimensions

no. of contacts	A	B
2	7-7/16	5-1/4
3	8-9/32	6-3/32
4	9-1/8	6-15/16
5	9-31/32	7-25/32
6	10-13/16	8-5/8
8	12-1/2	10-5/16
10	14-3/16	12

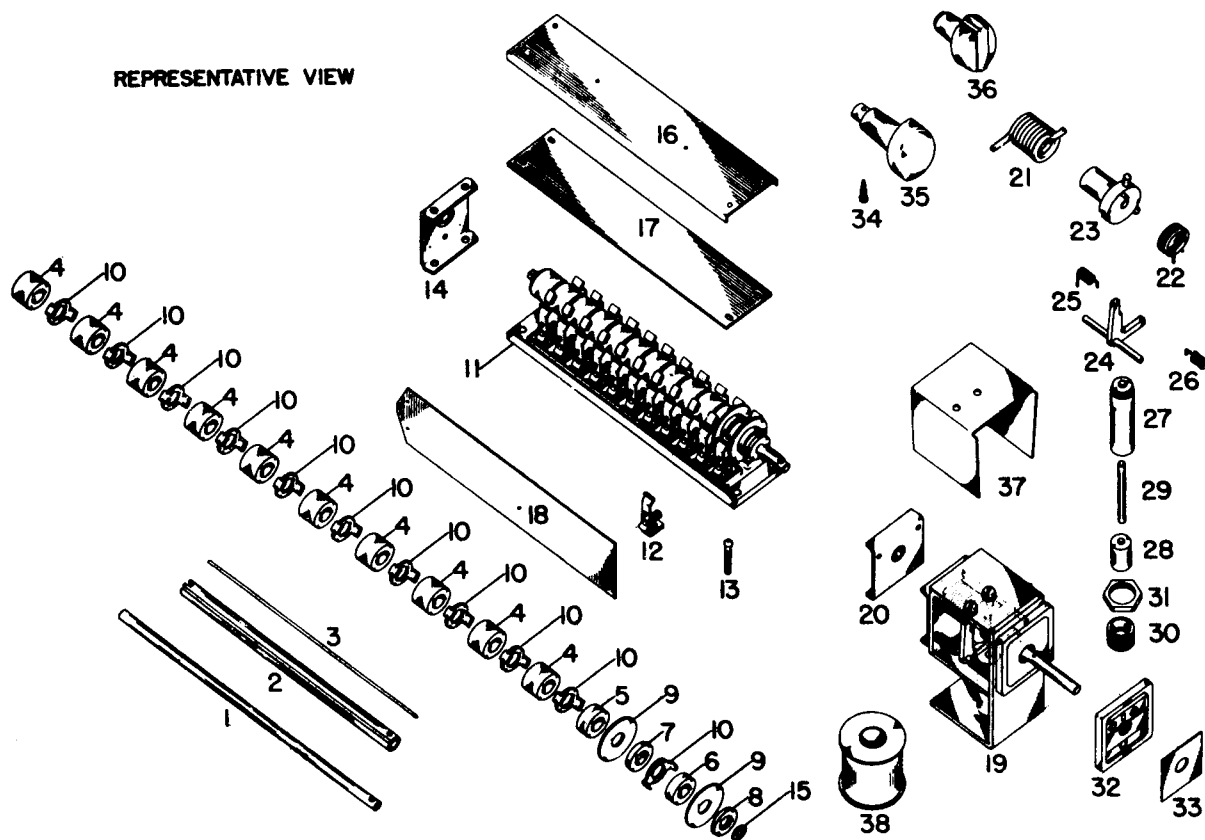
drilling plan—to scale



switch type WL



switchgear apparatus



ref no.	name of part	ref no.	name of part
..	switch without coil	19	trip mechanism without coil
..	drum complete	20	front end plate with bearing
1	shaft	21	centering spring
2	insulating tube	22	operating spring
3	notch key	23	latch cam
4	insulating spacer - 3/4" long	24	latch with pin
5	insulating spacer - 15/32" long	25	latch spring - right hand wound
6	insulating spacer - 11/32" long	26	latch spring - left hand wound
7	insulating spacer - 7/32" long	27	stationary core
8	insulating spacer - 5/32" long	28	moving core
9	insulating barrier	29	plunger rod
10	contact segment	30	thimble
11	base	31	nut
12	stationary contact finger	32	dial plate
13	contact finger terminal screw	33	dial name plate - no. 28095
14	rear end plate with bearing	34	indicator screw
15	drum shaft spacing collar	35	heavy duty oval handle
16	top cover	36	modern oval handle
17	top cover lining	37	cover
18	side plate	38	coil

parts indented are included in the part under which they are indented

ordering information

- Name the part and give its identification number.
- Give the complete nameplate reading.
- State method of shipment desired.
- Send all orders or correspondence to nearest sales office of the company.
- Combine orders to total at least five dollars as this is minimum charge.

supersedes issue dated January, 1954

effective May, 1955



INDICATING LAMPS

37-350

Recommendations for Stock

Service Voltage	RECTANGULAR MINALITE				LARGE ROUND MINALITE	ROUND MINALITE
	For 24 V. - 0.75 Watt Bulb		For 48 V. - 1.5 Watt Bulb			
	For Panels Up to 3/16"	For Panels 1/4" to 2"	For Panels Up to 3/16"	For Panels 1/4" to 2"		
<u>RECTANGLES</u> Furnished in Carton Quantities of 4						
25	1589 180	1589 180	549 460	822 328
50	1589 181	1589 182	1589 176	1589 180	549 461	1640 615
70	1589 182	1589 187	1589 170	1615 757	822 288	1640 613
115	1589 183	1589 185	1589 571	1615 758	1640 609	822 323
125	1589 184	1589 186	1589 572	1615 759	549 462	822 322
208	1589 185	1589 197	1615 754	1615 760	1114 967	1640 614
230	1589 186	1589 198	1615 755	1615 761	1640 610	822 321
250	1589 187	1589 199	1615 756	1615 762	549 463	822 320
380	1589 188	1589 188	1615 720	1615 720
480	1589 189	1589 189	1615 721	1615 721
25%	549 464
50%	1589 190	1589 190	549 465
125%	1589 191	1589 191	1615 722	1615 722	549 466
250%	1589 192	1589 192	1615 723	1615 723	549 467
% Bright - Dim Operation						
<u>PILES</u> Furnished in Carton Quantities of 10						
18	549 474
24	1124 156	1124 156	1640 619
48	1615 719	1615 719
55	822 314
<u>LENS</u> Furnished in Carton Quantities of 10						
Color						
Red	1615 688	1615 688	1615 688	1615 688	549 468	822 265
Green	1615 689	1615 689	1615 689	1615 689	549 469	822 266
Clear	1615 690	1615 690	1615 690	1615 690	549 470	822 270
Blue	1615 691	1615 691	1615 691	1615 691	549 471	822 268
Amber	1615 692	1615 692	1615 692	1615 692	549 472	822 269
Opal	1615 693	1615 693	1615 693	1615 693	549 473	822 267

Lamp Extractor S#1802 170

Recommended in Minimum Carton Quantities.

Supersedes issue dated September, 1960

July, 1961

