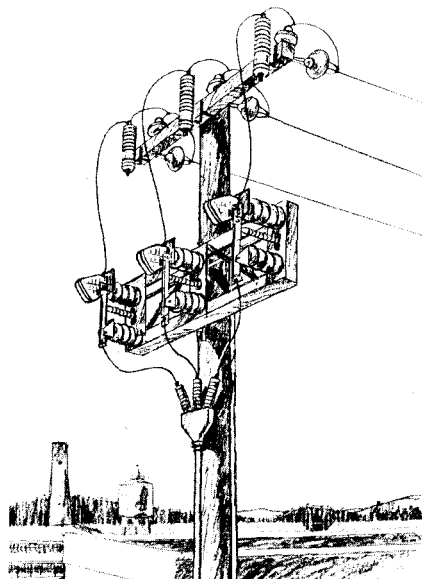




January 3, 1978  
Supersedes P.L. 38-830 pages 1-2,  
dated February 15, 1977  
Prices effective January 3, 1978 and  
subject to change without notice.  
(Refer to Selling Policy 38-000)  
Mailed to: E, D, C/1993/PL

Types LB-3, LB-3V, and LB-3F  
3Ø Switches  
Type LB-1 1Ø Switches  
7.8/13.8, 15, and 14.4/24.9 kv, 400 and  
600 Amp. Continuous and Loadbreak

## Three Phase & Single Phase Loadbreak Disconnects



Vertical Mounting

### Design Features

**Loadbreak:** Delrin® arc chute and quick break blade give safe sure three phase loadbreak and sectionalizing.

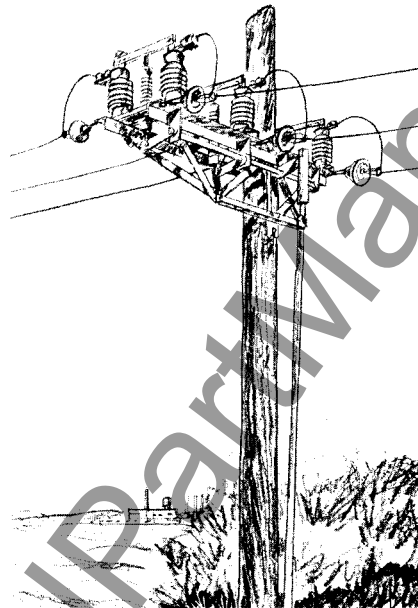
**Easy Installation:** Pole mounted by means of through bolt and lag screw.

**Completely Assembled:** Factory assembled, adjusted and tested for timing prior to shipment, ready for pole mounting.

**Main Contacts:** The high pressure silver to silver main contacts are factory adjusted and self aligning.

**Safe, Positive Position Locking:** Operating handle can be locked in open or closed position with padlocks supplied by the purchaser.

① Registered trademark of E. I. DuPont de Nemours and Co.  
© Changed or added since previous issue.



Horizontal Mounting

**Rigid Frame:** Galvanized steel frame provides strong rigid mounting for each phase. Operating linkage assures positive loadbreak action when opening and closing switch.

**Push Rod Insulators:** High strength porcelain push rod insulators maintain insulation level and timing adjustment. The main contact arms are positively held by the push rod insulators at approximately 45 degrees while the switch is in the open position. This assures proper clearance and indication of switch position.

**Grounding Pads:** Grounding pads on the frame and operating handle allow switch to be suitably grounded for maximum safety.

### Specifications

Maximum Design Voltage... 7.8, 15 or 25 kv  
Maximum Loadbreak Current... 400-600 amperes  
Maximum Continuous Current... 400 or 600 amperes  
Impulse BIL... 95, 110, 125 kv  
Momentary Rating... 30,000 amps symmetrical, 50,000 amps asymmetrical  
Approximate Net Weight... 450 lbs.  
Switch is designed and tested in accordance with NEMA SG6-1974 power switching equipment.

### List Price Includes:

- Complete switch with terminals range No. #2-350 MCM ASCR.
- Operating handle.
- Necessary pipe couplings to connect 3-10 feet sections of 1½" galvanized operating pipe. (Pipe not included).
- 2 Pipe Guides.
- Ground strap for operating pipe.
- Provisions on frame for grounding.
- Provisions for mounting six distribution lightning arresters.

### Accessories (not included in list price) List Price

Porcelain operating rod insulator section for switch Figures 1, 3, 4 and 5. **\$61.00©**  
S# 679A130G03 W-11 Ramad 11631  
Porcelain operating rod insulator section for switch Figure 2. **\$61.00©**  
S# 679A130G04 W-11 Ramad 14546  
Pipe guide for switches 1, 3 and 4. **\$11.00©**  
S# 678A591H01 W-11 Ramad 44102  
Pipe guide for switch Figure 2. **\$11.00©**  
S# 792C955G09 W-11 Ramad 20486

### Arresters

It is common practice on pole top switches of this type to be equipped with lightning arresters mounted on either or both sides of the switch. Provisions have been made on the frame for mounting arresters. They are available on special order. Refer to Price List 46-520 for arresters desired.

### List Prices

Mounting	Figure Ref. 38-834 F WE A	Continuous and Loadbreak Current	LB-3, LB-3V and LB-3F 7.8/13.8 KV Grounded Wye Maximum Voltage - 95 KV BIL			LB-3, LB-3V and LB-3F 15 KV Maximum Voltage - 110 KV BIL			LB-3, LB-3V and LB-3F 14.4/24.9 KV Grounded Wye Maximum Voltage - 125 KV BIL		
			Ramad W-11	Style Number	List Price©	Ramad W-11	Style Number	List Price©	Ramad W-11	Style Number	List Price©
Horizontal	1	400	33061	634A027A01	\$1157.00	33058	634A037A01	\$1200.00	33057	634A051A01	\$1271.00
Horizontal	1	600	33059	634A028A01	1186.00	31558	634A038A01	1221.00	33056	634A052A01	1329.00
Vertical	2	400	33051	634A029A01	1221.00	33053	634A039A01	1257.00	38640	634A053A01	1329.00
Vertical	2	600	33052	634A030A01	1257.00	33054	634A040A01	1271.00	38643	634A054A01	1393.00
Vertical	3	400	33955	634A031A01	1393.00	35957	634A041A01	1457.00	35959	634A055A01	1529.00
Vertical	3	600	33956	634A032A01	1457.00	35958	634A042A01	1486.00	35960	634A056A01	1621.00
Frame	4	400	16891	634A901A01	1221.00	16908	634A905A01	1257.00	16869	634A759A01	1329.00
Frame	4	600	16900	634A903A01	1257.00	16920	634A907A01	1271.00	16883	634A909A01	1393.00
Frame	5	400	16892	634A902A01	1221.00	16912	634A906A01	1257.00	16870	634A760A01	1329.00
Frame	5	600	16903	634A904A01	1257.00	16923	634A908A01	1271.00	16888	634A910A01	1393.00



### Design Features

**Loadbreak:** Delrin arc chute and quick break blade assure safe positive operation.

**Installation:** Switch is assembled with two insulators, on a base which can be single or double cross-arm mounted, either vertically or underhung.

**Operation:** A hookstick operated switch operating in a manner similar to the type LBU cutout. The switch blade is hinged on a captive pivot, thereby, allowing underhung construction.

**Main Contacts:** Stationary contacts are of the modified knife type providing long life operation at full rating. The quick break blade and contacts within the Delrin arc chute are identical with those in the three phase LB-3 switch.

**Terminal Arrangement:** Two hole pads provide necessary mounting holes for most commercially available fittings. They are tin-plated for use with either copper or aluminum terminals.

### Further Information

Application Data 38-831  
38-834 FWEA

Ⓢ Changed or added since previous issue.

List Prices LB-1

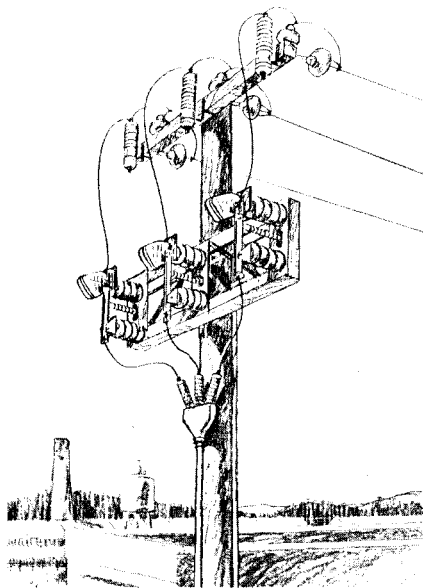
KV	Continuous and Loadbreak Current	Ramad W-11	BIL-KV	Style Number	List Price
7.8/13.8	400	20478	95	634A061A01	\$211.00
7.8/13.8	600	20479	95	634A062A01	233.00
15	400	62403	110	634A063A01	233.00
15	600	20482	110	634A064A01	257.00
14.4/24.9	400	62411	125	634A065A01	257.00
14.4/24.9	600	15824	125	634A066A01	280.00



February 15, 1977  
Supersedes 38-830 P WE A pages 1-2,  
dated February 26, 1976  
Prices effective February 15, 1977 and  
subject to change without notice.  
(Refer to Selling Policy 38-000)  
Mailed to: E, D, C/1993/PL

Types LB-3, LB-3V, and LB-3F  
3Ø Switches  
Type LB-1 1Ø Switches  
7.8/13.8, 15, and 14.4/24.9 kv, 400 and  
600 Amp. Continuous and Loadbreak

## Three Phase & Single Phase Loadbreak Disconnects



Vertical Mounting

### Design Features

Loadbreak: Delrin® arc chute and quick break blade give safe sure three phase loadbreak and sectionalizing.

Easy Installation: Pole mounted by means of through bolt and lag screw.

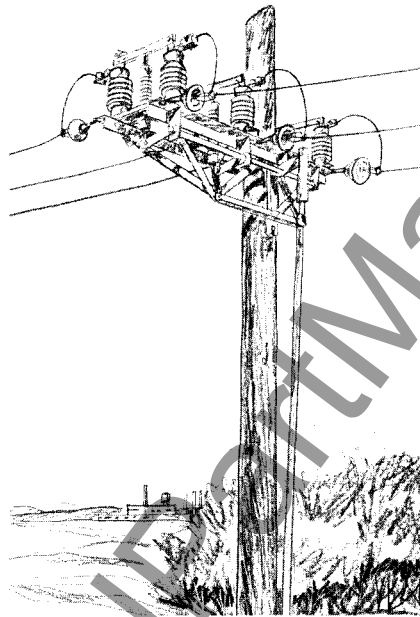
Completely Assembled: Factory assembled, adjusted and tested for timing prior to shipment, ready for pole mounting.

Main Contacts: The high pressure silver to silver main contacts are factory adjusted and self aligning.

Safe, Positive Position Locking: Operating handle can be locked in open or closed position with padlocks supplied by the purchaser.

① Registered trademark of E. I. DuPont de Nemours and Co.

© Changed or added since previous issue.



Horizontal Mounting

Rigid Frame: Galvanized steel frame provides strong rigid mounting for each phase. Operating linkage assures positive loadbreak action when opening and closing switch.

Push Rod Insulators: High strength porcelain push rod insulators maintain insulation level and timing adjustment. The main contact arms are positively held by the push rod insulators at approximately 45 degrees while the switch is in the open position. This assures proper clearance and indication of switch position.

Grounding Pads: Grounding pads on the frame and operating handle allow switch to be suitably grounded for maximum safety.

### Specifications

Maximum Design Voltage . . 7.8, 15 or 25 kv  
Maximum Loadbreak Current . . 400-600 amperes

Maximum Continuous Current . . 400 or 600 amperes

Impulse BIL . . .95, 110, 125 kv

Momentary Rating . . 30,000 amps symmetrical, 50,000 amps asymmetrical

Approximate Net Weight . . 450 lbs.

Switch is designed and tested in accordance with NEMA SG6-1974 power switching equipment.

### List Price Includes:

- Complete switch with terminals range No. #2-350 MCM ASCR.
- Operating handle.
- Necessary pipe couplings to connect 3-10 feet sections of 1½" galvanized operating pipe. (Pipe not included).
- 2 Pipe Guides.
- Ground strap for operating pipe.
- Provisions on frame for grounding.
- Provisions for mounting six distribution lightning arresters.

### Accessories (not included in list price) List Price

Porcelain operating rod insulator section for switch Figures 1, 3, 4 and 5. **\$43.00©**  
S# 679A130G03 W-11 Ramad 11631  
Porcelain operating rod insulator section for switch Figure 2. . . . . **\$43.00©**  
S# 679A130G04 W-11 Ramad 14546  
Pipe guide for switches 1, 3 and 4. **\$8.00©**  
S# 678A591H01 W-11 Ramad 44102  
Pipe guide for switch Fig. 2. . . . . **\$8.00©**  
S# 792C955G09 W-11 Ramad 20486

### Arresters

It is common practice on pole top switches of this type to be equipped with lightning arresters mounted on either or both sides of the switch. Provisions have been made on the frame for mounting arresters. They are available on special order. Refer to Price List 46-520 for arresters desired.

### List Prices

Mounting	Figure Ref.	Continuous and Loadbreak Current	LB-3, LB-3V and LB-3F 7.8/13.8 KV Grounded Wye Maximum Voltage - 95 KV BIL			LB-3, LB-3V and LB-3F 15 KV Maximum Voltage - 110 KV BIL			LB-3, LB-3V and LB-3F 14.4/24.9 KV Grounded Wye Maximum Voltage - 125 KV BIL		
	38-834 F WE A		Ramad W-11	Style Number	List Price©	Ramad W-11	Style Number	List Price©	Ramad W-11	Style Number	List Price©
Horizontal	1	400	33061	634A027A01	\$ 810.00	33058	634A037A01	\$ 840.00	33057	634A051A01	\$ 890.00
Horizontal	1	600	33059	634A028A01	830.00	31558	634A038A01	855.00	33056	634A052A01	930.00
Vertical	2	400	33051	634A029A01	855.00	33053	634A039A01	880.00	38640	634A053A01	930.00
Vertical	2	600	33052	634A030A01	880.00	33054	634A040A01	890.00	38643	634A054A01	975.00
Vertical	3	400	33955	634A031A01	975.00	35957	634A041A01	1020.00	35959	634A055A01	1070.00
Vertical	3	600	33956	634A032A01	1020.00	35958	634A042A01	1040.00	35960	634A056A01	1135.00
Frame	4	400	16891	634A901A01	855.00	16908	634A905A01	880.00	16869	634A759A01	930.00
Frame	4	600	16900	634A903A01	880.00	16920	634A907A01	890.00	16883	634A909A01	975.00
Frame	5	400	16892	634A902A01	855.00	16912	634A906A01	880.00	16870	634A760A01	930.00
Frame	5	600	16903	634A904A01	880.00	16923	634A908A01	890.00	16888	634A910A01	975.00



### Design Features

**Loadbreak:** Delrin arc chute and quick break blade assure safe positive operation.

**Installation:** Switch is assembled with two insulators, on a base which can be single or double cross-arm mounted, either vertically or underhung.

**Operation:** A hookstick operated switch operating in a manner similar to the type LBU cutout. The switch blade is hinged on a captive pivot, thereby, allowing underhung construction.

**Main Contacts:** Stationary contacts are of the modified knife type providing long life operation at full rating. The quick break blade and contacts within the Delrin arc chute are identical with those in the three phase LB-3 switch.

**Terminal Arrangement:** Two hole pads provide necessary mounting holes for most commercially available fittings. They are tin-plated for use with either copper or aluminum terminals.

### Further Information

Application Data 38-831  
38-834 FWE A

● Changed or added since previous issue.

### List Prices LB-1

KV	Continuous and Loadbreak Current	Ramad W-11	BIL-KV	Style Number	List Price
7.8/13.8	400	20478	95	634A061A01	\$148.00
7.8/13.8	600	20479	95	634A062A01	163.00
15	400	62403	110	634A063A01	163.00
15	600	20482	110	634A064A01	180.00
14.4/24.9	400	62411	125	634A065A01	180.00
14.4/24.9	600	15824	125	634A066A01	196.00

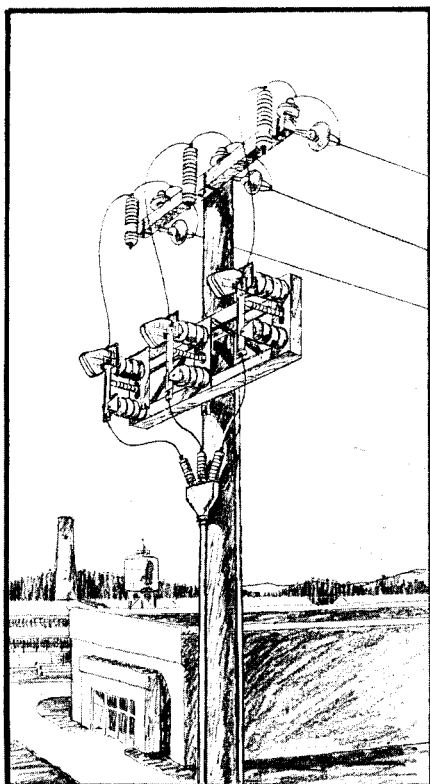
Westinghouse



## Three Phase & Single Phase Loadbreak Disconnects

Types LB-3 and LB-3V 3Ø Switches  
Type LB-1 1Ø Switches

7.8, 15 and 25 kv, 400 and 600 Amp.  
Continuous and Loadbreak



Vertical Mounting

### Design Features

**Loadbreak:** Delrin® arc chute and quick break blade give safe sure three phase loadbreak and sectionalizing.

**Easy Installation:** Pole mounted by means of through bolt and lag screw.

**Completely Assembled:** Factory assembled adjusted and tested for timing prior to shipment, ready for pole mounting.

**Main Contacts:** The high pressure silver to silver main contacts are factory adjusted and self aligning.

**Safe, Positive Position Locking:** Operating handle can be locked in open or closed position with padlocks supplied by the purchaser.

① Registered trademark of E. I. DuPont de Nemours and Co.

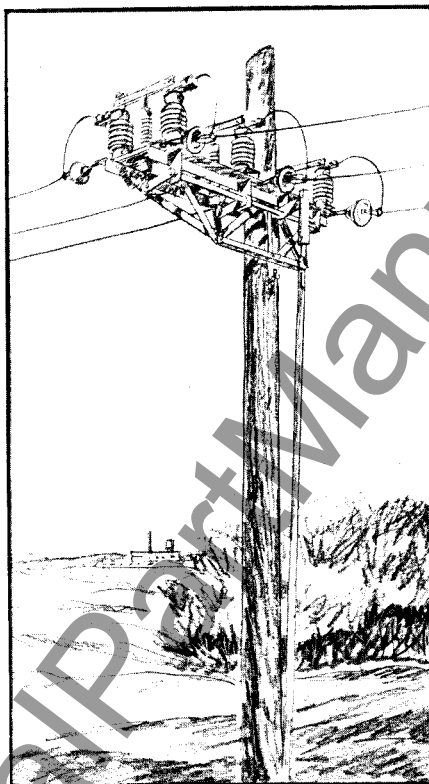
### List Prices

Mounting	Figure	Continuous and Loadbreak Current	LB-3 and LB-3V 14.4/24.9 KV Grounded Wye Maximum Voltage – 125 KV BIL			LB-3 and LB-3V 7.8/13.8 KV Grounded Wye Maximum Voltage – 95 KV BIL			LB-3 and LB-3V 15 KV Maximum Voltage – 110 KV BIL		
			Ramad W-11	Style Number	List Price	Ramad W-11	Style Number	List Price	Ramad W-11	Style Number	List Price
Horizontal	1	400	33057	634A051A01	\$ 793.00	33061	634A027A01	\$722.00	33058	634A037A01	\$743.00
Horizontal	1	600	33056	634A052A01	829.00	33059	634A028A01	742.00	31558	634A038A01	758.00
Vertical	2	400	38640	634A053A01	829.00	33051	634A029A01	758.00	33053	634A039A01	780.00
Vertical	2	600	38643	634A054A01	866.00	33052	634A030A01	780.00	33054	634A040A01	793.00
Vertical	3	400	35959	634A055A01	953.00	33955	634A031A01	866.00	35957	634A041A01	902.00
Vertical	3	600	35960	634A056A01	1011.00	33956	634A032A01	902.00	35958	634A042A01	924.00

© Changed or added since previous issue.

Prices effective September 10, 1974; subject to change without notice.

Selling Policy 38-000



Horizontal Mounting

**Rigid Frame:** Galvanized steel frame provides strong rigid mounting for each phase. Operating linkage assures positive loadbreak action when opening and closing switch.

**Push Rod Insulators:** High strength alumina porcelain push rod insulators maintain insulation level and timing adjustment. The main contact arms are positively held by the push rod insulators at approximately 60 degrees while the switch is in the open position. This assures proper clearance and indication of switch position.

**Grounding Pads:** Grounding pads on the frame and operating handle allow switch to be suitably grounded for maximum safety.

### Specifications

Maximum Design Voltage . . 7.8, 15 or 25 kv  
Maximum Loadbreak Current . . 400-600 amperes

Maximum Continuous Current . . 400 or 600 amperes

Impulse BIL . . . 95, 110, 125 kv

Momentary Rating . . . 30,000 amps symmetrical, 50,000 amps asymmetrical

Approximate Net Weight . . 450 lbs.

Switch is designed and tested in accordance with NEMA SG6-1960 power switching equipment.

### List Price Includes:

- Complete switch with terminals range No. #2-350 MCM ASCR.
- Operating handle.
- Necessary pipe couplings to connect 3-10 feet sections of 1½" galvanized operating pipe. (Pipe not included).
- 2 Pipe Guides.
- Clamp and ground strap for operating pipe.
- Provisions on frame for grounding.
- Provisions for mounting six distribution lightning arresters.

### Accessories (not included in list price)

#### List Price©

Porcelain operating rod insulator section for switch Figures 1 and 3 . . . \$27.50  
S# 679A130G03 W-11 Ramad 11631

Porcelain operating rod insulator section for switch Figure 2 . . . \$27.50  
S# 679A130G04 W-11 Ramad 14546

Pipe guide for LB-3 . . . \$6.87  
S# 678A591H01 W-11 Ramad 44102

Pipe guide for LB-3V . . . \$6.87  
S# 792C955G09 W-11 Ramad 20483

Pusher insulator for switch blade LB-3 and LB-3V . . . \$41.25  
S# 898A163G01 W-11 Ramad 20486

For special terminal requirements, refer to Bloomington.

For special terminal requirements, refer to Bloomington.

For special terminal requirements, refer to Bloomington.

### Arresters

It is common practice on pole top switches of this type to be equipped with lightning arresters mounted on either or both sides of the switch. Provisions have been made on the frame for mounting arresters. They are available on special order. Refer to price list 38-320 for arresters desired.

Dimensions ▸

September 10, 1974

Supersedes PL 38-830, pages 1-4, dated August 22, 1974

E. D. C/1993/PL

## Single Phase Loadbreak Disconnect

Type LB-1 Switches

7.8, 15 and 25 Kv, 400 and 600 Amp.  
Continuous and Loadbreak

### Design Features

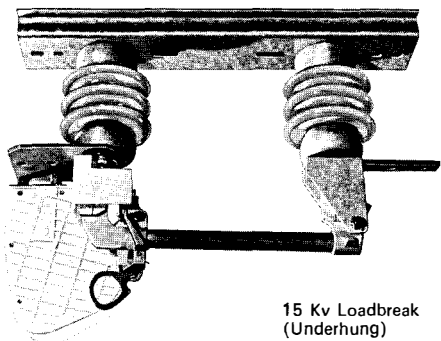
**Loadbreak:** Delrin arc chute and quick break blade assure safe positive operation.

**Installation:** Switch is assembled with two insulators, on a base which can be single or double cross-arm mounted, either vertically or underhung.

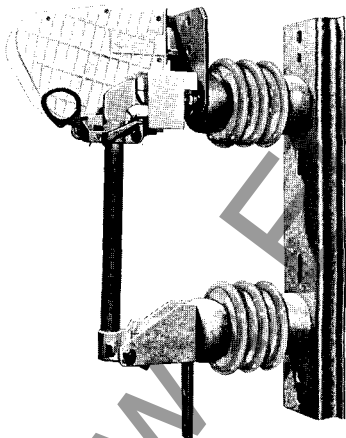
**Operation:** A hookstick operated switch operating in a manner similar to the type LBU cutout. The switch blade is hinged on a captive pivot, thereby, allowing underhung construction.

**Main Contacts:** Stationary contacts are of the modified knife type providing long life operation at full rating. The quick break blade and contacts within the Delrin arc chute are identical with those in the three phase LB-3 switch.

**Terminal Arrangement:** Two hole pads provide necessary mounting holes for most commercially available fittings. They are tin-plated for use with either copper or aluminum terminals.



15 Kv Loadbreak  
(Underhung)

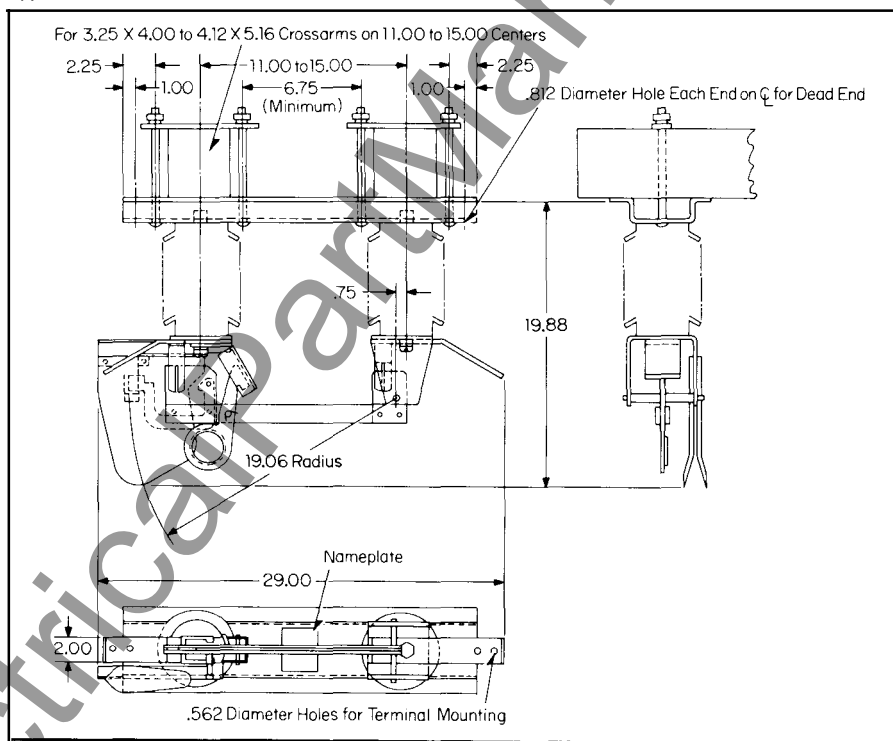


15 Kv Loadbreak  
(Vertical Mount)

### List Prices LB-1

KV	Continuous and Loadbreak Current	Ramad W-11	BIL-KV	Style Number	List Price
7.8/13.8	400	20478	95	634A061A01	\$124.00
7.8/13.8	600	20479	95	634A062A01	137.50
15	400	34428	110	632A662A01	137.50
15	600	20482	110	634A064A01	151.25
14.4/24.9	400	11213	125	632A900A01	151.25
14.4/24.9	600	15824	125	634A066A01	165.00

### Dimensions In Inches (Approximate) Type LB-1 Loadbreak



Further Information  
Application Data 38-831