

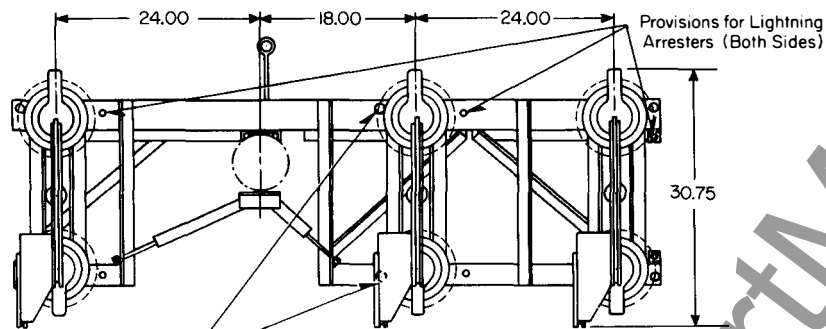


February, 1976  
New Information  
E, D, C/1993/PL

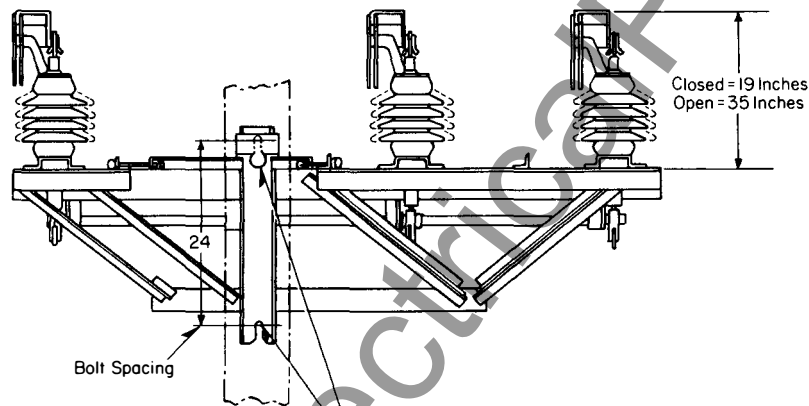
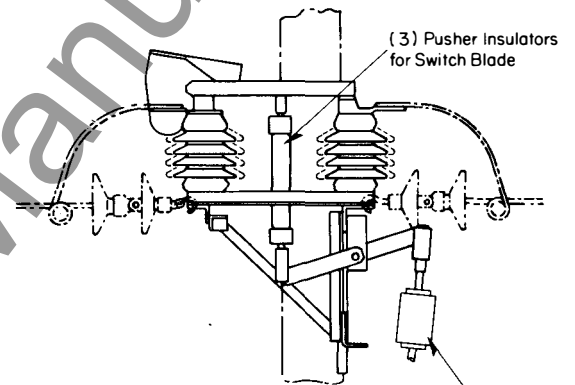
Types LB-3, LB-3V, and LB-3F  
3  $\phi$  Switches  
Type LB-1 1  $\phi$  Switches  
7.8/13.8, 15, and 14.4/24.9 kv, 400 and  
600 Amp. Continuous and Loadbreak

## Three Phase and Single Phase Loadbreak Disconnects

Type LB-3-Dimensions in Inches (Approx.) all ratings



Balance Point for Lifting,  
use Rope or Chain Sling



Provision for Two .750 Inch Square Head Mounting Bolts  
Top Bolt Hole has Non-Turning and Jump-Proof Feature  
(Bolts to be Supplied by Purchaser)  
Length of Bolts to be Pole Diameter plus 2.00 Inches Minimum

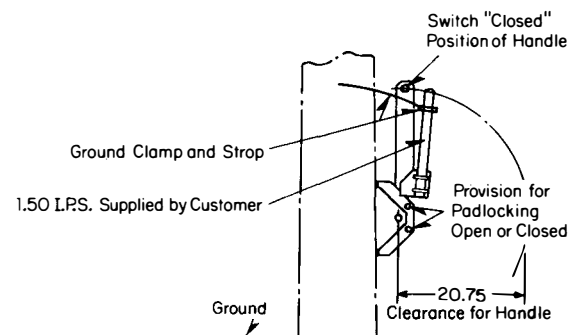


Figure 1

Type LB-3V-Dimensions in Inches (Approx.) all ratings

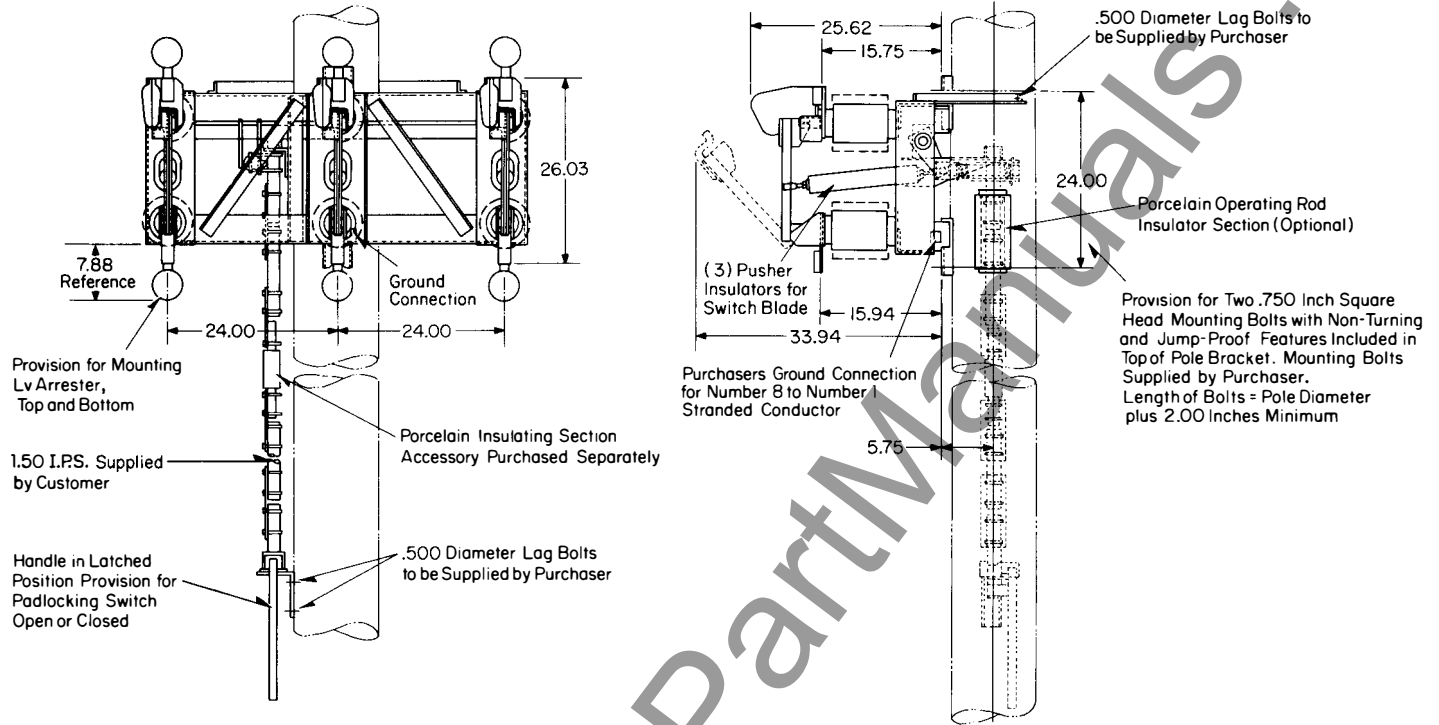


Figure 2

Type LB-3V

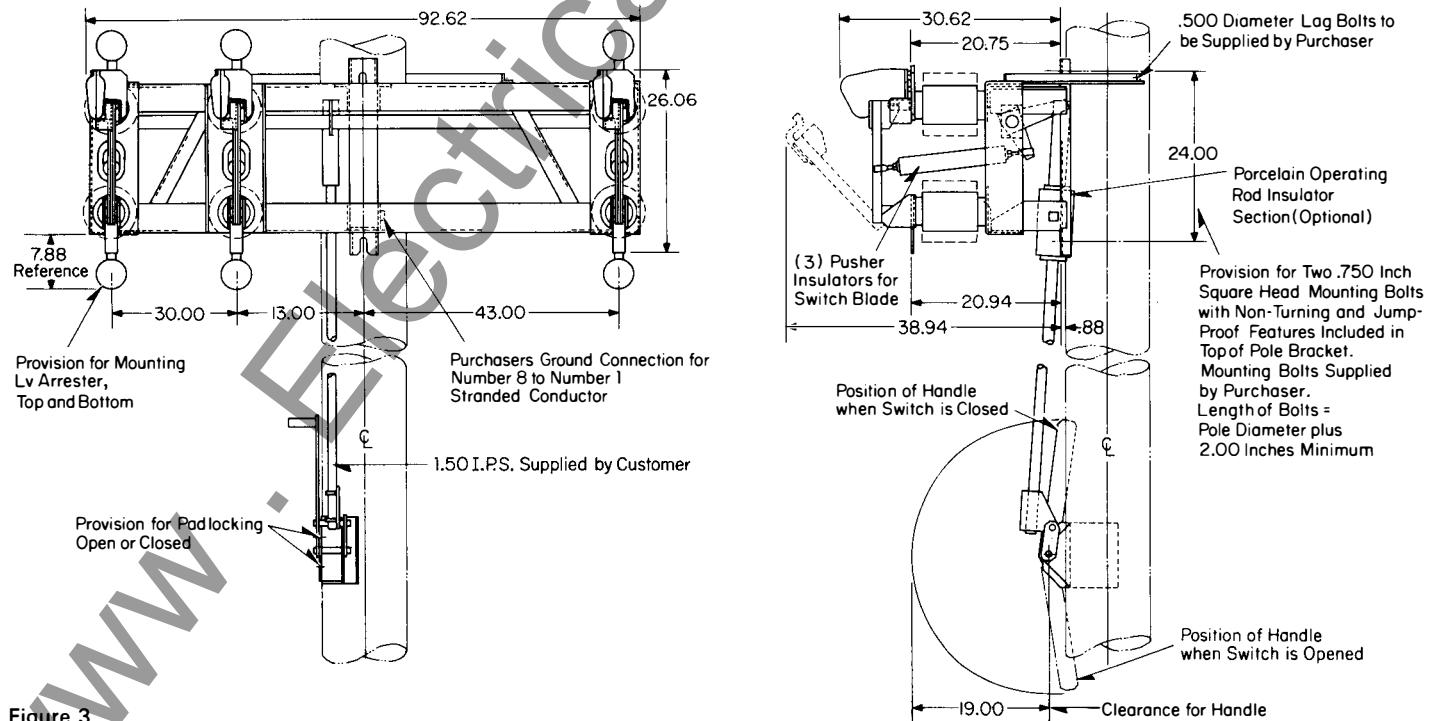


Figure 3



**Type LB-3F-Dimensions in Inches (Approx.) all ratings**

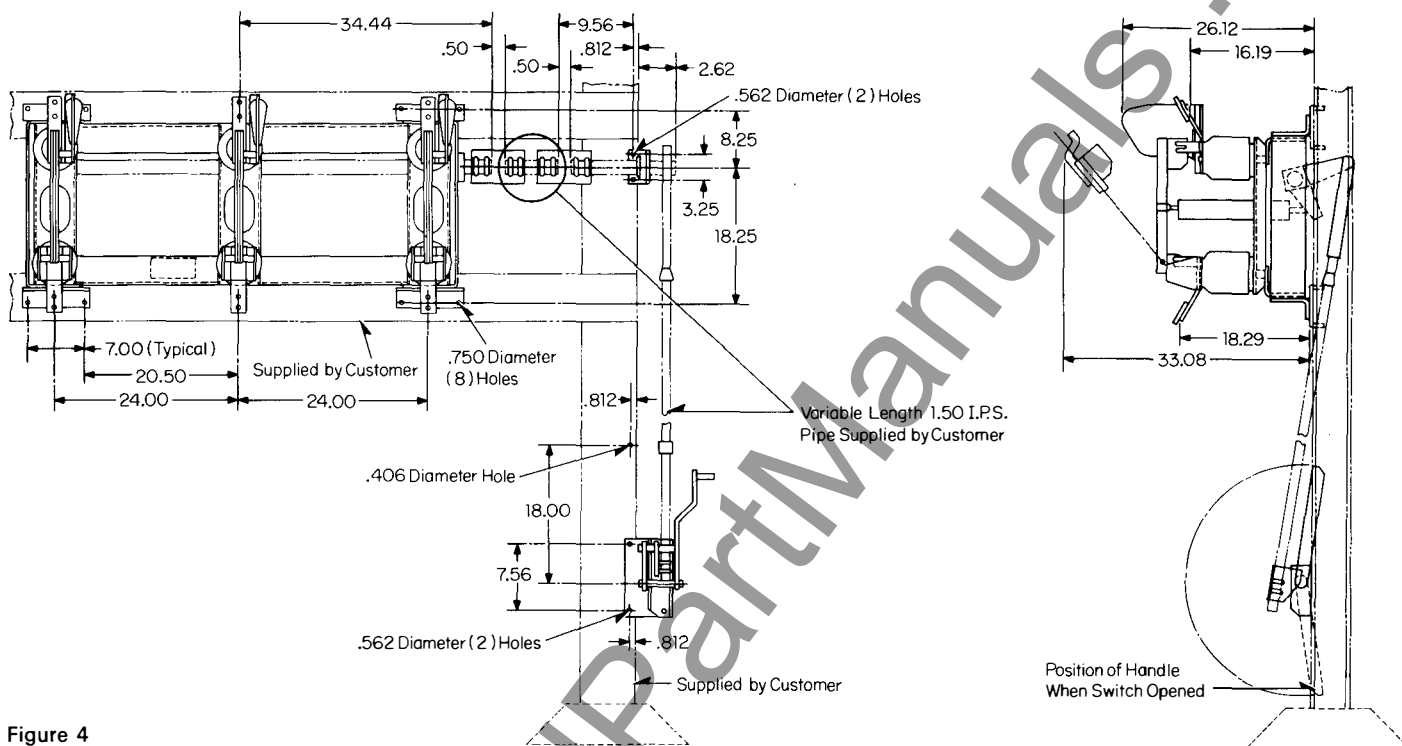


Figure 4

## Type LB-3F

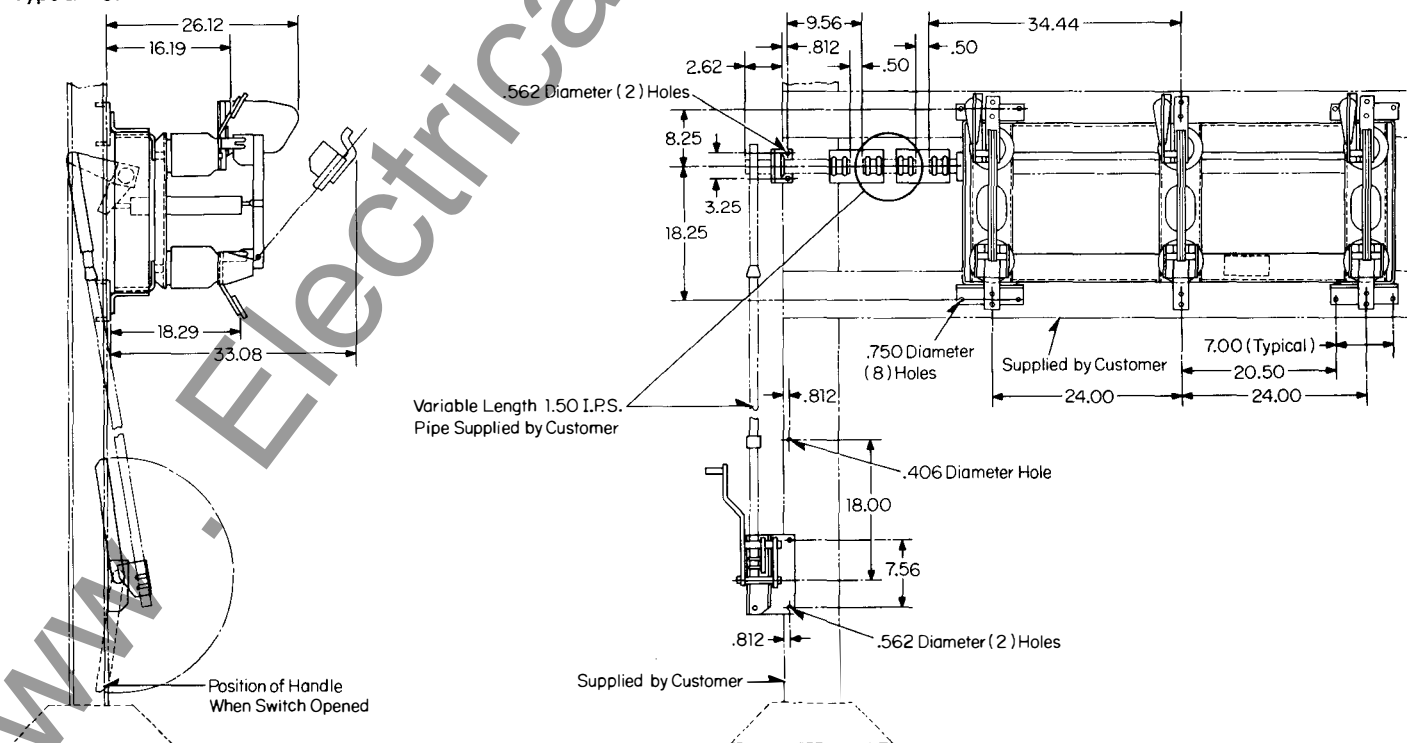


Figure 5

Type LB-1 - Dimensions in Inches (Approx.)

For 3.25 X 4.00 to 4.12 X 5.16 Crossarms on 11.00 to 15.00 Centers

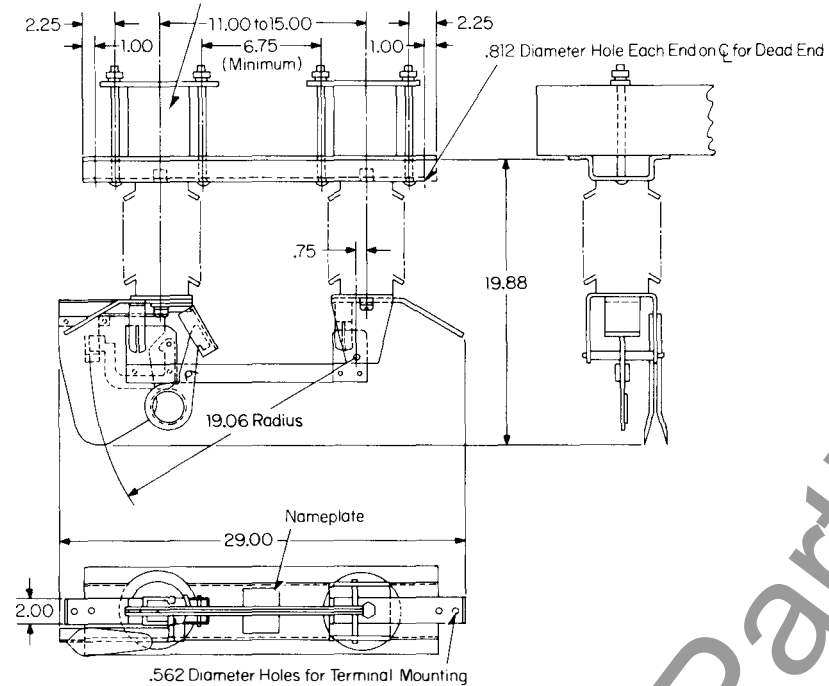


Figure 6

Further Information  
38-830 P WE A

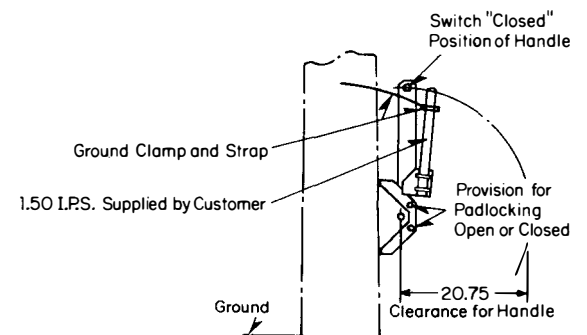
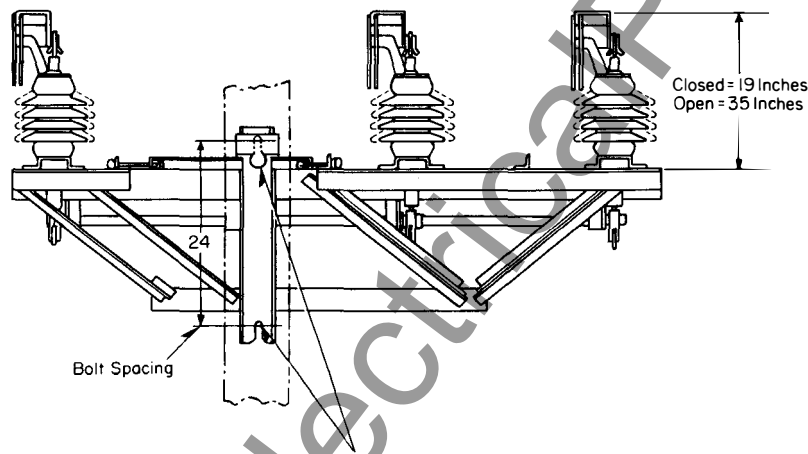
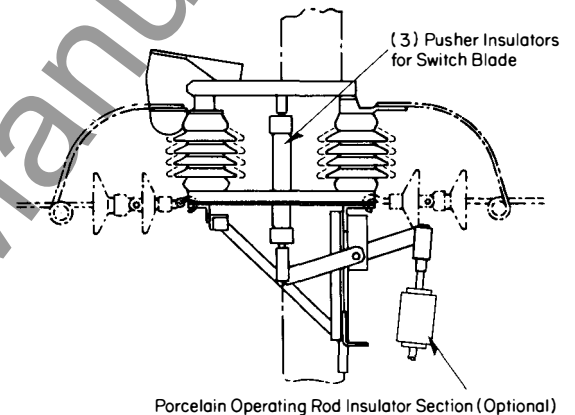
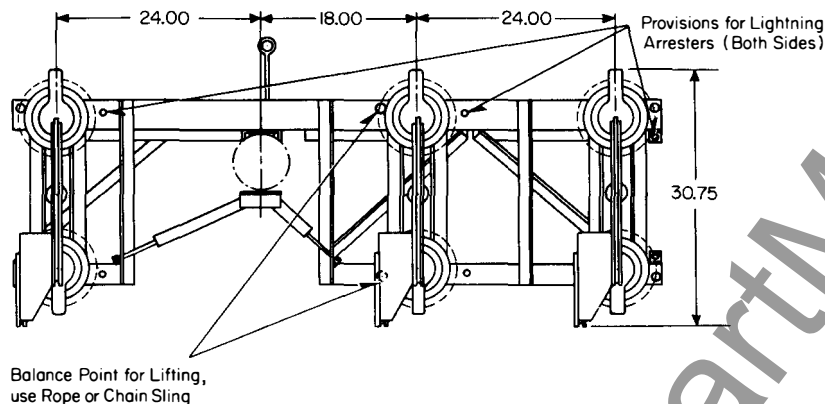


February, 1976  
New Information  
E, D, C/1993/PL

Types LB-3, LB-3V, and LB-3F  
3  $\phi$  Switches  
Type LB-1 1  $\phi$  Switches  
7.8/13.8, 15, and 14.4/24.9 kv, 400 and  
600 Amp. Continuous and Loadbreak

## Three Phase and Single Phase Loadbreak Disconnects

Type LB-3-Dimensions in Inches (Approx.) all ratings



Provision for Two .750 Inch Square Head Mounting Bolts  
Top Bolt Hole has Non-Turning and Jump-Proof Feature  
(Bolts to be Supplied by Purchaser)  
Length of Bolts to be Pole Diameter plus 2.00 Inches Minimum

Figure 1

Type LB-3V-Dimensions in Inches (Approx.) all ratings

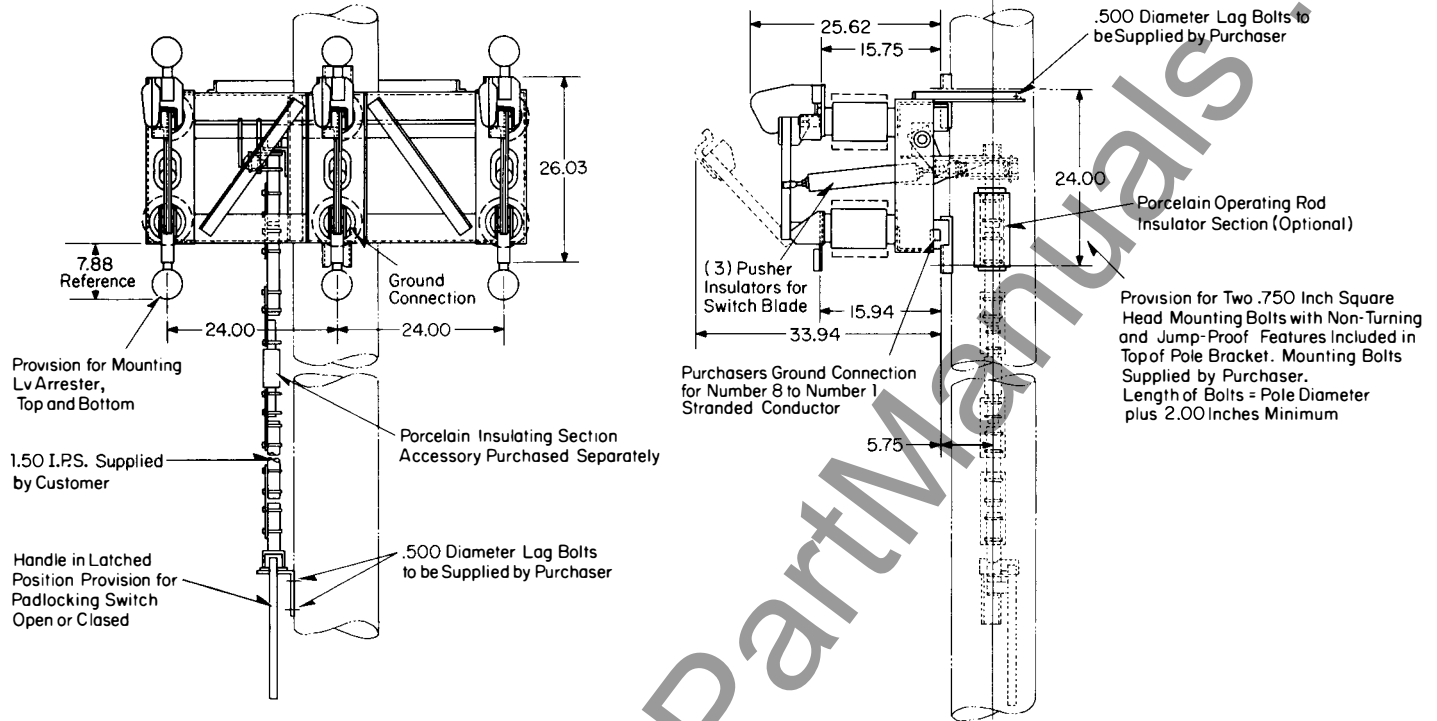


Figure 2

Type LB-3V

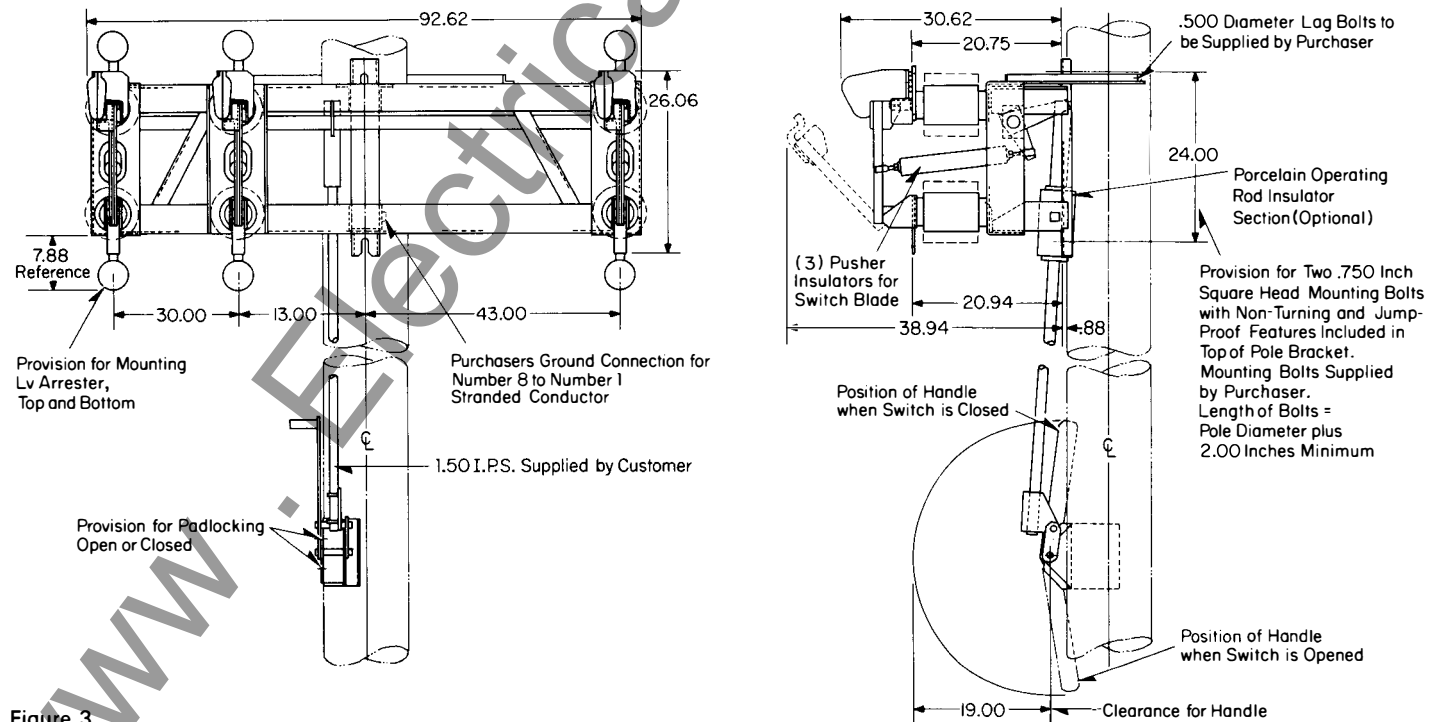


Figure 3



Type LB-3F- Dimensions in Inches (Approx.) all ratings

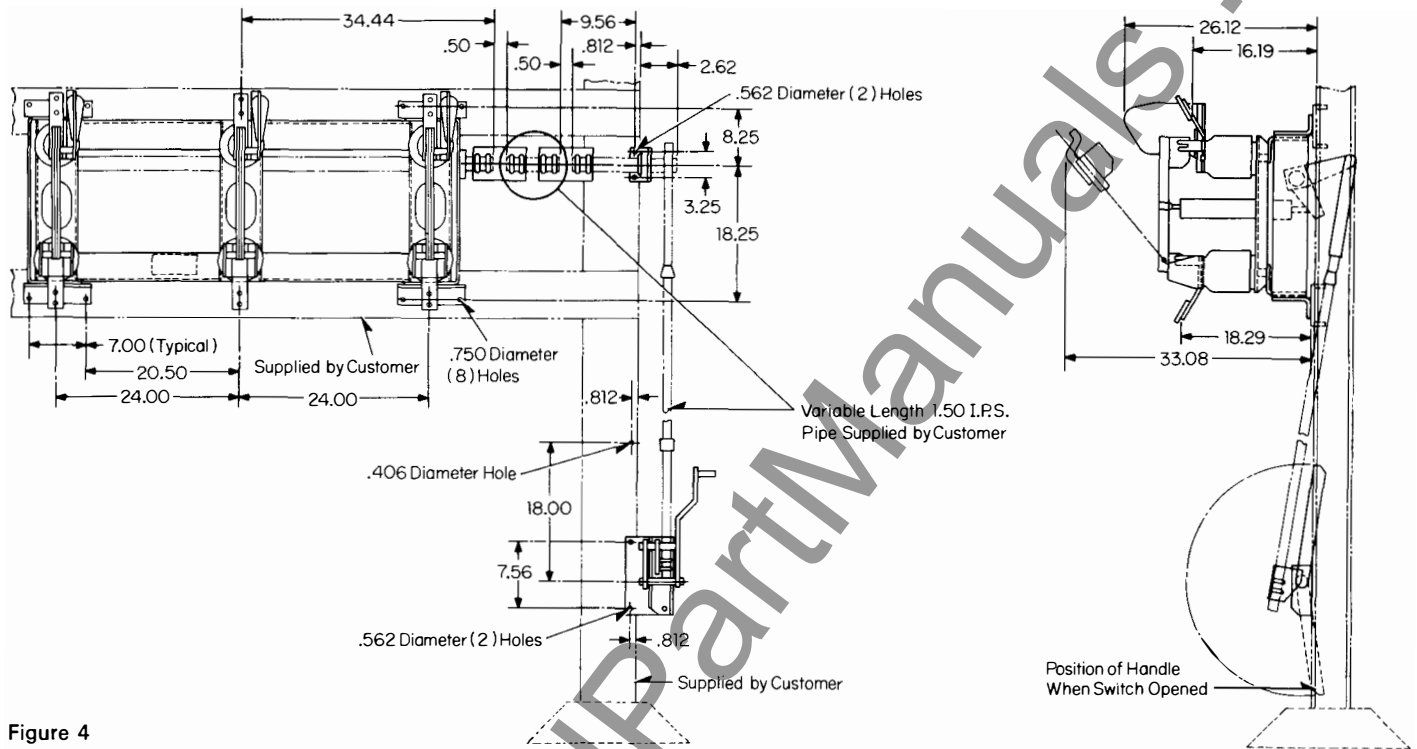


Figure 4

Type LB-3F

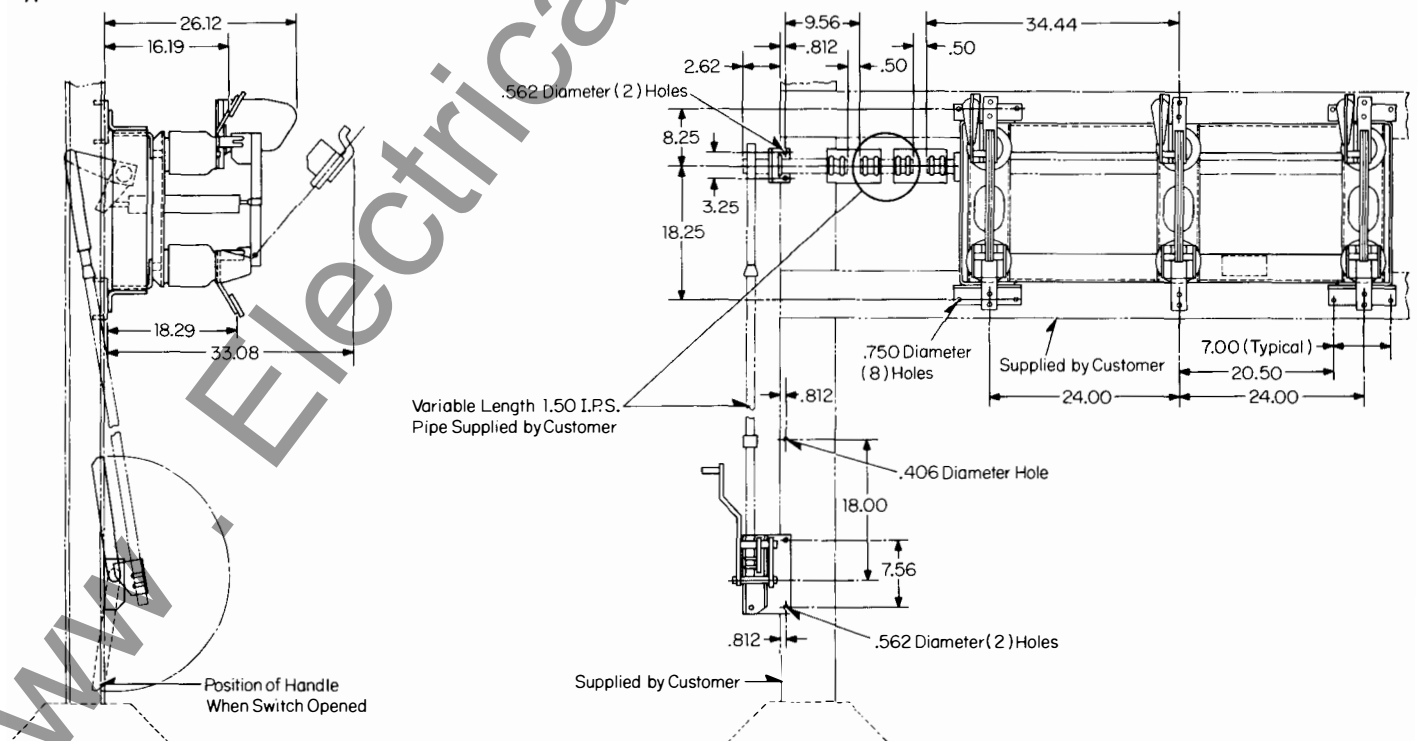


Figure 5



Type LB-1 - Dimensions in Inches (Approx.)

For 3.25 X 4.00 to 4.12 X 5.16 Crossarms on 11.00 to 15.00 Centers

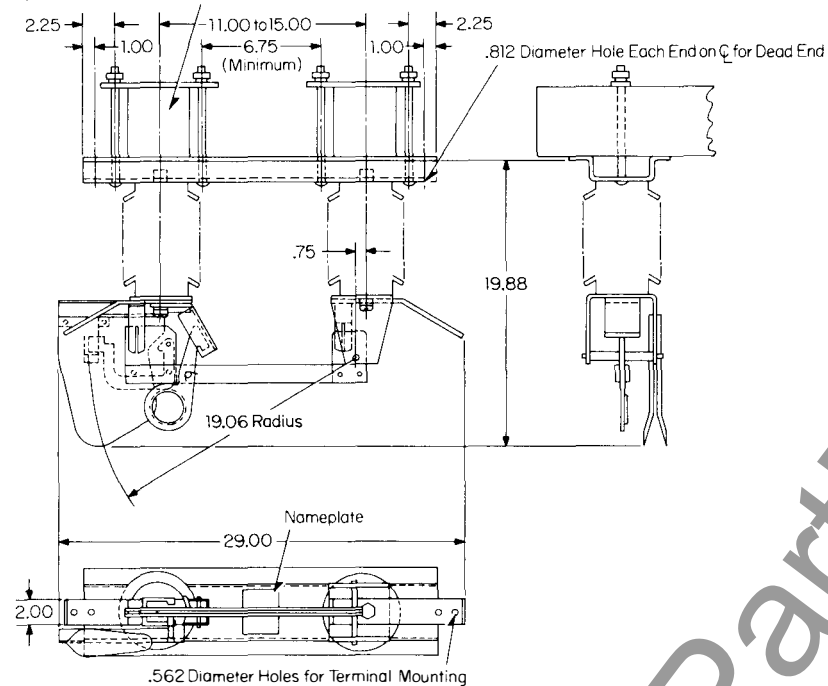


Figure 6

Further Information  
38-830 P W E A