

# INSTALLATION • OPERATION • MAINTENANCE I N S T R U C T I O N S

## TYPE HZ IMPEDANCE RELAY (Single Z3 Contact-Directional Controlled Timer)

**CAUTION** Before putting protective relays into service, remove all blocking which may have been inserted for the purpose of securing the parts during shipment. Make sure that all moving parts operate freely. Inspect the contacts to see that they are clean and close properly, and operate the relay to check the settings and electrical connections.

### APPLICATION

The type HZ relay is a three-unit high speed relay of the zoned distance type operating instantaneous or with a time-delay depending upon the location of the fault. The relay is used for directional phase fault protection on transmission systems and is designed to be used either independently or in the high-speed carrier relaying system. The impedance of the transmission line is measured by comparing the current and the voltage of the line. The fault impedance must be less than the minimum expected load impedance.

### CONSTRUCTION

The type HZ relay contains three instantaneous impedance units, a synchronous timer, a directional unit, auxiliary contactor switches, and operation indicators.

#### IMPEDANCE UNITS

Construction details of these units are shown in Fig. 1. A balanced beam is pulled downward on the contact end by a current coil and on the other end by two voltage coils. The fluxes of these two potential coils are shifted out of phase with respect to each other to produce a steady pull so that practically a constant balance can be obtained regardless of the phase angle between the current and voltage coil fluxes. A tap screw on the front of the unit permits changing the number of turns on

the current coil, and a core screw on the bottom of the unit changes an air gap in the magnetic path. These two adjustments make it possible to set the unit.

On the first unit (Z1) a rectangular silver contact is flexibly fastened on the forward end of the beam. As the beam trips, the contact bridges two silver stationary hemispherical contacts mounted on the free end of two short leaf springs. A small set screw determines the position of each leaf spring and provides means for adjusting the contact gap.

On the second and third units (Z2 and Z3) the moving contact is a thin-walled silver shell practically filled with tungsten powder. When this contact strikes the rigid stationary contact, the movement of the tungsten powder creates sufficient friction to absorb practically all of the energy of impact and thus the tendency of the contact to bounce is reduced to a minimum. The moving contact is loosely mounted on the unit beam and held in place by a leaf spring. The construction is such that the beam continues to move slightly after the contacts close, deflecting the spring which provides the required contact follow. This spring should have zero tension on the contact when the beam is in the reset position. Current is conducted into the moving contact by means of a flexible metal ribbon.

On both the second and third unit beams a thin-walled cylinder filled with tungsten powder is mounted near the rear end of the beam. This acts as a counterweight and tends to damp out vibrations in the beam in the manner described above for the unit contacts.

#### SYNCHRONOUS TIMER

The timer is a small synchronous motor which operates from the current circuit through a

**SUPERSEDES I.L. 41-466.1B**

**\*Denotes Change From Superseded Issue**

**EFFECTIVE MARCH 1963**

## TYPE HZ IMPEDANCE RELAY

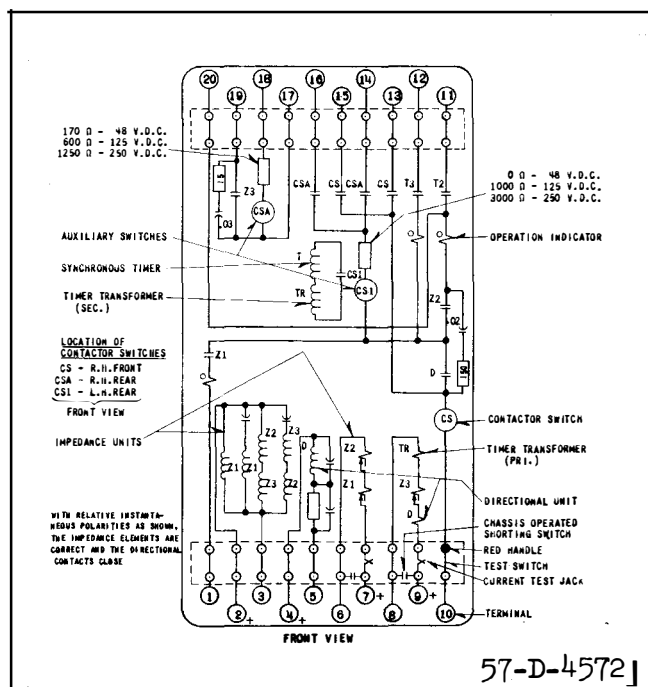


Fig. 3 Internal Schematic of the Type HZ Relay in the Type FT42 Case.

consists of the following contacts: First zone, directional and first impedance unit; Second zone, directional, second impedance and timer unit, (first set of contacts); Third zone, directional and timer unit (second set of contacts). The coil of one of the contactor switches (CS) is in series with all of the contacts above and with the trip coil of the breaker. When the trip coil is energized the contactor switch contacts seal around the relay contacts, thereby relieving them of the duty of carrying the tripping current. These contacts remain closed until the trip circuit is opened by the auxiliary switch on the breaker. The contactor is equipped with a third point which is connected to a terminal on the relay and may be used to operate a bell alarm whenever the relay trips the breaker. An auxiliary switch on the circuit breaker must be provided so that when the circuit-breaker is tripped, the tripping circuit will be opened by this switch.

The synchronous timer is directionally controlled; that is, it operates only for a fault in the tripping direction and within the reach of the third impedance unit. Upon the occurrence of such a fault, the directional (D) and third impedance (Z3) units close their con-

tacts. The operation of Z3 energizes an auxiliary contactor switch CSA. The contacts of CSA in conjunction with the directional unit contact complete a d-c circuit through another auxiliary contactor switch CS1. The contacts of CS1 in turn connect the synchronous timer motor to the saturating transformer.

### CHARACTERISTICS

The relay is available in two impedance ranges: 0.6 to 6.0 ohms and 0.2 to 2.0 ohms. The tap and scale markings are as follows:

#### 0.6 to 6.0 Ohm Relay

Unit	Taps					
First	6.2	9.4	13.5	20.8	29.8	45
Second	6.2	9.4	13.5	20.8	29.8	45
Third	12.	18.	27.	40.	60.	90

#### 0.2 to 2.0 Ohm Relay

First	2	3	4	6	9	13
Second	3.1	4.2	6.2	9.1	13	20
Third	12	18	27	40	60	90

#### Ccore Screw Markings on Both Relays

First	0.8	1.0	1.2	1.4	1.6†
Second	1.4	1.6	1.8	2.0	2.2
Third	1.4	1.6	1.8	2.0	2.2

† 0.2 to 2.0 Ohm Relay Only

The time delay on the synchronous timer for the second and third impedance element is adjustable from approximately zero to 180 cycles.

Both 50 cycle and 60 cycle relays are available. The relays are not interchangeable as different coils and timers are used.

### MINIMUM VOLTAGE REQUIREMENT

The minimum length of line to which the type HZ relay can be applied must be long enough to produce at least 5 volts on the relay when a short circuit exists at the balance point of the first unit and minimum short circuit is flowing. If the voltage on the relay becomes less than 5 volts, the forces become too small to assure fast and positive action. The minimum voltage limit for the second zone is 10 volts.

## SETTINGS

The type HZ relay requires a setting for each of the three impedance units and on the synchronous timer for the second and third zone. The following nomenclature will be used:

$Z$  = the line-to-neutral ohmic impedance of the protected line from the relay to the desired balance point.

For the First Unit = 80 to 90% of the protected section.

For the Second Unit = Approx. 50% into the adjacent section.

For the Third Unit = Approx. 25% into the third line section.

$R_C$  = the current transformer ratio.

$R_V$  = the potential transformer ratio.

$T$  = the impedance unit current tap value.

$S$  = the impedance unit current core screw value. The values appear as a series of dots on the drum of the lower core screw adjusting knob.

Since the voltage circuit of the relay is the same at all times, the balance point of the unit is adjusted by changing the pull on the current coil. This is done by taps ( $T$ ) on the current coil winding, and by the core screw ( $S$ ) which varies the magnetic air gap for the current flux.

The method of arriving at the tap setting is by the use of the following formulas:

First and second impedance unit receiving delta current use:

$$TS = \frac{10 Z R_C}{R_V}$$

Third impedance unit receiving star current use:

$$TS = \frac{17.3 Z R_C}{R_V}$$

The nomenclature is as defined before. The tap  $T$  is obtained by dividing the  $TS$  produce

by  $S$  to give an available tap number. When changing taps, the extra tap screw should be screwed in the desired tap before removing existing tap screw to prevent open circuiting the current transformers.

The numbers on the core screw appear in ascending order as the core screw is screwed into the core. In some cases, a question of doubt may arise whether the scale setting is correct, or is out by one full turn of the core screw. In such a case, the point may be verified by turning the core screw all the way in. Then back out the core screw until the highest scale marking just comes under the end of the pointer. This will occur in approximately one turn. To prevent such doubt it is recommended that the core screw setting be made by thus locating the highest scale marking and then continuing to back it off until the desired value appears exactly under the end of the pointer. Sufficiently accurate setting can be made by interpolating between the marked points when necessary.

For first impedance unit the above formula is based on the relay being used on a  $60^\circ$  line and is correct for lines of that angle. For lines other than  $60^\circ$  a slight error is introduced which may be as much as 8 percent and 6 percent on  $40^\circ$  and  $80^\circ$  lines, respectively. However, the formula relay setting can be corrected for lines other than  $60^\circ$  by using the curve of Fig. 5. The scale reading should be decreased so that the current to trip the beam at the line angle is equal to the current to trip on a  $60^\circ$  line. This does not affect the second and third impedance units, since they are practically independent of phase angle as shown in Fig. 5.

The formula settings are sufficiently accurate for most installations. Where it is desired to set the balance point more accurately the tap and scale values may be checked by applying to the relay the voltage, current, and phase angle conditions which will be impressed on it for a fault at the desired balance point. A slight change in the scale value from that calculated may be required so that the relay will just trip for the simulated fault at the balance point.

The particular setting of one unit may have some influence on the adjacent unit. The

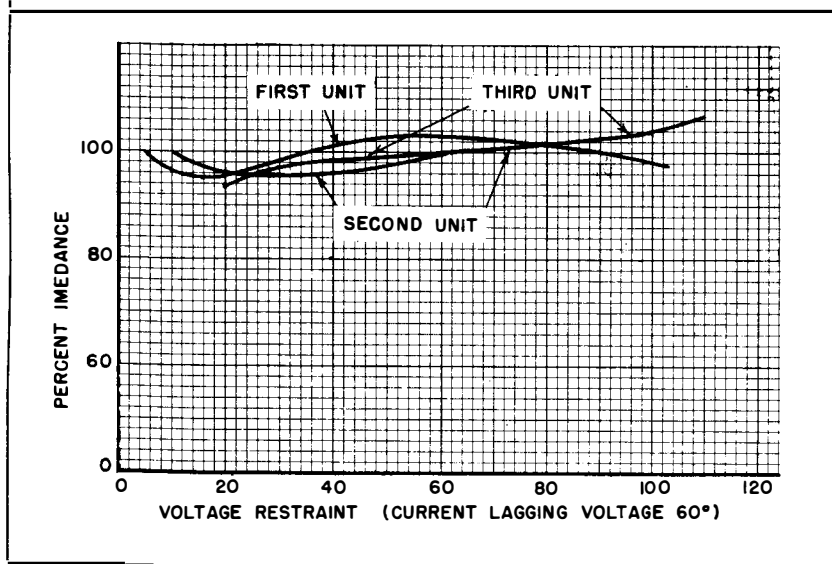


Fig. 4 Typical Impedance Curves for all Three Units.

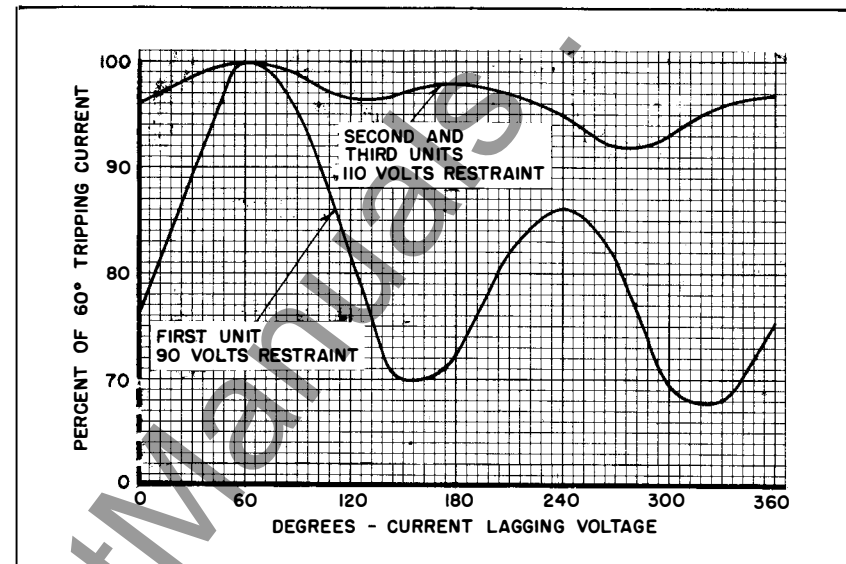


Fig. 5 Typical Phase Angle Curves for all Three Units.

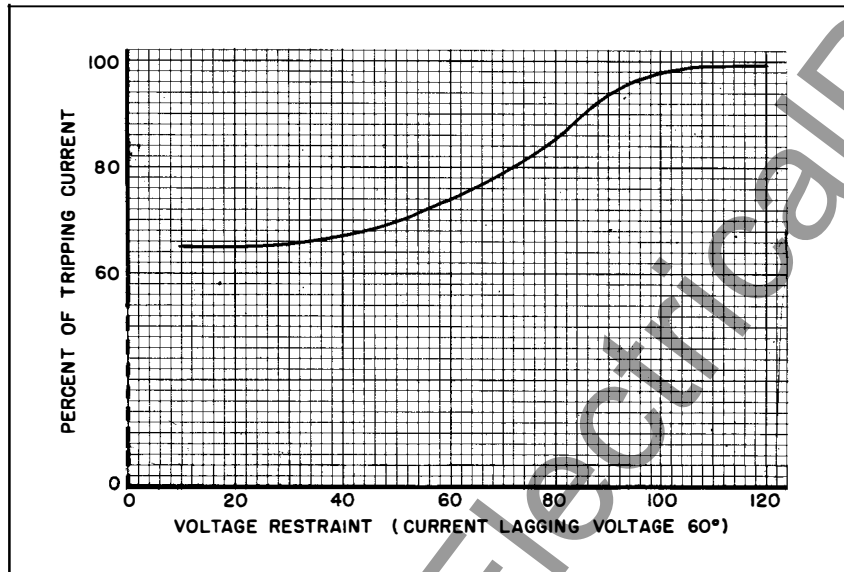


Fig. 6 Typical Reset Curves for the First Unit.

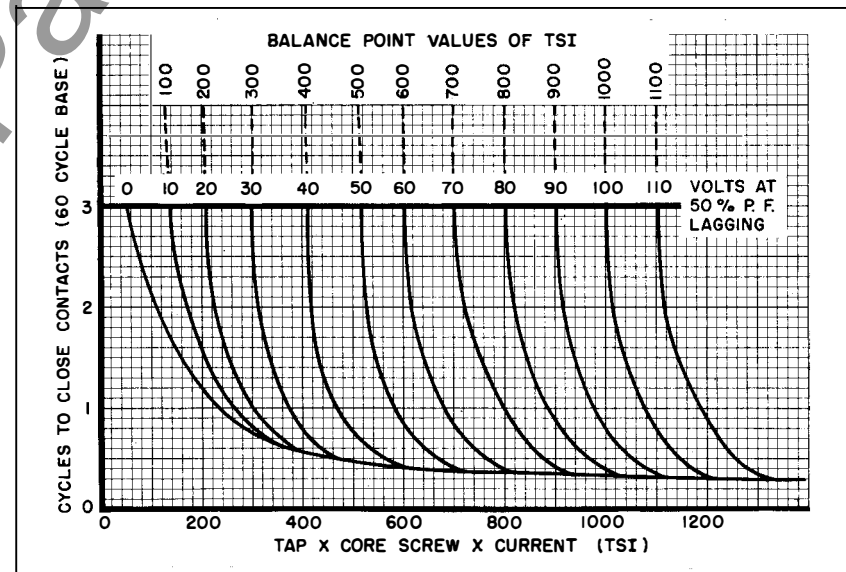


Fig. 7 Typical Time of Operation Curves for the First Unit.

factory calibration of the core screw is made with taps cascaded 29.8, 45, and 60 for the .6 to 6 ohm relay zone 1, 2, and 3 respectively. Taps 13, 20, and 40 are used for the .2 to 2 ohm relay. If the ratio of the taps used are considerably different from those used in calibration, it is desirable to set the relay with the voltage, current, and phase angle conditions for a fault at the desired balance point. The 30° shift of the third zone current on a 3-phase fault has a negligible effect; however, when calibrating zone 2, the tap on zone 3 should be set one or two taps below the setting to be used on zone 3.

As an example of the formula setting, set the first impedance unit to protect a 60° 110 kv line, 75 miles long. The line to neutral impedance is .75 ohm per mile. The current transformer ratio of 400/5, and the potential transformer ratio of 1000/1. The first unit is to protect 90 percent of the line section or for a balance point  $.90 \times 75 \times .75 = 50.6$  ohms away. Then

$$TS = \frac{10 \times 50.6 \times 80}{1000} = 40.5$$

Set tap = 29.8 and core screw = 1.36 on a 0.6 to 6.0 ohm relay.

The setting for the second and third impedance unit is obtained in the same manner, using the proper value of Z, and the proper constant in the formula.

The time delay on the synchronous timer is set to coordinate with the relays backed up by the second and third impedance units. The setting is made by moving each stationary contact assembly to the desired position as indicated by the scale.

On lines where taps or paralleled feeders supply fault power to the adjacent sections the apparent impedance to the relay backing up the adjacent section is greater than the actual impedance. The reason for this is that the relay does not measure the additional fault current supplied by the other feeders, but at the same time, this current does increase the voltage drop from the fault to the relay. This increases the apparent impedance to the adjacent section by the ratio of the total current to the relay current. The effect on the

relay impedance elements is to back up the balance point of the second and third impedance units. In order to extend the range of back-up protection under these conditions, the second unit can be set for a balance point further than the 150 percent normally recommended, provided it is made to time select with the adjacent section relay second unit. Similarly, the third unit can be set farther than normal if it is made to select with the second and third units of the adjacent relay which it overlaps.

## INSTALLATION

The relays should be mounted on switchboard panels or their equivalent in a location free from dirt, moisture, excessive vibration, and heat. Mount the relay vertically by means of the four mounting holes on the flange for semi-flush mounting or by means of the rear mounting stud or studs for projection mounting. Either a mounting stud or the mounting screws may be utilized for grounding the relay. The electrical connections may be made directly to the terminals by means of screws for steel panel mounting or to the terminal studs furnished with the relay for thick panel mounting. The terminal studs may be easily removed or inserted by locking two nuts on the stud and then turning the proper nut with a wrench.

For detailed FT case information refer to I.L. 41-076.

## CONNECTIONS

### IMPEDANCE UNITS

The impedance to the balance point is measured from the point where the potential transformers are connected to the protected line. For protecting transmission lines, the relays should receive potential from potential transformers connected directly to the line at the point from which the impedance is to be measured or the bus to which the line is connected.

In some applications a power transformer bank forms part of the transmission line, and potential transformers are available only on the bus side of the bank. In this case the relays may be set thru the bank to protect the line only if the bank impedance is not too large as compared with the line impedance. If the bank impedance is too large in comparison

## TYPE HZ IMPEDANCE RELAY

with the line impedance, the 80 or 90 percent setting of the first unit may cover only a very small percentage of the transmission line or in some cases not cover any of the line section. For the same reason the second and third units will offer considerably less back-up protection over the adjacent lines. In order to use the potential transformers on the bus side of the bank under this condition, type KX compensators are used and the impedance measured from the line side of the bank to the balance points. The type KX compensators operate from the current transformers and provide voltage compensation equivalent to the drop in the power bank. The setting of the KX compensator is covered by I.L. 41-861.

The above discussion assumes that power is fed through the bank to faults on the line. Where a power transformer connects to a high tension transmission line and does not supply power to a line fault, low-tension potential transformers may be used without compensation. Then, the impedance to the balance point is measured from the point where the power bank connects to the protected line.

The conventional star connection of current transformer is not satisfactory where accurate distance relay protection is desired. With this connection the balance points of the impedance units shift about 15 percent depending upon whether a phase-to-phase, a 3-phase or a 2-phase-to-ground fault is involved. That is, if the balance point were adjusted at 80 percent for a 3-phase fault, then for a 2-phase-to-ground fault the shift may be more or less than plus or minus 15 of the 80 percent setting, depending upon the ratio of the zero sequence impedance to the negative sequence impedance of the system from the source of power to the fault. This error can be entirely eliminated by making use of the vector difference between the line current, (i.e. delta currents) for actuating the relay.

The most common method is to connect the main current transformers in star and use a set of auxiliary 5/5 ratio transformers to supply delta currents to first and second impedance elements, as shown in Fig. 9. These auxiliary transformers need not be of very large volt-ampere capacity, as they supply only the impedance current coils which are of very low burden (approximately 5 volt-amperes)

for the average setting. The directional unit, third impedance and timer coils receive star current from the main current transformers. Since the third impedance unit functions primarily as a fault detector, the accuracy of its setting is relatively unimportant.

The delta voltages used on the first and second impedance units of the relays should be in phase with the delta current, at unity power factor. On the third impedance unit the delta voltage should lead the star current by  $30^\circ$  at unity power factor. The third impedance cannot be connected to receive 8.66 amperes delta current unless special coils are provided.

### DIRECTIONAL UNIT

The magnetic design of the unit and potential circuit is such that maximum torque occurs when the current leads the voltage by approximately  $30^\circ$ . Thus, the directional unit coils should be connected to receive current that leads the voltage by  $90^\circ$  when the line power factor is 100 percent. This will result in operation at approximately the maximum torque angle for transmission line faults.

### TRIP CIRCUIT

The contactor switch operates on a minimum of 1.0 ampere, but the trip circuit should draw at least 4 or 5 amperes in order to reduce the time of the operation of the switch to a minimum and provide more positive operation. If the type HZ relay is used to trip an auxiliary multi-contact relay, provision should be made for loading down the trip circuit with a resistor in parallel with the operating coils of the auxiliary relay. Also, since the total trip circuit resistance in the relay is approximately 1.0 ohm, care must be taken to see that the breaker trip coil will receive enough current when low voltage control is used.

The main contacts on the impedance units and directional unit will safely close 30 amperes at 250 volts direct current, and the switch contacts will safely carry this current long enough to trip a breaker.

### ELECTRICAL CHECK POINTS

To check the electrical operation of the

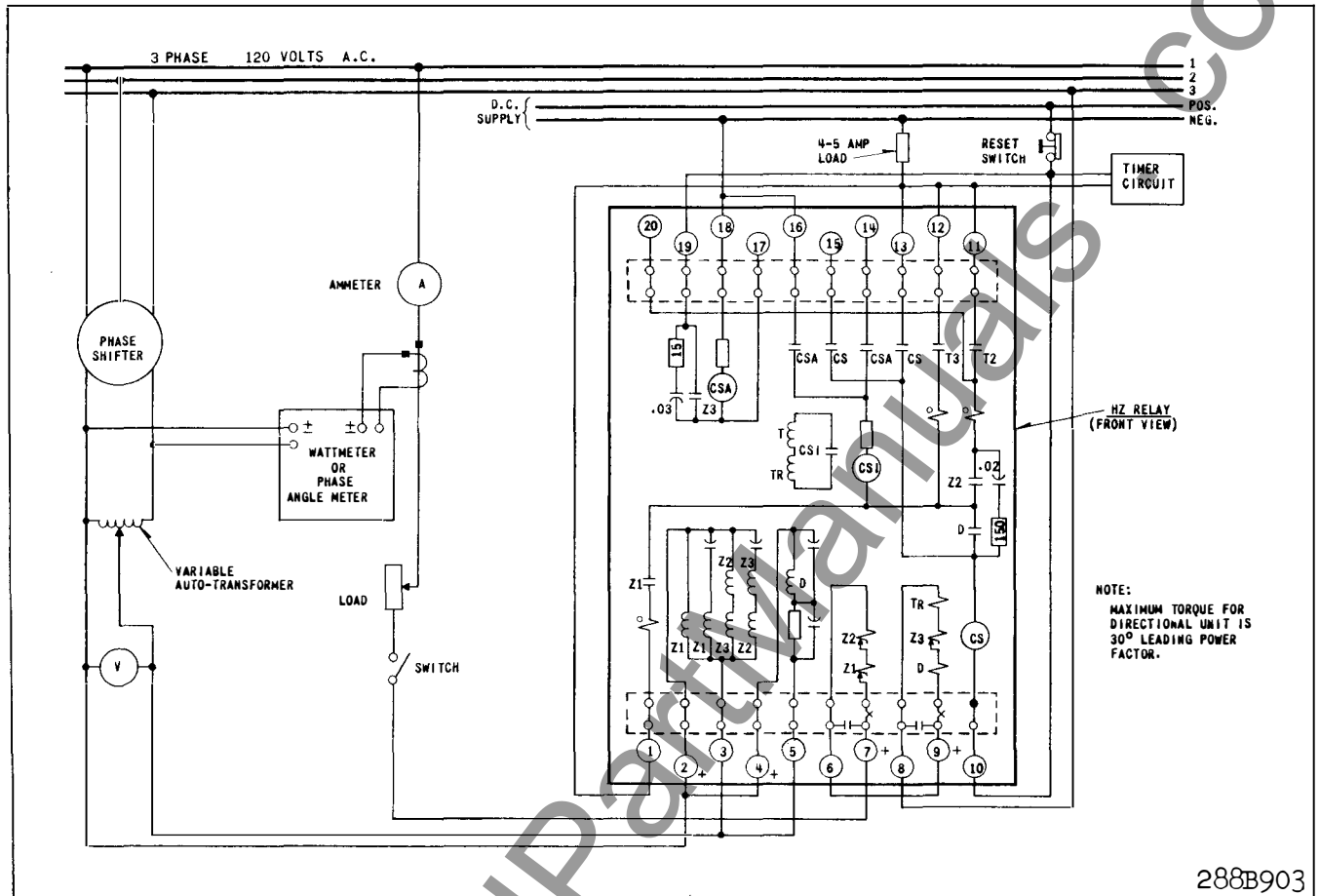


Fig. 8 Diagram of Test Connections for the Type HZ Relay.

relay, the following instruction should be followed.

Connect the relay per Fig. 8 and make the following settings. (The settings of each particular relay with the voltage and current expected at the balance point should be used, if available.)

IMPEDANCE UNITS			IMPEDANCE UNITS		
0.2 to 2.0 Ohm Relay			0.6 to 6.0 Ohm Relay		
Zone	T	S	Zone	T	S
Z <sub>1</sub>	13	1.2	Z <sub>1</sub>	29.8	1.2
Z <sub>2</sub>	20	1.8	Z <sub>2</sub>	45	1.6
Z <sub>3</sub>	60	1.8	Z <sub>3</sub>	90	2.0

**CAUTION:** The relay voltage should be of good wave form. The combination of a phase shifter and autotransformer may give an output voltage

of poor wave form if the magnetizing current of the autotransformer is high in proportion to the impedance of the phase shifter used. In case of doubt, check the output voltage waveform with an oscilloscope.

#### DIRECTIONAL UNIT

With 120 volts and 5 amperes in phase, the directional element should be closed. The contacts should open when the current lags the voltage by approximately 60°.

#### IMPEDANCE UNITS

With 60 volts on the relay, the impedance units should trip when the following currents at 60 degrees lagging are suddenly applied.

.2 to 2 Ohm Relay                      .6 to 6 Ohm Relay

Z<sub>3</sub> I = 5.6 amperes

I = 3.4 amperes

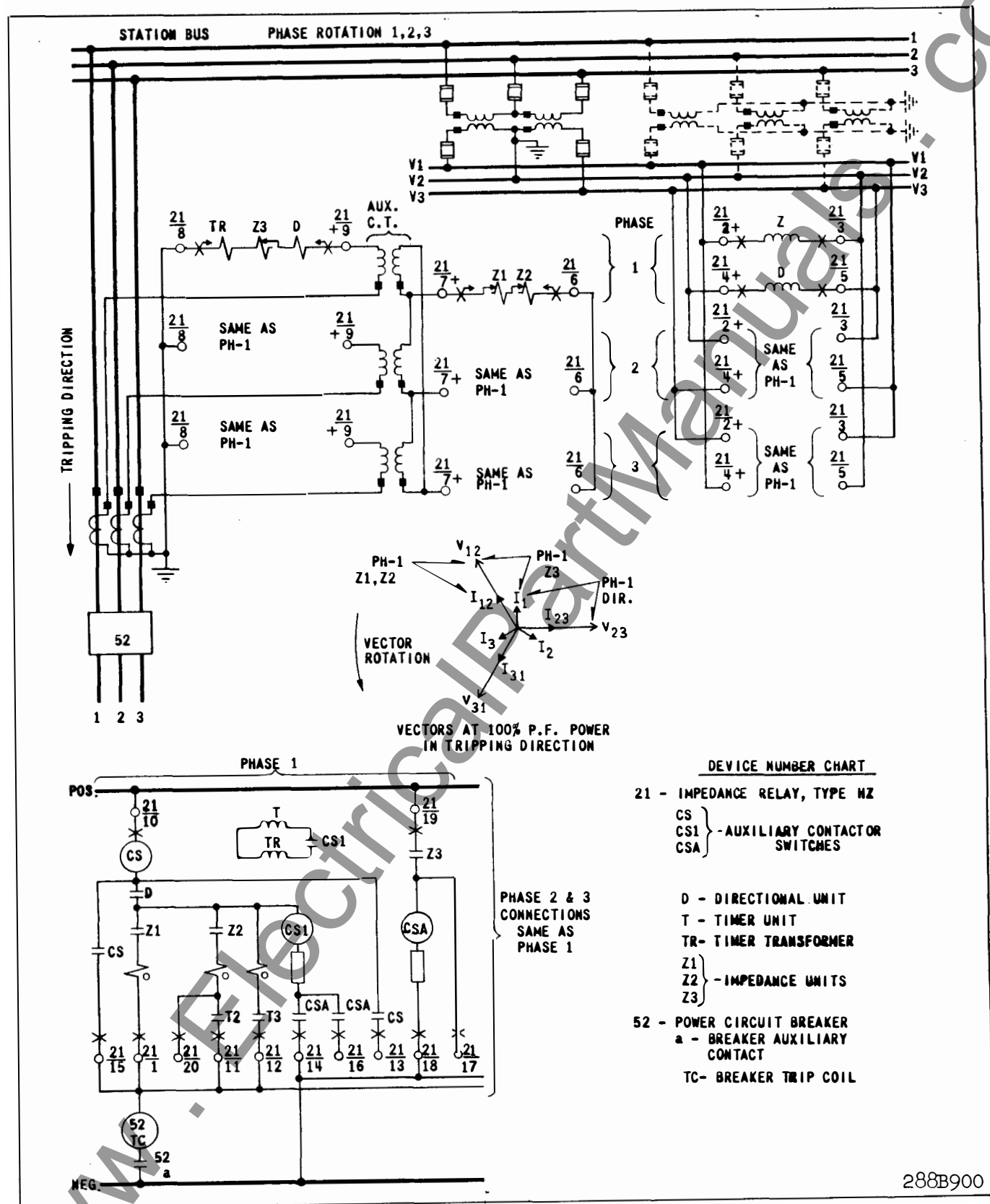
Z<sub>2</sub> I = 16.7 amperes

I = 8.4 amperes

(Z<sub>3</sub> tap on 40)

(Z<sub>3</sub> tap on 60)

## TYPE HZ IMPEDANCE RELAY.



**Fig. 9 External Schematic of the Type HZ Relay for Phase Protection of a Three Phase Transmission Line using Star-Delta Auxiliary Current Transformers.**



With 35 volts on the relay, Z1 should trip when the following currents at 60° lagging are suddenly applied.

0.2 to 2.0 Ohm Relay	0.6 to 6.0 Ohm Relay
Z1 I = 22.4 amperes	I = 9.8 amperes

With the D contact closed, the tripping of Z3 should cause CSA switch to pick up, and CS-1 switch in turn. The operation of CS1 should start the timer. When Z1, Z2 and timer T2, or T3 contacts close, the CS switch should operate and seal around all the contacts. The CSA and CS-1 are not continuously rated; therefore, care should be taken not to overheat these auxiliary switches. The checking of the timer element will depend on the standard time device used. Generally this check is made independently of the trip circuit to avoid circuitry complications. The timer should operate with 3.5 amperes in the timer transformer and with the contacts of CS-1 closed or shorted. An auxiliary relay, as used in the trip circuit, should be used to seal in the timer circuit.

### ADJUSTMENTS AND MAINTENANCE

The proper adjustments to insure correct operation of this relay have been made at the factory and should not be disturbed after receipt by the customer. If the adjustments have been changed or the relay taken apart for repairs, or if it is desired to check the adjustments at regular maintenance periods, the instructions below should be followed.

All contacts should be cleaned periodically. A contact burnisher S#182A836H01 is recommended for this purpose. The use of abrasive material for cleaning contacts is not recommended, because of the danger of embedding small particles in the face of the soft silver and thus impairing the contacts.

#### IMPEDANCE UNITS

The voltage circuit on the first impedance unit is designed to have a peaked phase angle curve. This design in conjunction with the contact arrangement enables the first zone to operate with a 5 volt balance point voltage.

The voltage circuit on the second and third impedance units is designed to have a com-

paratively flat phase angle curve. This is accomplished by energizing the two coils with currents that are essentially equal and 90° out of phase. The gaps as shown in Fig. 1 are nominal dimensions. The actual gaps on any particular relay may vary a few thousandths from these values.

If the voltage circuits have been disassembled, the gaps referred to in Fig. 1 provide a nominal starting point for calibration. This is accomplished as follows:

#### FIRST IMPEDANCE UNIT

Refer to Fig. 1. Adjust the stop-screw on the rear of the beam to give a clearance of .025 inch between the beam and the voltage iron circuit. With the beam in the reset position i.e., with the stop screw against the stop, adjust the vertical gap for .009 inch between the adjustable iron and the beam. Care should be taken in this adjustment to keep the gap the same as both sides. Also, with the beam in the same position adjust the gap between the front end of the beam and the stop in the upper core screw to .020 inch.

The beam should be balanced as follows. Connect the relay with polarities as shown in the test diagram, Fig. 8. With any tap and scale setting, check the impedance measured by the relay with 35 volts potential restraint. Apply 5 volts restraint and adjust the balance weight on the beam until the beam just trips with 1/7 of the current required to trip with 35 volts restraint.

The stationary contacts should be adjusted to give .015 inch clearance between them and the silver bridge on the beam when the beam is in the reset position. The bridge would be made to touch both contacts simultaneously, and deflect the contact springs at least .010 inch before the beam strikes the bronze stop on the core screw.

A good method of adjusting the contacts consists in first adjusting one of the contacts to the correct gap and then applying just sufficient current to trip the beam against a restraint of about 5 volts. While the beam is in this position, that is, lightly pressing on the one contact, the other contact should be slowly adjusted upward by means of the set screw until it just touches the silver bridge

## TYPE HZ IMPEDANCE RELAY

without lifting it off the other contact. The trip circuit should be energized so that the lighting of a lamp or the tripping of an auxiliary relay will show when both contacts are made.

### SECOND IMPEDANCE UNIT

Refer again to Fig. 1. Adjust the stop screw on the moving beam for .020 inches clearance between the rear of the beam and the voltage iron. With the beam in this position, adjust the vertical gap for .010 inches clearance between the adjustable iron and the beam, also adjust for .020 inches clearance between the front of the beam and the stop on the upper core screw.

The stationary contact should be adjusted for an .020 inch gap when the beam is in the reset position. When the beam is in the operated position there should be a .015 inch deflection of the moving contact. The spring that carries the moving contact should lie flat on the Micarta arm with no initial tension on the contact. The flexible pigtail should be at least 3/32 inches from the end of the stationary contact.

With the connections as shown in the test diagram, Fig. 8, and using any tap and scale setting, check the impedance measured by the relay with 60 volts potential restraint. Apply 10 volts restraint and adjust the balance weight or vibration damper on the second unit until the beam just trips with 1/6 of the current required to trip with the 60 volts restraint.

### THIRD IMPEDANCE UNIT

Mechanical adjustments of the beam and contact are the same as for the second unit except for the vibration damper.

The third impedance unit beam should be balanced by adjusting the balance weight so that in the de-energized condition, the beam will reset, thus leaving its contact open. Do not introduce excessive resetting torque, but only enough to reset the unit.

### CALIBRATION OF IMPEDANCE UNITS

The current required to operate the impedance units against any given voltage is ob-

tained from the equation:

$$TS = \frac{10 E}{I} \quad (3)$$

where T is the current tap and S is the setting of the calibrated core screw, E and I are the voltage and current respectively applied to the relay. Thus, if the setting is T = 20.8, S = 1.2 and the voltage is 30 volts, then the current required at 60° lagging is:

$$I = \frac{10 E}{TS} = \frac{10 \times 30}{20.8 \times 1.2} = 12 \text{ amperes}$$

When checking the calibration, it is essential that the polarity be as given in Fig. 8, otherwise an error will be introduced, particularly for the first unit.

Fig. 5 shows the variation of tripping current for a given voltage as the phase angle between current and voltage is varied. To make sure that the relay is operating at 60° lag and not 240°, the current leads can be reversed and the first unit should operate on a smaller current if the connections were originally correct.

Fig. 4 shows the general shape of the impedance curves for different ohm settings. These curves are obtained by tripping the beam against different voltage for a constant T and S setting and then plotting the ratio E/I in percent calibrating voltage impedance against the voltage. The lower voltage points (5 to 15 volts) are considerably affected by the mechanical balance of the beam, while the higher points are but little influenced.

Accurate time tests on the instantaneous unit and directional unit can be taken with the aid of an oscillograph or high-speed timer. The cycle counter is of use only in timing the synchronous timer and in timing the high-speed unit near the "balance point" where the time may be several cycles.

Fig. 7 shows the time of operation in cycles (data taken on 60 cycles relay) of the first impedance unit for various balance points. By using these curves the operating speed of the HZ element can be determined for any value of current and voltage applied to the unit.

DIRECTIONAL UNIT

The upper bearing screw should be screwed down until there is only three to four thousandths of an inch clearance between it and the shaft, and then securely locked in position with the lock nut. This adjustment can be made best by carefully screwing down the top bearing screw until the double loop fails to turn freely and then backing up 1/8 of a turn. Great care must be taken in making this adjustment to prevent damage to the bearings.

The front contact spring should be positioned in the center of the .020 inch slot of the aluminum guard by means of the small adjusting screw located on the nut plate that holds the spring on the moving element. The travel of the moving contact is limited by the stationary contacts mounted on the molded cover. The contact gap should be adjusted as follows: With the moving contact centered between the studs, close the contact gaps by advancing the two front stationary contacts. Then back off the right-hand stationary contact .035 inch and lock both contacts in place. The complete moving element is limited in travel by two stop screws, located on the molded cover. These should be adjusted so that the moving contact just barely misses the stationary contact stops front and rear respectively when energized in the opening and closing directions with 120 volts and 5.0 amperes at maximum torque. The right-hand stationary contact should just touch the moving contact when energized as above and then should be turned 1/6th of a turn to obtain .005 inch contact follow. Too much follow should be avoided to insure proper coordination. The spring should be adjusted so that the contact closes with approximately 1.0 volt and 5 amperes at maximum torque.

A small lever arm extending to the front on the bottom of the unit and the plugs accessible through the molded cover control the magnetic bias of the electromagnet. The lever should be adjusted so that the unit will operate with 40 amperes and 0.2 volt at the maximum torque angle. Before or after this adjustment, short the voltage coils and check to insure that the contacts do not close on 60 amperes momentarily applied. Raising the right-hand plug under these conditions will produce torque to the right when considering

the front moving contact. The unit can be adjusted to just remain open under these conditions or adjusted to operate with 75 amperes and 0.2 to 0.4 volt at the maximum torque angle.

CONTACTOR SWITCH (SEAL-IN SWITCH) CS

Adjust the stationary core of the switch for clearance between the stationary core and the moving core of .025 inch when the switch is picked up. This can be done by disconnecting the switch, turning it up-side-down and screwing up the core screw until the contact just separates. Then back off the core screws approximately one turn and lock in place. This prevents the moving core from striking and sticking to the stationary core because of residual magnetism. Adjust the contact clearance for 3/32 inch by means of the two small nuts on either side of the Micarta disc. The switch should pick up at 1.0 ampere direct current. Test for sticking after passing 30 amperes direct current through the coil.

CONTACTOR SWITCH CSA

The adjustments are the same as for the seal-in contactor switch "CS" except that the contact clearance should be 1/32 inch. For 125 volt d-c relays, apply 80 volts direct current to Nos. 18 and 19 terminals. Similarly for 250 volt d-c relays, apply 160 volts direct current to Nos. 18 and 19 terminals. See that the switch picks up and closes its contacts positively when the contact of the third impedance unit is made. The switch coil is continuously rated.

AUXILIARY CONTACTOR SWITCH CSI

The adjustments are the same as for auxiliary switch CSA. The switch should pick up at 40 volts direct current for a 125-volt relay or 80 volts direct current for the 250 volt relay. This contactor switch and series resistor are also intermittently rated. The voltage should be applied across terminals 10 and 14 and 16 with a jumper clipped between the middle and right hand contacts of contactor switch CSA. The circuit will then be completed when the directional unit contact is manually closed. The switch should drop out immediately when the directional contact is opened. The coil resistance is approximately 1150 ohms.

## TYPE HZ IMPEDANCE RELAY

### OPERATION INDICATOR

Adjust the indicator to operate at 1.0 ampere direct current gradually applied. Test for sticking after passing 30 amperes direct current through the coil.

### SYNCHRONOUS TIMER

When testing the synchronous timer, complete the transformer circuit by a jumper around the contacts on the contactor switch CS-1 rather than operating the switch on direct current. Test the motor with 3.5 amperes through the current circuit of the relay. This is the minimum current at which it will run in synchronism.

### TIMING TESTS

The d-c trip circuit should be loaded with a resistor to draw approximately 5 amperes and an auxiliary relay should be used to operate the timer circuit if time tests are to be taken. There is a slight vibration of the beam and contacts because of the pulsating pull on the current side of the instantaneous unit. This vibration may prevent positive stopping of the timing device unless an auxiliary type MG relay is used. The loading resistor will cause the contactor switch to seal-in and simulates the actual service condition when a circuit breaker is to be tripped. This type of circuit is also necessary when timing T-2 or T-3.

**CAUTION** Make certain that the stops on the rear and front of each beam are absolutely clean otherwise the impedance at which the beam trips may be affected, particularly at low voltages. The stop can be easily cleaned by drawing a piece of clean white paper between the beam and the stop while the beam is firmly pressed down.

### RENEWAL PARTS

Repair work can be done most satisfactorily at the factory. However, interchangeable parts can be furnished to the customers who are equipped for doing repair work. When ordering parts, always give the complete name-plate data.

### ENERGY REQUIREMENTS

Typical burden data of the various circuits

are as follows:

#### Potential Circuits At 120 Volts, 60 Cycles

Circuit	V. A.	P. F. Angle
Impedance Units (all in parallel)	4.6	11° lag
Directional Units	6.6	19° lead

#### Potential Circuits at 120 Volts, 50 Cycles

Circuit	V. A.	P. F. Angle
Impedance Units (all in parallel)	3.7	10° lead
Directional Units	6.4	9° lead

#### Current Circuits at 60 Cycles †

Circuit	Amps.	V. A.	P. F. Angle
First Unit T=45, S=1.4	8.66	9.7	37°
Second Unit T=45, S=2.2			
First Unit T=13.5, S=0.8	8.66	2.75	8°
Second Unit T=13.5, S=1.4			
Directional Unit Third Unit T=90, S=2.2 Timer & Aux, C. T. (aux switch open)	5	15.3	58.5°
Directional Unit Third Unit T=90, S=2.2 Timer & Aux, C. T. (aux switch closed)			
Directional Unit Third Unit T=40, S=1.4 Timer and Aux, C. T. (aux switch open)	5	11.5	57°
Aux. star-delta C. T. S#879127 (Ref. I. L. 41-486) 5Y/8.66 Δ			
Aux. star-delta C. T. S#879127 (Ref. I. L. 41-486) 5Y/8.66 Δ	5	3.5	10°

†The burdens of the current circuits, at 50 cycles, are slightly less than the above values.

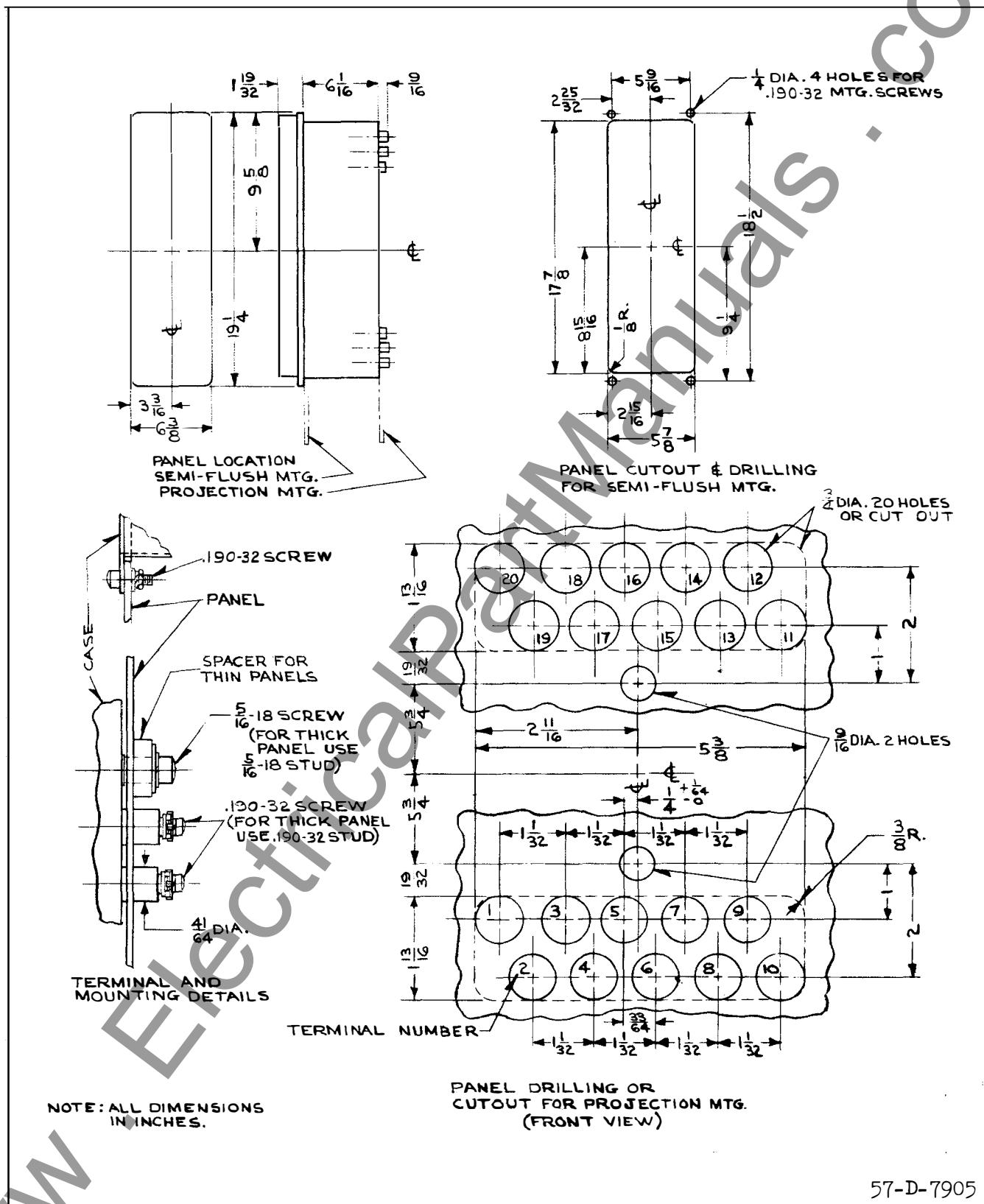


Fig. 10 Outline and Drilling Plan of the Type HZ Relay in the Type FT42 Case.



**WESTINGHOUSE ELECTRIC CORPORATION**  
**RELAY-INSTRUMENT DIVISION**

**NEWARK, N. J.**

Printed in U.S.A.