

SG Auxiliary Relay INSTRUCTIONS

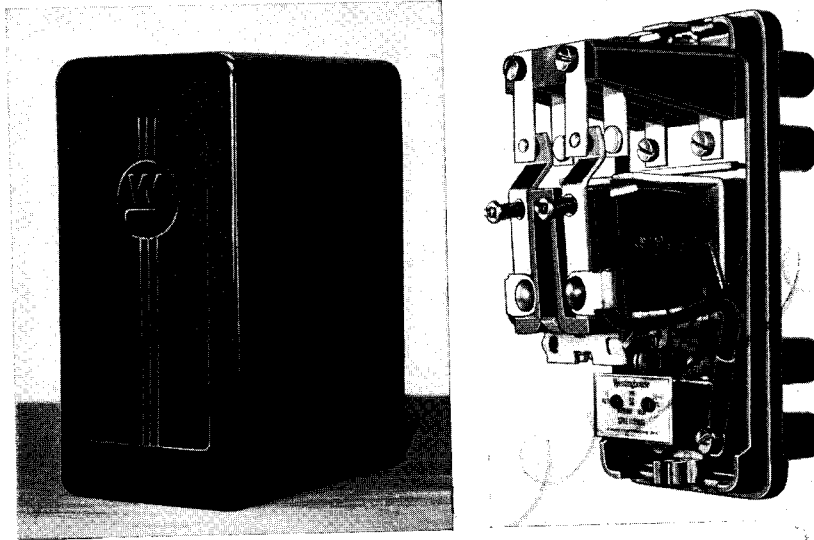


FIG. 1—CLOSED TYPE SG RELAY SHOWING SOLID MOLDED COVER, RELAY WITH COVER OFF. THIS RELAY HAS TWO-MAKE AND TWO-BREAK CONTACTS.

General

The type SG relay is made small and sturdy for auxiliary service. It is supplied with a molded cover and base. The complete relay is shown in Figure 1.

Construction

The type SG relay consists essentially of a clapper type electromagnet and a set of contacts. The clapper carries two moving contacts. For each of the moving contacts, two stationary contacts are provided, one set which makes with the moving contact when the magnet coil is energized and one set which makes when the magnet coil is deenergized. The relay, therefore, has two make and two break contacts with a moving contact being common to each pair of front and back stationary contacts.

The magnetic circuit is fastened to the molded base by two screws while the coil and core are held securely in place by one screw. The armature is held in the deenergized position by gravity and a spring.

The moving contact fingers have a contact surface on both sides and are so mounted on the armature block that motion in either direction compresses a spring. This permits sufficient contact follow to be obtained for both the make and break contacts.

The wiring diagram is shown in Fig. 2.

Operation

The armature to which the moving contacts are fastened is attracted to the core when the relay coil is energized and closes the make contacts. When the coil is deenergized, gravity and a spring make the armature fall away from the core and close the break contacts.

Maintenance

The only maintenance required will be to occasionally dress the contact surfaces with a very fine file to remove the small amount of pitting which may occur due to burning of the contacts.

Renewal Parts

Normally no renewal parts will be required. In case parts are desired, however, the 115 volt, 60 cycle coil may be

ordered as Style No. 1008517. Any other parts should be ordered by giving a description of the part, and including the style number of the relay and the complete nameplate rating of the transformer on which the relay was supplied.

Ordering Information

Renewal parts may be ordered from the nearest Westinghouse Electric and Manufacturing Co. Office or from the Sharon, Pa., Works.

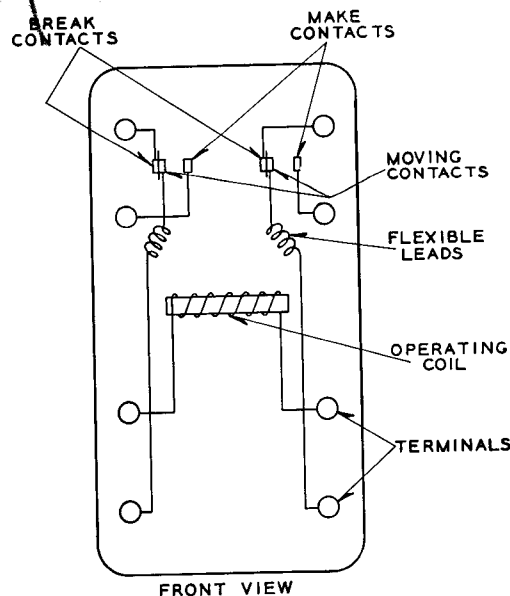


FIG. 2—INTERNAL CONNECTIONS FOR CLOSED TYPE SG RELAY.

Westinghouse Electric & Manufacturing Company
Sharon, Pa.

Westinghouse Press
Printed in U.S.A.

EVERY HOUSE NEEDS WESTINGHOUSE