

# AC MAGNETIC RELAYS FOR CAPACITOR MOTOR STARTING POTENTIAL TYPE

CLASS  
8505

Class 8505 Magnetic Relays are for replacement purposes or existing applications only, and are not for new applications. When ordering devices, the **specification number** from the relay nameplate

must be included along with the class and type number and voltage of the relay.

## 25 AMPERE RELAY

110-600 VOLTS		25-60 HERTZ		
Description	Continuous Ampere Rating	Open Type	Order Quantity	Price Each
Single Pole—Single Throw Normally Closed	25	AO-1	1-10	\$210.
			11-24	180.
			25 and Up	140.
Single Pole—Double Throw	25	BO-1	1-10	230.
			11-24	210.
			25 and Up	150.

### ORDERING INFORMATION REQUIRED

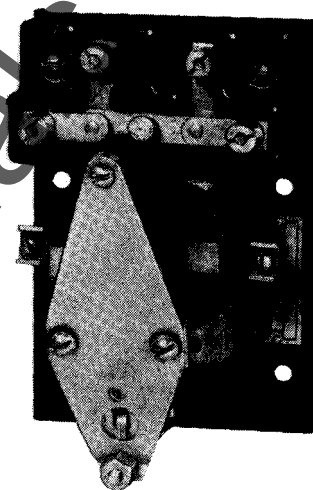
- 1 — Specify class and type number and voltage of relay.
- 2 — Give specification number from nameplate.

## 15 AMPERE RELAY

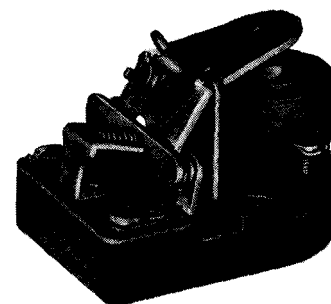
LINE VOLTAGE 115-230			25-60 HERTZ			
Description	Maximum Ratings			Open Type	Order Quantity	Price Each
	Volts	HP	Start Winding Current (Amps)			
Single Pole, Single Throw Normally Closed	115	3	50	CO-2	1-4	\$90.
	230	5	35		5 and Up	72.

### ORDERING INFORMATION REQUIRED

- 1 — Specify class and type number and voltage of relay.
- 2 — Give specification number from nameplate.

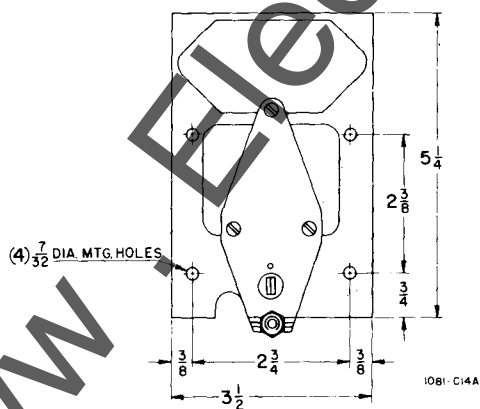


Type BO-1 single pole, double throw capacitor motor relay.

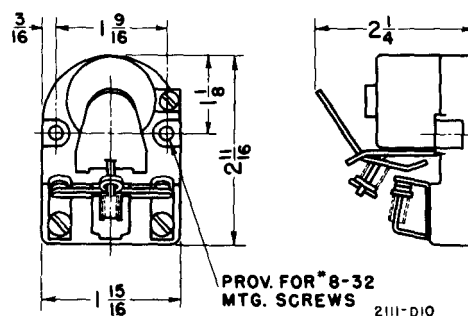
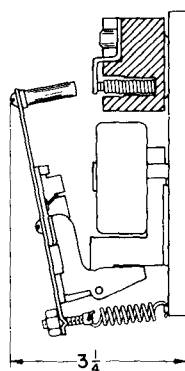


Type CO-2

### APPROXIMATE DIMENSIONS



Types AO-1, BO-1



Type CO-2