

**SUPERSEDES:**

Class 9066  
Page 101  
February, 1968



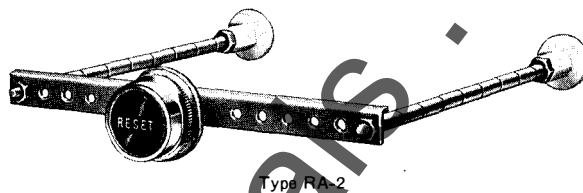
CLASS	<b>9066</b>
PAGE	<b>1</b>
<b>OCTOBER, 1968</b>	

## EXTERNAL RESET MECHANISMS FOR OVERLOAD RELAYS

Type RA kits provide a convenient external means for re-setting overload relays mounted in control enclosures of almost any depth. Designed for use on NEMA 1, 5 or 12 enclosures, they can be used with any Square D open type magnetic starter or Class 9065 overload relay. Heavy duty construction, unusual flexibility, and a high quality appearance are featured. All kits are individually packaged for easy stocking, and include complete installation instructions.

Only a single mounting hole is required in the enclosure door. Each kit contains one or more threaded reset rods, grooved at intervals of  $\frac{3}{4}$ " so they can be cut to the approximate length required without thread damage. Final adjustment is easily made after installation by rotating a plunger and tightening the lock nut. Mechanisms with more than one reset rod include a steel cross bar with mounting holes located at  $\frac{1}{2}$ " intervals, providing a choice of rod locations to suit any application.

•Type RB kits make it possible to add external reset mechanisms to NEMA 12, Type S combination starters in the field. They may also be used to replace external reset mechanisms on NEMA 1 and 4, Type S combination starters.



### NEMA 1, 5, 12 RESET MECHANISMS\*

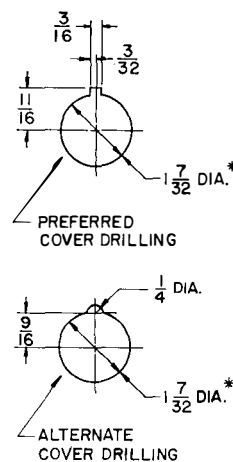
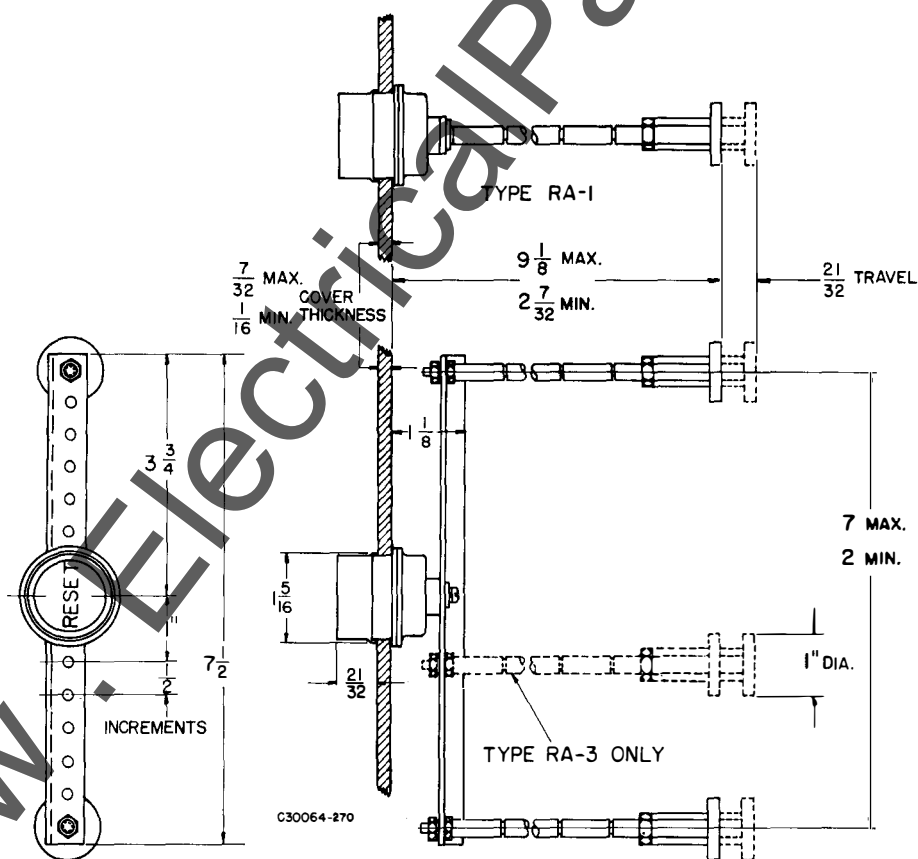
Description	Class 9066 Type	Price
With 1 Rod	RA-1	\$4.
With 2 Rods	RA-2	5.
With 3 Rods	RA-3	6.

\*For NEMA 4 applications use the Type RA kit plus a Class 9001 Type KU-1 protective cap.

### •RESET KITS FOR CLASS 8538 & 8539 TYPE SBA, SCA, SDA\*\*

For Use With	Class 9066 Type	Price
Size 0 & 1	RB-1	\$3.
Size 2	RB-2	3.

\*\*May also be used on Type S combination starters for replacement purposes on NEMA 1, NEMA 12, and when used in conjunction with a Class 9001 Type KU-1 protective cap on NEMA 4 enclosures.



\* UNITS ALSO MOUNT IN  
 $1 \frac{13}{64}$  DIA. HOLE

Type RA-2 & RA-3

**SQUARE D COMPANY**

Prices subject to change without notice.

•Added since previous issue

**SCHEDULE DS-1 DISCOUNTS**