

Hitch-N-Post®

Metered Pedestal/Overhead Power Outlet Panels

CONTENTS

Description	Class	Pages
Application Data	4111	2-4
Dimensions	4111	4



SQUARE D

Hitch-N-Post®

METERED PEDESTAL/OVERHEAD POWER OUTLET PANELS

APPLICATION DATA

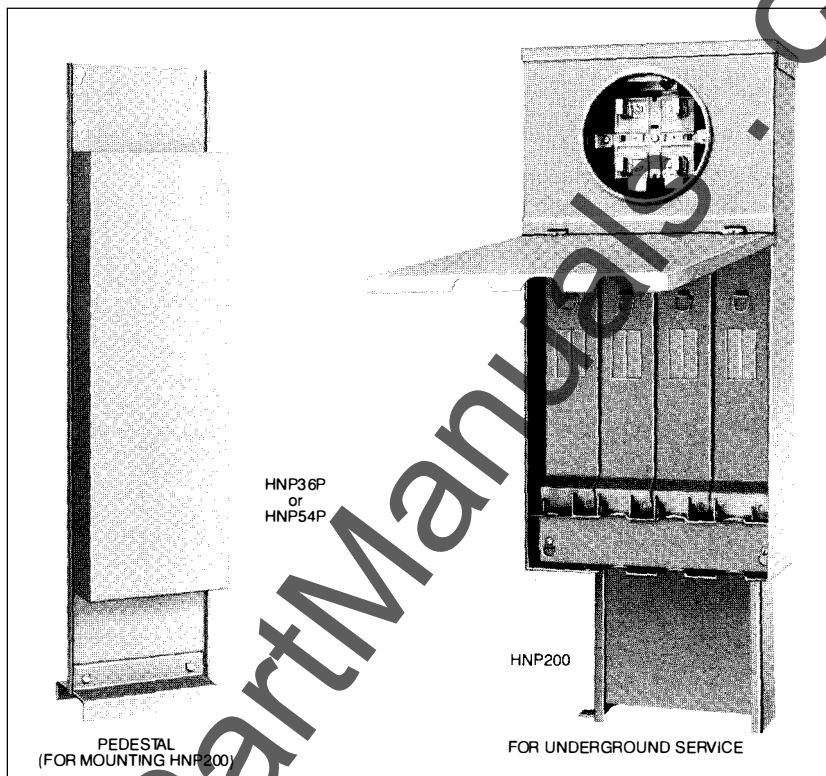
NOVEMBER, 1992

UL LISTED AS SUITABLE FOR USE ONLY AS MOBILE HOME OR TEMPORARY SITE SERVICE EQUIPMENT



FOR OVERHEAD SERVICE

HNP200RB with
field installed
plug-on units
HNP320RGFI,
HNP2200CB,
and HNP450RCB



PEDESTAL
(FOR MOUNTING HNP200)

HNP200

FOR UNDERGROUND SERVICE

Type

Combination main lugs meter socket and power outlet panel specifically designed either for use as mobile home service equipment or for use as temporary site service equipment. Provides for individual metering at the mobile home site and electric service to the mobile home. Each mobile home electrical service may be energized from the power outlet panel by a direct wired main breaker or by a mobile home power supply cord. Underwriters Laboratories listed under File E-53303, Volume I as suitable for use only as mobile home or temporary site service equipment.

Ratings

Mains Rating: 200A., 1Ø3W 120/240 volt ac maximum.
10,000 RMS symmetrical amperes short circuit current rating.

Construction

NEMA Type 3R rainproof construction. Finish is of gray baked enamel, electrodeposited over cleaned phosphatized steel.

Underground (HNP200): Main lugs only for bottom — loop-feed application accepts (2) #6 AWG-250 kcmil Al/Cu feeders per phase and neutral.

Pedestal (For Underground Service): HNP36P is used for centerline of meter socket located 36 inches above grade line or HNP54P is used for centerline of meter socket located 54 inches above grade line.

Overhead (HNP200RB): Top-feed only, cannot be pedestal mounted. Accepts (1) #6 AWG-300 kcmil feeder per phase and neutral.

Power outlet cover has provisions for padlock.

Meter Socket

Four jaw non-circuit closing is standard. Automatic and manual circuit closing kit available for field installation. Furnished with snap type aluminum sealing ring.

Power Outlet Panel

Completely bussed interior with rigidly formed plated bussing. All electrical connections secured by conical spring washers. Interior accommodates field installed branch plug-on units.

Branch Plug-On Units

QO® and Q2 type circuit breakers are used for the service entrance main for direct wired mobile homes. Circuit breaker and receptacle combination units are used for power supply cord connected mobile homes. Also, a 20A. 120V. receptacle with a QWIK-GARD® circuit breaker ground fault circuit interrupter plug-on unit is available.

For Underground Service	For Overhead Service
<ol style="list-style-type: none"> 1. Use HNP200 2. Use HNP36P or HNP54P 3. Use Branch Plug-On Units and Accessories 	<ol style="list-style-type: none"> 1. Use HNP200RB 2. Use Type "B" Bolt-On Hub 3. Use Branch Plug-On Units and Accessories



Hitch-N-Post®

METERED PEDESTAL/OVERHEAD POWER OUTLET PANELS

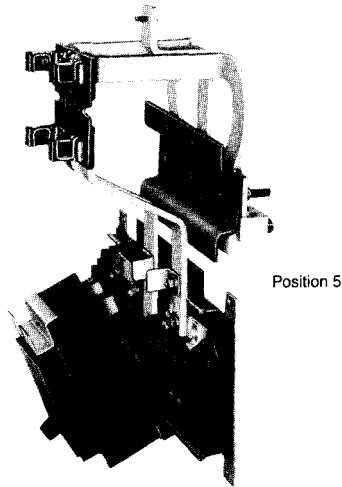
APPLICATION DATA

CLASS
4111

BRANCH PLUG-ON UNIT

Type

Branch plug-on units are designed to meet the changing requirements of mobile home parks. Each unit plugs on to various positions in the power outlet panel.



Description

When 150-200A. HNP...CB breaker units are mounted as shown in position 5 (see wiring diagram—page 4), other units cannot be mounted in positions 2 and 3. These breakers are the service disconnect for the mobilehome. These breakers DO NOT disconnect the power to the meter socket.

Branch plug-on units are easily interchanged for needed versatility.

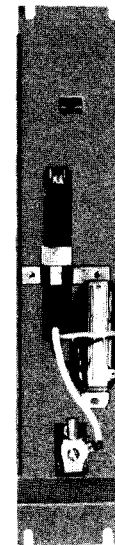
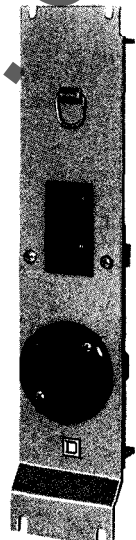
BRANCH PLUG-ON UNITS

Mount in Position ■	Catalog Number	Ampere Rating	Circuit Breaker (Included)	Receptacle (Included)	★
1, 2, 3 or 4	HNP320RGFI◆	20A.	1-Pole GFI	3W duplex NEMA 5-20R	①
2, 3 or 4	HNP330RCB◆	30A.	1-Pole	3W	②
2, 3 or 4	HNP230RCB◆	30A.	2-Pole	3W NEMA 6-30R	③
2, 3 or 4	HNP450RCB◆	50A.	2-Pole	3W NEMA 14-50R	④
2, 3 or 4	HNP250RCB◆†	50A.	2-Pole	3W NEMA 6-50R	⑤
1, 2, 3 or 4	QO115 or QO120●	15-20A	1-Pole
2, 3 or 4	QO250 thru QO260●	50-60A	2-Pole
2, 3 or 4	QO270●	70A	2-Pole
4	QO280 thru QO2100●	80-100A	2-Pole
4	QO2125●	125A	2-Pole
5▲	HNP2150CB◆	150A	2-Pole
5▲	HNP2175CB◆	175A	2-Pole
5▲	HNP2200CB◆	200A	2-Pole

- For location on panel interior see position number on wiring diagram - page 4.
 ▲ When 150-200A. HNP...CB branch plug-on units are mounted in position 5, other units can not be mounted in positions 2 & 3.
 ● Power outlet panel is supplied with closing plates (in all positions) having twistouts to accommodate 1 & 2-pole QO breakers.
 ◆ These plug-on units include required closing plates.
 † Order Only. Not stocked in PDS.
 Order Point: Lexington.
 ★ Receptacle # (see table at right)



HNP2200CB
(closing plate not shown)
FRONT VIEW



HNP2200CB
(closing plate not shown)
REAR VIEW



NEMA	5-20R	6-30R	6-50R	14-50R	-----
Receptacle #	①	③	③	④	⑤
Receptacle Configuration					
Rating	20A. 125V.	30A. 250V.	50A. 250V.	50A. 125/250V.	30A. 125V.

QO and HITCH-N-POST are Registered Trademarks of Square D Company.


SQUARE D

Hitch-N-Post®

METERED PEDESTAL/OVERHEAD POWER OUTLET PANELS

APPLICATION DATA AND DIMENSIONS

NOVEMBER, 1992

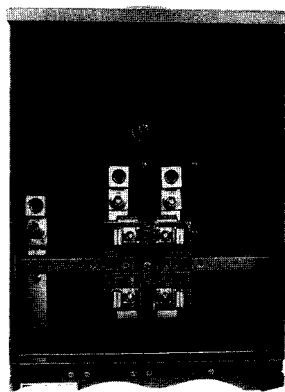
Installation

The back cover of the HNP200 is removable for easy access to the line terminals. This cover may be locked or sealed to restrict access to unmetered conductors.

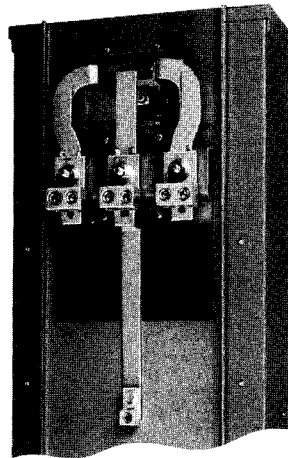
The top endwall of the HNP200RB overhead device has a factory installed B-CAP and accepts type "B" hubs. (See table below). It does not have provisions for loop-feeding.

BOLT-ON HUBS UL LISTED

Conduit Size	¾"	1"	1¼"	1½"	2"	2½"
Hub Catalog No.	B075	B100	B125	B150	B200	B250

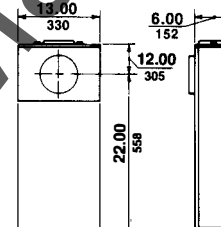
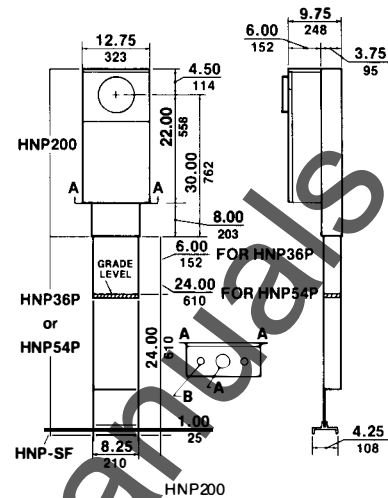


HNP200RB
WITH COVER REMOVED



HNP200
WITH BACK COVER REMOVED

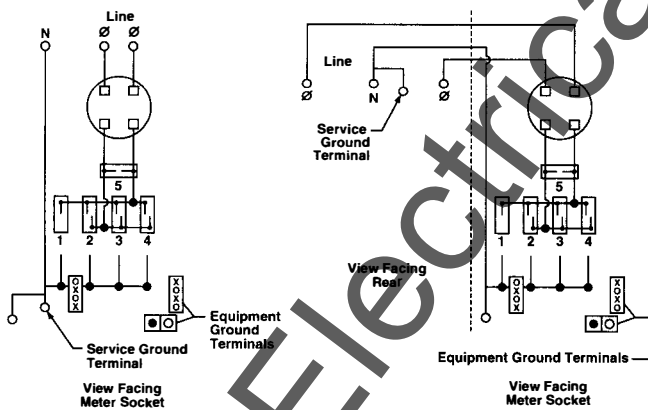
DIMENSIONS



HNP200RB

Dual Dimensions: INCHES
Millimeters

WIRING DIAGRAM



WIRING DIAGRAM HNP200RB
FOR OVERHEAD SERVICE

WIRING DIAGRAM HNP200
FOR UNDERGROUND SERVICE

KNOCKOUT TABLE

Symbol	Conduit Size					
	½"	¾"	1"	1¼"	1½"	2"
A	X	X	X	X	X	X
B	X	X	X			

ACCESSORIES AND REPLACEMENT PARTS

Description	Catalog Number
Stabilizer Foot — Use for unstable soil	HNP-SF
TV & Telephone Terminal Mounting Bracket	HNP-TB
Slider Type Manual Circuit Closing Adaptor	HNP200MCC■
Automatic Circuit Closing Adaptor	ACC200
Filler Plate — To close twist out opening in closing plate	QOFP
Meter Blade Guide	EZM2G■
Fifth Jaw Kit	5J
Blank Closing Plate with Twistouts to Accommodate 1 & 2 Pole QO Breakers	40539-092-50■

■ Order only. Not stocked in PDS. Order Point: Lexington.

