



# INSTRUCTIONS

---

## TIME OVERCURRENT RELAY

TYPE - MODEL 12IAC77S (800 SERIES)

### INTRODUCTION

This instruction book, along with the GEK-34055 instruction book, forms the instructions for the 12IAC77S (800 series) relays.

### DESCRIPTION

The 12IAC77S (800 series) relay consists of three 12IAC77B (800 series) units mounted in an L1 large, single-ended case. This relay is electrically and mechanically interchangeable with the 12IAC77S (forms 1-99) relays.

The time overcurrent unit has an 8 to 1 pick up range with 11 taps. The instantaneous unit has an 8-1 pickup range also. The units of the 12IAC77S (800 series) can be tested per GEK-34055, except refer to figure 1 (internal connection diagram) of this book for the individual unit coil connections and the instantaneous unit range connections.

Figure 2 of this book is the outline and panel drilling diagram for the 12IAC77S (800 series) relays.

*These instructions do not purport to cover all details or variations in equipment nor provide for every possible contingency to be met in connection with installation, operation or maintenance. Should further information be desired or should particular problems arise which are not covered sufficiently for the purchaser's purposes, the matter should be referred to the General Electric Company.*

*To the extent required the products described herein meet applicable ANSI, IEEE and NEMA standards; but no such assurance is given with respect to local codes and ordinances because they vary greatly.*

NOTE: INST. UNITS SHOWN CONNECTED FOR LOW PICK-UP RANGE. FOR HI PICK-UP RANGE, CONNECT 'A' TO TERM. 6A & 'D' TO TERM. 5. SAME CONNS., WITH CORRESPONDING TERM. NOS., FOR MIDDLE & LOWER UNITS.

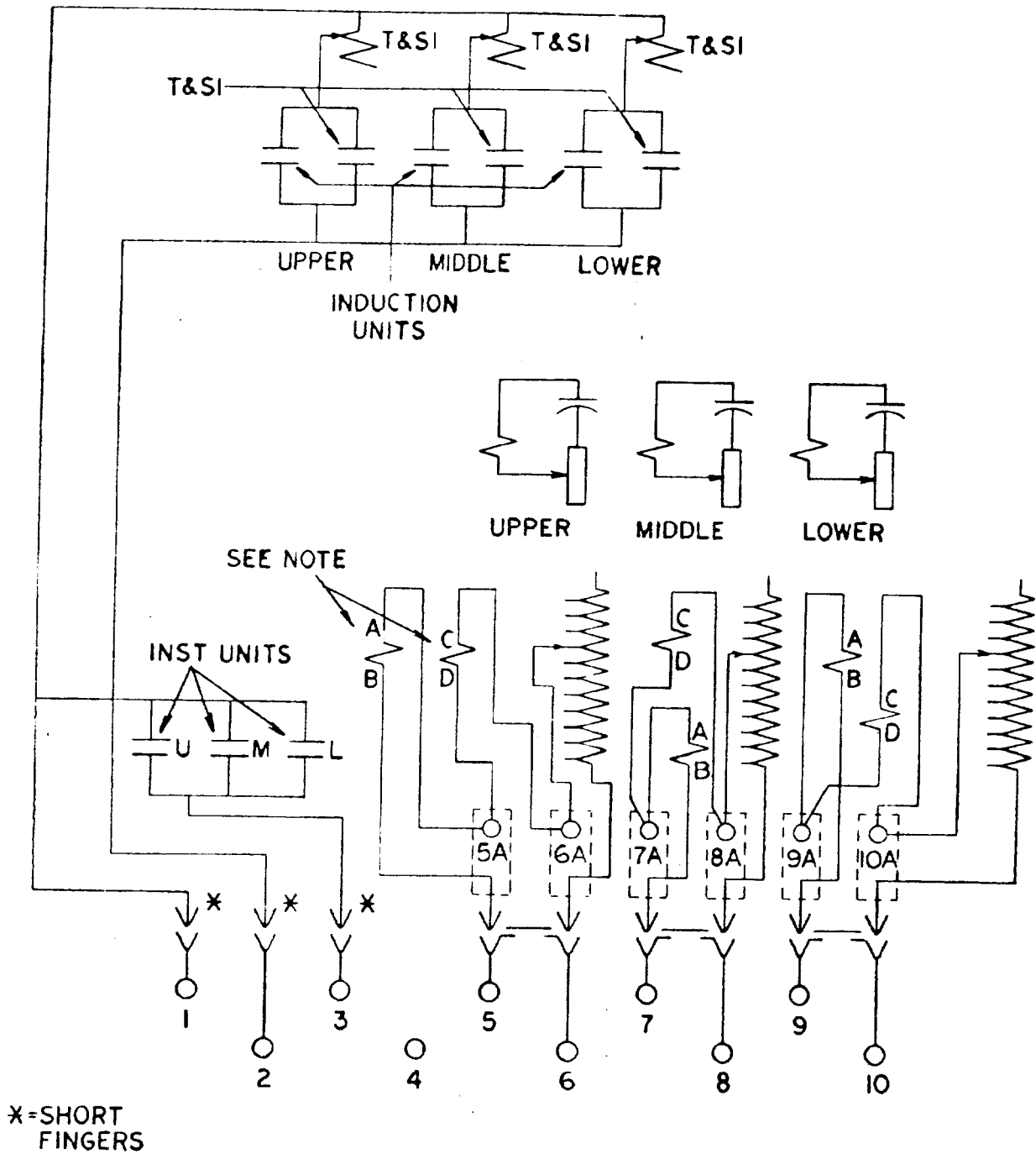
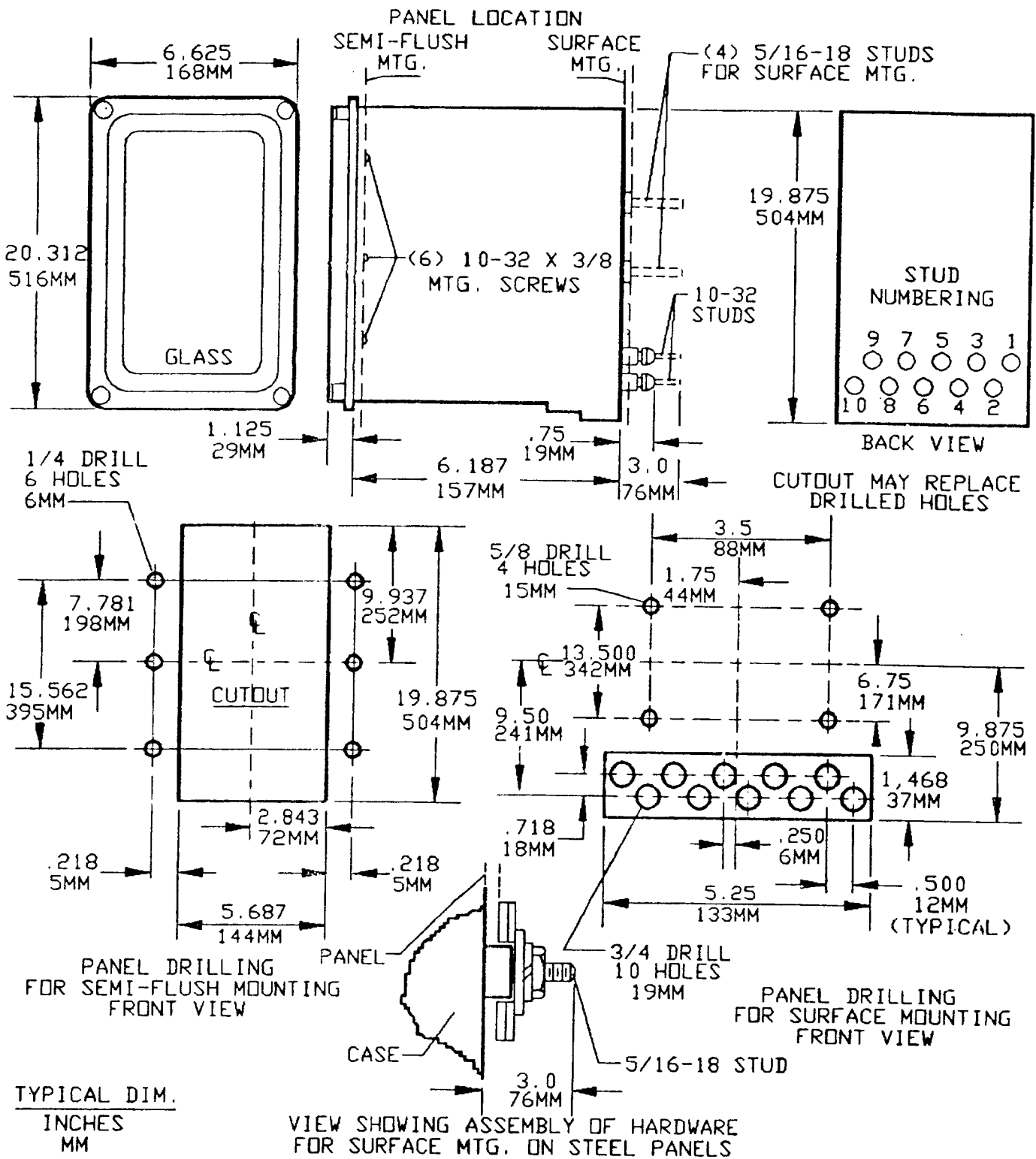


Figure 1 (0246A6843) Internal Connection Diagram for the 12IAC77S (800 Series) Relay



\*Figure 2 (K-6209275 [5]) Outline and Panel Drilling Dimensions for the IAC77S Relay

\* Indicates revision



---

***GE Power Management***

215 Anderson Avenue  
Markham, Ontario  
Canada L6E 1B3  
Tel: (905) 294-6222  
Fax: (905) 201-2098  
[www.ge.com/indsys/pm](http://www.ge.com/indsys/pm)