

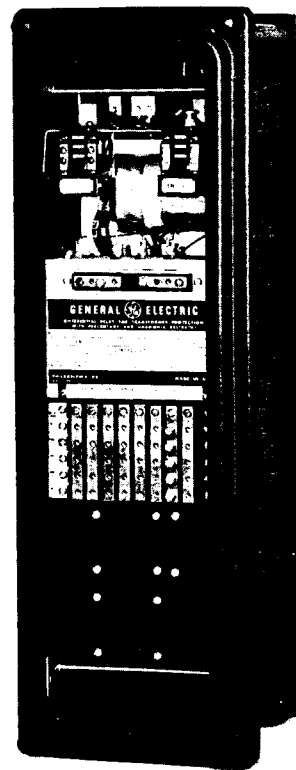


## INSTRUCTIONS

GEK-1265A  
Supersedes GEK-1265

# TRANSFORMER DIFFERENTIAL RELAY WITH PERCENTAGE AND HARMONIC RESTRAINT

TYPE BDD18B



GENERAL  ELECTRIC

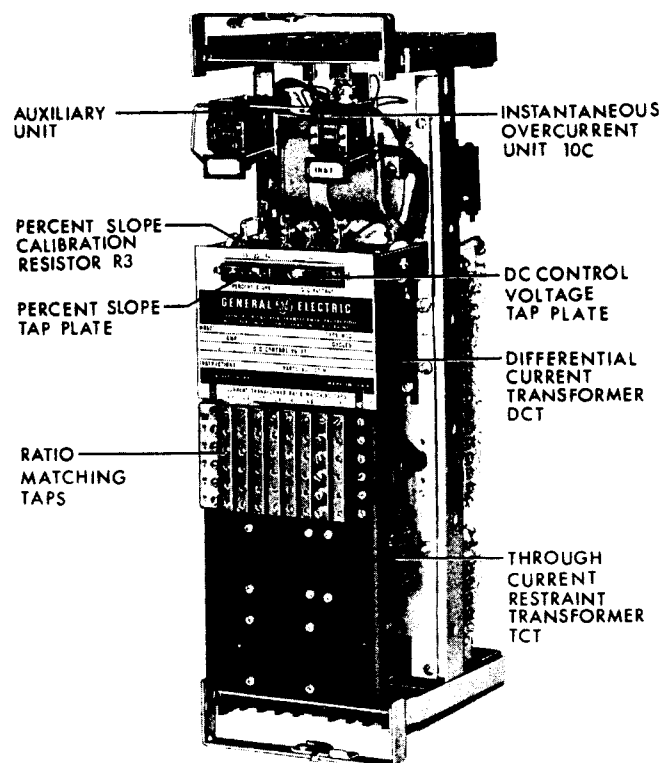


Fig. 1A (8036368) Type BDD18B Relay, Cradle Removed From Case, Front View

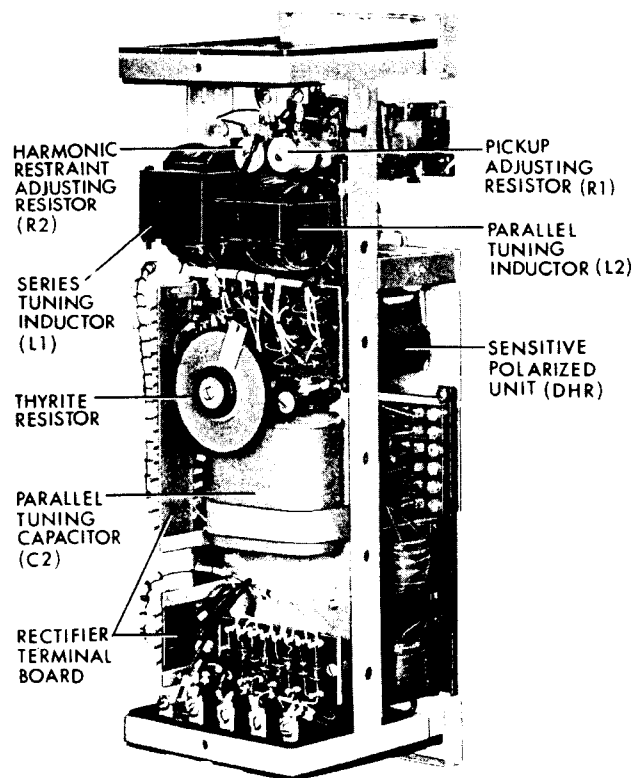


Fig. 1B (8036366) Type BDD18B Relay, Cradle Removed From Case, Rear View

# **TRANSFORMER DIFFERENTIAL RELAY WITH PERCENTAGE AND HARMONIC RESTRAINT**

## **TYPE BDD**

### **INTRODUCTION**

These instructions are a supplement to Instruction Book GEH-2057, which is included in this book. The combination of the two form instructions for the type BDD18B relay.

### **DESCRIPTION**

The Type BDD18B relay is similar to the BDD16B except the former has five through current restraint windings and is mounted in the L2 (large, double ended) case.

Figure 1 shows the location of the components in the BDD18B relay.

Figure 2 shows the internal connection diagram for the BDD18B relay.

Figure 3 shows the typical wiring diagram for the BDD18B relay.

Figure 4 shows the test circuit for the BDD18B relay.

Figure 5 shows the outline and panel drilling for the BDD18B relay.

*These instructions do not purport to cover all details or variations in equipment nor to provide for every possible contingency to be met in connection with installation, operation or maintenance. Should further information be desired or should particular problems arise which are not covered sufficiently for the purchaser's purposes, the matter should be referred to the General Electric Company.*

*To the extent required the products described herein meet applicable ANSI, IEEE and NEMA standards; but no such assurance is given with respect to local codes and ordinances because they vary greatly.*

# GEK-1265 Transformer Differential Relay Type BDD

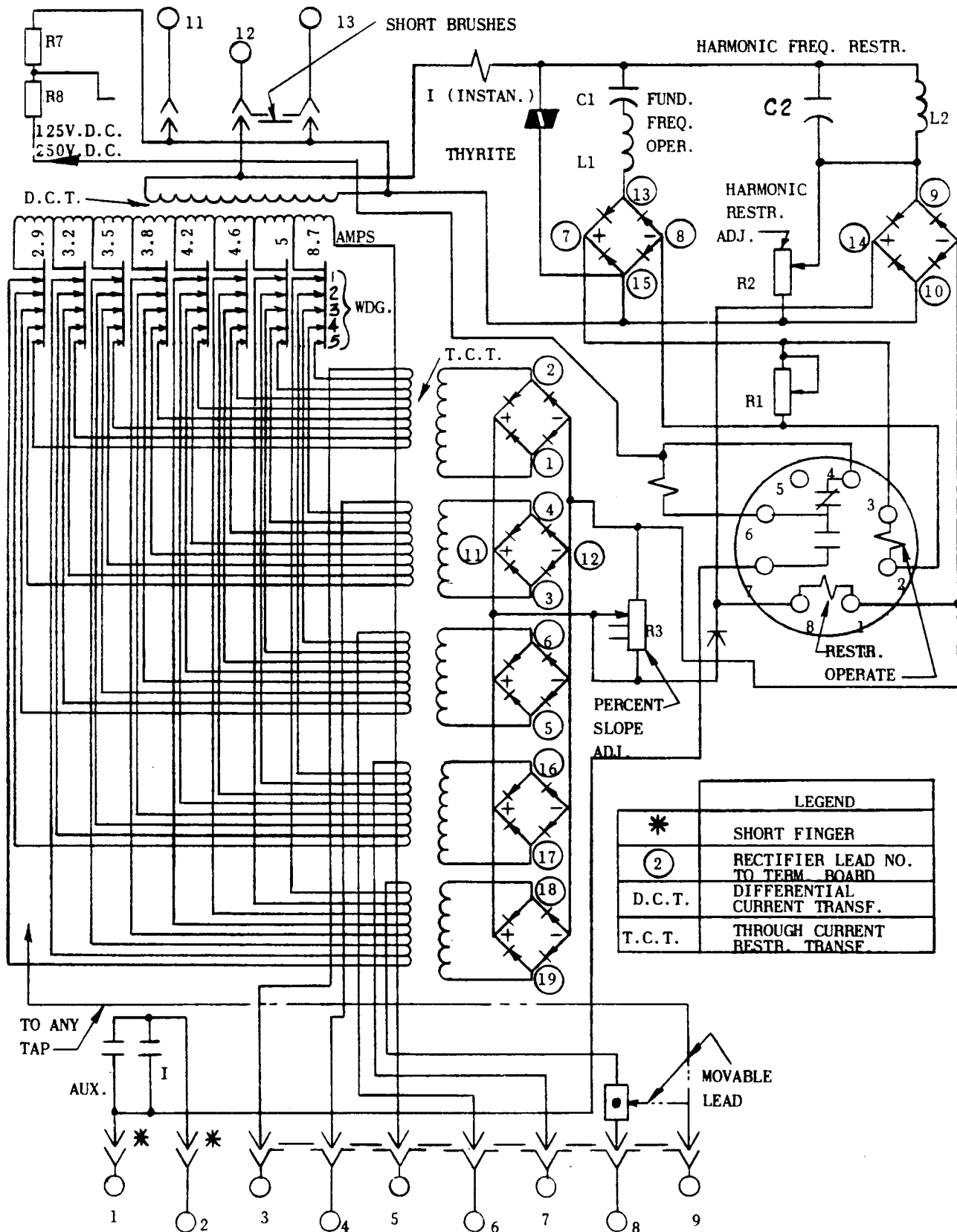


Fig. 2 (0178A9102-0) Internal Connections For Relay Type BDD18B

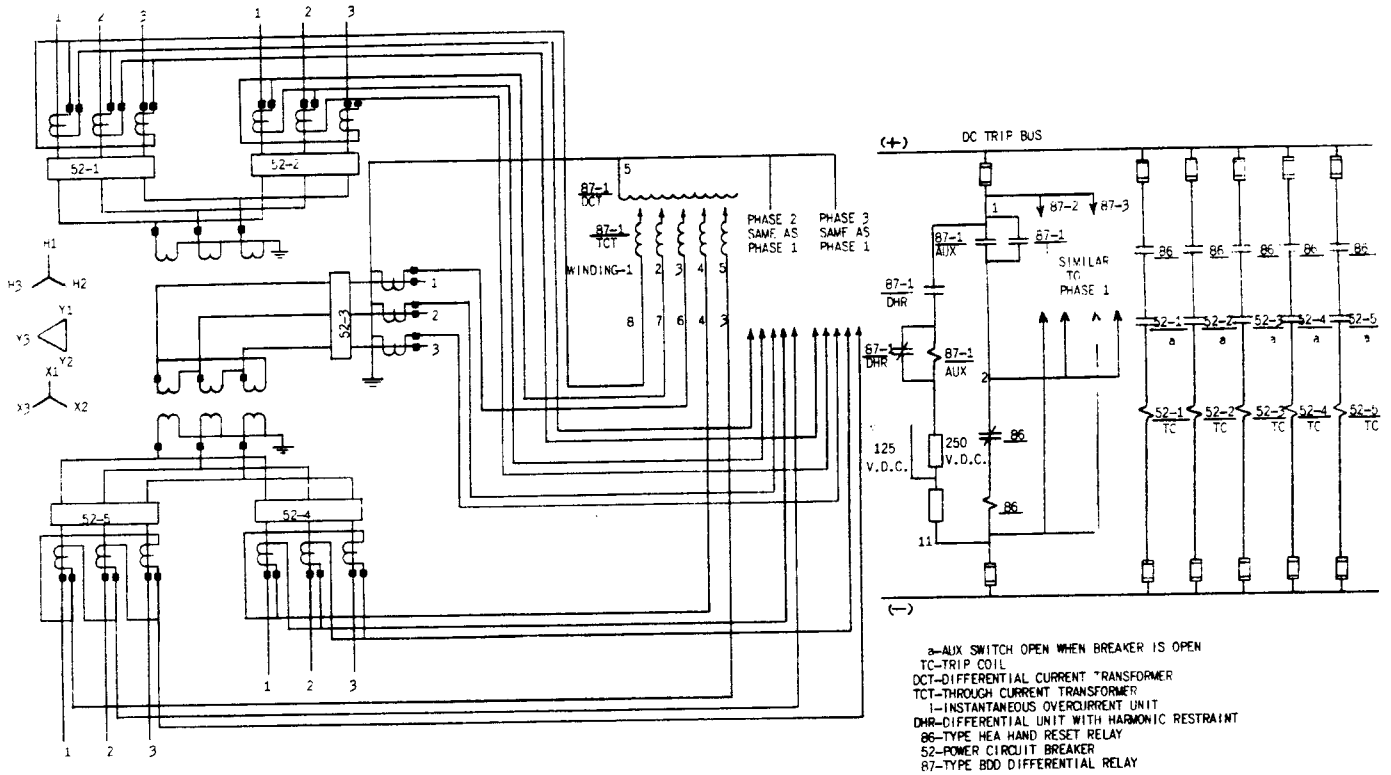


Fig. 3 (0116B6963-0) Elementary Diagram For BDD18B Relay For Five Circuit Transformer Protection

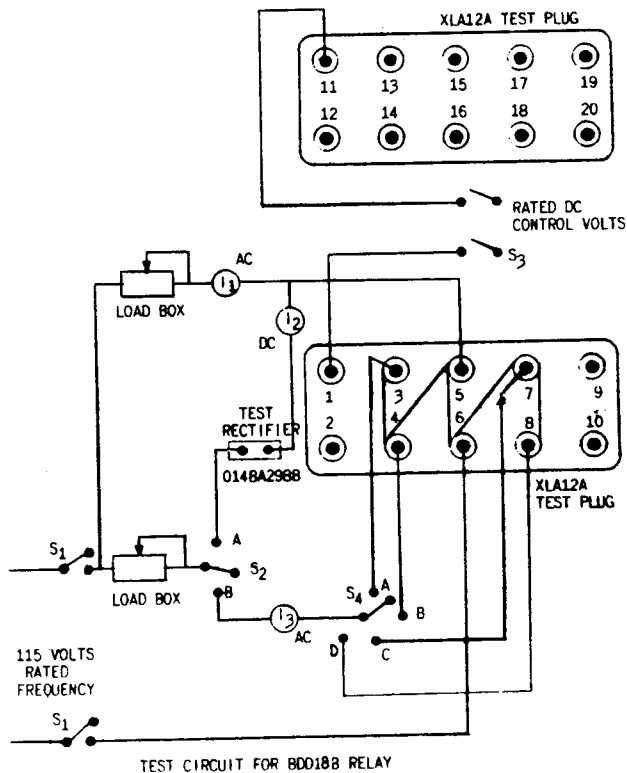


Fig. 4 (418A771-0 sh 5) Test Connections

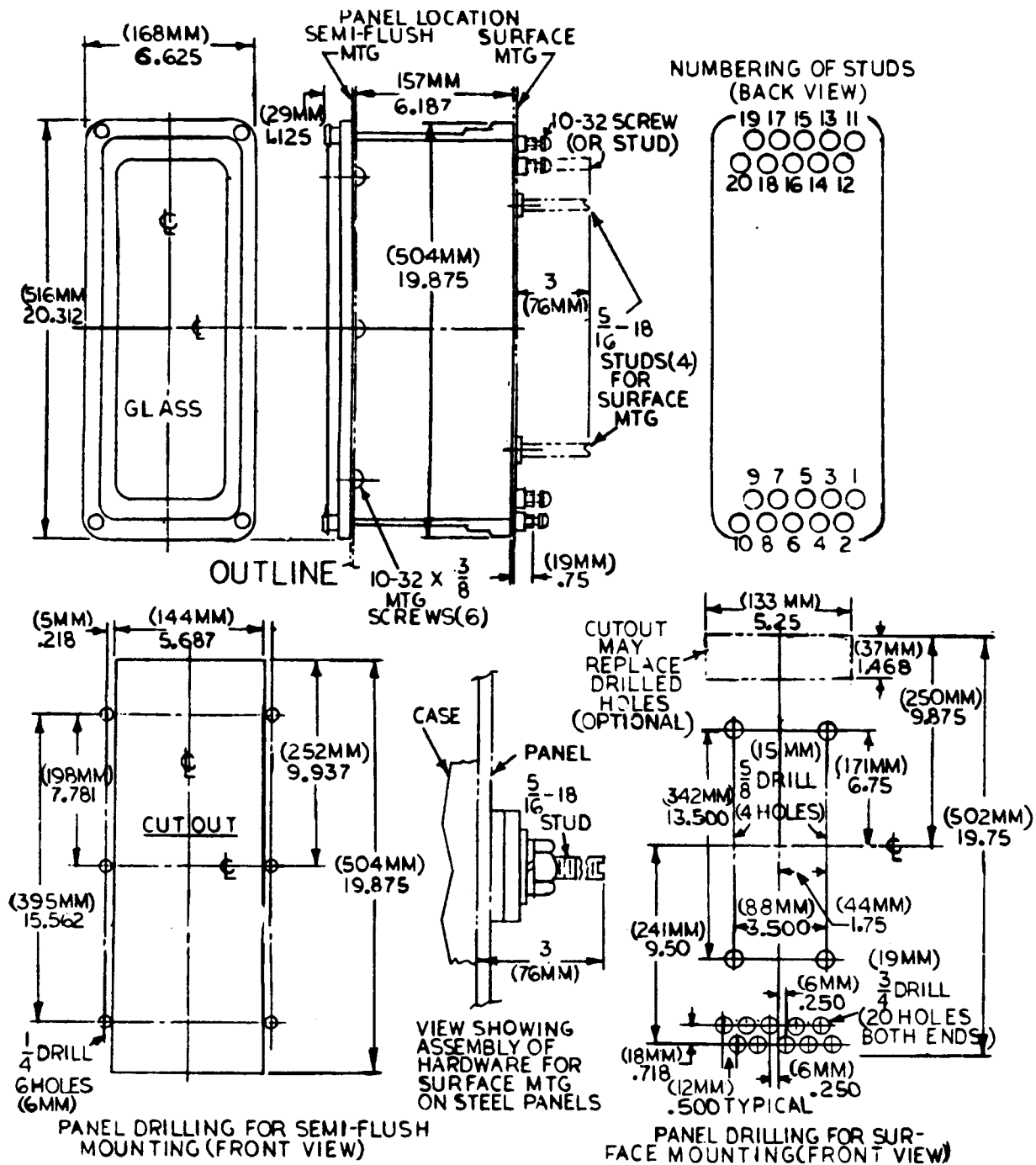


FIG. 5 (6209276-3) OUTLINE AND PANEL DRILLING DIMENSIONS FOR RELAY TYPE BDD18B

## NOTES

**GENERAL ELECTRIC COMPANY  
POWER SYSTEMS MANAGEMENT BUSINESS DEPT.  
MALVERN, PA. 19355**







## INSTRUCTIONS

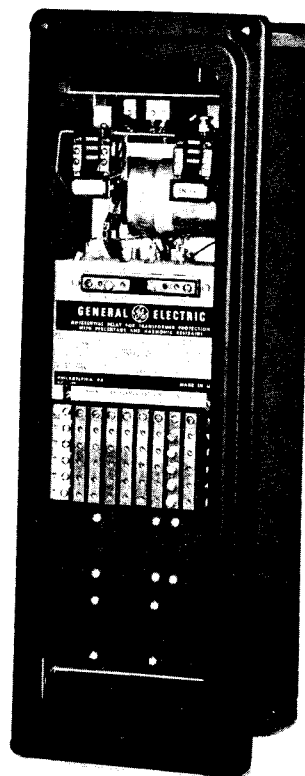
GEK-1265B

GEH-2057

INSERT

# TRANSFORMER DIFFERENTIAL RELAY WITH PERCENTAGE AND HARMONIC RESTRAINT

TYPE BDD18B



GENERAL  ELECTRIC

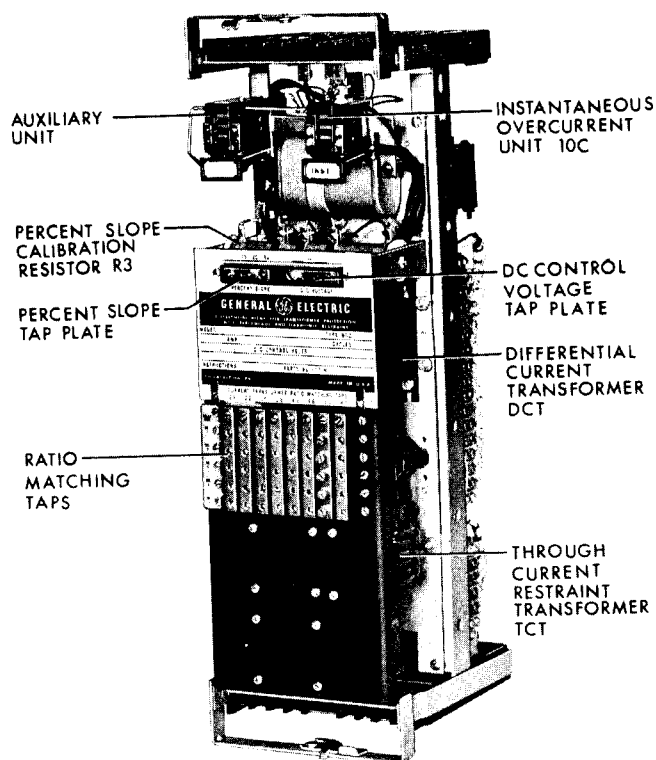


Fig. 1A (8036368) Type BDD18B Relay, Cradle Removed From Case, Front View

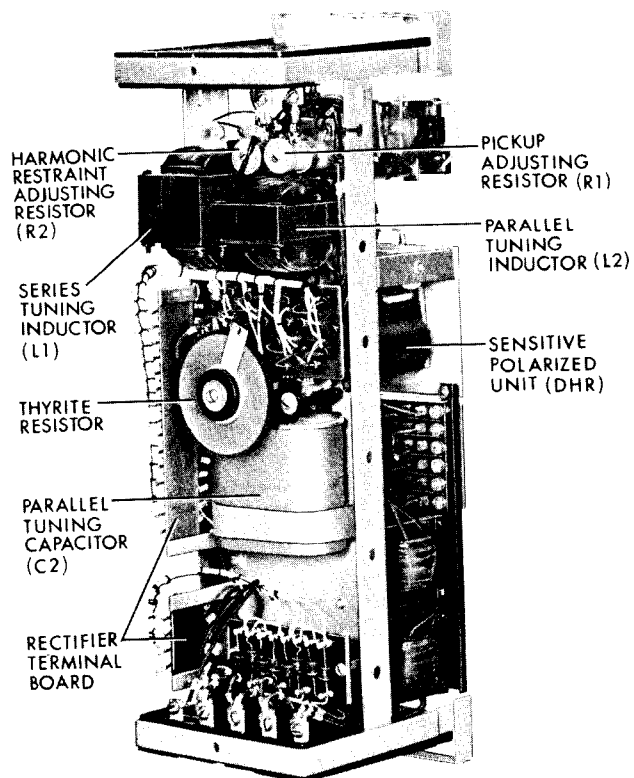


Fig. 1B (8036366) Type BDD18B Relay, Cradle Removed From Case, Rear View

# TRANSFORMER DIFFERENTIAL RELAY WITH PERCENTAGE AND HARMONIC RESTRAINT

## TYPE BDD

### INTRODUCTION

These instructions are a supplement to Instruction Book GEH-2057, which is included in this book. The combination of the two form instructions for the type BDD18B relay.

### DESCRIPTION

The Type BDD18B relay is similar to the BDD16B except the former has five through current restraint windings and is mounted in the L2 (large, double ended) case.

Figure 1 shows the location of the components in the BDD18B relay.

Figure 2 shows the internal connection diagram for the BDD18B relay.

Figure 3 shows the typical wiring diagram for the BDD18B relay.

Figure 4 shows the test circuit for the BDD18B relay.

Figure 5 shows the outline and panel drilling for the BDD18B relay.

*These instructions do not purport to cover all details or variations in equipment nor to provide for every possible contingency to be met in connection with installation, operation or maintenance. Should further information be desired or should particular problems arise which are not covered sufficiently for the purchaser's purposes, the matter should be referred to the General Electric Company.*

*To the extent required the products described herein meet applicable ANSI, IEEE and NEMA standards; but no such assurance is given with respect to local codes and ordinances because they vary greatly.*

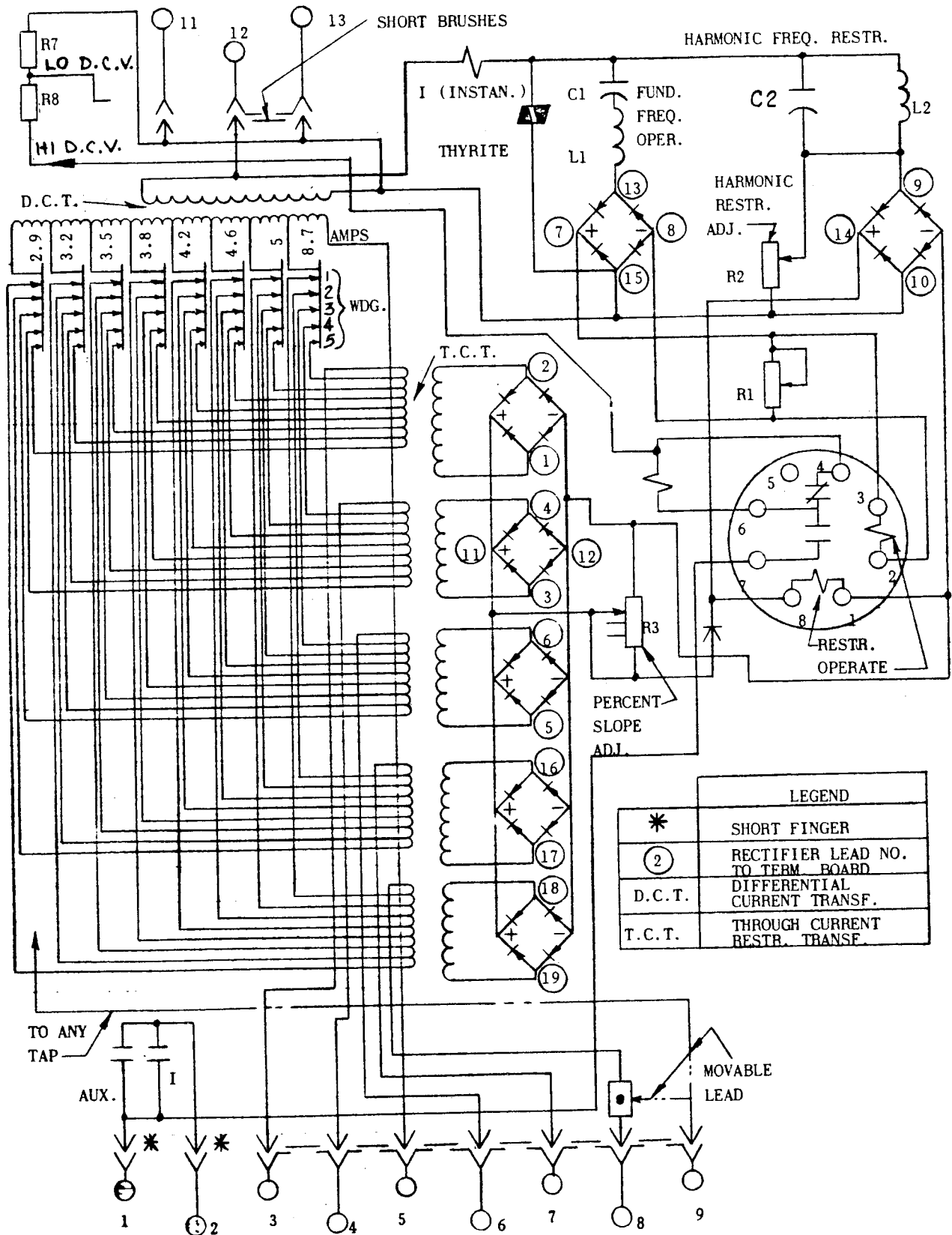


Fig. 2 (0178A9102-1) Internal Connections For Relay Type BDD18B

5

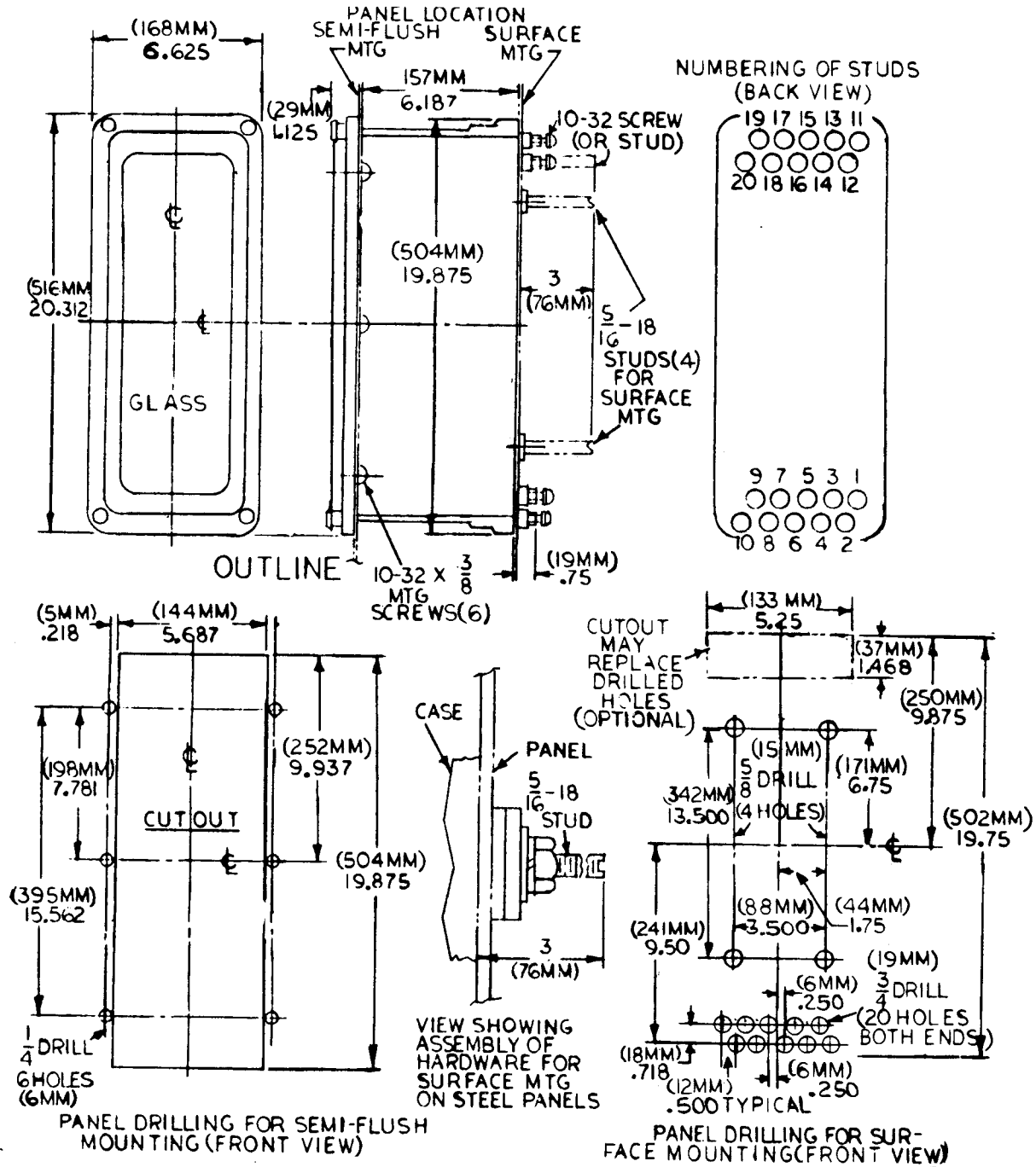


FIG. 5 (6209276-3) OUTLINE AND PANEL DRILLING DIMENSIONS FOR RELAY TYPE BDD18B



***Meter and Control  
Business Department***

---

11/90 (1400)

*General Electric Company  
205 Great Valley Parkway  
Malvern, PA 19355*