

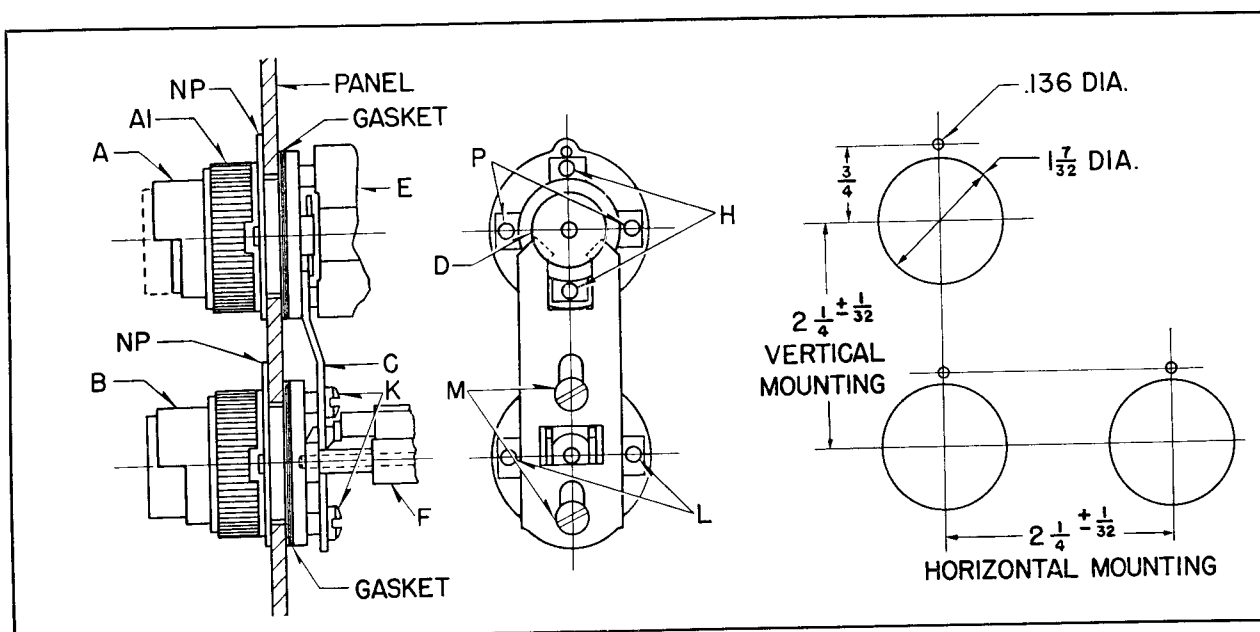


INSTRUCTIONS

INTERLOCK ASSEMBLY

Class 15-022

Type OT Pushbuttons



To obtain maintained contact assembly, the Type OT Pushbutton Interlock is assembled with another pushbutton operator as shown above.

INSTALLATION

Vertical Mounting

1. Standard Operator—Attach the pushbutton operator A to the panel in the usual manner with the gasket inserted between the panel and the shoulder of the operator housing, with the dowel pin in the top position. Put nameplate NP over the front of the operator protruding through the panel before screwing the clamp ring AI down tight.

2. Interlock Operator—Caution: Do not screw clamp ring tight until operator is completely installed. Attach the interlock operator B (as received in carton) to the panel in a similar manner as that described in 1 with the prongs of slide C on disk D but do not screw clamp ring tight at this time.

3. Push down the interlock plunger to draw the prongs of the slide over the edge of disk D on operator A. When the prongs of the slide have cleared disk D then push down the plunger of the standard

operator A to the depressed or bottom position. Holding the standard button A in depressed position, release the interlock button allowing the to pass under the disk D; then tighten the clamp on the interlock operator B.

4. Securely mount the contact block E on ator A in the desired position using tapped P or H. Assembly is now ready for operation.

Horizontal Mounting

1. Remove slide C from the interlock operator by removing screws K. Turn slide and plunger cam 90 degrees in the direction of the adjacent pushbutton operator A and attach in the same way using tapped holes L. Complete the installation as per Vertical Mounting.

It is recommended to grease the prongs of the slide to reduce friction between the prongs and the edge of the disk D.

Wiring

In line with standard practice, it is recommended that the start or similar running circuit be connected to the lower or make terminals of the contact block.