

TYPE L26 ELECTRICAL INTERLOCKS

FOR ALTERNATING AND DIRECT CURRENT

INSTRUCTIONS

DESCRIPTION

The type L-26 electrical interlock is an auxiliary contact device which can be furnished with one or more insulated copper contact discs for making or breaking the circuit.

The interlock is known as the Disc Type, Heavy Spring, Adjustable. The design is recommended for use with Magnetic Contactors above the 300 ampere ratings.

Each contact disc bridges two stationary contact studs, which may be mounted on the panel either above or below the disc with $\frac{1}{16}$ " or $\frac{5}{16}$ " gap so as to form either a single pole, double make or double break interlock. The operating rod on which the discs are assembled is adjustable at the top.

Interlocks are provided with studs for mounting on panels of 2" thickness or less.

Rating—The L-26 interlock will withstand 5 amperes continuously on con-

trol circuits up to 600 volts and will successfully break 15 amperes peak loads on alternating current. The discs are insulated from each other and the frame of the operating member for 600 volts maximum.

Operation—The operation of the interlock is dependent on some other moving member of the control assembly, usually a contactor.

Contact Tips—The stationary contacts consist of two studs mounted to the panel with renewable copper contact tips. The moving contact is a copper disc free to turn on the push rod and is insulated from the rod with an insulating washer assembled through the center. The disc is free to adjust itself in bridging across the two stationary contacts, thus giving assurance that the circuit will be completed each time the push rod is depressed. Each contact disc has a steel pressure spring which gives positive and sufficient contact pressure at all times.

MAINTENANCE

Care should be taken to see that the interlock is not permitted to get excessively dirty, as dust interferes with good contact and causes arcing which is destructive to the tips. When the stationary tips have burned away considerably, loosen the screw and turn the copper tip slightly, thus giving a new contacting surface. Make sure the screw is tightened again after the tip has been adjusted.

The copper disc is free to turn around the push rod. However, it should be examined occasionally to see that it is not corroded or pitted. In case it is pitted, move it around to a new position.

With proper attention, the type L-26 interlock will give satisfactory results over a long period without replacements.

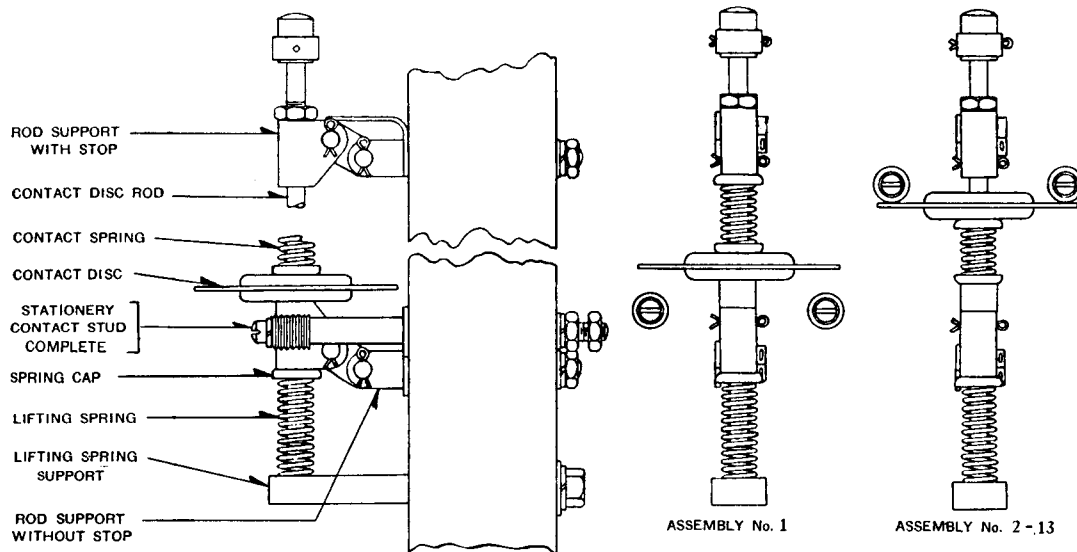


FIG. 1

*To be filed as an Instruction Leaflet and as Renewal Parts Data; For Renewal Parts, see Page 4.

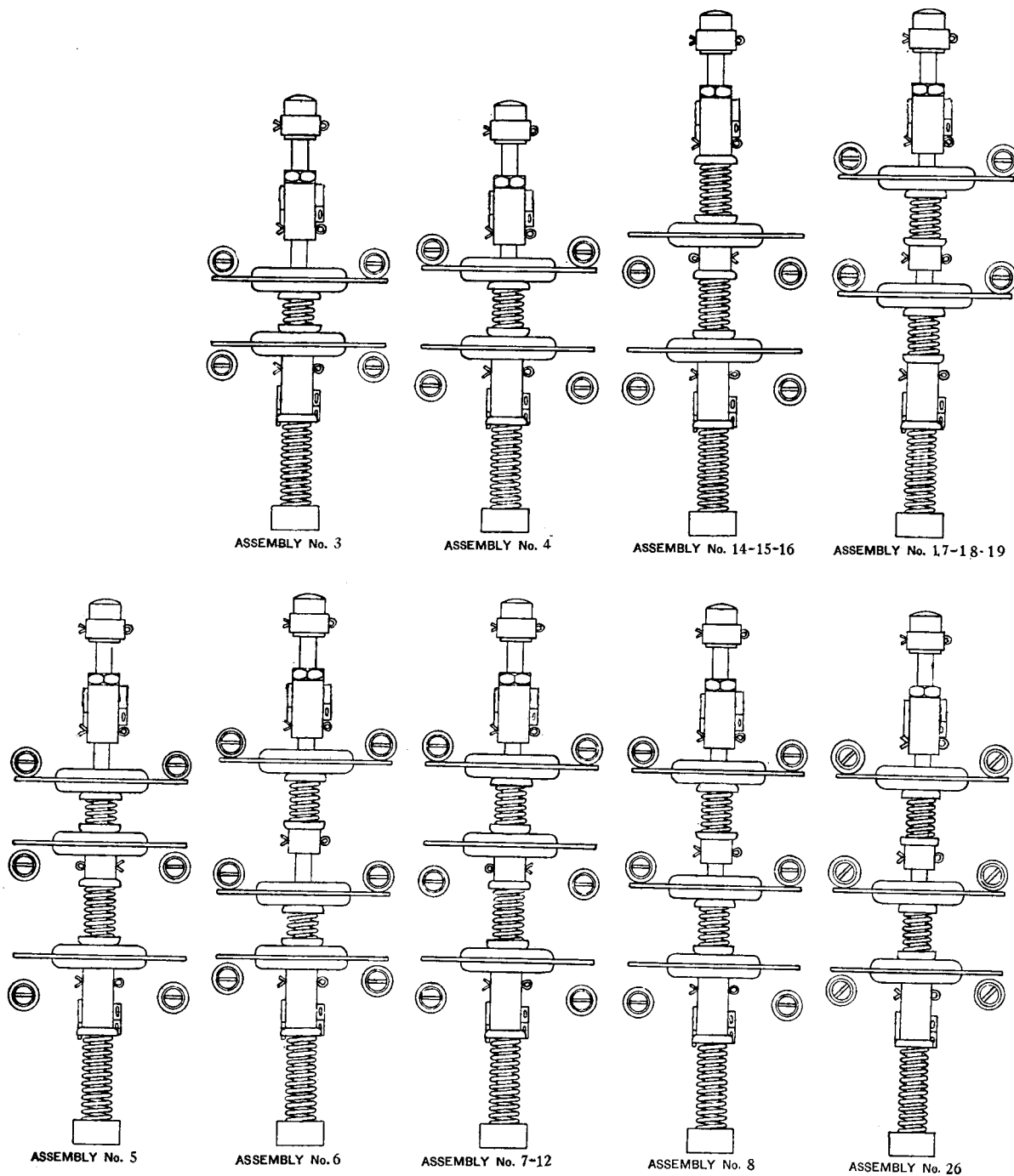
**TYPE L26 ELECTRICAL INTERLOCKS
FOR ALTERNATING AND DIRECT CURRENT**

FIG. 2

TYPE L26 ELECTRICAL INTERLOCKS

FOR ALTERNATING AND DIRECT CURRENT

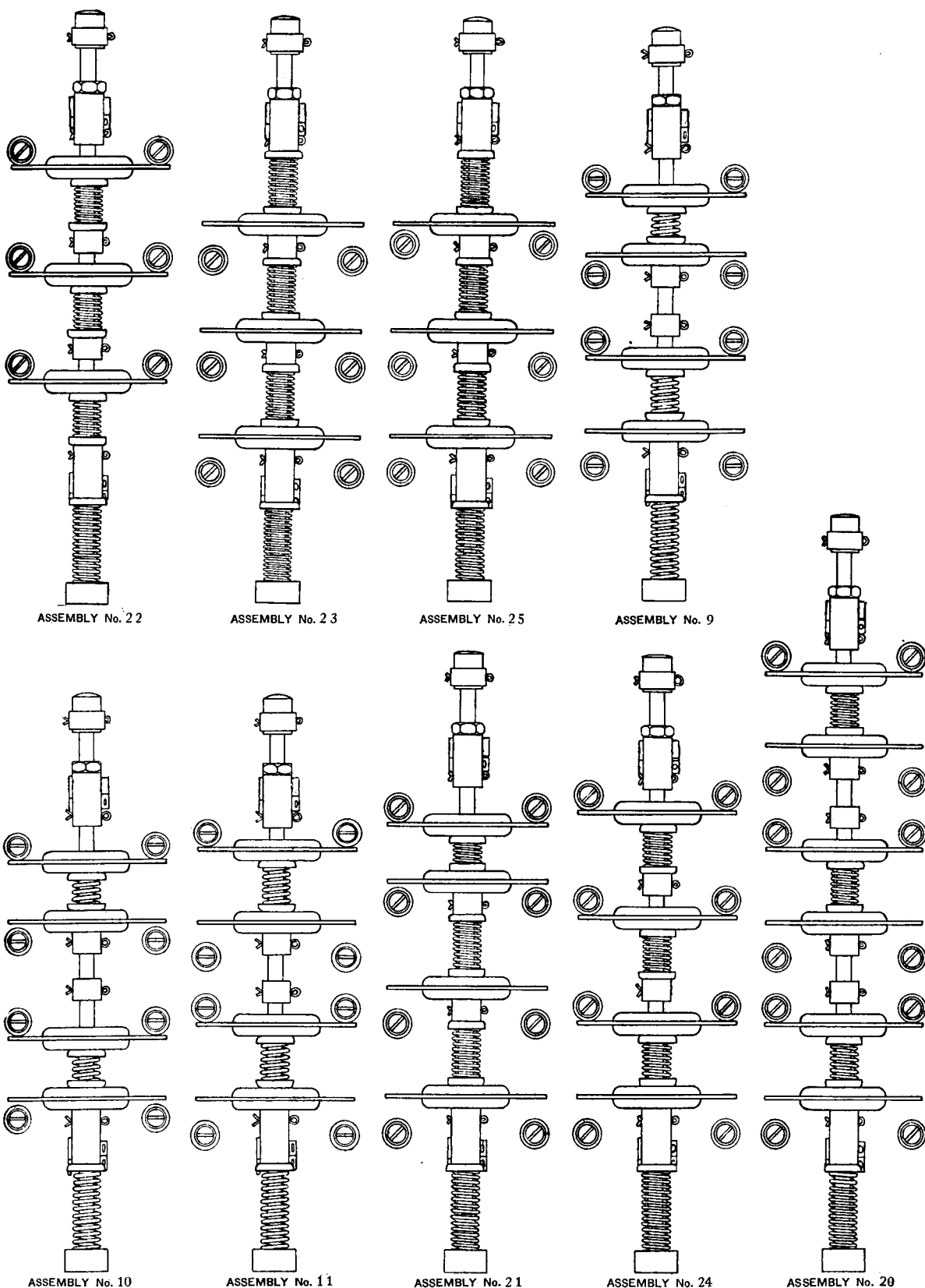


FIG. 3

TYPE L26 ELECTRICAL INTERLOCKS

FOR ALTERNATING AND DIRECT CURRENT

RENEWAL PARTS DATA

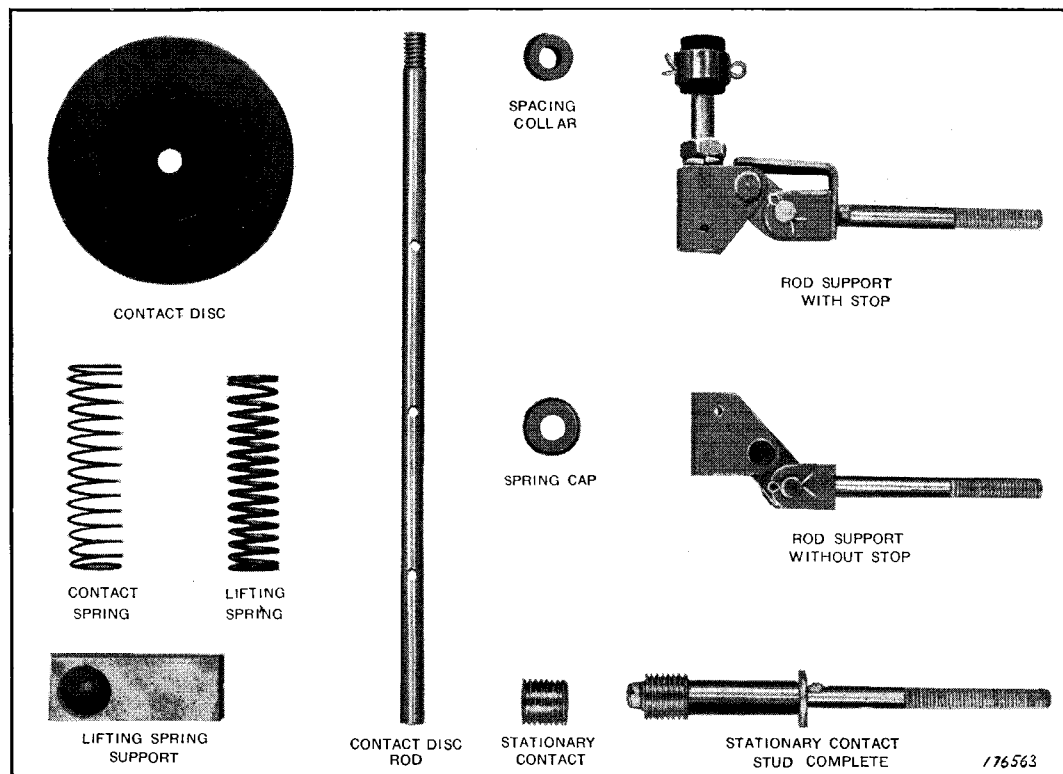


FIG. 4—RENEWAL PARTS FOR TYPE L-26 ELECTRICAL INTERLOCK

RECOMMENDED STOCK OF RENEWAL PARTS

For interlocks in use up to and including.....

| NAME OF PART | No. PER INTERLOCK | RECOMMENDED FOR STOCK | | | |
|---|-------------------|-----------------------|-------|--------|--|
| | | 2 | 5 | 15 | |
| **Contact Disc..... | 1 | 1 | 1 | 2 | |
| Contact Spring..... | 1 Set | 1 Set | 1 Set | 2 Sets | |
| Lifting Spring..... | 1 | 1 | 1 | 2 | |
| Spacing Collar..... | 1 Set | 1 Set | 1 Set | 2 Sets | |
| Spring Cap..... | 1 Set | 1 Set | 1 Set | 2 Sets | |
| Lifting Spring Support..... | 1 | 0 | 0 | 1 | |
| Contact Disc Rod..... | 1 | 0 | 0 | 1 | |
| Rod Support with Stop..... | 1 | 0 | 0 | 1 | |
| Rod Support without Stop.. | 1 | 0 | 0 | 1 | |
| **Stationary Contact Stud Complete..... | 2 | 0 | 0 | 1 | |
| **Stationary Contact Only.... | 2 | 1 | 1 | 2 | |

ORDERING INSTRUCTIONS

Quick shipments from local stock and prompt replies to inquiries without the necessity of referring to the Works for information, are possible only when complete identifying information for the parts are given. Careful observance of

**Quantities based on single disc interlock. Increase recommended stock according to contact discs used.

the following points on inquiries or orders is essential for correct shipments and prompt service.

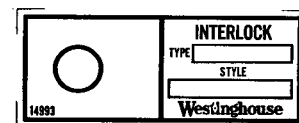


Fig. 5

1. Name the part, using the name shown on the illustration, figure 4, and state the quantity desired.
2. Specify the type of interlock and interlock assembly number, as shown on Pages 1, 2, and 3 also give name plate reading, see Fig. 5.
3. State whether shipment is to be made by express, freight or by parcel post.
4. Send all orders or correspondence to the nearest sales office of the Company.
5. Small orders should be combined, so as to amount to a value of at least one dollar, as order handling and shipping expense prevent us from billing a smaller amount.

WESTINGHOUSE ELECTRIC & MANUFACTURING COMPANY

East Pittsburgh Works

Printed in U.S.A.

East Pittsburgh, Pa.

*To be filed as an Instruction Leaflet and as Renewal Parts Data; for Instructions, see Pages 1, 2 and 3.