



DESCRIPTION • INSTALLATION • MAINTENANCE INSTRUCTIONS

ELECTRICAL INTERLOCKS TYPE L-62

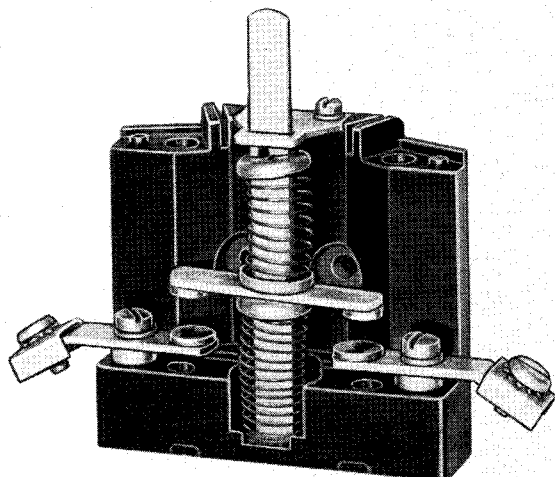


FIG. 1. Type L-62 Interlock
One Normally Open Contact

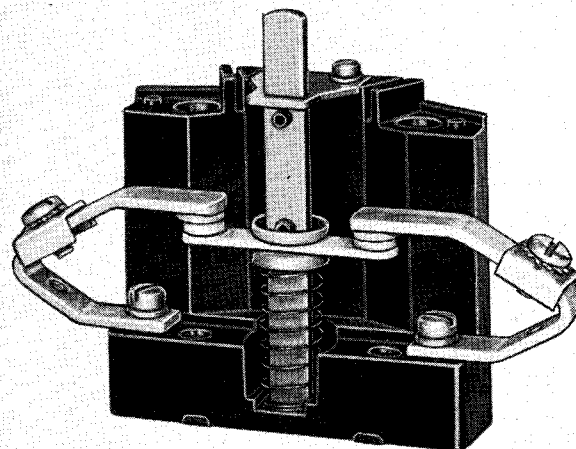


FIG. 2. Type L-62 Interlock
One Normally Closed Contact

THE TYPE L-62 ELECTRICAL INTERLOCK is an addition to the L-61 line of interlocks and is designed primarily for mounting on Type M d-c magnetic contactors rated from 600 to 2500 amperes.

It is available as one normally open or one normally closed contact.

Rating—The interlocks are capable of closing and carrying 10 amperes continuously. Their d-c interrupting capacity is 200 volt amperes at a maximum of 600 volts.

DESCRIPTION

The L-62 interlock is designed so that the interlock contacts "make" or "break" simultaneously with the contactor contacts. The construction of the interlock is shown in Figs. 1 and 2.

All of the contacts, both moving and stationary are provided with silver buttons to insure low-electrical resistance. Since the pushrod of this interlock

is one solid piece of metal, two separate circuits are not obtainable with this design.

The contact springs insure adequate contact force as the contacts wear. The return spring provides the force necessary to return the pushrod to its normal position.

The pushrod, its two bearing plates and the moving contacts are of hardened steel, assuring long-wearing life.

INSTALLATION AND MAINTENANCE

The interlock is a unit assembly which mounts on the base of the 600 and 900 ampere contactor by means of two screws. A $\frac{5}{16}$ " thick spacer must be assembled between the interlock base and the contactor base to provide for the increased pushrod travel. See Fig. 3. Since the mounting method is different for the M-810, M-810-R and the M-910 contactors, this base is not required. The operating finger is carried by an insulation block which is

ELECTRICAL INTERLOCK

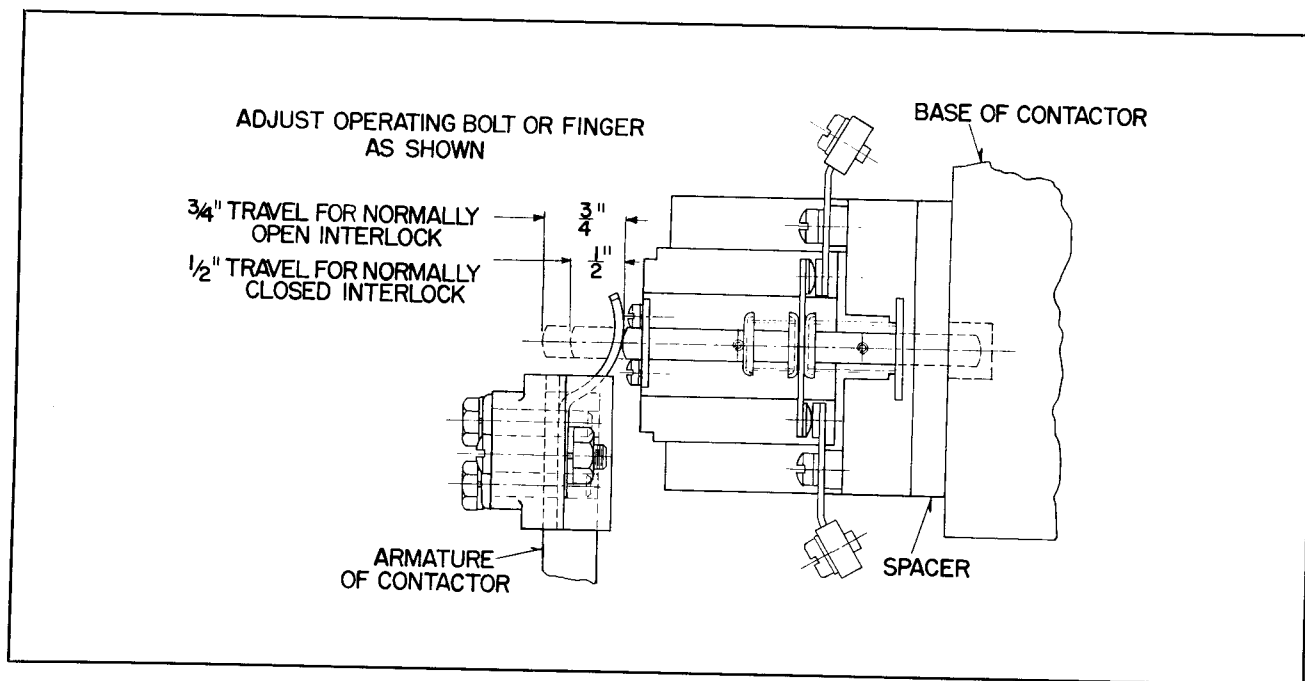


FIG. 3. Cutaway View of Type L-62 Interlock for Spring Closed Contactors M-601, M-701 and Magnet Closed Contactors M-610, M-710

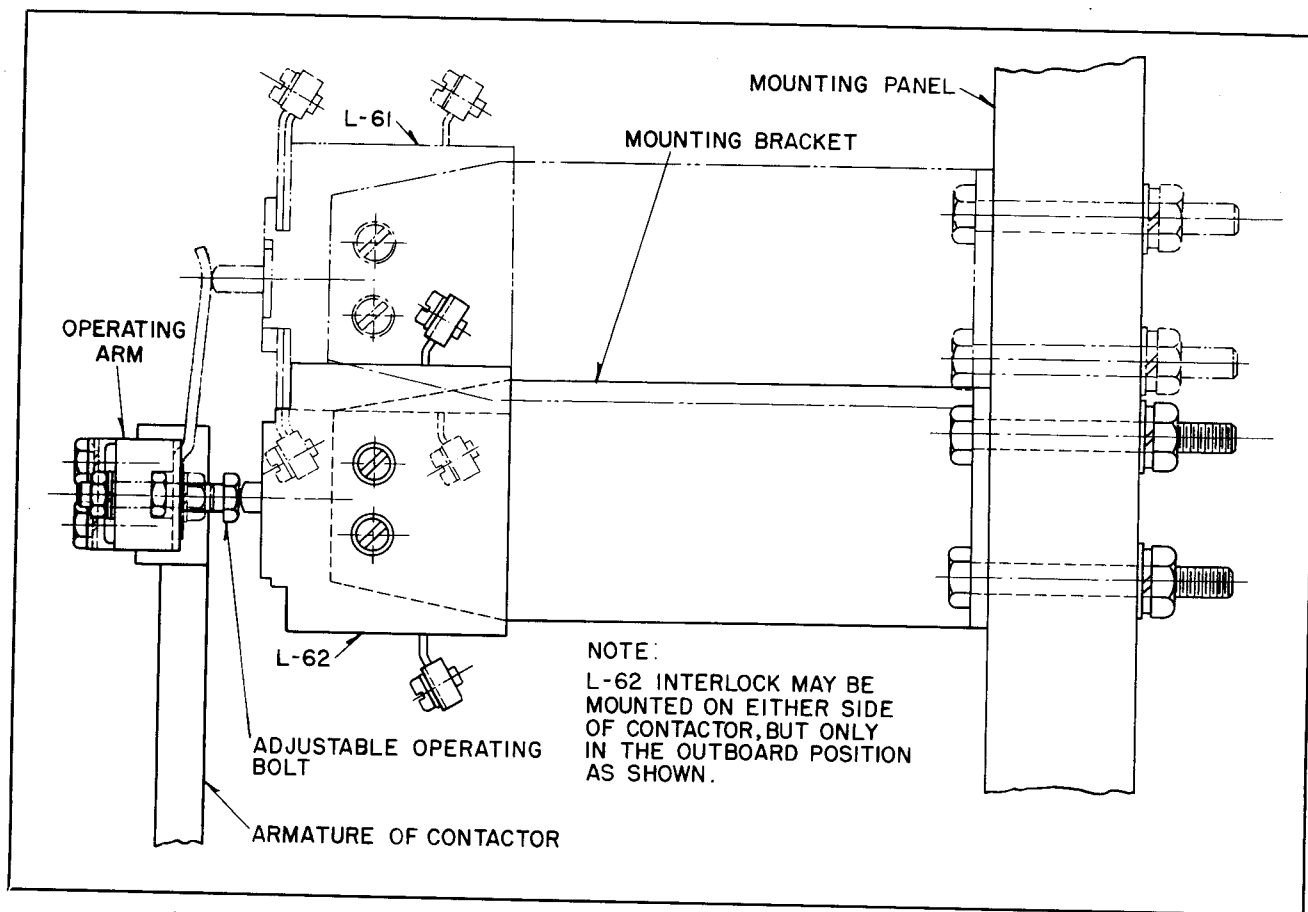


FIG. 4. Type L-62 Interlock for Magnet Closed Contactors M-810, M-810-R and M-910

bolted to the armature plate of the contactor, as shown in Figs. 3 and 4.

When an interlock and its operating finger are first mounted on the contactor, it may be necessary to adjust the parts to produce normal travels. This is accomplished by bending the finger or adjusting the operating bolt to produce the pushrod travels shown in Fig. 3.

Contacts should be replaced when the silver buttons are reduced to 30% of their original thickness.

A periodic inspection should be made to see that the interlock parts move freely without friction or binding. Oil should not be used on any part of the interlock as it hastens the accumulation of dust.

Type L-62 Interlock Application Table

Note: Read headings. Find magnetic contactor in left-hand column. Then select interlock, operating finger and mounting hardware style numbers in same horizontal line.

TYPE M D-C MAGNETIC CONTACTORS		TYPE L-61 INTERLOCK CONTACT ARRANGEMENT AND STYLE NUMBERS		OPERATING ARM, MOUNTING BRACKET OR SPACER AND HARDWARE	
		One Normally Open Contact	One Normally Closed Contact	Left Hand	Right Hand
Spring Closed	M-601	1780 515	1780 514	1780 506	1780 507
	M-701	1780 515	1780 514	1780 506	1780 507
Magnet Closed	M-610	1780 514	1780 515	1780 504	1780 505
	M-710	1780 514	1780 515	1780 504	1780 505
	M-810	1780 512	1780 513	1780 510	1780 510
	M-810-R	1780 512	1780 513	1780 510	1780 510
	M-910	1780 512	1780 513	1780 508 1780 508	1780 508 1780 508
NOTE: The Type L-62 Interlock can be used only in the Outboard Positions on the M-810, M-810-R & M-910 Contactors.					

WESTINGHOUSE ELECTRIC CORPORATION
BUFFALO PLANT • MOTOR AND CONTROL DIVISION • BUFFALO 5, N. Y.

Printed in U.S.A.

