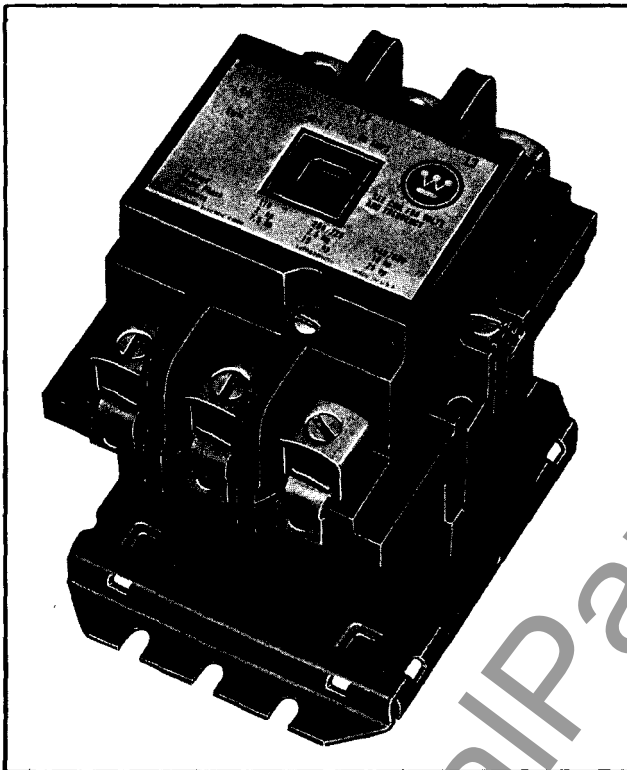


Instructions For A/200 Series Contactor, NEMA Size 2



I. L. 13158B



A/200 Series Contactor, NEMA Size 2

The Westinghouse A/200 Series Size 2 Contactor has been designed to be applicable as the control for motor load circuits, resistance loads, interconnections of multi-speed motor windings, utilizing main pole combinations of 2, 3, 4 and 5 poles.

Contactor Identification

The A/200 Series Contactor complete is identified for ordering by Cat. No.

The coil style number, voltage, and frequency rating is marked on the side of the coil.

Electrical Interlocks

An L-56, Normally Open only, electrical interlock is the standard holding interlock.

Coil

The A/200 Series Contactor is available with single or dual voltage coil. The contactor, when supplied with a dual voltage coil, is normally wired for the high voltage (HV) connection.

Voltage	Coil Volt-Amp Data - 60 cps.			
	2 & 3 Pole		4 & 5 Pole	
	Open VA	Closed VA	Open VA	Closed VA
110	160	25	200	30
220	160	25	200	30
440/600	160	25	200	30

Maintenance

FIRST TURN OFF POWER

To inspect contacts -

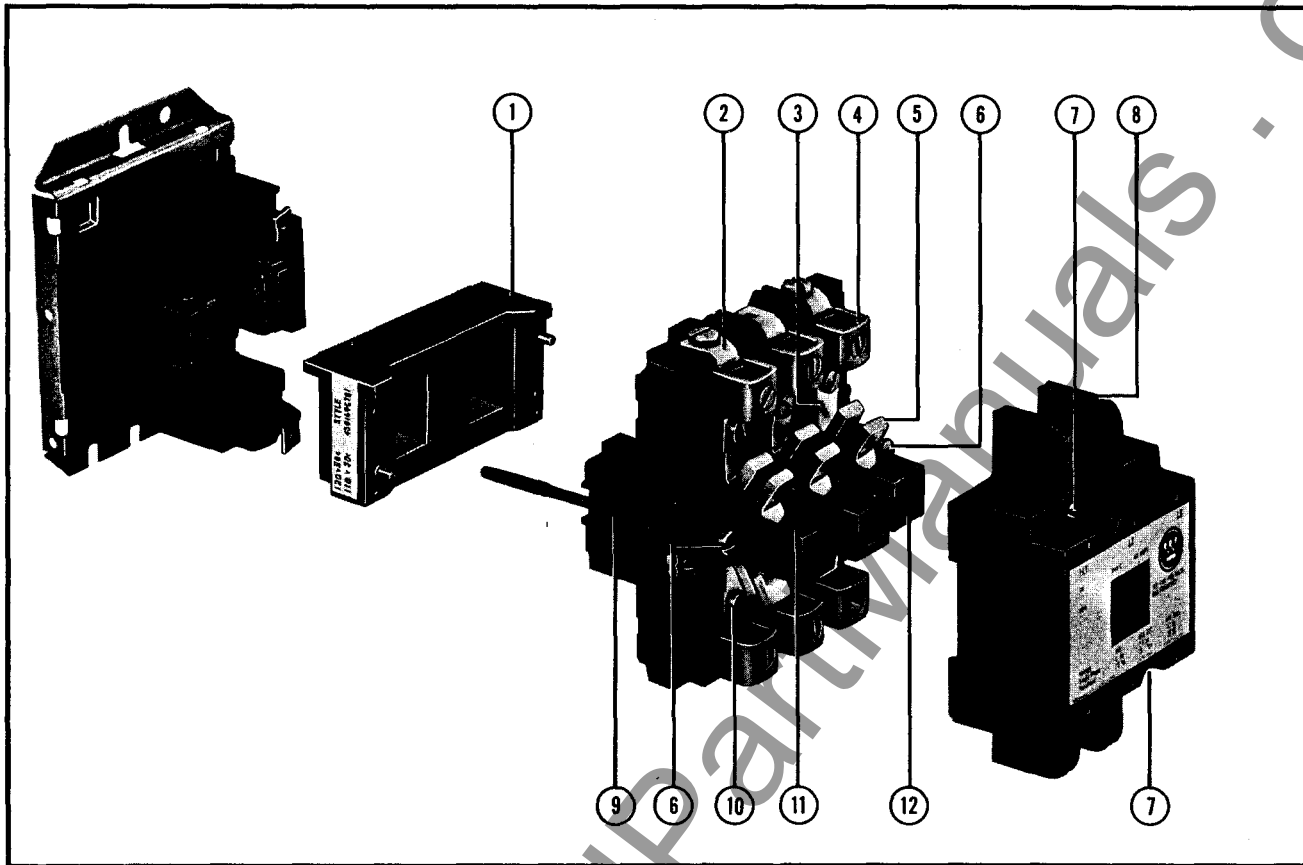
Loosen the two arc box assembly screws (7) located immediately above and below the nameplate and remove arc box (8). Contacts are visible.

To replace contacts -

After removing arc box (8), and having replacement contacts at hand, remove the moving contact carrier (5) by compressing the overtravel spring (11) and displacing carrier from crossbar (12). Stationary contact carriers (3) are removed by only loosening the retaining screw (10) and sliding out the carrier.

To replace contact carriers, reverse above procedure, making sure that stationary carriers are secure, moving carriers are free to move, overtravel springs are seated and crossbar moves freely when arc box is in position.

The silver-cadmium oxide contact buttons need no dressing or lubricant throughout their life.



A/200 Series Motor Controller Components

IMPORTANT - Replace all contacts as a group to avoid misalignment.

To replace the coil -

Loosen the assembly screws (6) located to the immediate left and right of the arc box.

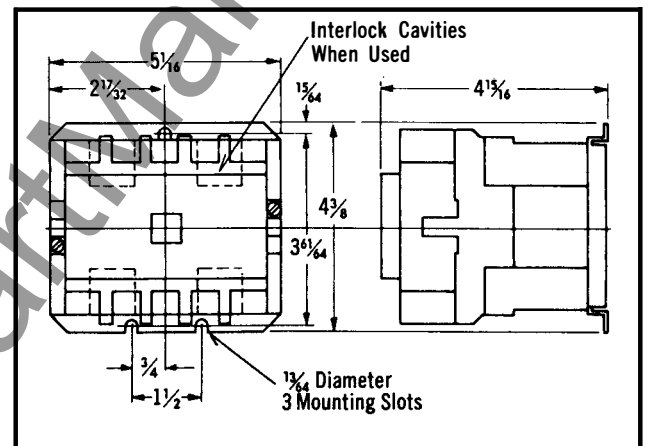
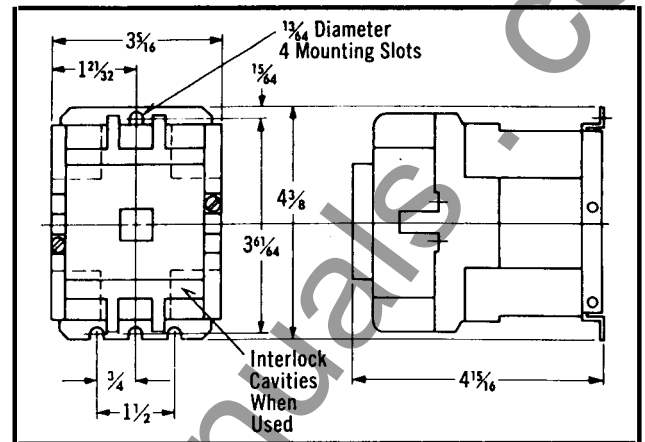
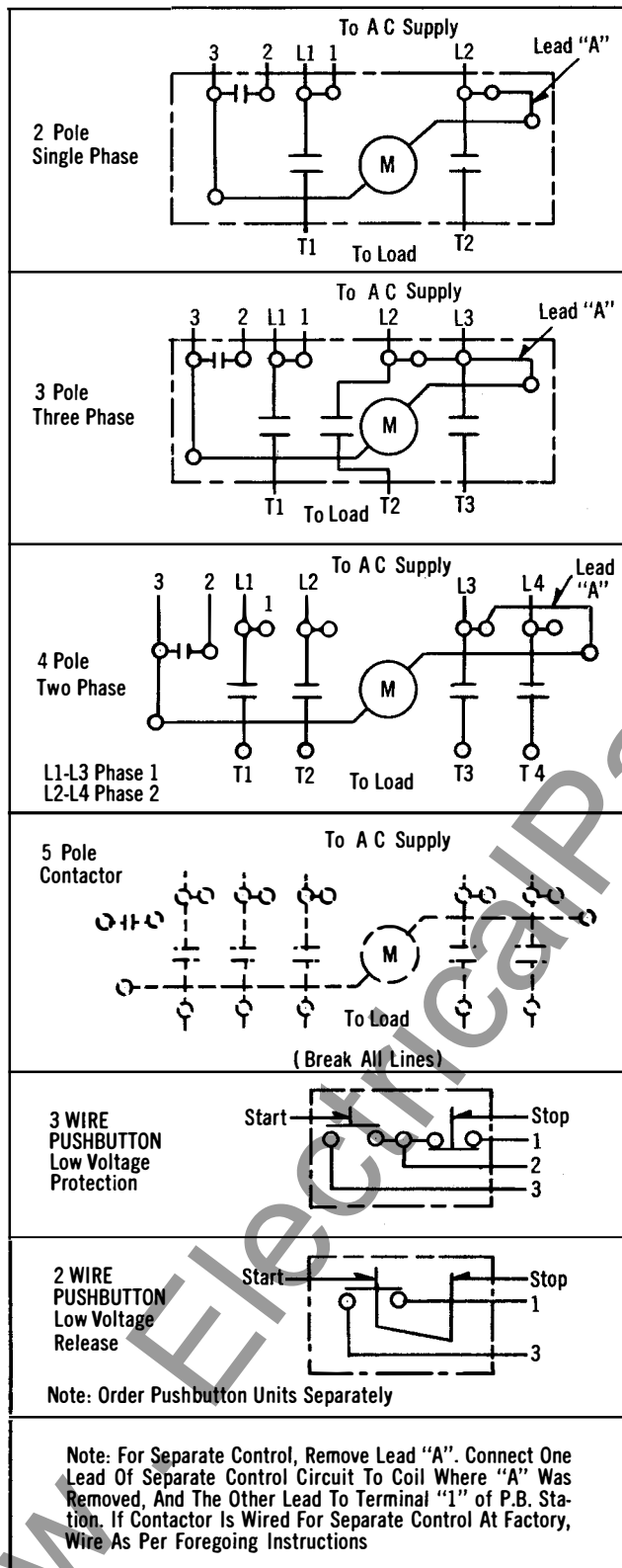
Pull loosened upper base structure (9) forward. Pull coil (1) from the upper base, plug in new coil, replace upper base structure and check interlocks for secureness when repositioning upper base.

Tighten assembly screw (6).

Magnet - Armature Assembly

Self alignment and permanent air gap features of the magnet-armature make replacement maintenance unnecessary. Mating pole face surfaces should be kept clean.

Renewal Parts	
Contact Carrier Kit	
Pole Combination	Style Number
2 Pole	373B331G11
3 Pole	373B331G12
4 Pole	373B331G13
5 Pole	373B331G14
L-56 Electrical Interlock	
One Universal Interlock (NO and NC poles) S#503C782G01.	
Coil	
Order by style number, voltage and frequency.	



Dimension Drawings

Wiring Diagrams

www . ElectricalPartManuals . com

Westinghouse Electric Corporation
Standard Control Division, Beaver, Pa.

Printed in U.S.A.