



DESCRIPTION

OPERATION

MAINTENANCE

INSTRUCTIONS

REVERSING *Life-Line* Starter*

TYPE N, SIZE 1 CLASS 11-211N.1 2 PHASE, 4 POLE

THE TYPE N REVERSING LIFE-LINE-STARTER has been designed primarily to provide reversing operation for A-C motors and consists of two 4-pole non-reversing contactors mechanically interlocked to prevent both contactors from being closed at the same time. Up to three electrical interlocks per contactor (total of 6 on starter) may be mounted on this device depending upon circuit requirements (see Electrical Interlocks). The LINESTARTER is complete with Line, Load, and Control Terminals, both Control and Main Cross Wiring, and one normally open electrical interlock on each contactor (total of 2 on complete unit).

For use with A-C motors, the following table of ratings applies.

MAXIMUM A-C RATINGS

Open—25 Amperes		Enclosed—22½ Amperes	
Volts		HORSEPOWER	
		Polyphase	
110		3	
208-220		5	
440-600		7½	

CONSTRUCTION

This starter employs two 4-pole non-reversing contactors of the inverted clapper type with knife-edge bearing and having positive action through the use of a compression kick-out spring. This construction provides maximum accessibility for servicing and maintenance and allows coil change to be a simple operation. All current carrying parts are of high conductivity copper or copper alloy of large cross-section resulting in high electrical efficiency. Long life and low contact drop are assured by fine silver contacts with large area of bond for current conduction and heat transfer.

Pressure-type connectors on main and control terminals permit the use of either solid or stranded wire without soldered joints.

NEW INFORMATION

* Trade-Mark

CONNECTIONS

This LINESTARTER provides connections for several control schemes, three of which are shown in the following diagram:

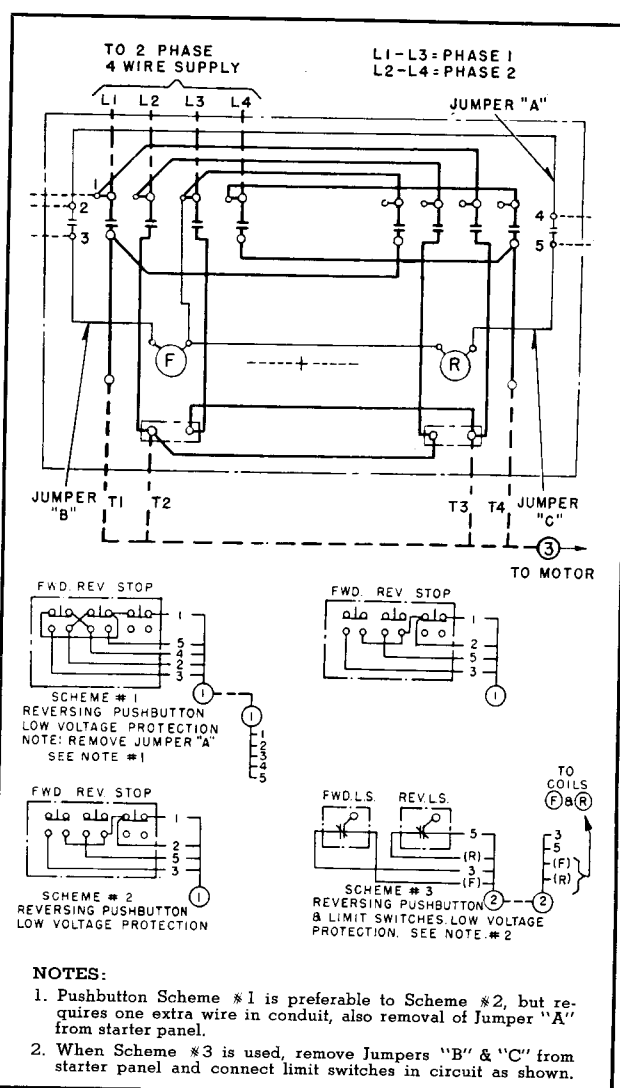


FIG. 1. Wiring Diagram of Linestarter and Connections to Master Switches

INSTALLATION

1. Clean the magnet surfaces.
2. Operate the armature by hand to be sure that all parts move freely.

EFFECTIVE JULY, 1950

REVERSING LIFE-LINESTARTER

STARTER IDENTIFICATION

This LINESTARTER complete is identified by style number (shown on carton and as listed in Price List) and consists of two basic parts: (1) the starter unit and (2) the coils.

The style number of the starter unit (without coils) is S# 1588 538 and appears on the metal nameplate attached to the unit.

The coil style is marked on the coil itself along with its voltage and frequency rating.

Style identification for use in ordering either a complete LINESTARTER or individual coils is given in the table below:

STYLE IDENTIFICATION

VOLTS	CYCLES	COIL STYLE	COMPLETE STYLE
110	60	1470 261	1588 553
110	25	1470 262	1588 554
208	60		
220	60		
220	25	1470 263	1588 555
380	50		
440	60		
480	60	1470 264	1588 556
550	60		1588 557
600	60		1588 558
110	50		1588 559
220	50		1588 560
440	50	1470 269	1588 561
550	50	1470 270	1588 562
440	25	1470 271	1588 563
550	25		

ELECTRICAL INTERLOCKS

This starter comes equipped with **one** normally open interlock on each contactor. A **second** interlock for each contactor may be obtained by ordering either S# 1314 884, normally open, or S# 1314 885, normally closed. A **third** interlock per contactor may be had by ordering either S# 1315 886, normally open, or S# 1314 887, normally closed. The above normally open interlocks may readily be installed as normally closed interlocks per instructions enclosed with each interlock.

MAINTENANCE

The sealing surfaces on the magnet frame and armature should be kept clean.

Do not lubricate the contact tips or bearings. Fine silver contacts need no dressing throughout their life.

To Remove Contactor Coil, remove the three round head magnet mounting screws and withdraw the coil and magnet.

When Installing Contactor Coil, make sure that round head magnet mounting screws are securely tightened.

PRINCIPAL RENEWAL PARTS

Contactor Moving Contact.....S# 1314 985
Contactor Stationary Contact.....S# 1314 986
Contactor Contact Spring.....S# 1314 961



WESTINGHOUSE ELECTRIC CORPORATION
BEAVER PLANT • STANDARD CONTROL DIVISION • BEAVER, PA.
Printed in U.S.A.