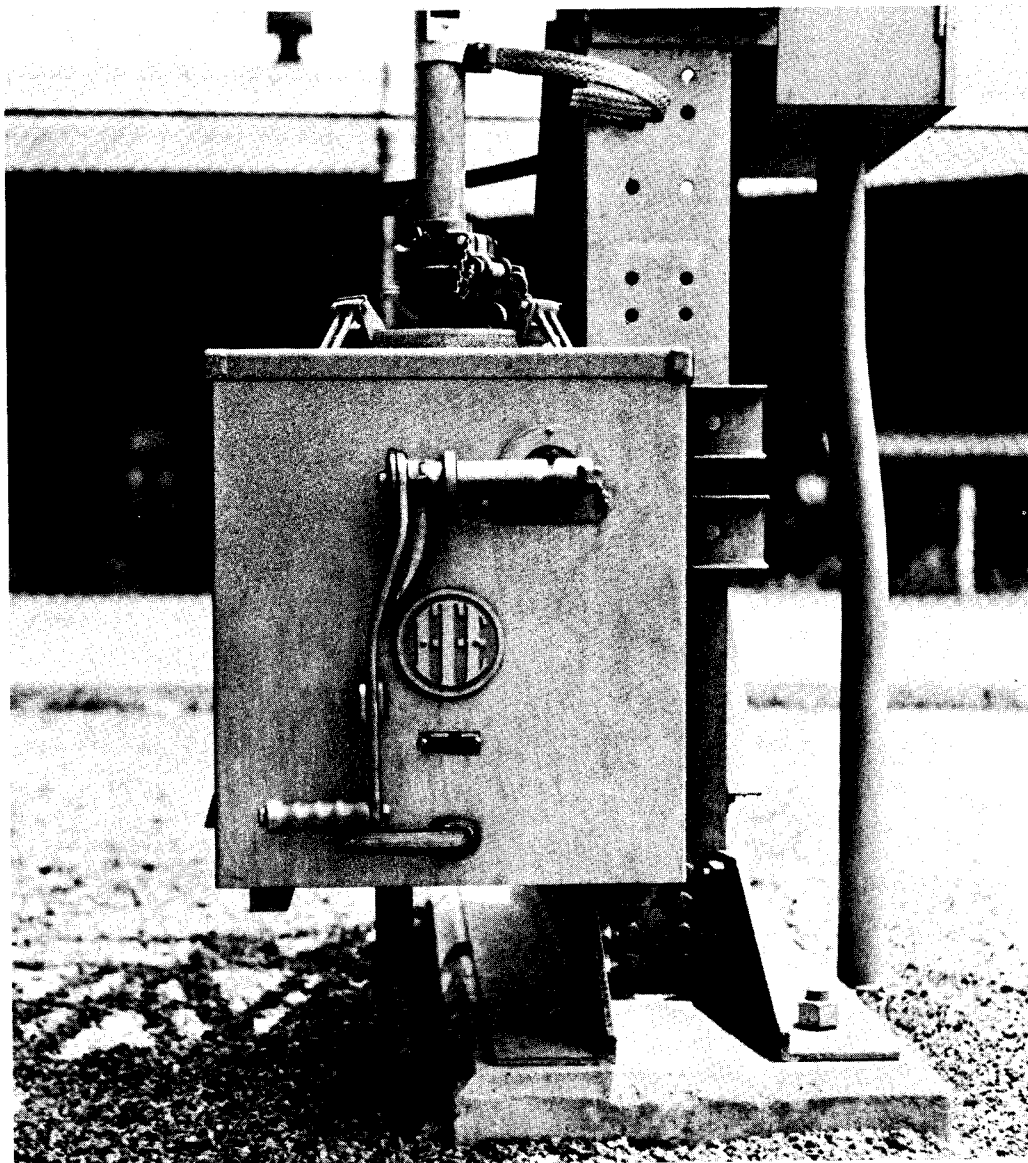


OPERATING MECHANISMS

INSTRUCTIONS

INSTALLATION AND MAINTENANCE

MO-10 MOTOR OPERATOR

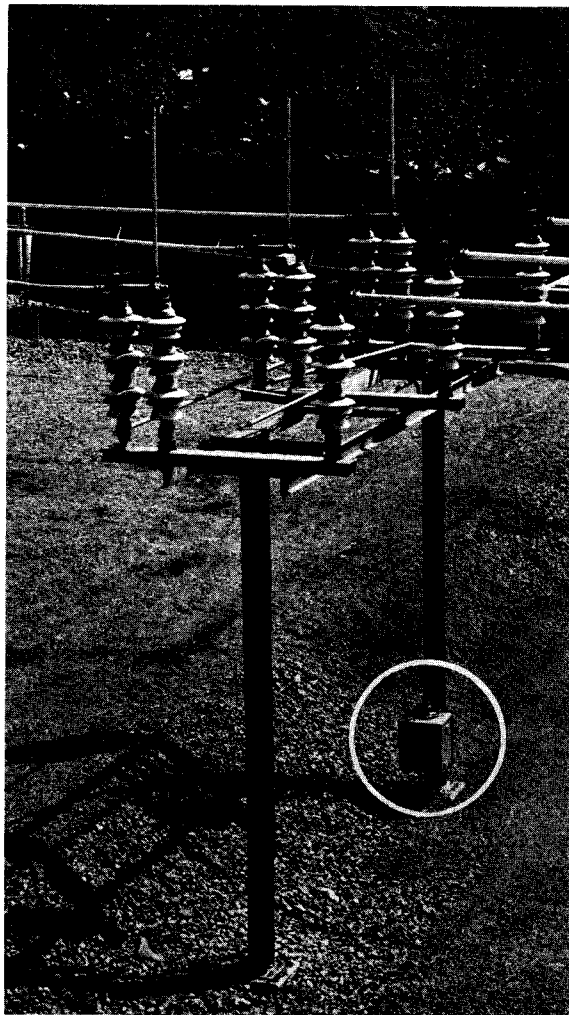


IMPORTANT

Make absolutely sure applicable equipment is deenergized and properly grounded before proceeding with any installation or maintenance.



ITE Imperial
CORPORATION



**Fig. 11. MO-10 used for operating I-T-E's
138-kV TTR6 vertical-break switches.**

These instructions do not purport to cover all details or variations in equipment, nor to provide for every possible contingency to be met in connection with installation, operation, or maintenance. Should further information be desired or should particular problems arise which are not covered sufficiently for the purchaser's purposes, the matter should be referred to the nearest I-T-E Sales Office.



ITE Imperial
CORPORATION

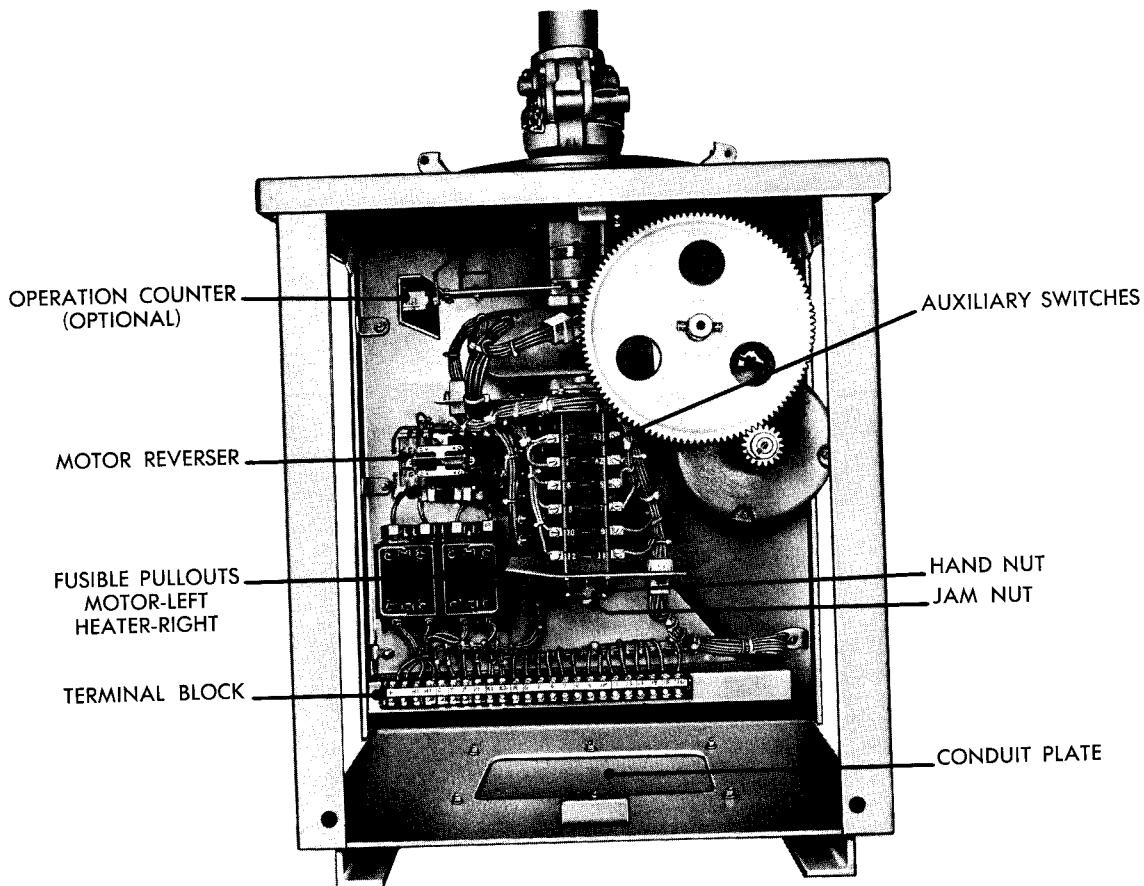


Fig. 7. MO-10 motor operator, inside view;
gear cover removed to show detail.

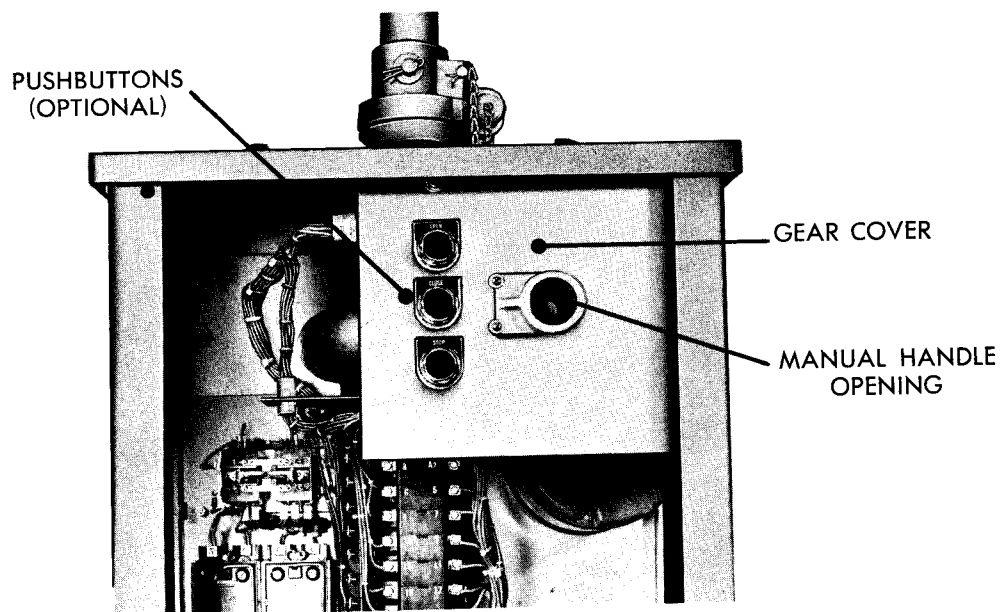


Fig. 8. Inside view with gear cover in position.

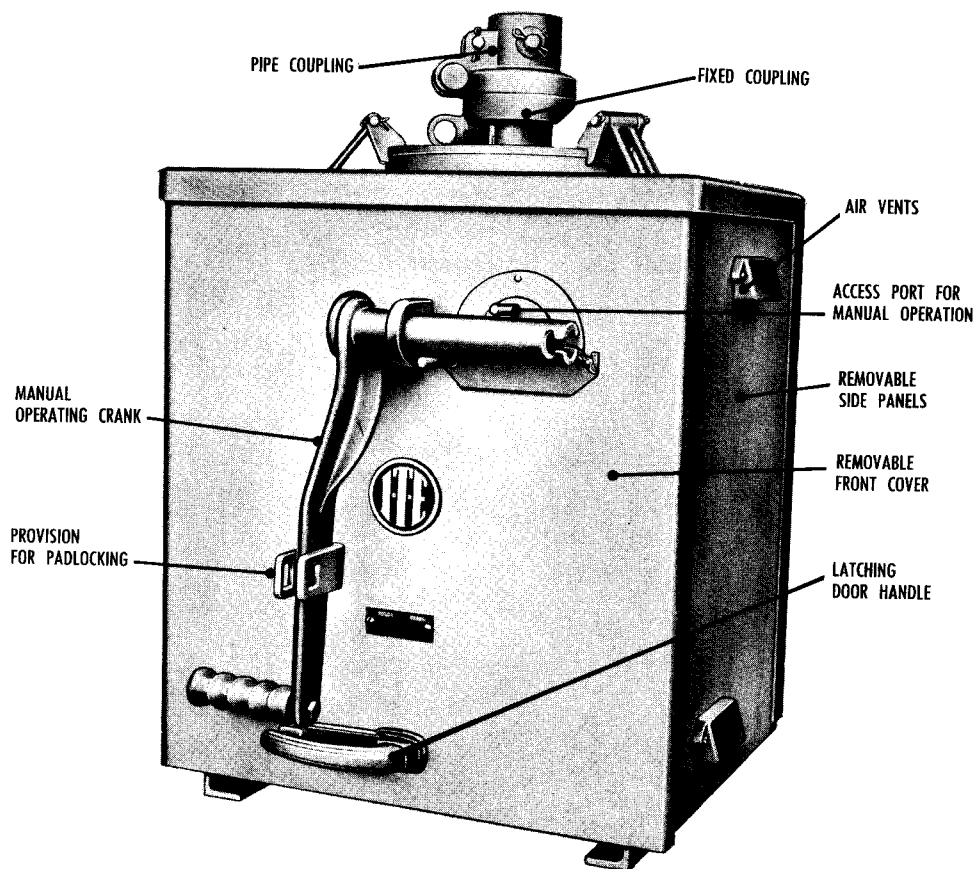
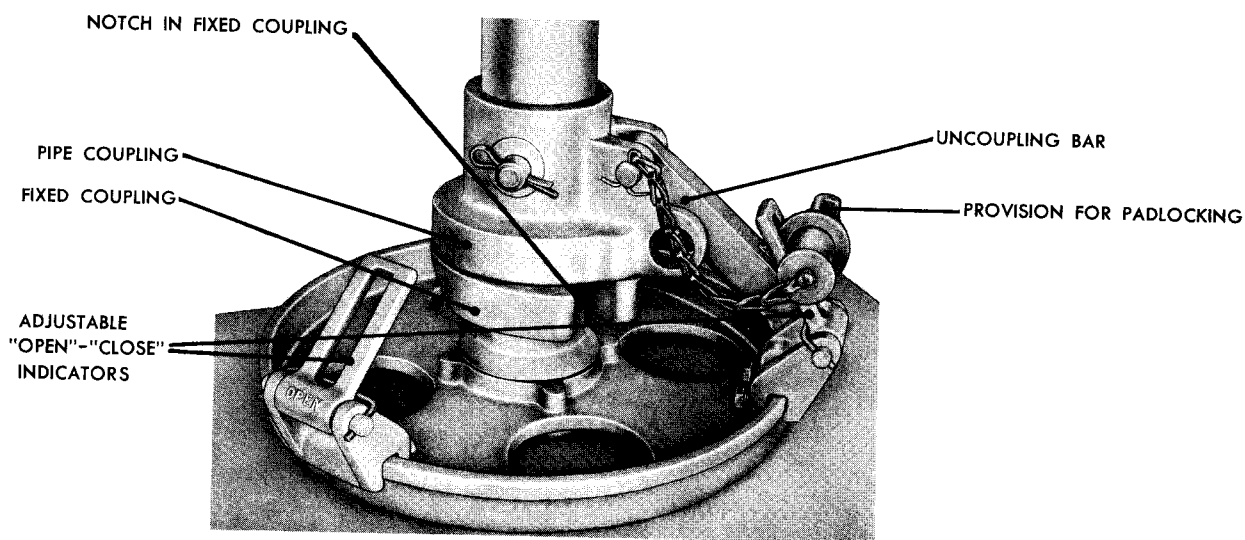


Fig. 9. MO-10 motor operator, outside view.



**Fig. 10. Motor mechanism disengaged;
operating pipe latched in closed position.**