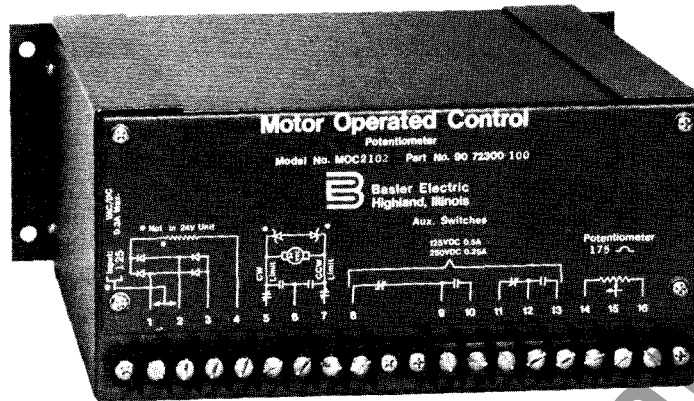


Class 200 Equipment MOTOR OPERATED CONTROL (POTENTIOMETER)



DEVICE NO. 70

FEATURES:

- Operates with either AC or DC Power
- Four Standard Operating Voltages Available
- Dynamic Braking
- Normal or Precise Control Resolution
- Wide Operating Temperature Range
- Adjustable Auxiliary Limit Switches
- Moisture and Dust Resistant Enclosure
- Mechanically Rugged
- Compatible with Regulator, Governor, or Other Control Systems
- Control Switch Available as An Accessory
- Standard Controls Available From Stock
- CSA Approved

DESCRIPTION:

Many control systems require remote, multiple-point adjustment; for example, prime mover governing systems, generator voltage regulating systems, automated industrial processes, etc. The Basler MOC2-Series of Motor Operated Potentiometers is designed to satisfy these demands reliably and economically. Two basic wire wound controls are available. The normal resolution potentiometer, rated 10 watts, rotates 300° in 21.5 seconds, while the precise 2 watt resolution control rotates 1080° in 80 seconds.

These controls are designed to operate under the shock and vibration environments normally associated with power systems and industrial controls. In addition, the operating mechanism is enclosed in a sheet metal cabinet for protection from moisture and dust. When other than standard values are required, the MOC2-Series is readily adaptable. Motor Operated Controls used in operational tests in the Basler experimental laboratory have surpassed 500,000 pulsed operations without failure.

CONTROL PARTICULARS:

- **MOTOR DRIVE POWER:**
Voltage 24, 32, 48 or 120 Volts, Nominal
Current 0.3 Amperes, Maximum
Frequency DC to 450 Hz
Phase Single
- **OUTPUT FUNCTIONS:** Linear wire wound potentiometers available in two basic types: in resistance values to 25K ohms in the normal resolution, 10 watt rating and to 100K ohms in the precise resolution, 2 watt rating (see Table 1).
- **OVERVOLTAGE:** Withstands 135%, maximum, for 5 minutes.
- **LIMIT SWITCHES:** Motor drive and auxiliary NC-NO limit switches are factory set within 2%±0.5% of element elec-

trical rotational limit. Auxiliary switches can be readjusted by user.

- **AUXILIARY LIMIT SWITCH RATINGS:** 0.5 A at 125 VDC, and 0.25 A at 250 VDC, Resistive load.
- **DYNAMIC BRAKING:** Motor shaft stops within 10 msec of shorting of motor terminals.
- **OPERATING TEMPERATURE RANGE:** -40°F (-40°C) to +158°F (+70°C)
- **SHOCK:** Withstands 15 G's in all planes.
- **VIBRATION:** Withstands up to 5 G's at 260 Hz.
- **MAXIMUM WEIGHT:** 9 Pounds, net; 10.5 Pounds, shipping.

Basler Electric

P. O. BOX 269 HIGHLAND, ILLINOIS 62249, U.S.A. PHONE 618-654-2341 FAX 618-654-2351

SRA-6
5-92

HOW TO ORDER

Specify: Motor Operated Control, Basler Model Number _____ (see Table 1).

The model number of the MOC2-Motor Operated Control is a combination of numbers indicating the features included in the device. A sample model number, showing the method in which the various features are designated, is shown below in Table 1.

TABLE 1 — MODEL NUMBER ORDERING GUIDE

Model Prefix	Motor Drive Voltage*	CONTROL ELEMENT OUTPUT CHARACTERISTICS				
Sample MOC2	Model Number 1	03				
MOC2	1 — 120V 2 — 48V 3 — 32V 4 — 24V 9 — Special (Specify Voltage)	Control Element	Resistance (Ohms)	Maximum Power (watts)	Adjustment Rate (ohms/sec)	Traverse Time (Sec)
		02 — Potentiometer***	175 ± 10%	10	8.15	21.5 (Normal)
		03 — Potentiometer**	250 ± 5%	2	3.13	80 (Precise)
		04 — Potentiometer**	250 ± 10%	10	11.7	21.5
		05 — Potentiometer***	500 ± 5%	2	6.26	80
		07 — Potentiometer**	5000 ± 10%	10	232.6	21.5
		99 — Special*** (Specify resistance and power rating)				

* Motor Drive Voltage, +10%, DC or AC (to 450 Hz)

** Potentiometers have linear taper

*** Special linear wire wound controls are available in the normal resolution, 10 watt rating from 1 to 25,000 ohms and in the precise resolution, 2 watt rating from 10 to 100,000 ohms

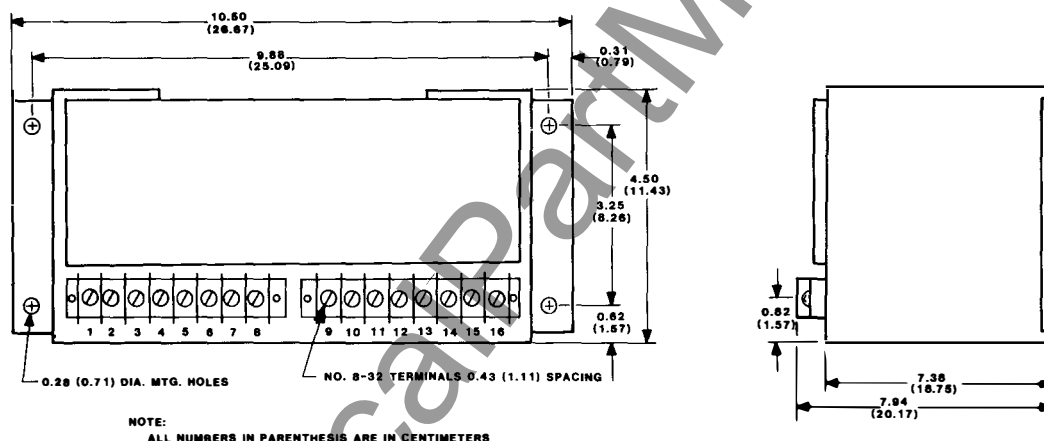


FIGURE 1 — OUTLINE DRAWING — MOC2 CONTROL

ACCESSORY DEVICES:

SWITCH AND DIAL PLATE SETS:

P/N 9 1748 05 106 - Switch, Rotary, 3-position, momentary action, with pistol grip handle; with black dial plate.

P/N 9 1748 05 107 - Switch, Rotary, 3-position, momentary action, with pistol grip handle; with "LOWER-OFF-RAISE" "FREQUENCY CONTROL" dial plate.

P/N 9 1748 05 108 - Switch, Rotary, 3-position, momentary action, with pistol grip handle; with "LOWER-OFF-RAISE" "VOLTAGE CONTROL" dial plate.

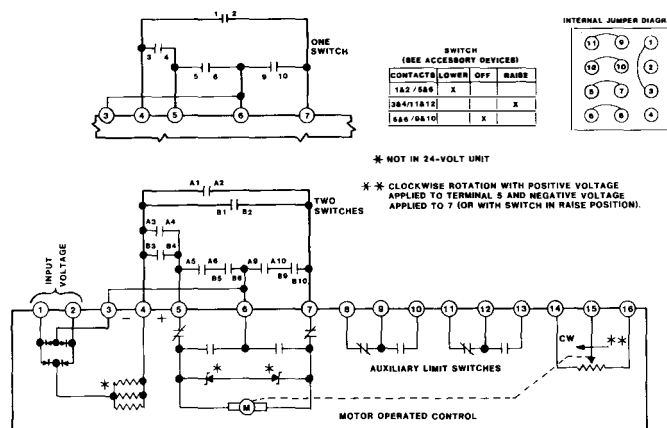


FIGURE 2 — TYPICAL INTERCONNECTION DIAGRAM

Basler Electric

ROUTE 143, BOX 269, HIGHLAND, ILLINOIS U.S.A. 62249
PHONE 618-654-2341 FAX 618-654-2351

P.A.E. Les Pins, 67319 Wasselonne Cedex FRANCE
PHONE (33-3-88) 87-1010 FAX (33-3-88) 87-0808

<http://www.basler.com>, info@basler.com

