



# INSTALLATION • OPERATION • MAINTENANCE INSTRUCTIONS

## WESTINGHOUSE TYPE JY POWER LINE CARRIER POWER DISTRIBUTION UNIT

### APPLICATION

This unit is used with type JY carrier assemblies to control the power to these assemblies and to provide them with fuse protection.

### DESCRIPTION

The unit consists of a double-pole, single-throw power switch and two fuses mounted on a 1-3/4" wide (one panel unit) rack dimensions and wiring of the unit are shown on the attached drawings. This power distribution unit is identified as style #1352788.

### INSTALLATION

The unit is usually shipped as part of an equipment assembly. When it is received as a separate item, it is mounted on the rack of a JY cabinet with the hardware furnished. When facing the front of the cabinet, mount the unit with the panel terminals at the left.

Connect the power source to terminals 1 and 2, and the equipment to terminals 3 and 4. The circuit in this unit is ungrounded, and may be used for a-c or d-c with either polarity on the terminals. No fuses are furnished with the unit. They are supplied separately.

To order any replacement parts for this unit, give the nameplate information, and a description of the replacement parts required.

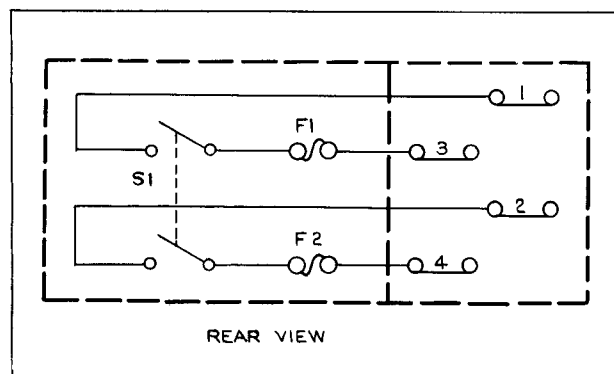


Fig. 1—Internal Schematic of the type JY Power Distribution Unit.

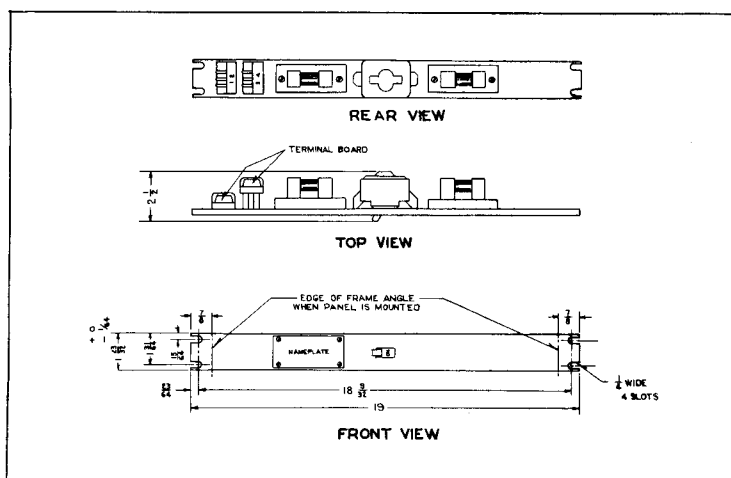


Fig. 2—Outline and Drilling Plan of the Type JY Power Distribution Unit.  
For Reference Only.

NEW INFORMATION

EFFECTIVE JUNE 1949

**WESTINGHOUSE ELECTRIC CORPORATION**  
METER DIVISION

**NEWARK, N.J.**

Printed in U.S.A.