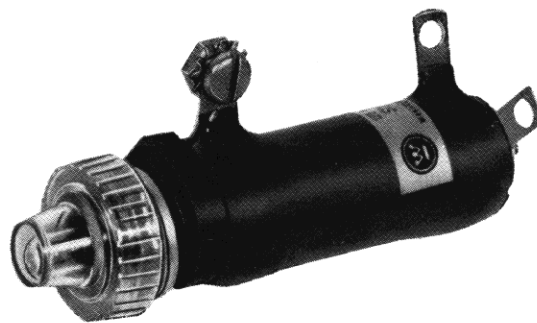




May 1990  
Supersedes Descriptive Bulletin 34-350,  
pages 1-8, dated August 1977  
Mailed to: E, D, C/34-000B

## Switchgear Indicating Lamps

Indicating Lamps



Switchgear lamps are designed to give the best service for switchgear assembly requirements. Each of the individual items will provide the highest in efficiency and accuracy for the most effective operation. Maximum flexibility in operation and safety in maintenance are an integral part of all switchgear details. Manufacturing facilities assure complete quality control.

In This Bulletin:	Page
EZC Minalite®	2
Rectangular Minalite	3



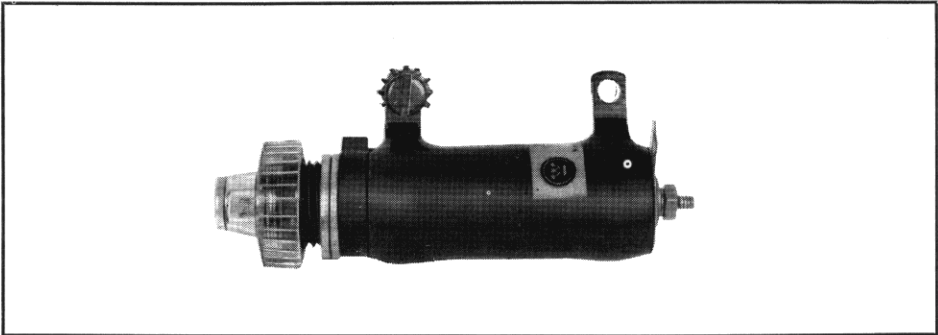
Indicating Lamps

EZC Minalite

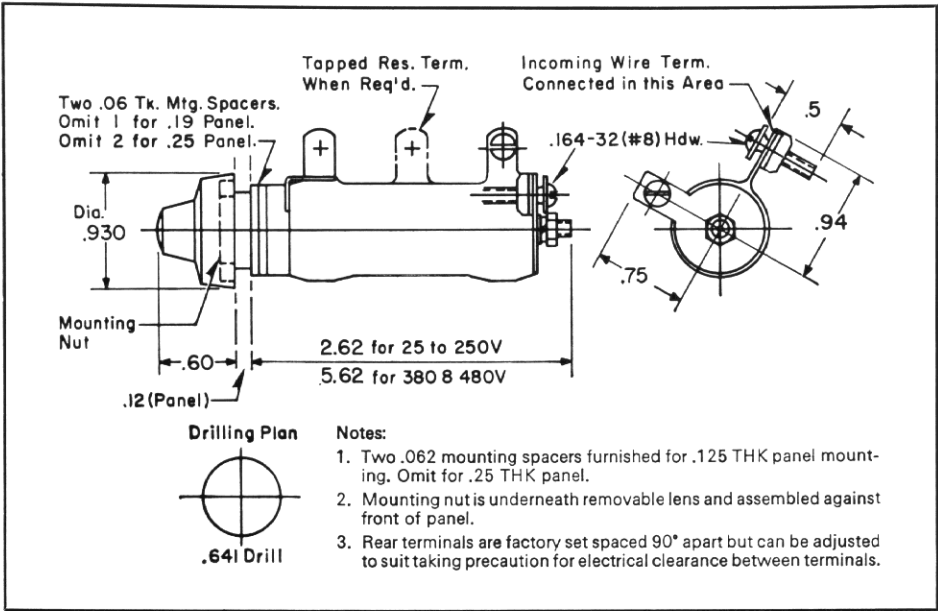
The Type EZC Minalite is a compact indicating lamp, designed for general indicating or signaling purposes on switchboards, control desks, etc. A complete lamp consists of a standard resistor, receptacle, a low drain telephone type slide base bulb, annular spacers, octagon mounting nut, lens and terminal hardware. The resistor, receptacle, bulb and lens are shipped assembled. The other parts are enclosed in an envelope. These two items are incorporated into a single package which is identified by a single style number for the required lamp.

The EZC indicating lamp is suitable for mounting on panels, up to and including 1/4 inch thickness, and are of a design that permits quick and easy installation. They are inserted from the rear of the panel, after unscrewing lens from resistor-receptacle assembly, through annular spacers as required for panel thickness. Tightening the octagon nut from the front of the panel mounts the assembly. The one-piece molded lens is then screwed on enclosing the lamp receptacle and the front mounting nut. Wiring connections are easily made at the rear end of the assembly.

The round receptacle and lens affords accurate alignment on the panel. The rear terminal, located on the axial tie rod, can be rotated 360 degrees and bent up 90 degrees to positions best suited to wiring requirements.



Dimensions in Inches



Lamp Data

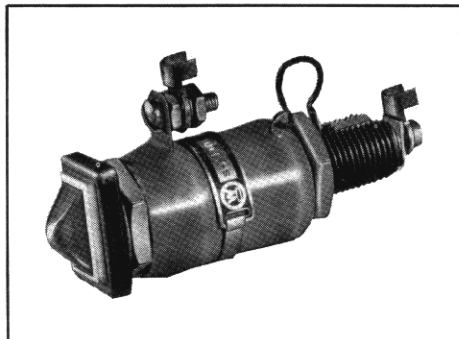
Service Voltage Ac - Dc	Style Numbers and Lens Color						Total Watts (Approx.) at Service Voltage
	Red	Green	White	Blue	Amber	Clear	
25	449D187G10	449D187G20	449D187G30	449D187G40	449D187G50	449D187G60	0.9
50	449D187G11	449D187G21	449D187G31	449D187G41	449D187G51	449D187G61	1.6
70	449D187G12	449D187G22	449D187G32	449D187G42	449D187G52	449D187G62	2.3
115	449D187G13	449D187G23	449D187G33	449D187G43	449D187G53	449D187G63	3.6
125	449D187G14	449D187G24	449D187G34	449D187G44	449D187G54	449D187G64	4.0
208	449D187G15	449D187G25	449D187G35	449D187G45	449D187G55	449D187G65	6.6
230	449D187G16	449D187G26	449D187G36	449D187G46	449D187G56	449D187G66	7.3
250	449D187G17	449D187G27	449D187G37	449D187G47	449D187G57	449D187G67	7.9
380	449D187G18	449D187G28	449D187G38	449D187G48	449D187G58	449D187G68	11.8
480	449D187G19	449D187G29	449D187G39	449D187G49	449D187G59	449D187G69	15.3
Assembled with Tapped Resistor for Bright-Dim Operation							Dim Bright
50 ♦	449D187G70	449D187G73	449D187G76	449D187G79	449D187G82	449D187G85	1.3 1.4
125 ♦	449D187G71	449D187G74	449D187G77	449D187G80	449D187G83	449D187G86	3.6 4.8
250 ♦	449D187G72	449D187G75	449D187G78	449D187G81	449D187G84	449D187G87	7.1 8.6
480 ♦	449D187G89	449D187G90					

Above styles complete with lens, mounting hardware, resistors and 24 volt .032/.038 ampere bulb.  
♦ With tapped resistor for "bright-dim" operation.



## Indicating Lamps

## Rectangular Minalite



Rectangular Minalite is a medium sized low-drain indicating lamp designed for extreme angular visibility and to provide the utmost in sturdiness, compactness and appearance. It is intended for general indicating or signal purposes on switchboards, control desks, etc.

Rectangular Minalite includes a rugged one-piece receptacle, made of Moldarta, a high-strength molded material, and is suitable for mounting on panels  $\frac{1}{2}$  to 2 inches thick. The molded receptacle is shaped to key into a square hole in the panel to provide accurate positioning. Where positioning is not mandatory, the same receptacle can be mounted by drilling a  $\frac{25}{32}$ -inch round hole. Pressure-type leaf spring contacts establish connections with the slide base telephone lamp having a rating of .032-.038 amperes, at 24 or 48 volts.

The rectangular lens assembly is held in place by means of phosphor bronze spring clips engaging in retaining grooves of the receptacle. A chromium metal holder encases the lens and spring clips. Rigid terminals for standard 10-32 hardware are provided. Resistors are available for bright-dim operation.

The lens provides visibility in all directions. The assembly using the 0.75-watt, 24-volt bulb is standard. A similar assembly using a 1.5-watt, 48-volt bulb is available for use in locations having a high level of illumination.

- Styles do not include lens or bulb. Select and specify as separate items from the following:

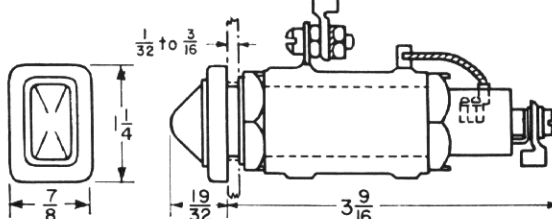
Red Lens	S# 1615 688
Green Lens	S# 1615 689
Clear Lens	S# 1615 690
Blue Lens	S# 1615 691
Amber Lens	S# 1615 692
Opalescent Lens	S# 1615 693
Bulb 24 Volt	S# 1124 156
Bulb 48 Volt	S# 1615 719

- ◆ Do not use for circuit breaker trip coil supervision. For this application a special bulb and series resistor are required. Refer to Westinghouse.

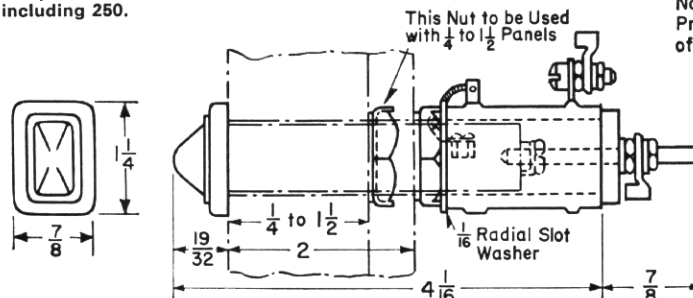
- ◆ With tapped resistor for "bright-dim" operation.

## Dimensions in Inches

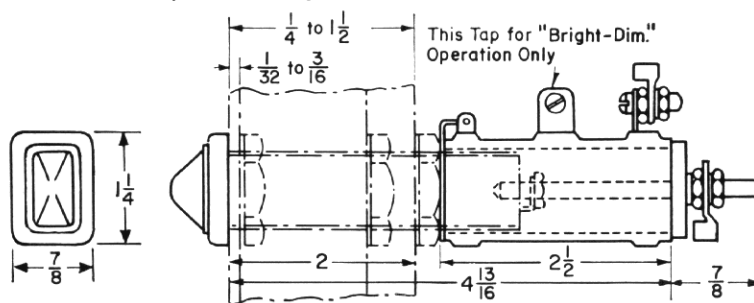
For panels  $\frac{1}{2}$  to  $\frac{3}{16}$ -inch thick, and for voltages up to and including 250.



For panels  $\frac{1}{4}$  to 2-inches thick, and for voltages up to and including 250.



380 and 480-volt receptacles, and all receptacles for "bright-dim" operation.  $\frac{1}{2}$  to 2-inch thick panel mounting.



## Drilling Plans



No. 1—Provides Positioning of Receptacle



No. 2—Does not Provide Positioning of Receptacle

## Lamp Data

Service Voltage Ac – Dc	Style Numbers *				Total Watts (Approx.) at Service Voltage
	For 24 Volt S #1124156 Bulb		For 48 Volt S #1615 719 Bulb		
	For Panels Up To ⅜" Thick	For Panels ¼" Up To 2" Thick	For Panels Up To ⅜" Thick	For Panels ¼" To 2" Thick	
25 ♦	1589 180	1589 180	.... .	.... .	0.9
50	1589 181	1589 193	1589 180	1589 180	1.6
70	1589 182	1589 194	1586 570	1615 757	2.3
115	1589 183	1589 195	1584 571	1615 758	3.6
125	1589 184	1589 196	1584 572	1615 759	4.0
208	1589 185	1589 197	1615 754	1615 760	6.7
230	1589 186	1589 198	1615 755	1615 761	7.4
250	1589 187	1589 199	1615 756	1615 762	8.0
380	1589 188	1589 188	1615 720	1615 720	12.0
480	1589 189	1589 189	1615 721	1615 721	15.5
50 ♦	1589 190	1589 190	.... .	.... .	Dim 1.3    Bright 1.4
125 ♦	1589 191	1589 191	1615 722	1615 722	3.6    4.8
250 ♦	1589 192	1589 192	1615 723	1615 723	7.1    8.6