



INSTALLATION • OPERATION • MAINTENANCE INSTRUCTIONS

TYPE JY CARRIER LOW PASS FILTER

APPLICATION

This unit is used in the carrier transmitter output circuit of 150-300 kc. Type JY equipment assemblies to attenuate harmonics which might otherwise interfere with other services.

DESCRIPTION

The components of this unit are mounted on the rear of a 1-3/4" wide (one panel unit) rack mounting panel which is suitable for mounting on the frame of a standard Type JY carrier cabinet. Figure 3 shows the outline and mounting dimensions. A metal shield covers the components on the rear of the panel. The filter is identified by S#1472271.

CHARACTERISTICS

This filter presents not more than 2 decibels attenuation to frequencies below 300 kilocycles, and better than 50 decibels to frequencies above 450 kilocycles. Figure 2 shows the frequency characteristic of the filter.

INSTALLATION

If this unit is part of an equipment assembly, it will be mounted and wired. There are no adjustments necessary to put this unit in operation.

If this unit is received as a separate unit, mount it on the rack as near as possible to

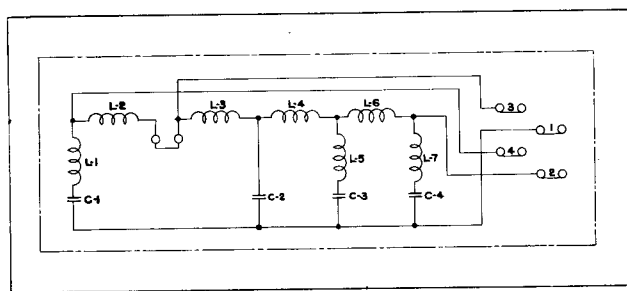


Fig. 1—Internal Schematic 2 Type JY Low Pass Carrier Filter.

the carrier transmitter. If necessary, it can be mounted on the rails in the rear of the cabinet. The output of the carrier transmitter (usually transmitter terminal CC-1) connects to filter terminal 4. The center conductor of the coaxial cable connects to terminal 2. Terminal 1 connects to ground. Terminal 3 is not used.

MAINTENANCE

The electrical parts in this unit are designed to give long, trouble-free service. No maintenance will normally be required, except for keeping the unit free of dust or dirt.

RENEWAL PARTS

When ordering renewal parts for this unit, include the following data from the nameplate:

1. The name of the unit.
2. The style or DL number.
3. The serial number.

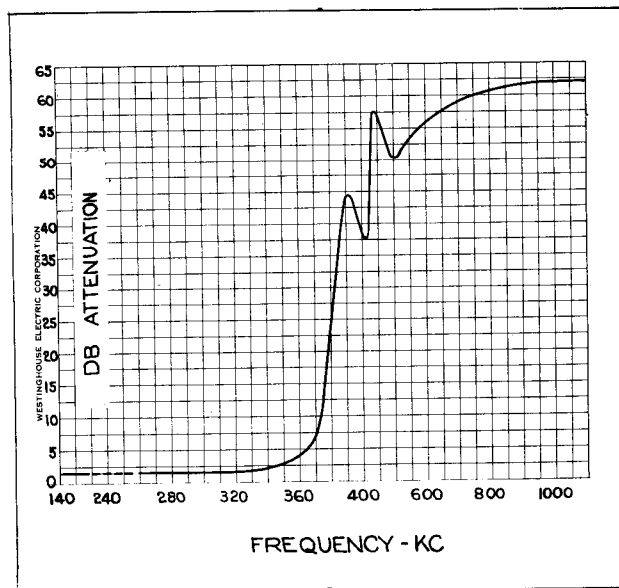


Fig. 2—Frequency Characteristic of Type JY Low Pass Carrier Filter.

TYPE JY CARRIER LOW PASS FILTER

ELECTRICAL PARTS LIST

Diagram Symbol	Req'd	Description	Rating
CAPACITORS			
C-1	1	Shunt Capacitor	.0043 MFD, 2500V.d.c.
C-2	1	" "	.015 MFD, 600 V.d.c.
C-3	1	" "	.0047 MFD, 2500V.d.c.
C-4	1	" "	.0043 MFD, 2500 V.d.c.

INDUCTANCES

L-1	1	Shunt inductance	28 MH
L-2	1	Series "	15.75 "
L-3	1	" "	26.75 "
L-4	1	" "	35.28 "
L-5	1	Shunt "	36.1 "
L-6	1	Series "	24.28 "
L-7	1	Shunt "	28

From T-7619776

