

Westinghouse

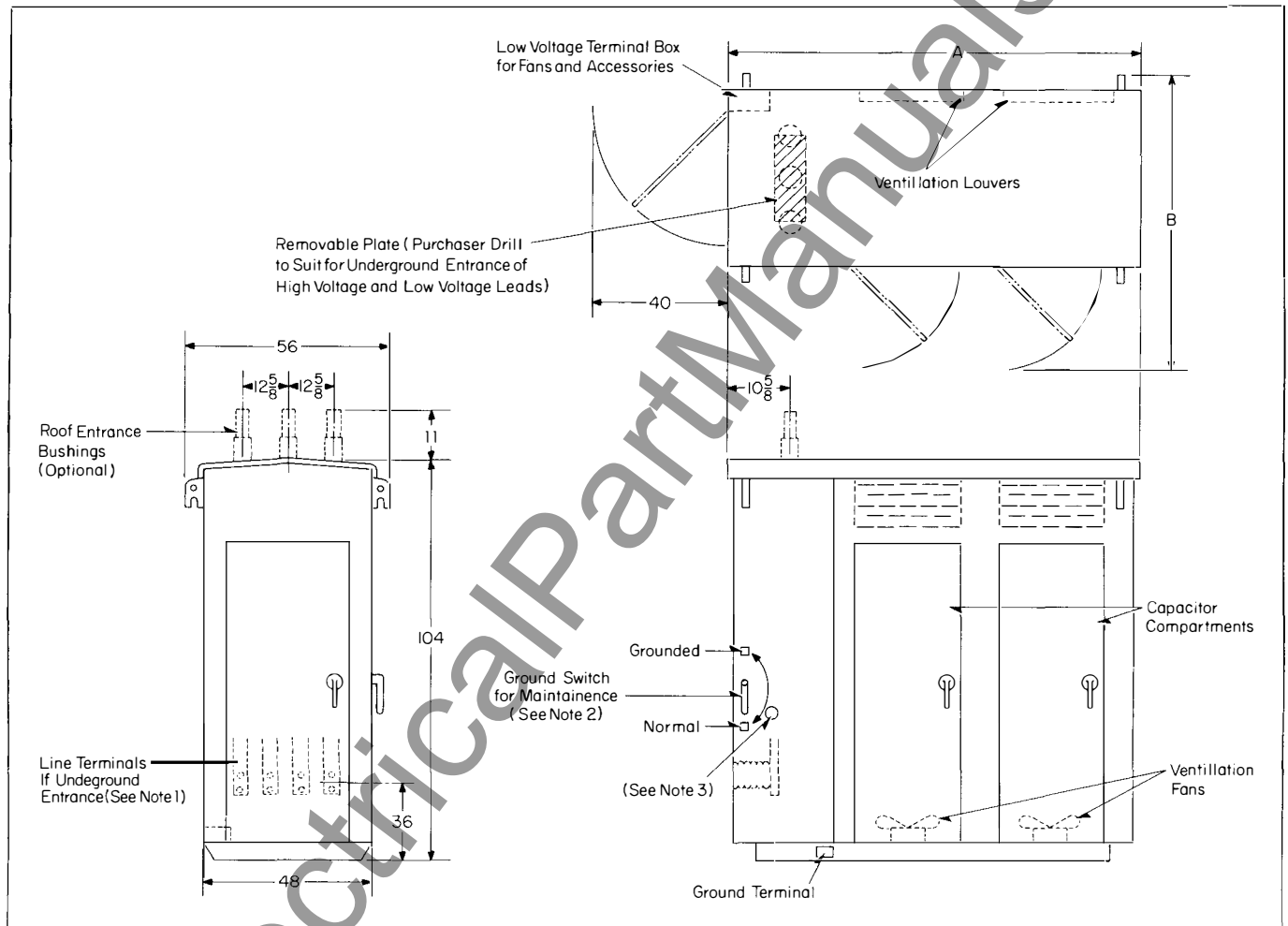


Metal Enclosed Dyna-Vac Capacitor Equipment

Indoor or Outdoor, 2400 to 14400 volts
1200 to 10800 kvac, 3 phase, 60 Hz

Standard Unswitched Equipment (Type 1)

Approximate dimensions in inches (not for construction purposes)



Line No.	No. of Cap. Units	Dimensions A B	No. of Cap. Doors	Weight Lbs. ①
1	12	57 76	1	1200
2	18	73 92	1	1400
3	30	105 84	2	1800
4	42	137 84	3	2200
5	48	157 92	3	2500
6	60	189 84	4	2900
7	72	221 84	5	3300

① Does not include capacitors, fuses or accessories.

Note 1: Supplied with terminals suitable for 4/0 to 500 MCM cable

Note 2: Ground switch is mechanically interlocked with capacitor compartment doors

Note 3: Location of kirk key interlock when required

Note 4: All door handles have provision for padlock

Metal Enclosed Dyna-Vac Capacitor Equipment

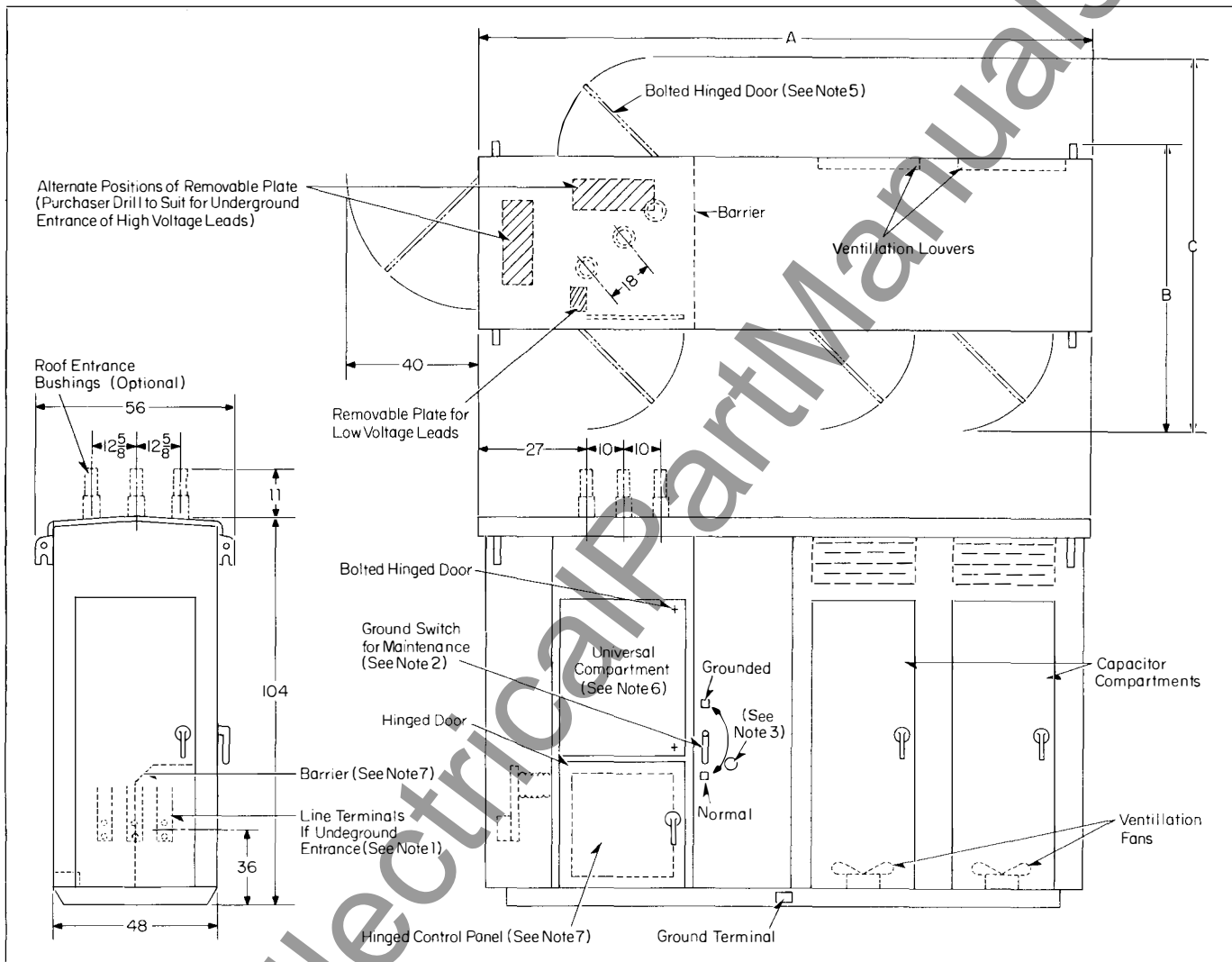
Indoor or Outdoor, 2400 to 14400 volts
1200 to 10800 kvac, 3 phase, 60 Hz

Westinghouse



Standard Switched Equipment (Type II)

Approximate dimensions in inches (not for construction purposes)



Line No.	No. of Cap. Units	Dimensions			No. of Cap. Doors	Weight Lbs. ①
		A	B	C		
1	12	111	92	128	1	2200
2	18	127	92	128	1	2400
3	30	159	92	128	2	2800
4	42	191	92	128	3	3200
5	48	211	92	128	3	3500
6	60	243	92	128	4	3900
7	72	275	92	128	5	4300

① Does not include capacitors, fuses or accessories

Note 1: Supplied with terminals suitable for 4/0 to 500 MCM cable

Note 2: Ground switch is mechanically interlocked with capacitor compartment doors

Note 3: Location of kirk key interlock when required

Note 4: All door handles have provision for padlock

Note 5: Access not necessary but can be used for convenience if space permits

Note 6: Universal compartment accepts standard switches or other protective devices

Note 7: Control compartment with hinged panel and barrier supplied only when ordered

November, 1973

New Information

E, D, C/2001, 2002/DS

Westinghouse

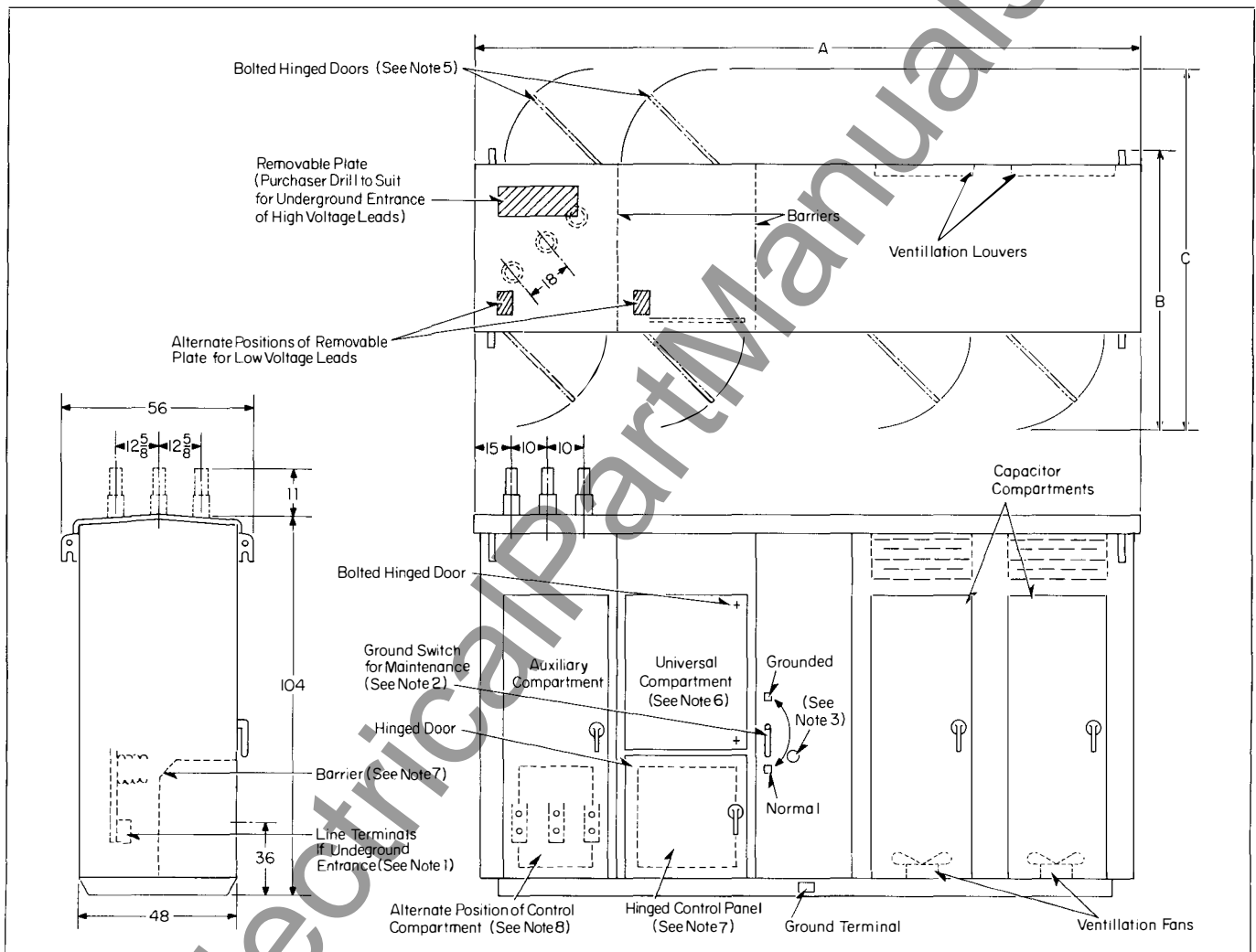


Metal Enclosed Dyna-Vac Capacitor Equipment

Indoor or Outdoor 2400 to 14400 volts
1200 to 10800 kvac, 2 phase, 60 Hz

Standard Switched Equipment with auxiliary entrance compartment (Type III)

Approximate dimensions in inches (not for construction purposes)



Line No.	No. of Cap. Units	Dimensions A B C	No. of Cap. Doors	Weight Lbs. ①
1	12	146 92 128	1	3100
2	18	162 92 128	1	3300
3	20	194 92 128	2	3700
4	42	226 92 128	3	4100
5	48	246 92 128	3	4400
6	60	278 92 128	4	4800
7	72	310 92 128	5	5200

① Does not include capacitors, fuses or accessories

Note 1: Supplied with terminals suitable for 4/0 to 500 MCM cable

Note 2: Ground switch is mechanically interlocked with capacitor compartment doors

Note 3: Location of kirk key interlock when required

Note 4: All door handles have provision for padlock

Note 5: Access not necessary but can be used for convenience if space permits

Note 6: Universal compartment accepts standard switches or other protective devices

Note 7: Control compartment with hinged panel and barrier supplied only when ordered

Note 8: If alternate control panel location is selected, single door of auxiliary compartment and double doors of universal compartment will be interchanged. Lower door of double door must be opened first.

November, 1973

New Information

E, D, C/2001, 2002/DS

www.ElectricalPartManuals.com