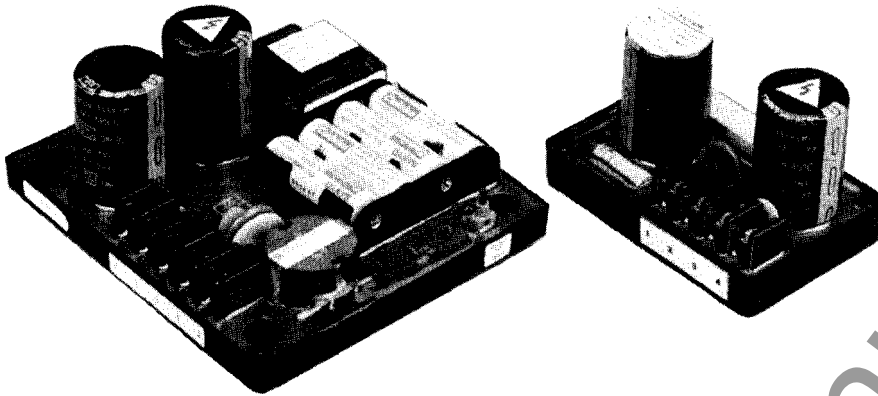


## CLASS 200 EQUIPMENT ESD-201/ESD-202 ENERGY STORAGE DEVICES



The Basler Electric energy storage devices are an economical alternative to existing energy storage devices. They can be used when a station battery source is not available for circuit breaker tripping. The ESD-201 converts an ac input into dc and stores sufficient energy to trip the circuit breaker for up to 72 hours after the ac is removed. The ESD-202 converts an AC input and stores sufficient energy to trip the circuit breaker for at least 12 seconds.

### FEATURES:

- Converts an ac input into dc for circuit breaker tripping power.
- The ESD-201 tripping power is maintained for up to 72 hours after the loss of the ac input.
- The ESD-202 maintains tripping power for 12 seconds.
- LED indicator to indicate a sufficient charge is available.
- Compact package.
- Economical design.
- One unit for 120 or 240 Vac inputs.
- CSA-C22-2 approved.
- UL 508 approved.
- 18 month warranty.

### FEATURES

this page

### DESCRIPTION AND SPECIFICATIONS

page 2

### ACCESSORIES AND INTERCONNECT

page 2

### DIMENSIONS

page 3

### INSTRUCTION MANUAL

Reference

Publication Number

9 1106 00 991 (ESD-201)

9 2905 00 990 (ESD-202)

**B** Basler Electric

ROUTE 143, BOX 269 HIGHLAND, ILLINOIS U.S.A. 62249 PHONE 618-654-2341 FAX 618-654-2351

UJO-2  
2-97

DESCRIPTION:

ESD-201

Power input to the Energy Storage Device is 230 Vac. This input is rectified and used to charge the energy storage capacitor to approximately 330 Vdc. A nickel cadmium battery source is also charged from this ac source. As long as the ac input is applied, the output capacitor and the battery continue to be charged in this manner. If the ac fails, a battery-powered oscillator circuit and an associated step-up transformer act as the capacitor charging source. Energy for breaker tripping is maintained for as long as 72 hours after a loss of ac voltage.

ESD-202

Power input to the energy storage device is 240VAC. This input is rectified and used to charge the energy storage capacitors to approximately 330VDC. As long as the input is applied, this voltage will be maintained. Once the ac input is removed, the energy storage device will maintain a sufficient charge for a minimum of 12 seconds.

SPECIFICATIONS:

ESD-201

OUTPUT POWER:

- Voltage: 330-450 Vdc
- Energy: 27 Joules minimum at 330 Vdc
- 36 Joules minimum at 380 Vdc
- 50 Joules minimum at 450 Vdc
- This output is maintained for a period of 72 hours after the internal battery is fully charged.

CHARGING RATE:Varies non-linearly from 90 Volts/cycle down to 2.8 Volts/min as cap approaches 90% full charge after breaker trip event.

ESD-201, cont.

INPUT POWER:

- Voltage: 120 or 240 V ±10%
- Frequency: 50/60 Hz
- Phase: Single
- Burden: 4.0 VA maximum

POWER DISSIPATED: 5.0 Watts.

STORAGE TEMPERATURE RANGE: -40°C (-40°F) to +90°C (+194°F).

OPERATING TEMPERATURE RANGE: -25°C (-13°F) to +65°C (+149°F).

WEIGHT: 1 lb. 5 oz. (0.582 kg.)

ESD-202

OUTPUT POWER:

- Voltage: 191-339 Vdc
- Energy: 9.1 Joules minimum at 191 Vdc
- 21.6 Joules minimum at 295 Vdc
- 24.2 Joules minimum at 311 Vdc
- 28.7 Joules minimum at 339 Vdc
- This output is maintained for a minimum of 12 seconds or until a load is applied.

INPUT POWER:

- Voltage: 208 or 240 V ±10%
- Frequency:50/60 Hz
- Phase: Single
- Burden: 10 VA maximum (after ESD-202 is fully charged)

POWER DISSIPATED: 2.0 Watts.

STORAGE TEMPERATURE RANGE: -40°C (-40°F) to +85°C (+185°F).

OPERATING TEMPERATURE RANGE: -25°C (-13°F) to +65°C (+149°F).

WEIGHT: .55 lb. (.25 kg)

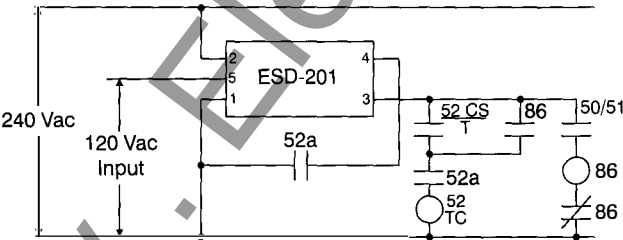


FIGURE 1 - ESD-201 INTERCONNECTION DIAGRAM

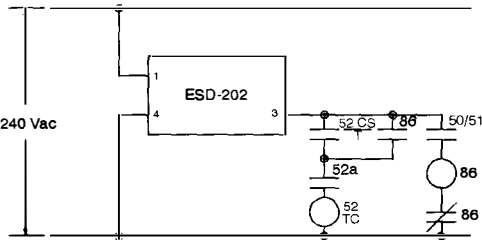


FIGURE 2 - ESD-202 INTERCONNECTION DIAGRAM

LEGEND  
52 Power Circuit Breaker  
a Breaker Auxiliary Contact  
TC Breaker Trip Coil  
86 Lockout Relay  
50/51 Overcurrent Relay  
CS/T Control Switch, Trip

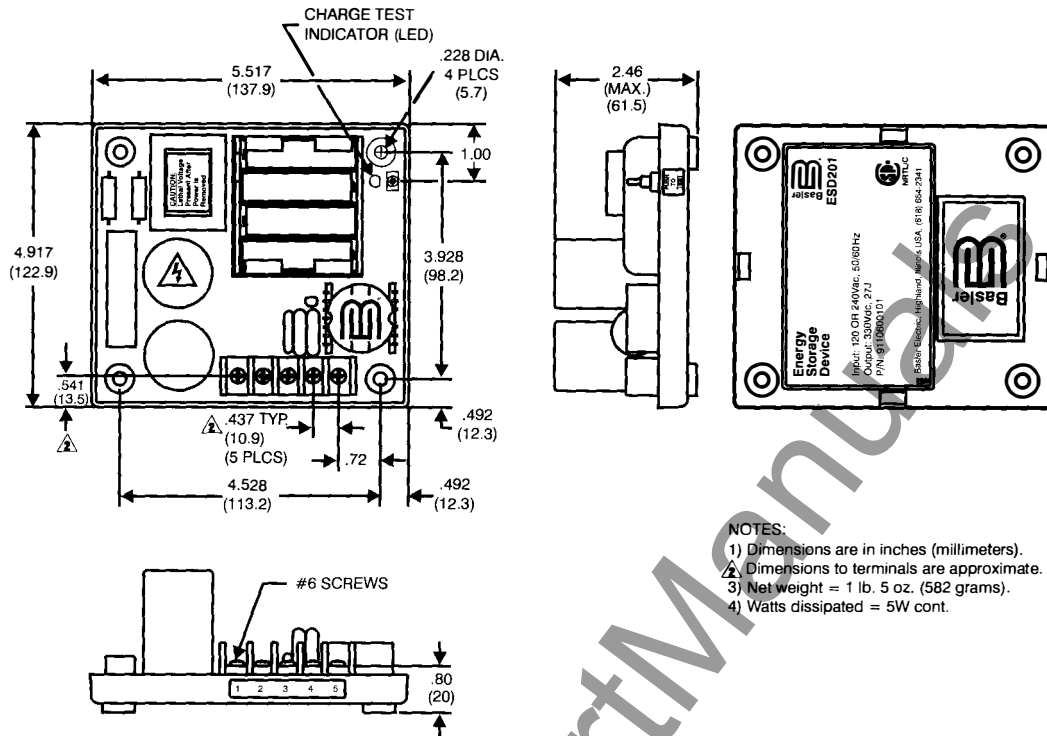


FIGURE 3 - ESD-201 DIMENSION DRAWING

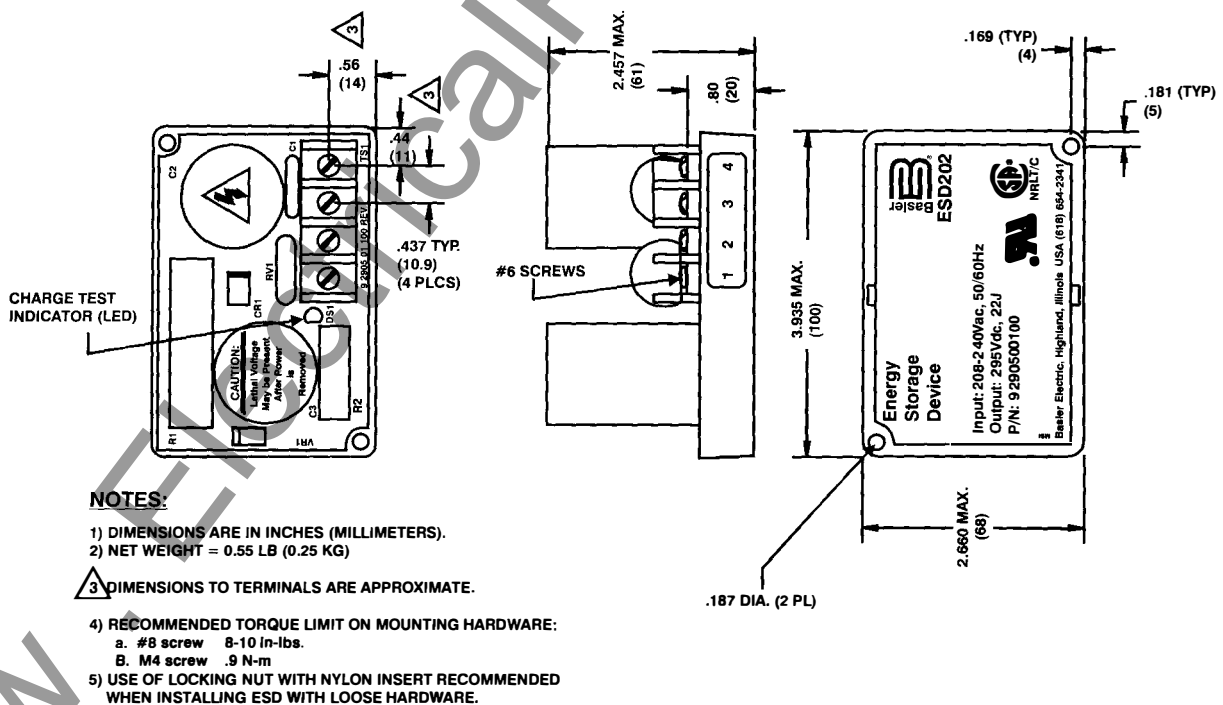


FIGURE 4 - ESD-202 DIMENSION DRAWING

NOTES: 1. Dimensions in parentheses are in inches (millimeters).  
2. All drawings and data subject to change without notice.

## ACCESSORY ITEM:

**CONVERSION MOUNTING PLATE:** An adaptive mounting plate is available for retrofit applications for mounting of an ESD-201 in place of existing ESD products; order Basler Electric part number 9 1106 00 009. See Figure 5 below.

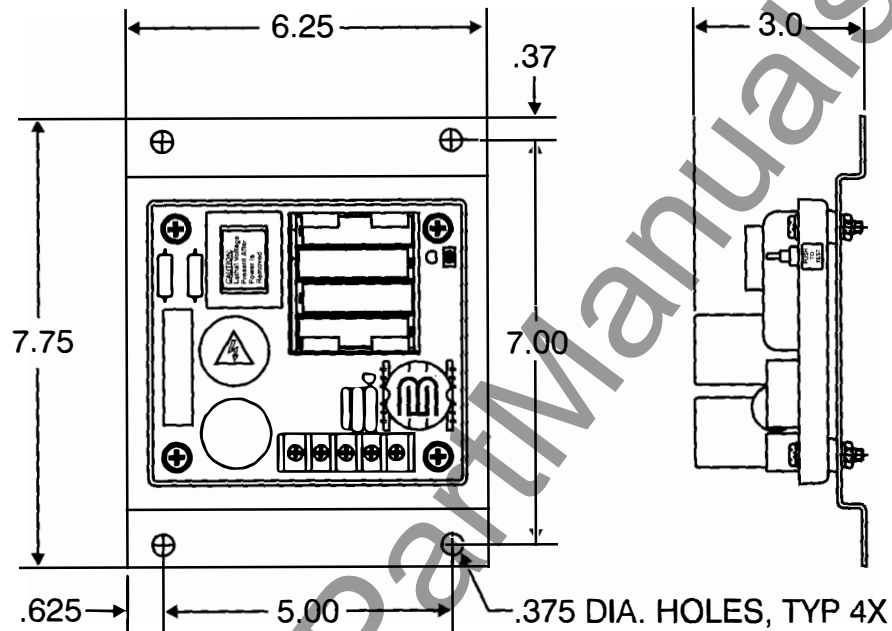


FIGURE 5 - DIMENSION DRAWING, OPTIONAL CONVERSION MOUNTING PLATE  
FOR REPLACING BASLER MODEL ESD-200

**B Basler Electric**



ROUTE 143, BOX 269, HIGHLAND, ILLINOIS U.S.A. 62249  
PHONE 618-654-2341 FAX 618-654-2351

P.A.E. Les Pins, 67319 Wasselonne Cedex FRANCE  
PHONE (33-3-88) 87-1010 FAX (33-3-88) 87-0808

<http://www.basler.com>, [info@basler.com](mailto:info@basler.com)

Printed in U.S.A.