

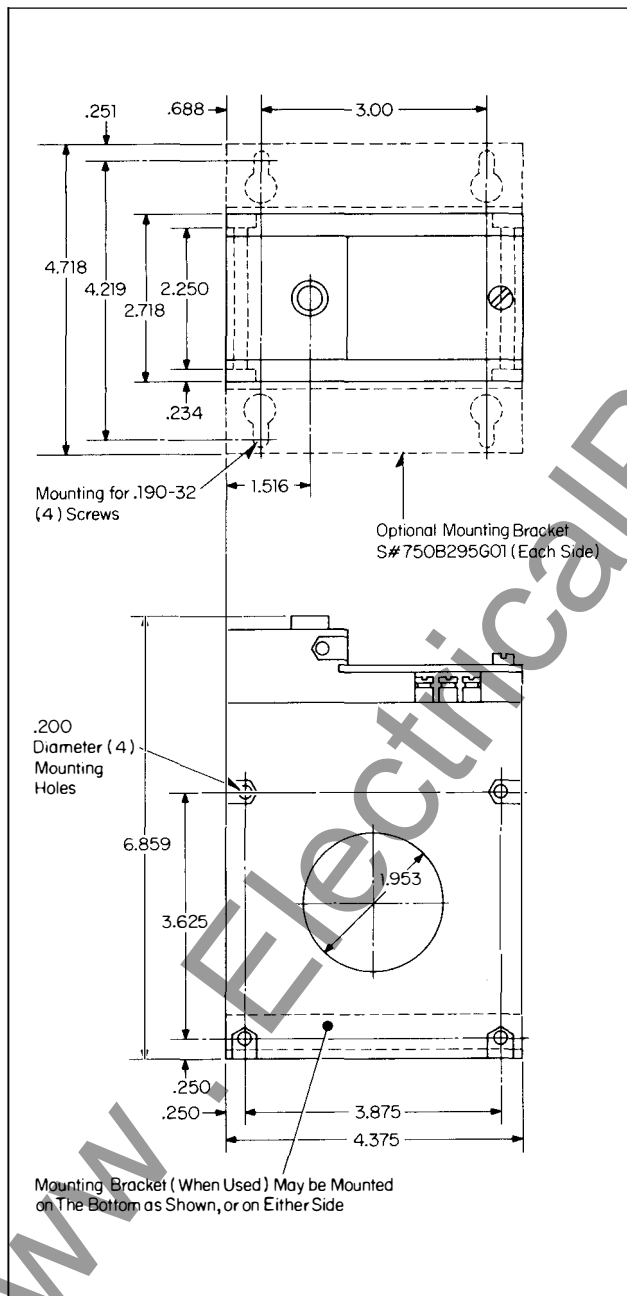


September, 1977
New Information
Mailed to: E, D, C/1901, 1908/DB

600 Volts, 60/50 Hertz Maximum

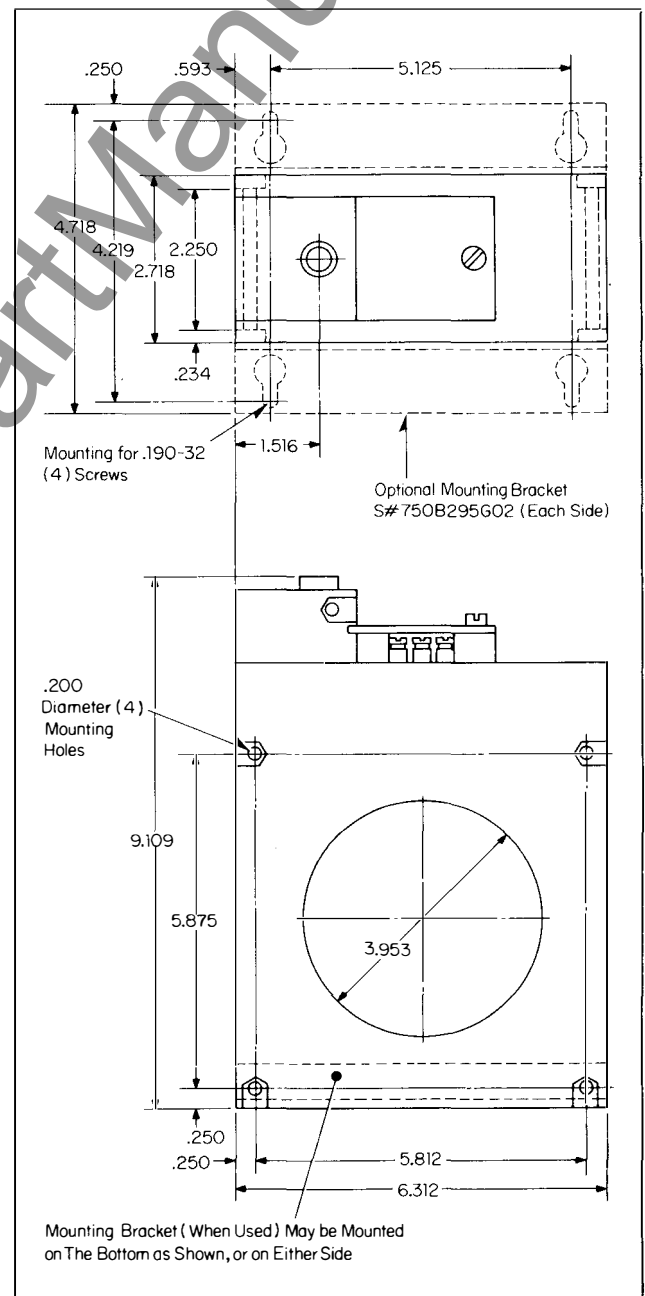
Type GFM Ground Fault Protection Devices

Outline and Mounting Dimensions Types GFM-2 and GFM-2A



Reproduced from Drawing 5069A61

Types GFM-4 and GFM-4A



Reproduced from Drawing 5069A63

