



POSITION SWITCH KIT

For AKR Substructure

Installation Instructions for AKR Substructures:

| AKR Circuit Breakers | Depth | Draw-Out Substructures |
|----------------------|-------|------------------------|
| AKR75 | 33 in | TAK8SS02 |
| AKR75H | 33 in | TAK8SSH2 |
| AKR100 | 33 in | TAK9SS02 |

CAUTION: To avoid electrical hazard, make sure primary and secondary circuits are not energized while working in the compartment.

RATING 10 AMP-600VAC

| CONTACT CONDITION | STAGE 1 | | STAGE 2 | | STAGE 3 | |
|-------------------|---------|-----|---------|-------|---------|-------|
| NC | 1-2 | 5-6 | 9-10 | 13-14 | 17-18 | 21-22 |
| NO | 3-4 | 7-8 | 11-12 | 15-16 | 19-20 | 23-24 |

Note: Can be mounted in conjunction with Shutter Kit 0317A8901G1.

INSTRUCTIONS

Notch support as shown in Figure 3 if not to print. Install the unit as shown in Figure 1 with two thread forming screws. Make electrical connections as desired (1/4" wire strip required). The table shows the unactuated switching sequence.

FIGURE 1

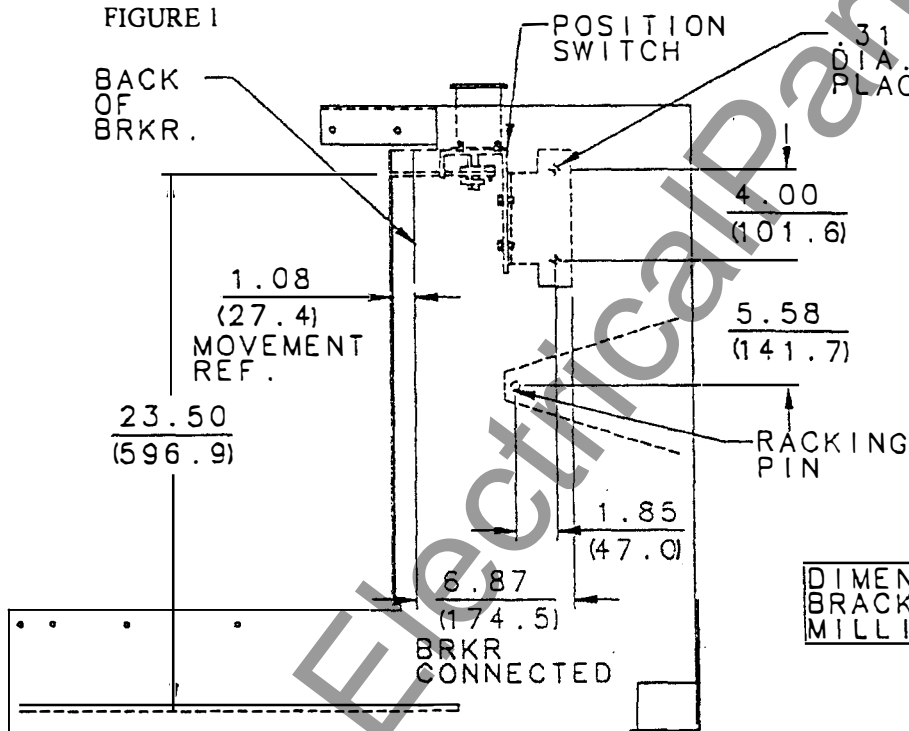


FIGURE 2

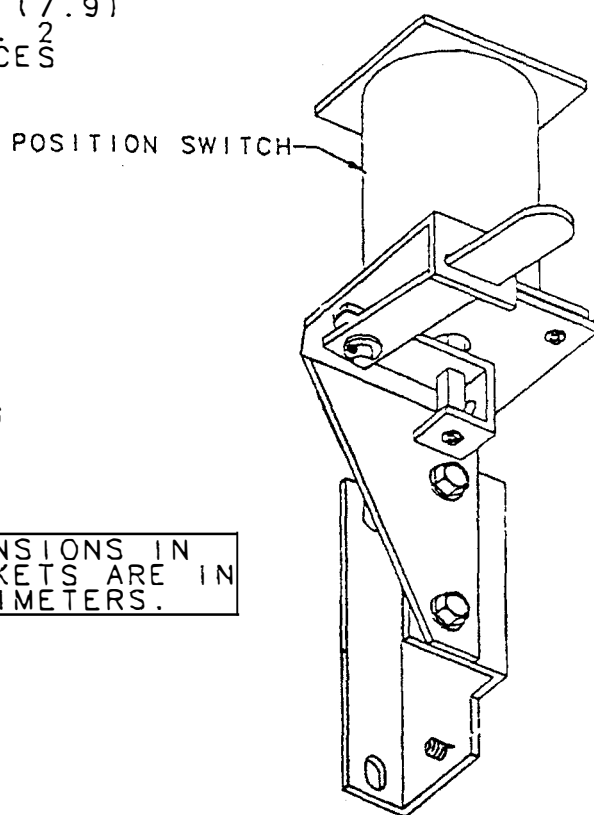
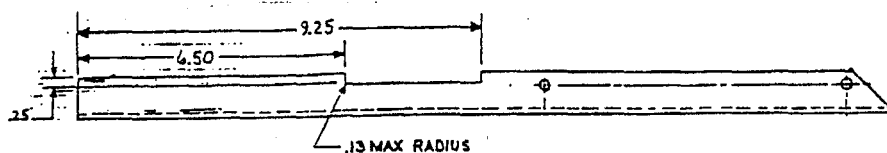


FIGURE 3

Support rail on top of Substructure may need to be notched per print to allow clearance for position switch.



These instructions do not purport to cover all details or variations in equipment nor to provide for every possible contingency to be met in connection with installation, operation or maintenance. Should further information be desired or should particular problems arise which are not covered sufficiently for the purchaser's purposes, the matter should be referred to the General Electric Company.

www.ElectricalPartManuals.com