

GENERAL ELECTRIC

RENEWAL PARTS

AIR CIRCUIT BREAKERS

600-Volts A-c 250-Volts D-c

Type	Amperes
AL-2-50	15 to 1600
†AL-2-75	2000 to 3000
†AL-2-100	4000 to 10000

NOTE:—Parts which are recommended for normal maintenance are identified by both reference number and catalog number. Other parts are identified by reference number only.

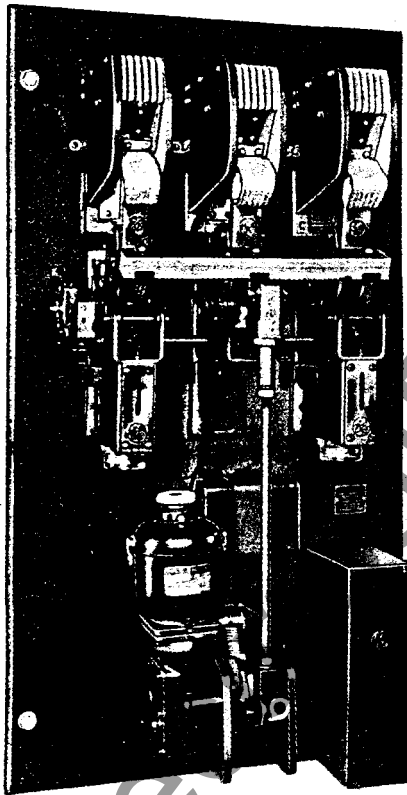


FIG. 1
Type AL-2-50 Motor Operated Air Circuit Breaker

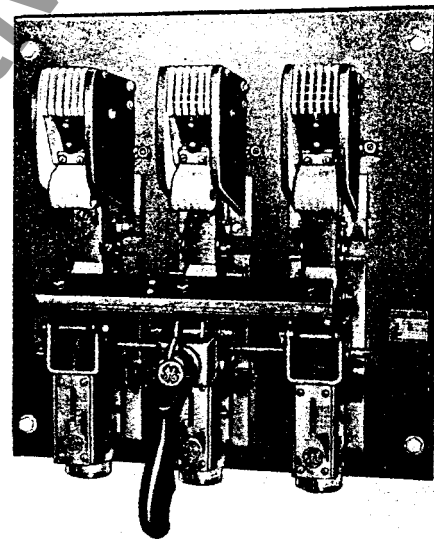


FIG. 2
Type AL-2-50 Manually Operated Air Circuit Breaker

ORDERING INSTRUCTIONS

1. Always specify the complete nameplate data of the breaker for which the part is required.
2. Specify the quantity, description, catalog number (if listed), reference number, and this bulletin number.
3. See other instructions on pages 2, 4, 7, and 8.
4. Standard hardware such as screws, bolts, nuts, washers, etc., is not listed in this bulletin. Such items should be purchased locally.

† For parts for Type AL-2-75/100 Breakers rated 750-volts d-c, refer inquiry to the nearest office of the General Electric Company.

*Supersedes GEG-3405 and GEF-2383A.

NOTE:—Data subject to change without notice

TYPE AL-2 AIR CIRCUIT BREAKERS
TYPE AL-2-50 AIR CIRCUIT BREAKERS

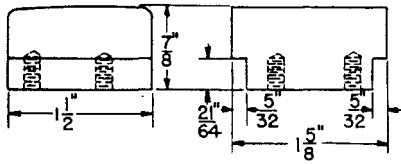


FIG. 3. Stationary Arcing Contact, Early Design

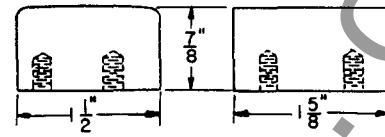


FIG. 4. Movable Arcing Contact, Early Design

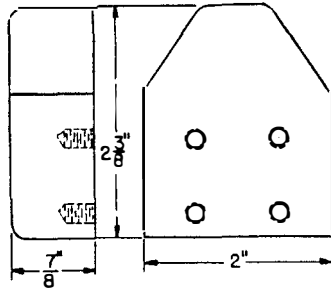


FIG. 5. Stationary Arcing Contact, Early Design

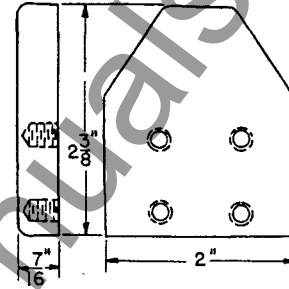


FIG. 6. Movable Arcing Contact, Early Design

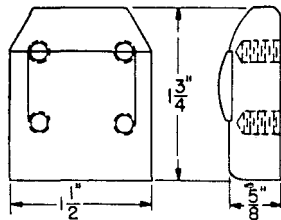


FIG. 7. Stationary Arcing Contact, Modern Design

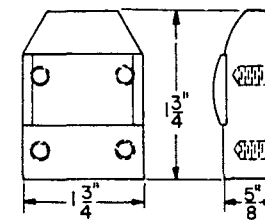


FIG. 8. Movable Arcing Contact, Modern Design

RECOMMENDED RENEWAL PARTS

1. The parts of the Type AL-2-50 breakers which are recommended for normal maintenance consist of the *arcing contacts* listed below.
2. Because of the fact that the arcing contacts which were furnished in the earlier designs of these breakers differ from those which are included in the current design, all are listed and illustrated.
3. Definitely ascertain that the contacts ordered correspond to those which are to be replaced, by comparing with Fig. 2 to 7 inclusive.

Ref. No.	Fig. No.	No. Required Per Pole of Breaker	Cat. No.	Description
6	3	1	6076735P2	Stationary Arcing Contact
6A	4	1	6144051	Movable Arcing Contact
6	5	1	6076694P2	Stationary Arcing Contact
6A	6	1	6076694P1	Movable Arcing Contact
6	7	1	6172268G1	Stationary Arcing Contact
6A	8	1	6172268G2	Movable Arcing Contact

(FOR OTHER PARTS SEE OPPOSITE PAGE)

TYPE AL-2 AIR CIRCUIT BREAKERS

GEF-2383B

TYPE AL-2-50 AIR CIRCUIT BREAKERS

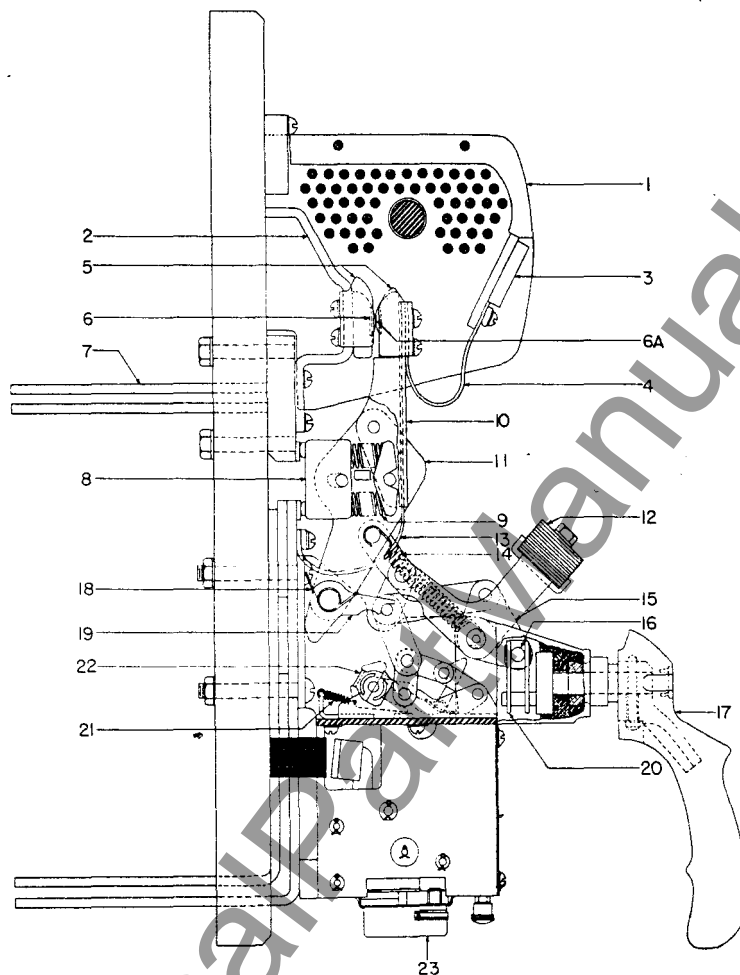


FIG. 9 † Outline of a Pole of the Type AL-2-50 Manually Operated Air Circuit Breaker

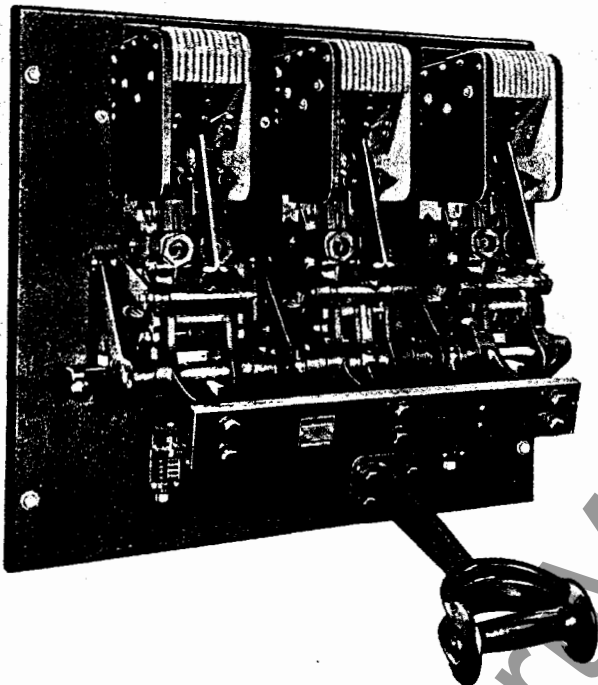
The following parts are seldom required and are therefore not cataloged in this bulletin. They may be ordered, however, as instructed on Page 1.

Ref. No.	Description	Ref. No.	Description	Ref. No.	Description
1	Arc quencher	9	Contact springs	16	Trunnion
2	Rear arc runner	10	Lever	† 17	Handle
3	Front arc runner	11	Contact lever	18	Bearing pin spring
4	Flexible connection	12	Cross bar	19	Prop
5	Blowout magnets	13	Flexible connection	20	Connecting links
7	Upper stud	14	Opening spring	21	Resetting spring
8	Bridging contact	15	Closing crank	22	Latching mechanism
				23	Dashpot

† With the exception of the handle, parts are common to the motor operated. See Page 5 for Motor-mechanism Parts.

TYPE AL-2 AIR CIRCUIT BREAKERS
 TYPES AL-2-75 AND AL-2-100 AIR CIRCUIT BREAKERS

RECOMMENDED RENEWAL PARTS



1. The parts of the Types AL-2-75 and AL-2-100 breakers which are recommended for normal maintenance consist of the arcing contacts listed below.
2. Because of the fact that the arcing contacts which were furnished in the earlier design of these breakers differ from those which are included in the current design, both sets are listed and illustrated.
3. Definitely ascertain that the contacts ordered correspond to those which are to be replaced by comparing with Figs. 11 to 13 inclusive.

NUMBER OF CONTACTS

BREAKER RATING IN AMPERES		No. of Sets of Arcing Contacts Required per Pole
A-c	D-c	
2000 to 4000	2000 to 6000	1
5000 to 6000	8000 to 10000	2

FIG. 10. Type AL-2-75 Manually Operated Air Circuit Breaker

Fig. No.	Ref. No.	Cat. No.	Description
11	36	6070599P2	Stationary Arcing Contact
11	36A	6070599P2	Movable Arcing Contact
12	36	6172281G1	Stationary Arcing Contact
13	36A	6172282G1	Movable Arcing Contact

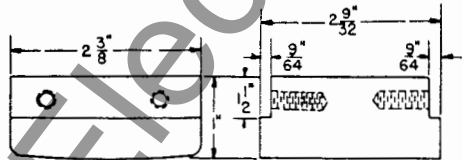


FIG. 11. Either Stationary or Movable Arcing Contact, Early Design

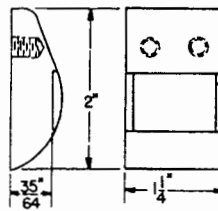


FIG. 12. Stationary Arcing Contact, Modern Design

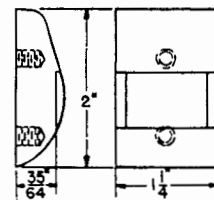


FIG. 13. Movable Arcing Contact, Modern Design

(FOR OTHER PARTS SEE OPPOSITE PAGE)

TYPE AL-2 AIR CIRCUIT BREAKERS

TYPES AL-2-75 AND AL-2-100 AIR CIRCUIT BREAKERS

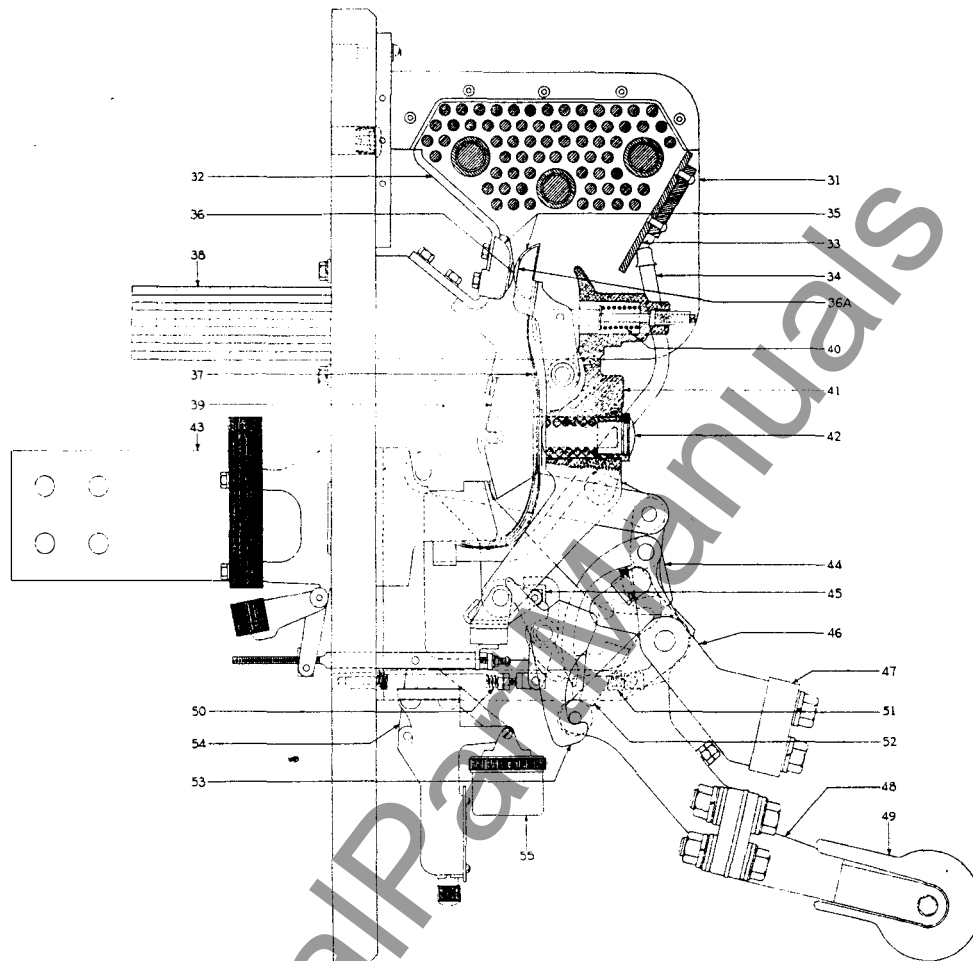


FIG. 14

† Outline of a Pole of a Type AL-2-75/100 Manually Operated Air Circuit Breaker

The following parts are seldom required and are therefore not cataloged in this bulletin. They may be ordered, however, as instructed on Page 1.

Ref. No.	Description	Ref. No.	Description	Ref. No.	Description
31	Arc quencher	40	Arcing contact spring	† 48	Handle lever
32	Rear arc runner	41	Contact lever	† 49	Spade handle
33	Front arc runner	42	Bridge contact spring	50	Trip spring
34	Flexible connection	43	Lower stud	51	Opening spring
35	Blowout magnets	44	Catch	52	Closing latch
37	Flexible connection	45	Trip latch	53	Holding latch
38	Upper stud	46	Toggle lever	54	Overcurrent trip device
39	Bridging contact	47	Cross bar	55	Dashpot

† With the exception of the handle, parts are common to the motor operated. See Page 6 for Motor-mechanism Parts.

TYPE AL-2 AIR CIRCUIT BREAKERS

PARTS FOR MOTOR MECHANISMS

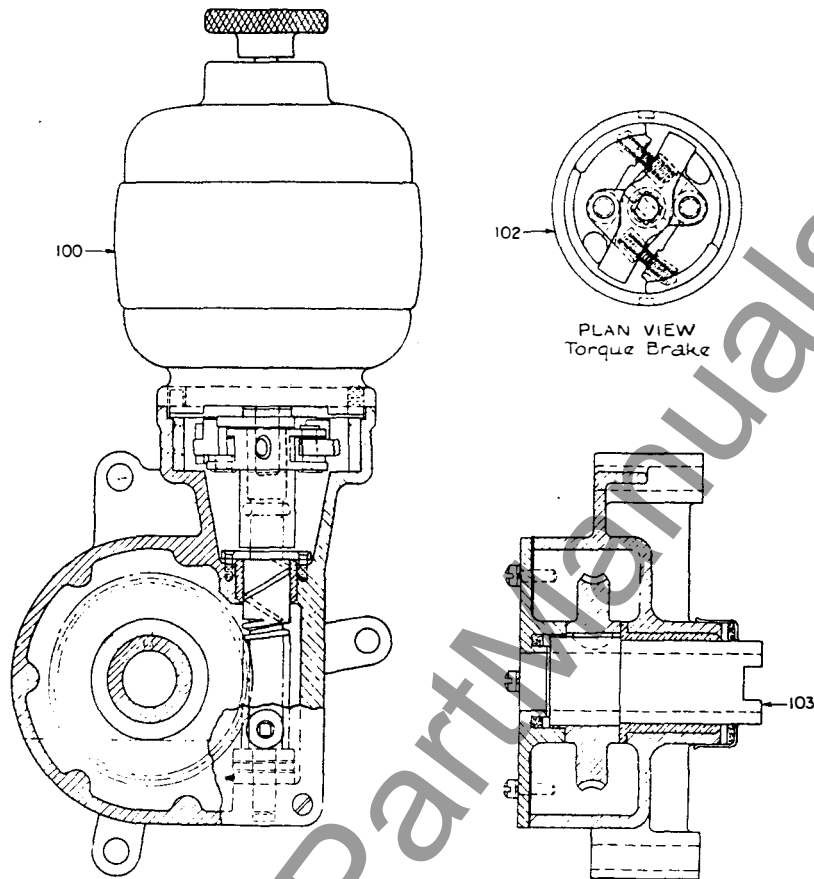


FIG. 15

Outlines of Motor, Torque Brake, and Gear Reducer

The following parts constitute those which are recommended for normal maintenance.

Ref. No.	Cat. No.	Description
△100A	5855005ACP1	Ball bearing for motor (Ref. No. 100)
△100B	5081300AB1	Brush holder for motor (Ref. No. 100)
△100C	5052405AA-7	Carbon brush for motor (Ref. No. 100)
△101		Insulated screw cap (Ref. No. 100)

The following parts are seldom required and are therefore not cataloged in this bulletin. They may be ordered however, as instructed on Page 1.

Ref. No.	Description
100	Motor
102	Torque brake complete
103	Gear reducer complete
△104	Motor cutoff switch

△Not illustrated.

TYPE AL-2 AIR CIRCUIT BREAKERS
PARTS FOR ACCESSORIES

The following parts are seldom required and are therefore not cataloged in this bulletin. They may be ordered, however, as instructed on Page 1.

Ref. No.	Description
110	Operating coil for shunt trip device
111	Reset spring for shunt trip device
112	Operating coil for undervoltage device
113	Barrier and contacts for auxiliary switch for motor operated breakers (<i>always specify the contact number as identified in the switch</i>)

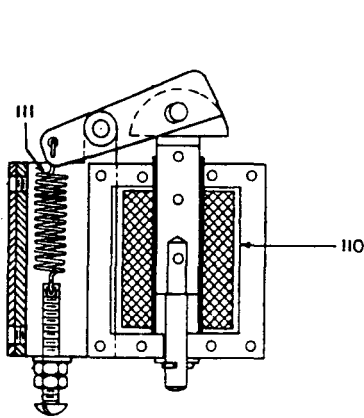


FIG. 16
Shunt Trip Device

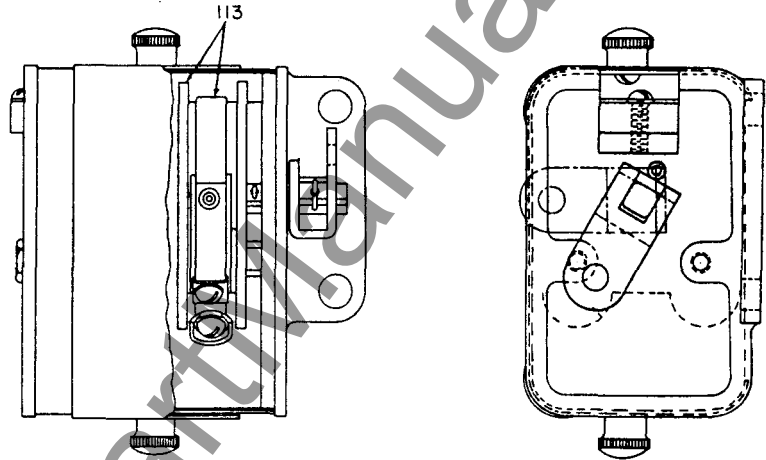


FIG. 18
Auxiliary Switch for Type AL-2 Motor Operated
Air Circuit Breakers

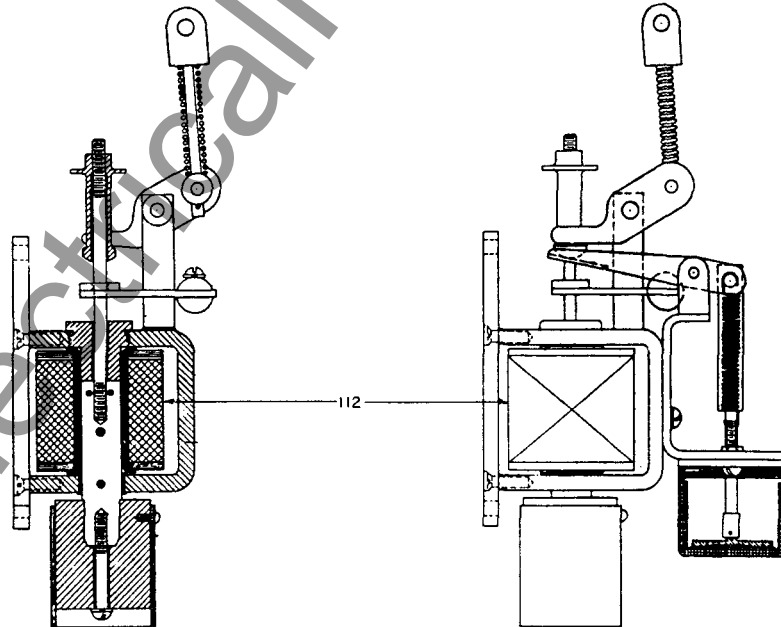


FIG. 17

Instantaneous Undervoltage
Trip Device

Time Undervoltage
Trip Device

TYPE AL-2 AIR CIRCUIT BREAKERS
PARTS FOR ACCESSORIES (CONT'D)
CLOSING RELAY FOR MOTOR OPERATED BREAKERS

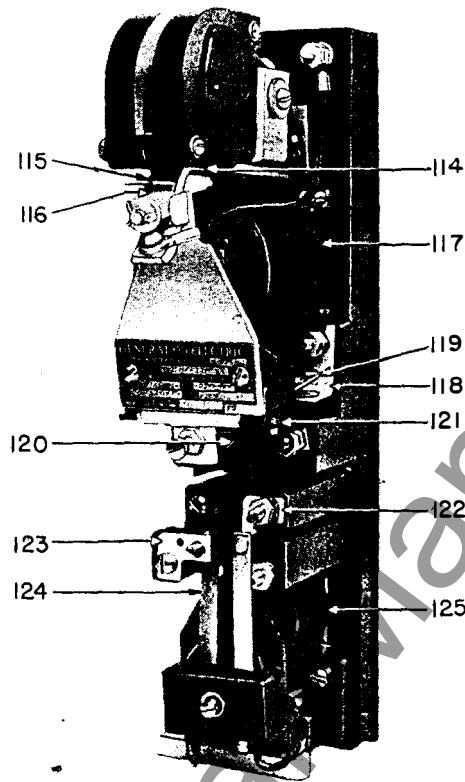


FIG. 19

Closing Relay for Type AL-2 Motor Operated Air Circuit Breakers

The following parts constitute those which are recommended for normal maintenance.

Ref. No.	Cat. No.	Description
114	1416332	Motor relay stationary contact
115	2455288	Motor relay movable contact
117	†	Motor relay operating coil
125	†	Cutoff relay operating coil

The following parts are seldom required and are therefore not cataloged in this bulletin. They may be ordered, however, as instructed on Page 1.

Ref. No.	Description	Ref. No.	Description
116	Movable contact spring	121	Secondary contact spring
118	Secondary stationary contact	122	Stationary contact—right
119	Secondary movable contact	123	Stationary contact—left
120	Armature spring	124	Cutoff relay movable contact

†Specify the complete nameplate data of the relay and Reference No.

APPARATUS DEPARTMENT, GENERAL ELECTRIC COMPANY, SCHENECTADY, N. Y.