



SWITCHGEAR

RENEWAL PARTS ORDERING GUIDE

**TYPE FA-350A, 5-KV
AIR MAGNETIC CIRCUIT BREAKERS
WITH
SOLENOID OR STORED
ENERGY OPERATORS**

HOW TO USE YOUR RENEWAL PARTS ORDERING GUIDE

1. Locate the part or parts to be replaced in one of the drawings in this manual.
2. Identify each part by item number, description and part number. Give drawing figure number in which part is shown.
3. Include breaker type, rating and breaker serial number with your order.
4. Place order with your Allis-Chalmers representative.

ORDERING EXAMPLE

Type	<u>350A</u>	Rated Amps	<u>3000</u>	Serial Number	<u>H64295-3</u>
Type of Operator:	<input checked="" type="checkbox"/>	Solenoid	<input type="checkbox"/>	Stored Energy	
Renewal Parts Ordering Guide	<u>18X4438</u>				
<u>Fig</u>	<u>Item</u>	<u>Description</u>	<u>Part Number</u>	<u>Quantity</u>	
1	27	Link	71-113-440-004	1	
1	26	Pin	71-111-640-001	2	
4	2	Piston	71-114-161-504	1	

If required part is not identified in this manual -----

1. Make a copy of the drawing figure in which the part would appear.
2. Indicate with arrows or other markings location of part.
3. Describe or sketch required part.
4. Include breaker type, rating and breaker serial number with your order.
5. Place order with your Allis-Chalmers representative.

TABLE OF CONTENTS

	<u>Drawing No.</u>	<u>Figure</u>	<u>Page</u>
Solenoid Operated Breaker Assembly	72-422-909-601	1	1
Solenoid Operated Basic Breaker	18-466-954-501	1	1
Stud and Support Assembly	71-302-190-506	2	2
Stud and Contact Assembly	71-401-169-516	3	3
Main Contact Block Assembly	71-302-186-506	4	4
Arc Chute Assembly	71-401-551-501	5	5
Solenoid Operator and Frame Assembly	72-420-021-501	6	6
Solenoid Operator Assembly	72-320-036-501	7	8
Stored Energy Breaker Assembly	72-422-914-601	8	9
Stored Energy Basic Breaker	18-466-954-501	8	9
Stored Energy Operator and Frame Assembly	72-420-084-501	9	10
Stored Energy Operator Assembly	72-420-081-503	10	12

ITEM	DESCRIPTION	PART NUMBER	ITEM	DESCRIPTION	PART NUMBER
1	Contact Finger Ass	18-657-511-578	17	Plate	71-208-645-003
2	Panel Assembly	71-206-907-506	18	Plate	71-208-645-004
3	Support Assembly	71-208-166-504	19	Cover	72-220-078-001
4	Support Assembly	71-208-166-505	20	Angle	71-118-070-001
5	Support Assembly	71-208-166-506	21	Stud and Support	See Figure 2
6	Barrier Assembly	71-208-182-501	22	Frame and Operator	See Figure 6
7	Arc Chute Assembly	See Figure 5	23	Shim	71-110-641-001
8	Plate Assembly - L.H.	72-120-423-501	24	Shim	71-110-641-002
9	Plate Assembly - R.H.	72-120-423-502	25	Washer	71-018-451-001
10	Indicator	71-111-259-001	26	Pin	71-111-640-001
11	Strip	71-114-221-001	27	Link	71-113-440-004
12	Plate	71-118-068-002	28	Spring	71-113-600-001
13	Bar	71-118-069-001	29	Shim	71-113-679-001
14	Pin	71-164-062-010	30	Angle	71-115-222-001
15	Indicator	71-167-932-001	31	Pin	71-164-062-013
16	Connector	71-208-180-002			

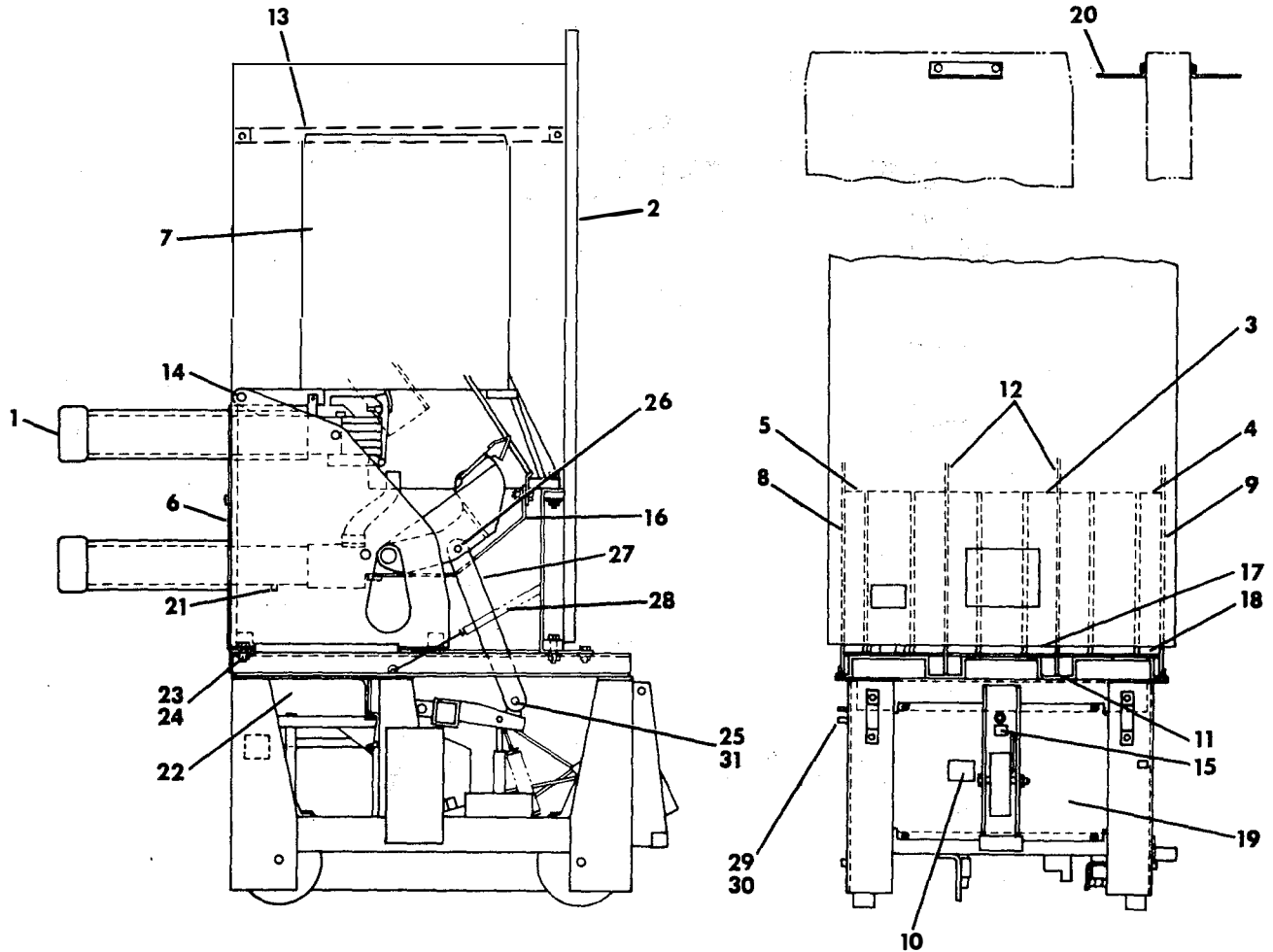


Figure 1. Solenoid Operated Breaker Assembly (72-422-909-601)
and Solenoid Operated Basic Breaker (18-466-954-501)

ITEM	DESCRIPTION	PART NUMBER
1	Stud and Contact Assembly	See Figure 3
2	Main Contact & Block	See Figure 4
3	Arc Runner	71-112-851-001
4	Arc Runner	71-112-852-001
5	Insulation	71-112-853-001
6	Nozzle	71-302-801-001
7	Side Plate	71-302-192-001
8	Plate	71-206-886-001
9	Support	71-110-276-001
10	Stud	71-110-277-001
11	Rod	71-110-282-001
12	Spacer	71-114-478-001
13	Rod	71-166-194-020
14	Washer	71-916-992-002

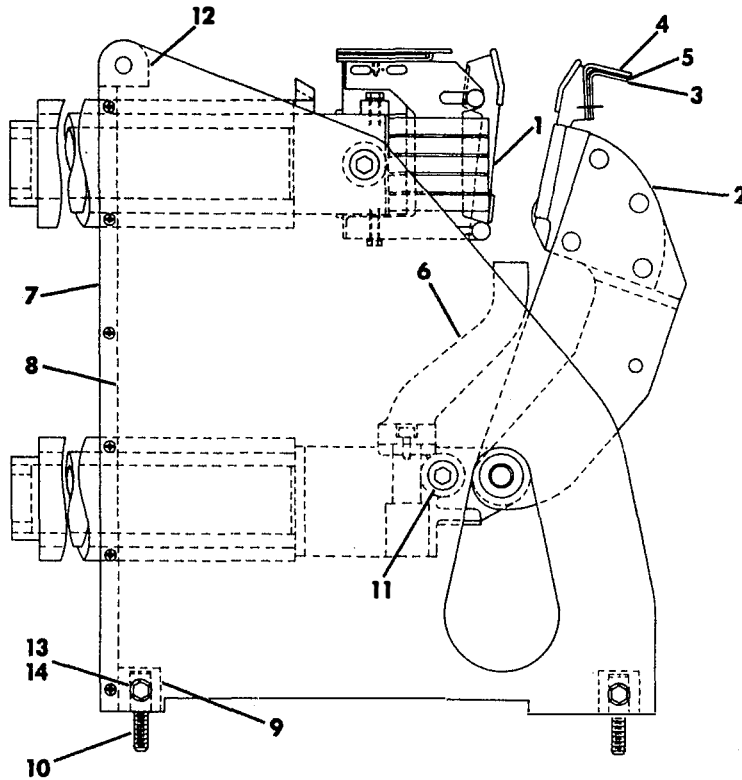


Figure 2. Stud and Support Assembly (71-302-190-506)

ITEM	DESCRIPTION	PART NUMBER	ITEM	DESCRIPTION	PART NUMBER
1	Stud & Block (Upper)	71-302-339-501	12	Spring	71-204-606-019
2	Contact Finger Ass'y.	71-111-458-501	13	Spring	71-204-604-028
3	Arcing Contact	71-113-148-501	14	Block & Tube Ass'y.	71-111-473-501
4	Bolt	71-111-464-501	15	Tube	71-111-486-001
5	Runner Ass'y.	71-111-466-501	16	Spacer	71-111-490-001
6	Angle	71-112-847-001	17	Bumper	71-111-492-003
7	Block	71-207-269-002	18	Bumper	71-111-492-002
8	Tube	71-207-878-001	19	Pin	71-111-494-001
9	Plate	71-207-486-001	20	Bumper	71-112-832-002
10	Spring	71-204-605-012	21	Comp. Spring	71-204-605-021
11	Spring	71-204-604-027			

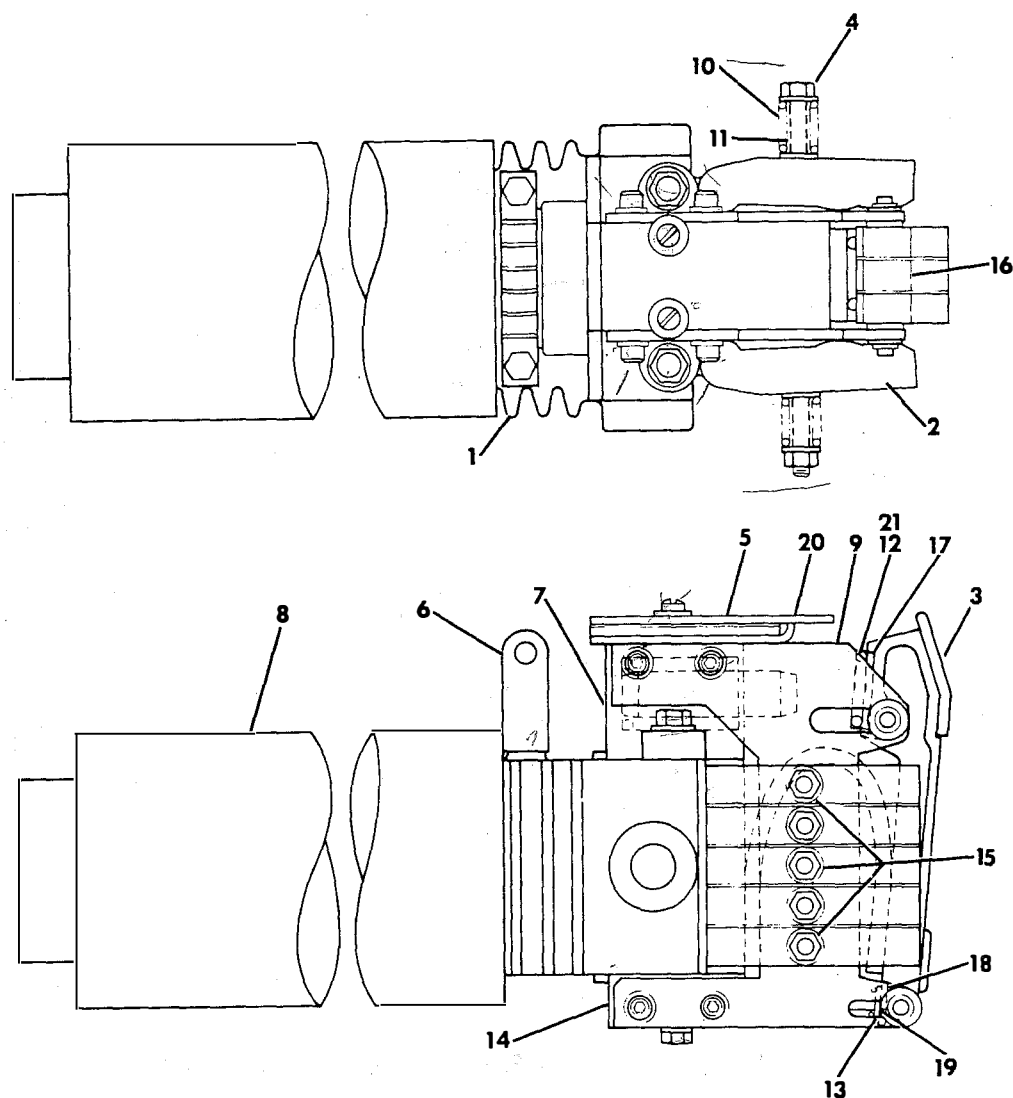


Figure 3. Stud and Contact Assembly (71-401-169-516)

ITEM	DESCRIPTION	PART NUMBER
1	Stud and Block - Lower	71-302-338-501
2	Disconnect Arm - L. H.	71-207-881-501
3	Disconnect Arm - R. H.	71-207-881-502
4	Contact	71-207-476-504
5	Guide	71-111-444-001
6	Screw	71-111-445-001
7	Washer	71-111-446-001
8	Nut	71-161-974-001
9	Tube	71-207-878-001
10	Spring	71-204-605-013
11	Disconnect Arm - L. H.	71-302-189-001
12	Disconnect Arm - R. H.	71-302-189-002

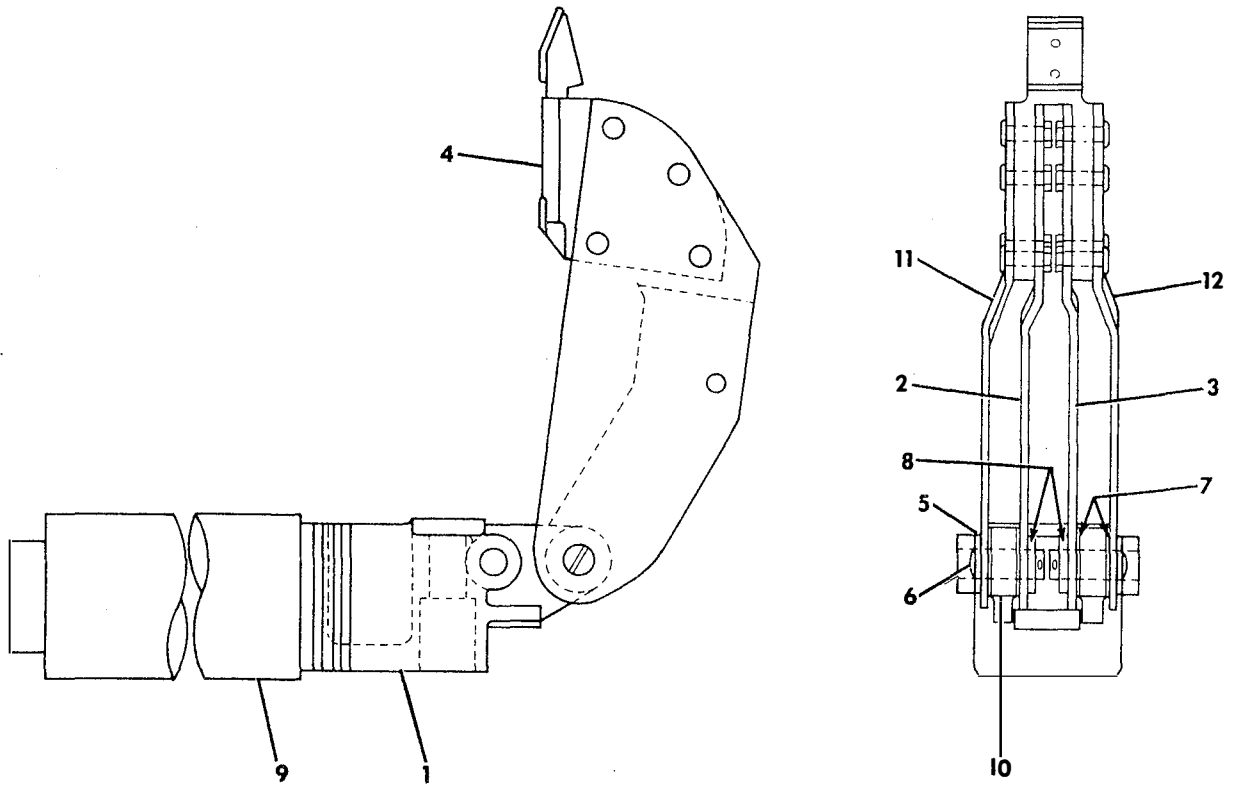


Figure 4. Main Contact Block Assembly (71-302-186-506)

ITEM	DESCRIPTION	PART NUMBER	ITEM	DESCRIPTION	PART NUMBER
1	Side Plate	71-303-166-501	16	Plate	71-116-576-001
2	Side Plate	71-303-166-502	17	Barrier	71-209-332-501
3	Plate	71-112-878-001	18	Barrier Stack	71-116-575-001
4	Baffle	71-208-164-503	19	Core	71-200-806-505
5	Baffle	71-208-164-504	20	Coil (Rear)	71-116-574-501
6	Support	71-208-162-503	21	Plate	71-208-174-001
7	Support	71-208-162-504	22	Block	71-112-880-001
8	Pole Piece	71-116-147-503	23	Transfer Stack	71-208-169-501
9	Plate	71-116-571-001	24	Plate	71-112-872-501
10	Plate	71-116-573-001	25	Coil (Front)	71-116-578-501
11	Block	71-116-577-001	26	Magnetic Circuit	71-112-825-501
12	Band	71-915-843-007	27	Insulation	71-112-828-001
13	Block	71-116-187-002	28	Screw	71-114-586-002
14	Arc Runner	71-209-612-001	29	Strip	71-209-613-002
15	Strip	71-209-613-001	30	Plate	71-116-576-002

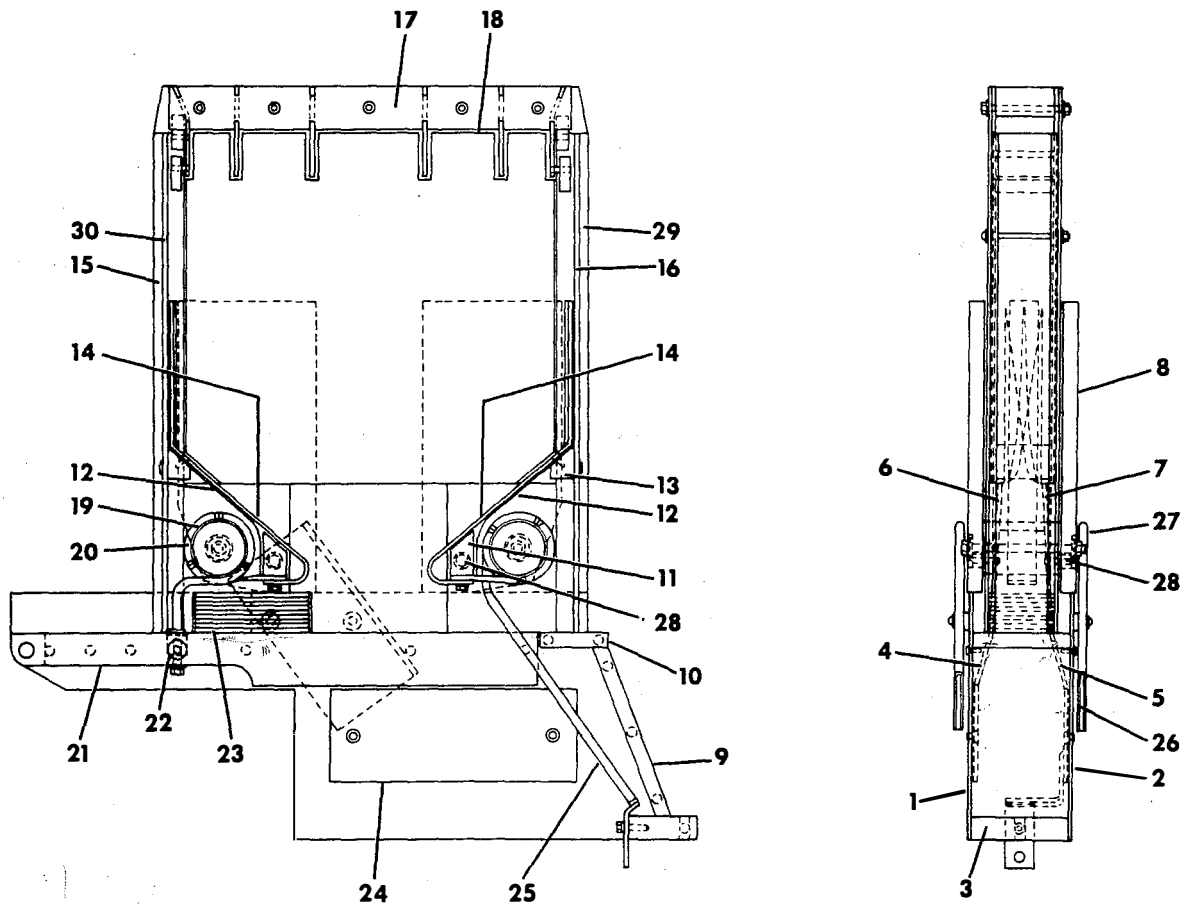


Figure 5. Arc Chute Assembly (71-401-551-501)

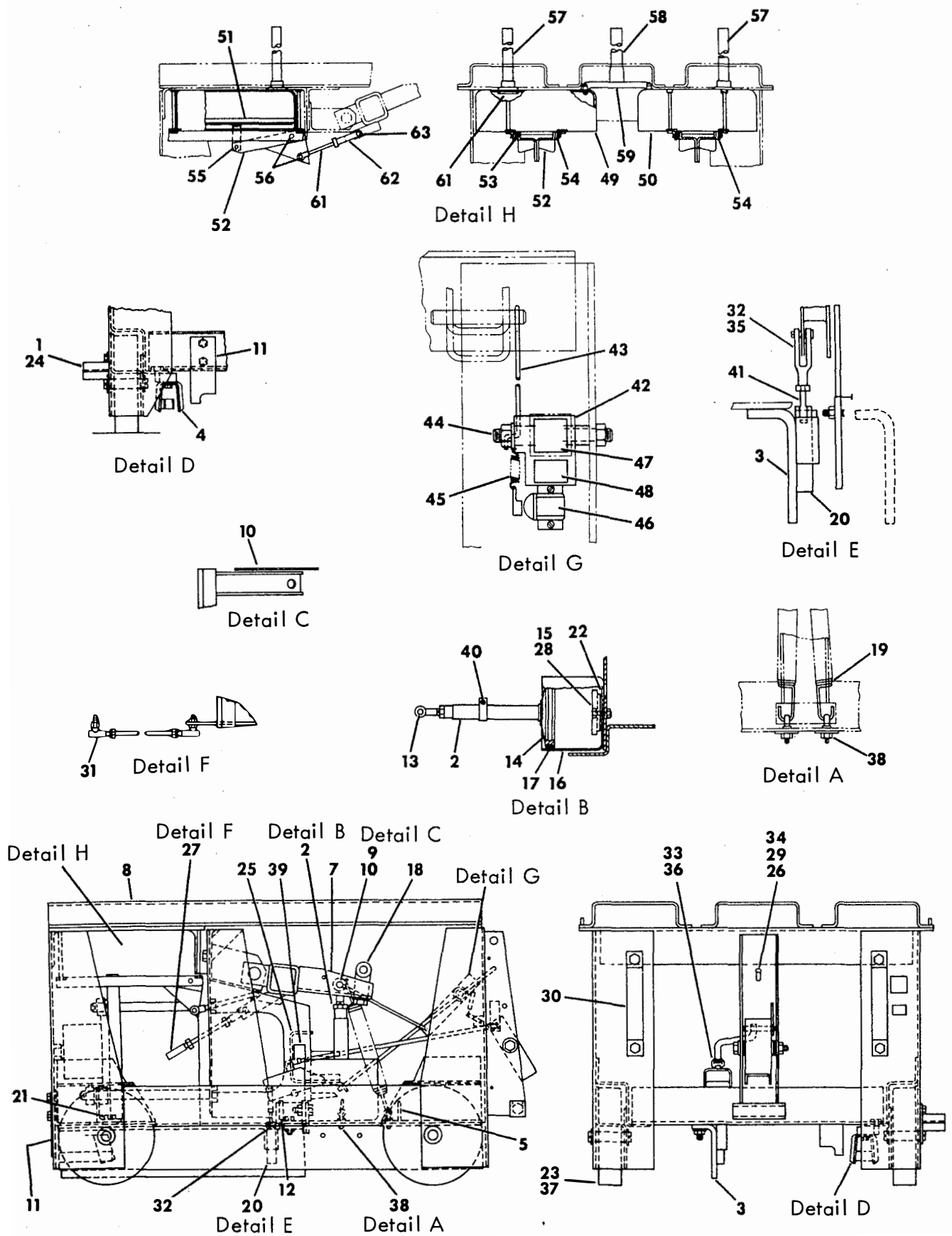


Figure 6. Solenoid Operator and Frame Assembly
(72-420-021-501) Sheet 1 of 2

ITEM	DESCRIPTION	PART NUMBER	ITEM	DESCRIPTION	PART NUMBER
1	Guide	71-113-437-501	33	Yoke End Adj	00-691-701-903
2	Piston	71-114-161-504	34	Ratchet Plate	00-633-182-060
3	Guide	71-114-177-501	35	Clevis Pin	00-957-211-901
4	Ground Contact	71-114-787-502	36	Clevis Pin	00-957-211-903
5	Support	71-115-238-501	37	Wheel	18-657-411-257
6	Foot Lever	72-220-080-501	38	Eye End	00-691-713-103
7	Operator	72-320-036-501	39	Terminal Block	00-857-036-013
8	Frame	72-420-027-501	40	Clamp	00-855-796-021
9	Pin	71-104-754-035	41	Eye End	00-691-713-102
10	Pin	71-104-754-036	42	Indicator Arm	71-114-214-001
11	Stop	71-113-478-001	43	Link	71-114-215-002
12	Spring	71-113-502-001	44	Shoulder Stud	71-108-105-003
13	Rod End	71-113-541-002	45	Spring	71-140-615-001
14	Spring	71-113-621-001	46	Operation Counter	71-110-940-002
15	Bumper	71-114-154-001	47	Indicator	71-101-248-001
16	Cylinder	71-114-155-002	48	Indicator	71-101-247-001
17	Packing	71-114-156-001	49	Puffer	71-208-648-001
18	Connector	71-114-182-002	50	Puffer	71-208-648-002
19	Spring	71-114-733-001	51	Pan	71-114-193-501
20	Plunger	71-113-442-001	52	Crank	71-208-642-501
21	Angle	71-115-224-001	53	Angle	71-114-192-001
22	Valve Disc	71-115-244-001	54	Angle	71-114-192-002
23	Pin	71-115-254-003	55	Pin	71-104-402-016
24	Shim	71-115-544-001	56	Pin	71-115-251-016
25	Guide	71-117-815-001	57	Tube	71-111-413-502
26	Spring	71-140-125-001	58	Tube	71-111-413-503
27	Rod	71-140-147-031	59	Connector	71-208-650-002
28	Insulation	71-176-201-203	60	Yoke	71-112-934-002
29	Pin	71-915-161-030	61	Grommet	15-837-659-002
30	Handle	15-171-175-001	62	Yoke End	00-691-701-902
31	Ball Joint	00-833-573-003	63	Clevis Pin	00-957-211-902
32	Yoke End	00-691-701-901			

Figure 6. Solenoid Operator and Frame Assembly
(72-420-021-501) Sheet 2 of 2

ITEM	DESCRIPTION	PART NUMBER	ITEM	DESCRIPTION	PART NUMBER
1	Arm	71-302-796-503	23	Spring	71-112-627-001
2	Latch	71-100-264-501	24	Latch	71-113-355-001
3	Link Assembly	18-657-372-512	25	Link	71-113-413-001
4	Arm	71-101-269-504	26	Spring	71-113-503-001
5	Tube	71-114-775-503	27	Washer	71-114-271-001
6	Plunger Assembly	71-208-445-503	28	Armature	71-115-218-001
7	Plate	71-209-652-501	29	Tube	71-115-973-003
8	Frame	71-302-967-502	30	Spring	71-140-076-001
9	Lever	72-120-394-502	31	Washer	71-140-422-035
10	Washer	71-024-132-039	32	Washer	71-152-809-027
11	Cap	71-100-213-001	33	Washer	71-158-647-013
12	Setscrew	71-100-356-001	34	Pin	71-161-921-008
13	Pin	71-100-377-001	35	Washer	71-170-538-001
14	Pin	71-100-382-001	36	Washer	71-173-732-004
15	Pin	71-100-391-001	37	Washer	71-922-850-001
16	Pin	71-100-929-005	38	Spring	71-204-606-020
17	Washer	71-102-710-001	39	Cam	72-120-007-001
18	Rod	71-107-949-005	40	Pin	72-120-194-001
19	Shim	71-109-649-001	41	Rod	72-120-329-001
20	Shim	71-109-649-002	42	Roller Follower	15-813-073-001
21	Stop	71-109-654-001	43	Needle Bearing	00-813-119-814
22	Washer	71-111-395-001	44	Nyliner	00-815-279-020

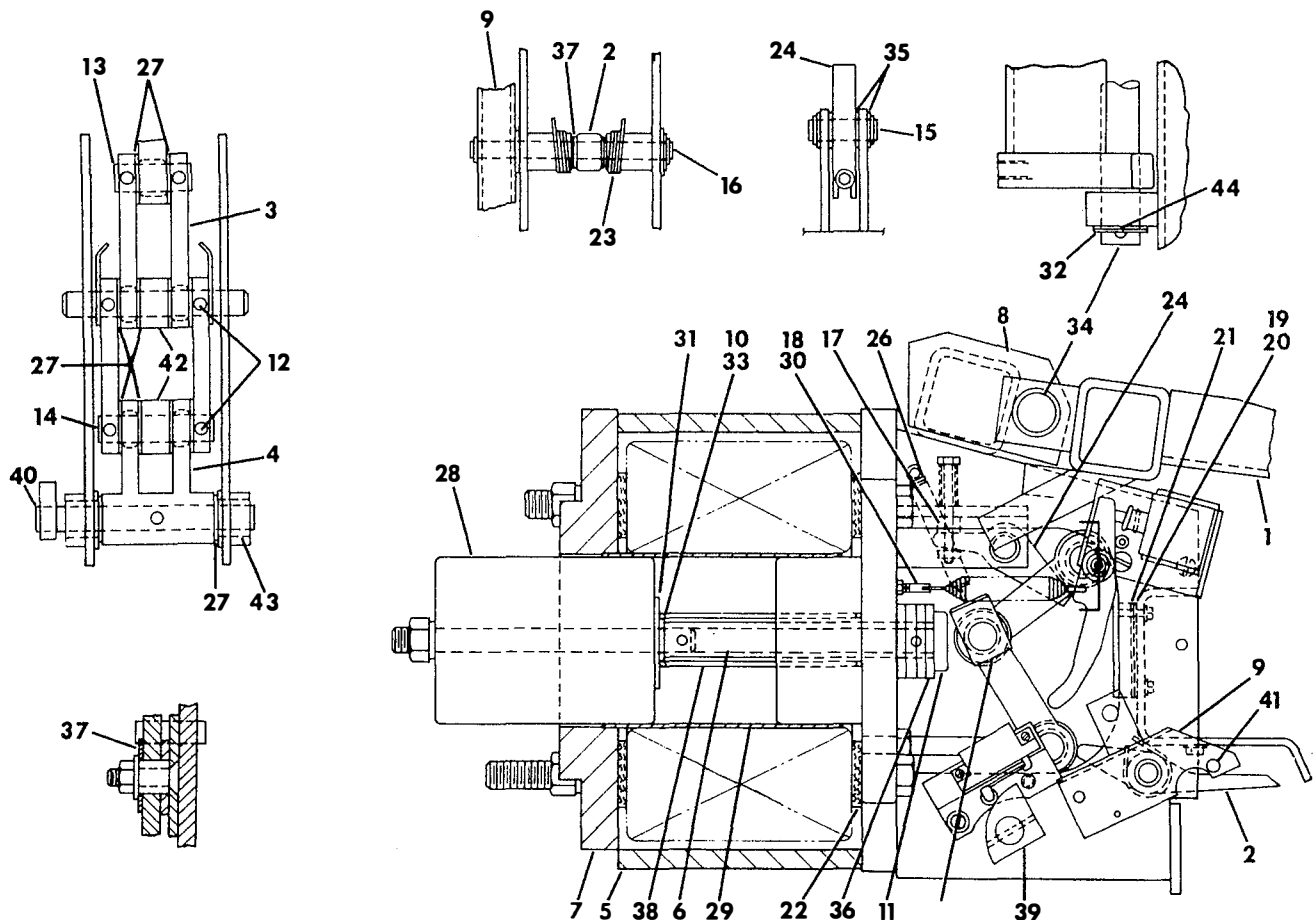


Figure 7. Solenoid Operator Assembly (72-320-036-501)

ITEM	DESCRIPTION	PART NUMBER	ITEM	DESCRIPTION	PART NUMBER
1	Contact Finger	71-240-442-501	17	Plate	71-208-645-003
2	Panel Assembly	71-206-907-506	18	Plate	71-208-645-004
3	Support Assembly	71-208-166-504	19	Cover	72-220-078-001
4	Support Assembly	71-208-166-505	20	Cover	72-220-078-002
5	Support Assembly	71-208-166-506	21	Angle	71-118-070-001
6	Barrier Assembly	71-208-182-501	22	Shim	71-110-641-001
7	Arc Chute Assembly	71-401-551-501	23	Shim	71-110-641-002
8	Plate Assembly	72-120-423-501	24	Washer	71-018-451-001
9	Plate Assembly	72-120-423-502	25	Pin	71-111-640-001
10	Indicator	71-111-259-001	26	Link	71-113-440-002
11	Strip	71-114-221-001	27	Spring	71-113-600-001
12	Plate	71-118-068-002	28	Shim	71-113-679-001
13	Bar	71-118-069-001	29	Angle	71-115-222-001
14	Pin	71-164-062-010	30	Pin	71-164-062-013
15	Indicator	71-167-932-001	31	Stud and Support	See Figure 2
16	Connector	71-208-180-002	32	Frame and Operator	See Figure 10

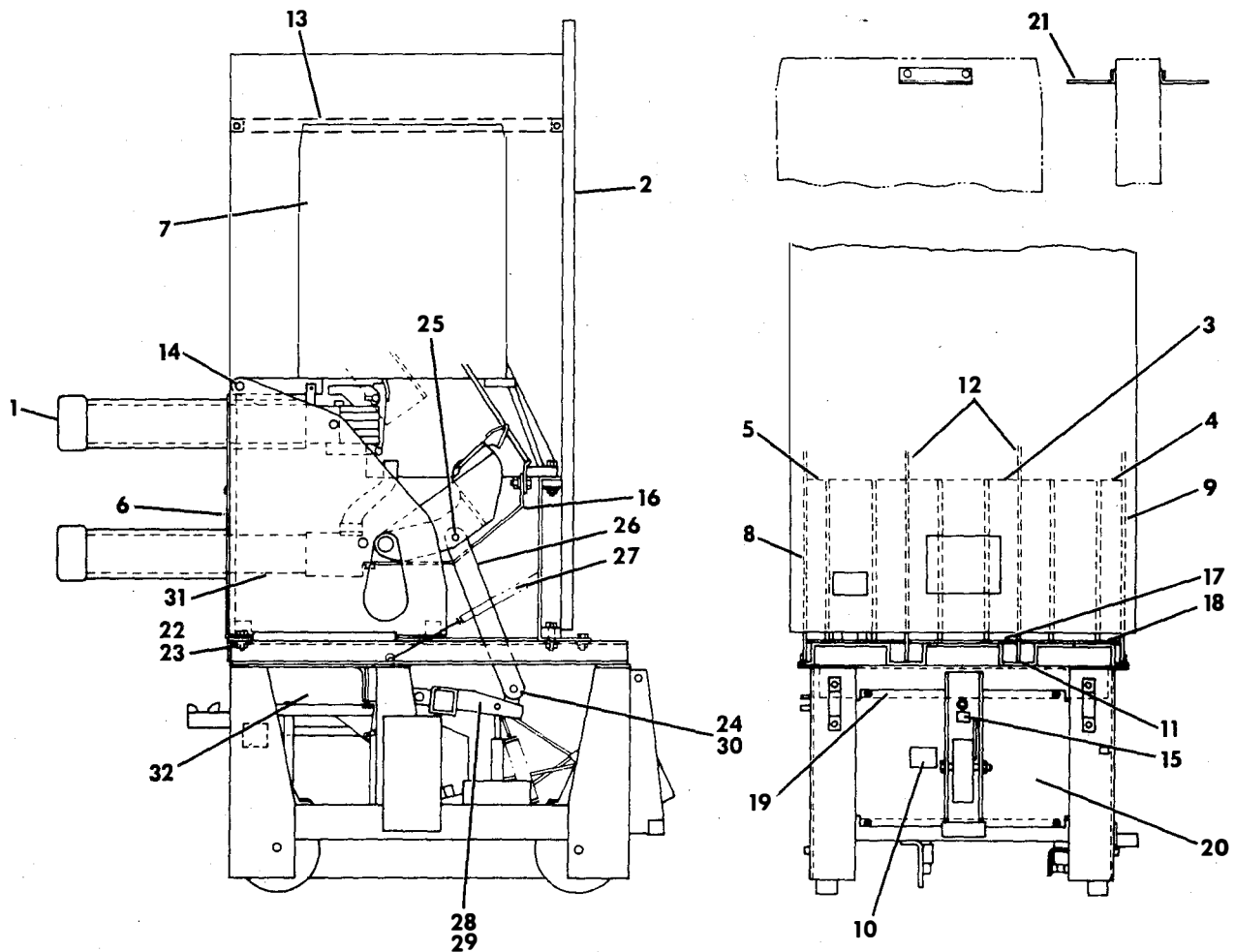


Figure 8. Stored Energy Breaker Assembly (72-422-914-601) and Stored Energy Basic Breaker (18-466-954-501)

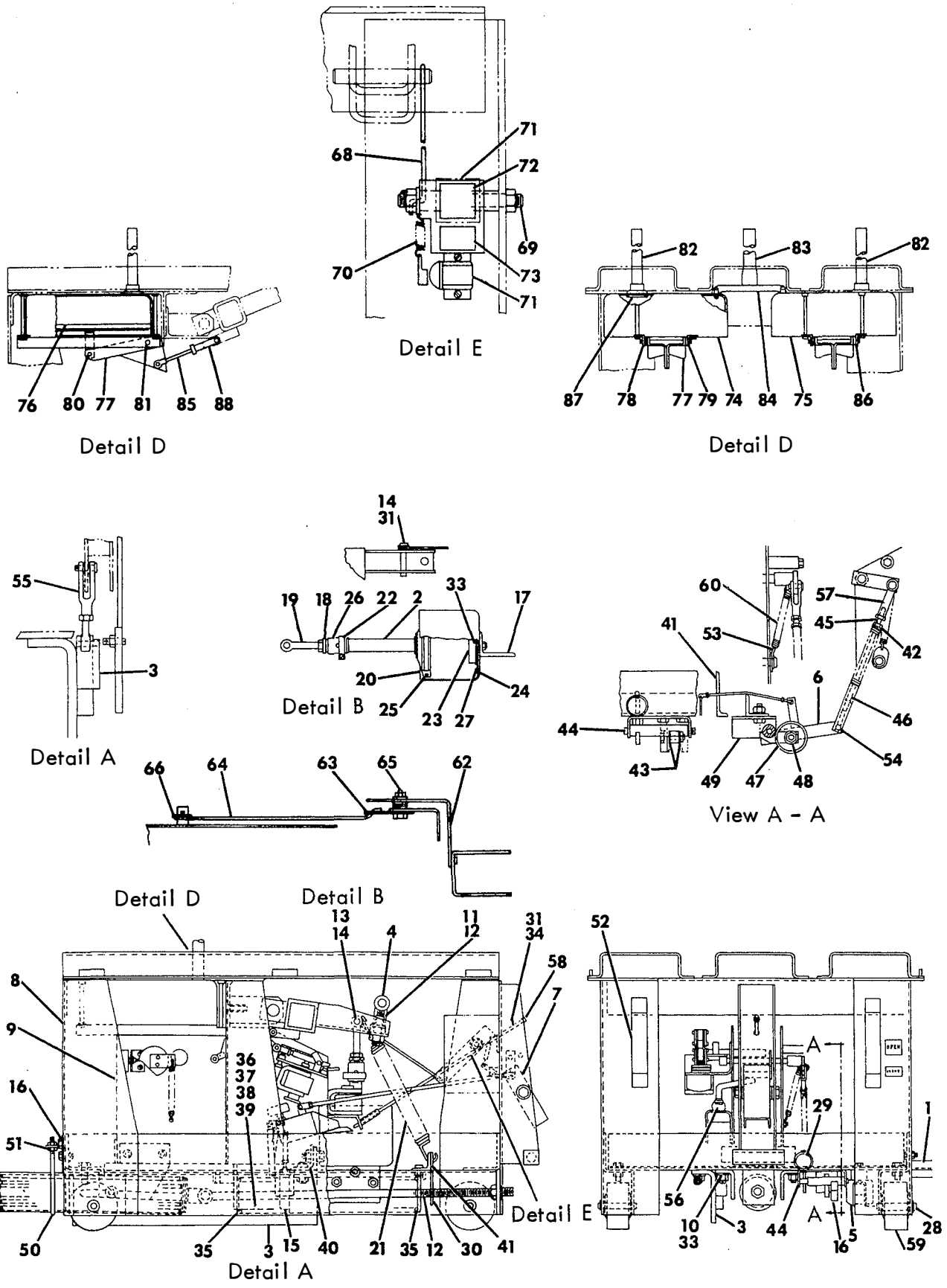


Figure 9. Stored Energy Operator and Frame (72-420-084-501) Sheet 1 of 2

ITEM	DESCRIPTION	PART NUMBER	ITEM	DESCRIPTION	PART NUMBER
1	Guide Assembly	71-113-437-501	45	Rod	72-120-703-001
2	Piston Assembly	71-114-161-501	46	Clevis	72-120-704-001
3	Guide Assembly	71-114-177-501	47	Roller	72-120-706-001
4	Connector Assembly	71-114-181-501	48	Hex Aircraft Bolt	00-611-343-030
5	Ground Contact Ass'y.	71-114-787-502	49	Bracket	72-120-708-001
6	Crank Assembly	72-120-699-501	50	U-Bolt	72-120-380-001
7	Foot Lever Assembly	72-220-080-501	51	Angle	72-120-381-001
8	Frame Assembly	72-420-027-501	52	Handle	72-120-391-001
9	Operator Assembly	72-420-081-503	53	Link	72-120-709-001
10	Washer	71-024-132-044	54	Pin	72-120-723-003
11	Tubing	71-102-863-005	55	Yoke End	00-691-701-901
12	Tubing	71-103-411-008	56	Yoke End	00-691-701-903
13	Pin	71-104-754-035	57	Yoke End	00-691-701-902
14	Pin	71-104-754-036	58	Cap Rating Plate	00-633-182-060
15	Plunger	71-113-442-001	59	Wheel	18-657-411-257
16	Stop	71-113-478-001	60	External Spring	15-837-455-002
17	Angle	71-113-530-001	61	Spring	15-837-321-003
18	Plug	71-113-538-001	62	Plate	71-113-349-001
19	Rod End	71-113-541-001	63	Indicator Assembly	71-208-691-501
20	Spring	71-113-621-001	64	Rod	71-113-457-001
21	Spring	71-113-669-001	65	Stud	71-113-674-001
22	Clamp	71-113-995-001	66	Washer	71-018-726-001
23	Bumper	71-114-154-001	67	Indicator Arm	71-114-214-001
24	Cylinder	71-114-155-002	68	Link	71-114-215-001
25	Packing	71-114-156-001	69	Shoulder Stud	71-108-105-003
26	Coupling	71-114-157-001	70	Spring	71-140-615-001
27	Valve Disc	71-115-244-001	71	Operation Counter	71-110-940-002
28	Pin	71-115-254-003	72	Indicator	71-101-248-001
29	Ring	71-116-131-001	73	Indicator	71-101-247-001
30	Plate	71-116-514-001	74	Puffer	72-208-648-001
31	Spring	71-140-125-001	75	Puffer	71-208-648-002
32	Washer	71-158-647-016	76	Pan Assembly	71-114-193-501
33	Insulation	71-176-201-003	77	Crank Assembly	71-208-642-501
34	Pin	71-915-161-035	78	Angle	71-114-192-001
35	Washer	71-921-604-005	79	Angle	71-114-192-002
36	Spring	71-204-606-022	80	Pin	71-104-402-016
37	Spring	71-204-606-023	81	Pin	71-115-251-016
38	Spring	71-204-607-009	82	Tube Assembly	71-111-413-502
39	Spring	71-204-608-004	83	Tube Assembly	71-111-413-503
40	Angle	71-208-698-001	84	Connector	71-208-650-002
41	Angle	71-208-699-002	85	Yoke	71-112-934-002
42	Washer	71-101-488-001	86	Angle	71-114-192-003
43	Washer	71-152-809-002	87	Grommet	15-837-659-002
44	Pin	72-120-199-006	88	Yoke End	00-691-701-902

Figure 9. Stored Energy Operator and Frame (72-420-084-501) Sheet 2 of 2

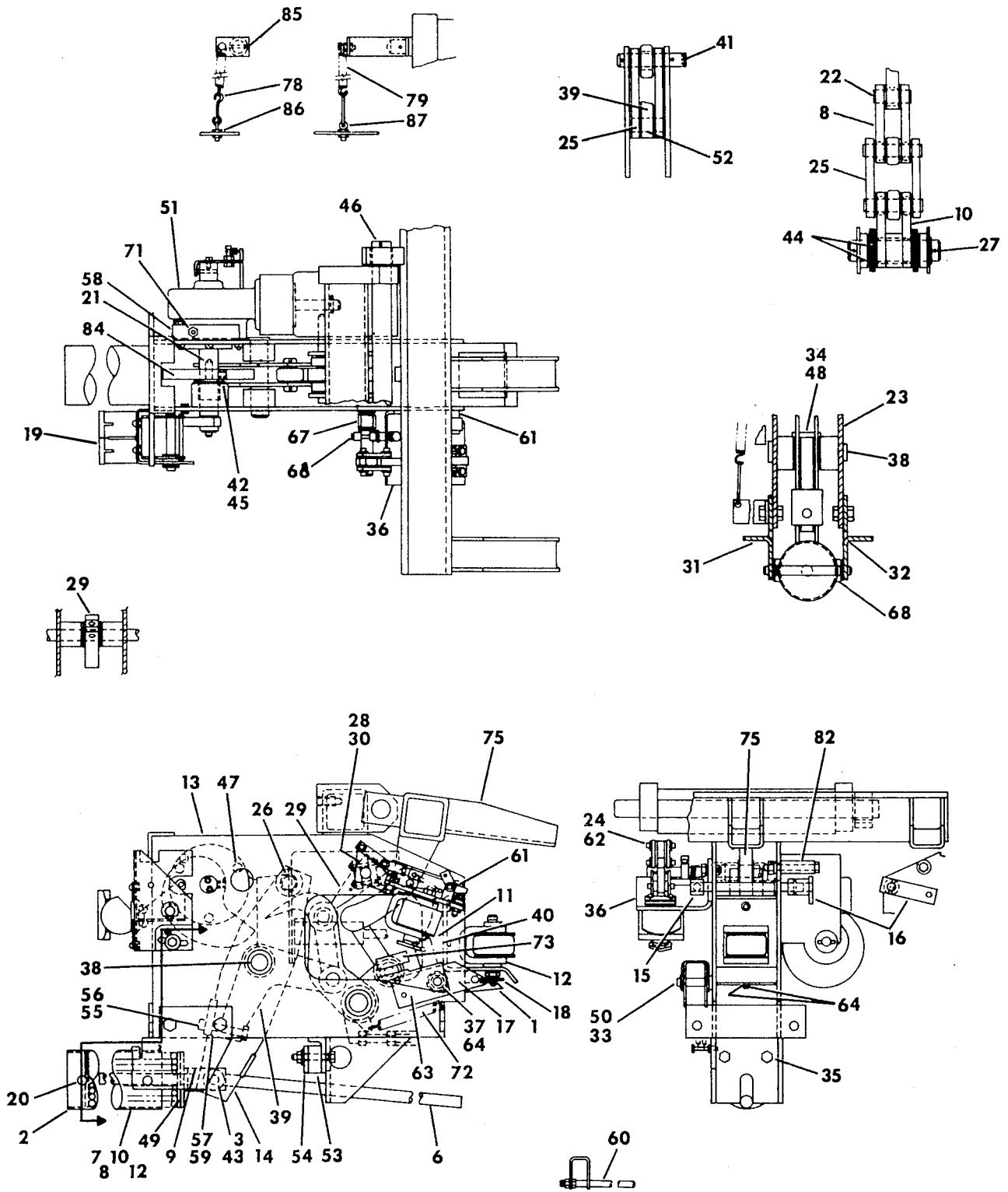


Figure 10. Stored Energy Operator Assembly (72-420-081-503) Sheet 1 of 2

ITEM	DESCRIPTION	PART NUMBER	ITEM	DESCRIPTION	PART NUMBER
1	Latch Assembly	72-120-047-501	45	Washer	71-152-809-027
2	Tube Assembly	71-114-922-502	46	Pin	71-161-921-004
3	Pin	71-104-935-020	47	Washer	71-170-127-001
4	Link Assembly	18-657-372-506	48	Tubing	71-172-303-008
5	Link Assembly	18-657-372-507	49	Washer	71-921-604-005
6	Rod End	71-114-024-001	50	Washer	71-922-850-001
7	Spring	71-204-605-022	51	Gear Assembly	71-210-046-016
8	Spring	71-204-606-023	52	Pin	72-120-041-001
9	Rod End Assembly	71-114-035-501	53	Bumper	72-120-113-002
10	Spring	71-204-607-009	54	Link	72-120-114-001
11	Stop Assembly	71-116-177-502	55	Screw	72-120-137-001
12	Spring	71-204-608-004	56	Spacer	72-120-138-001
13	Frame Assembly	71-401-398-503	57	Spacer	72-120-139-001
14	Arm Assembly	72-120-132-501	58	Bar	72-120-140-001
15	Arm Assembly	72-120-445-501	59	Spacer	72-120-179-001
16	Crank Assembly	72-120-697-502	60	Rod	72-120-329-001
17	Lever Assembly	72-120-568-502	61	Shaft	72-120-442-001
18	Bumper Plate Assy	72-120-152-501	62	Washer	71-152-809-033
19	Switch Assembly	18-657-372-511	63	Arm	72-120-399-001
20	Pin	71-018-299-001	64	Washer	71-171-059-001
21	Key	71-018-485-005	65	Spacer	72-110-390-009
22	Pin	71-100-377-001	66	Crank	72-120-710-001
23	Washer	71-101-009-001	67	Torsion Spring	71-114-133-001
24	Pin	72-120-723-001	68	Washer	71-024-132-044
25	Link	71-113-416-001	69	Spring	00-837-455-012
26	Pin	71-114-019-002	70	Link	72-120-709-001
27	Pin	71-114-044-002	71	Set Screw	00-617-025-476
28	Pin	72-120-434-091	72	Spring	00-837-455-012
29	Latch Assembly	72-120-486-501	73	Switch	15-171-044-004
30	Crank	72-120-724-001	74	Fastener	15-673-115-001
31	Bracket	71-114-924-001	75	Arm Assembly	71-302-796-503
32	Bracket	71-114-924-002	76	Spacer	72-120-061-001
33	Pin	71-114-949-001	77	Cam	71-118-392-001
34	Tubing	71-115-330-005	78	Link	72-120-087-001
35	Spacer	71-116-015-003	79	Spring	71-113-503-001
36	Lock Assembly	72-220-134-502	80	Screw	72-120-141-001
37	Spring	71-116-218-001	81	Shim	71-105-138-001
38	Pin	71-116-484-001	82	Spacer	71-114-951-002
39	Arm	71-116-793-001	83	Round	71-104-107-016
40	Shim	71-116-807-001	84	Cam	72-220-044-001
41	Pin	71-118-093-001	85	Arm Assembly	72-120-375-501
42	Washer	71-104-422-002	86	Spacer	71-173-709-016
43	Washer	71-140-422-038	87	Eye End	00-691-713-102
44	Washer	71-152-809-025			

Figure 10. Stored Energy Operator Assembly (72-420-081-503) Sheet 2 of 2

